

火山観測 Summary of Observations on Volcanoes

常時観測 平成23年(2011年)3月

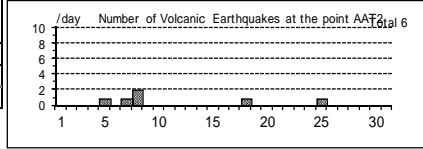
Continuous Observation in March,2011

(1)アトサヌプリ

震動観測(Seismic Observation)	月計 total	最大(起日) max (date)
Observation Point: AAT2		
火山性地震回数(Number of volcanic earthquakes)	6	2 (8)
火山性微動回数(Number of volcanic tremors)	-	-
微動継続時間(Duration of volcanic tremors) (min.)	-	-

Note: AAT2 (N43 37.11' E144 27.01' H156m)

Atosanupuri: March,2011



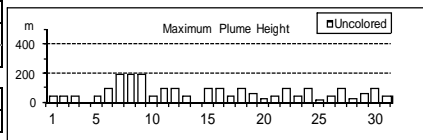
遠望観測(Visual Observation)	最大(起日) max (date)
噴煙量(Quantity of plumes) (JMA's scale)	1 (abbr.)
噴煙の高さ(Height of plumes) (m)	200 (7.8.9)
噴煙の色(Color of plumes)	W
他の火山現象(Other volcanic phenomena)	-

Note: Plumes were from Upper part of F1 Fumaroles(Location U),

Middle part of F1 Fumaroles(M) Lower part of F1 Fumaroles(L) and/or F2 Fumaroles(F)

Note: Uncolored:Plume color was White(W),

Colored:Plume color was Light white(LW), Grayish white(GW), Gray(G) and other.

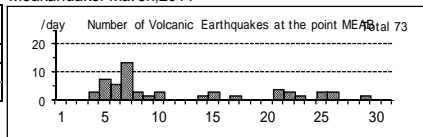


(2)雌阿寒岳

震動観測(Seismic Observation)	月計 total	最大(起日) max (date)
Observation Point: MEAB		
火山性地震回数(Number of volcanic earthquakes)	73	14 (7)
火山性微動回数(Number of volcanic tremors)	-	-
微動継続時間(Duration of volcanic tremors) (min.)	-	-

Note: MEAB (N43 22.78' E143 58.65' H680m)

Meakandake: March,2011

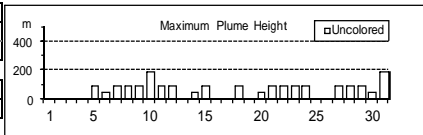


遠望観測(Visual Observation)	最大(起日) max (date)
噴煙量(Quantity of plumes) (JMA's scale)	1 (abbr.)
噴煙の高さ(Height of plumes) (m)	200 (10.31)
噴煙の色(Color of plumes)	W
他の火山現象(Other volcanic phenomena)	-

Note: Plumes were from the Pommachineshiri Summit Crater(Location T), the Nakamachineshiri Crater(U), the Akanuma Crater(M) and/or Pommachineshiri NW Fumaroles(N).

Note: Uncolored:Plume color was White(W),

Colored:Plume color was Light white(LW), Grayish white(GW), Gray(G) and other.

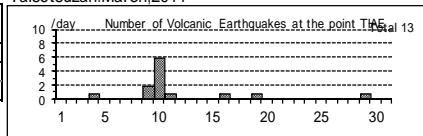


(3)大雪山

震動観測(Seismic Observation)	月計 total	最大(起日) max (date)
Observation Point: TIAE		
火山性地震回数(Number of volcanic earthquakes)	13	6 (10)
火山性微動回数(Number of volcanic tremors)	-	-
微動継続時間(Duration of volcanic tremors) (min.)	-	-

Note: TIAE (N43 39.66' E142 49.62' H1607m)

Taisetsuzan:March,2011

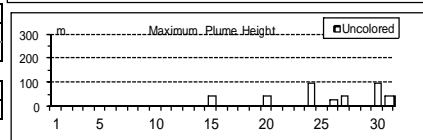


遠望観測(Visual Observation)	最大(起日) max (date)
噴煙量(Quantity of plumes) (JMA's scale)	1 (abbr.)
噴煙の高さ(Height of plumes) (m)	100 (24.30)
噴煙の色(Color of plumes)	W
他の火山現象(Other volcanic phenomena)	-

Note: Plumes were from I Fumaroles(Location I)

Note: Uncolored:Plume color was White(W),

Colored:Plume color was Light white(LW), Grayish white(GW), Gray(G) and other.

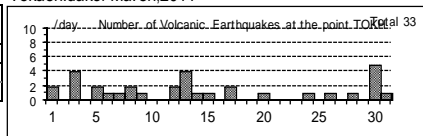


(4)十勝岳

震動観測(Seismic Observation)	月計 total	最大(起日) max (date)
Observation Point: TOKH		
火山性地震回数(Number of volcanic earthquakes)	33	5 (30)
火山性微動回数(Number of volcanic tremors)	-	-
微動継続時間(Duration of volcanic tremors) (min.)	-	-

Note: TOKH (N43 25.96' E142 40.15' H1,355m)

Tokachidake: March,2011



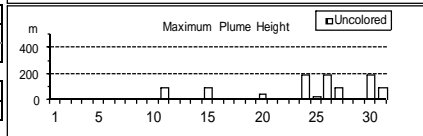
遠望観測(Visual Observation)	最大(起日) max (date)
噴煙量(Quantity of plumes) (JMA's scale)	1 (abbr.)
噴煙の高さ(Height of plumes) (m)	200 (24.26.30)
噴煙の色(Color of plumes)	W
他の火山現象(Other volcanic phenomena)	-

Note: Plumes were from the Taisho Crater(Location X),

the 62 crater Area(P,Q,Y),the Furukozawa Fumaroles (F) and/or the Kyufun Crater (Z).

Note: Uncolored:Plume color was White(W),

Colored:Plume color was Light white(LW), Grayish white(GW), Gray(G) and other.



(5)樽前山

震動観測(Seismic Observation)

Observation Point: TARC	月計	最大(起日)
	total	max (date)
火山性地震回数(Number of volcanic earthquakes)	61	7 (6)
火山性微動回数(Number of volcanic tremors)	-	-
微動継続時間(Duration of volcanic tremors) (min.)	-	-

Note: TARC (N42 42.23' E141 22.64' H639m)

遠望観測(Visual Observation)

Observation Point: TARC	最大(起日)
	max (date)
噴煙量(Quantity of plumes) (JMA's scale)	1 (abbr.)
噴煙の高さ(Height of plumes) (m)	100 (abbr.)

噴煙の色(Color of plumes)	W
他の火山現象(Other volcanic phenomena)	-

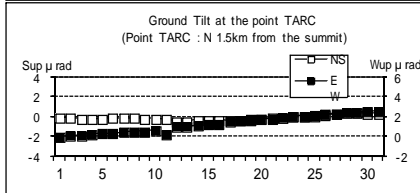
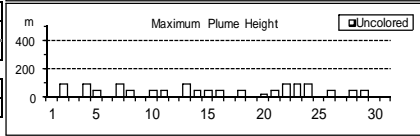
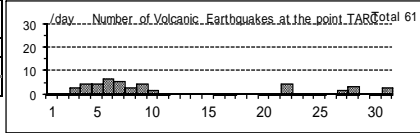
Note: Plumes were from the Summit Area(Location A, B and/or E).

Note: Uncolored:Plume color was White(W).

Colored:Plume color was Light white(LW),

Grayish white(GW), Gray(G) and other.

Tarumaesan: March,2011



(6)倶多楽

震動観測(Seismic Observation)

Observation Point: KUJG	月計	最大(起日)
	total	max (date)
火山性地震回数(Number of volcanic earthquakes)	-	-
火山性微動回数(Number of volcanic tremors)	-	-
微動継続時間(Duration of volcanic tremors) (min.)	-	-

Note:KUJG (N42 29.50' E141 07.68' H327m)

遠望観測(Visual Observation)

Observation Point: KUJG	最大(起日)
	max (date)
噴煙量(Quantity of plumes) (JMA's scale)	1 (abbr.)
噴煙の高さ(Height of plumes) (m)	40 (4)

噴煙の色(Color of plumes)	W
他の火山現象(Other volcanic phenomena)	-

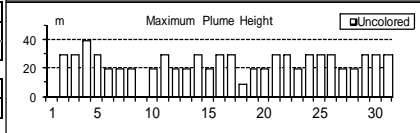
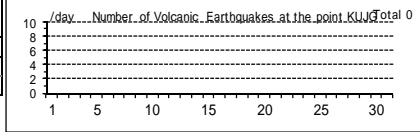
Note: Plumes were from Hiroyiyama Fumarole(Location H)

Note: Uncolored:Plume color was White(W).

Colored:Plume color was Light white(LW),

Grayish white(GW), Gray(G) and other.

Kuttara: March,2011



(7)有珠山

震動観測(Seismic Observation)

Observation Point: USUA	月計	最大(起日)
	total	max (date)
火山性地震回数(Number of volcanic earthquakes)	22	3 (3,15)
火山性微動回数(Number of volcanic tremors)	-	-
微動継続時間(Duration of volcanic tremors) (min.)	-	-

Note: USUA (N42 31.70' E140 50.17' H246m)

遠望観測(Visual Observation)

Observation Point: USUA	最大(起日)
	max (date)
噴煙量(Quantity of plumes) (JMA's scale)	1 (abbr.)
噴煙の高さ(Height of plumes) (m)	100 (28)

噴煙の色(Color of plumes)	W
他の火山現象(Other volcanic phenomena)	-

Note: Plumes were from the Summit Area of Usuzan(Location P) ,

Mt.showa-shinazan(Z), Nishi-yama vent group(N)

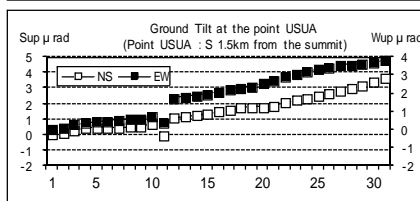
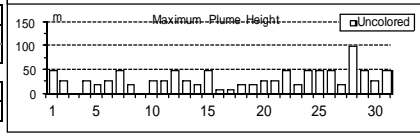
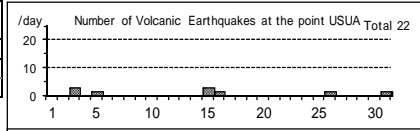
and Konpira-yama vent group(K).

Note: Uncolored:Plume color was White(W).

Colored:Plume color was Light white(LW),

Grayish white(GW), Gray(G) and other.

Usuzan: March,2011



(8)北海道駒ヶ岳

震動観測(Seismic Observation)

	最大(起日) max (date)	
	月計 total	最大(起日) max (date)
Observation Point: KOMA	1	1 (21)
火山性地震回数(Number of volcanic earthquakes)	1	1 (21)
火山性微動回数(Number of volcanic tremors)	-	-
微動継続時間(Duration of volcanic tremors) (min.)	-	-

Note: KOMA (N42 03.19' E140 38.29' H265m)

遠望観測(Visual Observation)

最大(起日) max (date)	
噴煙量(Quantity of plumes) (JMA's scale)	1 (abbr.)
噴煙の高さ(Height of plumes) (m)	70 (abbr.)

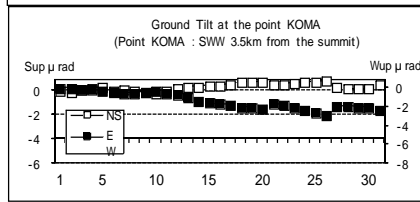
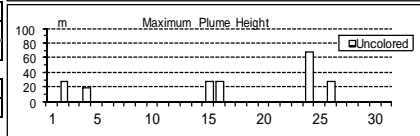
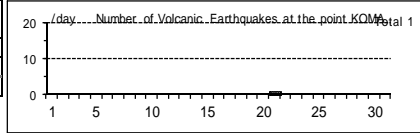
噴煙の色(Color of plumes)	W
他の火山現象(Other volcanic phenomena)	-

Note: Plumes were from the Showa-4 Crater(Location D1) and/or the 96 South Crater(D2).

Note: Uncolored:Plume color was White(W).

Colored:Plume color was Light white(LW), Grayish white(GW), Gray(G) and other.

Hokkaido-Komagatake: March,2011



(9)恵山

震動観測(Seismic Observation)

	最大(起日) max (date)	
	月計 total	最大(起日) max (date)
Observation Point: ESDK	18	3 (5,24)
火山性地震回数(Number of volcanic earthquakes)	18	3 (5,24)
火山性微動回数(Number of volcanic tremors)	-	-
微動継続時間(Duration of volcanic tremors) (min.)	-	-

Note: ESDK (N41 48.69' E141 09.73' H369m)

遠望観測(Visual Observation)

最大(起日) max (date)	
噴煙量(Quantity of plumes) (JMA's scale)	1 (abbr.)
噴煙の高さ(Height of plumes) (m)	100 (abbr.)

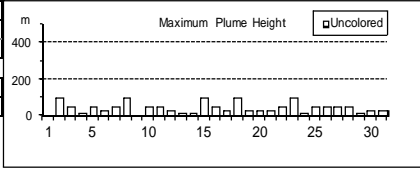
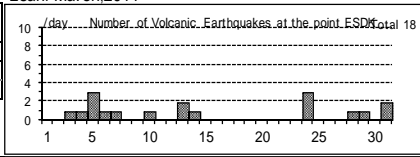
噴煙の色(Color of plumes)	W
他の火山現象(Other volcanic phenomena)	-

Note: Plumes were from X Crater(Location X), Y Crater(Y)

Note: Uncolored:Plume color was White(W).

Colored:Plume color was Light white(LW), Grayish white(GW), Gray(G) and other.

Esan: March,2011



(10)岩木山

遠望観測(Visual Observation)

最大(起日) max (date)	
噴煙量(Quantity of plumes) (JMA's scale)	-
噴煙の高さ(Height of plumes) (m)	-

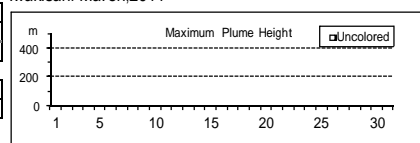
噴煙の色(Color of plumes)	-
他の火山現象(Other volcanic phenomena)	-

Note: Plumes were from Iwaki Summit

Note: Uncolored:Plume color was White(W).

Colored:Plume color was Light white(LW), Grayish white(GW), Gray(G) and other.

Iwakisan: March,2011



(11)秋田焼山

震動観測(Seismic Observation)

	最大(起日) max (date)	
	月計 total	最大(起日) max (date)
Observation Point: AYBN	37	8 (18)
火山性地震回数(Number of volcanic earthquakes)	37	8 (18)
火山性微動回数(Number of volcanic tremors)	-	-
微動継続時間(Duration of volcanic tremors) (min.)	-	-

Note: AYBN (N39 56.72' E140 43.17' H739m)

遠望観測(Visual Observation)

最大(起日) max (date)	
噴煙量(Quantity of plumes) (JMA's scale)	1 (abbr.)
噴煙の高さ(Height of plumes) (m)	30 (22,28,31)

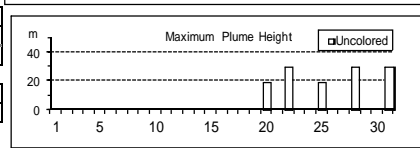
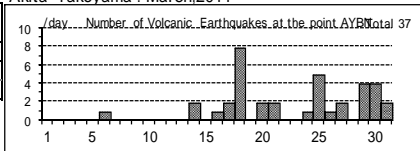
噴煙の色(Color of plumes)	W
他の火山現象(Other volcanic phenomena)	-

Note: Plumes were from Yakeyama Summit

Note: Uncolored:Plume color was White(W).

Colored:Plume color was Light white(LW), Grayish white(GW), Gray(G) and other.

Akita-Yakeyama : March,2011



(12)岩手山

震動観測(Seismic Observation)

Observation Point: MYK	月計 total	最大(起日) max (date)
火山性地震回数(Number of volcanic earthquakes)	43	6 (30)
火山性微動回数(Number of volcanic tremors)	-	-
微動継続時間(Duration of volcanic tremors) (min.)	-	-

Note: MYK (N39 52.65° E140 57.55° H763m)

遠望観測(Visual Observation)

	最大(起日) max (date)
噴煙量(Quantity of plumes) (JMA's scale)	1 (28)
噴煙の高さ(Height of plumes) (m)	10 (28)

噴煙の色(Color of plumes)	W
他の火山現象(Other volcanic phenomena)	-

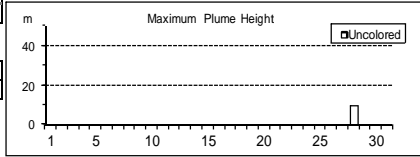
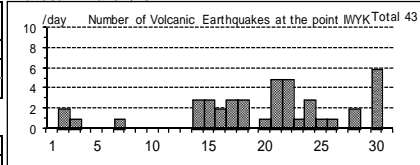
Note: Plumes were from the Kurokurayama Summit(Location X), the Ojigokudani(Y-6)

Note: Uncolored:Plume color was White(W).*

Colored:Plume color was Light white(LW), Grayish white(GW), Gray(G) and other.

*Uncolored plumes mean only White(W) color since 1st April, 2010.

Iwatesan: March,2011



(13)秋田駒ヶ岳

遠望観測(Visual Observation)

	最大(起日) max (date)
噴煙量(Quantity of plumes) (JMA's scale)	-
噴煙の高さ(Height of plumes) (m)	-

噴煙の色(Color of plumes)	-
他の火山現象(Other volcanic phenomena)	-

Note: Plumes were from Medake Summit(Location Z-1a),

Geothermal area on the N part of Medake Summit(Z-1b),

W part of Medake Summit(Z-1c),

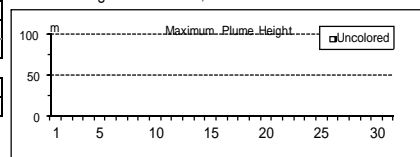
Geothermal area on the NE slope of Medake Summit(Z-1d) and/or

Crater on the E part of Medake Summit(Z-1e)

Note: Uncolored:Plume color was White(W).

Colored:Plume color was Light white(LW), Grayish white(GW), Gray(G) and other.

Akita-Komagatake: March,2011



(14)鳥海山

震動観測(Seismic Observation)

Observation Point: CHKN	月計 total	最大(起日) max (date)
火山性地震回数(Number of volcanic earthquakes)	-	-
火山性微動回数(Number of volcanic tremors)	-	-
微動継続時間(Duration of volcanic tremors) (min.)	-	-

Note: CHKN (N39 07.75° E139 56.36° H335m)

遠望観測(Visual Observation)

	最大(起日) max (date)
噴煙量(Quantity of plumes) (JMA's scale)	-
噴煙の高さ(Height of plumes) (m)	-

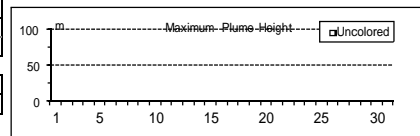
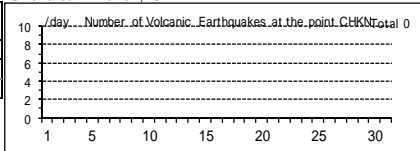
噴煙の色(Color of plumes)	-
他の火山現象(Other volcanic phenomena)	-

Note: Plumes were from Sin Summit(Location Y)

Note: Uncolored:Plume color was White(W).

Colored:Plume color was Light white(LW), Grayish white(GW), Gray(G) and other.

Chokaisan: March,2011



(15)栗駒山

震動観測(Seismic Observation)

Observation Point: KRK2	月計 total	最大(起日) max (date)
火山性地震回数(Number of volcanic earthquakes)	-	-
火山性微動回数(Number of volcanic tremors)	-	-
微動継続時間(Duration of volcanic tremors) (min.)	-	-

Note: KRK2 (N38 56.45° E140 49.08° H840m)

遠望観測(Visual Observation)

	最大(起日) max (date)
噴煙量(Quantity of plumes) (JMA's scale)	-
噴煙の高さ(Height of plumes) (m)	-

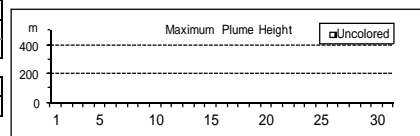
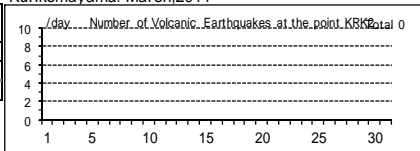
噴煙の色(Color of plumes)	-
他の火山現象(Other volcanic phenomena)	-

Note: Plumes were from Showa Lake(Location Z-1),Old Crater (W-1)

Note: Uncolored:Plume color was White(W).

Colored:Plume color was Light white(LW), Grayish white(GW), Gray(G) and other.

Kurikomayama: March,2011



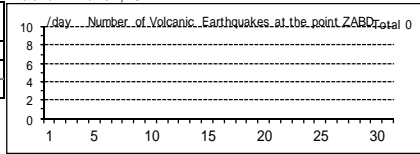
(16) 蔵王山

震動観測(Seismic Observation)

Observation Point: ZABD	月計	最大(起日)
	total	max (date)
火山性地震回数(Number of volcanic earthquakes)	-	-
火山性微動回数(Number of volcanic tremors)	-	-
微動継続時間(Duration of volcanic tremors) (min.)	-	-

Note: ZABD (N38 07.33' E140 23.69' H1,012m)

Zaozan: March,2011



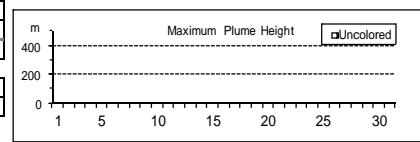
遠望観測(Visual Observation)

Observation Point: ZABD	最大(起日)
	max (date)
噴煙量(Quantity of plumes) (JMA's scale)	-
噴煙の高さ(Height of plumes) (m)	-
噴煙の色(Color of plumes)	-
他の火山現象(Other volcanic phenomena)	-

Note: Plumes were from Okama(Location S-1b),Maruyamasawa(Y-2a)

Note: Uncolored:Plume color was White(W).

Colored:Plume color was Light white(LW), Grayish white(GW), Gray(G) and other.



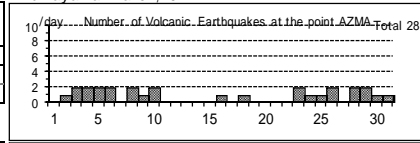
(17) 吾妻山

震動観測(Seismic Observation)

Observation Point: AZMA	月計	最大(起日)
	total	max (date)
火山性地震回数(Number of volcanic earthquakes)	28	2 (abbr.)
火山性微動回数(Number of volcanic tremors)	-	-
微動継続時間(Duration of volcanic tremors) (min.)	-	-

Note: AZMA (N37 43.34' E140 16.53' H1,295m)

Azumayama: March,2011



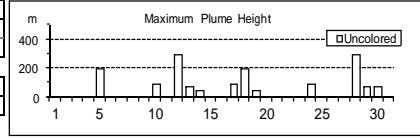
遠望観測(Visual Observation)

Observation Point: AZMA	最大(起日)
	max (date)
噴煙量(Quantity of plumes) (JMA's scale)	1 (abbr.)
噴煙の高さ(Height of plumes) (m)	300 (12,28)
噴煙の色(Color of plumes)	W
他の火山現象(Other volcanic phenomena)	-

Note: Plumes were from the Oana Crater

Note: Uncolored:Plume color was White(W).

Colored:Plume color was Light white(LW), Grayish white(GW), Gray(G) and other.



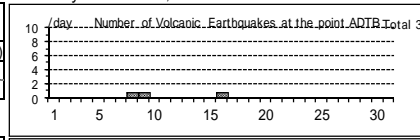
(18) 安達太良山

震動観測(Seismic Observation)

Observation Point: ADTB	月計	最大(起日)
	total	max (date)
火山性地震回数(Number of volcanic earthquakes)	3	1 (8,9,16)
火山性微動回数(Number of volcanic tremors)	-	-
微動継続時間(Duration of volcanic tremors) (min.)	-	-

Note: ADTB(N37 38.05' E140 18.21' H1,320m)

Adatarayama: March,2011



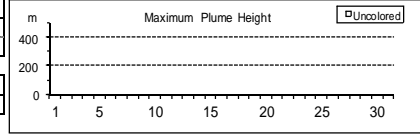
遠望観測(Visual Observation)

Observation Point: ADTB	最大(起日)
	max (date)
噴煙量(Quantity of plumes) (JMA's scale)	-
噴煙の高さ(Height of plumes) (m)	-
噴煙の色(Color of plumes)	-
他の火山現象(Other volcanic phenomena)	-

Note: Plumes were from the Numanodaira - SW area.

Note: Uncolored:Plume color was White(W).

Colored:Plume color was Light white(LW), Grayish white(GW), Gray(G) and other.



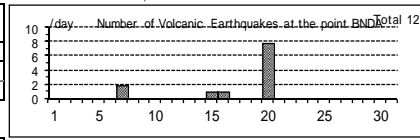
(19) 磐梯山

震動観測(Seismic Observation)

Observation Point: BNDA	月計	最大(起日)
	total	max (date)
火山性地震回数(Number of volcanic earthquakes)	12	8 (20)
火山性微動回数(Number of volcanic tremors)	-	-
微動継続時間(Duration of volcanic tremors) (min.)	-	-

Note: BNDA(N37 35.04' E140 04.79' H1000m)

Bandaisan: March,2011



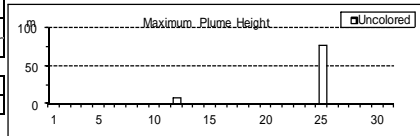
遠望観測(Visual Observation)

Observation Point: BNDA	最大(起日)
	max (date)
噴煙量(Quantity of plumes) (JMA's scale)	1 (12,25)
噴煙の高さ(Height of plumes) (m)	80 (25)
噴煙の色(Color of plumes)	W
他の火山現象(Other volcanic phenomena)	-

Note: Plumes were from the Fumarolic area in Crater wall.

Note: Uncolored:Plume color was White(W).

Colored:Plume color was Light white(LW), Grayish white(GW), Gray(G) and other.



(20)那須岳

震動観測(Seismic Observation)

	月計 total	最大(起日) max (date)
Observation Point: NSUA		
火山性地震回数(Number of volcanic earthquakes)	6	2 (10,25)
火山性微動回数(Number of volcanic tremors)	-	-
微動継続時間(Duration of volcanic tremors) (min.)	-	-

Note: NSUA (N37 06.38' E139 59.44' H1,083m)

遠望観測(Visual Observation)

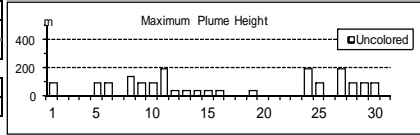
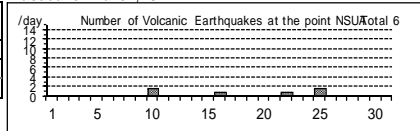
	最大(起日) max (date)
噴煙量(Quantity of plumes) (JMA's scale)	1 (abbr.)
噴煙の高さ(Height of plumes) (m)	200 (11,24,27)
噴煙の色(Color of plumes)	W
他の火山現象(Other volcanic phenomena)	-

Note: Plumes were from the west flank of Mt. Nasudake.

Note: Uncolored:Plume color was White(W).

Colored:Plume color was Light white(LW), Grayish white(GW), Gray(G) and other.

Nasudake: March,2011



(21)日光白根山

震動観測(Seismic Observation)

	月計 total	最大(起日) max (date)
Observation Point: NSYG		
火山性地震回数(Number of volcanic earthquakes)	332	74 (12)
火山性微動回数(Number of volcanic tremors)	-	-
微動継続時間(Duration of volcanic tremors) (min.)	-	-

Note: NSYG (N36 48.22' E139 24.46' H1,642m)

遠望観測(Visual Observation)

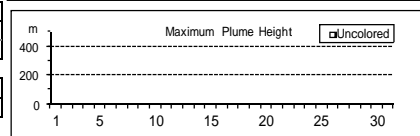
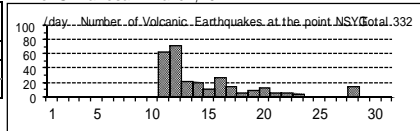
	最大(起日) max (date)
噴煙量(Quantity of plumes) (JMA's scale)	-
噴煙の高さ(Height of plumes) (m)	-
噴煙の色(Color of plumes)	-
他の火山現象(Other volcanic phenomena)	-

Note: Plumes were from Summit Area of Nikko-Shiranesan(Location A)

Note: Uncolored:Plume color was White(W).

Colored:Plume color was Light white(LW), Grayish white(GW), Gray(G) and other.

Nikko-Shiranesan: March,2011



(22)草津白根山

震動観測(Seismic Observation)

	月計 total	最大(起日) max (date)
Observation Point: KSHA		
火山性地震回数(Number of volcanic earthquakes)	78	17 (14)
火山性微動回数(Number of volcanic tremors)	-	-
微動継続時間(Duration of volcanic tremors) (min.)	-	-

Note: KSHA (N36 38.88' E138 32.73' H1,933m)

遠望観測(Visual Observation)

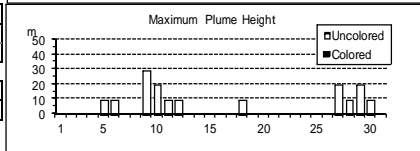
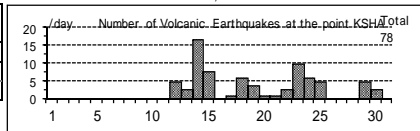
	最大(起日) max (date)
噴煙量(Quantity of plumes) (JMA's scale)	1 (abbr.)
噴煙の高さ(Height of plumes) (m)	30 (9)
噴煙の色(Color of plumes)	W
他の火山現象(Other volcanic phenomena)	-

Note: Plumes were from the Yugama Crater and Fumaroles at northern side of Yugama Crater

Note: Uncolored:Plume color was White(W).

Colored:Plume color was Light white(LW), Grayish white(GW), Gray(G) and other.

Kusatsu-Shiranesan: March,2011



(23)浅間山

震動観測(Seismic Observation)

	月計 total	最大(起日) max (date)
Observation Point: ASMB		
火山性地震回数(Number of volcanic earthquakes)	351	26 (7)
火山性微動回数(Number of volcanic tremors)	-	-
微動継続時間(Duration of volcanic tremors) (min.)	-	-

Note: ASMB (N36 23.37' E138 31.13' H1,864m)

遠望観測(Visual Observation)

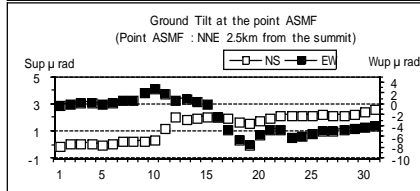
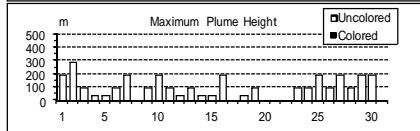
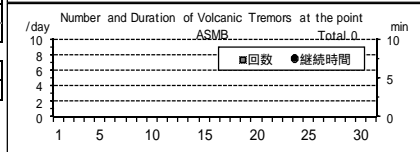
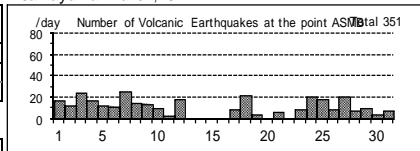
	最大(起日) max (date)
噴煙量(Quantity of plumes) (JMA's scale)	2 (abbr.)
噴煙の高さ(Height of plumes) (m)	300 (2)
噴煙の色(Color of plumes)	W
他の火山現象(Other volcanic phenomena)	-

Note: Plumes were from the Kamayama Crater(Location A).

Note: Uncolored:Plume color was White(W).

Colored:Plume color was Light white(LW), Grayish white(GW), Gray(G) and other.

Asamayama: March,2011



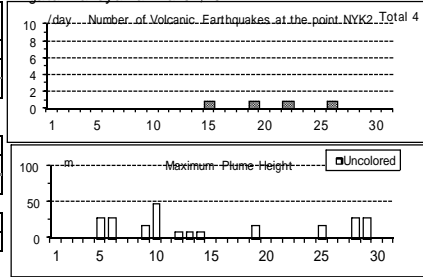
(24)新潟焼山

震動観測(Seismic Observation)		
Observation Point: NYK2	月計 total	最大(起日) max (date)
火山性地震回数(Number of volcanic earthquakes)	4	1 (abbr.)
火山性微動回数(Number of volcanic tremors)	-	-
微動継続時間(Duration of volcanic tremors) (min.)	-	-
Note: NYK2 (N36 57.35' E138 02.29' H1,147m)		

遠望観測(Visual Observation)		
最大(起日) max (date)		
噴煙量(Quantity of plumes) (JMA's scale)	1 (abbr.)	
噴煙の高さ(Height of plumes) (m)	50 (10)	
噴煙の色(Color of plumes)	W	
他の火山現象(Other volcanic phenomena)	-	

Note: Plumes were from Upper East flank(Location A).
 Note: Uncolored:Plume color was White(W).
 Colored:Plume color was Light white(LW), Grayish white(GW), Gray(G) and other.

Niigata-Yakeyama: March.2011



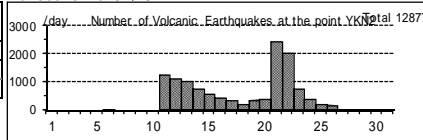
(25)焼岳

震動観測(Seismic Observation)		
Observation Point: YKN2	月計 total	最大(起日) max (date)
火山性地震回数(Number of volcanic earthquakes)	12877	2434 (21)
火山性微動回数(Number of volcanic tremors)	-	-
微動継続時間(Duration of volcanic tremors) (min.)	-	-
Note: YKN2 (N36 15.67' E137 34.45' H1,151m)		

遠望観測(Visual Observation)		
最大(起日) max (date)		
噴煙量(Quantity of plumes) (JMA's scale)	-	
噴煙の高さ(Height of plumes) (m)	-	
噴煙の色(Color of plumes)	-	
他の火山現象(Other volcanic phenomena)	-	

Note: Plumes were from Summit Crater(Location A).
 Note: Uncolored:Plume color was White(W).
 Colored:Plume color was Light white(LW), Grayish white(GW), Gray(G) and other.

Yakedake March.2011



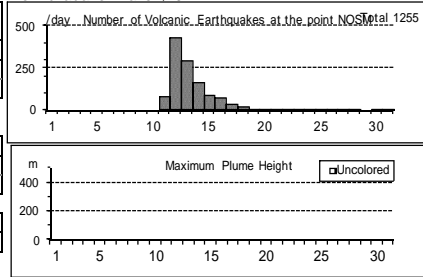
(26)乗鞍岳

震動観測(Seismic Observation)		
Observation Point: NOSM	月計 total	最大(起日) max (date)
火山性地震回数(Number of volcanic earthquakes)	1255	431 (12)
火山性微動回数(Number of volcanic tremors)	-	-
微動継続時間(Duration of volcanic tremors) (min.)	-	-
Note: NOSM (N36 06.85' E137 35.81' H1,804m)		

遠望観測(Visual Observation)		
最大(起日) max (date)		
噴煙量(Quantity of plumes) (JMA's scale)	-	
噴煙の高さ(Height of plumes) (m)	-	
噴煙の色(Color of plumes)	-	
他の火山現象(Other volcanic phenomena)	-	

Note: Plumes were from Summit Crater(Location A).
 Note: Uncolored:Plume color was White(W).
 Colored:Plume color was Light white(LW), Grayish white(GW), Gray(G) and other.

Norikuradake: March.2011



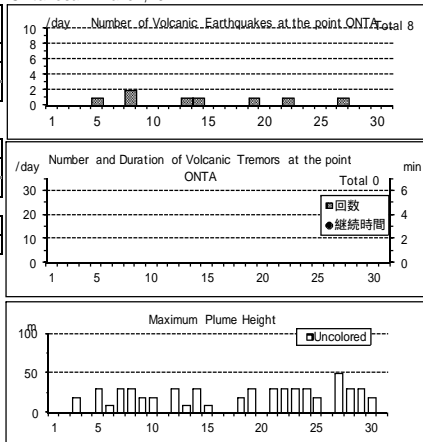
(27)御嶽山

震動観測(Seismic Observation)		
Observation Point: ONTA	月計 total	最大(起日) max (date)
火山性地震回数(Number of volcanic earthquakes)	8	2 (8)
火山性微動回数(Number of volcanic tremors)	-	-
微動継続時間(Duration of volcanic tremors) (min.)	-	-
Note: ONTA (N35 52.61' E137 29.73' H2,228m)		

遠望観測(Visual Observation)		
最大(起日) max (date)		
噴煙量(Quantity of plumes) (JMA's scale)	1 (abbr.)	
噴煙の高さ(Height of plumes) (m)	50 (27)	
噴煙の色(Color of plumes)	W	
他の火山現象(Other volcanic phenomena)	-	

Note: Plumes were from the Otaki summit Crater (A) and/or S6.
 Note: Uncolored:Plume color was White(W).
 Colored:Plume color was Light white(LW), Grayish white(GW), Gray(G) and other.

Ontakesan: March.2011



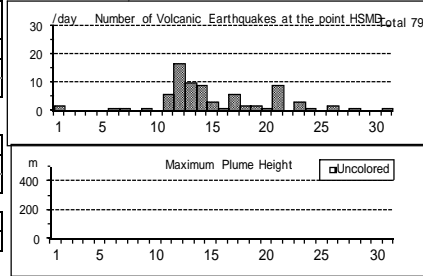
(28)白山

震動観測(Seismic Observation)		
Observation Point: HSMD	月計 total	最大(起日) max (date)
火山性地震回数(Number of volcanic earthquakes)	79	17 (12)
火山性微動回数(Number of volcanic tremors)	-	-
微動継続時間(Duration of volcanic tremors) (min.)	-	-
Note: HSMD (N36 08.78' E136 45.86' H2,345m)		

遠望観測(Visual Observation)		
最大(起日) max (date)		
噴煙量(Quantity of plumes) (JMA's scale)	-	
噴煙の高さ(Height of plumes) (m)	-	
噴煙の色(Color of plumes)	-	
他の火山現象(Other volcanic phenomena)	-	

Note: Plumes were from Summit Area of Hakusan(Location A).
 Note: Uncolored:Plume color was White(W).
 Colored:Plume color was Light white(LW), Grayish white(GW), Gray(G) and other.

Hakusan: March.2011



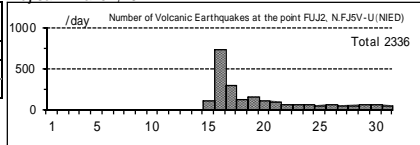
(29)富士山

震動観測(Seismic Observation)

Observation Point: FUJ2(-3.22), N.FJ5V-U(NIED)(3.23-)	月計 total	最大(起日) max (date)
火山性地震回数(Number of volcanic earthquakes)	2336	738 (16)
火山性微動回数(Number of volcanic tremors)	-	-
微動継続時間(Duration of volcanic tremors) (min.)	-	-

Note: FUJ2 (N35 21.64' E136 43.64' H3,772m)
N.FJ5V-U(NIED) (N35 23.08' E138 41.72' H2,090m)

Fujisan: March,2011



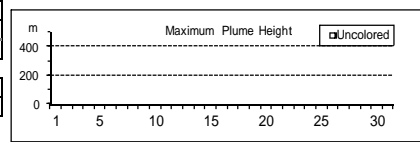
遠望観測(Visual Observation)

噴煙量(Quantity of plumes) (JMA's scale)	-
噴煙の高さ(Height of plumes) (m)	-
噴煙の色(Color of plumes)	-
他の火山現象(Other volcanic phenomena)	-

Note: Plumes were from Summit Crater(Location A),Hiei Crater(B)

Note: Uncolored:Plume color was White(W).

Colored:Plume color was Light white(LW), Grayish white(GW), Gray(G) and other.



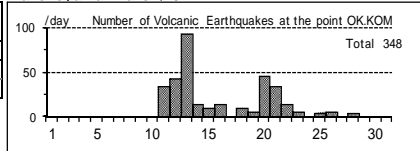
(30)箱根山

震動観測(Seismic Observation)

Observation Point: OK.KOM	月計 total	最大(起日) max (date)
火山性地震回数(Number of volcanic earthquakes)	348	94 (13)
火山性微動回数(Number of volcanic tremors)	-	-
微動継続時間(Duration of volcanic tremors) (min.)	-	-

Note: OK.KOM(N35 13.2' E139 02.0' H1,049m)

Hakoneyama: March,2011



遠望観測(Visual Observation)

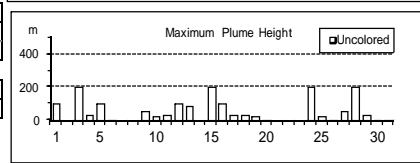
噴煙量(Quantity of plumes) (JMA's scale)	1 (abbr.)
噴煙の高さ(Height of plumes) (m)	200 (abbr.)
噴煙の色(Color of plumes)	W
他の火山現象(Other volcanic phenomena)	-

Note: Plumes were from Fumaroles near Owakudani(Location A),

Fumaroles near Soujigoku(B)

Note: Uncolored:Plume color was White(W).

Colored:Plume color was Light white(LW), Grayish white(GW), Gray(G) and other.



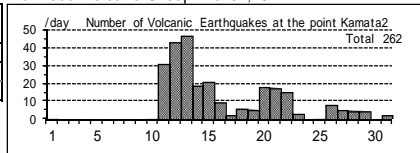
(31)伊豆東部火山群

震動観測(Seismic Observation)

Observation Point: ITBA,Kamata2	月計 total	最大(起日) max (date)
火山性地震回数(Number of volcanic earthquakes)	262	47 (13)
火山性微動回数(Number of volcanic tremors)	-	-
微動継続時間(Duration of volcanic tremors) (min.)	-	-

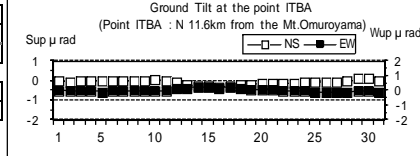
Note: ITBA (N35 00.46' E139 05.87' H12m)
Kamata2(N34 55.71' E139 03.65' H175m)

Izu-Tobu Volcano Group: March,2011



遠望観測(Visual Observation)

噴煙量(Quantity of plumes) (JMA's scale)	-
噴煙の高さ(Height of plumes) (m)	-
噴煙の色(Color of plumes)	-
他の火山現象(Other volcanic phenomena)	-



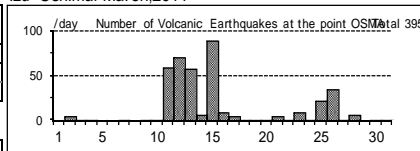
(32)伊豆大島

震動観測(Seismic Observation)

Observation Point: OSMA	月計 total	最大(起日) max (date)
火山性地震回数(Number of volcanic earthquakes)	395	90 (15)
火山性微動回数(Number of volcanic tremors)	-	-
微動継続時間(Duration of volcanic tremors) (min.)	-	-

Note: OSMA (N34 44.16' E139 23.21' H553m)

Izu-Oshima: March,2011



遠望観測(Visual Observation)

噴煙量(Quantity of plumes) (JMA's scale)	1 (abbr.)
噴煙の高さ(Height of plumes) (m)	200 (27)
噴煙の色(Color of plumes)	W
他の火山現象(Other volcanic phenomena)	-

Note:Plumes were from the Miharashima Summit Crater(Location A),

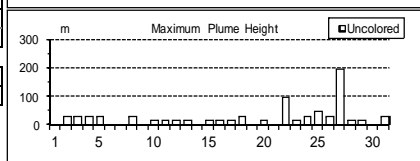
the Fumaroles at western side of Miharashizan(A1),

the Fumaroles near Kengamine(A2),

the Fumaroles at eastern side of Miharashizan(A3)

Note: Uncolored:Plume color was White(W).

Colored:Plume color was Light white(LW), Grayish white(GW), Gray(G) and other.



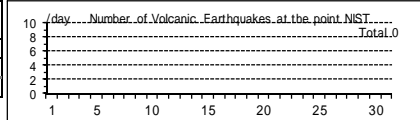
(33)新島

震動観測(Seismic Observation)

Observation Point: NIST	月計 total	最大(起日) max (date)
火山性地震回数(Number of volcanic earthquakes)	-	-
火山性微動回数(Number of volcanic tremors)	-	-
微動継続時間(Duration of volcanic tremors) (min.)	-	-

Note: NIST (N34 21.76' E139 14.92' H411m)

Niiijima: March,2011



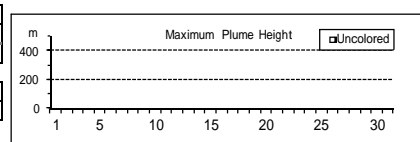
遠望観測(Visual Observation)

噴煙量(Quantity of plumes) (JMA's scale)	-
噴煙の高さ(Height of plumes) (m)	-
噴煙の色(Color of plumes)	-
他の火山現象(Other volcanic phenomena)	-

Note: Plumes were from Summit Area of Tangoyama(Location A)

Note: Uncolored:Plume color was White(W).

Colored:Plume color was Light white(LW), Grayish white(GW), Gray(G) and other.



(34) 神津島

震動観測(Seismic Observation)

	月計		最大(起日) max (date)
	total	max (date)	
Observation Point: KOTJ	-	-	-
火山性地震回数(Number of volcanic earthquakes)	-	-	-
火山性微動回数(Number of volcanic tremors)	-	-	-
微動継続時間(Duration of volcanic tremors) (min.)	-	-	-

Note: KOTJ (N34 13.24' E139 08.91' H372m)

遠望観測(Visual Observation)

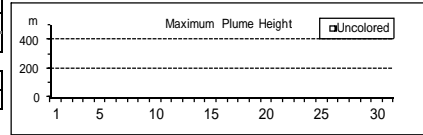
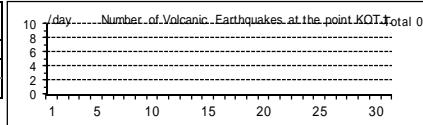
	最大(起日) max (date)	
	噴煙量(Quantity of plumes) (JMA's scale)	-
噴煙の高さ(Height of plumes) (m)	-	
噴煙の色(Color of plumes)	-	
他の火山現象(Other volcanic phenomena)	-	

Note: Plumes were from Summit Area of Tenjosan(Location A)

Note: Uncolored:Plume color was White(W).

Colored:Plume color was Light white(LW), Grayish white(GW), Gray(G) and other.

Kozushima: March,2011



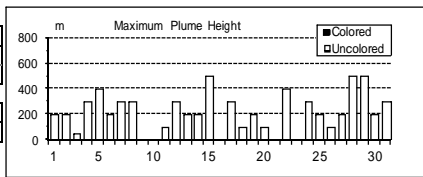
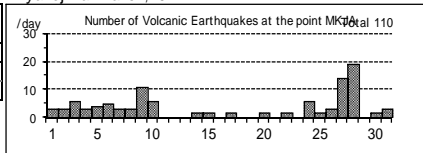
(35) 三宅島

震動観測(Seismic Observation)

	月計		最大(起日) max (date)
	total	max (date)	
Observation Point: MKJA	-	-	-
火山性地震回数(Number of volcanic earthquakes)	110	19 (28)	
火山性微動回数(Number of volcanic tremors)	3	3 (9)	
微動継続時間(Duration of volcanic tremors) (min.)	4	4 (9)	

Note: MKJA (N34 06.00' E139 31.92' H473m)

Miyakejima: March,2011



遠望観測(Visual Observation)

	最大(起日) max (date)	
	噴煙量(Quantity of plumes) (JMA's scale)	2 (abbr.)
噴煙の高さ(Height of plumes) (m)	500 (15,28,29)	
噴煙の色(Color of plumes)	W	
他の火山現象(Other volcanic phenomena)	-	

Note: Plumes were from the Summit Crater.

Note: Uncolored:Plume color was White(W).

Colored:Plume color was Light white(LW), Grayish white(GW), Gray(G) and other.

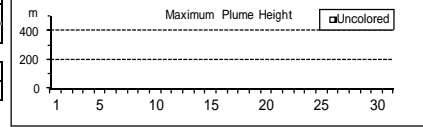
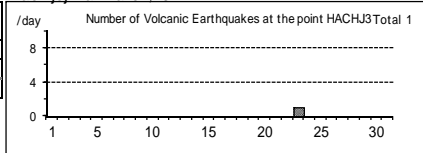
(36) 八丈島

震動観測(Seismic Observation)

	月計		最大(起日) max (date)
	total	max (date)	
Observation Point: HACHJ3	-	-	-
火山性地震回数(Number of volcanic earthquakes)	1	1 (23)	
火山性微動回数(Number of volcanic tremors)	-	-	
微動継続時間(Duration of volcanic tremors) (min.)	-	-	

Note: HACHJ3 (N33 06.3 E139 47.1 H 7 m)

Hachijojima: March,2011



遠望観測(Visual Observation)

	最大(起日) max (date)	
	噴煙量(Quantity of plumes) (JMA's scale)	-
噴煙の高さ(Height of plumes) (m)	-	
噴煙の色(Color of plumes)	-	
他の火山現象(Other volcanic phenomena)	-	

Note: Plumes were from Nishiyama Crater(Location A)

Note: Uncolored:Plume color was White(W).

Colored:Plume color was Light white(LW), Grayish white(GW), Gray(G) and other.

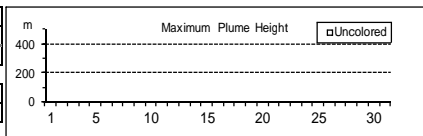
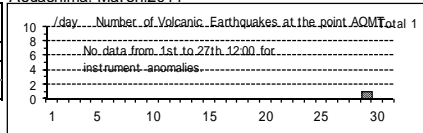
(37) 青ヶ島

震動観測(Seismic Observation)

	月計		最大(起日) max (date)
	total	max (date)	
Observation Point: AOMT	-	-	-
火山性地震回数(Number of volcanic earthquakes)	1	1 (29)	
火山性微動回数(Number of volcanic tremors)	-	-	
微動継続時間(Duration of volcanic tremors) (min.)	-	-	

Note: AOMT (N32 28.02' E139 45.64' H273m)

Aogashima: March,2011



遠望観測(Visual Observation)

	最大(起日) max (date)	
	噴煙量(Quantity of plumes) (JMA's scale)	-
噴煙の高さ(Height of plumes) (m)	-	
噴煙の色(Color of plumes)	-	
他の火山現象(Other volcanic phenomena)	-	

Note: Plumes were from Western flank of Maruyama(Location A)

Note: Uncolored:Plume color was White(W).

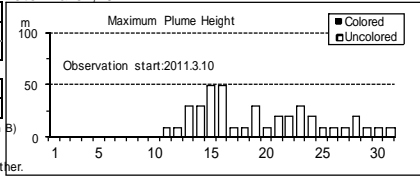
Colored:Plume color was Light white(LW), Grayish white(GW), Gray(G) and other.

(38)硫黄島

遠望観測(Visual Observation)		最大(起日) max (date)
噴煙量(Quantity of plumes) (JMA's scale)	1 (abbr.)	
噴煙の高さ(Height of plumes) (m)	50 (15,16)	
噴煙の色(Color of plumes)		W
他の火山現象(Other volcanic phenomena)		-

Note: Plumes were from Asodaikebotsuko (Location A)and/or Idogahama (Location B)
 Note: Uncolored-Plume color was White(W).
 Colored-Plume color was Light white(LW), Grayish white(GW), Gray(G) and other.

Ioto: March,2011

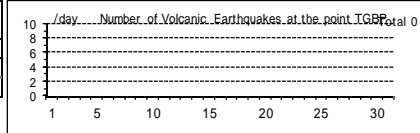


(39) 鶴見岳・伽藍岳

震動観測(Seismic Observation)		月計 total	最大(起日) max (date)
Observation Point: TGBP		-	-
火山性地震回数(Number of volcanic earthquakes)	-	-	-
火山性微動回数(Number of volcanic tremors)	-	-	-
微動継続時間(Duration of volcanic tremors) (min.)	-	-	-

Note: TGBP (N33 19.53' E131 27.07' H460m)

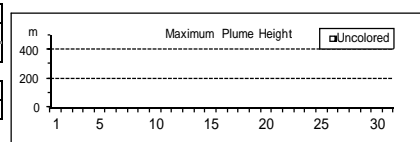
Tsurumidake and Garandake: March,2011



遠望観測(Visual Observation)		最大(起日) max (date)
噴煙量(Quantity of plumes) (JMA's scale)	-	-
噴煙の高さ(Height of plumes) (m)	-	-
噴煙の色(Color of plumes)		-
他の火山現象(Other volcanic phenomena)		-

Note: Plumes were from Region A and/or Region B.
 Note: Uncolored-Plume color was White(W).

Colored-Plume color was Light white(LW), Grayish white(GW), Gray(G) and other.

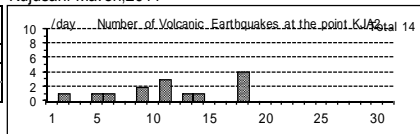


(40)九重山

震動観測(Seismic Observation)		月計 total	最大(起日) max (date)
Observation Point: KJA2		-	-
火山性地震回数(Number of volcanic earthquakes)	14	4 (18)	
火山性微動回数(Number of volcanic tremors)	-	-	-
微動継続時間(Duration of volcanic tremors) (min.)	-	-	-

Note: KJA2 (N33 06.20' E131 13.78' H1,282m)

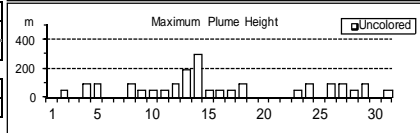
Kujusan: March,2011



遠望観測(Visual Observation)		最大(起日) max (date)
噴煙量(Quantity of plumes) (JMA's scale)	1 (abbr.)	
噴煙の高さ(Height of plumes) (m)	300 (14)	
噴煙の色(Color of plumes)		W
他の火山現象(Other volcanic phenomena)		-

Note: Plumes were from the east and/or north-east flank of Mt. Hoshho (Location A,B,C or D).
 Note: Uncolored-Plume color was White(W).

Colored-Plume color was Light white(LW), Grayish white(GW), Gray(G) and other.

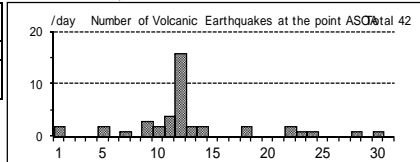


(41)阿蘇山

震動観測(Seismic Observation)		月計 total	最大(起日) max (date)
Observation Point: ASOA		-	-
火山性地震回数(Number of volcanic earthquakes)	42	16 (12)	
孤立型火山性微動回数 (Number of isolated volcanic tremors)	864	58 (28)	

Note: ASOA (N32 53.10' E131 04.65' H1,163m)

Asosan: March,2011



遠望観測(Visual Observation)		最大(起日) max (date)
噴煙量(Quantity of plumes) (JMA's scale)	1 (abbr.)	
噴煙の高さ(Height of plumes) (m)	500 (30)	

噴煙の色(Color of plumes)		W
他の火山現象(Other volcanic phenomena)		-

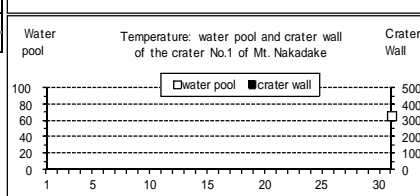
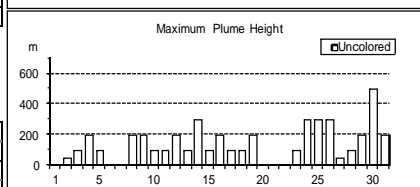
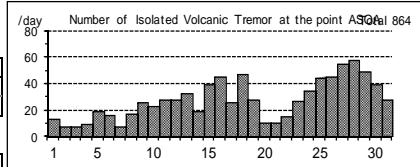
Note: Plumes were from the Crater No.1 of Mt. Nakadake.

Note: Uncolored-Plume color was White(W).

Colored-Plume color was Light white(LW), Grayish white(GW), Gray(G) and other.

現地観測(Field Observation)		最高(起日) max (date)
		最低(起日) min (date)
火口内の湯だまりの表面温度 (Surface temperature on the water pool in the crater) ()	66 (31)	66 (31)
火口壁の表面温度 (Surface temperature on the crater wall) ()	-	-

Observation Point:the Crater No.1 of Mt. Nakadake



(42)雲仙岳

震動観測(Seismic Observation)

Observation Point: UNZA	月計	最大(起日)
	total	max (date)
火山性地震回数(Number of volcanic earthquakes)	9	3 (5)
火山性微動回数(Number of volcanic tremors)	-	-
微動継続時間(Duration of volcanic tremors) (min)	-	-

Note: UNZA (N32°44.10' E130°16.05' H769m)

遠望観測(Visual Observation)

Observation Point: UNZA	最大(起日)
	max (date)
噴煙量(Quantity of plumes) (JMA's scale)	1 (abbr.)
噴煙の高さ(Height of plumes) (m)	100 (26)

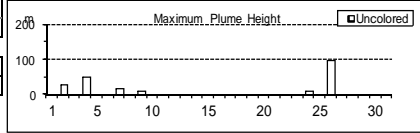
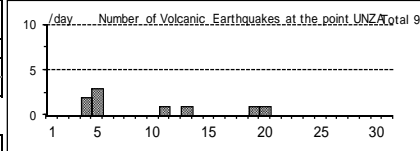
噴煙の色(Color of plumes)	W
他の火山現象(Other volcanic phenomena)	-

Note: Plumes were from the 10th Lava Dome(Location A10) and/or the 11th Lava Dome(A11).

Note: Uncolored:Plume color was White(W).

Colored:Plume color was Light white(LW), Grayish white(GW), Gray(G) and other.

Unzendake: March,2011



(43)霧島山

新燃岳 (Shinmoedake)

震動観測(Seismic Observation)

Observation Point: KIRA	月計	最大(起日)
	total	max (date)
火山性地震回数(Number of volcanic earthquakes)	2261	300 (13)
火山性微動回数(Number of volcanic tremors)	24	3 (abbr.)
微動継続時間(Duration of volcanic tremors) (min)	5257	1440 (1,2,3)

Note: KIRA (N31°54.00' E130°52.27' H1,035m)

遠望観測(Visual Observation)

Observation Point: KIRA	最大(起日)
	max (date)
噴煙量(Quantity of plumes) (JMA's scale)	5 (13)
噴煙の高さ(Height of plumes) (m)	4000 (13)

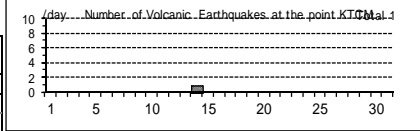
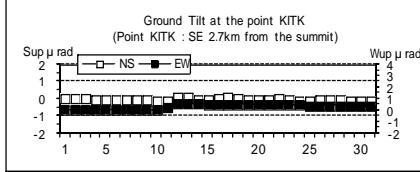
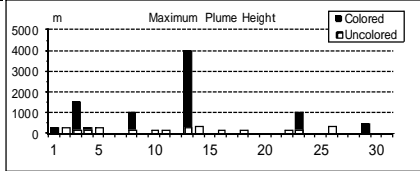
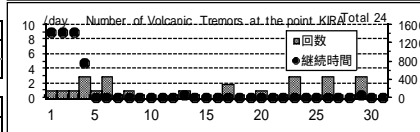
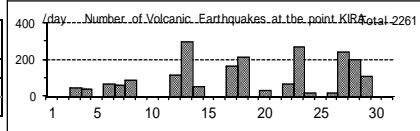
噴煙の色(Color of plumes)	W,LW,GW
他の火山現象(Other volcanic phenomena)	-

Note: Plumes were from the Shinmoedake Crater

Note: Uncolored:Plume color was White(W).

Colored:Plume color was Light white(LW), Grayish white(GW), Gray(G) and other.

Kirishimayama: March,2011



御鉢(Ohachi)

震動観測(Seismic Observation)

Observation Point: KTCM	月計	最大(起日)
	total	max (date)
火山性地震回数(Number of volcanic earthquakes)	1	1 (14)
火山性微動回数(Number of volcanic tremors)	-	-
微動継続時間(Duration of volcanic tremors) (min)	-	-

Note: KTCM (N31°53.17' E130°55.18' H1,540m)

遠望観測(Visual Observation)

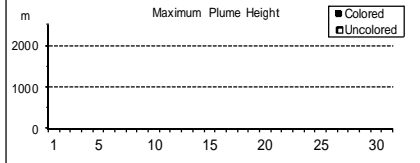
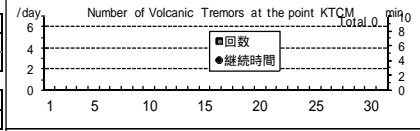
Observation Point: KTCM	最大(起日)
	max (date)
噴煙量(Quantity of plumes) (JMA's scale)	-
噴煙の高さ(Height of plumes) (m)	-

噴煙の色(Color of plumes)	-
他の火山現象(Other volcanic phenomena)	-

Note: Plumes were from the Ohachi Crater

Note: Uncolored:Plume color was White(W).

Colored:Plume color was Light white(LW), Grayish white(GW), Gray(G) and other.



(44)桜島

震動観測(Seismic Observation)		
Observation Point: SKRB	月計 total	最大(起日) max (date)
火山性地震回数(Number of volcanic earthquakes)	649	84 (9)
火山性微動回数(Number of volcanic tremors)	251	36 (1)
微動継続時間(Duration of volcanic tremors) (min)	934	257 (25)

Note: SKRB (N31°35.62' E130°38.35' H455m)

遠望観測(Visual Observation)		
	月計 total	最大(起日) max (date)
爆発回数(Number of explosive eruptions)	57	5 (26)
降灰量(Amount of ash fall) (g/m ²)	7	6 (14)

AB火口 (A,B crater)		最大(起日) max (date)
噴煙量(Quantity of plumes) (JMA's scale)	1 (abbr.)	
噴煙の高さ(Height of plumes) (m)	200 (3,23)	

昭和火口 (Showa crater)		最大(起日) max (date)
噴煙量(Quantity of plumes) (JMA's scale)	3 (abbr.)	
噴煙の高さ(Height of plumes) (m)	1800 (26)	

噴煙の色(Color of plumes)	W,LW,GW
他の火山現象(Other volcanic phenomena)	Gl,As,Bm, Af

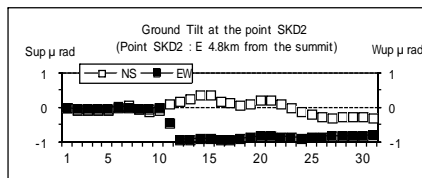
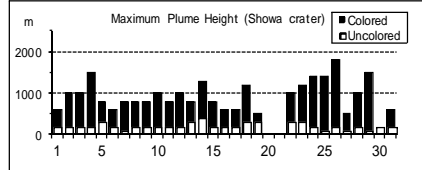
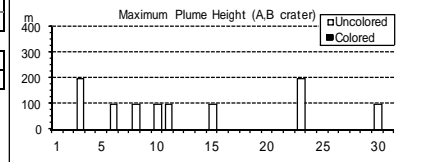
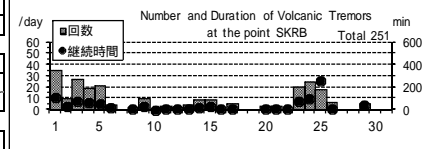
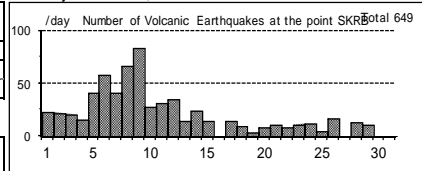
Note: Plumes were from Mt. Minamidake A Crater(A), B Crater(B) and Showa Crater(S)

Note: Uncolored:Plume color was White(W).

Colored:Plume color was Light white(LW), Grayish white(GW), Gray(G) and other.

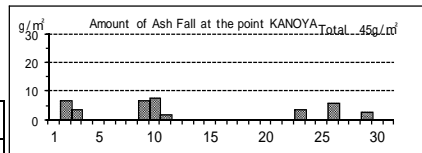
Visual observation of explosion is described on another sheet.

Sakurajima: March,2011



地磁気観測所鹿屋出張所による桜島の日降灰量観測
Extra observation of daily amounts of ash fall from Sakurajima by the Kanoya Satellite Observatory, the Magnetic Observatory, JMA
Date: daily (a.m. 0900)

遠望観測(Visual Observation)		
Observation Point: KANOYA	月計 total	最大(起日) max (date)
降灰量(Amount of ash fall) (g/m ²)	45	8 (10)



(45)薩摩硫黄島

震動観測(Seismic Observation)		
Observation Point: ST11	月計 total	最大(起日) max (date)
火山性地震回数(Number of volcanic earthquakes)	136	11 (24)
火山性微動回数(Number of volcanic tremors)	1	1 (10)
微動継続時間(Duration of volcanic tremors) (min)	0.3	0.3 (10)

Note: ST11 (N30°47.26' E130°18.12' H380m)

遠望観測(Visual Observation)		
	最大(起日) max (date)	
噴煙量(Quantity of plumes) (JMA's scale)	1 (abbr.)	
噴煙の高さ(Height of plumes) (m)	400 (26)	

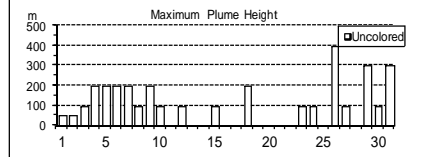
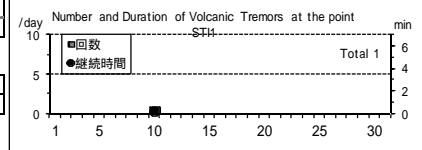
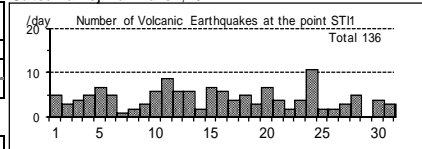
噴煙の色(Color of plumes)	W
他の火山現象(Other volcanic phenomena)	Gl

Note: Uncolored:Plume color was White(W)*.

Colored:Plume color was Light white(LW), Grayish white(GW), Gray(G) and other.

*Uncolored plumes mean only White(W) color since 1st April, 2010.

Satsuma-Iojima: March,2011



(46) 口永良部島

震動観測(Seismic Observation)

Observation Point: KER1	月計		最大(起日)
	total	max (date)	
火山性地震回数(Number of volcanic earthquakes)	71	8 (26)	
火山性微動回数(Number of volcanic tremors)	63	6 (31)	
微動継続時間(Duration of volcanic tremors) (min.)	109	12 (27)	

Note: KER1 (N30°26.94' E130°12.86' H570m)

遠望観測(Visual Observation)

最大(起日) max (date)		
	total	max (date)
噴煙量(Quantity of plumes) (JMA's scale)	1	(abbr.)
噴煙の高さ(Height of plumes) (m)	200 (12.14.19)	

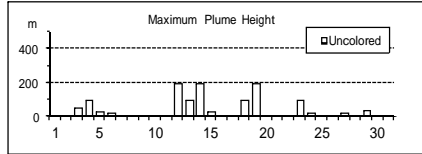
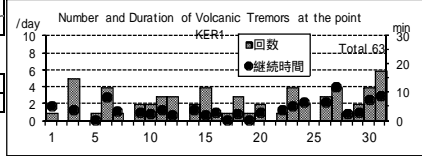
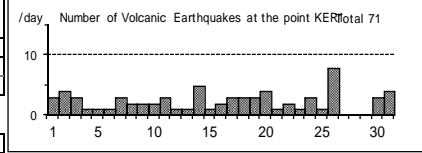
噴煙の色(Color of plumes)	W
他の火山現象(Other volcanic phenomena)	-

Note: Uncolored:Plume color was White(W)*.

Colored:Plume color was Light white(LW), Grayish white(GW), Gray(G) and other.

*Uncolored plumes mean only White(W) color since 1st April, 2010.

Kuchierabujima: March,2011



(47) 諏訪之瀬島

震動観測(Seismic Observation)

Observation Point: SWA1	月計		最大(起日)
	total	max (date)	
火山性地震回数(Number of volcanic earthquakes)	558	42 (11)	
火山性微動回数(Number of volcanic tremors)	160	35 (19)	
微動継続時間(Duration of volcanic tremors) (min.)	1095	296 (19)	

Note: SWA1 (N29°37.73' E129°42.27' H450m)

* Continuous volcanic tremors occurred intermittently in this month.

Number of volcanic tremors and duration are not including the continuous volcanic tremor.

遠望観測(Visual Observation)

最大(起日) max (date)		
	total	max (date)
爆発回数(Number of explosive eruptions)	5	2 (19)

最大(起日) max (date)		
	total	max (date)
噴煙量(Quantity of plumes) (JMA's scale)	2	(4.12.24)
噴煙の高さ(Height of plumes) (m)	500	(12)

噴煙の色(Color of plumes)	W,GW
他の火山現象(Other volcanic phenomena)	GI

Note: Uncolored:Plume color was White(W)*

Colored:Plume color was Light white(LW), Grayish white(GW),

Gray(G) and other.

*Uncolored plumes mean only White(W) color since 1st April, 2010.

Suwanosejima: March,2011

