

火山観測 Summary of Observations on Volcanoes

常時観測 平成21年(2009年)12月

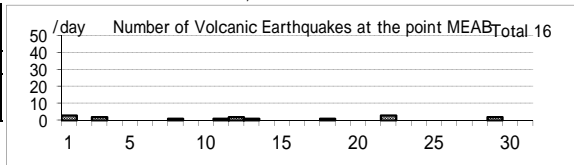
Constant Observation in December,2009

(1) 雌阿寒岳

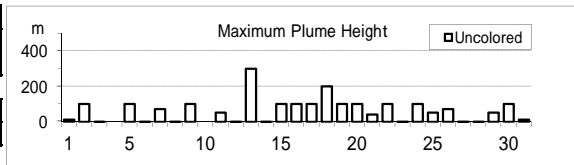
震動観測(Seismic Observation)	月計 total	最大(起日) max (date)
Observation Point: MEAB		
火山性地震回数(Number of volcanic earthquakes)	16	3 (1)
火山性微動回数(Number of volcanic tremors)	0	0
微動継続時間(Duration of volcanic tremors) (min.)	-	-

Note: MEAB (N43 22.8' E143 58.7' H680m)

Meakandake: December,2009



遠望観測(Visual Observation)	最大(起日) max (date)
噴煙量(Quantity of plumes) (JMA's scale)	1 (abbr.)
噴煙の高さ(Height of plumes) (m)	300 (13)
噴煙の色(Color of plumes)	W
他の火山現象(Other volcanic phenomena)	-



Note: Plumes were from the Pommachineshiri Summit Crater(Location T), the Nakamachineshiri Crater(U), the Akanuma Crater(M) and/or Pommachineshiri NW Fumaroles(N).

Note: Uncolored:Plume color was White(W).

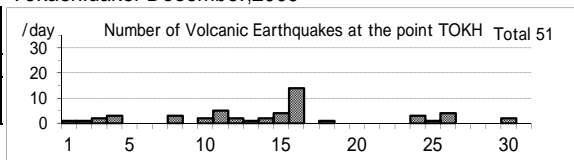
Colored:Plume color was Light white(LW), Grayish white(GW), Gray(G) and other.

(2) 十勝岳

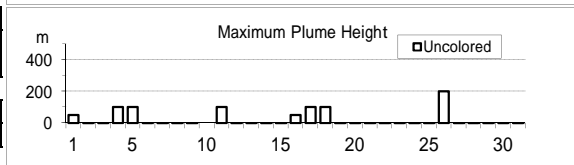
震動観測(Seismic Observation)	月計 total	最大(起日) max (date)
Observation Point: TOKH		
火山性地震回数(Number of volcanic earthquakes)	51	14 (16)
火山性微動回数(Number of volcanic tremors)	0	0
微動継続時間(Duration of volcanic tremors) (min.)	-	-

Note: TOKH (N43 26.0' E142 40.2' H1,355m)

Tokachidake: December,2009



遠望観測(Visual Observation)	最大(起日) max (date)
噴煙量(Quantity of plumes) (JMA's scale)	1 (abbr.)
噴煙の高さ(Height of plumes) (m)	200 (26)
噴煙の色(Color of plumes)	W
他の火山現象(Other volcanic phenomena)	-



Note: Plumes were from the Taisho Crater(Location X),

the 62 crater Area(P,Q,Y), the Furikozawa Fumaroles (F) and/or the Kyufun Crater (Z).

Note: Uncolored:Plume color was White(W).

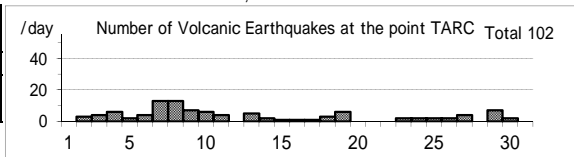
Colored:Plume color was Light white(LW), Grayish white(GW), Gray(G) and other.

(3) 樽前山

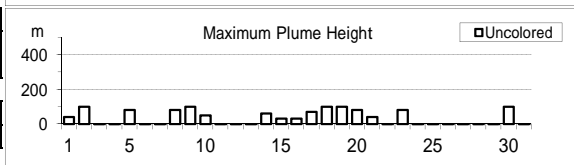
震動観測(Seismic Observation)	月計 total	最大(起日) max (date)
Observation Point: TARC		
火山性地震回数(Number of volcanic earthquakes)	102	13 (7,8)
火山性微動回数(Number of volcanic tremors)	0	0
微動継続時間(Duration of volcanic tremors) (min.)	-	-

Note: TARC (N42 42.2' E141 22.6' H638m)

Tarumaesan: December,2009



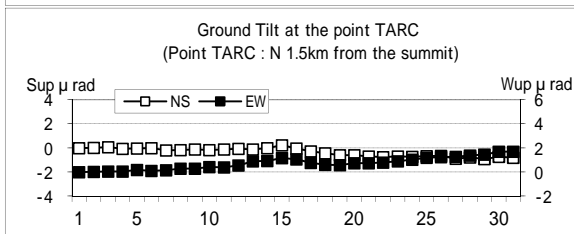
遠望観測(Visual Observation)	最大(起日) max (date)
噴煙量(Quantity of plumes) (JMA's scale)	1 (abbr.)
噴煙の高さ(Height of plumes) (m)	100 (abbr.)
噴煙の色(Color of plumes)	W
他の火山現象(Other volcanic phenomena)	-



Note: Plumes were from the Summit Area(Location A, B and/or E).

Note: Uncolored:Plume color was White(W).

Colored:Plume color was Light white(LW), Grayish white(GW), Gray(G) and other.



(4)有珠山

震動観測(Seismic Observation)	月計 total	最大(起日) max (date)
Observation Point: USUA		
火山性地震回数(Number of volcanic earthquakes)	23	3 (4,13)
火山性微動回数(Number of volcanic tremors)	0	0
微動継続時間(Duration of volcanic tremors) (min.)	-	-

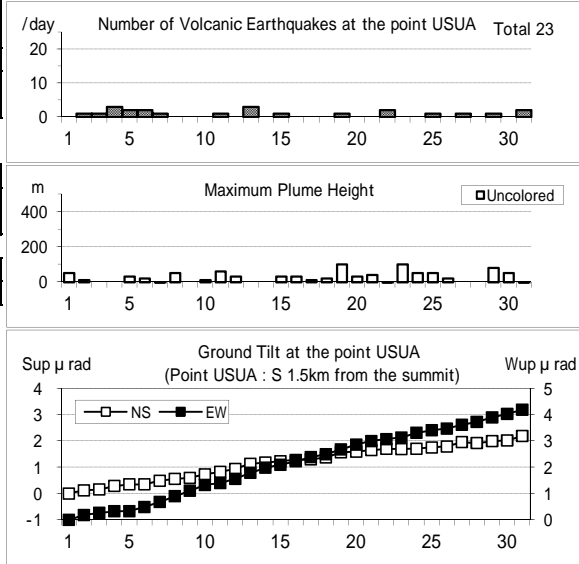
Note: USUA (N42°31.7' E140°50.2' H246m)

遠望観測(Visual Observation)	最大(起日) max (date)
噴煙量(Quantity of plumes) (JMA's scale)	1 (abbr.)
噴煙の高さ(Height of plumes) (m)	100 (19,23)
噴煙の色(Color of plumes)	W
他の火山現象(Other volcanic phenomena)	-

Note: Plumes were from the Summit Area of Usuzan(Location P) , Mt.showa-shinazan(Z), Nishi-yama vent group(N) and Konpira-yama vent group(K).

Note: Uncolored:Plume color was White(W).
Colored:Plume color was Light white(LW), Grayish white(GW), Gray(G) and other.

Usuzan: December,2009



(5)北海道駒ヶ岳

震動観測(Seismic Observation)	月計 total	最大(起日) max (date)
Observation Point: KOMA		
火山性地震回数(Number of volcanic earthquakes)	0	0
火山性微動回数(Number of volcanic tremors)	0	0
微動継続時間(Duration of volcanic tremors) (min.)	-	-

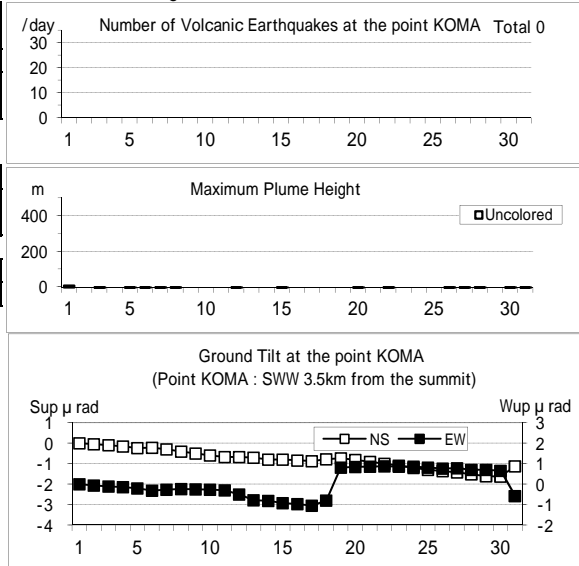
Note: KOMA (N42°03.2' E140°38.3' H265m)

遠望観測(Visual Observation)	最大(起日) max (date)
噴煙量(Quantity of plumes) (JMA's scale)	1 (1)
噴煙の高さ(Height of plumes) (m)	10 (1)
噴煙の色(Color of plumes)	W
他の火山現象(Other volcanic phenomena)	-

Note: Plumes were from the Showa-4 Crater(Location D1) and/or the 96 South Crater(D2).

Note: Uncolored:Plume color was White(W).
Colored:Plume color was Light white(LW), Grayish white(GW), Gray(G) and other.

Hokkaido-Komagatake: December,2009



(6)吾妻山

震動観測(Seismic Observation)	月計 total	最大(起日) max (date)
Observation Point: AZUA		
火山性地震回数(Number of volcanic earthquakes)	124	12 (8)
火山性微動回数(Number of volcanic tremors)	0	0
微動継続時間(Duration of volcanic tremors) (min.)	-	-

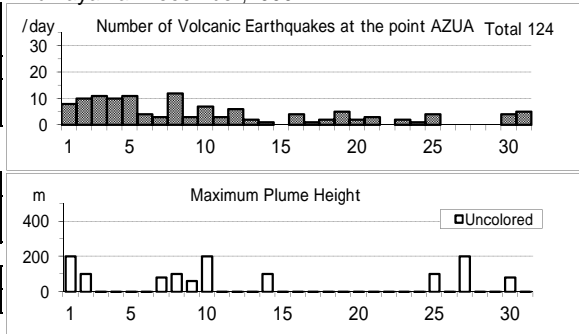
Note: AZUA (N37°43.3' E140°16.5' H1,295m)

遠望観測(Visual Observation)	最大(起日) max (date)
噴煙量(Quantity of plumes) (JMA's scale)	1 (abbr.)
噴煙の高さ(Height of plumes) (m)	200 (1,10,27)
噴煙の色(Color of plumes)	W
他の火山現象(Other volcanic phenomena)	-

Note: Plumes were from the Oana Crater

Note: Uncolored:Plume color was White(W).
Colored:Plume color was Light white(LW), Grayish white(GW), Gray(G) and other.

Azumayama: December,2009



(7)安達太良山

震動観測(Seismic Observation)

	月計 total	最大(起日) max (date)
火山性地震回数(Number of volcanic earthquakes)	2	1 (10,26)
火山性微動回数(Number of volcanic tremors)	0	0
微動継続時間(Duration of volcanic tremors) (min.)	-	-

Note: ADTB(N37° 38.1 E140° 18.2 H1,320m)

遠望観測(Visual Observation)

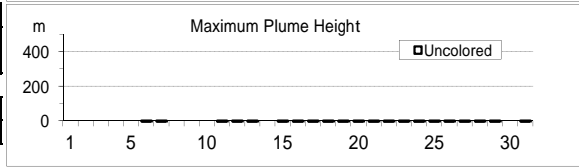
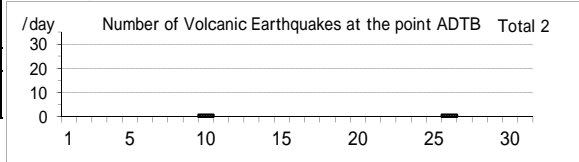
	最大(起日) max (date)
噴煙量(Quantity of plumes) (JMA's scale)	-
噴煙の高さ(Height of plumes) (m)	-
噴煙の色(Color of plumes)	-
他の火山現象(Other volcanic phenomena)	-

Note: Plumes were from the Numanodaira - SW area.

Note: Uncolored:Plume color was White(W).

Colored:Plume color was Light white(LW), Grayish white(GW), Gray(G) and other.

Adatarayama: December,2009



(8)磐梯山

震動観測(Seismic Observation)

	月計 total	最大(起日) max (date)
火山性地震回数(Number of volcanic earthquakes)	10	5 (14)
火山性微動回数(Number of volcanic tremors)	0	0
微動継続時間(Duration of volcanic tremors) (min.)	-	-

Note: BNDA (N37° 35.0 E140° 04.8 H1000m)

遠望観測(Visual Observation)

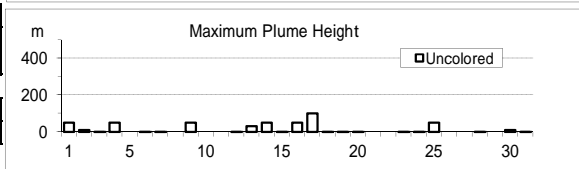
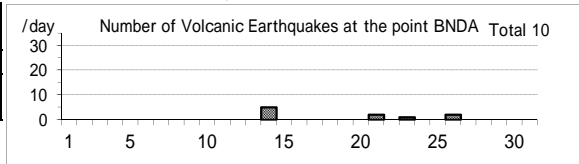
	最大(起日) max (date)
噴煙量(Quantity of plumes) (JMA's scale)	1 (abbr.)
噴煙の高さ(Height of plumes) (m)	100 (17)
噴煙の色(Color of plumes)	W
他の火山現象(Other volcanic phenomena)	-

Note: Plumes were from the Fumarolic area in Crater wall.

Note: Uncolored:Plume color was White(W).

Colored:Plume color was Light white(LW), Grayish white(GW), Gray(G) and other.

Bandaisan: December,2009



(9)那須岳

震動観測(Seismic Observation)

	月計 total	最大(起日) max (date)
火山性地震回数(Number of volcanic earthquakes)	5	3 (27)
火山性微動回数(Number of volcanic tremors)	0	0
微動継続時間(Duration of volcanic tremors) (min.)	-	-

Note: NSUA (N37° 06.2' E139° 59.6' H1,083m)

遠望観測(Visual Observation)

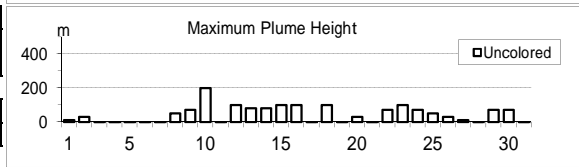
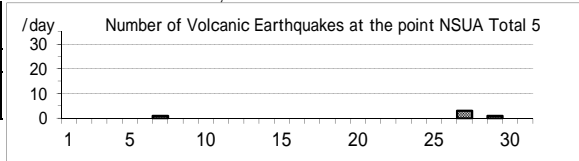
	最大(起日) max (date)
噴煙量(Quantity of plumes) (JMA's scale)	1 (abbr.)
噴煙の高さ(Height of plumes) (m)	200 (10)
噴煙の色(Color of plumes)	W
他の火山現象(Other volcanic phenomena)	-

Note: Plumes were from the west flank of Mt. Nasudake.

Note: Uncolored:Plume color was White(W).

Colored:Plume color was Light white(LW), Grayish white(GW), Gray(G) and other.

Nasudake: December,2009



(10)草津白根山

震動観測(Seismic Observation)

	月計 total	最大(起日) max (date)
火山性地震回数(Number of volcanic earthquakes)	41	8 (12)
火山性微動回数(Number of volcanic tremors)	0	0
微動継続時間(Duration of volcanic tremors) (min.)	-	-

Note: KSHA (N36° 38.9' E138° 32.7' H1,933m)

遠望観測(Visual Observation)

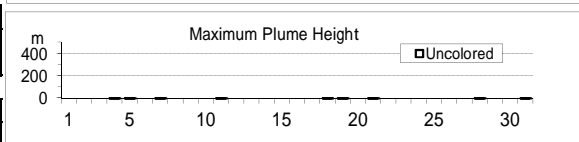
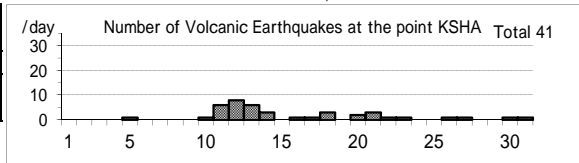
	最大(起日) max (date)
噴煙量(Quantity of plumes) (JMA's scale)	-
噴煙の高さ(Height of plumes) (m)	-
噴煙の色(Color of plumes)	-
他の火山現象(Other volcanic phenomena)	-

Note: Plumes were from the Yugama Crater and Fumaroles at northern side of Yugama Crater

Note: Uncolored:Plume color was White(W).

Colored:Plume color was Light white(LW), Grayish white(GW), Gray(G) and other.

Kusatsu-Shiranesan: December,2009



(11)浅間山

震動観測(Seismic Observation) Observation Point: ASMB	月計 total	最大(起日) max (date)
火山性地震回数(Number of volcanic earthquakes)	2347	135 (29)
火山性微動回数(Number of volcanic tremors)	2	1 (12,29)
微動継続時間(Duration of volcanic tremors) (min.)	5	3 (12)

Note: ASMB (N36°23.4' E138°31.1' H1,864m)

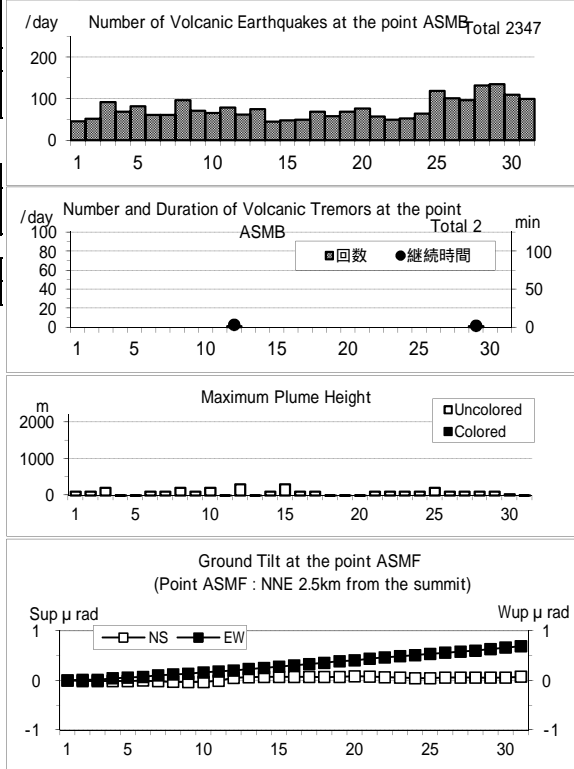
遠望観測(Visual Observation)	最大(起日) max (date)
噴煙量(Quantity of plumes) (JMA's scale)	2 (12)
噴煙の高さ(Height of plumes) (m)	300 (12,15)
噴煙の色(Color of plumes)	W
他の火山現象(Other volcanic phenomena)	-

Note: Plumes were from the Kamayama Crater(Location A).

Note: Uncolored:Plume color was White(W).

Colored:Plume color was Light white(LW), Grayish white(GW), Gray(G) and other.

Asamayama: December,2009



(12)御嶽山

震動観測(Seismic Observation) Observation Point: ONTA	月計 total	最大(起日) max (date)
火山性地震回数(Number of volcanic earthquakes)	1	1 (27)
火山性微動回数(Number of volcanic tremors)	0	0
微動継続時間(Duration of volcanic tremors) (min.)	-	-

Note: ONTA (N35°52.6' E137°29.7' H2,228m)

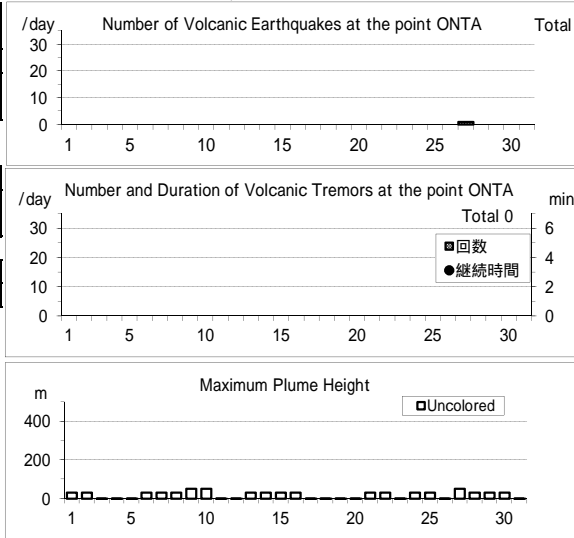
遠望観測(Visual Observation)	最大(起日) max (date)
噴煙量(Quantity of plumes) (JMA's scale)	1 (abbr.)
噴煙の高さ(Height of plumes) (m)	50 (9,10,27)
噴煙の色(Color of plumes)	W
他の火山現象(Other volcanic phenomena)	-

Note: Plumes were from the Otaki summit Crater (A) and/or S6

Note: Uncolored:Plume color was White(W).

Colored:Plume color was Light white(LW), Grayish white(GW), Gray(G) and other.

Ontakesan: December,2009



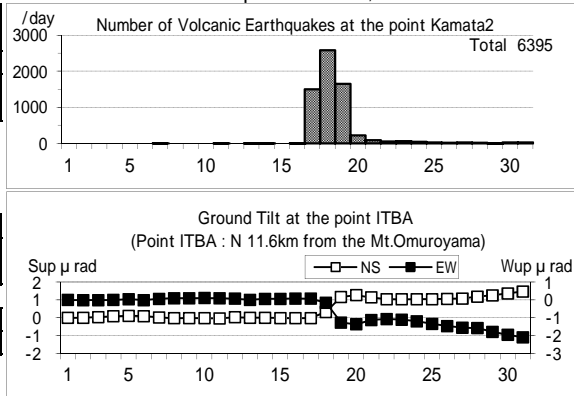
(13)伊豆東部火山群

震動観測(Seismic Observation) Observation Point: Kamata2	月計 total	最大(起日) max (date)
火山性地震回数(Number of volcanic earthquakes)	6395	2583 (18)
火山性微動回数(Number of volcanic tremors)	0	0
微動継続時間(Duration of volcanic tremors) (min.)	-	-

Note: Kamata2(N34°55.71' E139°03.65' H175m)

遠望観測(Visual Observation)	最大(起日) max (date)
噴煙量(Quantity of plumes) (JMA's scale)	-
噴煙の高さ(Height of plumes) (m)	-
噴煙の色(Color of plumes)	-
他の火山現象(Other volcanic phenomena)	-

Izu-Tobu Volcano Group: December,2009



(14)伊豆大島

震動観測(Seismic Observation) Observation Point: OSMA	月計 total	最大(起日) max (date)
火山性地震回数(Number of volcanic earthquakes)	29	5 (5)
火山性微動回数(Number of volcanic tremors)	0	0
微動継続時間(Duration of volcanic tremors) (min.)	-	-

Note: OSMA (N34 44.2' E139 23.2' H553m)

遠望観測(Visual Observation)	最大(起日) max (date)
噴煙量(Quantity of plumes) (JMA's scale)	1 (abbr.)
噴煙の高さ(Height of plumes) (m)	50 (2.8)

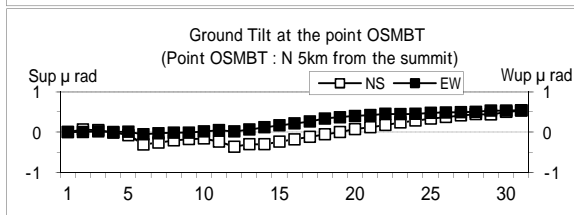
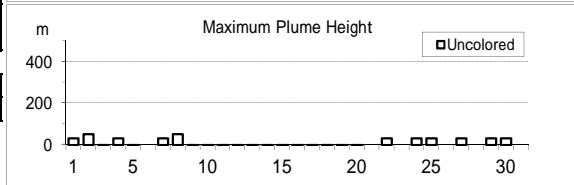
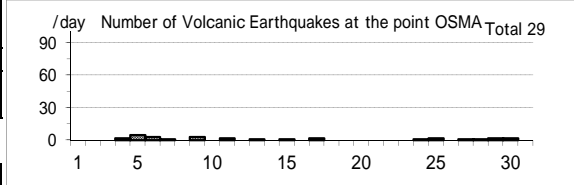
噴煙の色(Color of plumes)	W
他の火山現象(Other volcanic phenomena)	-

Note: Plumes were from the Miharayama Summit Crater(Location A), the Fumaroles at western side of Miharashinzan(A1), the Fumaroles near Kengamine(A2), the Fumaroles at eastern side of Miharashinzan(A3)

Note: Uncolored: Plume color was White(W).

Colored: Plume color was Light white(LW), Grayish white(GW), Gray(G) and other.

Izu-Oshima: December,2009



(15)三宅島

震動観測(Seismic Observation) Observation Point: MKJA	月計 total	最大(起日) max (date)
火山性地震回数(Number of volcanic earthquakes)	2515	135 (15)
火山性微動回数(Number of volcanic tremors)	0	0
微動継続時間(Duration of volcanic tremors) (min.)	-	-

Note: MKJA (N34 05.9' E139 32.0' H527m)

遠望観測(Visual Observation)	最大(起日) max (date)
噴煙量(Quantity of plumes) (JMA's scale)	2 (29)
噴煙の高さ(Height of plumes) (m)	400 (29)

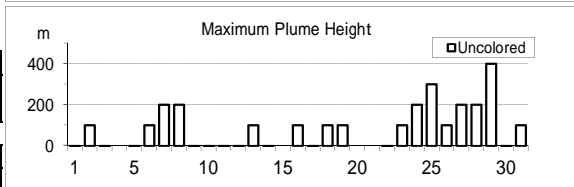
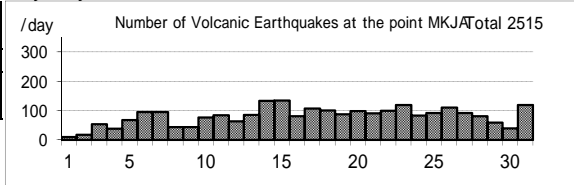
噴煙の色(Color of plumes)	W
他の火山現象(Other volcanic phenomena)	-

Note: Plumes were from the Summit Crater.

Note: Uncolored: Plume color was White(W).

Colored: Plume color was Light white(LW), Grayish white(GW), Gray(G) and other.

Miyakejima: December,2009



(16)九重山

震動観測(Seismic Observation)

Observation Point: KJUA	月計 total	最大(起日) max (date)
火山性地震回数(Number of volcanic earthquakes)	4	1 (abbr.)
火山性微動回数(Number of volcanic tremors)	0	0
微動継続時間(Duration of volcanic tremors) (min.)	-	-

Note: KJUA (N33°06.2' E131°13.7' H1,280m)

遠望観測(Visual Observation)

Observation Point: KJUA	最大(起日) max (date)
噴煙量(Quantity of plumes) (JMA's scale)	2 (13)
噴煙の高さ(Height of plumes) (m)	300 (abbr.)

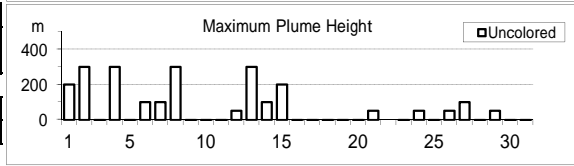
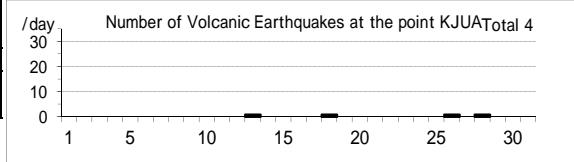
噴煙の色(Color of plumes)	W
他の火山現象(Other volcanic phenomena)	-

Note: Plumes were from the east and/or north-east flank of Mt. Hossho (Location A,B,C or D).

Note: Uncolored:Plume color was White(W).

Colored:Plume color was Light white(LW), Grayish white(GW), Gray(G) and other.

Kujusan: December,2009



(17)阿蘇山

震動観測(Seismic Observation)

Observation Point: ASOA	月計 total	最大(起日) max (date)
火山性地震回数(Number of volcanic earthquakes)	49	12 (30,31)
孤立型火山性微動回数 (Number of isolated volcanic tremors)	9284	359 (30)

Note: ASOA (N32°53.1' E131°04.7' H1,163m)

遠望観測(Visual Observation)

Observation Point: ASOA	最大(起日) max (date)
噴煙量(Quantity of plumes) (JMA's scale)	2 (24,26,29)
噴煙の高さ(Height of plumes) (m)	500 (24)

噴煙の色(Color of plumes)	W
他の火山現象(Other volcanic phenomena)	-

Note: Plumes were from the Crater No.1 of Mt. Nakadake.

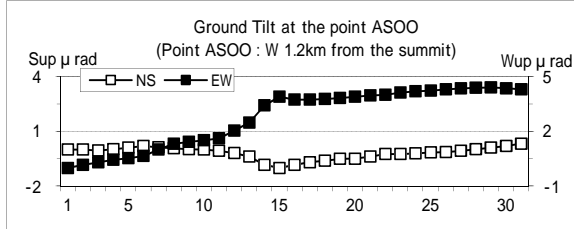
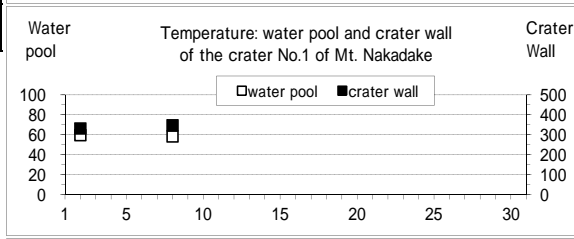
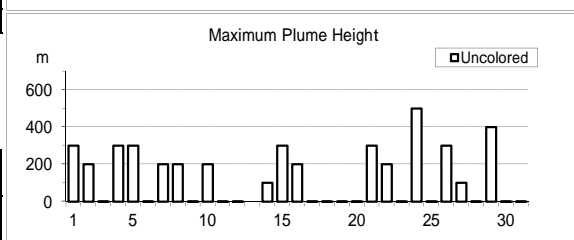
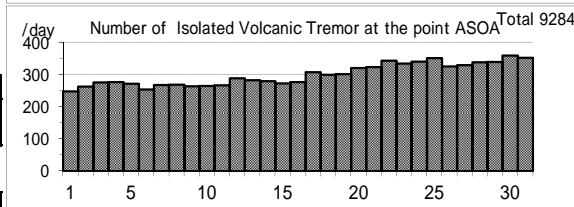
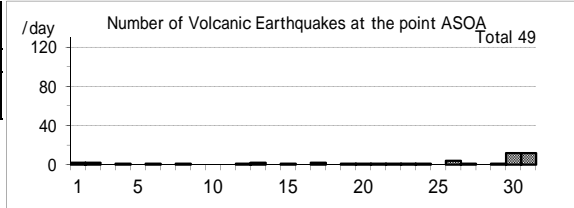
Note: Uncolored:Plume color was White(W).

Colored:Plume color was Light white(LW), Grayish white(GW), Gray(G) and other.

現地観測(Field Observation)

Observation Point: the Crater No.1 of Mt. Nakadake	最高(起日) max (date)	最低(起日) min (date)
	火口内の湯だまりの表面温度 (Surface temperature on the water pool in the crater) ()	60 (2)
火口壁の表面温度 (Surface temperature on the crater wall) ()	349 (8)	333 (2)

Asosan: December,2009



(18)雲仙岳

震動観測(Seismic Observation)

Observation Point: UNZA	月計	最大(起日)
	total	max (date)
火山性地震回数(Number of volcanic earthquakes)	3	2 (24)
火山性微動回数(Number of volcanic tremors)	0	0
微動継続時間(Duration of volcanic tremors) (min)	-	-

Note: UNZA (N32°44.1' E130°16.1' H769m)

遠望観測(Visual Observation)

Observation Point: UNZA	最大(起日)
	max (date)
噴煙量(Quantity of plumes) (JMA's scale)	1 (13)
噴煙の高さ(Height of plumes) (m)	100 (13)

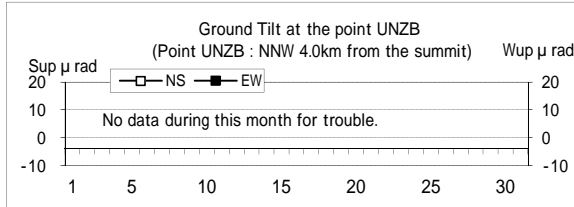
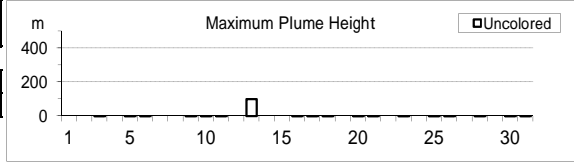
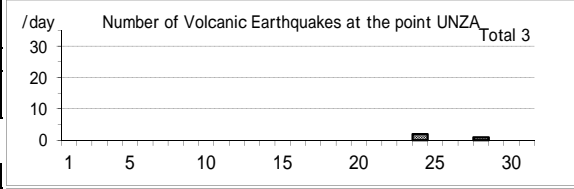
噴煙の色(Color of plumes)	W
他の火山現象(Other volcanic phenomena)	-

Note: Plumes were from the 10th Lava Dome(Location A10) and/or the 11th Lava Dome(A11).

Note: Uncolored:Plume color was White(W).

Colored:Plume color was Light white(LW), Grayish white(GW), Gray(G) and other.

Unzendake: December,2009



(19)霧島山

新燃岳 (Shinmoedake)

震動観測(Seismic Observation)

Observation Point: KIRA	月計	最大(起日)
	total	max (date)
火山性地震回数(Number of volcanic earthquakes)	46	9 (20)
火山性微動回数(Number of volcanic tremors)	0	0
微動継続時間(Duration of volcanic tremors) (min)	-	-

Note: KIRA (N31°54.0' E130°52.3' H1,035m)

遠望観測(Visual Observation)

Observation Point: KIRA	最大(起日)
	max (date)
噴煙量(Quantity of plumes) (JMA's scale)	1 (abbr.)
噴煙の高さ(Height of plumes) (m)	300 (8)

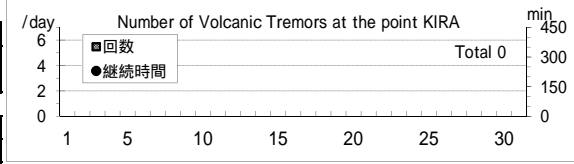
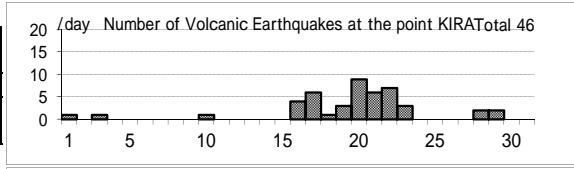
噴煙の色(Color of plumes)	W
他の火山現象(Other volcanic phenomena)	-

Note: Plumes were from the Shinmoedake Crater

Note: Uncolored:Plume color was White(W).

Colored:Plume color was Light white(LW), Grayish white(GW), Gray(G) and other.

Kirishimayama: December,2009



御鉢(Ohachi)

震動観測(Seismic Observation)

Observation Point: KTCM	月計	最大(起日)
	total	max (date)
火山性地震回数(Number of volcanic earthquakes)	1	1 (8)
火山性微動回数(Number of volcanic tremors)	0	0
微動継続時間(Duration of volcanic tremors) (min)	-	-

Note: KTCM (N31°53.2' E130°55.2' H1,549m)

遠望観測(Visual Observation)

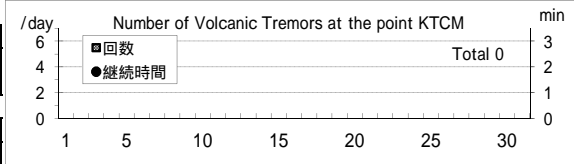
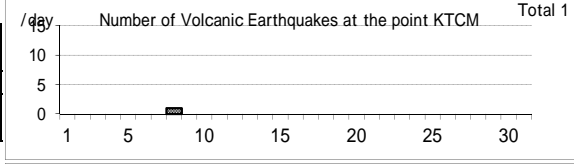
Observation Point: KTCM	最大(起日)
	max (date)
噴煙量(Quantity of plumes) (JMA's scale)	-
噴煙の高さ(Height of plumes) (m)	-

噴煙の色(Color of plumes)	-
他の火山現象(Other volcanic phenomena)	-

Note: Plumes were from the Ohachi Crater

Note: Uncolored:Plume color was White(W).

Colored:Plume color was Light white(LW), Grayish white(GW), Gray(G) and other.



(20)桜島

震動観測(Seismic Observation)

Observation Point: SKRB	月計 total	最大(起日) max (date)
火山性地震回数(Number of volcanic earthquakes)	602	38 (2)
火山性微動回数(Number of volcanic tremors)	648	58 (19)
微動継続時間(Duration of volcanic tremors) (min)	2686	274 (12)

Note: SKRB (N31°35.6' E130°38.4' H455m)

遠望観測(Visual Observation)

	月計 total	最大(起日) max (date)
爆発回数(Number of explosive eruptions)	117	11 (29)
降灰量(Amount of ash fall) (g/m ²)	23	7 (2)

A,B火口 (A,B crater)	最大(起日) max (date)
噴煙量(Quantity of plumes) (JMA's scale)	2 (8)
噴煙の高さ(Height of plumes) (m)	500 (8)

昭和火口 (Showa crater)	最大(起日) max (date)
噴煙量(Quantity of plumes) (JMA's scale)	3 (abbr.)
噴煙の高さ(Height of plumes) (m)	1800 (7.24)

噴煙の色(Color of plumes)	W,LW,GW
他の火山現象(Other volcanic phenomena)	Gl,As,Bm

Note: Plumes were from Mt. Minamidake A Crater(A), B Crater(B) and Showa Crater(S)

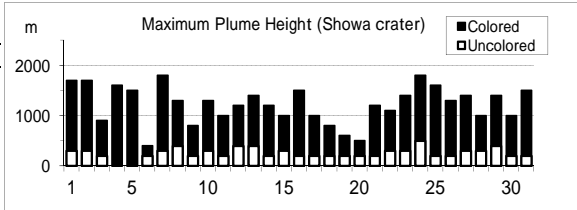
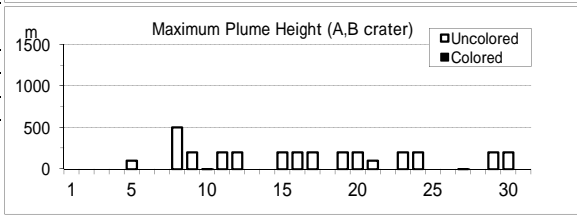
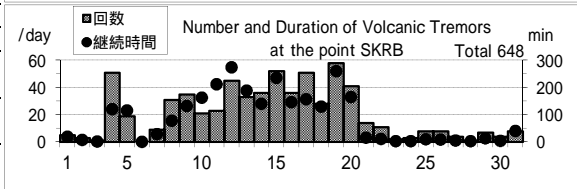
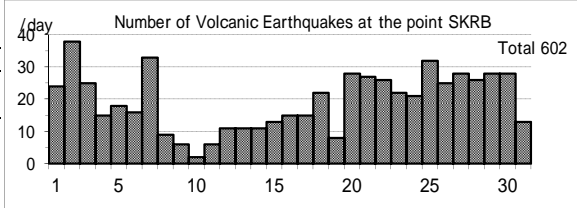
Note: Uncolored:Plume color was White(W).

Colored:Plume color was Light white(LW), Grayish white(GW), Gray(G) and other.

爆発時の遠望観測(Visual observation of explosion)

Date	Time	Col	Q	H(*100m)	Dir	Loc	Remarks
1201	1102	GW	2	6	SE	S	Bm(6合目),AS 5.1(O),37.1(D)
1201	1115	GW	3	17	SE	S	Bm(5合目),AS 11.8(O),97.0(D)
1201	2008	X	2	8	SW	S	Bm(5合目),AS 5.7(O),26.4(D)
1201	2019	X	3	10	SW	S	Bm(5合目),AS 7.6(O),28.7(D)
1202	0742	GW	3	10	W	S	Bm(5合目),AS 8.1(O),25.8(D)
1202	0840	GW	3	10	T	S	Bm(5合目),AS 5.5(O),19.2(D)
1202	1355	GW	3	17	T	S	Bm(5合目),AS 9.4(O),44.3(D)
1202	2050	X	3	12	NE	S	Bm(5合目),AS 16.8(O),79.4(D)
1202	2109	X	3	12	NE	S	Bm(5合目),AS 7.8(O),33.0(D)
1202	2314	X	3	15	NE	S	Bm(4合目),AS 9.8(O),50.2(D)
1203	0803	GW	2	8	SE	S	Bm(7合目),AS 2.7(O),28.4(D)
1203	0812	GW	2	7	SE	S	Bm(5合目),AS 2.8(O),26.9(D)
1203	0823	GW	2	7	SE	S	Bm(5合目),AS 10.1(D),1.9(A)
1203	0841	GW	2	8	SE	S	Bm(4合目),AS 4.8(O),55.3(D)
1203	0916	GW	2	7	SE	S	Bm(4合目),AS 1.9(O),15.9(D)
1203	1201	GW	X	>5	SE	S	Bm(4合目),AS 8.3(O),79.8(D)
1204	0310	X	2	4	S	S	Bm(6合目),AS 3.2(O),12.3(D)
1204	0349	X	2	5	S	S	Bm(5合目),AS 15.8(O),41.5(D)
1204	0406	X	2	4	S	S	Bm(4合目),AS 7.1(O),22.8(D)
1204	0411	X	2	5	S	S	Bm(4合目),AS 3.2(O),20.1(D)
1204	0829	GW	3	10	SW	S	Bm(5合目),AS 4.9(O),17.0(D)
1204	2050	GW	3	12	T	S	Bm(4合目),AS 15.6(O),63.7(D)
1206	1031	GW	2	40	SE	S	Bm(5合目),AS 4.6(O),40.6(D)
1207	0714	GW	3	10	SE	S	Bm(4合目),AS 14.0(O),84.4(D)
1207	1251	GW	3	14	SE	S	Bm(4合目),AS 20.8(O),109.4(D)
1207	1346	GW	3	12	SE	S	Bm(4合目),AS 12.1(O),61.1(D)
1207	1453	GW	3	18	SE	S	Bm(4合目),AS 7.6(O),35.8(D)
1208	0248	GW	3	12	NE	S	Bm(5合目),AS 3.0(O),15.2(D)
1208	2218	X	X	>7	T	S	Bm(5合目),AS 4.1(O),20.0(D)
1209	2205	X	2	8	NE	S	Bm(6合目),AS 2.6(O),18.9(D)
1212	1150	GW	3	12	SE	S	Bm(5合目),AS 5.1(D),1(A)
1213	0237	X	3	14	SE	S	Bm(4合目),AS 3.6(O),15.4(D)
1213	1007	GW	3	12	SE	S	Bm(5合目),AS 1.6(O),21.1(D)
1213	2122	X	3	10	SE	S	Bm(6合目),AS 2.4(O),18.9(D)
1213	2358	X	3	10	SE	S	Bm(5合目),AS 2.4(O),23.3(D)
1220	0135	X	2	5	SE	S	Bm(6合目),AS 1.2(O),10.6(D)
1220	0706	GW	2	5	SE	S	Bm(6合目),AS 1.2(O),10.9(D)
1220	0752	GW	X	>2	SE	S	Bm(6合目),AS 1.2(O),10.2(D)
1221	0210	X	2	7	SE	S	Bm(4合目),AS 5.8(O),58.8(D)
1221	1204	GW	2	5	SE	S	Bm(7合目),AS 4.4(O),27.1(D)
1221	1335	GW	3	10	SE	S	Bm(6合目),AS 15.5(D),4.6(A)
1221	1623	GW	3	10	SE	S	Bm(6合目),AS 12.8(D),2.8(A)
1221	1705	GW	3	10	SE	S	Bm(6合目),AS 2.2(O),16.4(D)
1221	2023	X	3	12	S	S	Bm(5合目),AS 7.1(O),40.5(D)
1222	0308	X	2	5	SE	S	Bm(5合目),AS 1.4(O),14.4(D)
1222	0906	GW	2	7	SE	S	Bm(6合目),AS 9.7(O),78.8(D)
1222	1055	GW	2	8	E	S	Bm(6合目),AS 11.2(O),81.4(D)
1222	1931	X	3	11	E	S	Bm(4合目),AS 11.2(O),84.4(D)
1222	2051	X	3	11	E	S	Bm(5合目),AS 8.6(O),74.6(D)
1222	2336	X	2	9	E	S	Bm(6合目),AS 1.6(O),74.6(D)
1223	0401	X	3	10	E	S	Bm(3合目),AS 2.5(O),39.6(D)
1223	0515	X	3	10	E	S	Bm(3合目),AS 10.0(O),127.2(D)
1223	0914	GW	3	8	E	S	Bm(4合目),AS 3.8(O),66.0(D)
1223	0951	GW	3	12	E	S	Bm(5合目),AS 3.4(O),55.0(D)

Sakurajima: December,2009



1223	1048	GW	3	12	E S	Bm(6合目),AS 2.8(O),40.1(D)
1223	1450	GW	>2	>5	E S	Bm(7合目),AS 4.0(O),27.4(D)
1223	1840	X	X	X	X S	Bm(4合目),AS 2.9(O),38.1(D)
1223	1930	X	3	10	E S	Bm(5合目),AS 2.9(O),17.9(D)
1223	2032	X	3	14	SE S	Bm(5合目),AS 7.6(O),77.1(D)
1223	2243	X	3	14	SE S	Bm(5合目),AS 4.3(O),31.9(D)
1224	0027	X	3	12	E S	Bm(4合目),AS 8.5(O),69.8(D)
1224	0218	X	3	12	E S	Bm(6合目),AS 3.7(O),34.3(D)
1224	1149	GW	>2	>4	E S	Bm(4合目),AS 9.9(O),66.8(D)
1224	1356	GW	3	14	E S	Bm(4合目),AS 6.1(O),40.3(D)
1224	1543	GW	3	15	E S	Bm(4合目),AS 10.8(O),73.4(D)
1224	1720	GW	3	18	E S	AS 4.8(O),29.4(D)
1225	0050	X	3	15	E S	Bm(4合目),AS 12.3(O),75.8(D)
1225	0506	X	3	16	E S	Bm(4合目),AS 9.1(O),69.5(D)
1225	0734	X	X	X	X S	Bm(5合目),AS 6.3(O),52.4(D)
1225	1002	X	X	X	X S	Bm(6合目),AS 2.1(O),14.7(D)
1225	1250	GW	>2	>8	T S	Bm(4合目),AS 14.7(O),88.2(D)
1225	1500	X	X	X	X S	Bm(4合目),AS 8.2(O),91.6(D)
1225	1621	X	X	X	X S	Bm(4合目),AS 7.7(O),92.2(D)
1225	1952	X	X	X	X S	AS 1.8(O),13.4(D)
1226	0039	X	2	6	SE S	Bm(4合目),AS 3.0(O),39.8(D)
1226	0308	X	X	X	X S	Bm(4合目),AS 3.0(O),32.9(D)
1226	0732	GW	3	10	SE S	Bm(4合目),AS 10.0(O),84.1(D)
1226	1013	GW	3	10	SE S	Bm(5合目),AS 15.7(D),3.4(A)
1226	1631	GW	3	10	S S	Bm(6合目),AS 11.6(O),48.7(D)
1226	2328	X	3	13	SE S	Bm(4合目),AS 14.4(O),56.4(D)
1227	0055	X	3	11	E S	Bm(6合目),AS 5.0(O),23.1(D)
1227	0455	X	3	11	E S	Bm(4合目),AS 3.4(O),14.8(D)
1227	0842	GW	3	10	E S	Bm(6合目),AS 12.1(D),6.2(A)
1227	1058	GW	3	10	E S	Bm(5合目),AS 11.0(O),69.3(D)
1227	1135	GW	>2	>3	E S	Bm(4合目),AS 18.0(O),126.6(D)
1227	2141	GW	3	14	E S	Bm(4合目),AS 6.2(O),63.3(D)
1228	0336	X	X	X	X S	Bm(4合目),AS 1.1(O),12.2(D)
1228	0519	X	X	X	X S	Bm(5合目),AS 3.9(O),39.9(D)
1228	0637	X	2	8	S S	Bm(5合目),AS 1.4(O),19.1(D)
1228	0813	GW	2	5	SE S	Bm(5合目),AS 4.0(O),48.5(D)
1228	1028	GW	3	9	SE S	Bm(4合目),AS 32.6(D),5(E)
1228	1620	GW	3	9	SE S	Bm(5合目),AS 11.6(D),2.1(A)
1228	1743	GW	3	10	SE S	Bm(4合目),AS 9.8(O),80.6(D)
1228	2051	X	3	10	SE S	Bm(4合目),AS 6.5(O),104.6(D)
1228	2215	X	3	10	SE S	Bm(5合目),AS 3.9(O),50.3(D)
1228	2353	X	3	10	E S	Bm(4合目),AS 6.2(O),64.6(D)
1229	0256	X	3	10	E S	Bm(4合目),AS 9.7(O),80.7(D)
1229	0432	X	3	10	E S	Bm(5合目),AS 3.3(O),42.5(D)
1229	0518	X	3	10	E S	Bm(5合目),AS 8.1(O),78.7(D)
1229	0709	GW	3	10	E S	Bm(4合目),AS 10.3(O),94.7(D)
1229	1020	GW	3	10	E S	Bm(5合目),AS 6.2(O),54.7(D)
1229	1159	GW	3	14	E S	Bm(4合目),AS 12.2(O),87.9(D)
1229	1343	GW	2	7	E S	Bm(6合目),AS 3.5(O),26.7(D)
1229	1552	GW	2	8	E S	Bm(5合目),AS 11.5(O),96.5(D)
1229	2051	X	3	12	E S	Bm(5合目),AS 6.5(O),46.5(D)
1229	2334	X	2	6	E S	Bm(6合目),AS 2.0(O),19.3(D)
1229	2339	X	3	12	E S	Bm(4合目),AS 5.5(O),52.7(D)
1230	0248	X	3	10	NE S	Bm(4合目),AS 4.9(O),61.2(D)
1230	0536	X	2	7	NE S	Bm(4合目),AS 11.9(O),116.1(D)
1230	0718	GW	2	8	NE S	Bm(4合目),AS 7.6(O),88.7(D)
1230	1449	X	X	X	X S	Bm(4合目),AS 3.1(O),32.2(D)
1230	1820	X	X	X	X S	Bm(4合目),AS 3.7(O),48.2(D)
1230	2217	X	X	X	X S	Bm(4合目),AS 7.5(O),87.6(D)
1231	0611	X	X	X	X S	AS 12.4(D),1.5(A)
1231	0951	X	X	X	X S	AS 10.3(D),1.2(A)
1231	1118	X	3	15	SE S	Bm(4合目),AS 2.2 (O),29.3(D)
1231	1757	X	>3	>10	SE S	Bm(5合目),AS 55.2(D),7.2(A)

臨時観測 平成21年(2009年)12月 Extra Observation in December,2009

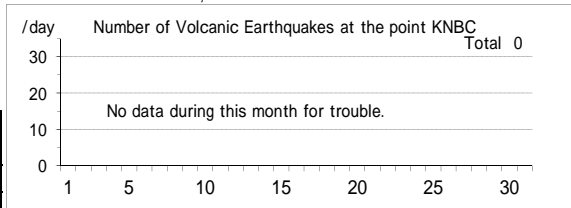
(1)倶多楽

札幌火山監視・情報センターによる火山機動観測
Mobile observation by the Sapporo VOIC
Date: Since 15 Jul.,2004

震動観測(Seismic Observation)	月計 total	最大(起日) max (date)
Observation Point: KNBC		
火山性地震回数(Number of volcanic earthquakes)	0	0
火山性微動回数(Number of volcanic tremors)	0	0
微動継続時間(Duration of volcanic tremors) (min.)	-	-

Note:KNBC (N42°30.1' E141°7.4' H570m)

Kuttara: December,2009



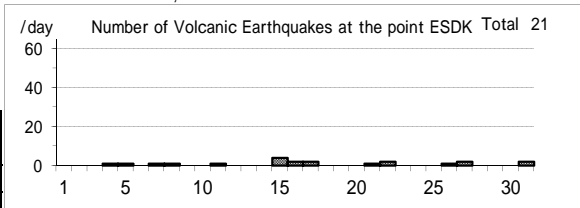
(2)恵山

札幌火山監視・情報センターによる火山機動観測
Mobile observation by the Sapporo VOIC
Date: Since 24 Jul.,2005

震動観測(Seismic Observation)	月計 total	最大(起日) max (date)
Observation Point: ESDK		
火山性地震回数(Number of volcanic earthquakes)	21	4 (15)
火山性微動回数(Number of volcanic tremors)	0	0
微動継続時間(Duration of volcanic tremors) (min.)	-	-

Note: ESDK (N41°48.7' E141°9.7' H369m)

Esan: December,2009



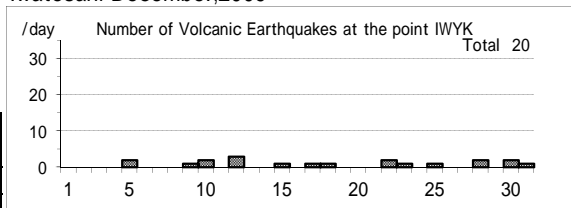
(3)岩手山

仙台火山監視・情報センターによる火山機動観測
Mobile observation by the Sendai VOIC
Date: Since 4 Oct.,1995

震動観測(Seismic Observation)	月計 total	最大(起日) max (date)
Observation Point: IWYK		
火山性地震回数(Number of volcanic earthquakes)	20	3 (12)
火山性微動回数(Number of volcanic tremors)	0	0
微動継続時間(Duration of volcanic tremors) (min.)	-	-

Note:IWYK (N39°52.7' E140°57.6' H763m)

Iwatesan: December,2009



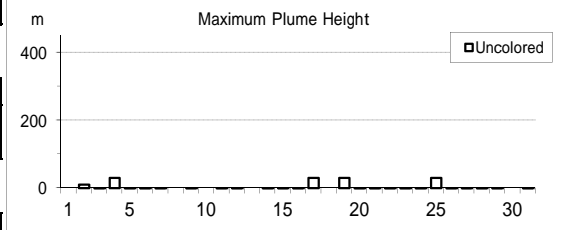
遠望観測(Visual Observation)	最大(起日) max (date)
噴煙量(Quantity of plumes) (JMA's scale)	1 (abbr.)
噴煙の高さ(Height of plumes) (m)	30 (abbr.)

噴煙の色(Color of plumes)	W
他の火山現象(Other volcanic phenomena)	-

Note: Plumes were from the Kurokurayama Summit(LocationX), the Ojigokudani(Y-6)

Note: Uncolored:Plume color was White(W), Light white(LW).

Colored:Plume color was Grayish white(GW), Gray(G) and other.



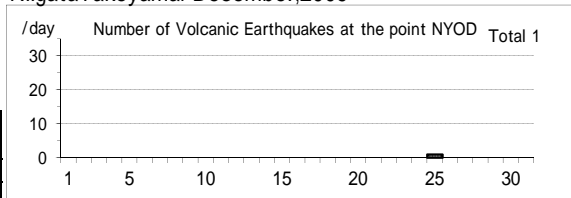
(4)新潟焼山

気象庁本庁による火山機動観測
Mobile observation by the headquarter of JMA
Date: Since 1 Dec.,2005

震動観測(Seismic Observation)	月計 total	最大(起日) max (date)
Observation Point: NYOD		
火山性地震回数(Number of volcanic earthquakes)	1	1 (25)
火山性微動回数(Number of volcanic tremors)	0	0
微動継続時間(Duration of volcanic tremors) (min.)	-	-

Note: NYOD (N36°57.4' E138°2.3' H1,150m)

NiigataYakeyama: December,2009



(5)白山

気象庁本庁による火山機動観測

Mobile observation by the headquarter of JMA

Date: Since 1 Dec.,2005

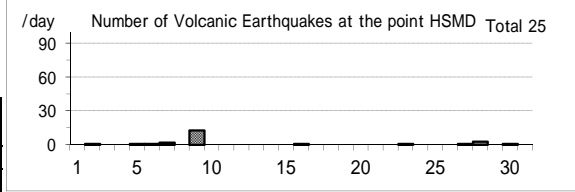
震動観測(Seismic Observation)

Observation Point: HSMD

	月計 total	最大(起日) max (date)
火山性地震回数(Number of volcanic earthquakes)	25	13 (9)
火山性微動回数(Number of volcanic tremors)	0	0
微動継続時間(Duration of volcanic tremors) (min.)	-	-

Note: HSMD (N36°8.8' E136°45.9' H2,345m)

Hakusan: December,2009



(6)富士山

気象庁本庁による火山機動観測

Mobile observation by the headquarter of JMA

Date: Since 18 Oct.,1987

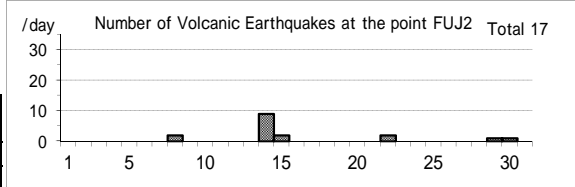
震動観測(Seismic Observation)

Observation Point: FUJ2

	月計 total	最大(起日) max (date)
火山性地震回数(Number of volcanic earthquakes)	17	9 (14)
火山性微動回数(Number of volcanic tremors)	0	0
微動継続時間(Duration of volcanic tremors) (min.)	-	-

Note: FUJ2 (N35°21.6' E138°43.6' H3,772m)

Fujisan: December,2009



(7)桜島

地磁気観測所鹿屋出張所による桜島の日降灰量観測

Extra observation of daily amounts of ash fall from Sakurajima by the Kanoya Satellite Observatory, the Magnetic Observatory, JMA

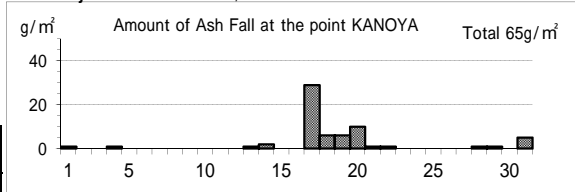
Date: daily (a.m. 0900)

遠望観測(Visual Observation)

Observation Point: KANOYA

	月計 total	最大(起日) max (date)
降灰量(Amount of ash fall) (g/m ²)	65	29 (17)

Sakurajima: December,2009



(8)薩摩硫黄島

福岡火山監視・情報センター、鹿児島地方気象台による火山機動観測

Mobile observation by the Fukuoka VOIC and Kagoshima LMO

Date: Since 10 Sep.,1997

震動観測(Seismic Observation)

Observation Point: ST11

	月計 total	最大(起日) max (date)
火山性地震回数(Number of volcanic earthquakes)	2979	121 (2,9)
火山性微動回数(Number of volcanic tremors)	0	0
微動継続時間(Duration of volcanic tremors) (min.)	0	0

Note: ST11 (N30°47.3' E130°18.1' H380m)

遠望観測(Visual Observation)

最大(起日) max (date)

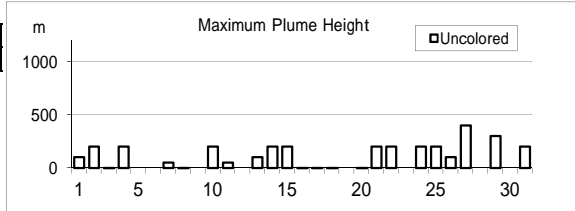
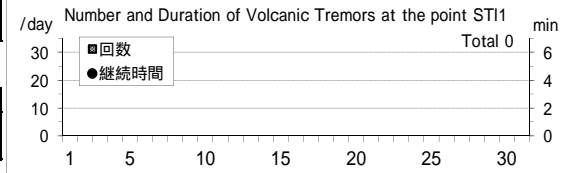
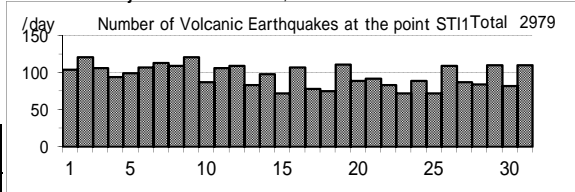
噴煙量(Quantity of plumes) (JMA's scale)	2 (27,29)
噴煙の高さ(Height of plumes) (m)	400 (27)

噴煙の色(Color of plumes)	W
他の火山現象(Other volcanic phenomena)	-

Note: Uncolored:Plume color was White(W), Light white(LW).

Colored:Plume color was Grayish white(GW), Gray(G) and other.

Satsuma-Iojima: December,2009



(9)口永良部島

福岡火山監視・情報センター、鹿児島地方気象台による火山機動観測
 Mobile observation by the Fukuoka VOIC and Kagoshima LMO
 Date: Since 11 Sep.,1999 (seismic), 10 Mar.,2004 (Visual)

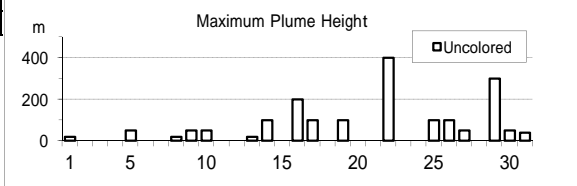
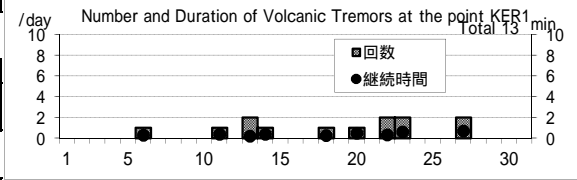
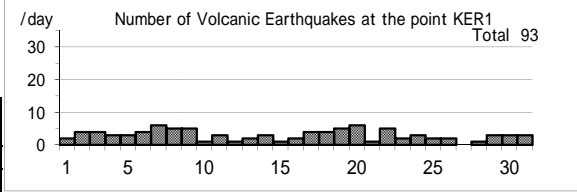
震動観測(Seismic Observation)	月計 total	最大(起日) max (date)
Observation Point: KER1		
火山性地震回数(Number of volcanic earthquakes)	93	6 (7,20)
火山性微動回数(Number of volcanic tremors)	13	2 (abbr.)
微動継続時間(Duration of volcanic tremors) (min.)	4	1 (27)

遠望観測(Visual Observation)	最大(起日) max (date)
噴煙量(Quantity of plumes) (JMA's scale)	1 (abbr.)
噴煙の高さ(Height of plumes) (m)	400 (22)

噴煙の色(Color of plumes)	W
他の火山現象(Other volcanic phenomena)	-

Note: Uncolored:Plume color was White(W), Light white(LW).
 Colored:Plume color was Grayish white(GW), Gray(G) and other.

Kuchinoerabujima: December,2009



(10)諏訪之瀬島

福岡火山監視・情報センター、鹿児島地方気象台による火山機動観測
 Mobile observation by the Fukuoka VOIC and Kagoshima LMO
 Date: Since 6 Jul.,2001

震動観測(Seismic Observation)	月計 total	最大(起日) max (date)
Observation Point: SWA1		
火山性地震回数(Number of volcanic earthquakes)	265	38 (28)
火山性微動回数(Number of volcanic tremors)	311	39 (14)
微動継続時間(Duration of volcanic tremors) (min.)	1895	213 (14)

Note: SWA1 (N29 37.7' E129 42.3' H450m)
 * Continuous volcanic tremors occurred intermittently in this month.
 Number of volcanic tremors and duration are not including the continuous volcanic tremor.

遠望観測(Visual Observation)	月計 total	最大(起日) max (date)
爆発回数(Number of explosive eruptions)	20	3 (18,30)

	最大(起日) max (date)
噴煙量(Quantity of plumes) (JMA's scale)	2 (14,15,22)
噴煙の高さ(Height of plumes) (m)	600 (15,22)

噴煙の色(Color of plumes)	W,GW
他の火山現象(Other volcanic phenomena)	-

Note: Uncolored:Plume color was White(W), Light white(LW).
 Colored:Plume color was Grayish white(GW), Gray(G) and other.

Suwanosejima: December,2009

