

# 火山観測 Summary of Observations on Volcanoes

## 常時観測 平成21年(2009年)11月

### Constant Observation in November,2009

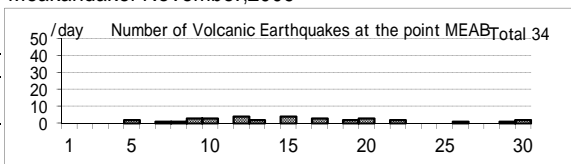
#### (1) 雌阿寒岳

震動観測(Seismic Observation)

	月計 total	最大(起日) max (date)
Observation Point: MEAB		
火山性地震回数(Number of volcanic earthquakes)	34	4 (12,15)
火山性微動回数(Number of volcanic tremors)	0	0
微動継続時間(Duration of volcanic tremors) (min.)	6	5 (18)

Note: MEAB (N43 22.8' E143 58.7' H680m)

#### Meakandake: November,2009



遠望観測(Visual Observation)

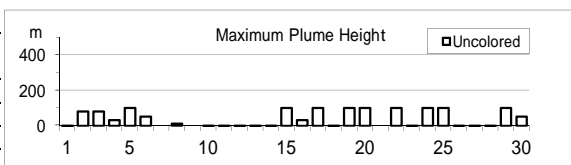
	最大(起日) max (date)
噴煙量(Quantity of plumes) (JMA's scale)	1 (abbr.)
噴煙の高さ(Height of plumes) (m)	100 (abbr.)

噴煙の色(Color of plumes)	W
他の火山現象(Other volcanic phenomena)	-

Note: Plumes were from the Pommachineshiri Summit Crater(Location T), the Nakamachineshiri Crater(U), the Akanuma Crater(M) and/or Pommachineshiri NW Fumaroles(N).

Note: Uncolored:Plume color was White(W).

Colored:Plume color was Light white(LW), Grayish white(GW), Gray(G) and other.



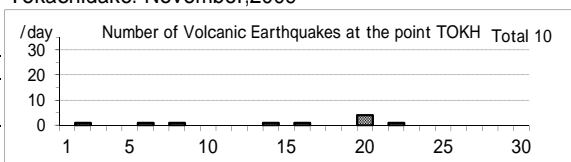
#### (2) 十勝岳

震動観測(Seismic Observation)

	月計 total	最大(起日) max (date)
Observation Point: TOKH		
火山性地震回数(Number of volcanic earthquakes)	10	4 (20)
火山性微動回数(Number of volcanic tremors)	0	0
微動継続時間(Duration of volcanic tremors) (min.)	-	-

Note: TOKH (N43 26.0' E142 40.2' H1,355m)

#### Tokachidake: November,2009



遠望観測(Visual Observation)

	最大(起日) max (date)
噴煙量(Quantity of plumes) (JMA's scale)	1 (abbr.)
噴煙の高さ(Height of plumes) (m)	100 (abbr.)

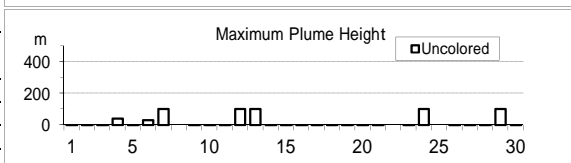
噴煙の色(Color of plumes)	W
他の火山現象(Other volcanic phenomena)	-

Note: Plumes were from the Taisho Crater(Location X),

the 62 crater Area(P,Q,Y), the Furikozawa Fumaroles (F) and/or the Kyufun Crater (Z).

Note: Uncolored:Plume color was White(W).

Colored:Plume color was Light white(LW), Grayish white(GW), Gray(G) and other.



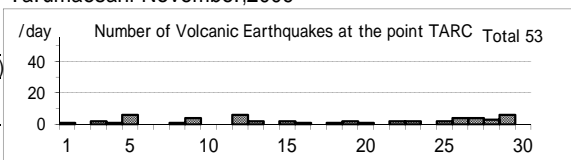
#### (3) 樽前山

震動観測(Seismic Observation)

	月計 total	最大(起日) max (date)
Observation Point: TARC		
火山性地震回数(Number of volcanic earthquakes)	53	6 (5,12,29)
火山性微動回数(Number of volcanic tremors)	0	0
微動継続時間(Duration of volcanic tremors) (min.)	-	-

Note: TARC (N42 42.2' E141 22.6' H638m)

#### Tarumaesan: November,2009



遠望観測(Visual Observation)

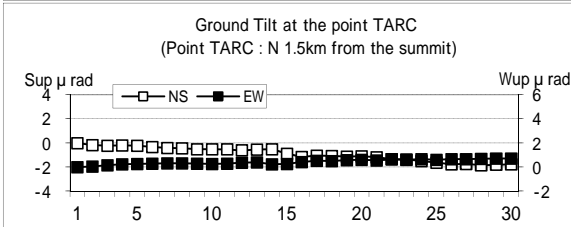
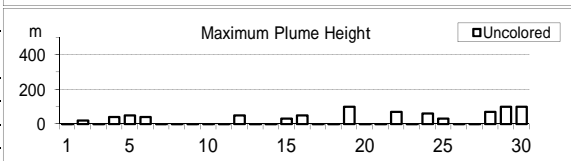
	最大(起日) max (date)
噴煙量(Quantity of plumes) (JMA's scale)	1 (abbr.)
噴煙の高さ(Height of plumes) (m)	100 (19,29,30)

噴煙の色(Color of plumes)	W
他の火山現象(Other volcanic phenomena)	-

Note: Plumes were from the Summit Area(Location A, B and/or E).

Note: Uncolored:Plume color was White(W).

Colored:Plume color was Light white(LW), Grayish white(GW), Gray(G) and other.



(4)有珠山

震動観測(Seismic Observation)	月計 total	最大(起日) max (date)
Observation Point: USUA		
火山性地震回数(Number of volcanic earthquakes)	22	2 (abbr.)
火山性微動回数(Number of volcanic tremors)	0	0
微動継続時間(Duration of volcanic tremors) (min.)	-	-

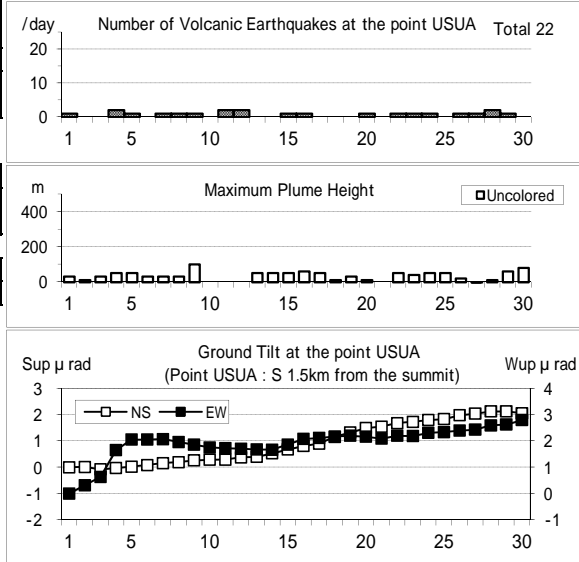
Note: USUA (N42°31.7' E140°50.2' H246m)

遠望観測(Visual Observation)	最大(起日) max (date)
噴煙量(Quantity of plumes) (JMA's scale)	1 (abbr.)
噴煙の高さ(Height of plumes) (m)	100 (9)
噴煙の色(Color of plumes)	W
他の火山現象(Other volcanic phenomena)	-

Note: Plumes were from the Summit Area of Usuzan(Location P) , Mt.showa-shinazan(Z), Nishi-yama vent group(N) and Konpira-yama vent group(K).

Note: Uncolored:Plume color was White(W).  
Colored:Plume color was Light white(LW), Grayish white(GW), Gray(G) and other.

Usuzan: November,2009



(5)北海道駒ヶ岳

震動観測(Seismic Observation)	月計 total	最大(起日) max (date)
Observation Point: KOMA		
火山性地震回数(Number of volcanic earthquakes)	0	0
火山性微動回数(Number of volcanic tremors)	0	0
微動継続時間(Duration of volcanic tremors) (min.)	-	-

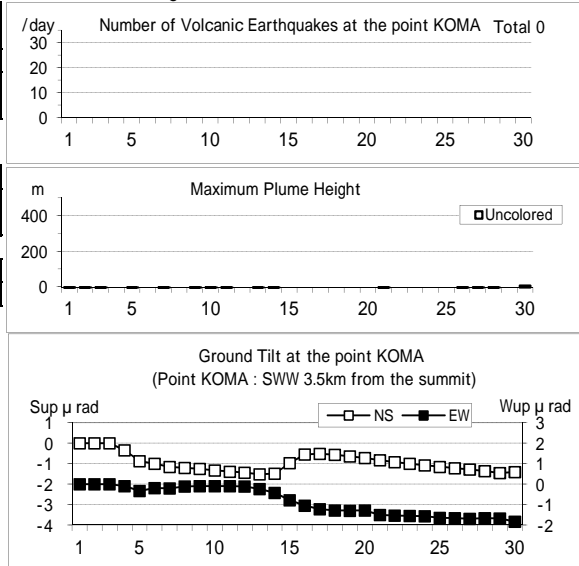
Note: KOMA (N42°03.2' E140°38.3' H265m)

遠望観測(Visual Observation)	最大(起日) max (date)
噴煙量(Quantity of plumes) (JMA's scale)	1 (30)
噴煙の高さ(Height of plumes) (m)	10 (30)
噴煙の色(Color of plumes)	W
他の火山現象(Other volcanic phenomena)	-

Note: Plumes were from the Showa-4 Crater(Location D1) and/or the 96 South Crater(D2).

Note: Uncolored:Plume color was White(W).  
Colored:Plume color was Light white(LW), Grayish white(GW), Gray(G) and other.

Hokkaido-Komagatake: November,2009



(6)吾妻山

震動観測(Seismic Observation)	月計 total	最大(起日) max (date)
Observation Point: AZUA		
火山性地震回数(Number of volcanic earthquakes)	161	17 (30)
火山性微動回数(Number of volcanic tremors)	0	0
微動継続時間(Duration of volcanic tremors) (min.)	-	-

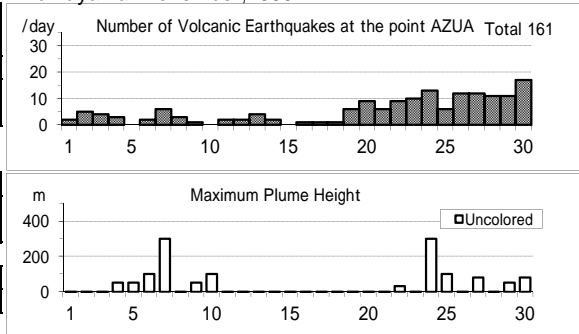
Note: AZUA (N37°43.3' E140°16.5' H1,295m)

遠望観測(Visual Observation)	最大(起日) max (date)
噴煙量(Quantity of plumes) (JMA's scale)	1 (abbr.)
噴煙の高さ(Height of plumes) (m)	300 (7,24)
噴煙の色(Color of plumes)	W
他の火山現象(Other volcanic phenomena)	-

Note: Plumes were from the Oana Crater

Note: Uncolored:Plume color was White(W).  
Colored:Plume color was Light white(LW), Grayish white(GW), Gray(G) and other.

Azumayama: November,2009



(7)安達太良山

震動観測(Seismic Observation)

Observation Point: ADTB	月計 total	最大(起日) max (date)
火山性地震回数(Number of volcanic earthquakes)	2	1 (3,13)
火山性微動回数(Number of volcanic tremors)	0	0
微動継続時間(Duration of volcanic tremors) (min.)	-	-

Note: ADTB(N37° 38.1 E140° 18.2 H1,320m)

遠望観測(Visual Observation)

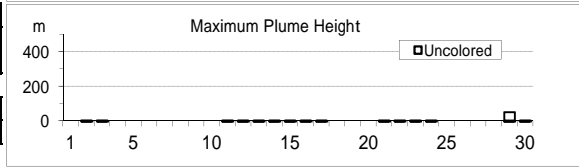
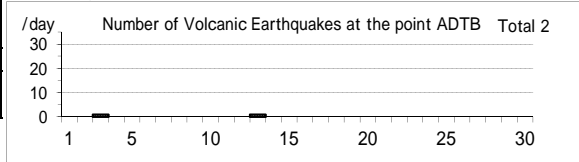
	最大(起日) max (date)
噴煙量(Quantity of plumes) (JMA's scale)	1 (29)
噴煙の高さ(Height of plumes) (m)	50 (29)
噴煙の色(Color of plumes)	W
他の火山現象(Other volcanic phenomena)	-

Note: Plumes were from the Numanodaira - SW area.

Note: Uncolored:Plume color was White(W).

Colored:Plume color was Light white(LW), Grayish white(GW), Gray(G) and other.

Adatarayama: November,2009



(8)磐梯山

震動観測(Seismic Observation)

Observation Point: BNDA	月計 total	最大(起日) max (date)
火山性地震回数(Number of volcanic earthquakes)	2	1 (11,19)
火山性微動回数(Number of volcanic tremors)	0	0
微動継続時間(Duration of volcanic tremors) (min.)	-	-

Note: BNDA (N37° 35.0 E140° 04.8 H1000m)

遠望観測(Visual Observation)

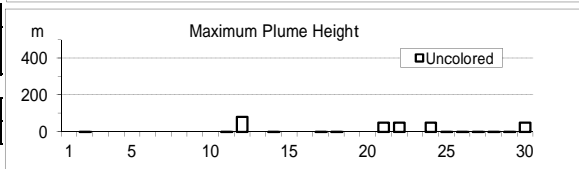
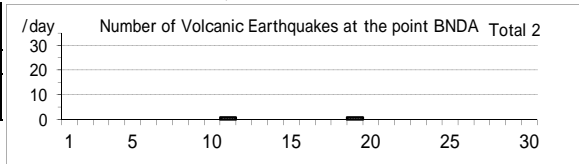
	最大(起日) max (date)
噴煙量(Quantity of plumes) (JMA's scale)	1 (abbr.)
噴煙の高さ(Height of plumes) (m)	80 (12)
噴煙の色(Color of plumes)	W
他の火山現象(Other volcanic phenomena)	-

Note: Plumes were from the Fumarolic area in Crater wall.

Note: Uncolored:Plume color was White(W).

Colored:Plume color was Light white(LW), Grayish white(GW), Gray(G) and other.

Bandaisan: November,2009



(9)那須岳

震動観測(Seismic Observation)

Observation Point: NSUA	月計 total	最大(起日) max (date)
火山性地震回数(Number of volcanic earthquakes)	5	2 (1)
火山性微動回数(Number of volcanic tremors)	0	0
微動継続時間(Duration of volcanic tremors) (min.)	-	-

Note: NSUA (N37° 06.2' E139° 59.6' H1,083m)

遠望観測(Visual Observation)

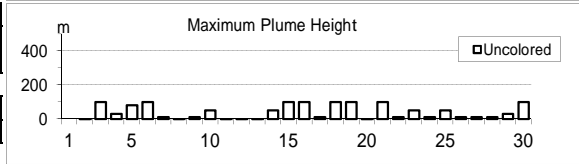
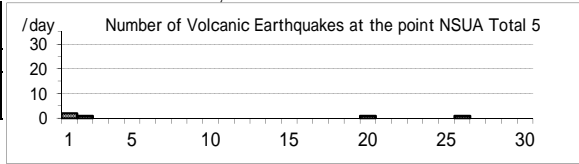
	最大(起日) max (date)
噴煙量(Quantity of plumes) (JMA's scale)	1 (abbr.)
噴煙の高さ(Height of plumes) (m)	100 (abbr.)
噴煙の色(Color of plumes)	W
他の火山現象(Other volcanic phenomena)	-

Note: Plumes were from the west flank of Mt. Nasudake.

Note: Uncolored:Plume color was White(W).

Colored:Plume color was Light white(LW), Grayish white(GW), Gray(G) and other.

Nasudake: November,2009



(10)草津白根山

震動観測(Seismic Observation)

Observation Point: KSHA	月計 total	最大(起日) max (date)
火山性地震回数(Number of volcanic earthquakes)	25	5 (6)
火山性微動回数(Number of volcanic tremors)	0	0
微動継続時間(Duration of volcanic tremors) (min.)	-	-

Note: KSHA (N36° 38.9' E138° 32.7' H1,933m)

遠望観測(Visual Observation)

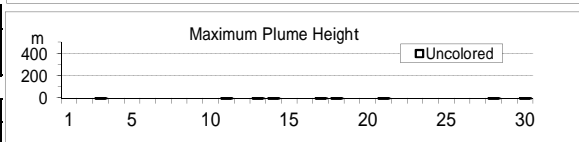
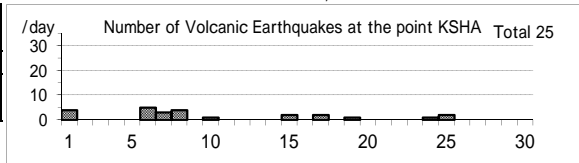
	最大(起日) max (date)
噴煙量(Quantity of plumes) (JMA's scale)	-
噴煙の高さ(Height of plumes) (m)	-
噴煙の色(Color of plumes)	-
他の火山現象(Other volcanic phenomena)	-

Note: Plumes were from the Yugama Crater and Fumaroles at northern side of Yugama Crater

Note: Uncolored:Plume color was White(W).

Colored:Plume color was Light white(LW), Grayish white(GW), Gray(G) and other.

Kusatsu-Shiranesan: November,2009



(11)浅間山

震動観測(Seismic Observation) Observation Point: ASMB	月計 total	最大(起日) max (date)
火山性地震回数(Number of volcanic earthquakes)	1311	112 (3)
火山性微動回数(Number of volcanic tremors)	0	0
微動継続時間(Duration of volcanic tremors) (min.)	-	-

Note: ASMB (N36°23.4' E138°31.1' H1,864m)

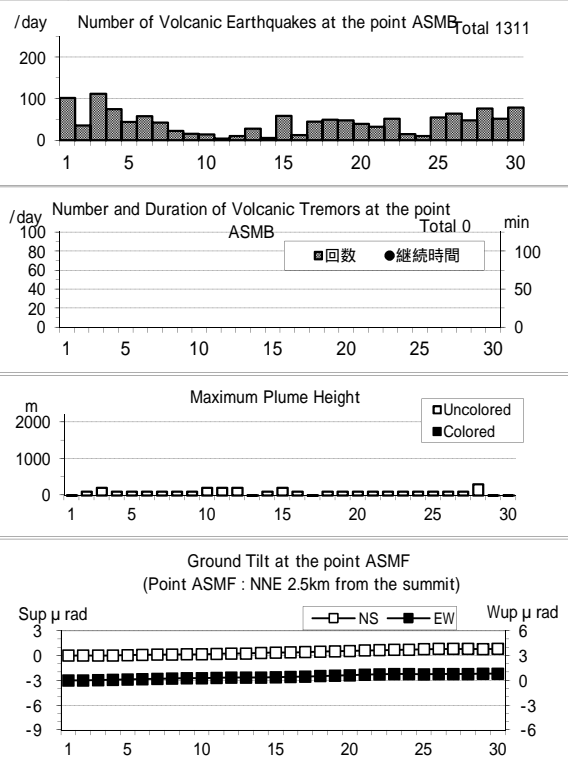
遠望観測(Visual Observation)	最大(起日) max (date)
噴煙量(Quantity of plumes) (JMA's scale)	2 (28)
噴煙の高さ(Height of plumes) (m)	300 (28)
噴煙の色(Color of plumes)	W
他の火山現象(Other volcanic phenomena)	-

Note: Plumes were from the Kamayama Crater(Location A).

Note: Uncolored:Plume color was White(W).

Colored:Plume color was Light white(LW), Grayish white(GW), Gray(G) and other.

Asamayama: November,2009



(12)御嶽山

震動観測(Seismic Observation) Observation Point: ONTA	月計 total	最大(起日) max (date)
火山性地震回数(Number of volcanic earthquakes)	2	1 (10,30)
火山性微動回数(Number of volcanic tremors)	0	0
微動継続時間(Duration of volcanic tremors) (min.)	-	-

Note: ONTA (N35°52.6' E137°29.7' H2,228m)

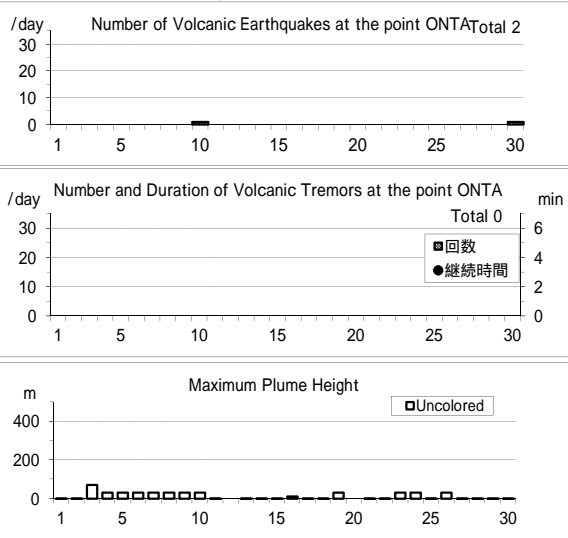
遠望観測(Visual Observation)	最大(起日) max (date)
噴煙量(Quantity of plumes) (JMA's scale)	1 (abbr.)
噴煙の高さ(Height of plumes) (m)	70 (3)
噴煙の色(Color of plumes)	W
他の火山現象(Other volcanic phenomena)	-

Note: Plumes were from the Otaki summit Crater (A) and/or S6

Note: Uncolored:Plume color was White(W).

Colored:Plume color was Light white(LW), Grayish white(GW), Gray(G) and other.

Ontakesan: November,2009



(13)伊豆東部火山群

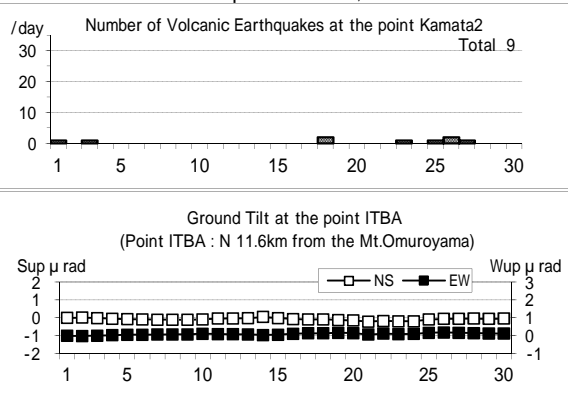
震動観測(Seismic Observation) Observation Point: ITBA,Kamata2	月計 total	最大(起日) max (date)
火山性地震回数(Number of volcanic earthquakes)	9	2 (22)
火山性微動回数(Number of volcanic tremors)	0	0
微動継続時間(Duration of volcanic tremors) (min.)	-	-

Note: ITBA (N35°00.5' E139°05.9' H12m)

Kamata2(N34°55.71' E139°03.65' H175m)

遠望観測(Visual Observation)	最大(起日) max (date)
噴煙量(Quantity of plumes) (JMA's scale)	-
噴煙の高さ(Height of plumes) (m)	-
噴煙の色(Color of plumes)	-
他の火山現象(Other volcanic phenomena)	-

Izu-Tobu Volcano Group: November,2009



(14)伊豆大島

震動観測(Seismic Observation)

Observation Point: OSMA	月計 total	最大(起日) max (date)
火山性地震回数(Number of volcanic earthquakes)	32	3 (3,8,14)
火山性微動回数(Number of volcanic tremors)	0	0
微動継続時間(Duration of volcanic tremors) (min.)	-	-

Note: OSMA (N34 44.2' E139 23.2' H553m)

遠望観測(Visual Observation)

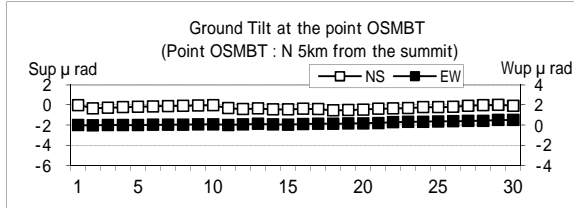
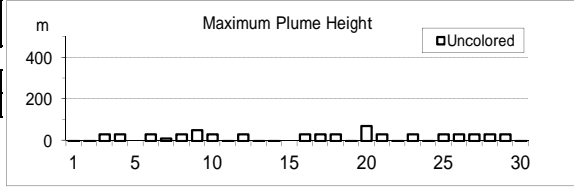
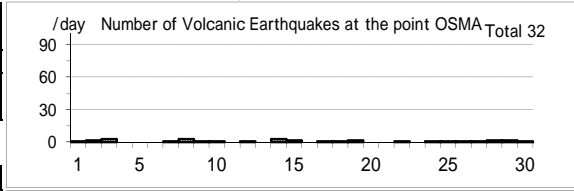
最大(起日) max (date)	
噴煙量(Quantity of plumes) (JMA's scale)	1 (abbr.)
噴煙の高さ(Height of plumes) (m)	70 (20)
噴煙の色(Color of plumes)	W
他の火山現象(Other volcanic phenomena)	-

Note:Plumes were from the Miharayama Summit Crater(Location A), the Fumaroles at western side of Miharashinzan(A1), the Fumaroles near Kengamine(A2), the Fumaroles at eastern side of Miharashinzan(A3)

Note: Uncolored:Plume color was White(W).

Colored:Plume color was Light white(LW), Grayish white(GW), Gray(G) and other.

Izu-Oshima: November,2009



(15)三宅島

震動観測(Seismic Observation)

Observation Point: MKJA	月計 total	最大(起日) max (date)
火山性地震回数(Number of volcanic earthquakes)	2307	142 (22)
火山性微動回数(Number of volcanic tremors)	0	0
微動継続時間(Duration of volcanic tremors) (min.)	-	-

Note: MKJA (N34 05.9' E139 32.0' H527m)

遠望観測(Visual Observation)

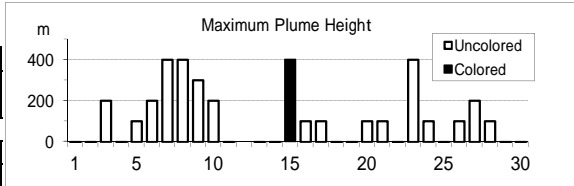
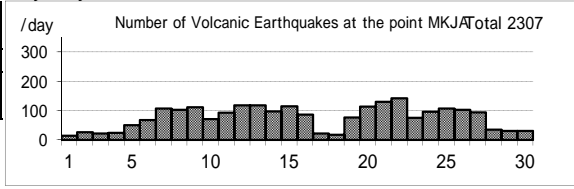
最大(起日) max (date)	
噴煙量(Quantity of plumes) (JMA's scale)	2 (abbr.)
噴煙の高さ(Height of plumes) (m)	400 (abbr.)
噴煙の色(Color of plumes)	W
他の火山現象(Other volcanic phenomena)	-

Note: Plumes were from the Summit Crater.

Note: Uncolored:Plume color was White(W).

Colored:Plume color was Light white(LW), Grayish white(GW), Gray(G) and other.

Miyakejima: November,2009



(16)九重山

震動観測(Seismic Observation)

Observation Point: KJUA	月計 total	最大(起日) max (date)
火山性地震回数(Number of volcanic earthquakes)	7	2 (6,27,28)
火山性微動回数(Number of volcanic tremors)	0	0
微動継続時間(Duration of volcanic tremors) (min.)	-	-

Note: KJUA (N33°06.2' E131°13.7' H1,280m)

遠望観測(Visual Observation)

Observation Point: KJUA	最大(起日) max (date)
噴煙量(Quantity of plumes) (JMA's scale)	1 (abbr.)
噴煙の高さ(Height of plumes) (m)	300 (3)

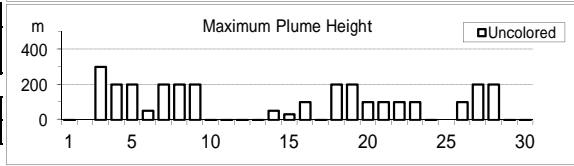
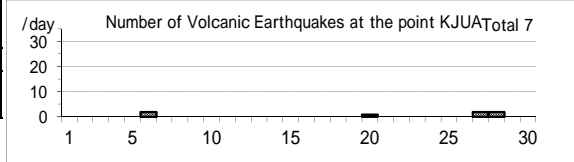
噴煙の色(Color of plumes)	W
他の火山現象(Other volcanic phenomena)	-

Note: Plumes were from the east and/or north-east flank of Mt. Hossho (Location A,B,C or D).

Note: Uncolored:Plume color was White(W).

Colored:Plume color was Light white(LW), Grayish white(GW), Gray(G) and other.

Kujusan: November,2009



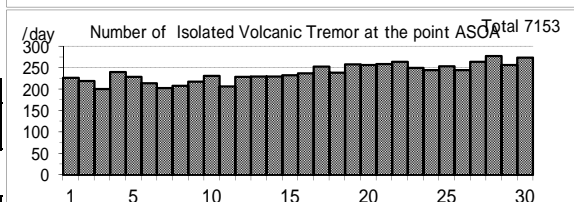
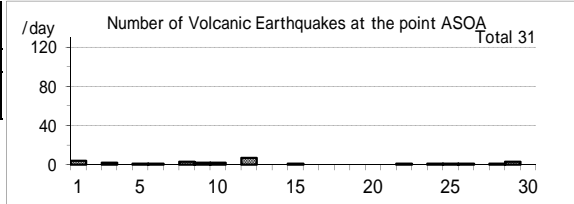
(17)阿蘇山

震動観測(Seismic Observation)

Observation Point: ASOA	月計 total	最大(起日) max (date)
火山性地震回数(Number of volcanic earthquakes)	31	7 (12)
孤立型火山性微動回数 (Number of isolated volcanic tremors)	7153	278 (28)

Note: ASOA (N32°53.1' E131°04.7' H1,163m)

Asosan: November,2009



遠望観測(Visual Observation)

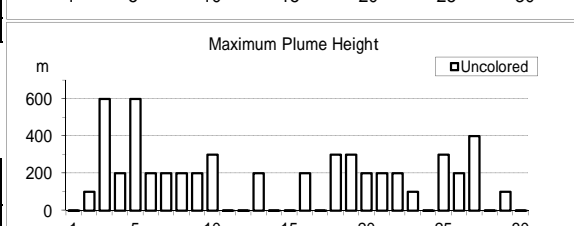
Observation Point: ASOA	最大(起日) max (date)
噴煙量(Quantity of plumes) (JMA's scale)	2 (3,5,19)
噴煙の高さ(Height of plumes) (m)	600 (3,5)

噴煙の色(Color of plumes)	W
他の火山現象(Other volcanic phenomena)	-

Note: Plumes were from the Crater No.1 of Mt. Nakadake.

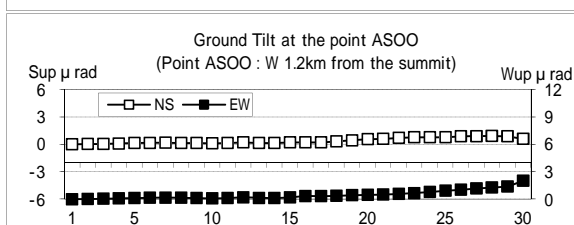
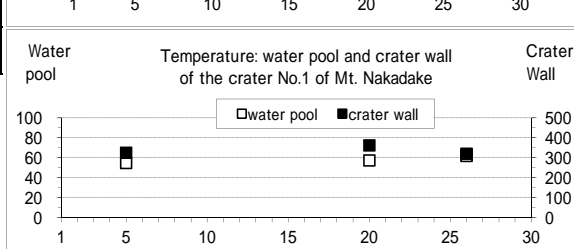
Note: Uncolored:Plume color was White(W).

Colored:Plume color was Light white(LW), Grayish white(GW), Gray(G) and other.



現地観測(Field Observation)

Observation Point: the Crater No.1 of Mt. Nakadake	最高(起日) max (date)	最低(起日) min (date)
	火口内の湯だまりの表面温度 (Surface temperature on the water pool in the crater) ( )	62 (26)
火口壁の表面温度 (Surface temperature on the crater wall) ( )	364 (20)	322 (26)



(18)雲仙岳

震動観測(Seismic Observation)

Observation Point: UNZA	月計 total	最大(起日) max (date)
火山性地震回数(Number of volcanic earthquakes)	7	3 (17)
火山性微動回数(Number of volcanic tremors)	0	0
微動継続時間(Duration of volcanic tremors) (min)	-	-

Note: UNZA (N32°44.1' E130°16.1' H769m)

遠望観測(Visual Observation)

	最大(起日) max (date)
噴煙量(Quantity of plumes) (JMA's scale)	1 (3,19)
噴煙の高さ(Height of plumes) (m)	30 (3,19)

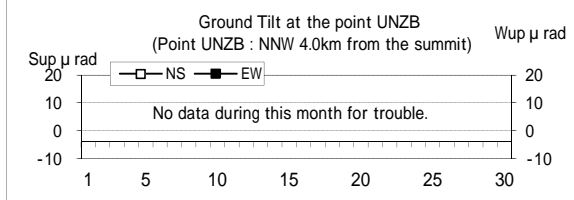
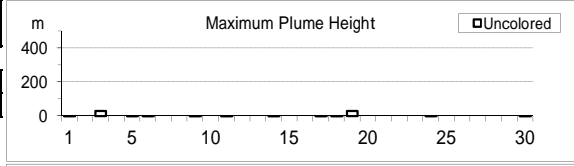
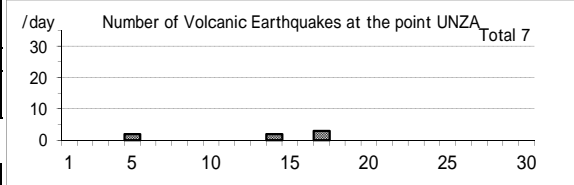
噴煙の色(Color of plumes)	W
他の火山現象(Other volcanic phenomena)	-

Note: Plumes were from the 10th Lava Dome(Location A10) and/or the 11th Lava Dome(A11).

Note: Uncolored:Plume color was White(W).

Colored:Plume color was Light white(LW), Grayish white(GW), Gray(G) and other.

Unzendake: November,2009



(19)霧島山

新燃岳 (Shinmoedake)

震動観測(Seismic Observation)

Observation Point: KIRA	月計 total	最大(起日) max (date)
火山性地震回数(Number of volcanic earthquakes)	2	1 (5,30)
火山性微動回数(Number of volcanic tremors)	0	0
微動継続時間(Duration of volcanic tremors) (min)	-	-

Note: KIRA (N31°54.0' E130°52.3' H1,035m)

遠望観測(Visual Observation)

	最大(起日) max (date)
噴煙量(Quantity of plumes) (JMA's scale)	1 (abbr.)
噴煙の高さ(Height of plumes) (m)	200 (7)

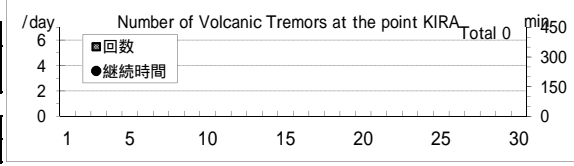
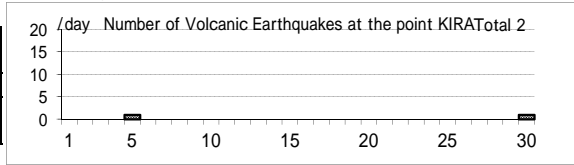
噴煙の色(Color of plumes)	W
他の火山現象(Other volcanic phenomena)	-

Note: Plumes were from the Shinmoedake Crater

Note: Uncolored:Plume color was White(W).

Colored:Plume color was Light white(LW), Grayish white(GW), Gray(G) and other.

Kirishimayama: November,2009



御鉢(Ohachi)

震動観測(Seismic Observation)

Observation Point: KTCM	月計 total	最大(起日) max (date)
火山性地震回数(Number of volcanic earthquakes)	2	1 (16,17)
火山性微動回数(Number of volcanic tremors)	0	0
微動継続時間(Duration of volcanic tremors) (min)	-	-

Note: KTCM (N31°53.2' E130°55.2' H1,549m)

遠望観測(Visual Observation)

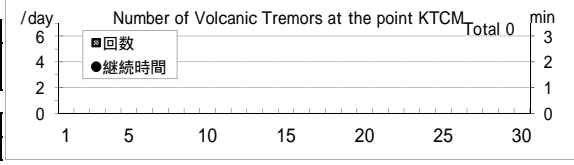
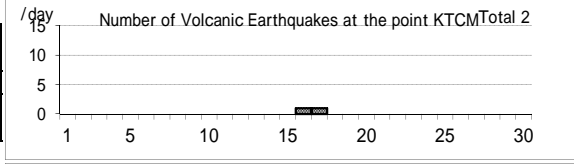
	最大(起日) max (date)
噴煙量(Quantity of plumes) (JMA's scale)	-
噴煙の高さ(Height of plumes) (m)	-

噴煙の色(Color of plumes)	-
他の火山現象(Other volcanic phenomena)	-

Note: Plumes were from the Ohachi Crater

Note: Uncolored:Plume color was White(W).

Colored:Plume color was Light white(LW), Grayish white(GW), Gray(G) and other.



(20)桜島

震動観測(Seismic Observation)

Observation Point: SKRB	月計 total	最大(起日) max (date)
火山性地震回数(Number of volcanic earthquakes)	348	26 (13)
火山性微動回数(Number of volcanic tremors)	796	80 (8)
微動継続時間(Duration of volcanic tremors) (min)	5530	876 (8)

Note: SKRB (N31°35.6' E130°38.4' H455m)

遠望観測(Visual Observation)

	月計 total	最大(起日) max (date)
爆発回数(Number of explosive eruptions)	72	12 (2)
降灰量(Amount of ash fall) (g/m <sup>2</sup> )	77	36 (13)

A,B火口 (A,B crater)	最大(起日) max (date)
噴煙量(Quantity of plumes) (JMA's scale)	1 (abbr.)
噴煙の高さ(Height of plumes) (m)	400 (6)

昭和火口 (Showa crater)	最大(起日) max (date)
噴煙量(Quantity of plumes) (JMA's scale)	3 (abbr.)
噴煙の高さ(Height of plumes) (m)	1700 (7.23)

噴煙の色(Color of plumes)	W,LW,GW
他の火山現象(Other volcanic phenomena)	Gl,As,Bm,Af

Note: Plumes were from Mt. Minamidake A Crater(A), B Crater(B) and Showa Crater(S)

Note: Uncolored:Plume color was White(W).

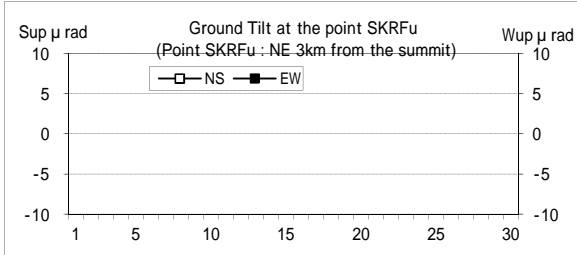
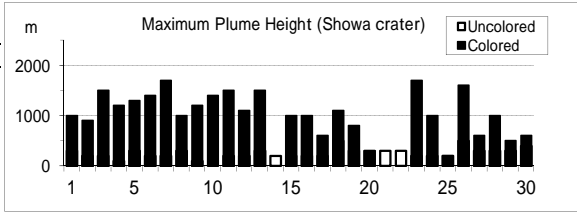
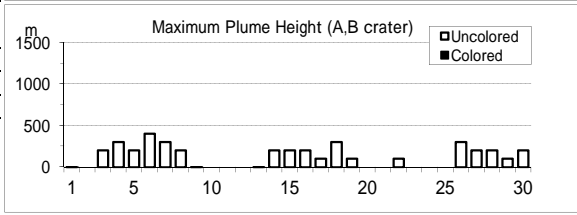
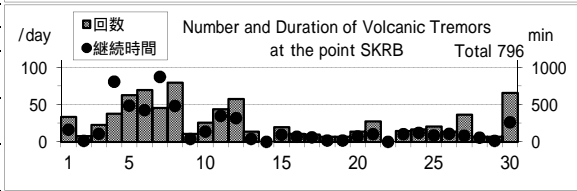
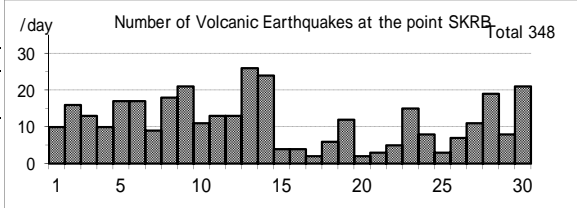
Colored:Plume color was Light white(LW), Grayish white(GW),

Gray(G) and other.

爆発時の遠望観測(Visual observation of explosion)

Date	Time	Col	Q	H(*100m)	Dir	Loc	Remarks
1101	0639	GW	X	>3	NE	S	Bm(6合目),AS 7.1(O), 38.0(D)
1101	1348	GW	2	3	S	S	Bm(5合目),AS 30.1(D), 2.4(A)
1101	1417	GW	2	6	SE	S	Bm(5合目),AS 3.6(O), 70.8(D)
1101	1906	X	3	10	S	S	Bm(4合目),AS 9.9(O), 72.7(D)
1101	1932	X	3	10	S	S	Bm(4合目),AS 5.3(O), 48.7(D)
1102	0000	X	2	4	S	S	Bm(5合目),AS 7.7(O), 71.8(D)
1102	0454	X	2	6	S	S	Bm(5合目),AS 5.2(O), 60.2(D)
1102	0548	X	2	4	S	S	Bm(5合目),AS 3.7(O), 36.9(D)
1102	0613	GW	2	4	S	S	Bm(6合目),AS 23.2(D), 2.8(A)
1102	0859	GW	2	5	S	S	Bm(6合目),AS 30.6(D), 3.4(A)
1102	1138	GW	3	8	SE	S	Bm(5合目),AS 20.5(D), 4.5(A)
1102	1220	GW	3	7	SE	S	Bm(4合目),AS 6.2(O), 48.2(D)
1102	1622	GW	2	5	SE	S	Bm(6合目),AS 36.3(D), 6.3(A)
1102	1715	GW	3	7	SE	S	Bm(4合目),AS 80.8(D), 10.7(A)
1102	1748	X	2	6	SE	S	Bm(4合目),AS 76.3(D), 10.1(A)
1102	1809	X	3	8	SE	S	Bm(5合目),AS 3.4(O), 39.5(D)
1102	1836	X	3	9	SE	S	Bm(5合目),AS 34.4(D), 6.9(A)
1103	0604	X	3	8	S	S	Bm(5合目),AS 8.8(O), 42.4(D)
1103	0823	GW	3	13	S	S	AS 11.4(O), 41.3(D)
1103	0904	GW	3	13	S	S	AS 7.8(O), 31.6(D)
1103	1422	GW	3	10	S	S	Bm(7合目),AS 2.3(O), 13.8(D)
1103	1653	GW	3	14	S	S	Bm(5合目),AS 3.2(O), 22.9(D)
1103	1726	GW	3	15	S	S	Bm(5合目),AS 9.2(O), 47.3(D)
1103	1750	X	3	9	S	S	Bm(5合目),AS 14.0(O), 60.6(D)
1103	2030	X	3	10	N	S	Bm(5合目),AS 8.4(O), 38.9(D)
1103	2057	X	3	12	N	S	Bm(5合目),AS 13.4(O), 62.8(D)
1104	0125	X	3	11	NE	S	Bm(6合目),AS 3.2(O), 18.6(D)
1104	0359	X	3	10	NE	S	Bm(5合目),AS 7.0(O), 40.5(D)
1104	1144	GW	3	10	NE	S	Bm(5合目),AS 1.5(O), 8.1(D)
1104	1600	GW	3	11	E	S	Bm(5合目),AS 8.2(O), 54.1(D)
1104	1610	GW	3	11	E	S	Bm(6合目),AS 3.7(O), 26.0(D)
1104	1638	GW	3	10	E	S	Bm(5合目),AS 6.1(O), 38.1(D)
1104	2305	X	3	12	NE	S	Bm(5合目),AS 1.0(O), 6.7(D)

Sakurajima: November,2009





Date	Time	Col	Q	H(+100m)	Dir	Loc	Remarks
1104	2332	X	3	12	NE	S	Bm(6合目),AS 4.1(O), 27.5(D)
1105	0003	X	3	13	NE	S	Bm(5合目),AS 9.7(O), 67.0(D)
1105	0119	X	3	12	NE	S	Bm(6合目),AS 5.9(O), 40.9(D)
1105	0245	X	3	12	NE	S	Bm(6合目),AS 4.3(O), 29.9(D)
1105	0653	GW	3	10	E	S	Bm(6合目),AS 3.1(O), 16.3(D)
1105	2034	X	3	10	SE	S	Bm(6合目),AS 6.1(O), 37.6(D)
1105	2123	X	3	10	T	S	Bm(6合目),AS 11.8(O), 66.1(D)
1105	2152	X	3	10	T	S	Bm(4合目),AS 16.8(O), 80.6(D)
1106	0122	X	3	10	E	S	Bm(6合目),AS 5.7(O), 36.4(D)
1106	0634	GW	3	10	S	S	Bm(6合目),AS 4.8(O), 25.9(D)
1106	0658	GW	X	>8	T	S	Bm(6合目),AS 5.4(O), 31.1(D)
1106	0909	GW	2	7	SE	S	Bm(6合目),AS 7.1(O), 46.3(D)
1106	1616	GW	2	8	T	S	Bm(6合目),AS 3.8(O), 24.2(D)
1106	1653	GW	3	14	E	S	Bm(4合目),AS 10.1(O), 59.8(D)
1106	1722	GW	3	11	E	S	Bm(4合目),AS 7.8(O), 45.3(D)
1106	2020	X	X	>8	T	S	Bm(5合目),AS 1.8(O), 11.5(D)
1107	0028	X	3	16	E	S	Bm(5合目),AS 2.7(O), 17.4(D)
1107	0105	X	3	15	E	S	Bm(4合目),AS 3.7(O), 29.7(D)
1107	0243	X	3	17	E	S	Bm(5合目),AS 3.6(O), 24.9(D)
1107	1400	GW	3	15	SW	S	Bm(5合目),AS 8.9(O), 46.7(D)
1107	1545	GW	3	14	SW	S	Bm(5合目),AS 3.4(O), 16.9(D)
1109	0729	X	X	X	X	S	AS 3.2(O), 18.2(D)
1109	0800	GW	3	10	S	S	Bm(5合目),AS 7.9(O), 45.3(D)
1109	1539	GW	3	12	SE	S	Bm(4合目),AS 5.8(O), 46.0(D)
1109	1635	GW	2	8	SE	S	Bm(4合目),AS 4.6(O), 35.8(D)
1109	1814	X	3	10	T	S	Bm(5合目),AS 3.0(O), 17.9(D)
1109	1831	X	3	10	T	S	Bm(6合目),AS 5.2(O), 25.7(D)
1109	2110	X	3	10	T	S	Bm(4合目),AS 6.6(O), 38.3(D)
1110	1506	X	X	X	X	S	AS 2.2(O), 17.0(D)
1110	1537	GW	3	14	N	S	AS 6.2(O), 38.6(D)
1111	1812	X	3	12	S	S	Bm(5合目),AS 2.7(O), 9.7 (D)
1111	1917	X	3	10	S	S	Bm(5合目),AS 4.9(O), 19.9(D)
1111	2003	X	3	10	SW	S	Bm(5合目),AS 4.4(O), 16.6(D)
1112	1310	GW	3	10	W	S	Bm(5合目),AS 9.3(O), 38.3(D)
1112	1448	GW	3	11	W	S	Bm(4合目),AS 13.0(O), 53.8(D)
1112	2122	X	3	10	W	S	Bm(5合目),AS 4.8(O), 16.8(D)
1117	2114	X	X	>6	S	S	Bm(4合目),AS 7.3(O), 60.4(D)
1123	1648	GW	3	17	E	S	Bm(5合目),AS 1.2(O), 5.1(D)
1130	1141	GW	X	>6	SE	S	Bm(7合目),AS 1.4(O), 16.4(D)

## 臨時観測 平成21年(2009年)11月 Extra Observation in November,2009

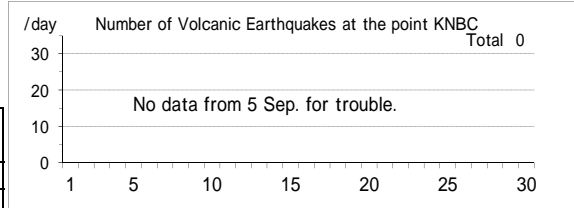
### (1) 倶多楽

札幌火山監視・情報センターによる火山機動観測  
Mobile observation by the Sapporo VOIC  
Date: Since 15 Jul.,2004

震動観測(Seismic Observation)	月計 total	最大(起日) max (date)
Observation Point: KNBC		
火山性地震回数(Number of volcanic earthquakes)	0	0
火山性微動回数(Number of volcanic tremors)	0	0
微動継続時間(Duration of volcanic tremors) (min.)	-	-

Note:KNBC (N42°30.1' E141°7.4' H570m)

### Kuttara: November,2009



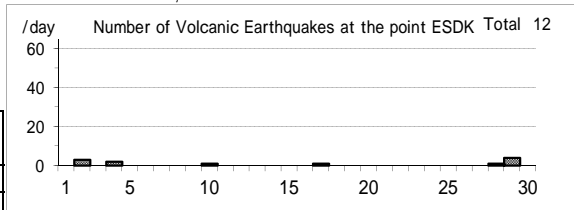
### (2) 恵山

札幌火山監視・情報センターによる火山機動観測  
Mobile observation by the Sapporo VOIC  
Date: Since 24 Jul.,2005

震動観測(Seismic Observation)	月計 total	最大(起日) max (date)
Observation Point: ESDK		
火山性地震回数(Number of volcanic earthquakes)	12	4 (29)
火山性微動回数(Number of volcanic tremors)	0	0
微動継続時間(Duration of volcanic tremors) (min.)	-	-

Note: ESDK (N41°48.7' E141°9.7' H369m)

### Esan: November,2009



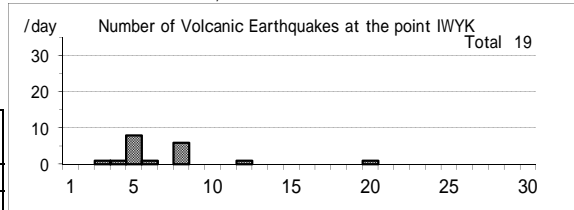
### (3) 岩手山

仙台火山監視・情報センターによる火山機動観測  
Mobile observation by the Sendai VOIC  
Date: Since 4 Oct.,1995

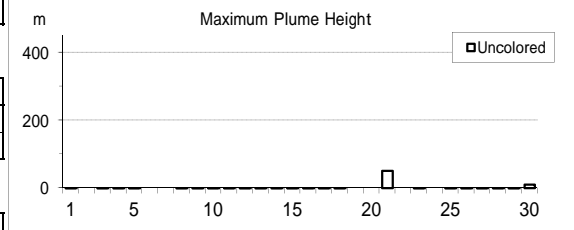
震動観測(Seismic Observation)	月計 total	最大(起日) max (date)
Observation Point: IWYK		
火山性地震回数(Number of volcanic earthquakes)	19	8 (5)
火山性微動回数(Number of volcanic tremors)	0	0
微動継続時間(Duration of volcanic tremors) (min.)	-	-

Note:IWYK (N39°52.7' E140°57.6' H763m)

### Iwatesan: November,2009



遠望観測(Visual Observation)	最大(起日) max (date)
噴煙量(Quantity of plumes) (JMA's scale)	1 (21,30)
噴煙の高さ(Height of plumes) (m)	50 (21)



噴煙の色(Color of plumes)	W
他の火山現象(Other volcanic phenomena)	-

Note: Plumes were from the Kurokurayama Summit(LocationX), the Ojigokudani(Y-6)

Note: Uncolored:Plume color was White(W), Light white(LW).

Colored:Plume color was Grayish white(GW), Gray(G) and other.

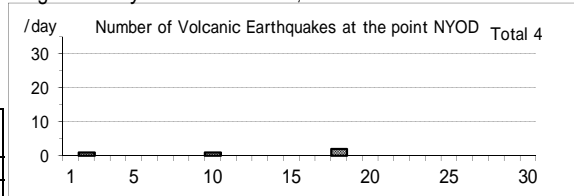
### (4) 新潟焼山

気象庁本庁による火山機動観測  
Mobile observation by the headquarter of JMA  
Date: Since 1 Dec.,2005

震動観測(Seismic Observation)	月計 total	最大(起日) max (date)
Observation Point: NYOD		
火山性地震回数(Number of volcanic earthquakes)	4	2 (18)
火山性微動回数(Number of volcanic tremors)	0	0
微動継続時間(Duration of volcanic tremors) (min.)	-	-

Note: NYOD (N36°57.4' E138°2.3' H1,150m)

### NiigataYakeyama: November,2009



### (5) 白山

気象庁本庁による火山機動観測

Mobile observation by the headquarter of JMA

Date: Since 1 Dec.,2005

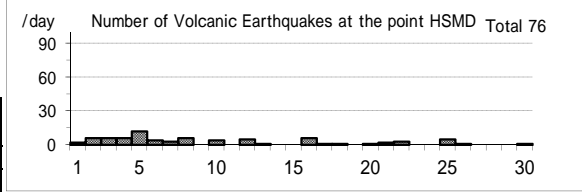
震動観測(Seismic Observation)

Observation Point: HSMD

	月計 total	最大(起日) max (date)
火山性地震回数(Number of volcanic earthquakes)	76	12 (5)
火山性微動回数(Number of volcanic tremors)	0	0
微動継続時間(Duration of volcanic tremors) (min.)	-	-

Note: HSMD (N36°8.8' E136°45.9' H2,345m)

### Hakusan: November,2009



### (6) 富士山

気象庁本庁による火山機動観測

Mobile observation by the headquarter of JMA

Date: Since 18 Oct.,1987

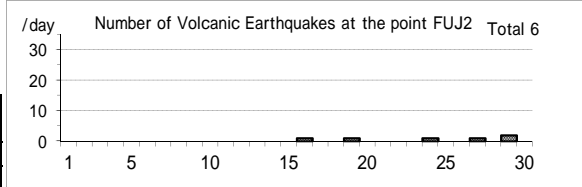
震動観測(Seismic Observation)

Observation Point: FUJ2

	月計 total	最大(起日) max (date)
火山性地震回数(Number of volcanic earthquakes)	6	2 (29)
火山性微動回数(Number of volcanic tremors)	0	0
微動継続時間(Duration of volcanic tremors) (min.)	-	-

Note: FUJ2 (N35°21.6' E138°43.6' H3,772m)

### Fujisan: November,2009



### (7) 桜島

地磁気観測所鹿屋出張所による桜島の日降灰量観測

Extra observation of daily amounts of ash fall from Sakurajima by the Kanoya Satellite Observatory, the Magnetic Observatory, JMA

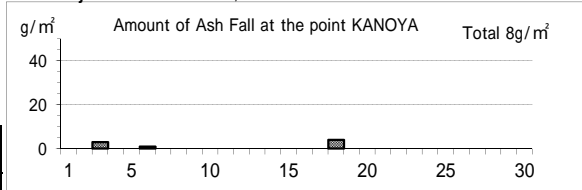
Date: daily (a.m. 0900)

遠望観測(Visual Observation)

Observation Point: KANOYA

	月計	最大(起日)
降灰量(Amount of ash fall) (g/m <sup>2</sup> )	8	4 (18)

### Sakurajima: November,2009



### (8) 薩摩硫黄島

福岡火山監視・情報センター、鹿児島地方気象台による火山機動観測

Mobile observation by the Fukuoka VOIC and Kagoshima LMO

Date: Since 10 Sep.,1997

震動観測(Seismic Observation)

Observation Point: ST11

	月計 total	最大(起日) max (date)
火山性地震回数(Number of volcanic earthquakes)	3259	140 (14)
火山性微動回数(Number of volcanic tremors)	0	0 (2)
微動継続時間(Duration of volcanic tremors) (min.)	0	0 (2)

Note: ST11 (N30°47.3' E130°18.1' H380m)

遠望観測(Visual Observation)

最大(起日) max (date)

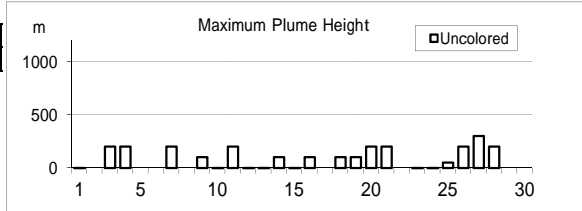
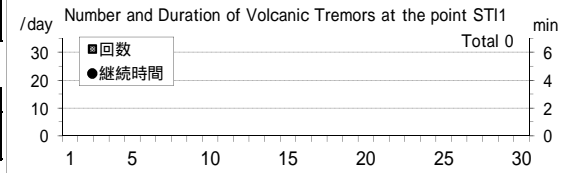
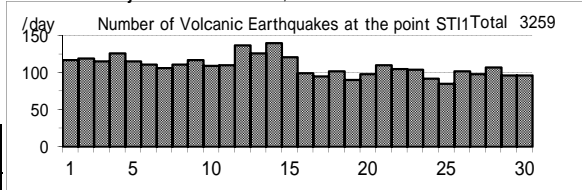
噴煙量(Quantity of plumes) (JMA's scale)	1 (abbr.)
噴煙の高さ(Height of plumes) (m)	300 (27)

噴煙の色(Color of plumes)	W
他の火山現象(Other volcanic phenomena)	-

Note: Uncolored:Plume color was White(W), Light white(LW).

Colored:Plume color was Grayish white(GW), Gray(G) and other.

### Satsuma-Iojima: November,2009



(9)口永良部島

福岡火山監視・情報センター、鹿児島地方気象台による火山機動観測  
 Mobile observation by the Fukuoka VOIC and Kagoshima LMO  
 Date: Since 11 Sep.,1999 (seismic), 10 Mar.,2004 (Visual)

震動観測(Seismic Observation)	月計 total	最大(起日) max (date)
Observation Point: KER1		
火山性地震回数(Number of volcanic earthquakes)	136	11 (28)
火山性微動回数(Number of volcanic tremors)	2	1 (20,27)
微動継続時間(Duration of volcanic tremors) (min.)	1	0 (20)

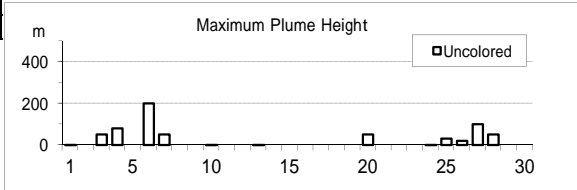
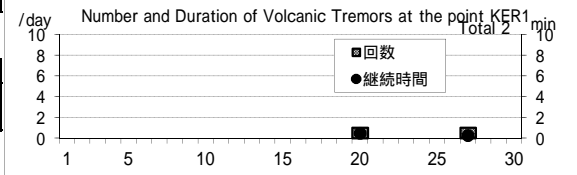
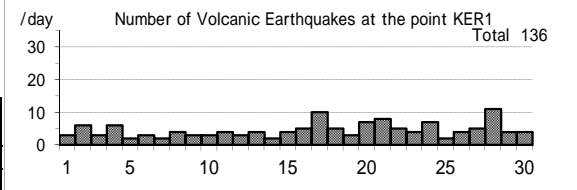
Note: KER1 (N30°26.9' E130°12.9' H566m)

遠望観測(Visual Observation)	最大(起日) max (date)
噴煙量(Quantity of plumes) (JMA's scale)	1 (abbr.)
噴煙の高さ(Height of plumes) (m)	200 (6)

噴煙の色(Color of plumes)	W
他の火山現象(Other volcanic phenomena)	-

Note: Uncolored:Plume color was White(W), Light white(LW).  
 Colored:Plume color was Grayish white(GW), Gray(G) and other.

Kuchinoerabujima: November,2009



(10)諏訪之瀬島

福岡火山監視・情報センター、鹿児島地方気象台による火山機動観測  
 Mobile observation by the Fukuoka VOIC and Kagoshima LMO  
 Date: Since 6 Jul.,2001

震動観測(Seismic Observation)	月計 total	最大(起日) max (date)
Observation Point: SWA1		
火山性地震回数(Number of volcanic earthquakes)	396	114 (14)
火山性微動回数(Number of volcanic tremors)	193	17 (7,16)
微動継続時間(Duration of volcanic tremors) (min.)	1766	193 (8)

Note: SWA1 (N29°37.7' E129°42.3' H450m)

\* Continuous volcanic tremors occurred intermittently in this month.  
 Number of volcanic tremors and duration are not including the continuous volcanic tremor.

遠望観測(Visual Observation)	月計 total	最大(起日) max (date)
爆発回数(Number of explosive eruptions)	7	2 (16)

	最大(起日) max (date)
噴煙量(Quantity of plumes) (JMA's scale)	2 (3,5)
噴煙の高さ(Height of plumes) (m)	800 (5)

噴煙の色(Color of plumes)	W,GW
他の火山現象(Other volcanic phenomena)	-

Note: Uncolored:Plume color was White(W), Light white(LW).  
 Colored:Plume color was Grayish white(GW), Gray(G) and other.

Suwanosejima: November,2009

