

# 火山観測 Summary of Observations on Volcanoes

## 常時観測 平成21年(2009年)9月

### Constant Observation in September,2009

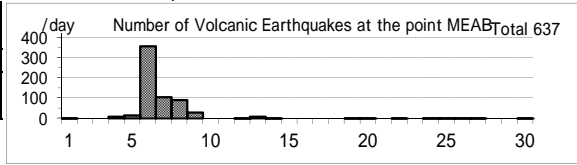
#### (1) 雌阿寒岳

震動観測(Seismic Observation)

	月計 total	最大(起日) max (date)
Observation Point: MEAB		
火山性地震回数(Number of volcanic earthquakes)	637	358 (6)
火山性微動回数(Number of volcanic tremors)	0	0
微動継続時間(Duration of volcanic tremors) (min.)	-	-

Note: MEAB (N43 22.8' E143 58.7' H680m)

#### Meakandake: September,2009



遠望観測(Visual Observation)

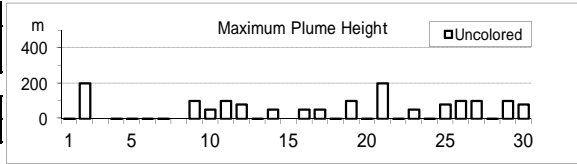
	最大(起日) max (date)
噴煙量(Quantity of plumes) (JMA's scale)	1 (abbr.)
噴煙の高さ(Height of plumes) (m)	200 (2.21)

噴煙の色(Color of plumes)	W
他の火山現象(Other volcanic phenomena)	-

Note: Plumes were from the Pommachineshiri Summit Crater(Location T), the Nakamachineshiri Crater(U), the Akanuma Crater(M) and/or Pommachineshiri NW Fumaroles(N).

Note: Uncolored:Plume color was White(W).

Colored:Plume color was Light white(LW), Grayish white(GW), Gray(G) and other.



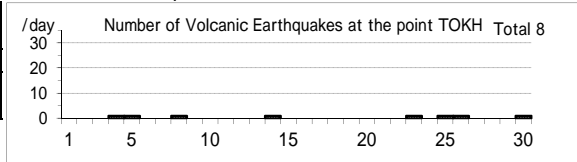
#### (2) 十勝岳

震動観測(Seismic Observation)

	月計 total	最大(起日) max (date)
Observation Point: TOKH		
火山性地震回数(Number of volcanic earthquakes)	8	1 (abbr.)
火山性微動回数(Number of volcanic tremors)	0	0
微動継続時間(Duration of volcanic tremors) (min.)	-	-

Note: TOKH (N43 26.0' E142 40.2' H1,355m)

#### Tokachidake: September,2009



遠望観測(Visual Observation)

	最大(起日) max (date)
噴煙量(Quantity of plumes) (JMA's scale)	1 (abbr.)
噴煙の高さ(Height of plumes) (m)	200 (2.27)

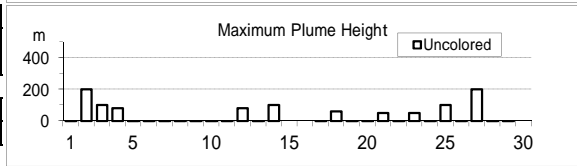
噴煙の色(Color of plumes)	W
他の火山現象(Other volcanic phenomena)	-

Note: Plumes were from the Taisho Crater(Location X),

the 62 crater Area(P,Q,Y), the Furikozawa Fumaroles (F) and/or the Kyufun Crater (Z).

Note: Uncolored:Plume color was White(W).

Colored:Plume color was Light white(LW), Grayish white(GW), Gray(G) and other.



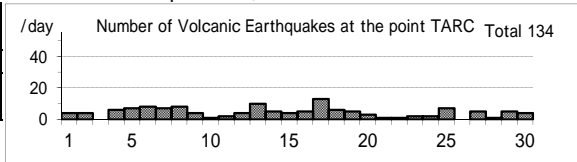
#### (3) 樽前山

震動観測(Seismic Observation)

	月計 total	最大(起日) max (date)
Observation Point: TARC		
火山性地震回数(Number of volcanic earthquakes)	134	13 (17)
火山性微動回数(Number of volcanic tremors)	2	2 (25)
微動継続時間(Duration of volcanic tremors) (min.)	2	2 (2)

Note: TARC (N42 42.2' E141 22.6' H638m)

#### Tarumaesan: September,2009



遠望観測(Visual Observation)

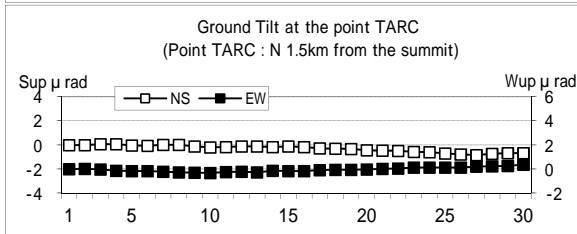
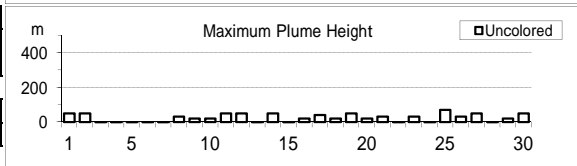
	最大(起日) max (date)
噴煙量(Quantity of plumes) (JMA's scale)	1 (abbr.)
噴煙の高さ(Height of plumes) (m)	70 (25)

噴煙の色(Color of plumes)	W
他の火山現象(Other volcanic phenomena)	-

Note: Plumes were from the Summit Area(Location A, B and/or E).

Note: Uncolored:Plume color was White(W).

Colored:Plume color was Light white(LW), Grayish white(GW), Gray(G) and other.



(4)有珠山

震動観測(Seismic Observation)	月計 total	最大(起日) max (date)
Observation Point: USUA		
火山性地震回数(Number of volcanic earthquakes)	24	4 (21)
火山性微動回数(Number of volcanic tremors)	0	0
微動継続時間(Duration of volcanic tremors) (min.)	-	-

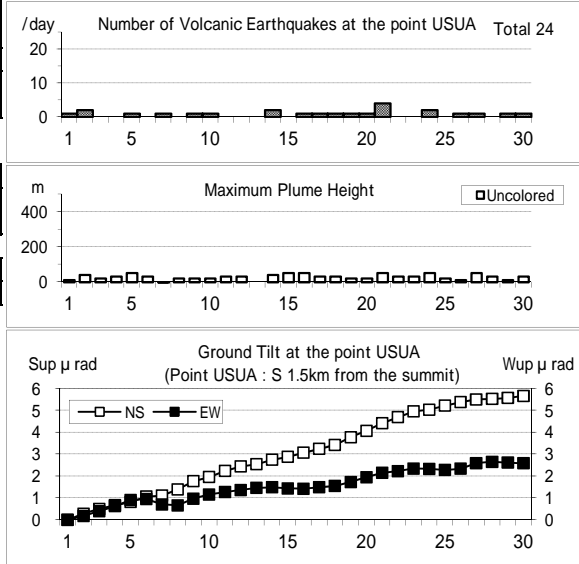
Note: USUA (N42°31.7' E140°50.2' H246m)

遠望観測(Visual Observation)	最大(起日) max (date)
噴煙量(Quantity of plumes) (JMA's scale)	1 (abbr.)
噴煙の高さ(Height of plumes) (m)	50 (abbr.)
噴煙の色(Color of plumes)	W
他の火山現象(Other volcanic phenomena)	-

Note: Plumes were from the Summit Area of Usuzan(Location P), Mt.showa-shinazan(Z), Nishi-yama vent group(N) and Konpira-yama vent group(K).

Note: Uncolored:Plume color was White(W).  
Colored:Plume color was Light white(LW), Grayish white(GW), Gray(G) and other.

Usuzan: September,2009



(5)北海道駒ヶ岳

震動観測(Seismic Observation)	月計 total	最大(起日) max (date)
Observation Point: KOMA		
火山性地震回数(Number of volcanic earthquakes)	0	0
火山性微動回数(Number of volcanic tremors)	0	0
微動継続時間(Duration of volcanic tremors) (min.)	-	-

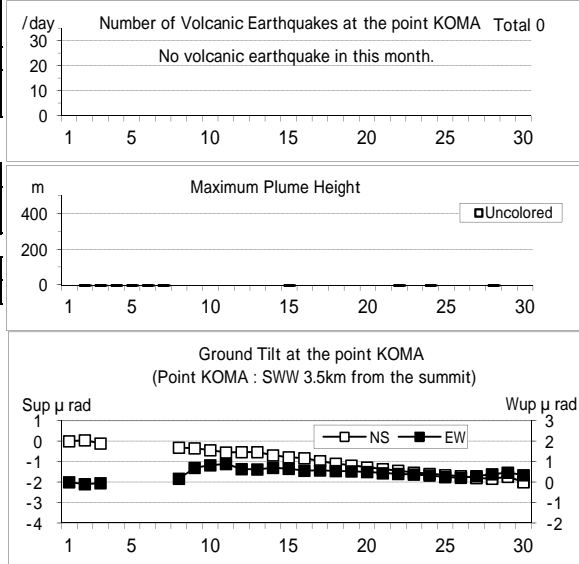
Note: KOMA (N42°03.2' E140°38.3' H265m)

遠望観測(Visual Observation)	最大(起日) max (date)
噴煙量(Quantity of plumes) (JMA's scale)	-
噴煙の高さ(Height of plumes) (m)	-
噴煙の色(Color of plumes)	-
他の火山現象(Other volcanic phenomena)	-

Note: Plumes were from the Showa-4 Crater(Location D1) and/or the 96 South Crater(D2).

Note: Uncolored:Plume color was White(W).  
Colored:Plume color was Light white(LW), Grayish white(GW), Gray(G) and other.

Hokkaido-Komagatake: September,2009



(6)吾妻山

震動観測(Seismic Observation)	月計 total	最大(起日) max (date)
Observation Point: AZUA		
火山性地震回数(Number of volcanic earthquakes)	13	3 (27)
火山性微動回数(Number of volcanic tremors)	0	0
微動継続時間(Duration of volcanic tremors) (min.)	-	-

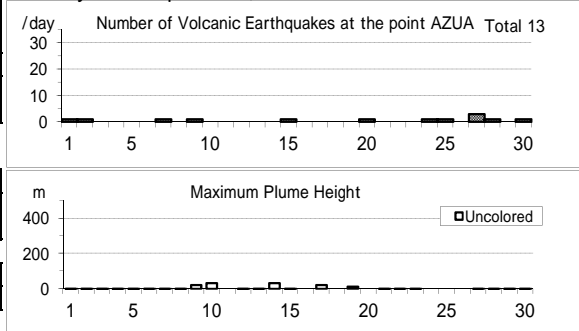
Note: AZUA (N37°43.3' E140°16.5' H1,295m)

遠望観測(Visual Observation)	最大(起日) max (date)
噴煙量(Quantity of plumes) (JMA's scale)	1 (abbr.)
噴煙の高さ(Height of plumes) (m)	30 (10,14)
噴煙の色(Color of plumes)	W
他の火山現象(Other volcanic phenomena)	-

Note: Plumes were from the Oana Crater

Note: Uncolored:Plume color was White(W).  
Colored:Plume color was Light white(LW), Grayish white(GW), Gray(G) and other.

Azumayama: September,2009



(7)安達太良山

震動観測(Seismic Observation)

	月計 total	最大(起日) max (date)
火山性地震回数(Number of volcanic earthquakes)	2	1 (7,9)
火山性微動回数(Number of volcanic tremors)	0	0
微動継続時間(Duration of volcanic tremors) (min.)	-	-

Note: ADTB(N37° 38.1 E140° 18.2 H1,320m)

遠望観測(Visual Observation)

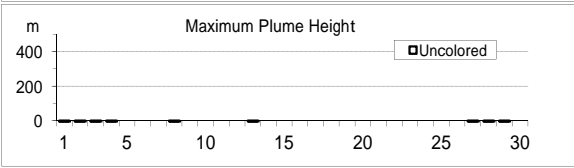
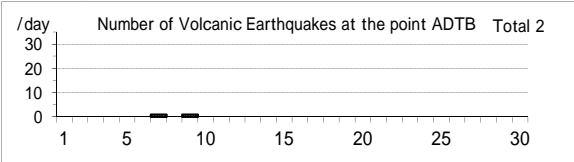
	最大(起日) max (date)
噴煙量(Quantity of plumes) (JMA's scale)	-
噴煙の高さ(Height of plumes) (m)	-
噴煙の色(Color of plumes)	-
他の火山現象(Other volcanic phenomena)	-

Note: Plumes were from the Numanodaira - SW area.

Note: Uncolored:Plume color was White(W).

Colored:Plume color was Light white(LW), Grayish white(GW), Gray(G) and other.

Adatarayama: September,2009



(8)磐梯山

震動観測(Seismic Observation)

	月計 total	最大(起日) max (date)
火山性地震回数(Number of volcanic earthquakes)	50	33 (19)
火山性微動回数(Number of volcanic tremors)	0	0
微動継続時間(Duration of volcanic tremors) (min.)	-	-

Note: BNDA (N37° 35.0 E140° 04.8 H1000m)

遠望観測(Visual Observation)

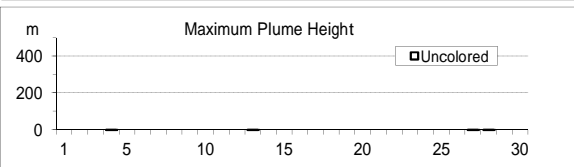
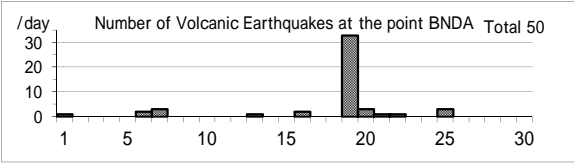
	最大(起日) max (date)
噴煙量(Quantity of plumes) (JMA's scale)	-
噴煙の高さ(Height of plumes) (m)	-
噴煙の色(Color of plumes)	-
他の火山現象(Other volcanic phenomena)	-

Note: Plumes were from the Fumarolic area in Crater wall.

Note: Uncolored:Plume color was White(W).

Colored:Plume color was Light white(LW), Grayish white(GW), Gray(G) and other.

Bandaisan: September,2009



(9)那須岳

震動観測(Seismic Observation)

	月計 total	最大(起日) max (date)
火山性地震回数(Number of volcanic earthquakes)	14	4 (27)
火山性微動回数(Number of volcanic tremors)	0	0
微動継続時間(Duration of volcanic tremors) (min.)	-	-

Note: NSUA (N37° 06.2' E139° 59.6' H1,083m)

遠望観測(Visual Observation)

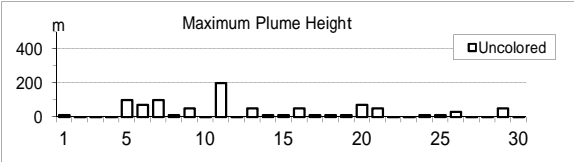
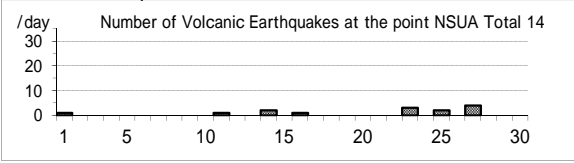
	最大(起日) max (date)
噴煙量(Quantity of plumes) (JMA's scale)	1 (abbr.)
噴煙の高さ(Height of plumes) (m)	200 (11)
噴煙の色(Color of plumes)	W
他の火山現象(Other volcanic phenomena)	-

Note: Plumes were from the west flank of Mt. Nasudake.

Note: Uncolored:Plume color was White(W).

Colored:Plume color was Light white(LW), Grayish white(GW), Gray(G) and other.

Nasudake: September,2009



(10)草津白根山

震動観測(Seismic Observation)

	月計 total	最大(起日) max (date)
火山性地震回数(Number of volcanic earthquakes)	35	9 (12)
火山性微動回数(Number of volcanic tremors)	0	0
微動継続時間(Duration of volcanic tremors) (min.)	-	-

Note: KSHA (N36° 38.9' E138° 32.7' H1,933m)

遠望観測(Visual Observation)

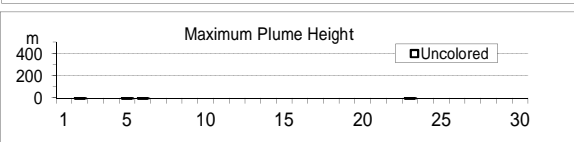
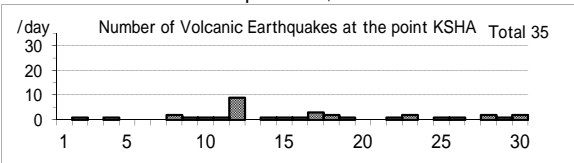
	最大(起日) max (date)
噴煙量(Quantity of plumes) (JMA's scale)	-
噴煙の高さ(Height of plumes) (m)	-
噴煙の色(Color of plumes)	-
他の火山現象(Other volcanic phenomena)	-

Note: Plumes were from the Yugama Crater and Fumaroles at northern side of Yugama Crater

Note: Uncolored:Plume color was White(W).

Colored:Plume color was Light white(LW), Grayish white(GW), Gray(G) and other.

Kusatsu-Shiranesan: September,2009



(11)浅間山

震動観測(Seismic Observation) Observation Point: ASMB	月計 total	最大(起日) max (date)
火山性地震回数(Number of volcanic earthquakes)	1450	88 (11)
火山性微動回数(Number of volcanic tremors)	16	10 (25)
微動継続時間(Duration of volcanic tremors) (min.)	31	21 (25)

Note: ASMB (N36°23.4' E138°31.1' H1,864m)

遠望観測(Visual Observation)	最大(起日) max (date)
噴煙量(Quantity of plumes) (JMA's scale)	3 (4)
噴煙の高さ(Height of plumes) (m)	500 (16,26)

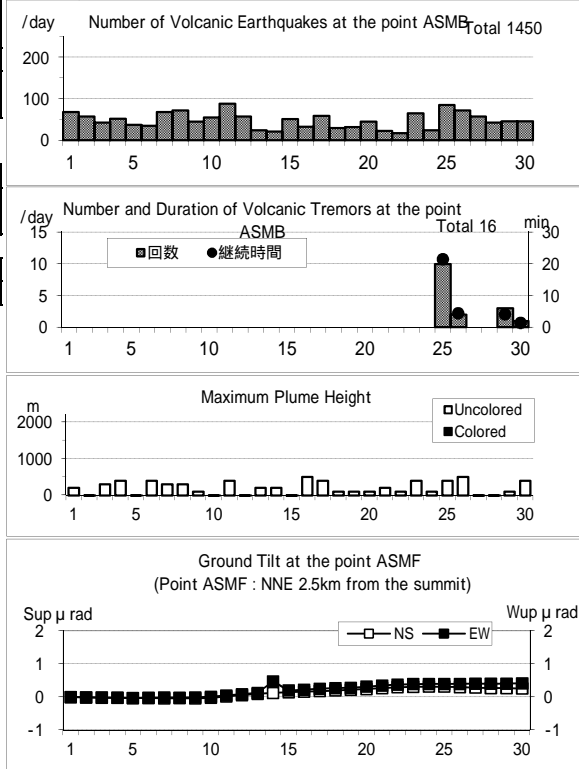
噴煙の色(Color of plumes)	W
他の火山現象(Other volcanic phenomena)	-

Note: Plumes were from the Kamayama Crater(Location A).

Note: Uncolored:Plume color was White(W).

Colored:Plume color was Light white(LW), Grayish white(GW), Gray(G) and other.

Asamayama: September,2009



(12)御嶽山

震動観測(Seismic Observation) Observation Point: ONTA	月計 total	最大(起日) max (date)
火山性地震回数(Number of volcanic earthquakes)	10	3 (7)
火山性微動回数(Number of volcanic tremors)	0	0
微動継続時間(Duration of volcanic tremors) (min.)	-	-

Note: ONTA (N35°52.6' E137°29.7' H2,228m)

遠望観測(Visual Observation)	最大(起日) max (date)
噴煙量(Quantity of plumes) (JMA's scale)	1 (abbr.)
噴煙の高さ(Height of plumes) (m)	50 (abbr.)

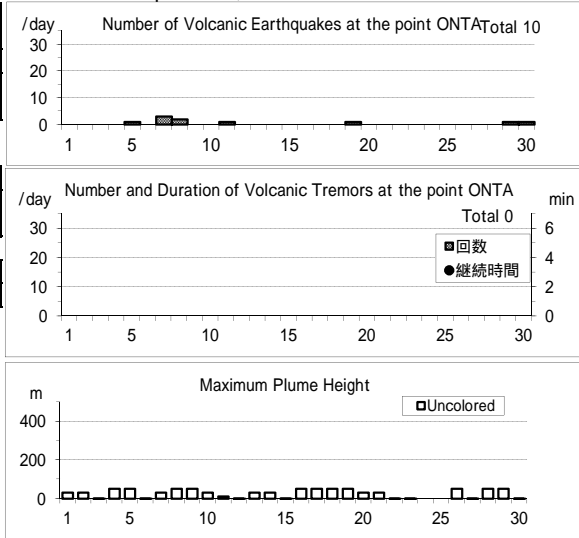
噴煙の色(Color of plumes)	W
他の火山現象(Other volcanic phenomena)	-

Note: Plumes were from the Otaki summit Crater (A) and/or S6

Note: Uncolored:Plume color was White(W).

Colored:Plume color was Light white(LW), Grayish white(GW), Gray(G) and other.

Ontakesan: September,2009



(13)伊豆東部火山群

震動観測(Seismic Observation) Observation Point: ITBA,Kamata2	月計 total	最大(起日) max (date)
火山性地震回数(Number of volcanic earthquakes)	30	13 (8)
火山性微動回数(Number of volcanic tremors)	0	0
微動継続時間(Duration of volcanic tremors) (min.)	-	-

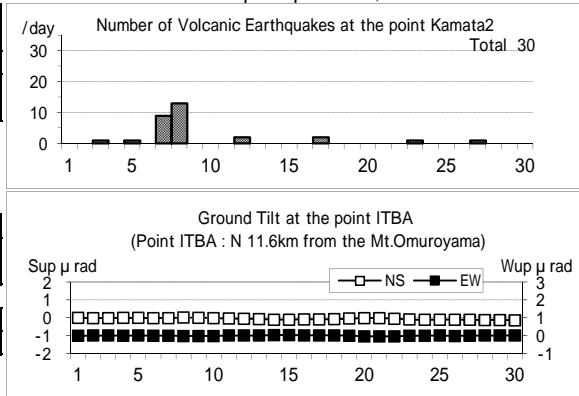
Note: ITBA (N35°00.5' E139°05.9' H12m)

Kamata2(N34°55.71' E139°03.65' H175m)

遠望観測(Visual Observation)	最大(起日) max (date)
噴煙量(Quantity of plumes) (JMA's scale)	-
噴煙の高さ(Height of plumes) (m)	-

噴煙の色(Color of plumes)	-
他の火山現象(Other volcanic phenomena)	-

Izu-Tobu Volcano Group: September,2009



(14)伊豆大島

震動観測(Seismic Observation)  
Observation Point: OSMA

	月計 total	最大(起日) max (date)
火山性地震回数(Number of volcanic earthquakes)	118	36 (8)
火山性微動回数(Number of volcanic tremors)	0	0
微動継続時間(Duration of volcanic tremors) (min.)	-	-

Note: OSMA (N34 44.2' E139 23.2' H553m)

遠望観測(Visual Observation)

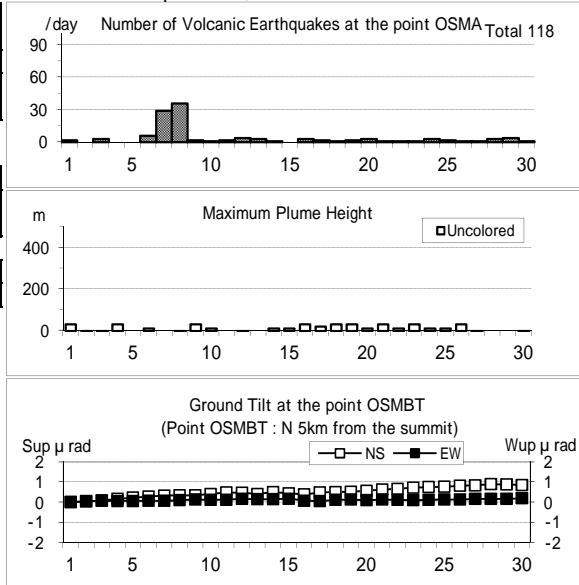
	最大(起日) max (date)
噴煙量(Quantity of plumes) (JMA's scale)	1 (abbr.)
噴煙の高さ(Height of plumes) (m)	30 (abbr.)
噴煙の色(Color of plumes)	W
他の火山現象(Other volcanic phenomena)	-

Note: Plumes were from the Miharayama Summit Crater(Location A),  
the Fumaroles at western side of Miharashinzan(A1),  
the Fumaroles near Kengamine(A2),  
the Fumaroles at eastern side of Miharashinzan(A3)

Note: Uncolored:Plume color was White(W).

Colored:Plume color was Light white(LW), Grayish white(GW),  
Gray(G) and other.

Izu-Oshima: September,2009



(15)三宅島

震動観測(Seismic Observation)  
Observation Point: MKJA

	月計 total	最大(起日) max (date)
火山性地震回数(Number of volcanic earthquakes)	4882	274 (3)
火山性微動回数(Number of volcanic tremors)	0	0
微動継続時間(Duration of volcanic tremors) (min.)	-	-

Note: MKJA (N34 05.9' E139 32.0' H527m)

遠望観測(Visual Observation)

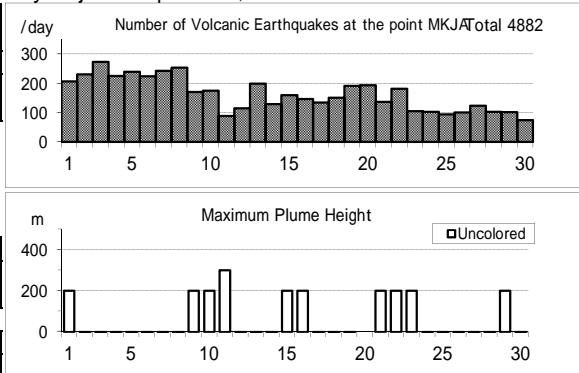
	最大(起日) max (date)
噴煙量(Quantity of plumes) (JMA's scale)	1 (abbr.)
噴煙の高さ(Height of plumes) (m)	300 (11)
噴煙の色(Color of plumes)	W
他の火山現象(Other volcanic phenomena)	-

Note: Plumes were from the Summit Crater.

Note: Uncolored:Plume color was White(W).

Colored:Plume color was Light white(LW), Grayish white(GW), Gray(G) and other.

Miyakejima: September,2009



(16)九重山

震動観測(Seismic Observation) Observation Point: KJUA	月計 total	最大(起日) max (date)
火山性地震回数(Number of volcanic earthquakes)	32	11 (17)
火山性微動回数(Number of volcanic tremors)	0	0
微動継続時間(Duration of volcanic tremors) (min.)	-	-

Note: KJUA (N33°06.2' E131°13.7' H1,280m)

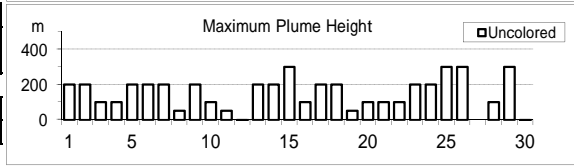
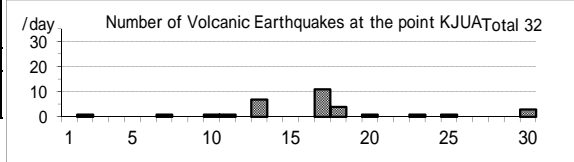
遠望観測(Visual Observation)	最大(起日) max (date)
噴煙量(Quantity of plumes) (JMA's scale)	1 (abbr.)
噴煙の高さ(Height of plumes) (m)	300 (abbr.)
噴煙の色(Color of plumes)	W
他の火山現象(Other volcanic phenomena)	-

Note: Plumes were from the east and/or north-east flank of Mt. Hossho (Location A,B,C or D).

Note: Uncolored:Plume color was White(W).

Colored:Plume color was Light white(LW), Grayish white(GW), Gray(G) and other.

Kujusan: September,2009



(17)阿蘇山

震動観測(Seismic Observation) Observation Point: ASOA	月計 total	最大(起日) max (date)
火山性地震回数(Number of volcanic earthquakes)	34	4 (28)
孤立型火山性微動回数 (Number of isolated volcanic tremors)	5305	206 (22)

Note: ASOA (N32°53.1' E131°04.7' H1,163m)

遠望観測(Visual Observation)	最大(起日) max (date)
噴煙量(Quantity of plumes) (JMA's scale)	2 (29)
噴煙の高さ(Height of plumes) (m)	700 (29)

噴煙の色(Color of plumes)	W
他の火山現象(Other volcanic phenomena)	-

Note: Plumes were from the Crater No.1 of Mt. Nakadake.

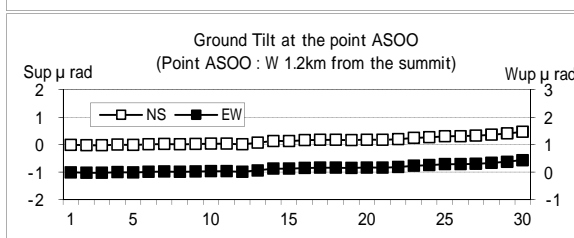
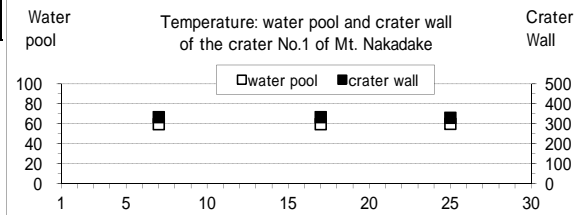
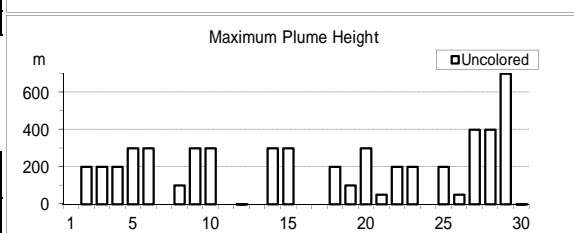
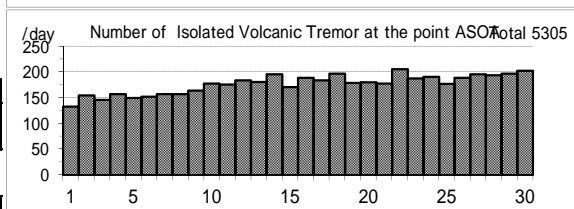
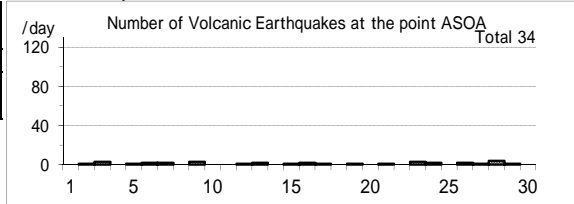
Note: Uncolored:Plume color was White(W).

Colored:Plume color was Light white(LW), Grayish white(GW), Gray(G) and other.

現地観測(Field Observation)	最高(起日) max (date)
	最低(起日) min (date)
火口内の湯だまりの表面温度 (Surface temperature on the water pool in the crater) ( )	60 (25)
火口壁の表面温度 (Surface temperature on the crater wall) ( )	335 (17)
	332 (25)

Observation Point:the Crater No.1 of Mt. Nakadake

Asosan: September,2009



(18)雲仙岳

震動観測(Seismic Observation)

Observation Point: UNZA	月計 total	最大(起日) max (date)
火山性地震回数(Number of volcanic earthquakes)	1	1 (15)
火山性微動回数(Number of volcanic tremors)	0	0
微動継続時間(Duration of volcanic tremors) (min)	-	-

Note: UNZA (N32°44.1' E130°16.1' H769m)

遠望観測(Visual Observation)

	最大(起日) max (date)
噴煙量(Quantity of plumes) (JMA's scale)	1 (6)
噴煙の高さ(Height of plumes) (m)	30 (6)

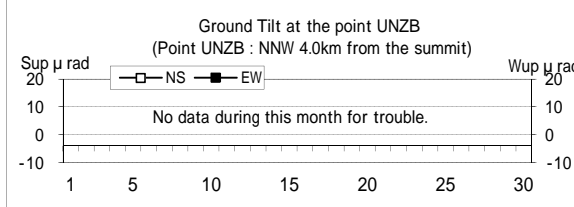
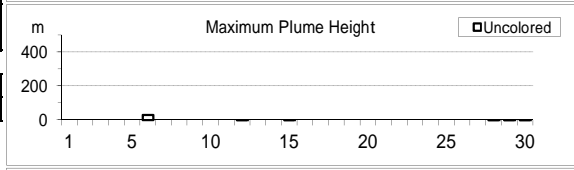
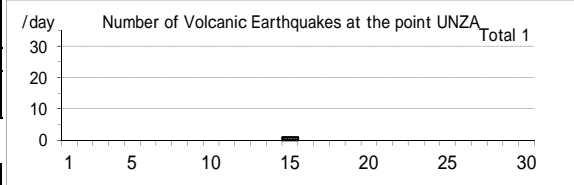
噴煙の色(Color of plumes)	W
他の火山現象(Other volcanic phenomena)	-

Note: Plumes were from the 10th Lava Dome(Location A10) and/or the 11th Lava Dome(A11).

Note: Uncolored:Plume color was White(W).

Colored:Plume color was Light white(LW), Grayish white(GW), Gray(G) and other.

Unzendake: September,2009



(19)霧島山

新燃岳 (Shinmoedake)

震動観測(Seismic Observation)

Observation Point: KIRA	月計 total	最大(起日) max (date)
火山性地震回数(Number of volcanic earthquakes)	0	0
火山性微動回数(Number of volcanic tremors)	0	0
微動継続時間(Duration of volcanic tremors) (min)	-	-

Note: KIRA (N31°54.0' E130°52.3' H1,035m)

遠望観測(Visual Observation)

	最大(起日) max (date)
噴煙量(Quantity of plumes) (JMA's scale)	1 (1,24,28)
噴煙の高さ(Height of plumes) (m)	500 (28)

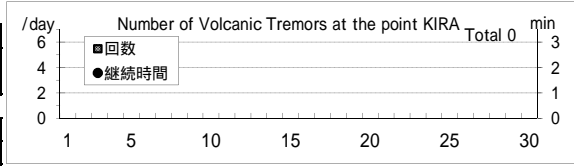
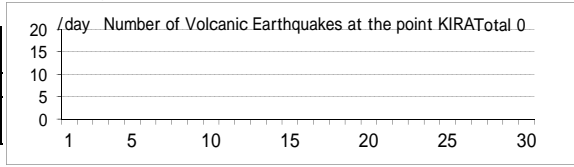
噴煙の色(Color of plumes)	W
他の火山現象(Other volcanic phenomena)	-

Note: Plumes were from the Shinmoedake Crater

Note: Uncolored:Plume color was White(W).

Colored:Plume color was Light white(LW), Grayish white(GW), Gray(G) and other.

Kirishimayama: September,2009



御鉢(Ohachi)

震動観測(Seismic Observation)

Observation Point: KTCM	月計 total	最大(起日) max (date)
火山性地震回数(Number of volcanic earthquakes)	1	1 (17)
火山性微動回数(Number of volcanic tremors)	0	0
微動継続時間(Duration of volcanic tremors) (min)	-	-

Note: KTCM (N31°53.2' E130°55.2' H1,549m)

遠望観測(Visual Observation)

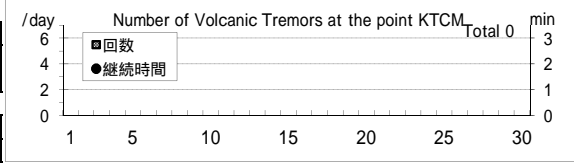
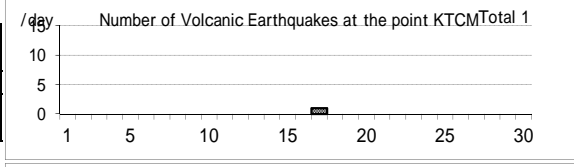
	最大(起日) max (date)
噴煙量(Quantity of plumes) (JMA's scale)	-
噴煙の高さ(Height of plumes) (m)	-

噴煙の色(Color of plumes)	-
他の火山現象(Other volcanic phenomena)	-

Note: Plumes were from the Ohachi Crater

Note: Uncolored:Plume color was White(W).

Colored:Plume color was Light white(LW), Grayish white(GW), Gray(G) and other.



(20)桜島

震動観測(Seismic Observation)

Observation Point: SKRB	月計 total	最大(起日) max (date)
火山性地震回数(Number of volcanic earthquakes)	354	22 (20)
火山性微動回数(Number of volcanic tremors)	614	75 (18)
微動継続時間(Duration of volcanic tremors) (min)	2537	315 (17)

Note: SKRB (N31°35.6' E130°38.4' H455m)

遠望観測(Visual Observation)

	月計 total	最大(起日) max (date)
爆発回数(Number of explosive eruptions)	55	8 (5)
降灰量(Amount of ash fall) (g/m <sup>2</sup> )	221	33 (6)

A,B火口 (A,B crater)	最大(起日) max (date)
噴煙量(Quantity of plumes) (JMA's scale)	2 (28)
噴煙の高さ(Height of plumes) (m)	700 (28)

昭和火口 (Showa crater)	最大(起日) max (date)
噴煙量(Quantity of plumes) (JMA's scale)	4 (1)
噴煙の高さ(Height of plumes) (m)	2200 (1)

噴煙の色(Color of plumes)	W,LW,GW
他の火山現象(Other volcanic phenomena)	Gl,As,Bm,Af

Note: Plumes were from Mt. Minamidake A Crater(A), B Crater(B) and Showa Crater(S)

Note: Uncolored:Plume color was White(W).

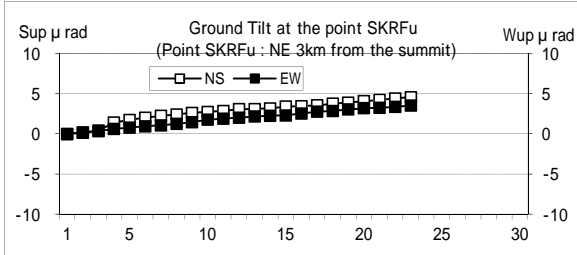
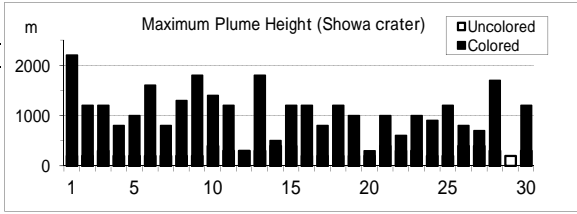
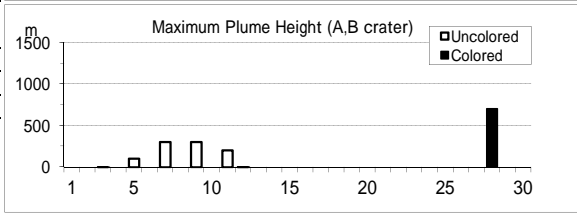
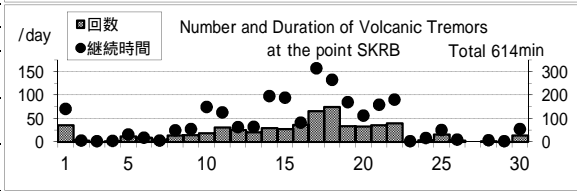
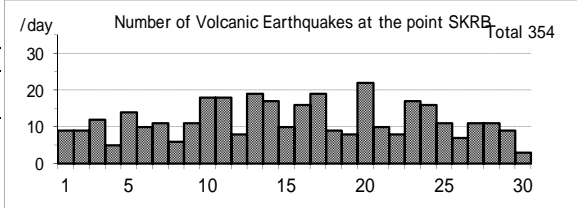
Colored:Plume color was Light white(LW), Grayish white(GW),

Gray(G) and other.

爆発時の遠望観測(Visual observation of explosion)

Date	Time	Col	Q	H(*100m)	Dir	Loc	Remarks
0901	1142	GW	3	13	T	S	Bm(4合目), AS 6.9(O), 31.2(D)
0901	1414	GW	3	13	T	S	Bm(6合目), AS 9.7(O), 43.5(D)
0902	0823	GW	3	12	SW	S	Bm(7合目), AS 8.8(O), 32.7(D)
0902	2108	X	2	5	W	S	Bm(4合目), AS 9.0(O), 36.1(D)
0903	0026	X	2	6	W	S	Bm(5合目), AS 13.1(O), 52.1(D)
0903	0233	X	3	10	W	S	Bm(7合目), AS 13.9(O), 41.3(D)
0903	0823	GW	3	10	W	S	AS 9.1(O), 32.5(D)
0903	0910	GW	3	10	W	S	Bm(7合目), AS 12.2(O), 37.6(D)
0903	1438	GW	3	10	W	S	Bm(6合目), AS 6.0(O), 36.6(D)
0903	1605	GW	3	12	W	S	Bm(6合目), AS 12.0(O), 58.0(D)
0903	2226	X	2	6	W	S	Bm(5合目), AS 12.9(O), 31.2(D)
0904	0228	X	X	X	X	S	Bm(4合目), AS 4.5(O), 22.6(D)
0904	0951	GW	3	8	SW	S	Bm(5合目), AS 5.8(O), 30.6(D)
0904	1454	GW	3	8	SW	S	Bm(4合目), AS 17.9(O), 40.5(D)
0905	0436	X	X	X	X	S	Bm(6合目), AS 4.3(O), 12.3(D)
0905	0523	GW	3	10	SW	S	Bm(6合目), AS 8.9(O), 28.7(D)
0905	1621	GW	3	10	SW	S	Bm(5合目), AS 8.9(O), 43.0(D)
0905	1955	X	1	3	SW	S	AS 10.3(D), 4.4(A)
0905	2022	X	2	8	SW	S	Bm(4合目), AS 12.9(O), 45.9(D)
0905	2051	X	2	5	SW	S	Bm(5合目), AS 5.3(O), 23.3(D)
0905	2313	X	2	6	SW	S	Bm(4合目), AS 15.1(O), 55.1(D)
0905	2335	X	2	6	SW	S	Bm(4合目), AS 8.8(O), 36.3(D)
0906	0547	GW	3	16	SW	S	Bm(4合目), AS 10.6(O), 32.0(D)
0906	0617	GW	3	12	SW	S	Bm(6合目), AS 5.8(O), 17.8(D)
0906	1738	GW	X	>3	SW	S	Bm(5合目), AS 11.1(O), 56.0(D)
0906	1819	GW	3	10	SW	S	Bm(6合目), AS 7.2(O), 45.6(D)
0907	1459	GW	3	>8	T	S	Bm(7合目), AS 8.7(O), 37.5(D)
0907	1617	GW	X	>5	T	S	Bm(6合目), AS 10.0(O), 55.9(D)
0907	2051	X	3	10	SW	S	Bm(5合目), AS 10.1(O), 70.7(D)
0907	2128	X	3	10	S	S	Bm(6合目), AS 3.2(O), 25.3(D)
0907	2145	X	3	10	S	S	Bm(6合目), AS 12.3(O), 79.2(D)
0908	1039	GW	3	10	S	S	Bm(5合目), AS 13.5(O), 73.0(D)
0908	1145	GW	3	13	S	S	Bm(5合目), AS 12.3(O), 72.5(D)

Sakurajima: September,2009





Date	Time	Col	Q	H(+100m)	Dir	Loc	Remarks
0909	0915	GW	3	10	SE	S	AS 4.9(O), 41.1(D)
0909	1402	GW	3	10	SE	S	AS 7.8(O), 66.7(D)
0909	1501	GW	3	12	SE	S	AS 5.4(O), 45.4(D)
0909	1621	GW	3	14	SE	S	AS 4.8(O), 39.4(D)
0910	0101	X	3	12	SE	S	Bm(5合目), AS 3.8(O), 27.2(D)
0910	0434	X	3	12	SE	S	Bm(6合目), AS 1.6(O), 10.1(D)
0911	1225	GW	3	10	E	S	Bm(6合目), AS 2.1(O), 21.5(D)
0913	1707	GW	3	18	T	S	Bm(5合目), AS 15.9(O), 57.9(D)
0914	2039	X	3	12	E	S	Bm(6合目), AS 11.5(D), 2.9(A)
0915	0328	X	X	>5	E	S	Bm(4合目), AS 3.6(O), 24.0(D)
0921	0231	X	3	10	NW	S	Bm(5合目), AS 2.5(O), 14.5(D)
0923	1235	X	X	X	X	S	AS 5.5(O), 34.2(D)
0923	1501	GW	3	10	SW	S	Bm(4合目), AS 11.2(O), 43.0(D)
0925	1045	GW	2	7	SW	S	Bm(5合目), AS 3.9(O), 16.9(D)
0925	1108	GW	3	12	SW	S	Bm(5合目), AS 7.2(O), 33.9(D)
0927	0139	X	3	12	T	S	Bm(5合目), AS 7.7(O), 32.8(D)
0927	1128	GW	X	>7	W	S	Bm(6合目), AS 10.0(O), 48.9(D)
0927	2204	X	2	8	NW	S	Bm(6合目), AS 5.9(O), 29.5(D)
0928	1721	GW	3	17	T	S	Bm(6合目), AS 2.4(O), 13.9(D)
0928	1906	X	3	16	T	S	Bm(4合目), AS 12.6(O), 54.4(D)
0929	0622	X	X	X	X	S	AS 8.0(O), 44.0(D)
0930	0552	GW	2	8	N	S	Bm(6合目), AS 5.1(O), 25.8(D)

## 臨時観測 平成21年(2009年)9月 Extra Observation in September,2009

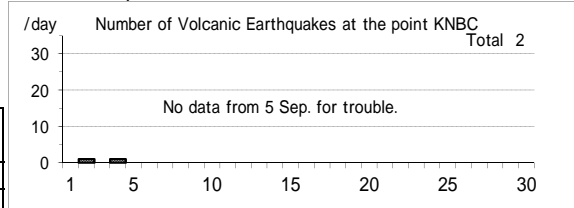
### (1)倶多楽

札幌火山監視・情報センターによる火山機動観測  
Mobile observation by the Sapporo VOIC  
Date: Since 15 Jul.,2004

震動観測(Seismic Observation)	月計 total	最大(起日) max (date)
Observation Point: KNBC		
火山性地震回数(Number of volcanic earthquakes)	2	1 (2,4)
火山性微動回数(Number of volcanic tremors)	0	0
微動継続時間(Duration of volcanic tremors) (min.)	-	-

Note:KNBC (N42°30.1' E141°7.4' H570m)

### Kuttara: September,2009



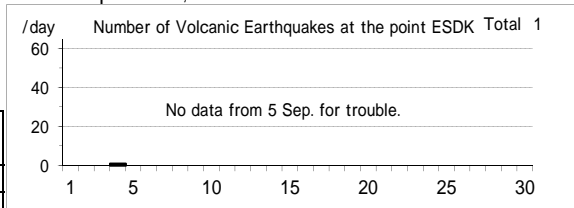
### (2)恵山

札幌火山監視・情報センターによる火山機動観測  
Mobile observation by the Sapporo VOIC  
Date: Since 24 Jul.,2005

震動観測(Seismic Observation)	月計 total	最大(起日) max (date)
Observation Point: ESDK		
火山性地震回数(Number of volcanic earthquakes)	1	1 (4)
火山性微動回数(Number of volcanic tremors)	0	0
微動継続時間(Duration of volcanic tremors) (min.)	-	-

Note: ESDK (N41°48.7' E141°9.7' H369m)

### Esan: September,2009



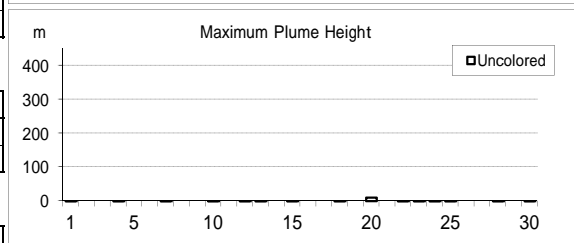
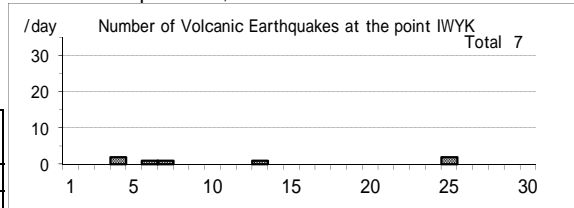
### (3)岩手山

仙台火山監視・情報センターによる火山機動観測  
Mobile observation by the Sendai VOIC  
Date: Since 4 Oct.,1995

震動観測(Seismic Observation)	月計 total	最大(起日) max (date)
Observation Point: IWYK		
火山性地震回数(Number of volcanic earthquakes)	7	2 (4,25)
火山性微動回数(Number of volcanic tremors)	0	0
微動継続時間(Duration of volcanic tremors) (min.)	-	-

Note:IWYK (N39°52.7' E140°57.6' H763m)

### Iwatesan: September,2009



遠望観測(Visual Observation)	最大(起日) max (date)
噴煙量(Quantity of plumes) (JMA's scale)	1 (20)
噴煙の高さ(Height of plumes) (m)	10 (20)

噴煙の色(Color of plumes)	W
他の火山現象(Other volcanic phenomena)	-

Note: Plumes were from the Kurokurayama Summit(LocationX), the Ojigokudani(Y-6)

Note: Uncolored:Plume color was White(W), Light white(LW).

Colored:Plume color was Grayish white(GW), Gray(G) and other.

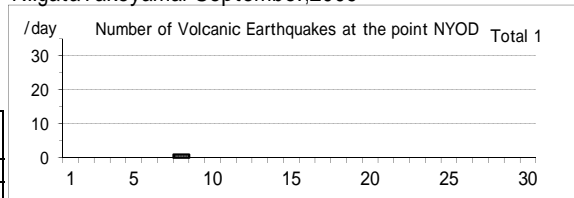
### (4)新潟焼山

気象庁本庁による火山機動観測  
Mobile observation by the headquarter of JMA  
Date: Since 1 Dec.,2005

震動観測(Seismic Observation)	月計 total	最大(起日) max (date)
Observation Point: NYOD		
火山性地震回数(Number of volcanic earthquakes)	1	1 (8)
火山性微動回数(Number of volcanic tremors)	0	0
微動継続時間(Duration of volcanic tremors) (min.)	-	-

Note: NYOD (N36°57.4' E138°2.3' H1,150m)

### NiigataYakeyama: September,2009



### (5)白山

気象庁本庁による火山機動観測

Mobile observation by the headquarter of JMA

Date: Since 1 Dec.,2005

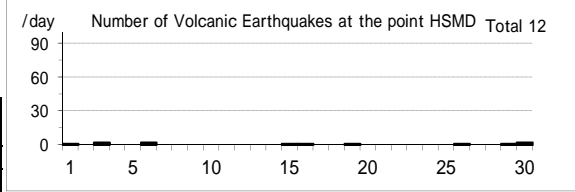
震動観測(Seismic Observation)

Observation Point: HSMD

	月計 total	最大(起日) max (date)
火山性地震回数(Number of volcanic earthquakes)	12	2 (3,6,30)
火山性微動回数(Number of volcanic tremors)	0	0
微動継続時間(Duration of volcanic tremors) (min.)	-	-

Note: HSMD (N36°8.8' E136°45.9' H2,345m)

### Hakusan: September,2009



### (6)富士山

気象庁本庁による火山機動観測

Mobile observation by the headquarter of JMA

Date: Since 18 Oct.,1987

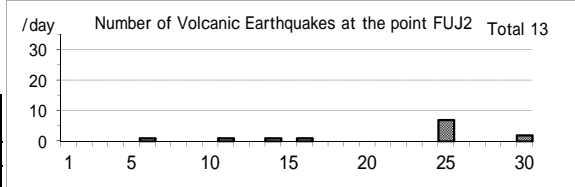
震動観測(Seismic Observation)

Observation Point: FUJ2

	月計 total	最大(起日) max (date)
火山性地震回数(Number of volcanic earthquakes)	13	7 (25)
火山性微動回数(Number of volcanic tremors)	0	0
微動継続時間(Duration of volcanic tremors) (min.)	-	-

Note: FUJ2 (N35°21.6' E138°43.6' H3,772m)

### Fujisan: September,2009



### (7)桜島

地磁気観測所鹿屋出張所による桜島の日降灰量観測

Extra observation of daily amounts of ash fall from Sakurajima by the Kanoya Satellite Observatory, the Magnetic Observatory, JMA

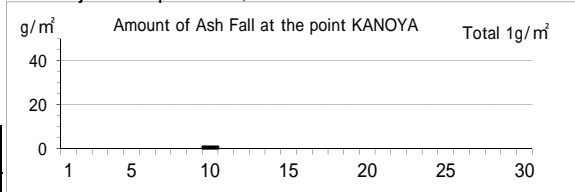
Date: daily (a.m. 0900)

遠望観測(Visual Observation)

Observation Point: KANOYA

	月計	最大(起日)
降灰量(Amount of ash fall) (g/m <sup>2</sup> )	1	1 (10)

### Sakurajima: September,2009



### (8)薩摩硫黄島

福岡火山監視・情報センター、鹿児島地方気象台による火山機動観測

Mobile observation by the Fukuoka VOIC and Kagoshima LMO

Date: Since 10 Sep.,1997

震動観測(Seismic Observation)

Observation Point: ST11

	月計 total	最大(起日) max (date)
火山性地震回数(Number of volcanic earthquakes)	2812	113 (3)
火山性微動回数(Number of volcanic tremors)	0	0
微動継続時間(Duration of volcanic tremors) (min.)	-	-

Note: ST11 (N30°47.3' E130°18.1' H380m)

遠望観測(Visual Observation)

最大(起日) max (date)

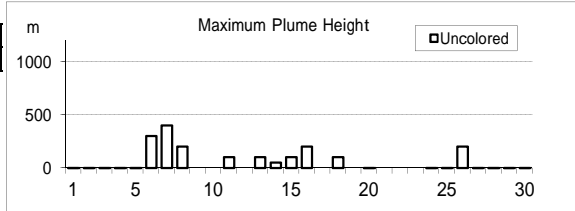
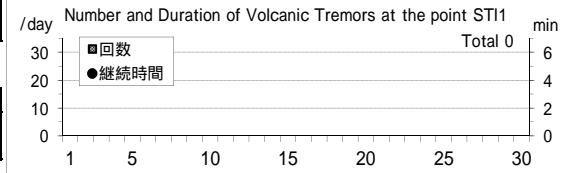
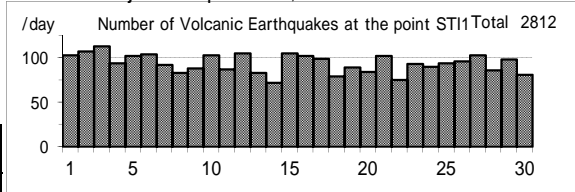
噴煙量(Quantity of plumes) (JMA's scale)	1 (abbr.)
噴煙の高さ(Height of plumes) (m)	400 (7)

噴煙の色(Color of plumes)	W
他の火山現象(Other volcanic phenomena)	-

Note: Uncolored:Plume color was White(W), Light white(LW).

Colored:Plume color was Grayish white(GW), Gray(G) and other.

### Satsuma-Iojima: September,2009



(9)口永良部島

福岡火山監視・情報センター、鹿児島地方気象台による火山機動観測  
 Mobile observation by the Fukuoka VOIC and Kagoshima LMO  
 Date: Since 11 Sep.,1999 (seismic), 10 Mar.,2004 (Visual)

震動観測(Seismic Observation)	月計 total	最大(起日) max (date)
Observation Point: KER1		
火山性地震回数(Number of volcanic earthquakes)	177	75 (27)
火山性微動回数(Number of volcanic tremors)	6	3 (28,30)
微動継続時間(Duration of volcanic tremors) (min.)	4	2 (30)

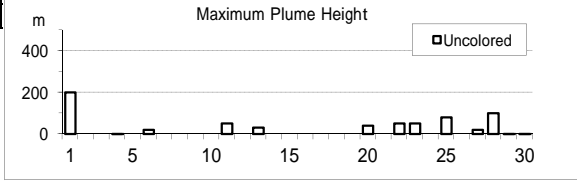
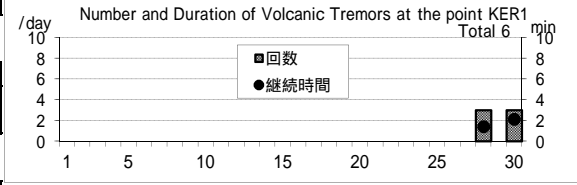
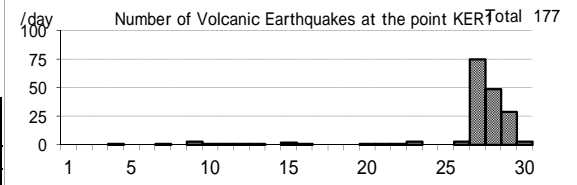
Note: KER1 (N30°26.9' E130°12.9' H566m)

遠望観測(Visual Observation)	最大(起日) max (date)
噴煙量(Quantity of plumes) (JMA's scale)	1 (abbr.)
噴煙の高さ(Height of plumes) (m)	200 (1)

噴煙の色(Color of plumes)	W
他の火山現象(Other volcanic phenomena)	-

Note: Uncolored:Plume color was White(W), Light white(LW).  
 Colored:Plume color was Grayish white(GW), Gray(G) and other.

Kuchinoerabujima: September,2009



(10)諏訪之瀬島

福岡火山監視・情報センター、鹿児島地方気象台による火山機動観測  
 Mobile observation by the Fukuoka VOIC and Kagoshima LMO  
 Date: Since 6 Jul.,2001

震動観測(Seismic Observation)	月計 total	最大(起日) max (date)
Observation Point: SWA1		
火山性地震回数(Number of volcanic earthquakes)	393	48 (6)
火山性微動回数(Number of volcanic tremors)	247	44 (13)
微動継続時間(Duration of volcanic tremors) (min.)	1328	185 (4)

Note: SWA1 (N29°37.7' E129°42.3' H450m)

\* Continuous volcanic tremors occurred intermittently in this month.  
 Number of volcanic tremors and duration are not including the continuous volcanic tremor.

遠望観測(Visual Observation)	月計 total	最大(起日) max (date)
爆発回数(Number of explosive eruptions)	13	4 (6)

	最大(起日) max (date)
噴煙量(Quantity of plumes) (JMA's scale)	1 (22,23,28)
噴煙の高さ(Height of plumes) (m)	200 (23,28)

噴煙の色(Color of plumes)	W
他の火山現象(Other volcanic phenomena)	-

Note: Uncolored:Plume color was White(W), Light white(LW).  
 Colored:Plume color was Grayish white(GW), Gray(G) and other.

Suwanosejima: September,2009

