

# 火山観測 Summary of Observations on Volcanoes

## 常時観測 平成21年(2009年)4月

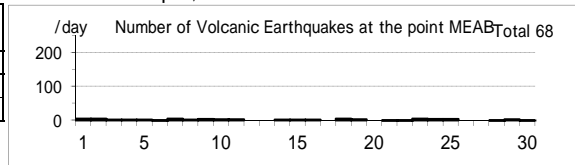
### Constant Observation in April,2009

#### (1) 雌阿寒岳

震動観測(Seismic Observation)	月計 total	最大(起日) max (date)
Observation Point: MEAB		
火山性地震回数(Number of volcanic earthquakes)	68	5 (abbr.)
火山性微動回数(Number of volcanic tremors)	0	0
微動継続時間(Duration of volcanic tremors) (min.)	-	-

Note: MEAB (N43 22.8' E143 58.7' H680m)

#### Meakandake: April,2009



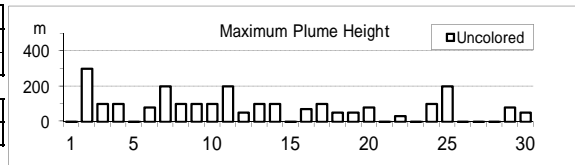
遠望観測(Visual Observation)	最大(起日) max (date)
噴煙量(Quantity of plumes) (JMA's scale)	1 (abbr.)
噴煙の高さ(Height of plumes) (m)	300 (2)

噴煙の色(Color of plumes)	W
他の火山現象(Other volcanic phenomena)	-

Note: Plumes were from the Pommachineshiri Summit Crater(Location T), the Nakamachineshiri Crater(U), the Akanuma Crater(M) and/or Pommachineshiri NW Fumaroles(N).

Note: Uncolored:Plume color was White(W).

Colored:Plume color was Light white(LW), Grayish white(GW), Gray(G) and other.

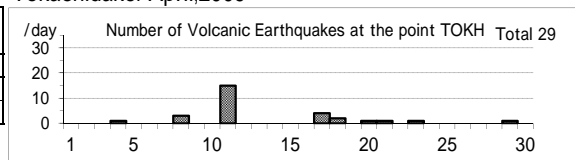


#### (2) 十勝岳

震動観測(Seismic Observation)	月計 total	最大(起日) max (date)
Observation Point: TOKH		
火山性地震回数(Number of volcanic earthquakes)	29	15 (11)
火山性微動回数(Number of volcanic tremors)	1	1 (11)
微動継続時間(Duration of volcanic tremors) (min.)	2	2 (11)

Note: TOKH (N43 26.0' E142 40.2' H1,355m)

#### Tokachidake: April,2009



遠望観測(Visual Observation)	最大(起日) max (date)
噴煙量(Quantity of plumes) (JMA's scale)	1 (abbr.)
噴煙の高さ(Height of plumes) (m)	300 (2)

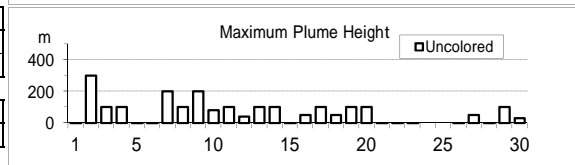
噴煙の色(Color of plumes)	W
他の火山現象(Other volcanic phenomena)	-

Note: Plumes were from the Taisho Crater(Location X),

the 62 crater Area(P,Q,Y), the Furikozawa Fumaroles (F) and/or the Kyufun Crater (Z).

Note: Uncolored:Plume color was White(W).

Colored:Plume color was Light white(LW), Grayish white(GW), Gray(G) and other.

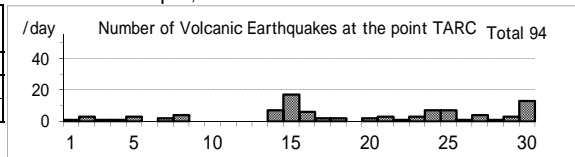


#### (3) 樽前山

震動観測(Seismic Observation)	月計 total	最大(起日) max (date)
Observation Point: TARC		
火山性地震回数(Number of volcanic earthquakes)	94	17 (15)
火山性微動回数(Number of volcanic tremors)	0	0
微動継続時間(Duration of volcanic tremors) (min.)	-	-

Note: TARC (N42 42.2' E141 22.6' H638m)

#### Tarumaesan: April,2009



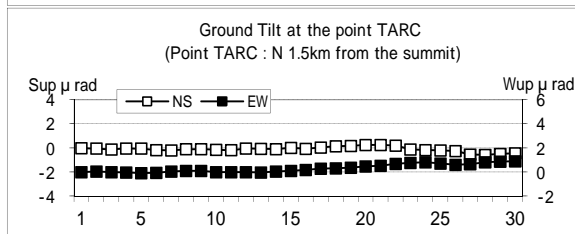
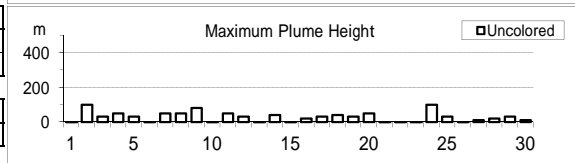
遠望観測(Visual Observation)	最大(起日) max (date)
噴煙量(Quantity of plumes) (JMA's scale)	1 (abbr.)
噴煙の高さ(Height of plumes) (m)	100 (2,24)

噴煙の色(Color of plumes)	W
他の火山現象(Other volcanic phenomena)	-

Note: Plumes were from the Summit Area(Location A, B and/or E).

Note: Uncolored:Plume color was White(W).

Colored:Plume color was Light white(LW), Grayish white(GW), Gray(G) and other.



(4)有珠山

震動観測(Seismic Observation)	月計 total	最大(起日) max (date)
Observation Point: USUA		
火山性地震回数(Number of volcanic earthquakes)	17	5 (5)
火山性微動回数(Number of volcanic tremors)	0	0
微動継続時間(Duration of volcanic tremors) (min.)	-	-

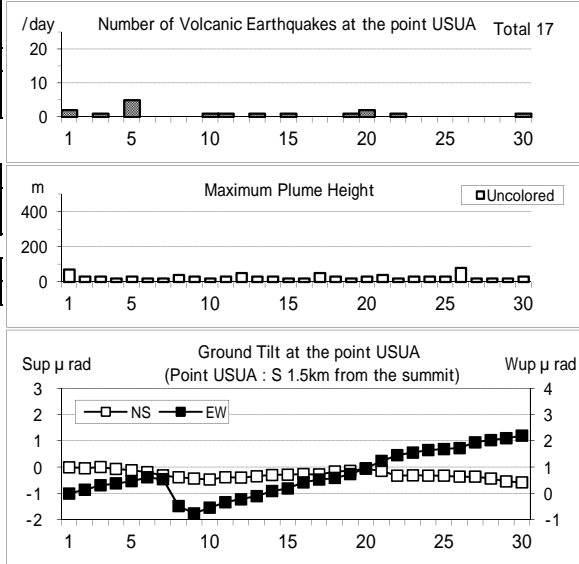
Note: USUA (N42°31.7' E140°50.2' H246m)

遠望観測(Visual Observation)	最大(起日) max (date)
噴煙量(Quantity of plumes) (JMA's scale)	1 (abbr.)
噴煙の高さ(Height of plumes) (m)	80 (26)
噴煙の色(Color of plumes)	W
他の火山現象(Other volcanic phenomena)	-

Note: Plumes were from the Summit Area of Usuzan(Location P) , Mt.showa-shinazan(Z), Nishi-yama vent group(N) and Konpira-yama vent group(K).

Note: Uncolored:Plume color was White(W).  
Colored:Plume color was Light white(LW), Grayish white(GW), Gray(G) and other.

Usuzan: April,2009



(5)北海道駒ヶ岳

震動観測(Seismic Observation)	月計 total	最大(起日) max (date)
Observation Point: KOMA		
火山性地震回数(Number of volcanic earthquakes)	0	0
火山性微動回数(Number of volcanic tremors)	0	0
微動継続時間(Duration of volcanic tremors) (min.)	-	-

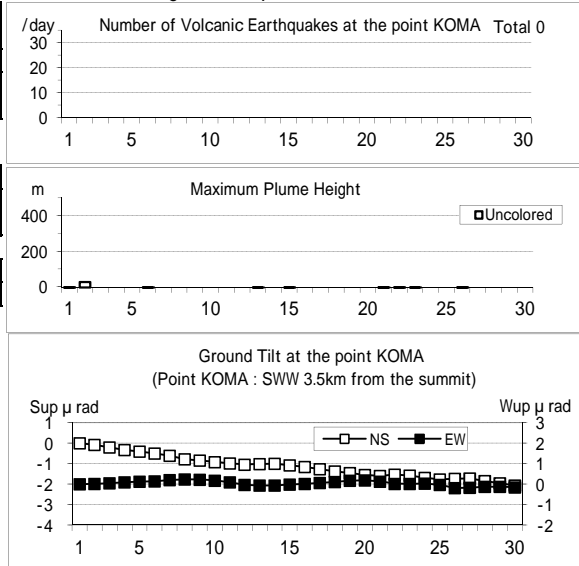
Note: KOMA (N42°03.2' E140°38.3' H265m)

遠望観測(Visual Observation)	最大(起日) max (date)
噴煙量(Quantity of plumes) (JMA's scale)	1 (2)
噴煙の高さ(Height of plumes) (m)	30 (2)
噴煙の色(Color of plumes)	W
他の火山現象(Other volcanic phenomena)	-

Note: Plumes were from the Showa-4 Crater(Location D1) and/or the 96 South Crater(D2).

Note: Uncolored:Plume color was White(W).  
Colored:Plume color was Light white(LW), Grayish white(GW), Gray(G) and other.

Hokkaido-Komagatake: April,2009



(6)吾妻山

震動観測(Seismic Observation)	月計 total	最大(起日) max (date)
Observation Point: AZUA		
火山性地震回数(Number of volcanic earthquakes)	21	3 (24,29)
火山性微動回数(Number of volcanic tremors)	0	0
微動継続時間(Duration of volcanic tremors) (min.)	-	-

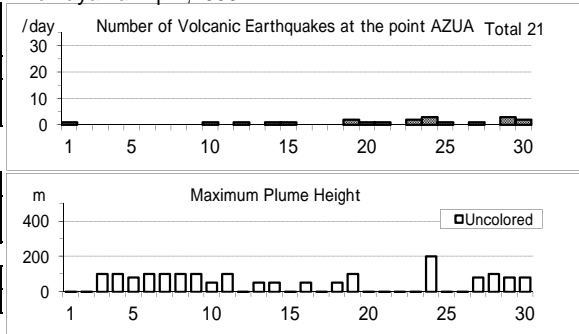
Note: AZUA (N37°43.3' E140°16.5' H1,295m)

遠望観測(Visual Observation)	最大(起日) max (date)
噴煙量(Quantity of plumes) (JMA's scale)	1 (abbr.)
噴煙の高さ(Height of plumes) (m)	200 (24)
噴煙の色(Color of plumes)	W
他の火山現象(Other volcanic phenomena)	-

Note: Plumes were from the Oana Crater

Note: Uncolored:Plume color was White(W).  
Colored:Plume color was Light white(LW), Grayish white(GW), Gray(G) and other.

Azumayama: April,2009



(7)安達太良山

震動観測(Seismic Observation)

	月計 total	最大(起日) max (date)
火山性地震回数(Number of volcanic earthquakes)	2	2 (28)
火山性微動回数(Number of volcanic tremors)	0	0
微動継続時間(Duration of volcanic tremors) (min.)	-	-

Note: ADTB(N37° 38.1 E140° 18.2 H1,320m)

遠望観測(Visual Observation)

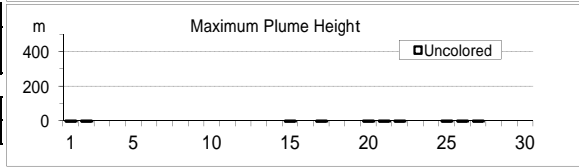
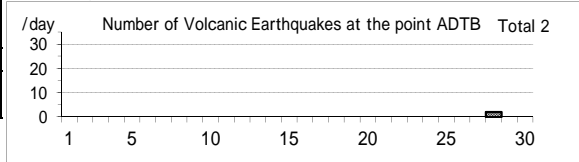
	最大(起日) max (date)
噴煙量(Quantity of plumes) (JMA's scale)	-
噴煙の高さ(Height of plumes) (m)	-
噴煙の色(Color of plumes)	-
他の火山現象(Other volcanic phenomena)	-

Note: Plumes were from the Numanodaira - SW area.

Note: Uncolored:Plume color was White(W).

Colored:Plume color was Light white(LW), Grayish white(GW), Gray(G) and other.

Adatarayama: April,2009



(8)磐梯山

震動観測(Seismic Observation)

	月計 total	最大(起日) max (date)
火山性地震回数(Number of volcanic earthquakes)	4	2 (23)
火山性微動回数(Number of volcanic tremors)	1	1 (12)
微動継続時間(Duration of volcanic tremors) (min.)	0	0 (12)

Note: BNDA (N37° 35.0 E140° 04.8 H1000m)

遠望観測(Visual Observation)

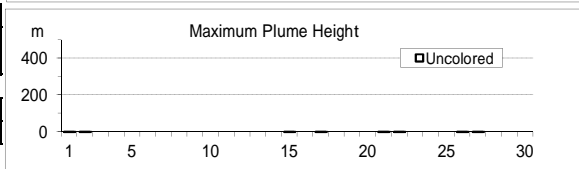
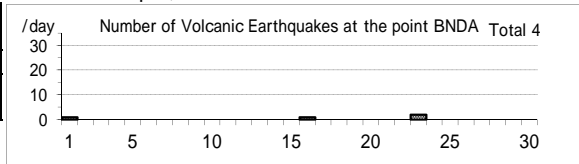
	最大(起日) max (date)
噴煙量(Quantity of plumes) (JMA's scale)	-
噴煙の高さ(Height of plumes) (m)	-
噴煙の色(Color of plumes)	-
他の火山現象(Other volcanic phenomena)	-

Note: Plumes were from the Fumarolic area in Crater wall.

Note: Uncolored:Plume color was White(W).

Colored:Plume color was Light white(LW), Grayish white(GW), Gray(G) and other.

Bandaisan: April,2009



(9)那須岳

震動観測(Seismic Observation)

	月計 total	最大(起日) max (date)
火山性地震回数(Number of volcanic earthquakes)	7	3 (28)
火山性微動回数(Number of volcanic tremors)	0	0
微動継続時間(Duration of volcanic tremors) (min.)	-	-

Note: NSUA (N37° 06.2' E139° 59.6' H1,083m)

遠望観測(Visual Observation)

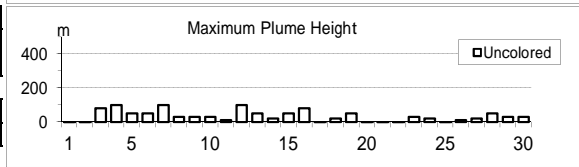
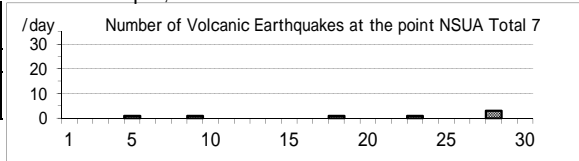
	最大(起日) max (date)
噴煙量(Quantity of plumes) (JMA's scale)	1 (abbr.)
噴煙の高さ(Height of plumes) (m)	100 (4,7,12)
噴煙の色(Color of plumes)	W
他の火山現象(Other volcanic phenomena)	-

Note: Plumes were from the west flank of Mt. Nasudake.

Note: Uncolored:Plume color was White(W).

Colored:Plume color was Light white(LW), Grayish white(GW), Gray(G) and other.

Nasudake: April,2009



(10)草津白根山

震動観測(Seismic Observation)

	月計 total	最大(起日) max (date)
火山性地震回数(Number of volcanic earthquakes)	26	4 (3,6)
火山性微動回数(Number of volcanic tremors)	0	0
微動継続時間(Duration of volcanic tremors) (min.)	-	-

Note: KSHA (N36° 38.9' E138° 32.7' H1,933m)

遠望観測(Visual Observation)

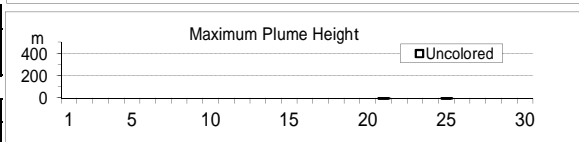
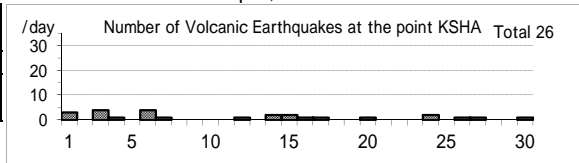
	最大(起日) max (date)
噴煙量(Quantity of plumes) (JMA's scale)	-
噴煙の高さ(Height of plumes) (m)	-
噴煙の色(Color of plumes)	-
他の火山現象(Other volcanic phenomena)	-

Note: Plumes were from the Yugama Crater and Fumaroles at northern side of Yugama Crater

Note: Uncolored:Plume color was White(W).

Colored:Plume color was Light white(LW), Grayish white(GW), Gray(G) and other.

Kusatsu-Shiranesan: April,2009



(11)浅間山

震動観測(Seismic Observation) Observation Point: ASMB	月計 total	最大(起日) max (date)
火山性地震回数(Number of volcanic earthquakes)	3614	204 (13)
火山性微動回数(Number of volcanic tremors)	87	10 (15)
微動継続時間(Duration of volcanic tremors) (min.)	111	35 (10)

Note: ASMB (N36°23.4' E138°31.1' H1,864m)

遠望観測(Visual Observation)	最大(起日) max (date)
噴煙量(Quantity of plumes) (JMA's scale)	3 (8)
噴煙の高さ(Height of plumes) (m)	800 (7)

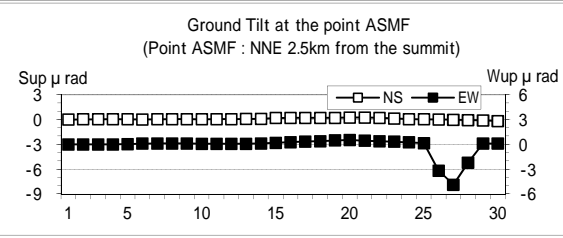
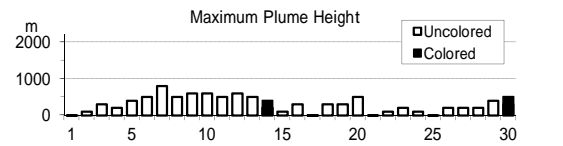
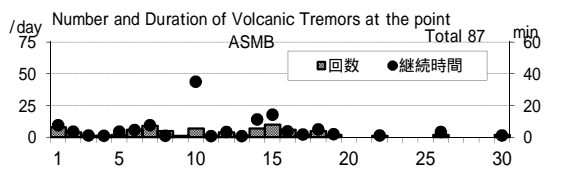
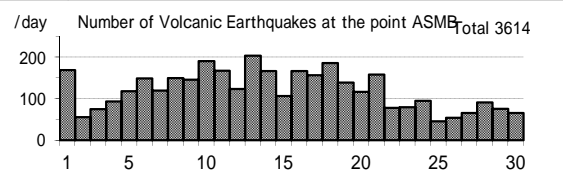
噴煙の色(Color of plumes)	W,GW
他の火山現象(Other volcanic phenomena)	-

Note: Plumes were from the Kamayama Crater(Location A).

Note: Uncolored:Plume color was White(W).

Colored:Plume color was Light white(LW), Grayish white(GW), Gray(G) and other.

Asamayama: April,2009



(12)御嶽山

震動観測(Seismic Observation) Observation Point: ONTA	月計 total	最大(起日) max (date)
火山性地震回数(Number of volcanic earthquakes)	13	5 (18)
火山性微動回数(Number of volcanic tremors)	0	0
微動継続時間(Duration of volcanic tremors) (min.)	-	-

Note: ONTA (N35°52.6' E137°29.7' H2,228m)

遠望観測(Visual Observation)	最大(起日) max (date)
噴煙量(Quantity of plumes) (JMA's scale)	1 (abbr.)
噴煙の高さ(Height of plumes) (m)	50 (abbr.)

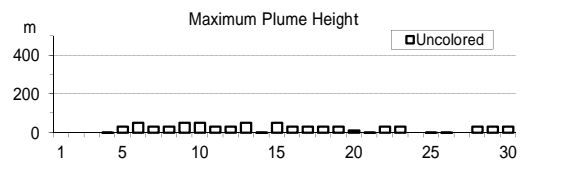
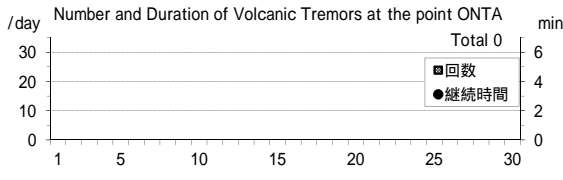
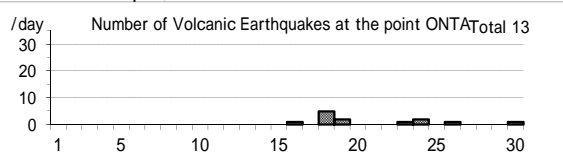
噴煙の色(Color of plumes)	W
他の火山現象(Other volcanic phenomena)	-

Note: Plumes were from the Otaki summit Crater (A) and/or S6

Note: Uncolored:Plume color was White(W).

Colored:Plume color was Light white(LW), Grayish white(GW), Gray(G) and other.

Ontakesan: April,2009



(13)伊豆東部火山群

震動観測(Seismic Observation) Observation Point: ITBA,Kamata2	月計 total	最大(起日) max (date)
火山性地震回数(Number of volcanic earthquakes)	20	5 (10)
火山性微動回数(Number of volcanic tremors)	0	0
微動継続時間(Duration of volcanic tremors) (min.)	-	-

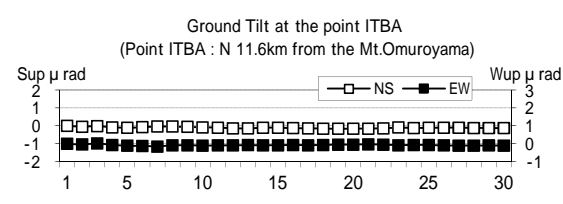
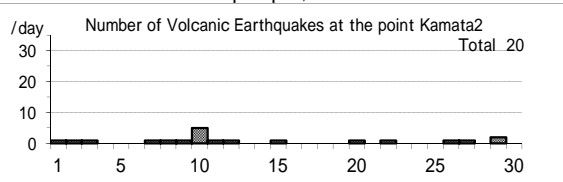
Note: ITBA (N35°00.5' E139°05.9' H12m)

Kamata2(N34°55.71' E139°03.65' H175m)

遠望観測(Visual Observation)	最大(起日) max (date)
噴煙量(Quantity of plumes) (JMA's scale)	-
噴煙の高さ(Height of plumes) (m)	-

噴煙の色(Color of plumes)	-
他の火山現象(Other volcanic phenomena)	-

Izu-Tobu Volcano Group: April,2009



(14)伊豆大島

震動観測(Seismic Observation) Observation Point: OSMA	月計 total	最大(起日) max (date)
火山性地震回数(Number of volcanic earthquakes)	38	4 (10)
火山性微動回数(Number of volcanic tremors)	0	0
微動継続時間(Duration of volcanic tremors) (min.)	-	-

Note: OSMA (N34 44.2' E139 23.2' H553m)

遠望観測(Visual Observation)	最大(起日) max (date)
噴煙量(Quantity of plumes) (JMA's scale)	1 (abbr.)
噴煙の高さ(Height of plumes) (m)	100 (19)

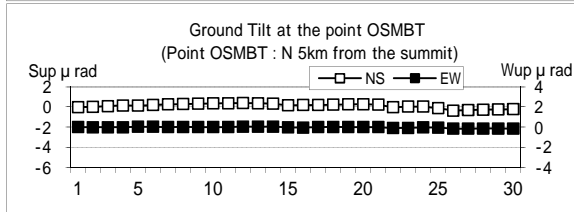
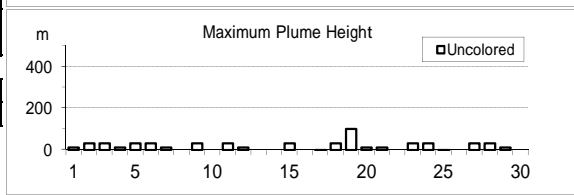
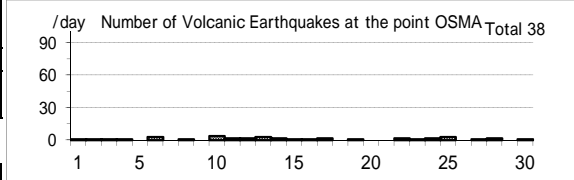
噴煙の色(Color of plumes)	W
他の火山現象(Other volcanic phenomena)	-

Note: Plumes were from the Miharayama Summit Crater(Location A), the Fumaroles at western side of Miharashinzan(A1), the Fumaroles near Kengamine(A2), the Fumaroles at eastern side of Miharashinzan(A3)

Note: Uncolored:Plume color was White(W).

Colored:Plume color was Light white(LW), Grayish white(GW), Gray(G) and other.

Izu-Oshima: April,2009



(15)三宅島

震動観測(Seismic Observation) Observation Point: MKJA	月計 total	最大(起日) max (date)
火山性地震回数(Number of volcanic earthquakes)	2096	144 (1)
火山性微動回数(Number of volcanic tremors)	5	3 (11)
微動継続時間(Duration of volcanic tremors) (min.)	10	5 (1)

Note: MKJA (N34 05.9' E139 32.0' H527m)

遠望観測(Visual Observation)	最大(起日) max (date)
噴煙量(Quantity of plumes) (JMA's scale)	2 (abbr.)
噴煙の高さ(Height of plumes) (m)	600 (1)

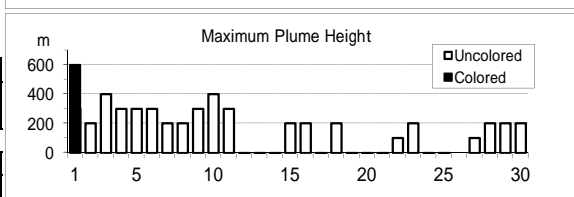
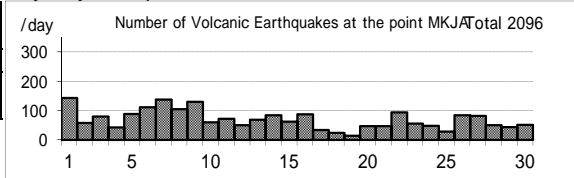
噴煙の色(Color of plumes)	W,GW
他の火山現象(Other volcanic phenomena)	-

Note: Plumes were from the Summit Crater.

Note: Uncolored:Plume color was White(W).

Colored:Plume color was Light white(LW), Grayish white(GW), Gray(G) and other.

Miyakejima: April,2009



(16)九重山

震動観測(Seismic Observation) Observation Point: KJUA	月計 total	最大(起日) max (date)
火山性地震回数(Number of volcanic earthquakes)	12	3 (24)
火山性微動回数(Number of volcanic tremors)	0	0
微動継続時間(Duration of volcanic tremors) (min.)	-	-

Note: KJUA (N33°06.2' E131°13.7' H1,280m)

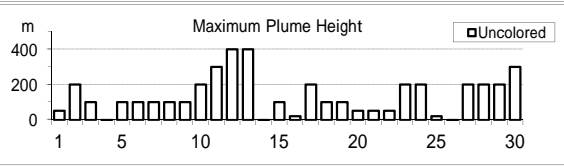
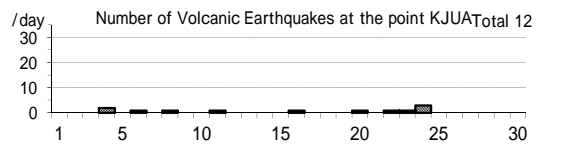
遠望観測(Visual Observation)	最大(起日) max (date)
噴煙量(Quantity of plumes) (JMA's scale)	2 (12)
噴煙の高さ(Height of plumes) (m)	400 (12,13)
噴煙の色(Color of plumes)	W
他の火山現象(Other volcanic phenomena)	-

Note: Plumes were from the east and/or north-east flank of Mt. Hossho (Location A,B,C or D).

Note: Uncolored:Plume color was White(W).

Colored:Plume color was Light white(LW), Grayish white(GW), Gray(G) and other.

Kujusan: April,2009



(17)阿蘇山

震動観測(Seismic Observation) Observation Point: ASOA	月計 total	最大(起日) max (date)
火山性地震回数(Number of volcanic earthquakes)	155	32 (6)
孤立型火山性微動回数 (Number of isolated volcanic tremors)	3345	150 (16)

Note: ASOA (N32°53.1' E131°04.7' H1,163m)

遠望観測(Visual Observation)	最大(起日) max (date)
噴煙量(Quantity of plumes) (JMA's scale)	2 (1,5,12)
噴煙の高さ(Height of plumes) (m)	700 (12)

噴煙の色(Color of plumes)	W
他の火山現象(Other volcanic phenomena)	-

Note: Plumes were from the Crater No.1 of Mt. Nakadake.

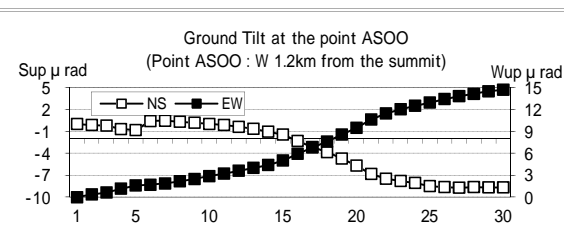
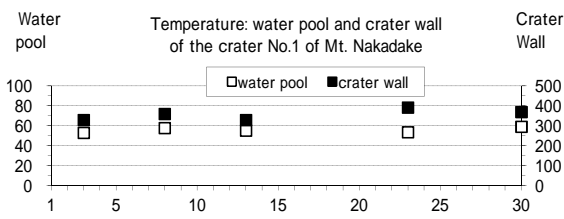
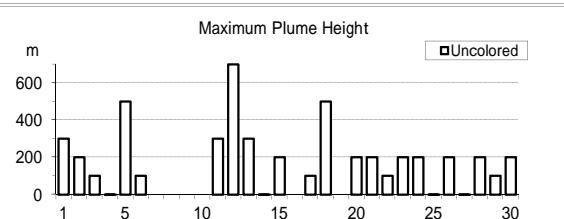
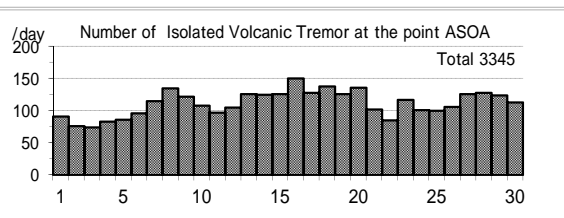
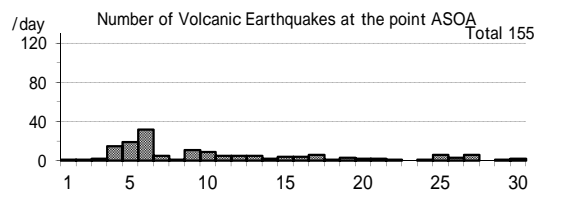
Note: Uncolored:Plume color was White(W).

Colored:Plume color was Light white(LW), Grayish white(GW), Gray(G) and other.

現地観測(Field Observation)	最高(起日) max (date)
	最低(起日) min (date)
火口内の湯だまりの表面温度 (Surface temperature on the water pool in the crater) ( )	59 (30)
火口壁の表面温度 (Surface temperature on the crater wall) ( )	329 (3)

Observation Point:the Crater No.1 of Mt. Nakadake

Asosan: April,2009



(18)雲仙岳

震動観測(Seismic Observation)  
Observation Point: UNZA

	月計 total	最大(起日) max (date)
火山性地震回数(Number of volcanic earthquakes)	6	2 (22)
火山性微動回数(Number of volcanic tremors)	0	0
微動継続時間(Duration of volcanic tremors) (min)	-	-

Note: UNZA (N32°44.1' E130°16.1' H769m)

遠望観測(Visual Observation)

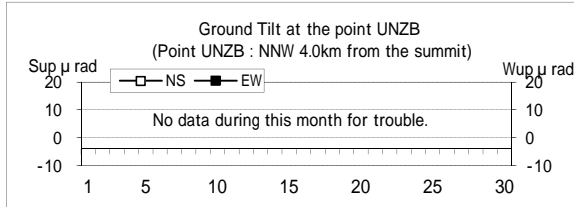
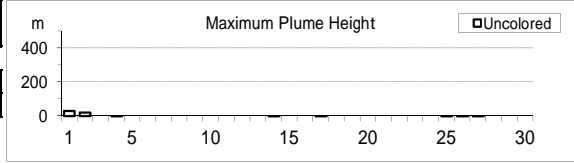
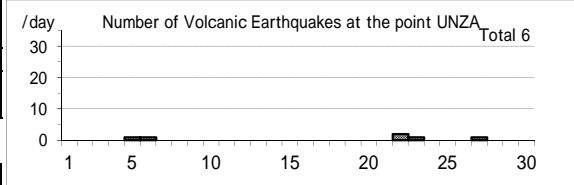
	最大(起日) max (date)
噴煙量(Quantity of plumes) (JMA's scale)	1 (1,2)
噴煙の高さ(Height of plumes) (m)	30 (1)
噴煙の色(Color of plumes)	W
他の火山現象(Other volcanic phenomena)	-

Note: Plumes were from the 10th Lava Dome(Location A10) and/or the 11th Lava Dome(A11).

Note: Uncolored:Plume color was White(W).

Colored:Plume color was Light white(LW), Grayish white(GW), Gray(G) and other.

Unzendake: April,2009



(19)霧島山

新燃岳 (Shinmoedake)

震動観測(Seismic Observation)  
Observation Point: KIRA

	月計 total	最大(起日) max (date)
火山性地震回数(Number of volcanic earthquakes)	29	11 (18)
火山性微動回数(Number of volcanic tremors)	0	0
微動継続時間(Duration of volcanic tremors) (min)	-	-

Note: KIRA (N31°54.0' E130°52.3' H1,035m)

遠望観測(Visual Observation)

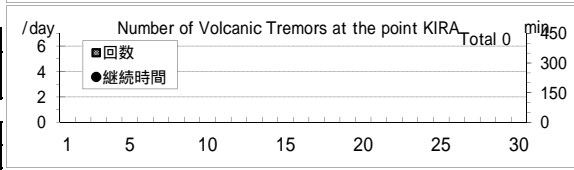
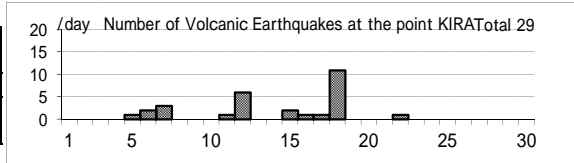
	最大(起日) max (date)
噴煙量(Quantity of plumes) (JMA's scale)	1 (abbr.)
噴煙の高さ(Height of plumes) (m)	500 (12)
噴煙の色(Color of plumes)	W
他の火山現象(Other volcanic phenomena)	-

Note: Plumes were from the Shinmoedake Crater

Note: Uncolored:Plume color was White(W).

Colored:Plume color was Light white(LW), Grayish white(GW), Gray(G) and other.

Kirishimayama: April,2009



御鉢(Ohachi)

震動観測(Seismic Observation)  
Observation Point: KTCM

	月計 total	最大(起日) max (date)
火山性地震回数(Number of volcanic earthquakes)	8	5 (15)
火山性微動回数(Number of volcanic tremors)	0	0
微動継続時間(Duration of volcanic tremors) (min)	-	-

Note: KTCM (N31°53.2' E130°55.2' H1,549m)

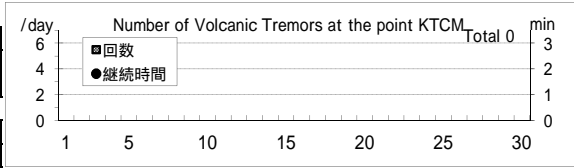
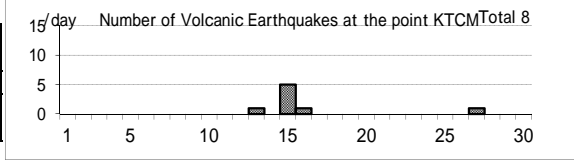
遠望観測(Visual Observation)

	最大(起日) max (date)
噴煙量(Quantity of plumes) (JMA's scale)	-
噴煙の高さ(Height of plumes) (m)	-
噴煙の色(Color of plumes)	-
他の火山現象(Other volcanic phenomena)	-

Note: Plumes were from the Ohachi Crater

Note: Uncolored:Plume color was White(W).

Colored:Plume color was Light white(LW), Grayish white(GW), Gray(G) and other.



(20)桜島

震動観測(Seismic Observation)

Observation Point: SKRB	月計 total	最大(起日) max (date)
火山性地震回数(Number of volcanic earthquakes)	482	73 (3)
火山性微動回数(Number of volcanic tremors)	143	35 (6)
微動継続時間(Duration of volcanic tremors) (min)	379	123 (6)

Note: SKRB (N31°35.6' E130°38.4' H455m)

遠望観測(Visual Observation)

	月計 total	最大(起日) max (date)
爆発回数(Number of explosive eruptions)	41	15 (3)
降灰量(Amount of ash fall) (g/m <sup>2</sup> )	252	243 (10)

A,B火口 (A,B crater)	最大(起日) max (date)
噴煙量(Quantity of plumes) (JMA's scale)	3 (3,7,8)
噴煙の高さ(Height of plumes) (m)	1400 (8)

昭和火口 (Showa crater)	最大(起日) max (date)
噴煙量(Quantity of plumes) (JMA's scale)	5 (9)
噴煙の高さ(Height of plumes) (m)	4000 (9)

噴煙の色(Color of plumes)	W,LW,GW
他の火山現象(Other volcanic phenomena)	Gl,As,Bm

Note: Plumes were from Mt. Minamidake A Crater(A), B Crater(B) and Showa Crater(S)

Note: Uncolored:Plume color was White(W).

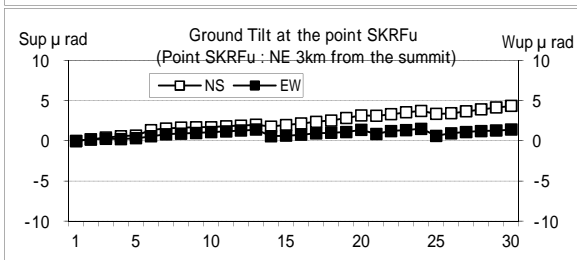
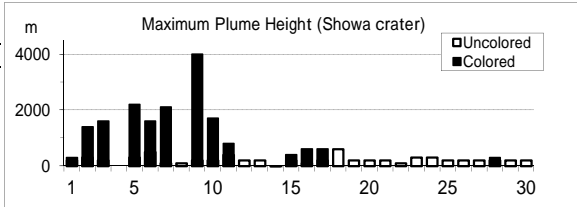
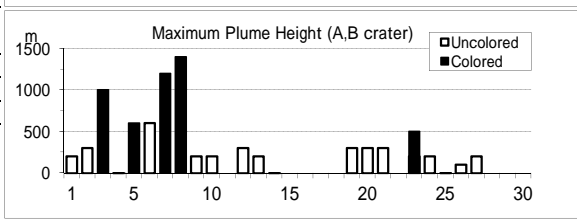
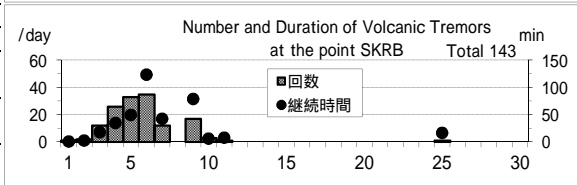
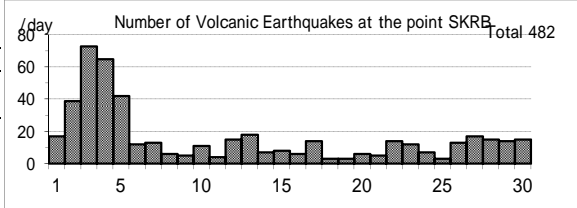
Colored:Plume color was Light white(LW), Grayish white(GW),

Gray(G) and other.

爆発時の遠望観測(Visual observation of explosion)

Date	Time	Col	Q	H(*100m)	Dir	Remarks
0402	0721	GW	2	3	S	Bm(7合目),AS 1.8(A),10.2(D)
0402	1504	GW	3	14	S	Bm(4合目),AS 10.2(O),88.8(D)
0402	1658	GW	3	12	T	Bm(5合目),AS 14.1(E),62.6(D)
0402	1713	GW	3	8	T	Bm(6合目),AS 9.0(E),41.6(D)
0402	1739	GW	2	3	S	Bm(6合目),AS 3.0(A),13.5(D)
0402	1832	GW	3	12	T	Bm(6合目),AS 8.8(O),42.9(D)
0402	1911	X	3	14	T	Bm(5合目),AS 3.8(O),22.3(D)
0403	0116	X	3	10	T	Bm(5合目),AS 1.0(O),10.4(D)
0403	0302	X	3	16	T	Bm(5合目),AS 1.3(O),10.7(D)
0403	0935	GW	3	12	E	Bm(6合目),AS 1.5(O),15.0(D)
0403	0944	GW	3	14	E	AS 1.3(O),10.9(D)
0403	1009	GW	3	12	E	Bm(5合目),AS 4.1(O),32.2(D)
0403	1118	GW	3	12	E	Bm(4合目),AS 7.3(O),67.1(D)
0403	1323	GW	3	12	E	Bm(4合目),AS 4.0(O),34.5(D)
0403	1600	GW	3	12	E	Bm(5合目),AS 3.7(O),29.3(D)
0403	1837	GW	3	12	SE	Bm(7合目),AS 5.4(O),47.3(D)
0403	1941	X	3	10	SE	Bm(7合目),AS 1.8(O),15.3(D)
0403	1959	X	3	12	SE	Bm(5合目),AS 1.6(O),14.0(D)
0403	2045	X	3	10	E	Bm(7合目),AS 2.5(O),27.5(D)
0403	2117	X	3	10	E	Bm(5合目),AS 1.5(O),21.6(D)
0403	2140	X	3	12	E	Bm(5合目),AS 3.7(O),37.8(D)
0403	2210	X	3	10	E	Bm(6合目),AS 1.5(O),19.3(D)
0404	0047	X	3	10	E	Bm(6合目),AS 2.7(O),28.1(D)
0404	0347	X	X	X	X	Bm(5合目),AS 6.5(O),104.6(D)
0404	0557	X	X	X	X	AS 1.3(O),23.5(D)
0404	0837	X	X	X	X	AS 0.5(O),11.1(D)
0404	1409	X	X	X	X	AS 2.5(O),60.5(D)
0404	1525	X	X	X	X	AS 2.6(O),52.2(D)
0404	1641	X	X	X	X	AS 6.1(A),53.9(D)
0404	1723	X	X	X	X	AS 1.4(O),48.3(D)
0404	1746	X	X	X	X	AS 1.1(O),19.0(D)
0404	2015	X	X	X	X	AS 1.5(O),15.9(D)
0405	0348	X	3	15	E	AS 8.6(O),82.6(D)
0405	0447	X	3	12	SE	Bm(5合目),AS 5.6(O),53.1(D)
0405	0535	X	3	15	SE	Bm(5合目),AS 4.2(O),27.6(D)
0405	0756	GW	3	9	SE	AS 2.7(O),11.8(D)
0405	1242	GW	3	10	SE	Bm(7合目),AS 2.0(O),10.8(D)
0405	1424	GW	3	13	SE	AS 8.6(O),50.2(D)
0405	1827	GW	3	15	SE	Bm(5合目),AS 3.7(O),18.2(D)
0405	2045	GW	3	16	SE	Bm(4合目),AS 2.2(O),12.0(D)
0409	1531	GW	5	>40	SW	Bm(4合目),AS 4.3(O),24.6(D)

Sakurajima: April,2009





## 臨時観測 平成21年(2009年)4月 Extra Observation in April,2009

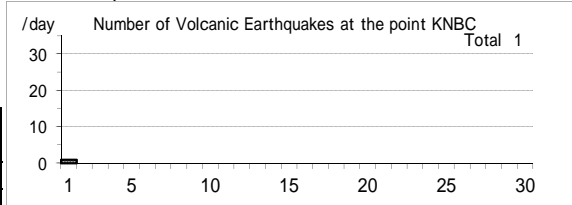
### (1)倶多楽

札幌火山監視・情報センターによる火山機動観測  
Mobile observation by the Sapporo VOIC  
Date: Since 15 Jul.,2004

震動観測(Seismic Observation)	月計 total	最大(起日) max (date)
Observation Point: KNBC		
火山性地震回数(Number of volcanic earthquakes)	1	1 (1)
火山性微動回数(Number of volcanic tremors)	0	0
微動継続時間(Duration of volcanic tremors) (min.)	-	-

Note:KNBC (N42°30.1' E141°7.4' H570m)

### Kuttara: April,2009



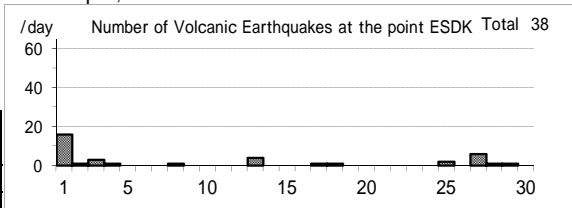
### (2)恵山

札幌火山監視・情報センターによる火山機動観測  
Mobile observation by the Sapporo VOIC  
Date: Since 24 Jul.,2005

震動観測(Seismic Observation)	月計 total	最大(起日) max (date)
Observation Point: ESDK		
火山性地震回数(Number of volcanic earthquakes)	38	16 (1)
火山性微動回数(Number of volcanic tremors)	0	0
微動継続時間(Duration of volcanic tremors) (min.)	-	-

Note: ESDK (N41°48.7' E141°9.7' H369m)

### Esan: April,2009



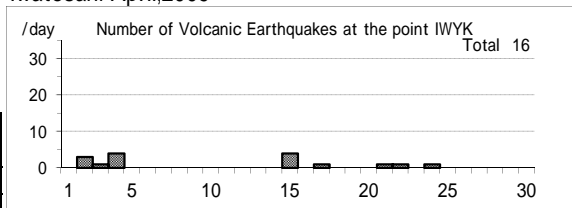
### (3)岩手山

仙台火山監視・情報センターによる火山機動観測  
Mobile observation by the Sendai VOIC  
Date: Since 4 Oct.,1995

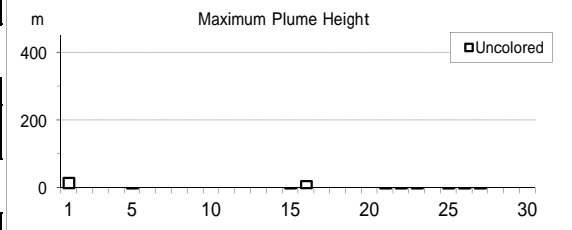
震動観測(Seismic Observation)	月計 total	最大(起日) max (date)
Observation Point: IWYK		
火山性地震回数(Number of volcanic earthquakes)	16	4 (4,15)
火山性微動回数(Number of volcanic tremors)	0	0
微動継続時間(Duration of volcanic tremors) (min.)	-	-

Note:IWYK (N39°52.7' E140°57.6' H763m)

### Iwatesan: April,2009



遠望観測(Visual Observation)	最大(起日) max (date)
噴煙量(Quantity of plumes) (JMA's scale)	1 (1,16)
噴煙の高さ(Height of plumes) (m)	30 (1)



噴煙の色(Color of plumes)	W
他の火山現象(Other volcanic phenomena)	-

Note: Plumes were from the Kurokurayama Summit(LocationX), the Ojigokudani(Y-6)

Note: Uncolored:Plume color was White(W), Light white(LW).

Colored:Plume color was Grayish white(GW), Gray(G) and other.

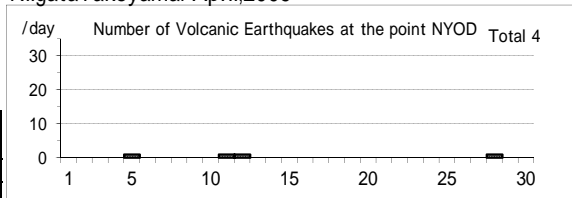
### (4)新潟焼山

気象庁本庁による火山機動観測  
Mobile observation by the headquarter of JMA  
Date: Since 1 Dec.,2005

震動観測(Seismic Observation)	月計 total	最大(起日) max (date)
Observation Point: NYOD		
火山性地震回数(Number of volcanic earthquakes)	4	1 (abbr.)
火山性微動回数(Number of volcanic tremors)	0	0
微動継続時間(Duration of volcanic tremors) (min.)	-	-

Note: NYOD (N36°57.4' E138°2.3' H1,150m)

### NiigataYakeyama: April,2009



(5)白山

気象庁本庁による火山機動観測

Mobile observation by the headquarter of JMA

Date: Since 1 Dec.,2005

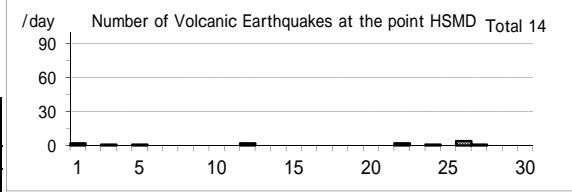
震動観測(Seismic Observation)

Observation Point: HSMD

	月計 total	最大(起日) max (date)
火山性地震回数(Number of volcanic earthquakes)	14	4 (26)
火山性微動回数(Number of volcanic tremors)	0	0
微動継続時間(Duration of volcanic tremors) (min.)	-	-

Note: HSMD (N36°8.8' E136°45.9' H2,345m)

Hakusan: April,2009



(6)富士山

気象庁本庁による火山機動観測

Mobile observation by the headquarter of JMA

Date: Since 18 Oct.,1987

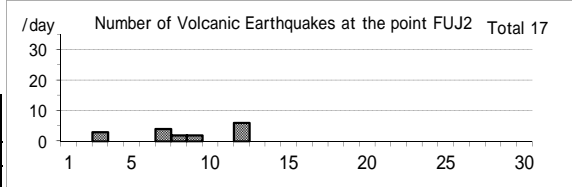
震動観測(Seismic Observation)

Observation Point: FUJ2

	月計 total	最大(起日) max (date)
火山性地震回数(Number of volcanic earthquakes)	17	6 (12)
火山性微動回数(Number of volcanic tremors)	0	0
微動継続時間(Duration of volcanic tremors) (min.)	-	-

Note: FUJ2 (N35°21.6' E138°43.6' H3,772m)

Fujisan: April,2009



(7)桜島

地磁気観測所鹿屋出張所による桜島の日降灰量観測

Extra observation of daily amounts of ash fall from Sakurajima by the Kanoya Satellite Observatory, the Magnetic Observatory, JMA

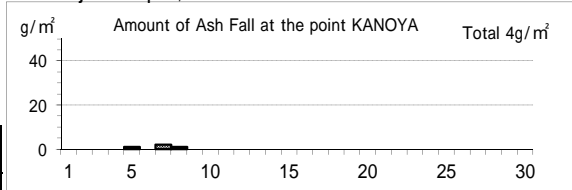
Date: daily (a.m. 0900)

遠望観測(Visual Observation)

Observation Point: KANOYA

	月計 total	最大(起日) max (date)
降灰量(Amount of ash fall) (g/m <sup>2</sup> )	4	2 (7)

Sakurajima: April,2009



(8)薩摩硫黄島

福岡火山監視・情報センター、鹿児島地方気象台による火山機動観測

Mobile observation by the Fukuoka VOIC and Kagoshima LMO

Date: Since 10 Sep.,1997

震動観測(Seismic Observation)

Observation Point: ST11

	月計 total	最大(起日) max (date)
火山性地震回数(Number of volcanic earthquakes)	1630	72 (23)
火山性微動回数(Number of volcanic tremors)	0	0
微動継続時間(Duration of volcanic tremors) (min.)	0	0

Note: ST11 (N30°47.3' E130°18.1' H380m)

遠望観測(Visual Observation)

最大(起日) max (date)

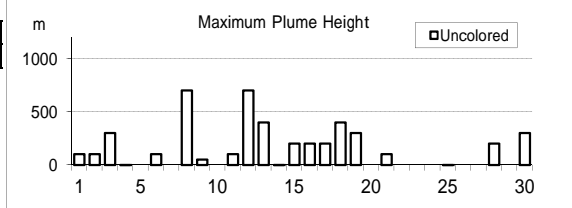
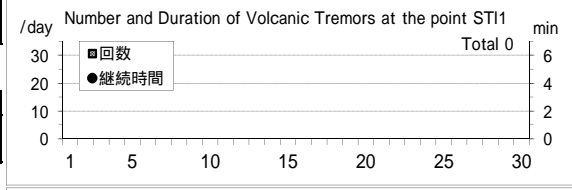
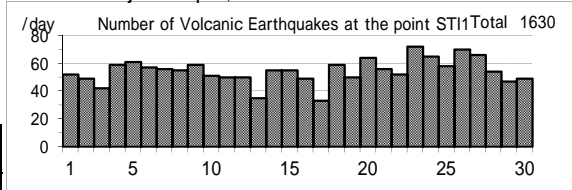
噴煙量(Quantity of plumes) (JMA's scale)	2 (8,12)
噴煙の高さ(Height of plumes) (m)	700 (8,12)

噴煙の色(Color of plumes)	W
他の火山現象(Other volcanic phenomena)	-

Note: Uncolored:Plume color was White(W), Light white(LW).

Colored:Plume color was Grayish white(GW), Gray(G) and other.

Satsuma-Iojima: April,2009



(9)口永良部島

福岡火山監視・情報センター、鹿児島地方気象台による火山機動観測  
 Mobile observation by the Fukuoka VOIC and Kagoshima LMO  
 Date: Since 11 Sep.,1999 (seismic), 10 Mar.,2004 (Visual)

震動観測(Seismic Observation)	月計 total	最大(起日) max (date)
Observation Point: KER1		
火山性地震回数(Number of volcanic earthquakes)	124	13 (10)
火山性微動回数(Number of volcanic tremors)	67	5 (16,17)
微動継続時間(Duration of volcanic tremors) (min.)	110	11 (16)

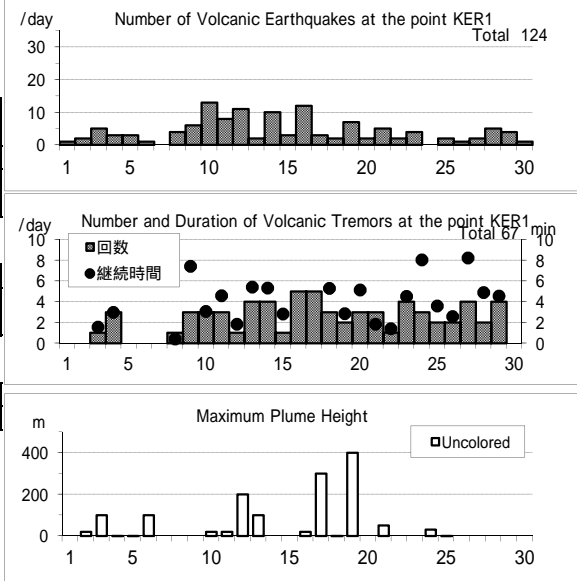
Note: KER1 (N30°26.9' E130°12.9' H566m)

遠望観測(Visual Observation)	最大(起日) max (date)
噴煙量(Quantity of plumes) (JMA's scale)	1 (abbr.)
噴煙の高さ(Height of plumes) (m)	400 (19)

噴煙の色(Color of plumes)	W
他の火山現象(Other volcanic phenomena)	-

Note: Uncolored:Plume color was White(W), Light white(LW).  
 Colored:Plume color was Grayish white(GW), Gray(G) and other.

Kuchinoerabujima: April,2009



(10)諏訪之瀬島

福岡火山監視・情報センター、鹿児島地方気象台による火山機動観測  
 Mobile observation by the Fukuoka VOIC and Kagoshima LMO  
 Date: Since 6 Jul.,2001

震動観測(Seismic Observation)	月計 total	最大(起日) max (date)
Observation Point: SWA1		
火山性地震回数(Number of volcanic earthquakes)	399	57 (3)
火山性微動回数(Number of volcanic tremors)*	124	15 (6,16)
微動継続時間(Duration of volcanic tremors) (min.)	*	*

Note: SWA1 (N29°37.7' E129°42.3' H450m)

\* Continuous volcanic tremors occurred intermittently in this month.  
 Number of volcanic tremors is not including the continuous volcanic tremor.

遠望観測(Visual Observation)	月計 total	最大(起日) max (date)
爆発回数(Number of explosive eruptions)	40	15 (3)

	最大(起日) max (date)
噴煙量(Quantity of plumes) (JMA's scale)	3 (28)
噴煙の高さ(Height of plumes) (m)	1000 (28,29)

噴煙の色(Color of plumes)	W,GW
他の火山現象(Other volcanic phenomena)	-

Note: Uncolored:Plume color was White(W), Light white(LW).  
 Colored:Plume color was Grayish white(GW), Gray(G) and other.

Suwanosejima: April,2009

