

火山観測 Summary of Observations on Volcanoes

常時観測 平成20年(2008年)11月

Constant Observation in November,2008

(1) 雌阿寒岳

震動観測(Seismic Observation)

	月計 total	最大(起日) max (date)
火山性地震回数(Number of volcanic earthquakes)	795	241 (10)
火山性微動回数(Number of volcanic tremors)	14	4 (17,28)
微動継続時間(Duration of volcanic tremors) (min.)	4022	2209 (18)

Note: MEAB (N43 22.8' E143 58.7' H680m)

遠望観測(Visual Observation)

	最大(起日) max (date)
噴煙量(Quantity of plumes) (JMA's scale)	2 (28)
噴煙の高さ(Height of plumes) (m)	500 (28)

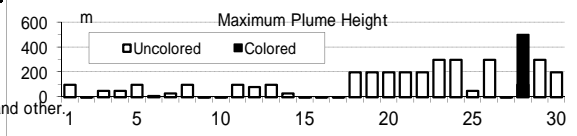
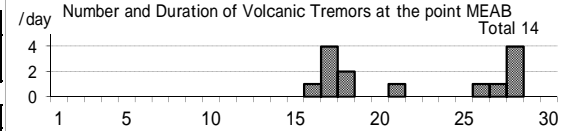
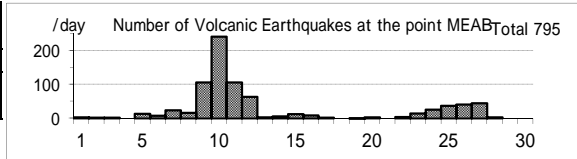
噴煙の色(Color of plumes)	W,LW,GW
他の火山現象(Other volcanic phenomena)	-

Note: Plumes were from the Pommachineshiri Summit Crater(Location T), the Nakamachineshiri Crater(U), the Akanuma Crater(M) and/or Pommachineshiri NW Fumaroles(N).

Note: Uncolored:Plume color was White(W).

Colored:Plume color was Light white(LW), Grayish white(GW), Gray(G) and other.

Meakandake: November,2008



(2) 十勝岳

震動観測(Seismic Observation)

	月計 total	最大(起日) max (date)
火山性地震回数(Number of volcanic earthquakes)	13	5 (11)
火山性微動回数(Number of volcanic tremors)	0	0
微動継続時間(Duration of volcanic tremors) (min.)	-	-

Note: TOKH (N43 26.0' E142 40.2' H1,355m)

遠望観測(Visual Observation)

	最大(起日) max (date)
噴煙量(Quantity of plumes) (JMA's scale)	1 (abbr.)
噴煙の高さ(Height of plumes) (m)	100 (abbr.)

噴煙の色(Color of plumes)	W
他の火山現象(Other volcanic phenomena)	-

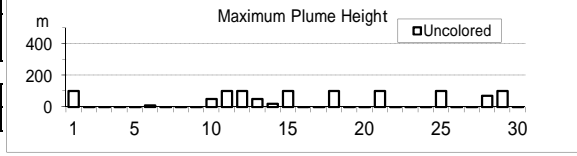
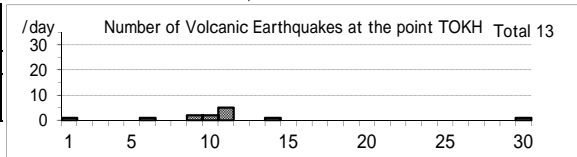
Note: Plumes were from the Taisho Crater(Location X),

the 62 crater Area(P,Q,Y), the Furikozawa Fumaroles (F) and/or the Kyufun Crater (Z).

Note: Uncolored:Plume color was White(W).

Colored:Plume color was Light white(LW), Grayish white(GW), Gray(G) and other.

Tokachidake: November,2008



(3) 樽前山

震動観測(Seismic Observation)

	月計 total	最大(起日) max (date)
火山性地震回数(Number of volcanic earthquakes)	37	4 (1,4,6)
火山性微動回数(Number of volcanic tremors)	0	0
微動継続時間(Duration of volcanic tremors) (min.)	-	-

Note: TARC (N42 42.2' E141 22.6' H638m)

遠望観測(Visual Observation)

	最大(起日) max (date)
噴煙量(Quantity of plumes) (JMA's scale)	1 (abbr.)
噴煙の高さ(Height of plumes) (m)	100 (17,19,26)

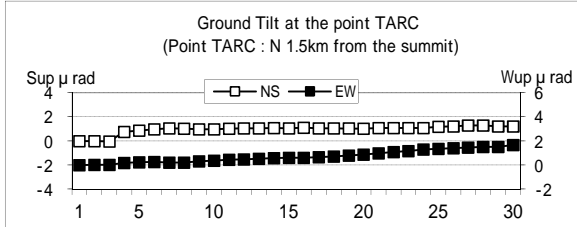
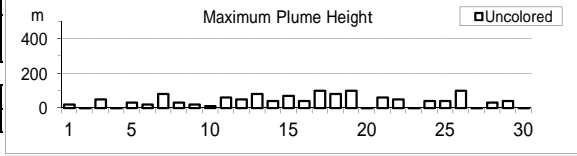
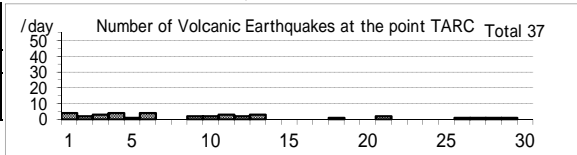
噴煙の色(Color of plumes)	W
他の火山現象(Other volcanic phenomena)	-

Note: Plumes were from the Summit Area(Location A, B and/or E).

Note: Uncolored:Plume color was White(W).

Colored:Plume color was Light white(LW), Grayish white(GW), Gray(G) and other.

Tarumaesan: November,2008



(4)有珠山

震動観測(Seismic Observation)	月計 total	最大(起日) max (date)
Observation Point: USUA		
火山性地震回数(Number of volcanic earthquakes)	26	3 (13,21)
火山性微動回数(Number of volcanic tremors)	0	0
微動継続時間(Duration of volcanic tremors) (min.)	-	-

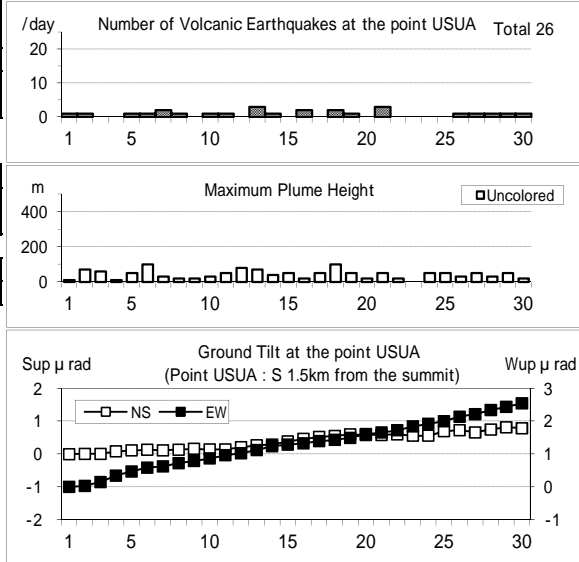
Note: USUA (N42°31.7' E140°50.2' H246m)

遠望観測(Visual Observation)	最大(起日) max (date)
噴煙量(Quantity of plumes) (JMA's scale)	1 (abbr.)
噴煙の高さ(Height of plumes) (m)	100 (6,18)
噴煙の色(Color of plumes)	W
他の火山現象(Other volcanic phenomena)	-

Note: Plumes were from the Summit Area of Usuzan(Location P) , Mt.showa-shinazan(Z), Nishi-yama vent group(N) and Konpira-yama vent group(K).

Note: Uncolored:Plume color was White(W).
Colored:Plume color was Light white(LW), Grayish white(GW), Gray(G) and other.

Usuzan: November,2008



(5)北海道駒ヶ岳

震動観測(Seismic Observation)	月計 total	最大(起日) max (date)
Observation Point: KOMA		
火山性地震回数(Number of volcanic earthquakes)	1	1 (28)
火山性微動回数(Number of volcanic tremors)	0	0
微動継続時間(Duration of volcanic tremors) (min.)	-	-

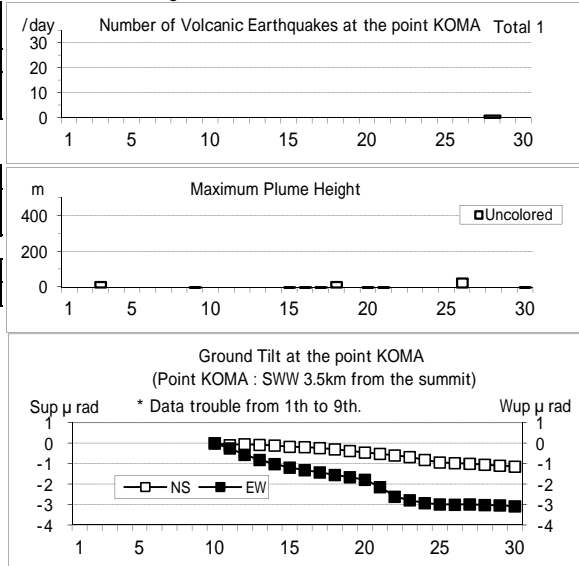
Note: KOMA (N42°03.2' E140°38.3' H265m)

遠望観測(Visual Observation)	最大(起日) max (date)
噴煙量(Quantity of plumes) (JMA's scale)	1 (3,18,26)
噴煙の高さ(Height of plumes) (m)	50 (26)
噴煙の色(Color of plumes)	W
他の火山現象(Other volcanic phenomena)	-

Note: Plumes were from the Showa-4 Crater(Location D1) and/or the 96 South Crater(D2).

Note: Uncolored:Plume color was White(W).
Colored:Plume color was Light white(LW), Grayish white(GW), Gray(G) and other.

Hokkaido-Komagatake: November,2008



(6)吾妻山

震動観測(Seismic Observation)	月計 total	最大(起日) max (date)
Observation Point: AZUA		
火山性地震回数(Number of volcanic earthquakes)	93	8 (16,29)
火山性微動回数(Number of volcanic tremors)	0	0
微動継続時間(Duration of volcanic tremors) (min.)	-	-

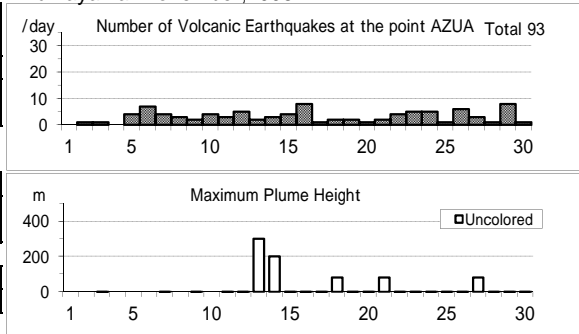
Note: AZUA (N37°43.3' E140°16.5' H1,295m)

遠望観測(Visual Observation)	最大(起日) max (date)
噴煙量(Quantity of plumes) (JMA's scale)	1 (abbr.)
噴煙の高さ(Height of plumes) (m)	300 (13)
噴煙の色(Color of plumes)	W
他の火山現象(Other volcanic phenomena)	-

Note: Plumes were from the Oana Crater

Note: Uncolored:Plume color was White(W).
Colored:Plume color was Light white(LW), Grayish white(GW), Gray(G) and other.

Azumayama: November,2008



(7)安達太良山

震動観測(Seismic Observation)

	月計 total	最大(起日) max (date)
火山性地震回数(Number of volcanic earthquakes)	1	1 (25)
火山性微動回数(Number of volcanic tremors)	0	0
微動継続時間(Duration of volcanic tremors) (min.)	-	-

Note: ADTB(N37° 38.1 E140° 18.2 H1,320m)

遠望観測(Visual Observation)

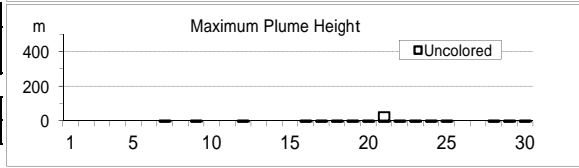
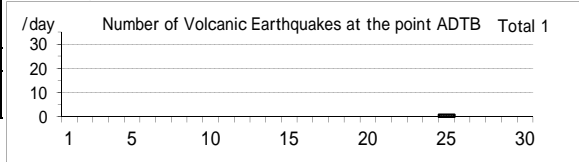
	最大(起日) max (date)
噴煙量(Quantity of plumes) (JMA's scale)	1 (21)
噴煙の高さ(Height of plumes) (m)	50 (21)
噴煙の色(Color of plumes)	W
他の火山現象(Other volcanic phenomena)	-

Note: Plumes were from the Numanodaira - SW area.

Note: Uncolored:Plume color was White(W).

Colored:Plume color was Light white(LW), Grayish white(GW), Gray(G) and other.

Adatarayama: November,2008



(8)磐梯山

震動観測(Seismic Observation)

	月計 total	最大(起日) max (date)
火山性地震回数(Number of volcanic earthquakes)	23	16 (16)
火山性微動回数(Number of volcanic tremors)	0	0
微動継続時間(Duration of volcanic tremors) (min.)	-	-

Note: BNDA (N37° 35.0 E140° 04.8 H1000m)

遠望観測(Visual Observation)

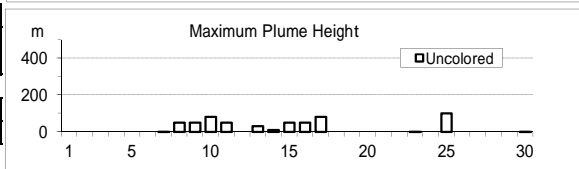
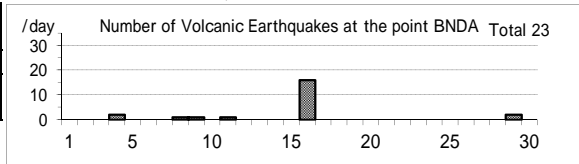
	最大(起日) max (date)
噴煙量(Quantity of plumes) (JMA's scale)	1 (abbr.)
噴煙の高さ(Height of plumes) (m)	100 (25)
噴煙の色(Color of plumes)	W
他の火山現象(Other volcanic phenomena)	-

Note: Plumes were from the Fumarolic area in Crater wall.

Note: Uncolored:Plume color was White(W).

Colored:Plume color was Light white(LW), Grayish white(GW), Gray(G) and other.

Bandaisan: November,2008



(9)那須岳

震動観測(Seismic Observation)

	月計 total	最大(起日) max (date)
火山性地震回数(Number of volcanic earthquakes)	7	2 (9)
火山性微動回数(Number of volcanic tremors)	0	0
微動継続時間(Duration of volcanic tremors) (min.)	-	-

Note: NSUA (N37° 06.2' E139° 59.6' H1,083m)

遠望観測(Visual Observation)

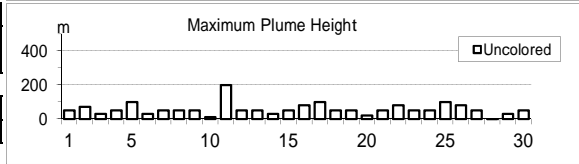
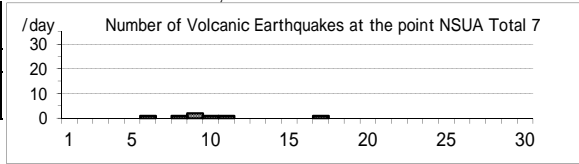
	最大(起日) max (date)
噴煙量(Quantity of plumes) (JMA's scale)	1 (abbr.)
噴煙の高さ(Height of plumes) (m)	200 (11)
噴煙の色(Color of plumes)	W
他の火山現象(Other volcanic phenomena)	-

Note: Plumes were from the west flank of Mt. Nasudake.

Note: Uncolored:Plume color was White(W).

Colored:Plume color was Light white(LW), Grayish white(GW), Gray(G) and other.

Nasudake: November,2008



(10)草津白根山

震動観測(Seismic Observation)

	月計 total	最大(起日) max (date)
火山性地震回数(Number of volcanic earthquakes)	25	5 (27)
火山性微動回数(Number of volcanic tremors)	0	0
微動継続時間(Duration of volcanic tremors) (min.)	-	-

Note: KSHA (N36° 38.9' E138° 32.7' H1,933m)

遠望観測(Visual Observation)

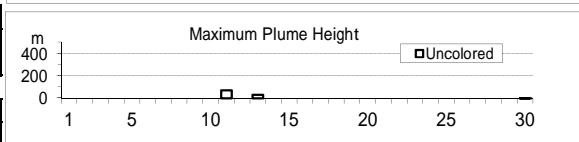
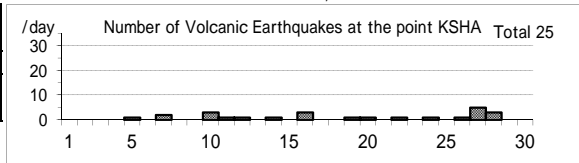
	最大(起日) max (date)
噴煙量(Quantity of plumes) (JMA's scale)	1 (11,13)
噴煙の高さ(Height of plumes) (m)	70 (11)
噴煙の色(Color of plumes)	W
他の火山現象(Other volcanic phenomena)	-

Note: Plumes were from the Yugama Crater and Fumaroles at northern side of Yugama Crater

Note: Uncolored:Plume color was White(W).

Colored:Plume color was Light white(LW), Grayish white(GW), Gray(G) and other.

Kusatsu-Shiranesan: November,2008



(11)浅間山

震動観測(Seismic Observation) Observation Point: ASMB	月計 total	最大(起日) max (date)
火山性地震回数(Number of volcanic earthquakes)	2099	149 (4)
火山性微動回数(Number of volcanic tremors)	94	23 (19)
微動継続時間(Duration of volcanic tremors) (min.)	105	33 (19)

Note: ASMB (N36°23.4' E138°31.1' H1,864m)

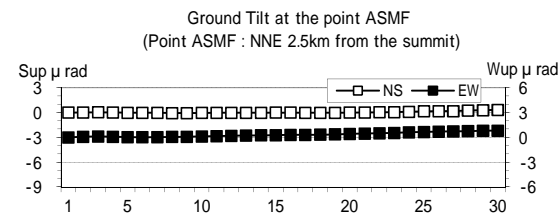
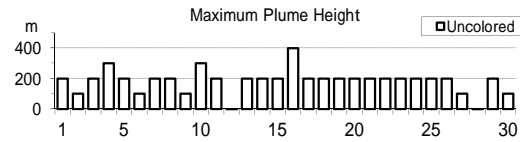
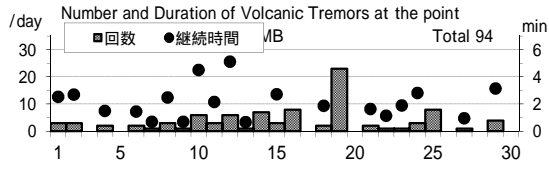
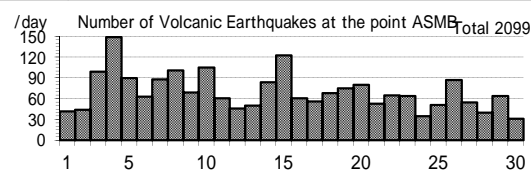
遠望観測(Visual Observation)	最大(起日) max (date)
噴煙量(Quantity of plumes) (JMA's scale)	2 (abbr.)
噴煙の高さ(Height of plumes) (m)	400 (16)
噴煙の色(Color of plumes)	W
他の火山現象(Other volcanic phenomena)	-

Note: Plumes were from the Kamayama Crater(Location A).

Note: Uncolored:Plume color was White(W).

Colored:Plume color was Light white(LW), Grayish white(GW), Gray(G) and other.

Asamayama: November,2008



(12)御嶽山

震動観測(Seismic Observation) Observation Point: ONTA	月計 total	最大(起日) max (date)
火山性地震回数(Number of volcanic earthquakes)	26	9 (12)
火山性微動回数(Number of volcanic tremors)	0	0
微動継続時間(Duration of volcanic tremors) (min.)	-	-

Note: ONTA (N35°52.6' E137°29.7' H2,228m)

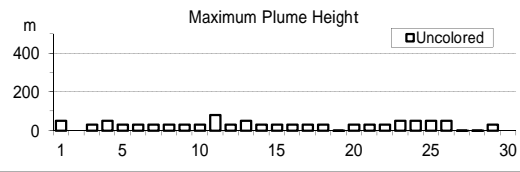
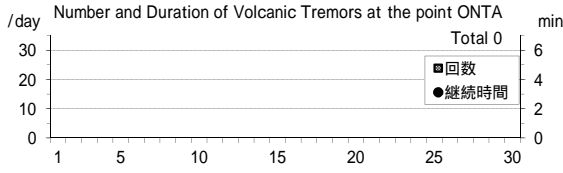
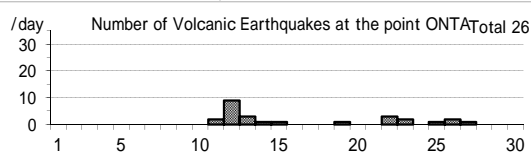
遠望観測(Visual Observation)	最大(起日) max (date)
噴煙量(Quantity of plumes) (JMA's scale)	1 (abbr.)
噴煙の高さ(Height of plumes) (m)	80 (11)
噴煙の色(Color of plumes)	W
他の火山現象(Other volcanic phenomena)	-

Note: Plumes were from the Otaki summit Crater (A) and/or S6

Note: Uncolored:Plume color was White(W).

Colored:Plume color was Light white(LW), Grayish white(GW), Gray(G) and other.

Ontakesan: November,2008



(13)伊豆東部火山群

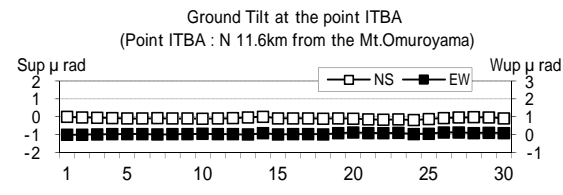
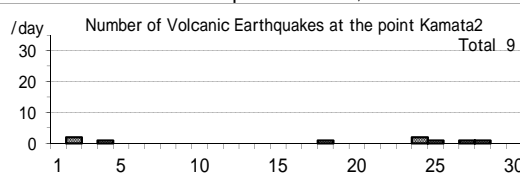
震動観測(Seismic Observation) Observation Point: ITBA,Kamata2	月計 total	最大(起日) max (date)
火山性地震回数(Number of volcanic earthquakes)	9	2 (2,24)
火山性微動回数(Number of volcanic tremors)	0	0
微動継続時間(Duration of volcanic tremors) (min.)	-	-

Note: ITBA (N35°00.5' E139°05.9' H12m)

Kamata2(N34°55.71' E139°03.65' H175m)

遠望観測(Visual Observation)	最大(起日) max (date)
噴煙量(Quantity of plumes) (JMA's scale)	-
噴煙の高さ(Height of plumes) (m)	-
噴煙の色(Color of plumes)	-
他の火山現象(Other volcanic phenomena)	-

Izu-Tobu Volcano Group: November,2008



(14)伊豆大島

震動観測(Seismic Observation) Observation Point: OSMA	月計 total	最大(起日) max (date)
火山性地震回数(Number of volcanic earthquakes)	77	7 (4,8)
火山性微動回数(Number of volcanic tremors)	-	-
微動継続時間(Duration of volcanic tremors) (min.)	-	-

Note: OSMA (N34 44.2' E139 23.2' H553m)

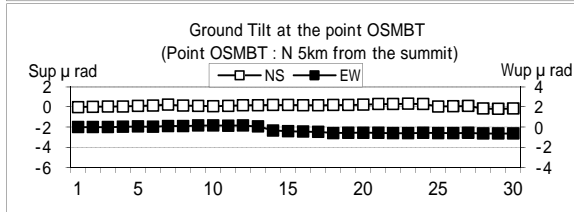
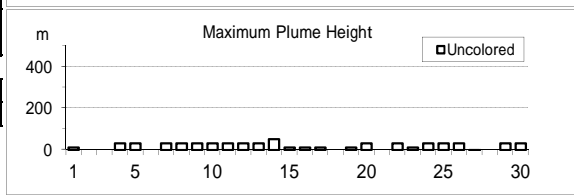
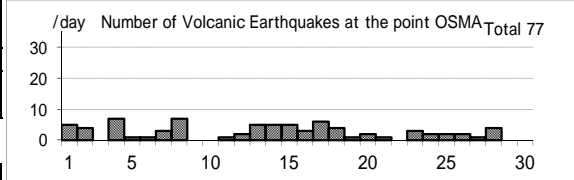
遠望観測(Visual Observation)	最大(起日) max (date)
噴煙量(Quantity of plumes) (JMA's scale)	1 (abbr.)
噴煙の高さ(Height of plumes) (m)	50 (14)

噴煙の色(Color of plumes)	W
他の火山現象(Other volcanic phenomena)	-

Note: Plumes were from the Miharayama Summit Crater(Location A), the Fumaroles at western side of Miharashinzan(A1), the Fumaroles near Kengamine(A2), the Fumaroles at eastern side of Miharashinzan(A3)

Note: Uncolored: Plume color was White(W).
Colored: Plume color was Light white(LW), Grayish white(GW), Gray(G) and other.

Izu-Oshima: November,2008



(15)三宅島

震動観測(Seismic Observation) Observation Point: MKJA	月計 total	最大(起日) max (date)
火山性地震回数(Number of volcanic earthquakes)	3632	213 (19)
火山性微動回数(Number of volcanic tremors)	5	2 (1,23)
微動継続時間(Duration of volcanic tremors) (min.)	12	7 (23)

Note: MKJA (N34 05.9' E139 32.0' H527m)

遠望観測(Visual Observation)	最大(起日) max (date)
噴煙量(Quantity of plumes) (JMA's scale)	2 (6,16,22)
噴煙の高さ(Height of plumes) (m)	300 (abbr.)

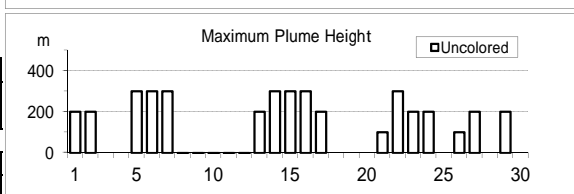
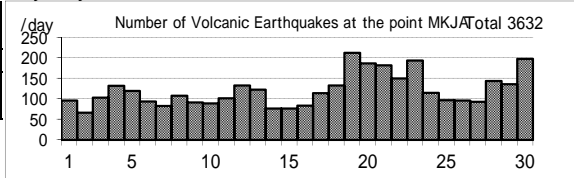
噴煙の色(Color of plumes)	W
他の火山現象(Other volcanic phenomena)	-

Note: Plumes were from the Summit Crater.

Note: Uncolored: Plume color was White(W).

Colored: Plume color was Light white(LW), Grayish white(GW), Gray(G) and other.

Miyakejima: November,2008



(16)九重山

震動観測(Seismic Observation) Observation Point: KJUA	月計 total	最大(起日) max (date)
火山性地震回数(Number of volcanic earthquakes)	13	2 (11)
火山性微動回数(Number of volcanic tremors)	0	0
微動継続時間(Duration of volcanic tremors) (min.)	-	-

Note: KJUA (N33°06.2' E131°13.7' H1,280m)

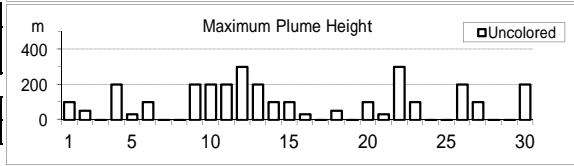
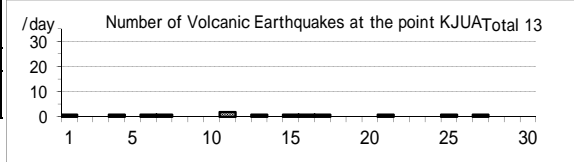
遠望観測(Visual Observation)	最大(起日) max (date)
噴煙量(Quantity of plumes) (JMA's scale)	1 (abbr.)
噴煙の高さ(Height of plumes) (m)	300 (12,22)
噴煙の色(Color of plumes)	W
他の火山現象(Other volcanic phenomena)	-

Note: Plumes were from the east and/or north-east flank of Mt. Hossho (Location A,B,C or D).

Note: Uncolored:Plume color was White(W).

Colored:Plume color was Light white(LW), Grayish white(GW), Gray(G) and other.

Kujusan: November,2008



(17)阿蘇山

震動観測(Seismic Observation) Observation Point: ASOA	月計 total	最大(起日) max (date)
火山性地震回数(Number of volcanic earthquakes)	272	61 (6)
孤立型火山性微動回数 (Number of isolated volcanic tremors)	2525	110 (30)

Note: ASOA (N32°53.1' E131°04.7' H1,163m)

遠望観測(Visual Observation)	最大(起日) max (date)
噴煙量(Quantity of plumes) (JMA's scale)	2 (12,22,26)
噴煙の高さ(Height of plumes) (m)	500 (26)

噴煙の色(Color of plumes)	W
他の火山現象(Other volcanic phenomena)	-

Note: Plumes were from the Crater No.1 of Mt. Nakadake.

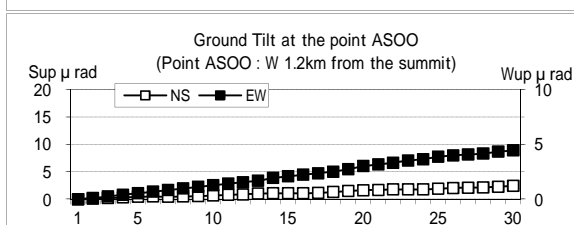
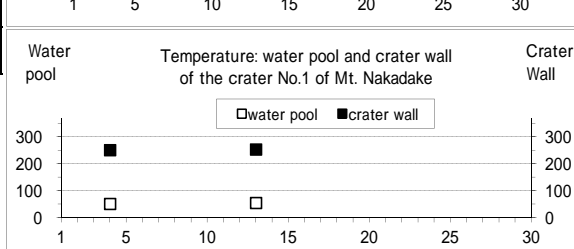
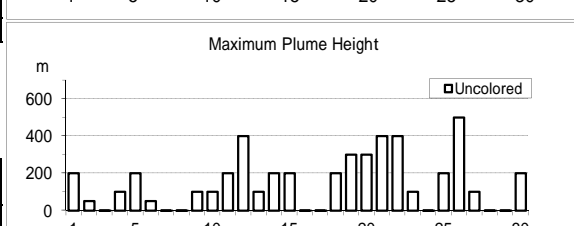
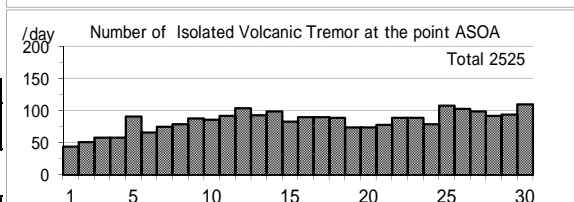
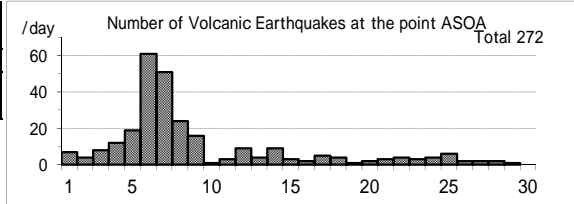
Note: Uncolored:Plume color was White(W).

Colored:Plume color was Light white(LW), Grayish white(GW), Gray(G) and other.

現地観測(Field Observation)	最高(起日) max (date)
	最低(起日) min (date)
火口内の湯だまりの表面温度 (Surface temperature on the water pool in the crater) ()	54 (13)
火口壁の表面温度 (Surface temperature on the crater wall) ()	51 (4)
	254 (13)
	251 (4)

Observation Point:the Crater No.1 of Mt. Nakadake

Asosan: November,2008



(18)雲仙岳

震動観測(Seismic Observation)

Observation Point: UNZA	月計 total	最大(起日) max (date)
火山性地震回数(Number of volcanic earthquakes)	2	1 (22,25)
火山性微動回数(Number of volcanic tremors)	0	0
微動継続時間(Duration of volcanic tremors) (min)	-	-

Note: UNZA (N32°44.1' E130°16.1' H769m)

遠望観測(Visual Observation)

最大(起日) max (date)	
噴煙量(Quantity of plumes) (JMA's scale)	1 (abbr.)
噴煙の高さ(Height of plumes) (m)	50 (20)

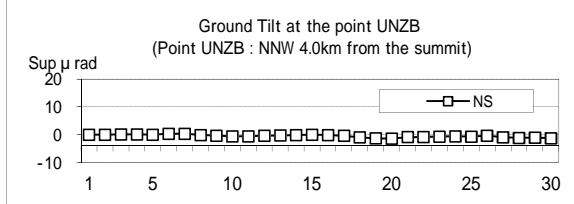
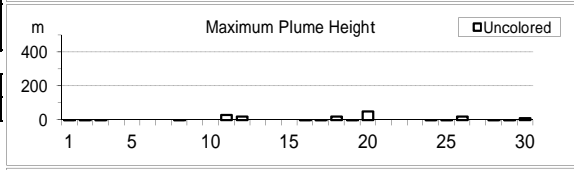
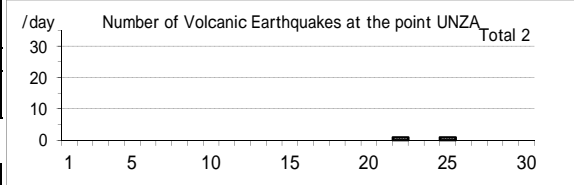
噴煙の色(Color of plumes)	W
他の火山現象(Other volcanic phenomena)	-

Note: Plumes were from the 10th Lava Dome(Location A10) and/or the 11th Lava Dome(A11).

Note: Uncolored:Plume color was White(W).

Colored:Plume color was Light white(LW), Grayish white(GW), Gray(G) and other.

Unzendake: November,2008



(19)霧島山

新燃岳 (Shinmoedake)

震動観測(Seismic Observation)

Observation Point: KIRA	月計 total	最大(起日) max (date)
火山性地震回数(Number of volcanic earthquakes)	34	4 (15)
火山性微動回数(Number of volcanic tremors)	0	0
微動継続時間(Duration of volcanic tremors) (min)	-	-

Note: KIRA (N31°54.0' E130°52.3' H1,035m)

遠望観測(Visual Observation)

最大(起日) max (date)	
噴煙量(Quantity of plumes) (JMA's scale)	2 (30)
噴煙の高さ(Height of plumes) (m)	600 (12,13,30)

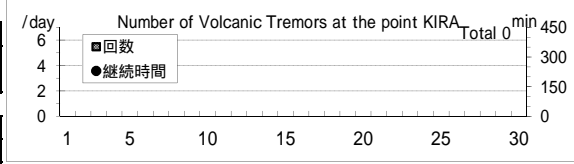
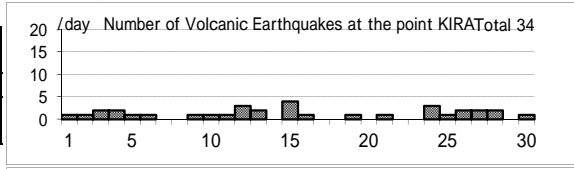
噴煙の色(Color of plumes)	W
他の火山現象(Other volcanic phenomena)	-

Note: Plumes were from the Shinmoedake Crater

Note: Uncolored:Plume color was White(W).

Colored:Plume color was Light white(LW), Grayish white(GW), Gray(G) and other.

Kirishimayama: November,2008



御鉢(Ohachi)

震動観測(Seismic Observation)

Observation Point: KTCM	月計 total	最大(起日) max (date)
火山性地震回数(Number of volcanic earthquakes)	1	1 (11)
火山性微動回数(Number of volcanic tremors)	0	0
微動継続時間(Duration of volcanic tremors) (min)	-	-

Note: KTCM (N31°53.2' E130°55.2' H1,549m)

遠望観測(Visual Observation)

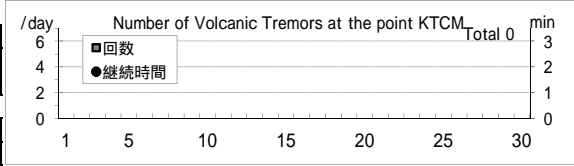
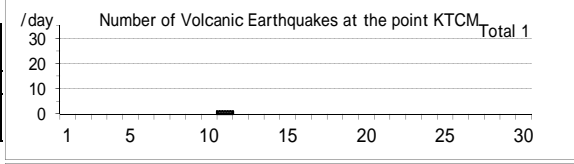
最大(起日) max (date)	
噴煙量(Quantity of plumes) (JMA's scale)	-
噴煙の高さ(Height of plumes) (m)	-

噴煙の色(Color of plumes)	-
他の火山現象(Other volcanic phenomena)	-

Note: Plumes were from the Ohachi Crater

Note: Uncolored:Plume color was White(W).

Colored:Plume color was Light white(LW), Grayish white(GW), Gray(G) and other.



(20)桜島

震動観測(Seismic Observation)

Observation Point: SKRB	月計 total	最大(起日) max (date)
火山性地震回数(Number of volcanic earthquakes)	220	18 (14)
火山性微動回数(Number of volcanic tremors)	32	14 (7)
微動継続時間(Duration of volcanic tremors) (min)	33	12 (7)

Note: SKRB (N31°35.6' E130°38.4' H455m)

遠望観測(Visual Observation)

	月計 total	最大(起日) max (date)
爆発回数(Number of explosive eruptions)	0	0
降灰量(Amount of ash fall) (g/m ²)	-	-

A,B火口 (A,B crater)	最大(起日) max (date)
噴煙量(Quantity of plumes) (JMA's scale)	2 (abbr.)
噴煙の高さ(Height of plumes) (m)	700 (13)

昭和火口 (Showa crater)	最大(起日) max (date)
噴煙量(Quantity of plumes) (JMA's scale)	2 (6,14)
噴煙の高さ(Height of plumes) (m)	600 (13,14)

噴煙の色(Color of plumes)	W,LW,GW
他の火山現象(Other volcanic phenomena)	GL

Note: Plumes were from Mt. Minamidake A Crater(A), B Crater(B) and Showa Crater(S)

Note: Uncolored:Plume color was White(W).

Colored:Plume color was Light white(LW), Grayish white(GW), Gray(G) and other.

爆発時の遠望観測(Visual observation of explosion)

Date	Time	Col	Q	H(*100m)	Dir	Remarks
-	-	-	-	-	-	-

Sakurajima: November,2008

