

# 火山観測 Summary of Observations on Volcanoes

## 常時観測 平成20年(2008年)4月

### Constant Observation in April,2008

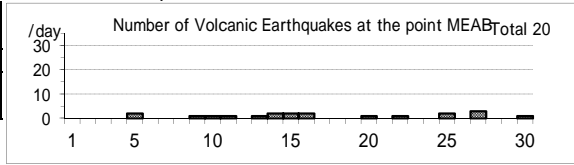
#### (1) 雌阿寒岳

震動観測(Seismic Observation)

	月計 total	最大(起日) max (date)
Observation Point: MEAB		
火山性地震回数(Number of volcanic earthquakes)	20	3 (27)
火山性微動回数(Number of volcanic tremors)	-	-
微動継続時間(Duration of volcanic tremors) (min.)	-	-

Note: MEAB (N43 22.8' E143 58.7' H680m)

Meakandake: April,2008



遠望観測(Visual Observation)

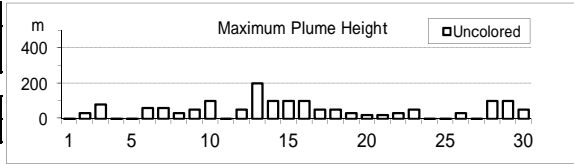
	最大(起日) max (date)
噴煙量(Quantity of plumes) (JMA's scale)	1 (abbr.)
噴煙の高さ(Height of plumes) (m)	200 (13)

噴煙の色(Color of plumes)	W
他の火山現象(Other volcanic phenomena)	-

Note: Plumes were from the Pommachineshiri Summit Crater(Location T), the Nakamachineshiri Crater(U), the Akanuma Crater(M) and/or Pommachineshiri NW Fumaroles(N).

Note: Uncolored:Plume color was White(W).

Colored:Plume color was Light white(LW), Grayish white(GW), Gray(G) and other.



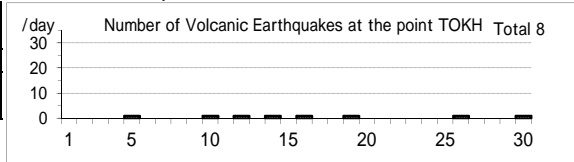
#### (2) 十勝岳

震動観測(Seismic Observation)

	月計 total	最大(起日) max (date)
Observation Point: TOKH		
火山性地震回数(Number of volcanic earthquakes)	8	1 (abbr.)
火山性微動回数(Number of volcanic tremors)	-	-
微動継続時間(Duration of volcanic tremors) (min.)	-	-

Note: TOKH (N43 26.0' E142 40.2' H1,355m)

Tokachidake: April,2008



遠望観測(Visual Observation)

	最大(起日) max (date)
噴煙量(Quantity of plumes) (JMA's scale)	1 (abbr.)
噴煙の高さ(Height of plumes) (m)	300 (13)

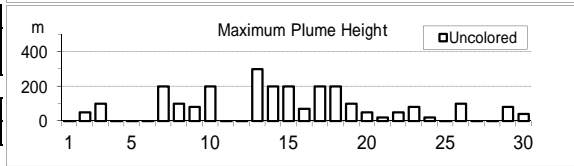
噴煙の色(Color of plumes)	W
他の火山現象(Other volcanic phenomena)	-

Note: Plumes were from the Taisho Crater(Location X),

the 62 crater Area(P,Q,Y), the Furikozawa Fumaroles (F) and/or the Kyufun Crater (Z).

Note: Uncolored:Plume color was White(W).

Colored:Plume color was Light white(LW), Grayish white(GW), Gray(G) and other.



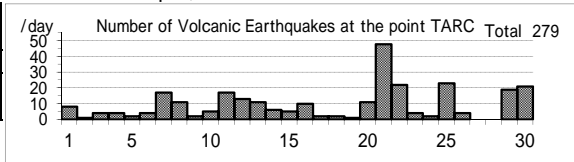
#### (3) 樽前山

震動観測(Seismic Observation)

	月計 total	最大(起日) max (date)
Observation Point: TARC		
火山性地震回数(Number of volcanic earthquakes)	279	48 (21)
火山性微動回数(Number of volcanic tremors)	-	-
微動継続時間(Duration of volcanic tremors) (min.)	-	-

Note: TARC (N42 42.2' E141 22.6' H638m)

Tarumaesan: April,2008



遠望観測(Visual Observation)

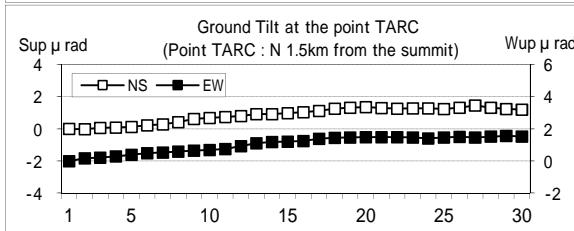
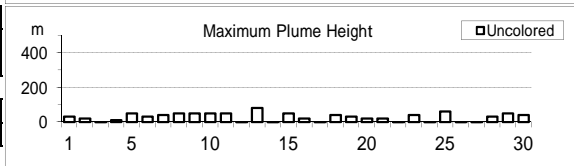
	最大(起日) max (date)
噴煙量(Quantity of plumes) (JMA's scale)	1 (abbr.)
噴煙の高さ(Height of plumes) (m)	80 (13)

噴煙の色(Color of plumes)	W
他の火山現象(Other volcanic phenomena)	-

Note: Plumes were from the Summit Area(Location A, B and/or E).

Note: Uncolored:Plume color was White(W).

Colored:Plume color was Light white(LW), Grayish white(GW), Gray(G) and other.



(4)有珠山

震動観測(Seismic Observation)

Observation Point: USUA	月計 total	最大(起日) max (date)
火山性地震回数(Number of volcanic earthquakes)	28	4 (26)
火山性微動回数(Number of volcanic tremors)	-	-
微動継続時間(Duration of volcanic tremors) (min.)	-	-

Note: USUA (N42°31.7' E140°50.2' H246m)

遠望観測(Visual Observation)

	最大(起日) max (date)
噴煙量(Quantity of plumes) (JMA's scale)	1 (abbr.)
噴煙の高さ(Height of plumes) (m)	100 (abbr.)

噴煙の色(Color of plumes)	W
他の火山現象(Other volcanic phenomena)	-

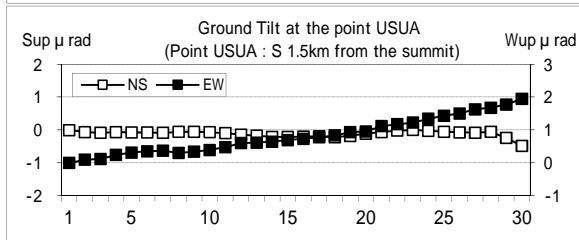
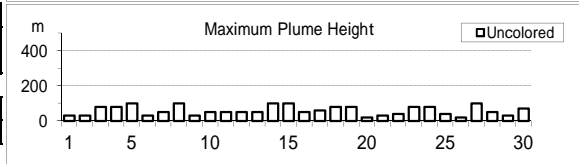
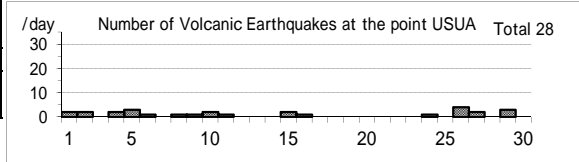
Note: Plumes were from the Summit Area of Usuzan(Location P), Mt.showa-shinazan(Z), Nishi-yama vent group(N) and Konpira-yama vent group(K).

Note: Uncolored:Plume color was White(W).

Colored:Plume color was Light white(LW),

Grayish white(GW), Gray(G) and other.

Usuzan: April,2008



(5)北海道駒ヶ岳

震動観測(Seismic Observation)

Observation Point: KOMA	月計 total	最大(起日) max (date)
火山性地震回数(Number of volcanic earthquakes)	-	-
火山性微動回数(Number of volcanic tremors)	-	-
微動継続時間(Duration of volcanic tremors) (min.)	-	-

Note: KOMA (N42°03.2' E140°38.3' H265m)

遠望観測(Visual Observation)

	最大(起日) max (date)
噴煙量(Quantity of plumes) (JMA's scale)	-
噴煙の高さ(Height of plumes) (m)	-

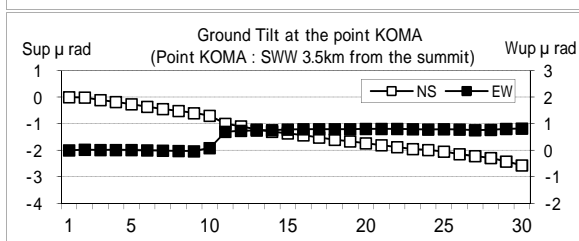
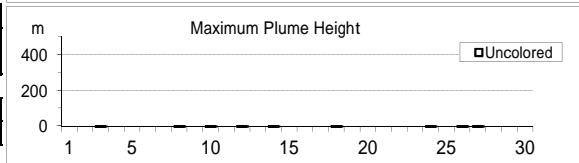
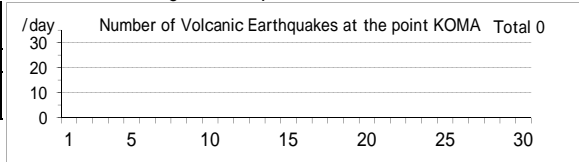
噴煙の色(Color of plumes)	-
他の火山現象(Other volcanic phenomena)	-

Note: Plumes were from the Showa-4 Crater(Location D1) and/or the 96 South Crater(D2).

Note: Uncolored:Plume color was White(W).

Colored:Plume color was Light white(LW), Grayish white(GW), Gray(G) and other.

Hokkaido-Komagatake: April,2008



(6)吾妻山

震動観測(Seismic Observation)

Observation Point: AZUA	月計 total	最大(起日) max (date)
火山性地震回数(Number of volcanic earthquakes)	4	3 (14)
火山性微動回数(Number of volcanic tremors)	-	-
微動継続時間(Duration of volcanic tremors) (min.)	-	-

Note: AZUA (N37°43.3' E140°16.5' H1,295m)

遠望観測(Visual Observation)

	最大(起日) max (date)
噴煙量(Quantity of plumes) (JMA's scale)	1 (abbr.)
噴煙の高さ(Height of plumes) (m)	20 (2.6)

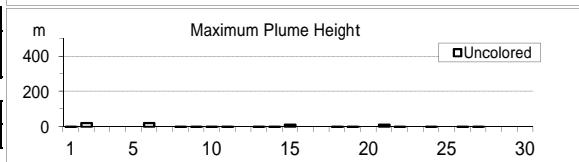
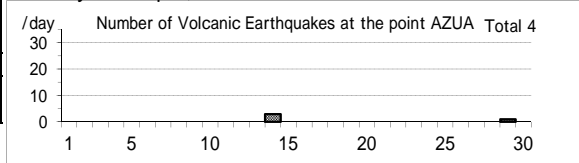
噴煙の色(Color of plumes)	W
他の火山現象(Other volcanic phenomena)	-

Note: Plumes were from the Oana Crater

Note: Uncolored:Plume color was White(W).

Colored:Plume color was Light white(LW), Grayish white(GW), Gray(G) and other.

Azumayama: April,2008



(7)安達太良山

震動観測(Seismic Observation)

Observation Point: ADTB	月計 total	最大(起日) max (date)
火山性地震回数(Number of volcanic earthquakes)	1	1 (6)
火山性微動回数(Number of volcanic tremors)	-	-
微動継続時間(Duration of volcanic tremors) (min.)	-	-

Note: ADTB(N37° 38.1 E140° 18.2 H1,320m)

遠望観測(Visual Observation)

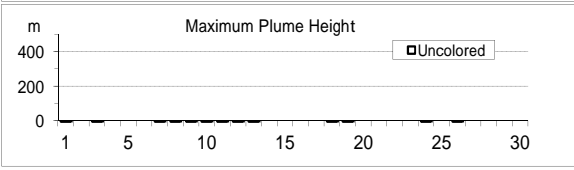
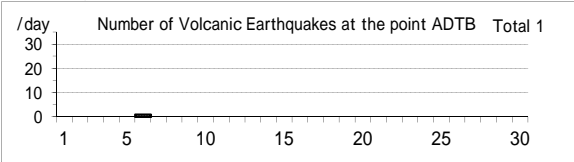
Observation Point: ADTB	最大(起日) max (date)
噴煙量(Quantity of plumes) (JMA's scale)	-
噴煙の高さ(Height of plumes) (m)	-
噴煙の色(Color of plumes)	-
他の火山現象(Other volcanic phenomena)	-

Note: Plumes were from the Numanodaira - SW area.

Note: Uncolored:Plume color was White(W).

Colored:Plume color was Light white(LW), Grayish white(GW), Gray(G) and other.

Adatarayama: April,2008



(8)磐梯山

震動観測(Seismic Observation)

Observation Point: BNDA	月計 total	最大(起日) max (date)
火山性地震回数(Number of volcanic earthquakes)	20	9 (29)
火山性微動回数(Number of volcanic tremors)	3	1 (21,22,28)
微動継続時間(Duration of volcanic tremors) (min.)	2	1 (28)

Note: BNDA (N37° 35.0 E140° 04.8 H1000m)

遠望観測(Visual Observation)

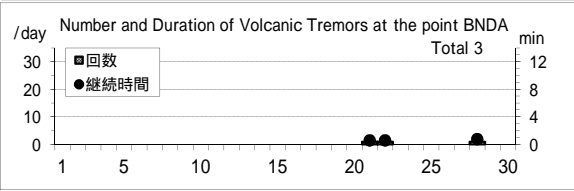
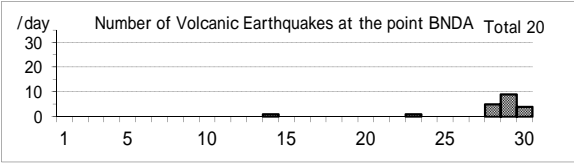
Observation Point: BNDA	最大(起日) max (date)
噴煙量(Quantity of plumes) (JMA's scale)	-
噴煙の高さ(Height of plumes) (m)	-
噴煙の色(Color of plumes)	-
他の火山現象(Other volcanic phenomena)	-

Note: Plumes were from the Fumarolic area in Crater wall.

Note: Uncolored:Plume color was White(W).

Colored:Plume color was Light white(LW), Grayish white(GW), Gray(G) and other.

Bandaisan: April,2008



(9)那須岳

震動観測(Seismic Observation)

Observation Point: NSUA	月計 total	最大(起日) max (date)
火山性地震回数(Number of volcanic earthquakes)	4	1 (abbr.)
火山性微動回数(Number of volcanic tremors)	-	-
微動継続時間(Duration of volcanic tremors) (min.)	-	-

Note: NSUA (N37° 06.2' E139° 59.6' H1,083m)

遠望観測(Visual Observation)

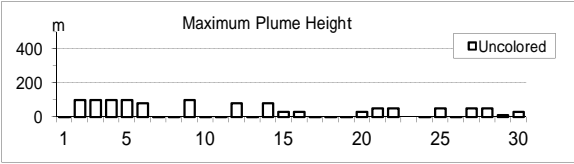
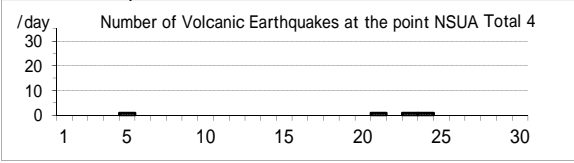
Observation Point: NSUA	最大(起日) max (date)
噴煙量(Quantity of plumes) (JMA's scale)	1 (abbr.)
噴煙の高さ(Height of plumes) (m)	100 (abbr.)
噴煙の色(Color of plumes)	W
他の火山現象(Other volcanic phenomena)	-

Note: Plumes were from the west flank of Mt. Nasudake.

Note: Uncolored:Plume color was White(W).

Colored:Plume color was Light white(LW), Grayish white(GW), Gray(G) and other.

Nasudake: April,2008



(10)草津白根山

震動観測(Seismic Observation)

Observation Point: KSHA	月計 total	最大(起日) max (date)
火山性地震回数(Number of volcanic earthquakes)	21	2 (abbr.)
火山性微動回数(Number of volcanic tremors)	-	-
微動継続時間(Duration of volcanic tremors) (min.)	-	-

Note: KSHA (N36° 38.9' E138° 32.7' H1,933m)

遠望観測(Visual Observation)

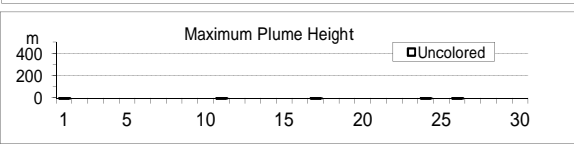
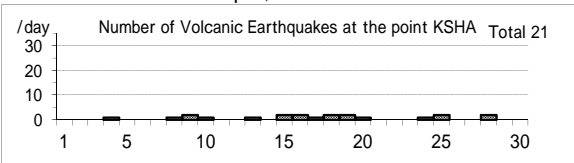
Observation Point: KSHA	最大(起日) max (date)
噴煙量(Quantity of plumes) (JMA's scale)	-
噴煙の高さ(Height of plumes) (m)	-
噴煙の色(Color of plumes)	-
他の火山現象(Other volcanic phenomena)	-

Note: Plumes were from the Yugama Crater and Fumaroles at northern side of Yugama Crater

Note: Uncolored:Plume color was White(W).

Colored:Plume color was Light white(LW), Grayish white(GW), Gray(G) and other.

Kusatsu-Shiranesan: April,2008



(11)浅間山

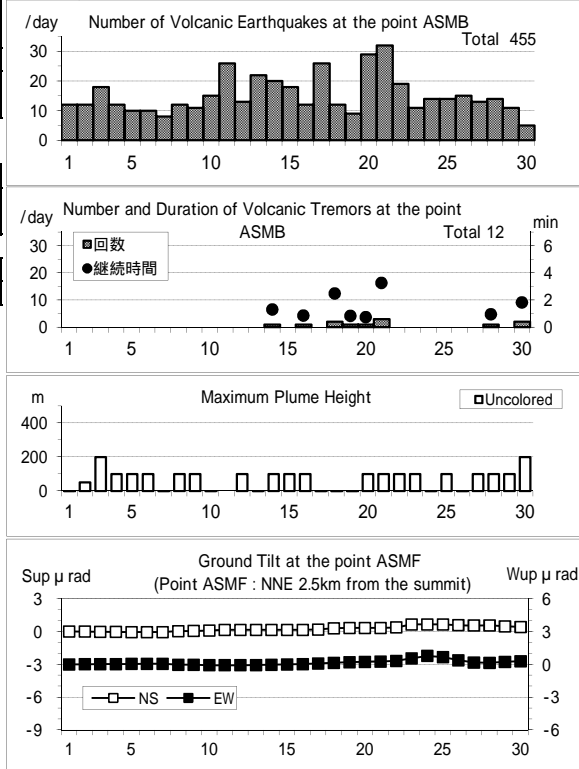
震動観測(Seismic Observation) Observation Point: ASMB	月計 total	最大(起日) max (date)
火山性地震回数(Number of volcanic earthquakes)	455	32 (21)
火山性微動回数(Number of volcanic tremors)	12	3 (21)
微動継続時間(Duration of volcanic tremors) (min.)	12	3 (21)

Note: ASMB (N36°23.4' E138°31.1' H1,864m)

遠望観測(Visual Observation)	最大(起日) max (date)
噴煙量(Quantity of plumes) (JMA's scale)	1 (abbr.)
噴煙の高さ(Height of plumes) (m)	200 (3,,30)
噴煙の色(Color of plumes)	W
他の火山現象(Other volcanic phenomena)	-

Note: Plumes were from the Kamayama Crater(Location A).  
 Note: Uncolored:Plume color was White(W).  
 Colored:Plume color was Light white(LW), Grayish white(GW), Gray(G) and other.

Asamayama: April,2008



(12)御嶽山

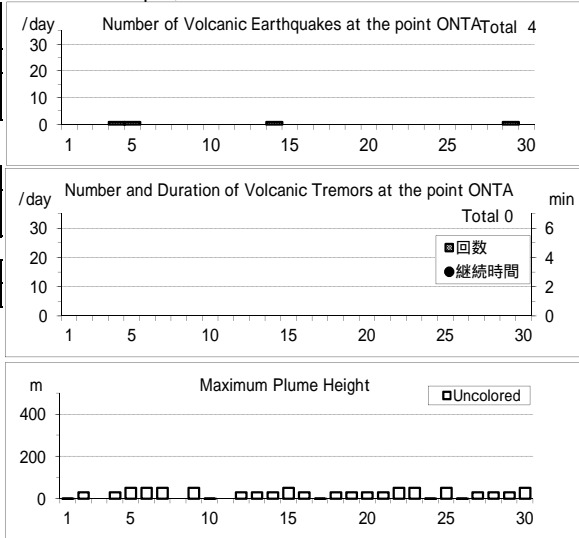
震動観測(Seismic Observation) Observation Point: ONTA	月計 total	最大(起日) max (date)
火山性地震回数(Number of volcanic earthquakes)	4	1 (abbr.)
火山性微動回数(Number of volcanic tremors)	-	-
微動継続時間(Duration of volcanic tremors) (min.)	-	-

Note: ONTA (N35°52.6' E137°29.7' H2,228m)

遠望観測(Visual Observation)	最大(起日) max (date)
噴煙量(Quantity of plumes) (JMA's scale)	1 (abbr.)
噴煙の高さ(Height of plumes) (m)	50 (abbr.)
噴煙の色(Color of plumes)	W
他の火山現象(Other volcanic phenomena)	-

Note: Plumes were from the Otaki summit Crater (A) and/or S6  
 Note: Uncolored:Plume color was White(W).  
 Colored:Plume color was Light white(LW), Grayish white(GW), Gray(G) and other.

Ontakesan: April,2008



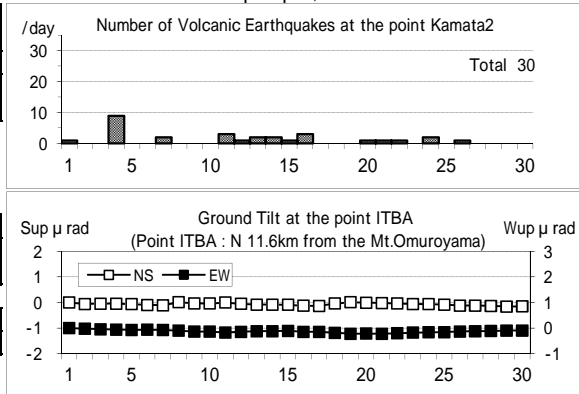
(13)伊豆東部火山群

震動観測(Seismic Observation) Observation Point: ITBA,Kamata2	月計 total	最大(起日) max (date)
火山性地震回数(Number of volcanic earthquakes)	30	9 (4)
火山性微動回数(Number of volcanic tremors)	-	-
微動継続時間(Duration of volcanic tremors) (min.)	-	-

Note: ITBA (N35°00.5' E139°05.9' H12m)  
 Kamata2(N34°55.71' E139°03.65' H175m)

遠望観測(Visual Observation)	最大(起日) max (date)
噴煙量(Quantity of plumes) (JMA's scale)	-
噴煙の高さ(Height of plumes) (m)	-
噴煙の色(Color of plumes)	-
他の火山現象(Other volcanic phenomena)	-

Izu-Tobu Volcano Group: April,2008



(14)伊豆大島

震動観測(Seismic Observation)  
Observation Point: OSMA

	月計 total	最大(起日) max (date)
火山性地震回数(Number of volcanic earthquakes)	27	5 (7)
火山性微動回数(Number of volcanic tremors)	-	-
微動継続時間(Duration of volcanic tremors) (min.)	-	-

Note: OSMA (N34 44.2' E139 23.2' H553m)

遠望観測(Visual Observation)

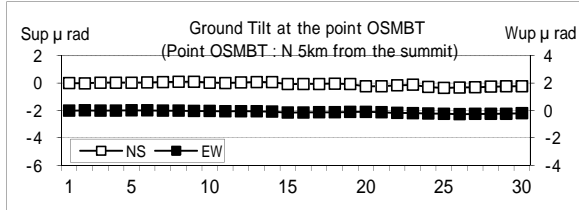
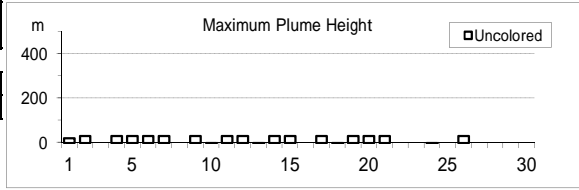
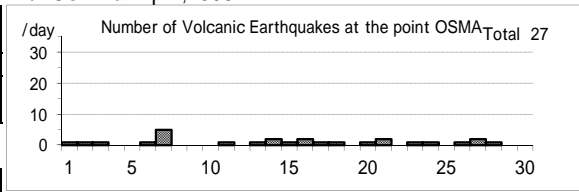
	最大(起日) max (date)
噴煙量(Quantity of plumes) (JMA's scale)	1 (abbr.)
噴煙の高さ(Height of plumes) (m)	30 (abbr.)
噴煙の色(Color of plumes)	W
他の火山現象(Other volcanic phenomena)	-

Note:Plumes were from the Miharayama Summit Crater(Location A),  
the Fumaroles at western side of Miharashinzan(A1),  
the Fumaroles near Kengamine(A2),  
the Fumaroles at eastern side of Miharashinzan(A3)

Note: Uncolored:Plume color was White(W).

Colored:Plume color was Light white(LW), Grayish white(GW),  
Gray(G) and other.

Izu-Oshima: April,2008



(15)三宅島

震動観測(Seismic Observation)  
Observation Point: MKJA

	月計 total	最大(起日) max (date)
火山性地震回数(Number of volcanic earthquakes)	1015	86 (1)
火山性微動回数(Number of volcanic tremors)	-	-
微動継続時間(Duration of volcanic tremors) (min.)	-	-

Note: MKJA (N34 05.9' E139 32.0' H527m)

遠望観測(Visual Observation)

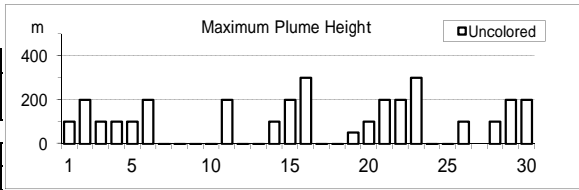
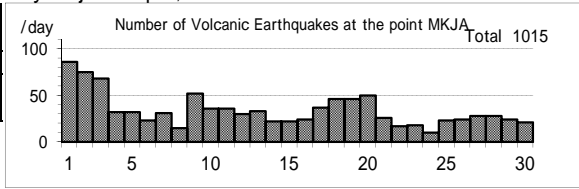
	最大(起日) max (date)
噴煙量(Quantity of plumes) (JMA's scale)	2 (23)
噴煙の高さ(Height of plumes) (m)	300 (16,23)
噴煙の色(Color of plumes)	W
他の火山現象(Other volcanic phenomena)	-

Note: Plumes were from the Summit Crater.

Note: Uncolored:Plume color was White(W).

Colored:Plume color was Light white(LW), Grayish white(GW), Gray(G) and other.

Miyakejima: April,2008



(16)九重山

震動観測(Seismic Observation) Observation Point: KJUA	月計 total	最大(起日) max (date)
火山性地震回数(Number of volcanic earthquakes)	5	1 (abbr.)
火山性微動回数(Number of volcanic tremors)	-	-
微動継続時間(Duration of volcanic tremors) (min.)	-	-

Note: KJUA (N33°06.2' E131°13.7' H1,280m)

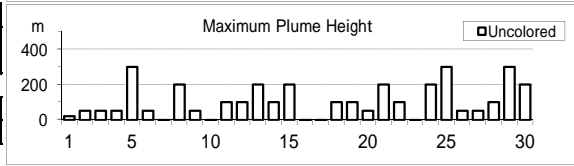
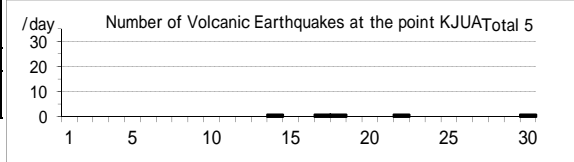
遠望観測(Visual Observation)	最大(起日) max (date)
噴煙量(Quantity of plumes) (JMA's scale)	1 (abbr.)
噴煙の高さ(Height of plumes) (m)	300 (5,25,29)
噴煙の色(Color of plumes)	W
他の火山現象(Other volcanic phenomena)	-

Note: Plumes were from the east and/or north-east flank of Mt. Hossho (Location A,B,C or D).

Note: Uncolored:Plume color was White(W).

Colored:Plume color was Light white(LW), Grayish white(GW), Gray(G) and other.

Kujusan: April,2008



(17)阿蘇山

震動観測(Seismic Observation) Observation Point: ASOA	月計 total	最大(起日) max (date)
火山性地震回数(Number of volcanic earthquakes)	170	32 (1)
孤立型火山性微動回数 (Number of isolated volcanic tremors)	11024	692 (2)

Note: ASOA (N32°53.1' E131°04.7' H1,163m)

遠望観測(Visual Observation)	最大(起日) max (date)
噴煙量(Quantity of plumes) (JMA's scale)	2 (13)
噴煙の高さ(Height of plumes) (m)	600 (15)

噴煙の色(Color of plumes)	W
他の火山現象(Other volcanic phenomena)	-

Note: Plumes were from the Crater No.1 of Mt. Nakadake.

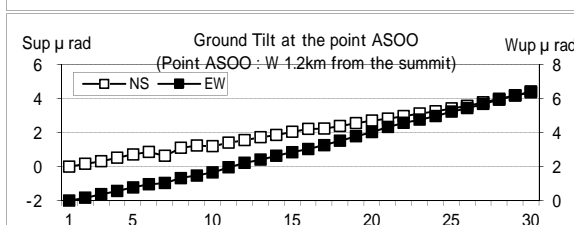
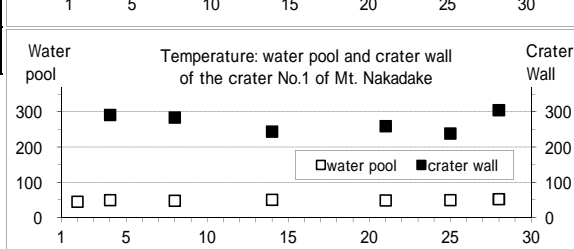
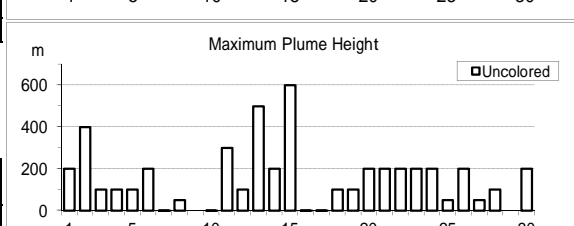
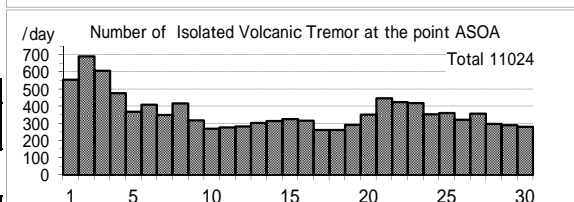
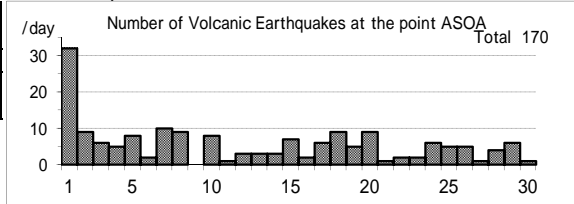
Note: Uncolored:Plume color was White(W).

Colored:Plume color was Light white(LW), Grayish white(GW), Gray(G) and other.

現地観測(Field Observation)	最高(起日) max (date)	最低(起日) min (date)
火口内の湯だまりの表面温度 (Surface temperature on the water pool in the crater) ( )	53 (28)	45 (2)
火口壁の表面温度 (Surface temperature on the crater wall) ( )	306 (28)	239 (25)

Observation Point:the Crater No.1 of Mt. Nakadake

Asosan: April,2008



(18)雲仙岳

震動観測(Seismic Observation)

Observation Point: UNZA	月計	最大(起日)
	total	max (date)
火山性地震回数(Number of volcanic earthquakes)	1	1 (2)
火山性微動回数(Number of volcanic tremors)	-	-
微動継続時間(Duration of volcanic tremors) (min)	-	-

Note: UNZA (N32°44.1' E130°16.1' H769m)

遠望観測(Visual Observation)

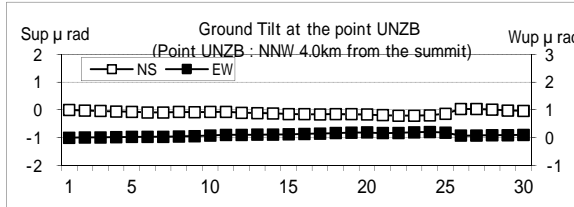
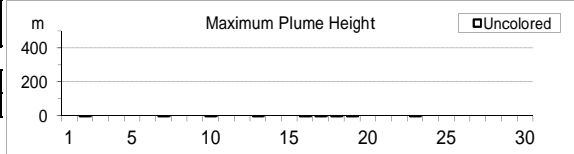
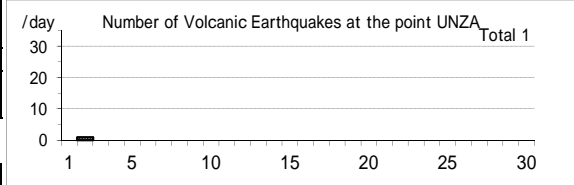
Observation Point: UNZA	最大(起日)
	max (date)
噴煙量(Quantity of plumes) (JMA's scale)	-
噴煙の高さ(Height of plumes) (m)	-
噴煙の色(Color of plumes)	-
他の火山現象(Other volcanic phenomena)	-

Note: Plumes were from the 10th Lava Dome(Location A10) and/or the 11th Lava Dome(A11).

Note: Uncolored:Plume color was White(W).

Colored:Plume color was Light white(LW), Grayish white(GW), Gray(G) and other.

Unzendake: April,2008



(19)霧島山

新燃岳 (Shinmoedake)

震動観測(Seismic Observation)

Observation Point: KIRA	月計	最大(起日)
	total	max (date)
火山性地震回数(Number of volcanic earthquakes)	19	7 (4)
火山性微動回数(Number of volcanic tremors)	-	-
微動継続時間(Duration of volcanic tremors) (min)	-	-

Note: KIRA (N31°54.0' E130°52.3' H1,035m)

遠望観測(Visual Observation)

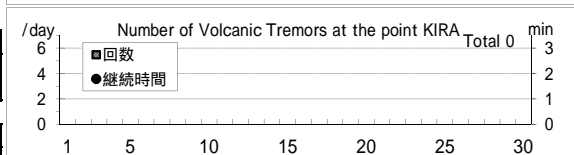
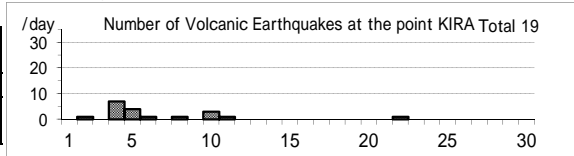
Observation Point: KIRA	最大(起日)
	max (date)
噴煙量(Quantity of plumes) (JMA's scale)	-
噴煙の高さ(Height of plumes) (m)	-
噴煙の色(Color of plumes)	-
他の火山現象(Other volcanic phenomena)	-

Note: Plumes were from the Shinmoedake Crater

Note: Uncolored:Plume color was White(W).

Colored:Plume color was Light white(LW), Grayish white(GW), Gray(G) and other.

Kirishimayama: April,2008



御鉢(Ohachi)

震動観測(Seismic Observation)

Observation Point: KTCM	月計	最大(起日)
	total	max (date)
火山性地震回数(Number of volcanic earthquakes)	7	2 (7)
火山性微動回数(Number of volcanic tremors)	5	1 (abbr.)
微動継続時間(Duration of volcanic tremors) (min)	5	1 (17)

Note: KTCM (N31°53.2' E130°55.2' H1,549m)

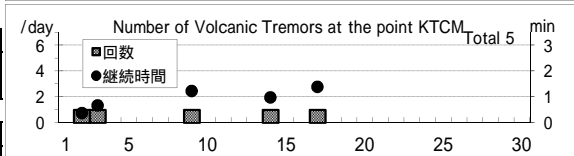
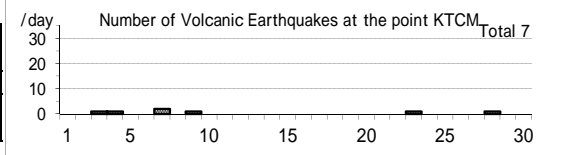
遠望観測(Visual Observation)

Observation Point: KTCM	最大(起日)
	max (date)
噴煙量(Quantity of plumes) (JMA's scale)	-
噴煙の高さ(Height of plumes) (m)	-
噴煙の色(Color of plumes)	-
他の火山現象(Other volcanic phenomena)	-

Note: Plumes were from the Ohachi Crater

Note: Uncolored:Plume color was White(W).

Colored:Plume color was Light white(LW), Grayish white(GW), Gray(G) and other.



(20)桜島

震動観測(Seismic Observation)

Observation Point: SKRB	月計 total	最大(起日) max (date)
火山性地震回数(Number of volcanic earthquakes)	119	25 (8)
火山性微動回数(Number of volcanic tremors)	56	28 (26)
微動継続時間(Duration of volcanic tremors) (min)	138	86 (26)

Note: SKRB (N31°35.6' E130°38.4' H455m)

遠望観測(Visual Observation)

	月計 total	最大(起日) max (date)
爆発回数(Number of explosive eruptions)	2	1 (8,11)
降灰量(Amount of ash fall) (g/m <sup>2</sup> )	4	2 (12)

A,B火口 (A,B crater)	最大(起日) max (date)
噴煙量(Quantity of plumes) (JMA's scale)	2 (abbr.)
噴煙の高さ(Height of plumes) (m)	800 (28)

昭和火口 (Showa crater)	最大(起日) max (date)
噴煙量(Quantity of plumes) (JMA's scale)	4 (11)
噴煙の高さ(Height of plumes) (m)	2200 (11)

噴煙の色(Color of plumes)	W,LW,GW,G
他の火山現象(Other volcanic phenomena)	PF,Bm,AS,VL,CF,GL

Note: Plumes were from Mt. Minamidake A Crater(A), B Crater(B) and Showa Crater(S)

Note: Uncolored:Plume color was White(W).

Colored:Plume color was Light white(LW), Grayish white(GW), Gray(G) and other.

爆発時の遠望観測(Visual observation of explosion)

Date	Time	Col	Q	H(*100m)	Dir	Remarks
0408	0029	X	3	12	SE	PF(1km),Bm(5合目),AS 2.3(D)
0411	1721	G	4	22	SE	Bm(5合目),AS 0.9(D)

Sakurajima: April,2008

