



# International Cooperation Activities about RCC RAI in China

Yuping Yan

Beijing Climate Center, CMA

February, 2007





- International collaboration research
- International workshops and seminars
- Network for using SI forecast products
- Training and international visiting scholar exchanges
- The WMO East Asian Monsoon Activity Center and the WMO Global Producing Center for Long-Range Forecast (GPC-LRF)





## International collaboration research



Experts from World Bank investigated wind energy assessment at China Meteorological Administration. Scientists from BCC joined the discussion.



Dr. Jerome Chappellaz, famous glaciologist, Deputy Director of Laboratory of Glaciology and Geophysics of the Environment -National Scientific Research Center (LGGE/CNRS), France, in the lecture, July, 2006.



Prof. Zhang De'er introducing the rare historical climatic records to Prof. James R. Fleming, former chairman of ICHS, and Prof. Comelia Ludecke, present chairman of ICHS.



Dr. JoseLuis Camacho, Director-General of Centro Internacional para la Investigacion del Fenomeno de El Nino (CIIFEN), visiting BCC and LCS, April, 2006.







# International workshops and seminars



**WMO 10<sup>th</sup> SYMET**

Mr. Michel Jarraud, Secretary-General of WMO visited BCC.



# Network for using SI forecast products



Beijing Climate Center - Microsoft Internet Explorer

地址: http://bcc.cma.gov.cn/Website/index.php?ChannelID=3

北京气候中心

Home | Sitemap | Chinese

**Products**

- ▶ Drought Monitoring
  - Daily Drought Monitoring
  - Soil Relative humidity
  - Monthly Drought Monitoring
  - Satellite Drought Monitoring Products
  - Newest Drought Products
  - Regional Drought Monitoring
- ▶ Monitoring Diagnosis
  - Climate System Monitoring Bulletin
  - East Asian Monsoon
  - Ice-Snow Monitoring
  - Global Extreme Weather and Climate Monitoring
  - El Nino/Southern Oscillation Monitoring
- ▶ Climate Prediction
  - Modeling Products(trial)
    - Monthly Dynamical Extended
    - Assembly Prediction
      - Ocean-air Coupled Model Seasonal Prediction
      - Regional Model Seasonal Prediction in East Asia
      - ENSO Model Prediction
    - Operational Products (formally issued)
    - Special Service (custom made)
- ▶ Impact Assessment
  - Climate Monitoring of China
  - Climate Impact Assessment of China
  - Major and Extreme Weather/Climate

Human Activity

Biosphere

Petrosphere

Atmosphere

Oceansphere

Cryosphere

Internet

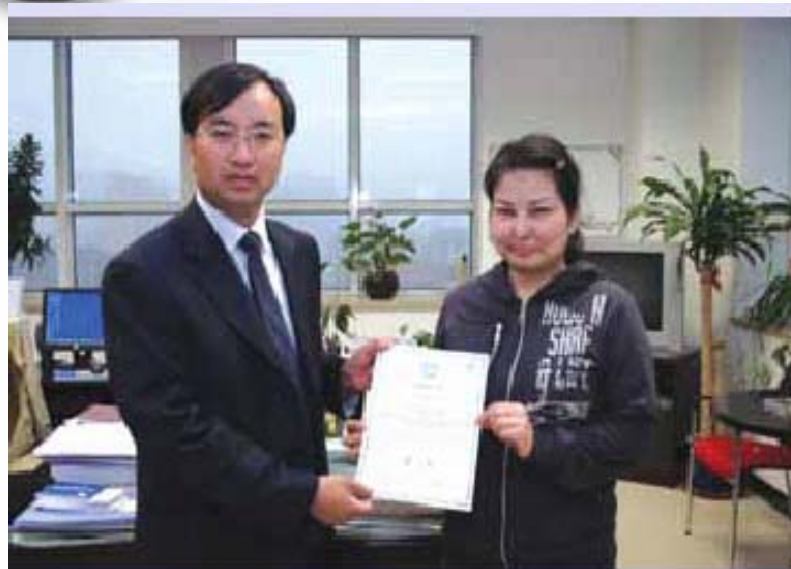
Network for using SI forecast products is set up between BCC and the provincial meteorological agencies in China, Korea, Pakistan and Nepal in Asian region and CIFEN in South America. Other institutions in Africa also use BCC's climate products. The network welcomes more institutions to participate and contribute.







# Training and international visiting scholar exchanges



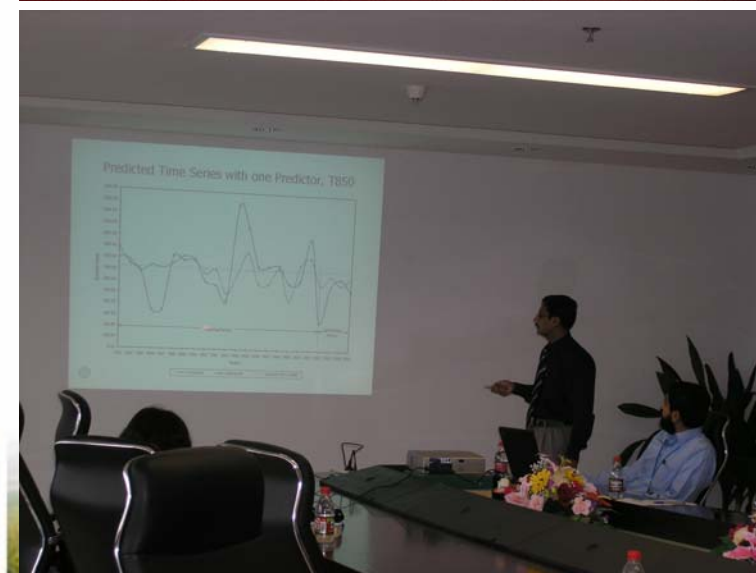
## Oman Climate Variability and Extremes

### BCC Scholarship Visit Report March-June 2006

Said Hamed AlSarmi  
Sultanate of Oman  
DGCAM  
Email: [salsarmi@mct.gov.om](mailto:salsarmi@mct.gov.om)

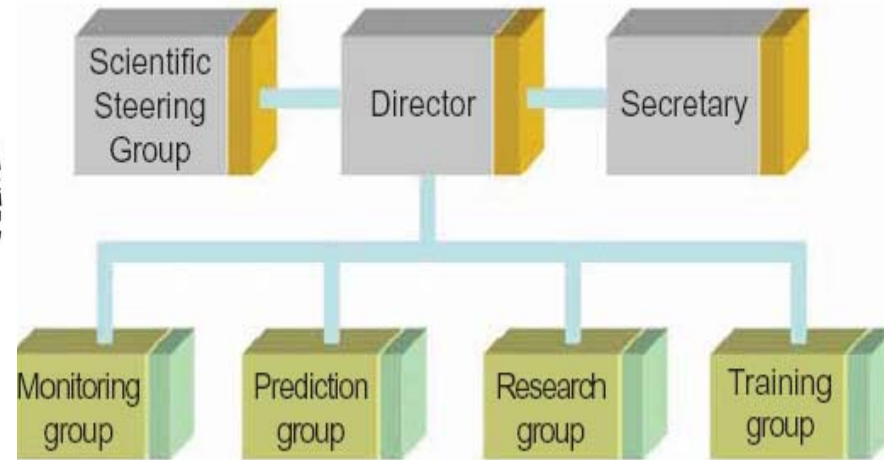
Supervisor  
LIU Hongbin Ph.D./Prof.  
BCC  
CMA  
Email: [liuhb99@cma.gov.cn](mailto:liuhb99@cma.gov.cn)

CMA - China  
25 May 2006





# WMO East Asian Monsoon Activity Center



## Functions:

- to improve the ability of monitoring, prediction and operational services on East Asian monsoon;
- to offer trainings on East Asian monsoon;
- to organize and coordinate research activities on East Asian monsoon.

## WMO Global Producing Center for Long-Range Forecast







# Internet Websites



<http://bcc.cma.gov.cn>

<http://www.rccra2.org>

Beijing Climate Center - Microsoft Internet Explorer

文件(F) 编辑(E) 查看(V) 收藏(A) 工具(T) 帮助(H)

地址(D) <http://bcc.cma.gov.cn/bcc/main.htm>

链接 免费的HotMail 自定义链接 Internet 起始页 Microsoft Windows Update 频道指南

The Regional Climate Centers in WMO RA II

Home | Sitemap | contact us

WMO

About RCCs RA II \* News \* Documents \* Products \* Data&Software \* Meeting&Seminar \* Education&Training \* Publications

**Products**

- Monitoring
- Prediction
- Impact Assessment
- Scenario Project

**Data&Software**

- Model Output
- Monitoring Data
- Experiments
- Software Download

**Meeting&Seminar**

- CCF(Climate Change Forum)
- CSM(Climate System Modeling)
- SIF(Seasonal/Interannual Forecast)
- CIA(Climate Impact Assessment)

**Documents**

- Extract\_from\_Manual\_on\_GDPS
- Extract\_paras\_ECLIV\_CGXIV
- Final\_Report\_RAIV\_AdHocExp
- Final\_report\_Spanish\_ARIV
- FinalReport\_WP (Erfurt)rev

**Education&Training**

- Scientific training
- Post-Graduate Education Program
- Summer School

**Links**

- World Meteorological Organization

**RCCs RA II News**

**Climate in the world in November 2006** **NEW**  
During November 2006, monthly mean surface air temperatures were 2-4°C above normal in most Europe, most of central and e.....  
[Detail]

**Major Weather and Climate Events During August 2006 in the world** **NEW**  
During August, three typhoons landed on southeastern coasts of China and resulted in at least 499 people dead, 176 people missing, 27.48 billion.....  
[Detail]

**BCC Provided Latest Climate Prediction Services for the Three Gorges** **NEW**  
Since mid-August of this year, BCC has provided the latest rolling model prediction for the Three Gorges every five days. The Semi.....  
[Detail]

**TCC News** **NEW**  
<http://okdk.kishou.go.jp/news/tccnews03.pdf> .....  
[Detail]

**WMO statement on the status of the global climate in 2005** **NEW**  
Since 1993, WMO, through its Commission for Climatology and in cooperation with its Members, has issued annual statements on the status of the global climate. This year's st.....  
[Detail]

**LATEST FEATURES**

**China Drought & Flood Monitoring**  
The latest distribution of Drought-Flood over China, updated daily, refer to PRODUCTS for more information.....

**ENSO**  
Look over the Nino Index to know the status of ENSO evolvment, refer to ENSO REPORT for more information....

**30-day Forecast by Climate Model**  
Output from experimental operation run of dynamical climate model prediction system updated every 10-day, refer to MODEL PRODUCTS for more information....

**Global Sea Surface Temperature Anomaly**  
Conducted by Global Ocean Data Assimilation System updated monthly and click here for data downloading, refer to GODA for more information.

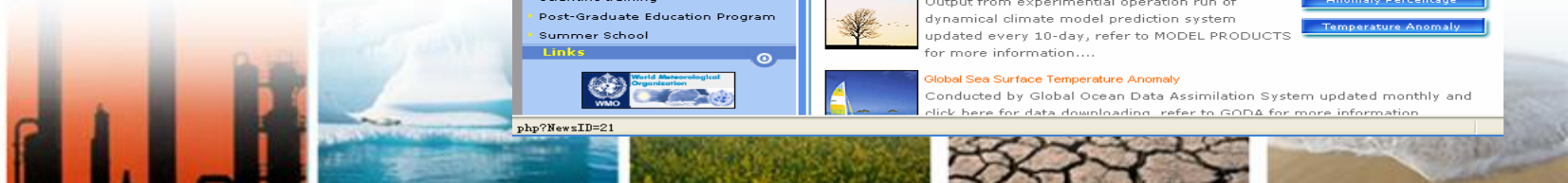
**Month-to-Date**

- Accumulated Precipitation
- Anomaly Percentage
- Temperature Anomaly

**Season-to-Date**

- Accumulated Precipitation
- Anomaly Percentage
- Temperature Anomaly

php?NewsID=21







# BCC Needs your Contribution!

# Thanks!

