



Wednesday, May 3

Session 6: Decision Support Services

Development of Climate Risk Management Techniques for Agriculture at JMA

Nobuyuki Kayaba, Akina Yamada, Sakie Hira, and Masayuki Kyouda

Climate Prediction Division,
the Global Environment and Marine Department,
Japan Meteorological Agency

15th Annual Climate Prediction Applications Science Workshop (CPASW)
May 2-4, 2017
Anchorage, Alaska



Outline

1. Introduction and motivations
2. Pilot Project to Develop Climate Risk Management Techniques for Agriculture
3. Developed Products
4. Summary and Future issues for practical use



JMA Weather/Climate information

Today

Tomorrow

One week

One month

Three month

Nowcasts

Warnings/
Advisories

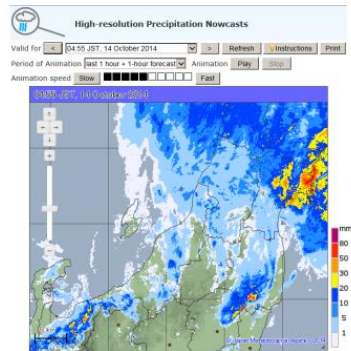
Weather forecasts

One-week forecasts

Early warning information
on extreme weather

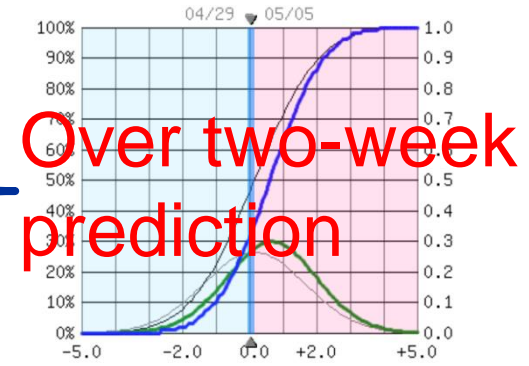
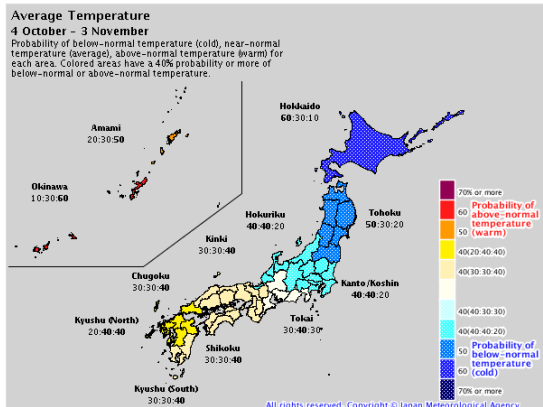
One-month forecasts

JMA forecasting services cover
a wide range of meteorological
information.



Updated at 05:00 JST, 10 March 2015

Date	10 Tue	11 Wed	12 Thu	13 Fri	14 Sat	15 Sun	16 Mon
Tokyo							
Daily Forecast							
Probability of Precipitation (%)	~10/20/10	0/10/10/0	10	20	20	50	40
Reliability	/	/	A	A	A	C	C



Seasonal forecasts/
El Niño outlook



Introduction and motivations

JMA expect its climate information to be used practically in agricultural sector for **assessment** the influence of extreme weather and climate for the **adaptation**.



JMA takes activities to develop best practices of the use of long-range forecasting in collaboration with user-sector organizations.

JMA and the Agricultural Research Institute (National Agricultural and Food Research Organization:NARO) have **Pilot Project** to “Develop Climate Risk Management Techniques for Agriculture” from 2011 to 2016※.

※ In 2016 the summary of the detailed report of these activities were published (in Japanese).
http://www.data.jma.go.jp/gmd/risk/nogyo_hokoku.html

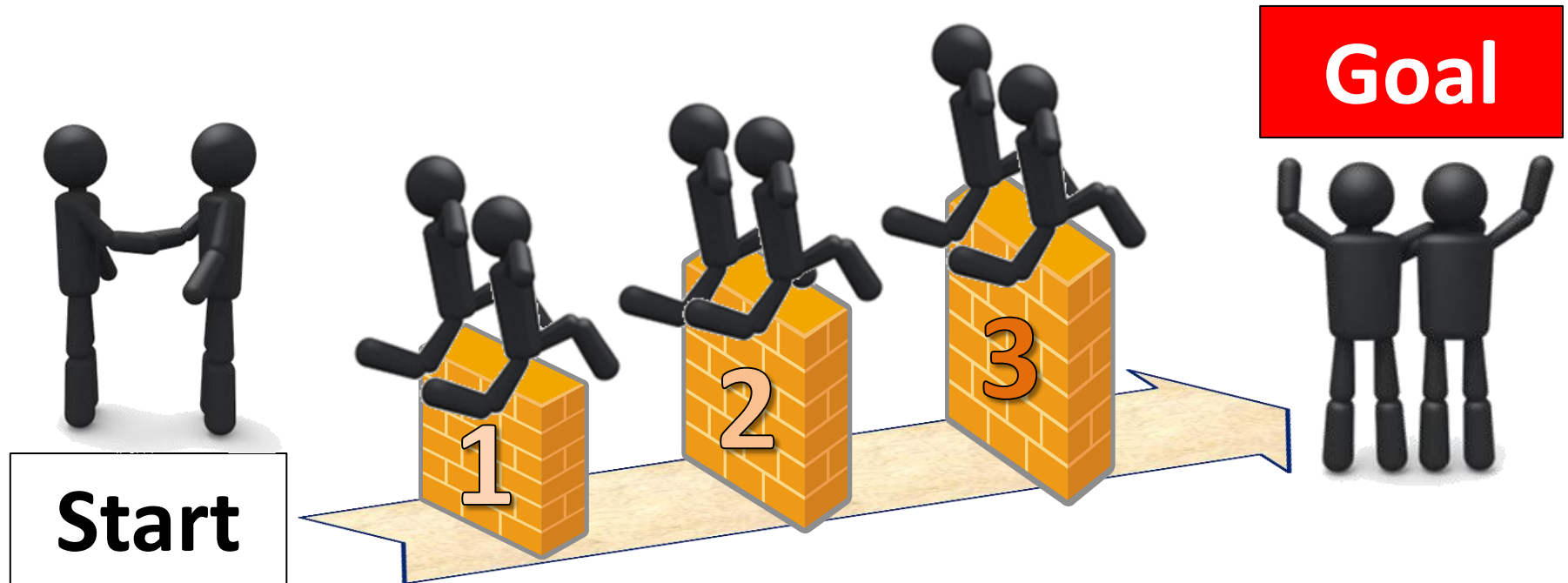


Outline

1. Introduction and motivations
2. Pilot Project to Develop Climate Risk Management Techniques for Agriculture
3. Developed Products
4. Summary and Future issues for practical use



Key processes of Pilot Project



1. Dialogue & Sharing knowledge

2. Joint technology development

3. Expansion of best practices



Wheat Calendar in Japan

dry season

wet season

Nov. ...

Apr.

May

June

plant



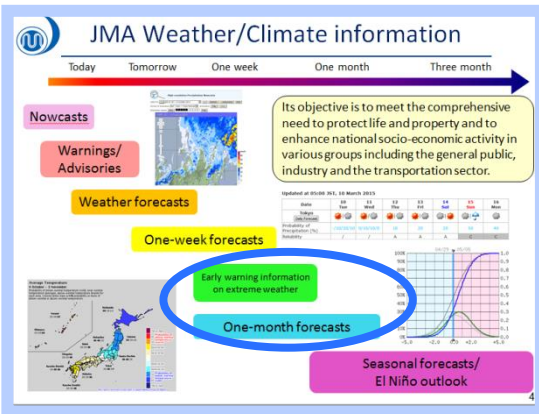
- In Japan the wet season gradually begins in May.
- Wheat come into flower in around May.
- Farmer have to reserve a herbicide duster **over two weeks before**.

Risk of red mold disease of wheat raise



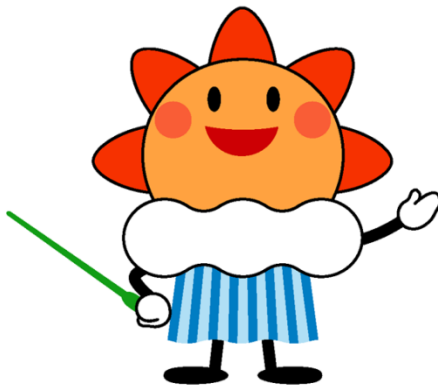


Dialogue & Sharing knowledge



Matching

reserve a herbicide duster
over two weeks
prediction



Provider
JMA



Collaboration!

To predict the day
of flower of wheat

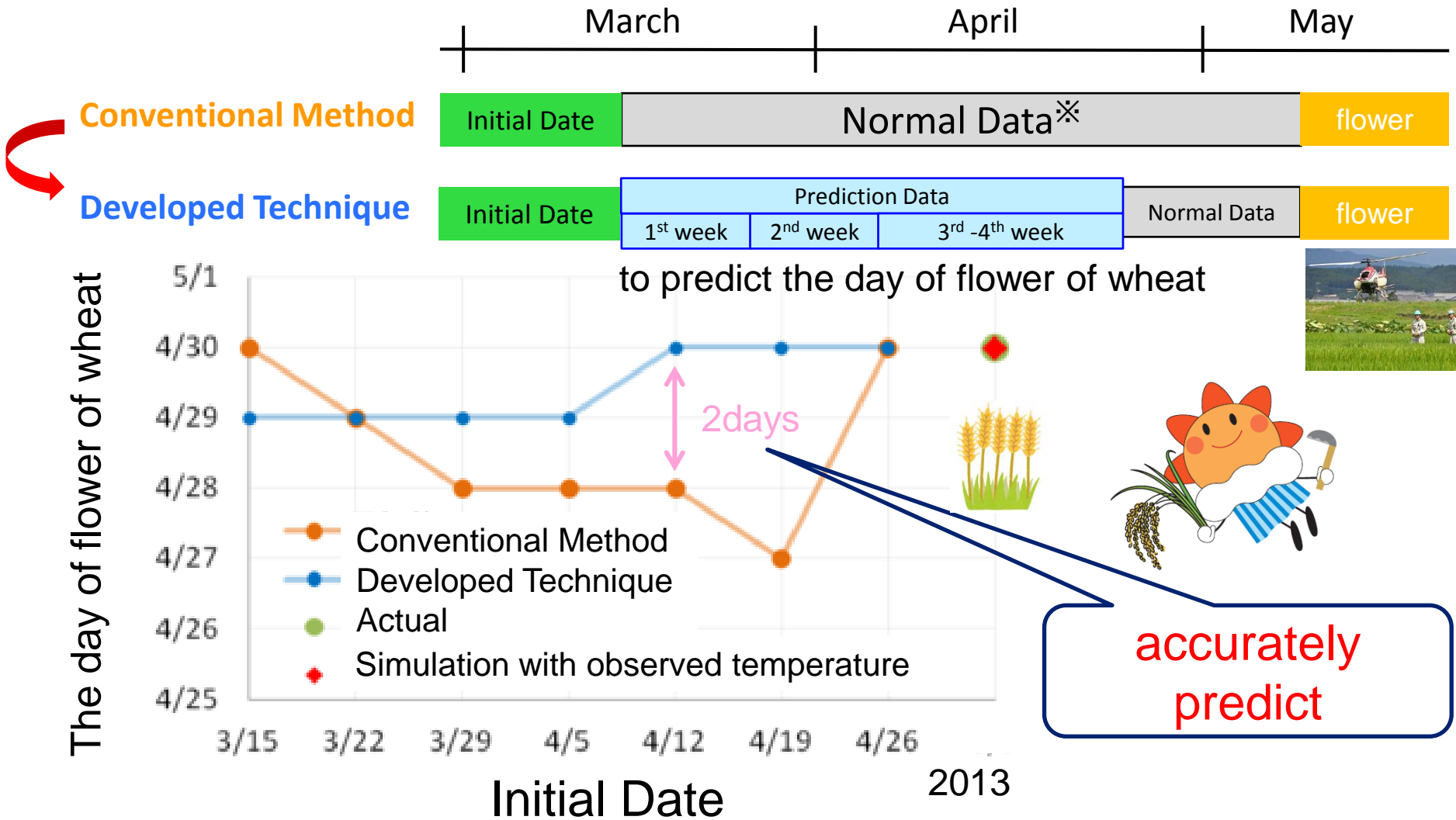


User/Intermediary
Agricultural
Research Institute
(NARO*)

* National Agriculture and Food Research Organization Agricultural Research Center



Joint technology development



Comparison of Conventional Method and Developed Technique

※ Normal data is based on the cumulative annual average over 30 years between 1981 and 2010

15th CPASW May 2-4, 2017



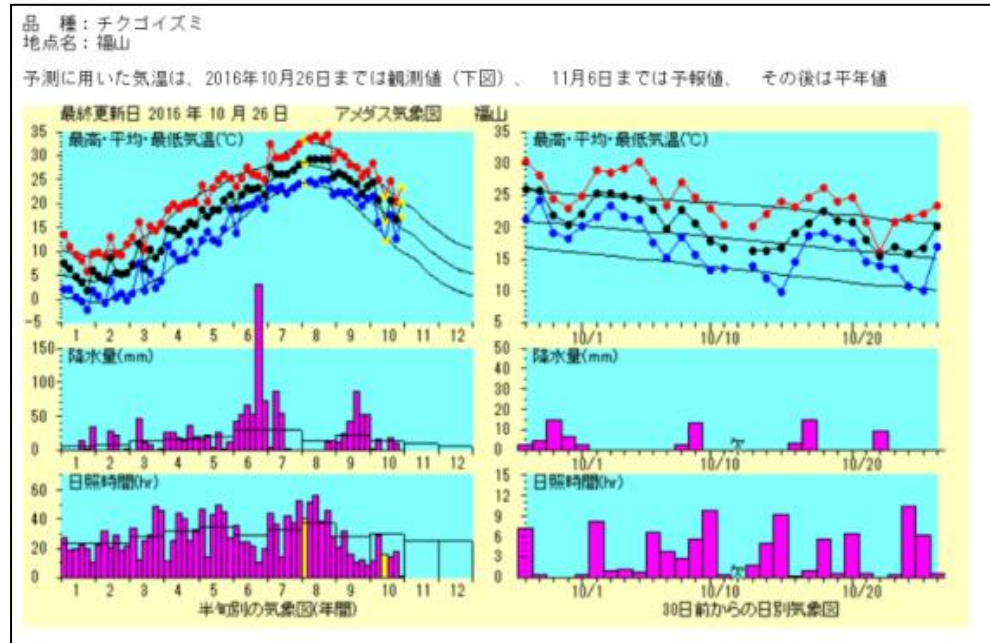
Outline

1. Introduction and motivations
2. Pilot Project to Develop Climate Risk Management Techniques for Agriculture
3. **Developed Products**
4. Summary and Future issues for practical use



Developed Products

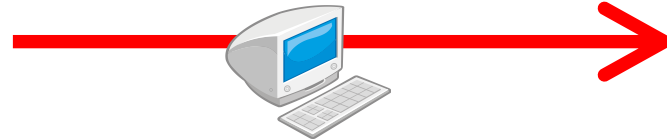
Website



http://www.naro.affrc.go.jp/org/warc/meteo_fukuyama/WEB/wheat/index_mugi.html

**Agricultural
Research
Institute
(NARO)**

**Tailored climate
information**



Farmers



Action!

Farmers can obtain the information at their desired points through the Internet.



Outline

1. Introduction and motivations
2. Pilot Project to Develop Climate Risk Management Techniques for Agriculture
3. Developed Products
4. Summary and Future issues for practical use



Summary

In addition to this project, there were various other technical developments.

**JMA conducted joint researches
with agricultural research Institutes (NARO) all over Japan.**

Hokkaido

Beating potatoes harmful
for field condition



Create a variety of success
cases of climate information
usage

Kinki-Chugoku- Shikoku

Prediction of Red mold
disease of wheat



Kyushu-Okinawa

Prediction of High-
Temperature Damage
Rice Grain



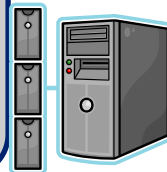
Tohoku

2-weeks ahead
Temperature prediction
for rice crops .etc



Kanto (Central)

Making data set of
weather information for
agriculture .etc



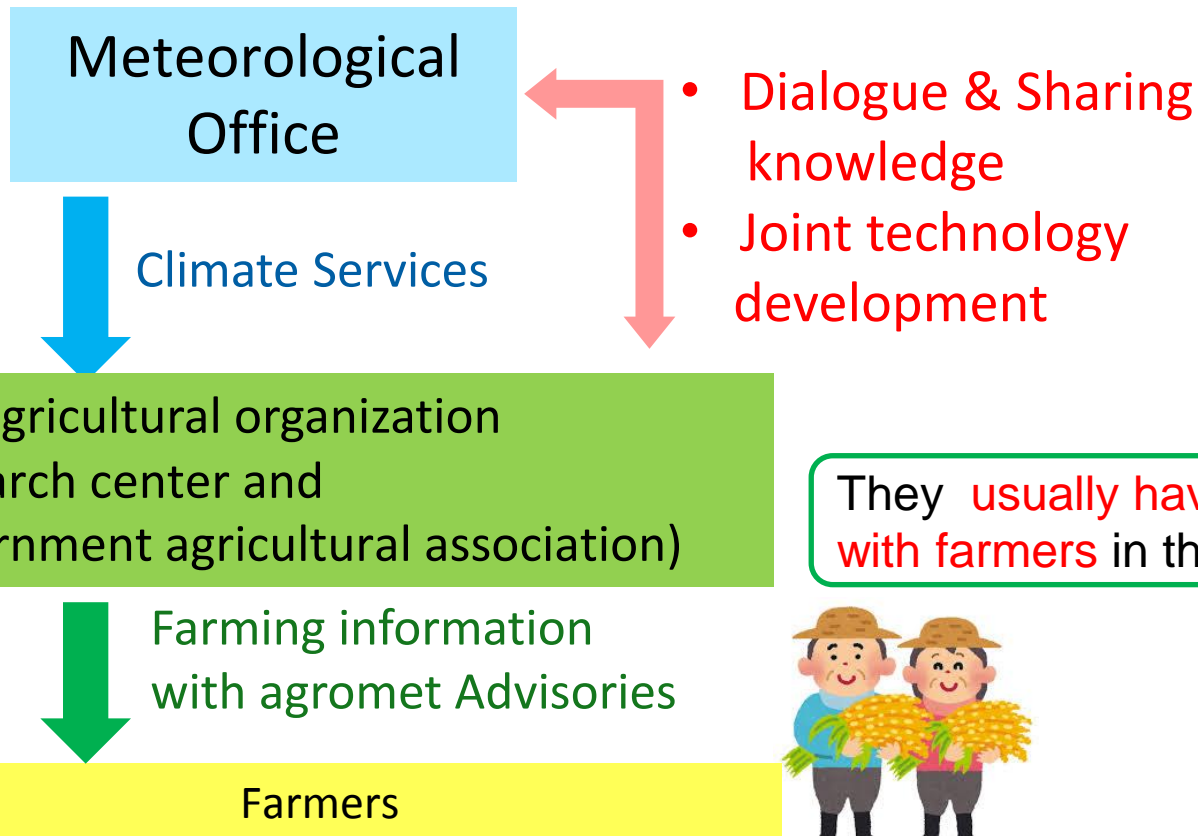
NARO are planning to launch the
cultivation management systems for
whole regions in Japan, to supply
stable farm products.



Future issues for practical use

Expansion is one of future issues for practical use

JMA makes effort to continue dialogue with local agricultural organization to promote a use of climate information in **agricultural decision-making**.



They **usually have close contact with farmers** in their territory

