

How to display ASWind data in SATAID software

1. Preparation to display wind data in SATAID software

- a. Registration of satellite image files
- b. Wind file path settings
- c. Label and file name settings
- d. Display wind data on satellite imagery

2. Useful functions to draw wind data

- a. Change color of wind barbs
- b. Draw vectors instead of wind barbs
- c. Display of AMV altitude information
- d. Display of wind barbs filtered by drawing condition
 - ✓ Wind speed selection
 - ✓ Filtering by AMV altitude information
 - ✓ Thinning wind barbs

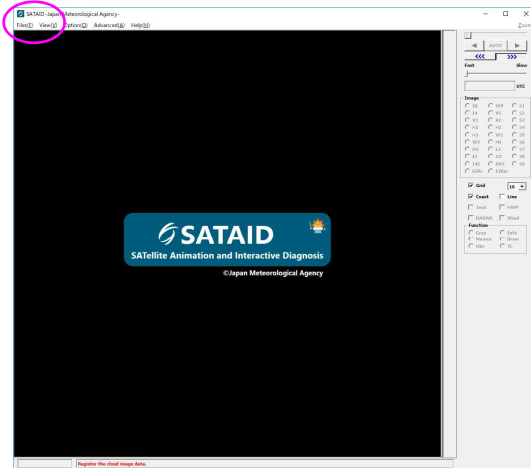
This guide describes how to display ASWind data (SATAIDWIND format) with using SATAID (SATellite Animation and Interactive Diagnosis) application (version 3.3.0.1), but does not explained the installation and data acquisition of SATAID software. If you want to know more about the software, please check SATAID information on WIS web site;

<https://www.wis-jma.go.jp/cms/sataid/>

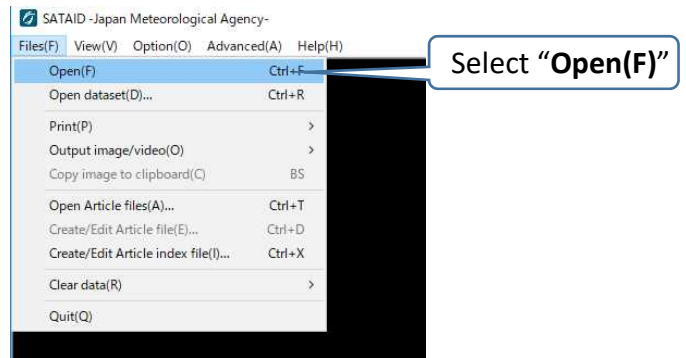
1. Preparation to display wind data in SATAID software

a. Registration of satellite image files

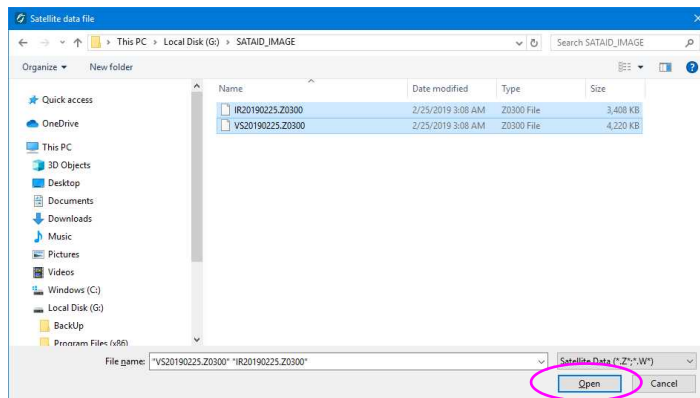
From left top menu bar, [Files] -> [Open]



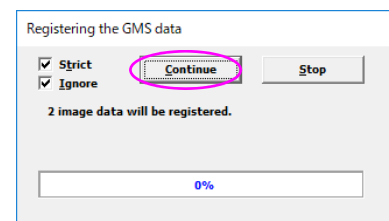
[main window]



After selecting SATAID files to be display, click **“Open”** button.

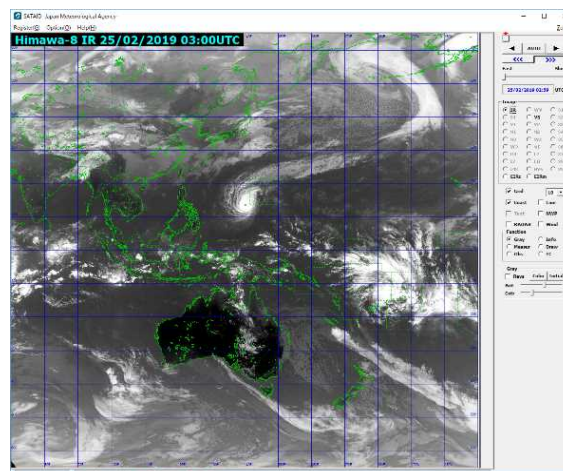


[data file selection window]



[registering satellite image data window]

After clicking **“Continue”** button on registering window, it starts registering data and satellite imagery is displayed on the main window.

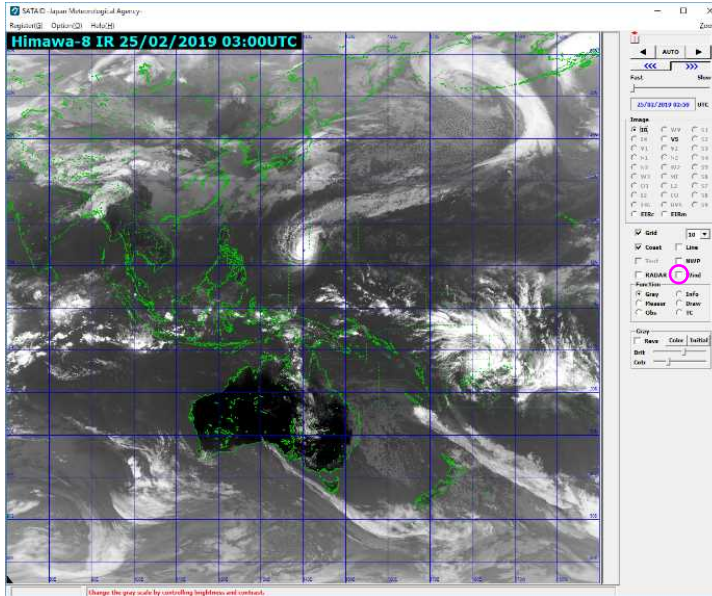


[main window; displayed satellite image]

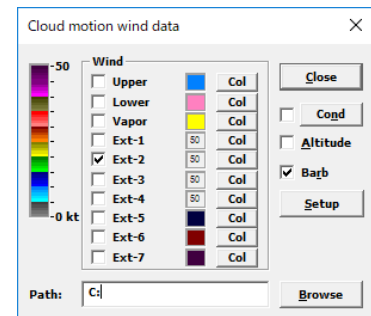
1. Preparation to display wind data on SATAID software

b. Wind file path settings

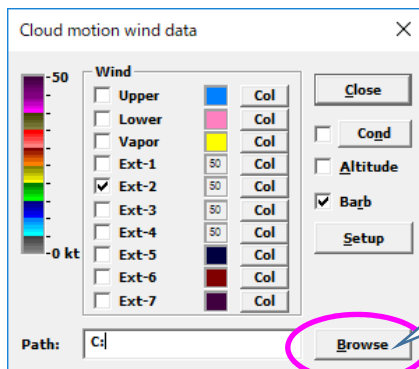
To set up labels and names of input wind data files, check “Wind” box and open wind data window.



[main window]



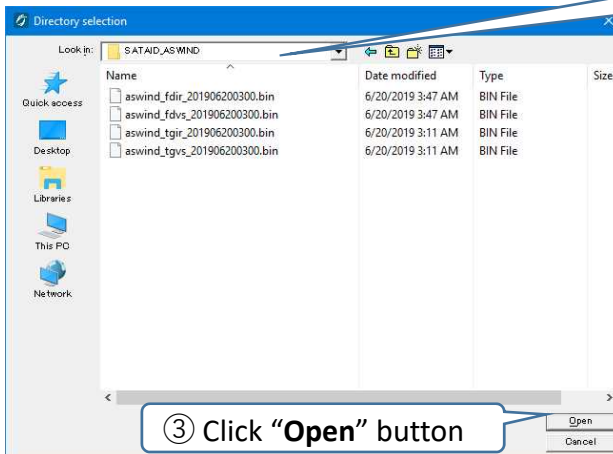
[wind data window]



① Click “Browse” button

[wind data window]

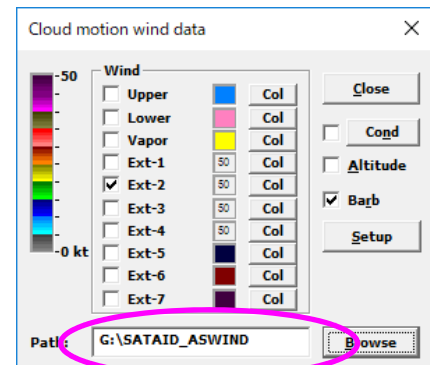
② Select directory where wind data files exist.



③ Click “Open” button

[directory selection window]

Wind data path was selected.

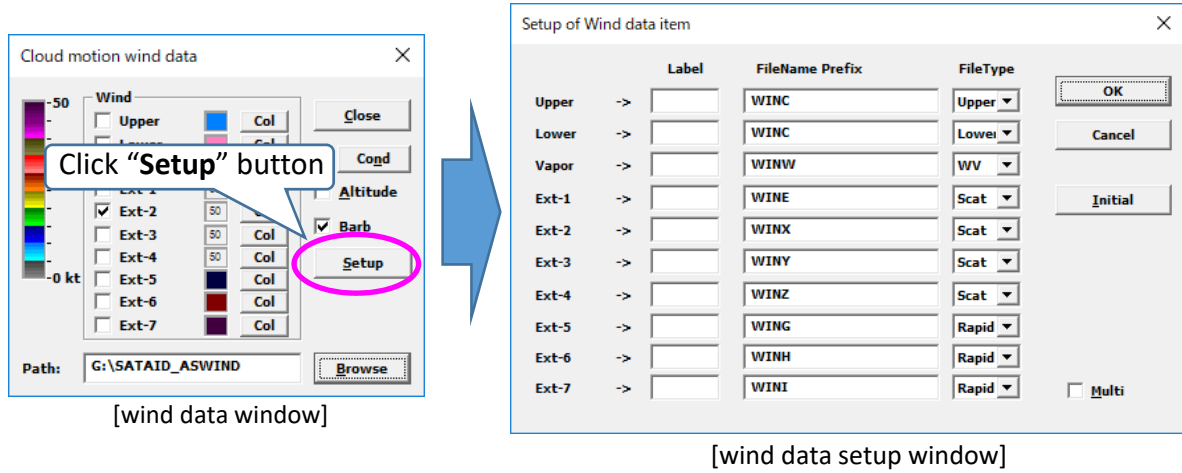


[wind data window]

1. Preparation to display wind data on SATAID software

c. Label and file name settings

Input labels and prefix names of wind data files.



Label:

It is displayed in wind data window and can be named in arbitrary.

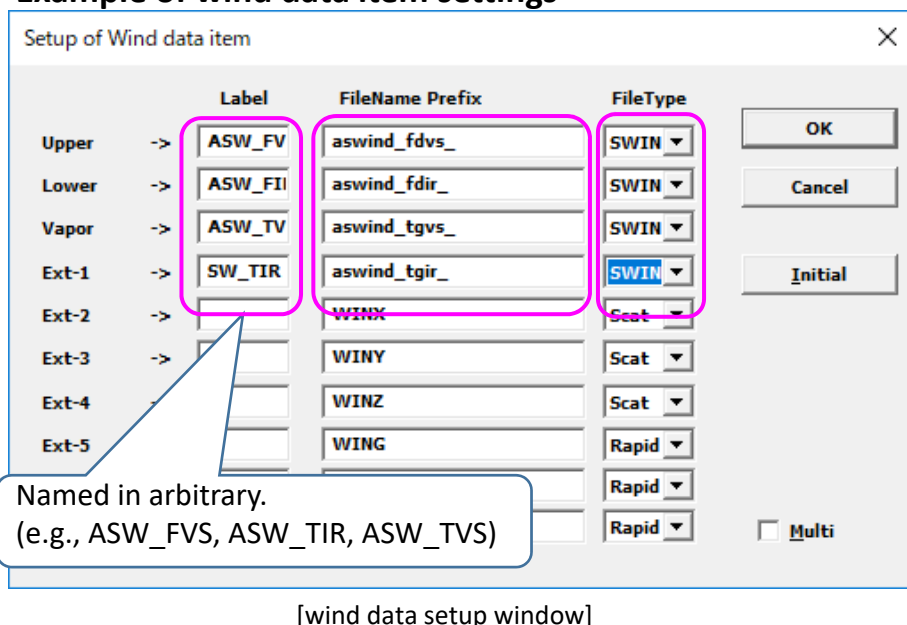
FileName Prefix:

Prefix names of wind files you want to display. If you want to display wind data, "aswind_tgvs_yyyymmddhnn.bin", the prefix name is "aswind_tgvs_".

File type:

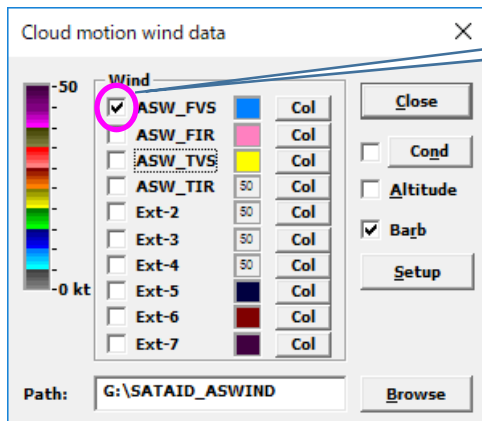
Wind file format. if you want to display SATAIDWIND data, "SWIN" should be selected.

Example of wind data item settings



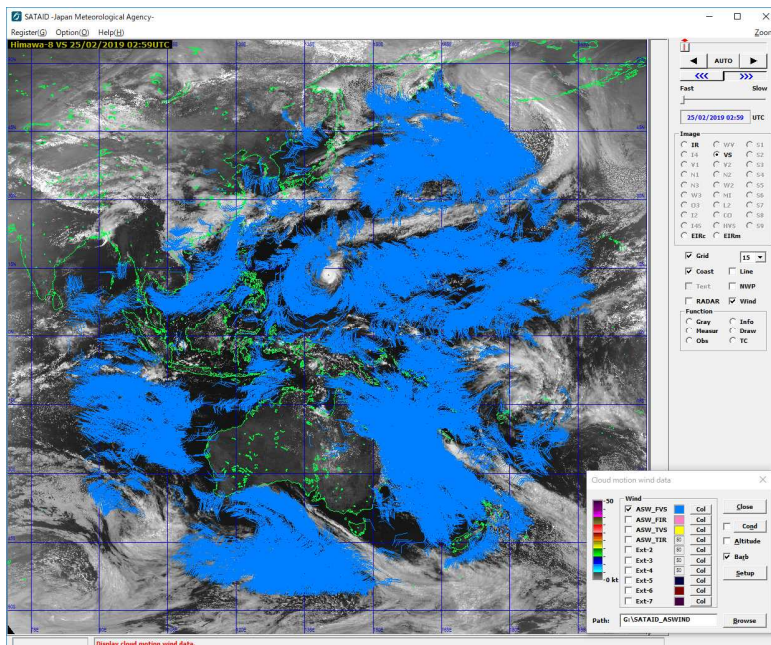
1. Preparation for displaying wind data on SATAID software

d. Display wind data on satellite imagery



Check the box next to label you want to display

[wind data window]

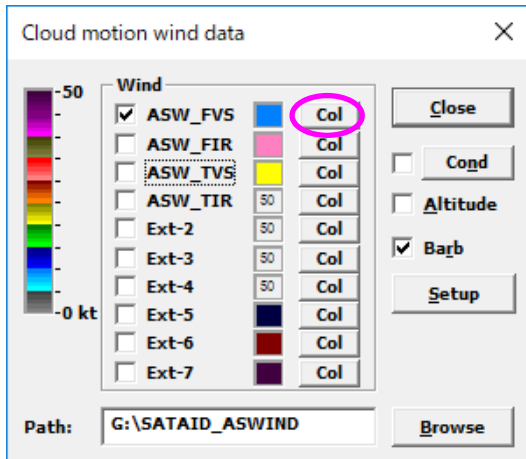


[main window; displayed wind data]

2. Useful functions to draw wind data

a. Change color of wind barbs

Wind barbs color can be changed by clicking “Col” button on wind data window. There are two scale color modes ([0-50kt] and [0-100kt]) and one fixed color mode.



[wind data window]

[ctrl] key + click “Col ” button :

Change color mode between fixed color and scale color [0-50 kt].

[shift]+[ctrl] keys + click “Col ” button :

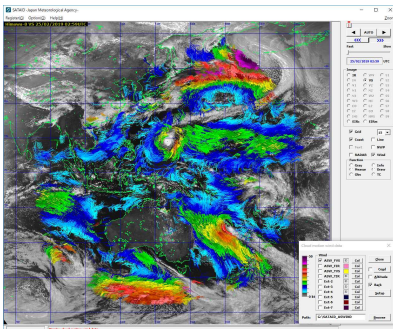
Change color mode between fixed color and scale color [0-100 kt].

Click “Col ” button :

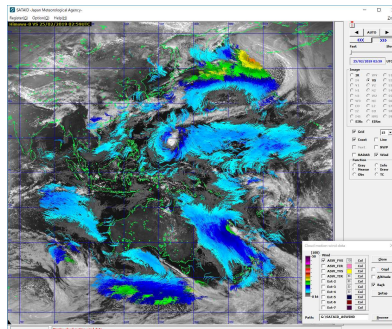
On fixed color mode, change color of wind barbs.

Color mode transition chart

Scale color mode [0-50kt]



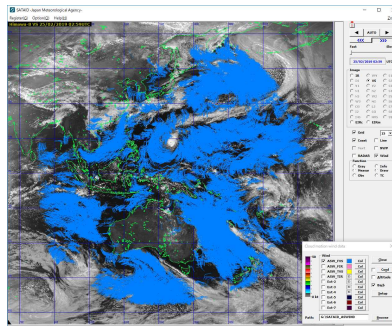
Scale color mode [0-100kt]



[ctrl] + click “Col ” button

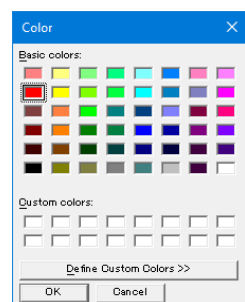
[shift]+[ctrl] + click “Col ” button

fixed color mode



Color Selection Window

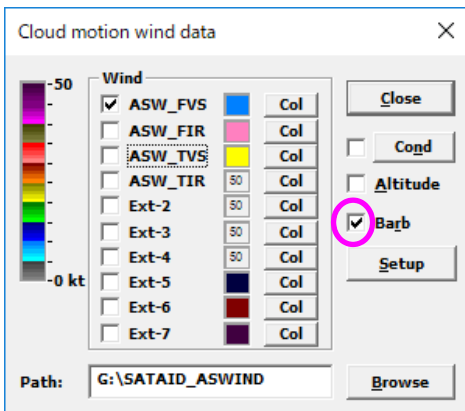
Click “Col”



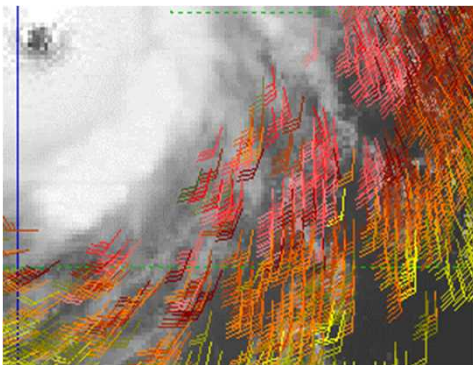
2. Useful functions to draw wind data

b. Draw vectors instead of wind barbs

Checked “**Barb**” box

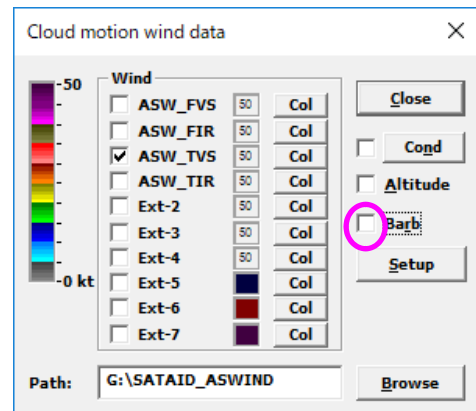


[wind data window]

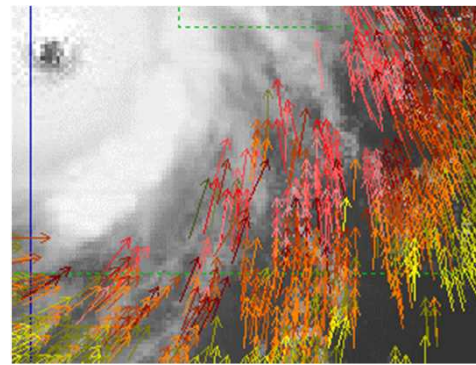


[drawn wind barbs]

Unchecked “**Barb**” box



[wind data window]

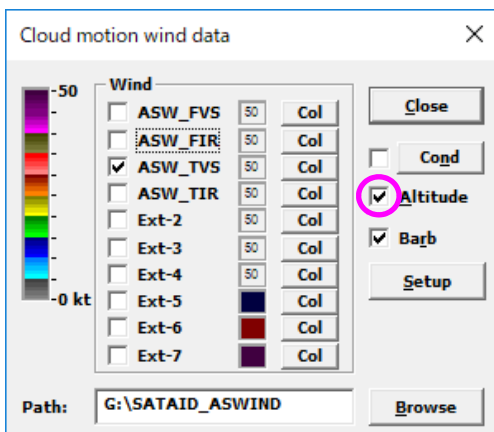


[drawn vectors]

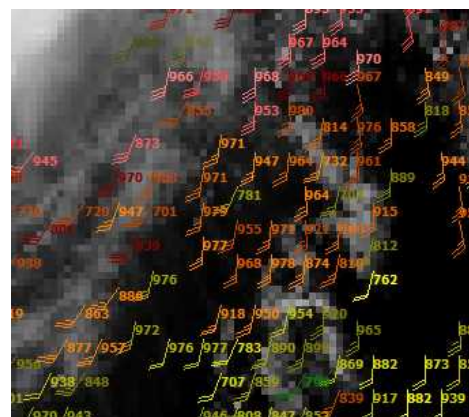
c. Display altitude information of AMVs

You can display altitude information [hPa] of original AMVs that are used for sea surface wind estimation.

Checked “**Altitude**” box



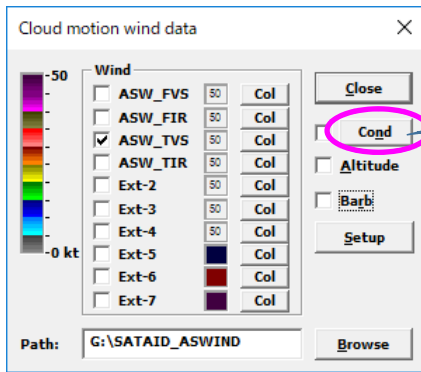
[wind data window]



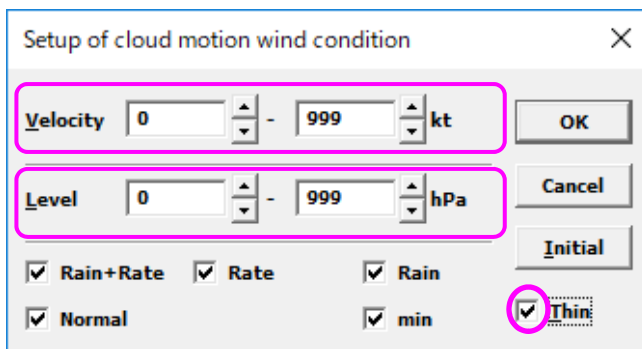
[added AMV altitude information]

2. Useful functions to draw wind data

d. Display of wind barbs filtered by drawing condition



[wind data window]



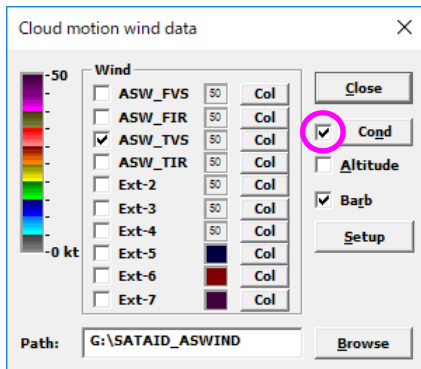
[wind condition setup window]

Velocity [kt]: Display winds selected by wind speed.

Level [hPa]: Display winds selected by AMV height information.

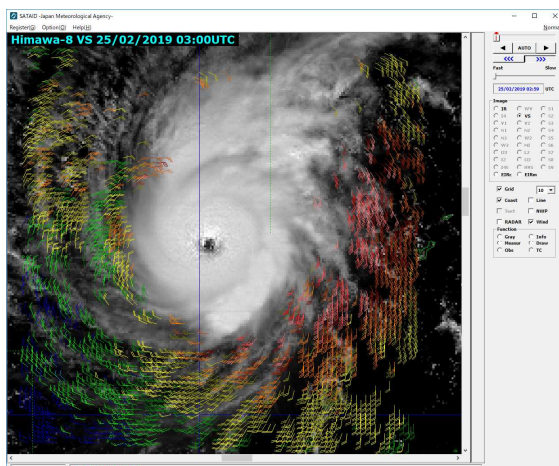
If checking **"Thin"** box, thinned winds are displayed.

After inputting values, click **"OK"** button and close wind condition setup window.

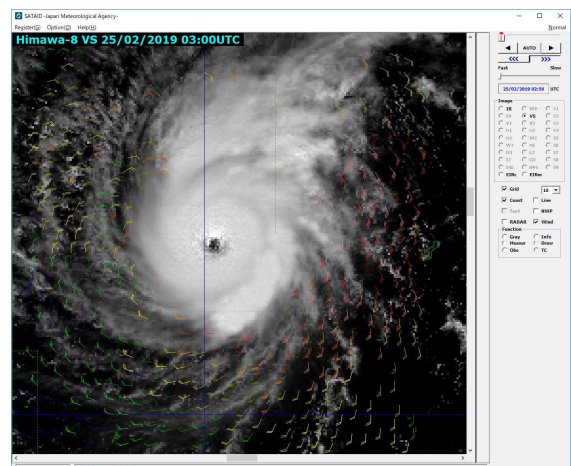


[wind data window]

After closing wind condition setup window, check the box next to condition button on wind data window to reflect the change.



[main window]



[main window; *thinned wind barbs*]