

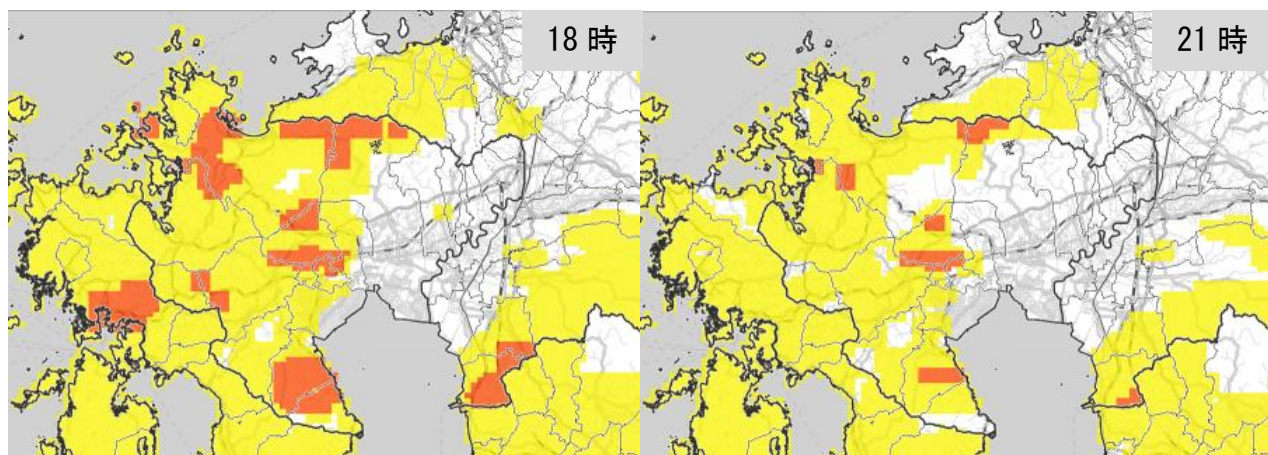
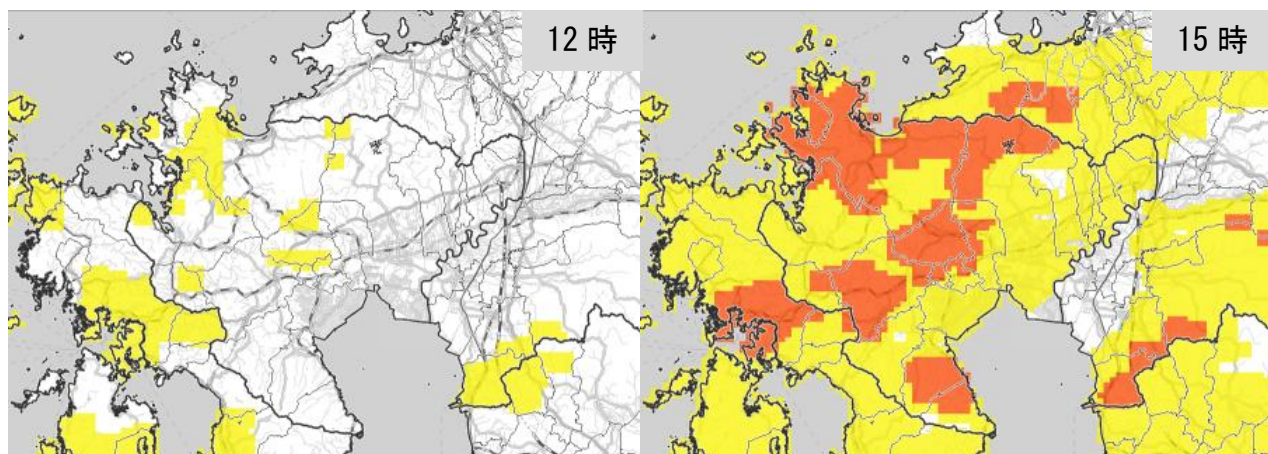
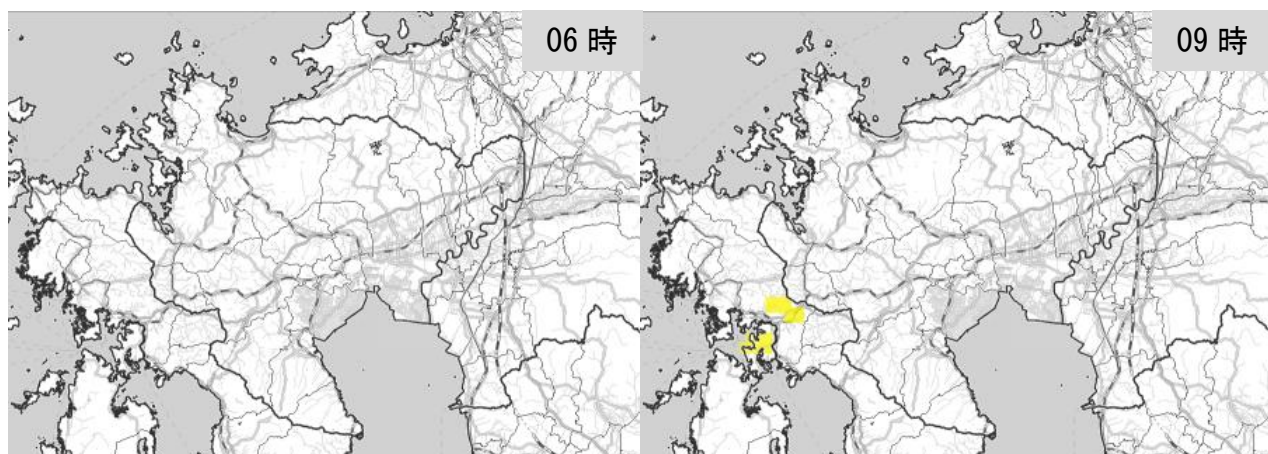
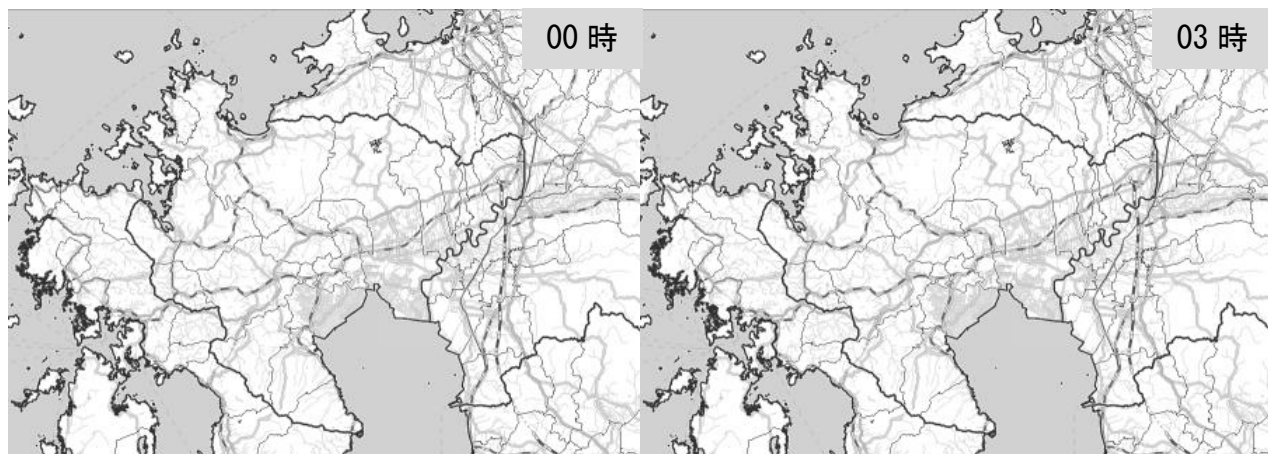
災害時気象資料別添

—令和3年8月11日から19日にかけての佐賀県の大雨について—

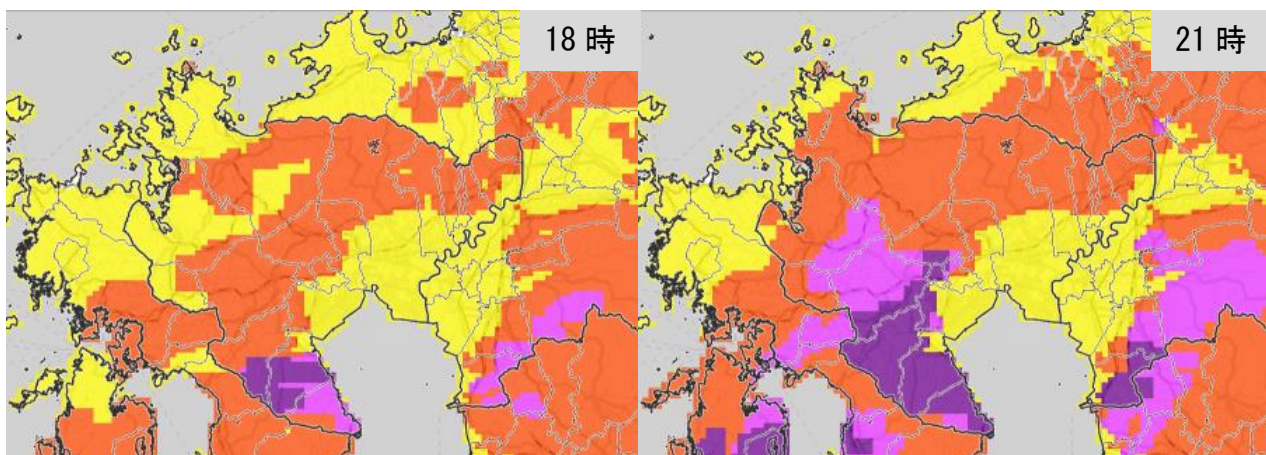
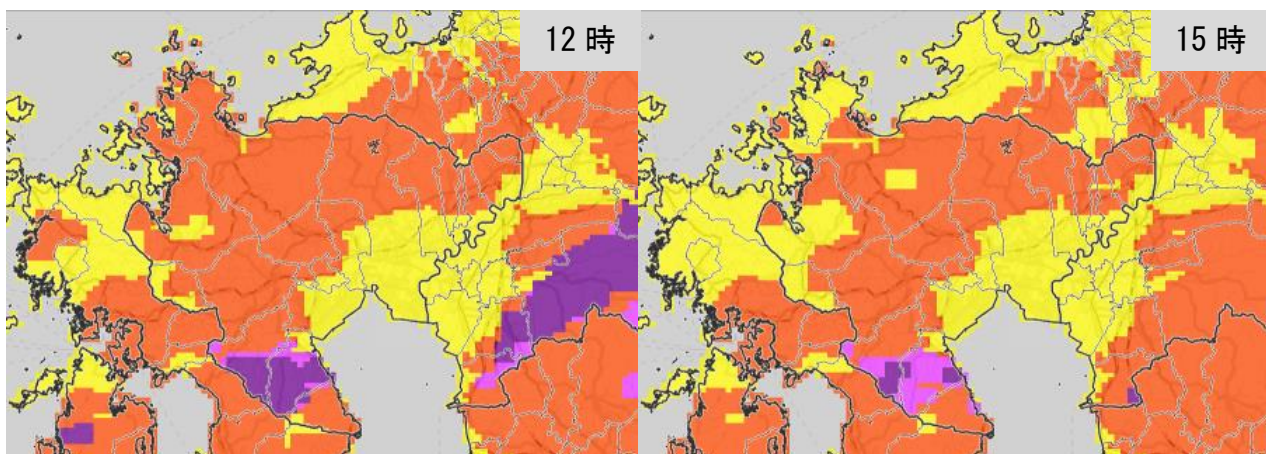
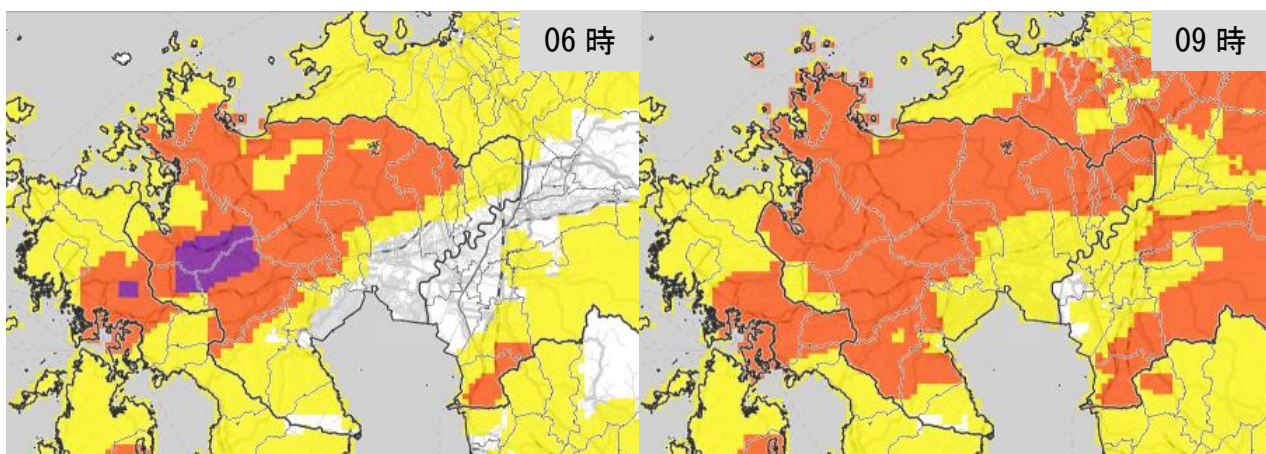
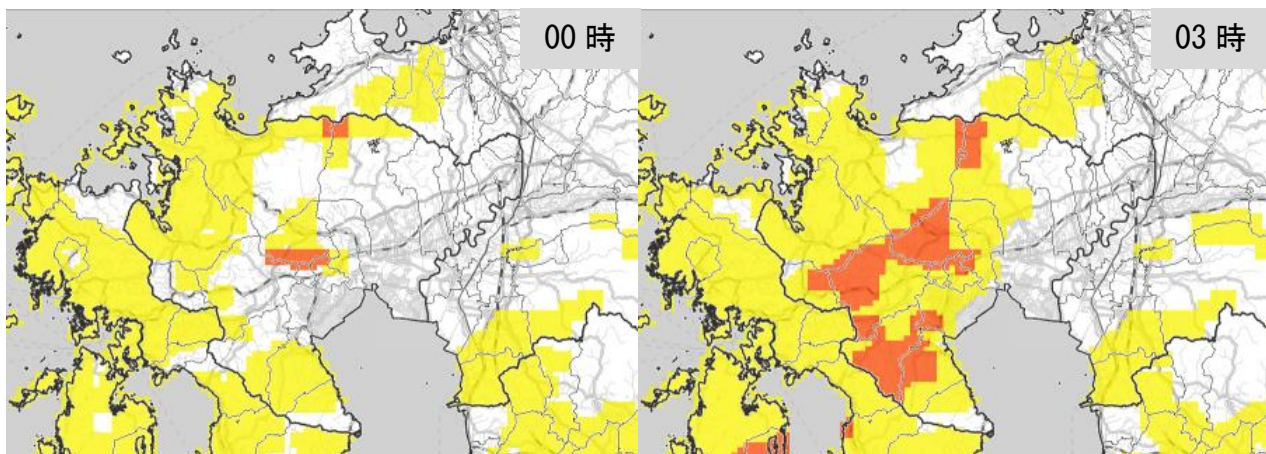
土砂キキクル（危険度分布）（佐賀県）	-----	1
浸水キキクル（危険度分布）（佐賀県）	-----	10
洪水キキクル（危険度分布）（佐賀県）	-----	19
凡例	-----	28

令和3年9月6日
佐賀地方气象台

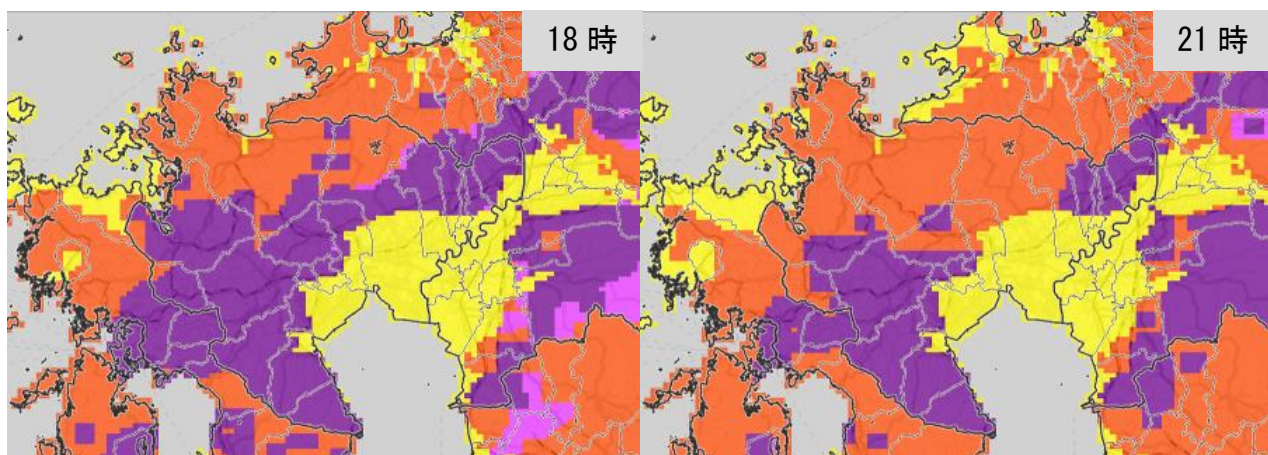
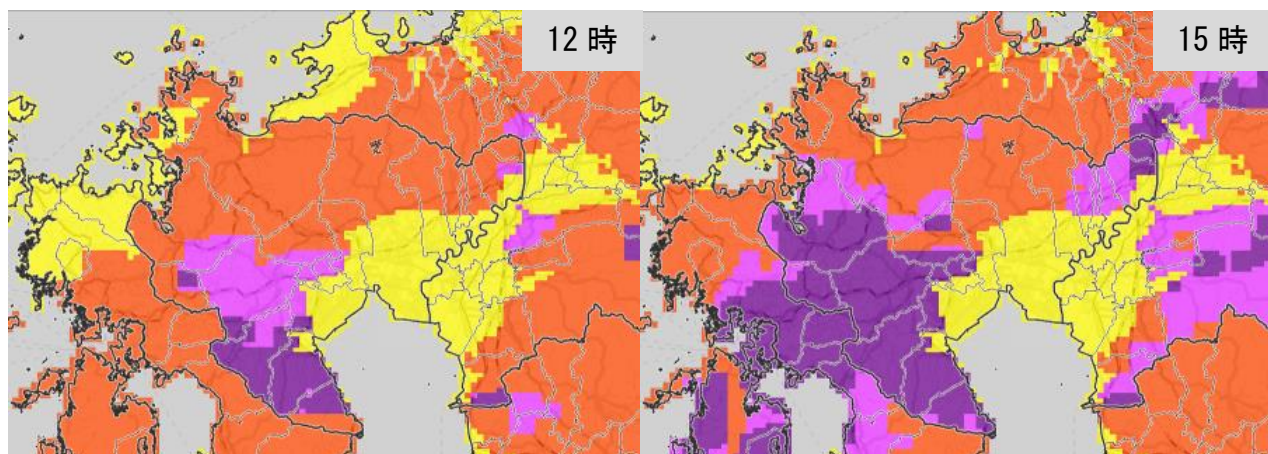
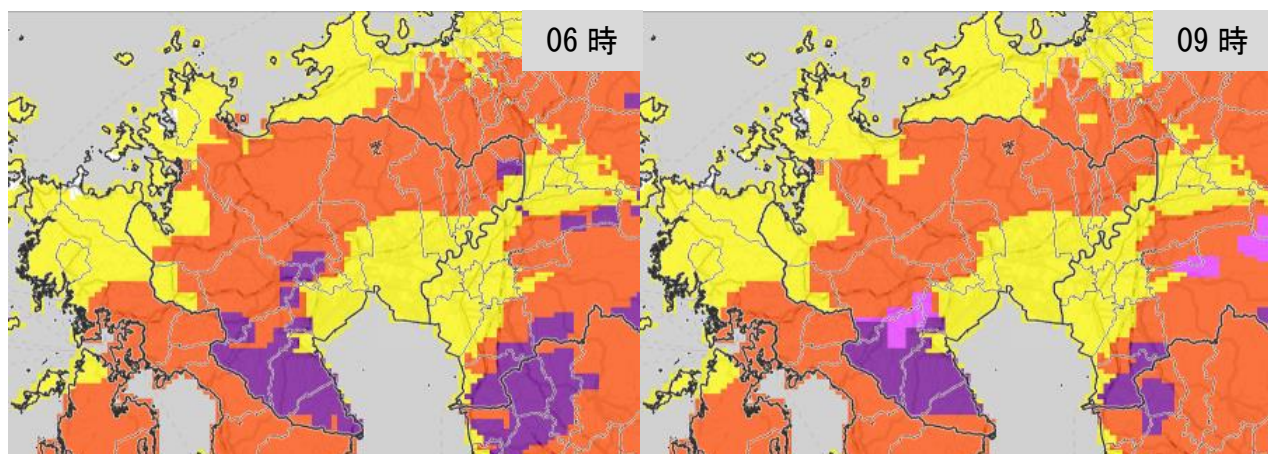
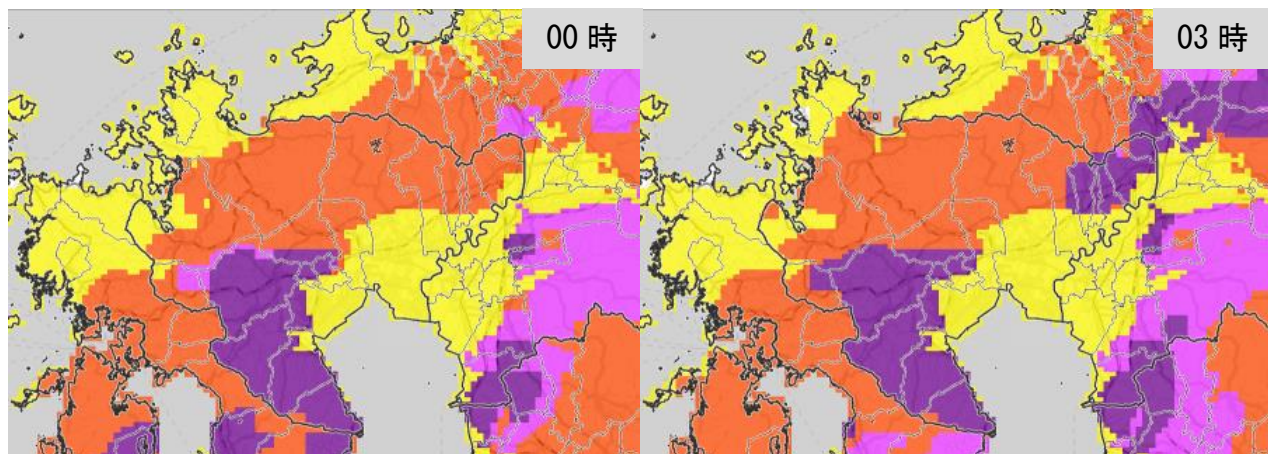
土砂キキクル（危険度分布） 8月11日00時～11日21時3時間毎



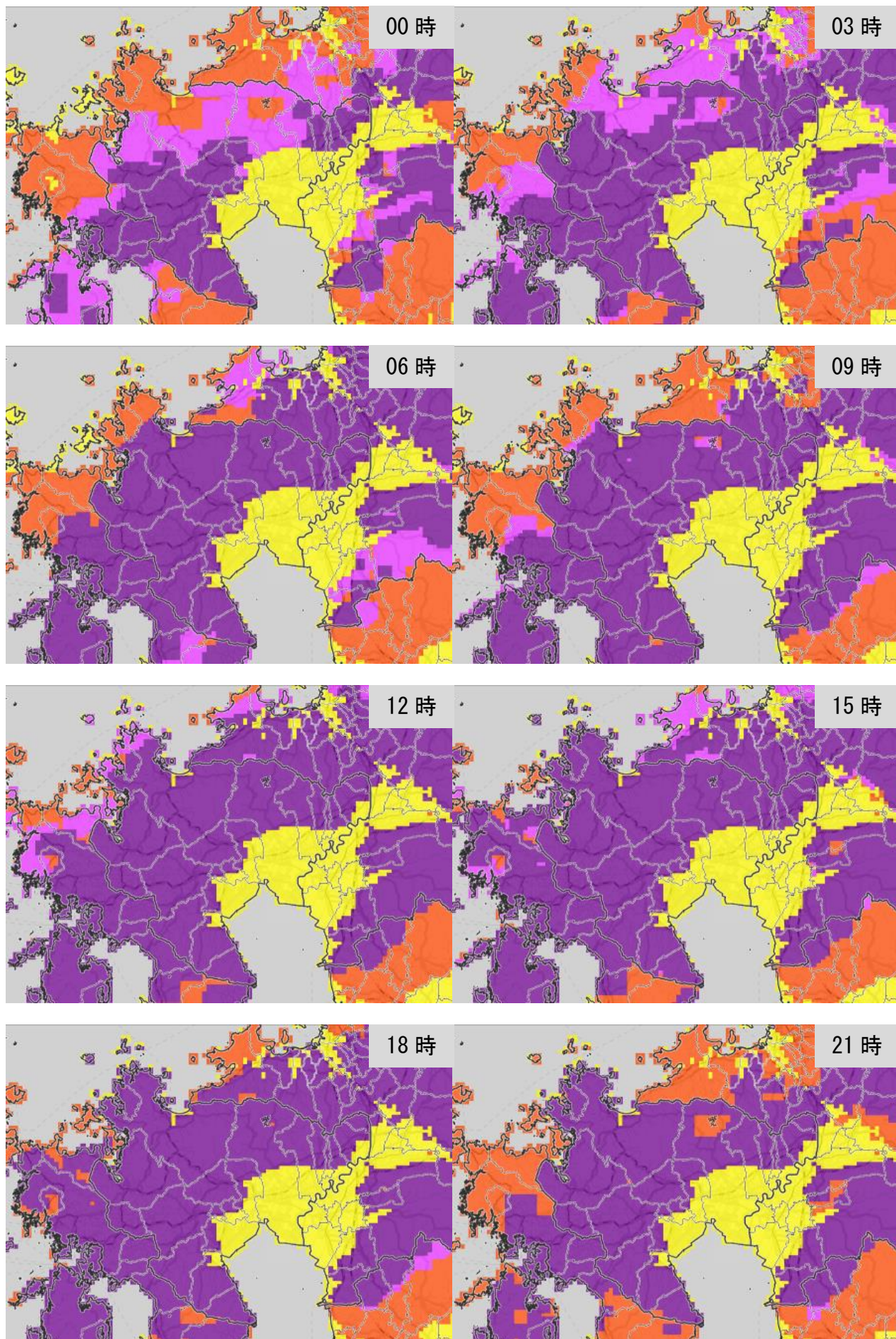
土砂キキクル（危険度分布） 8月12日00時～12日21時3時間毎



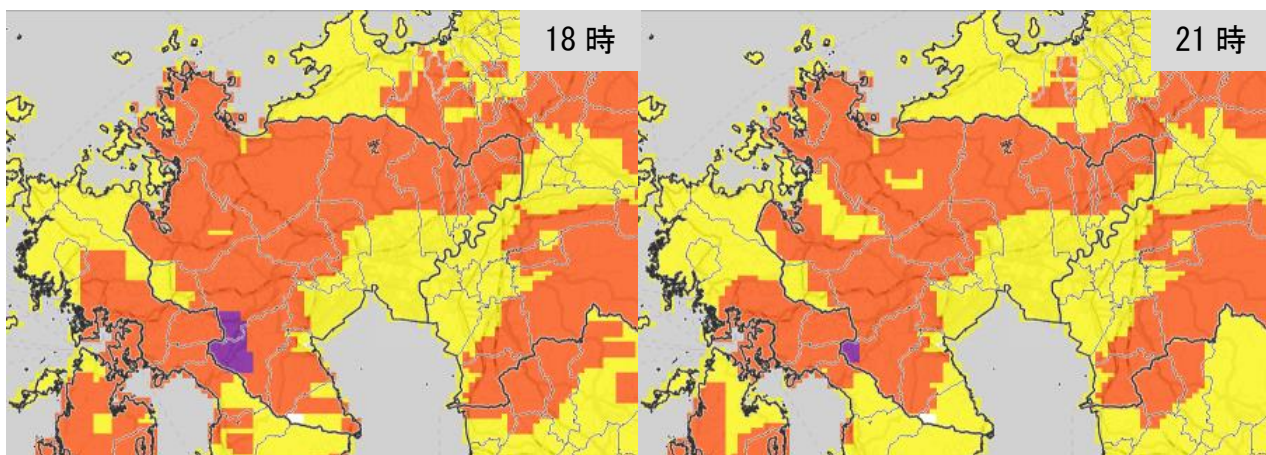
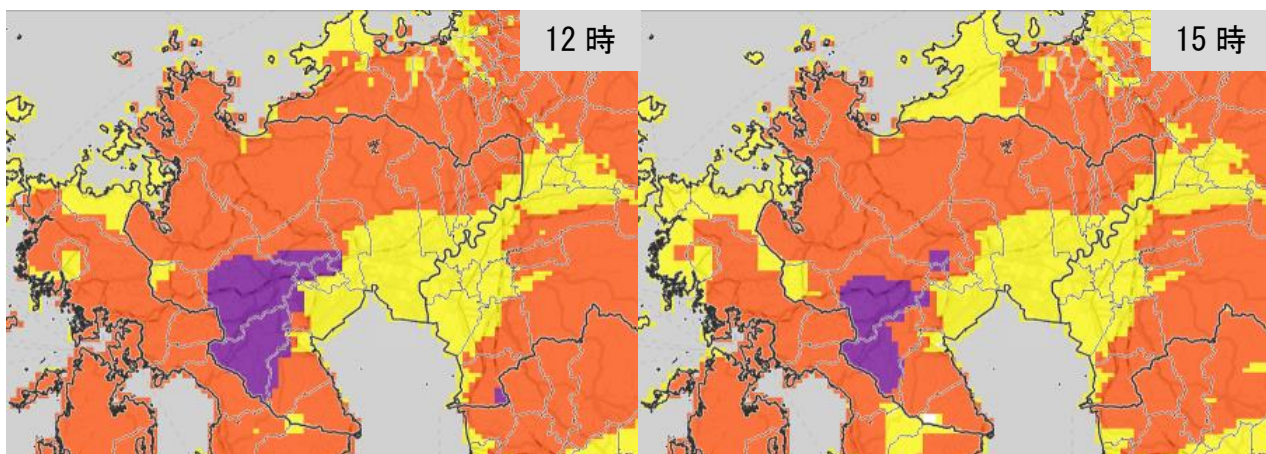
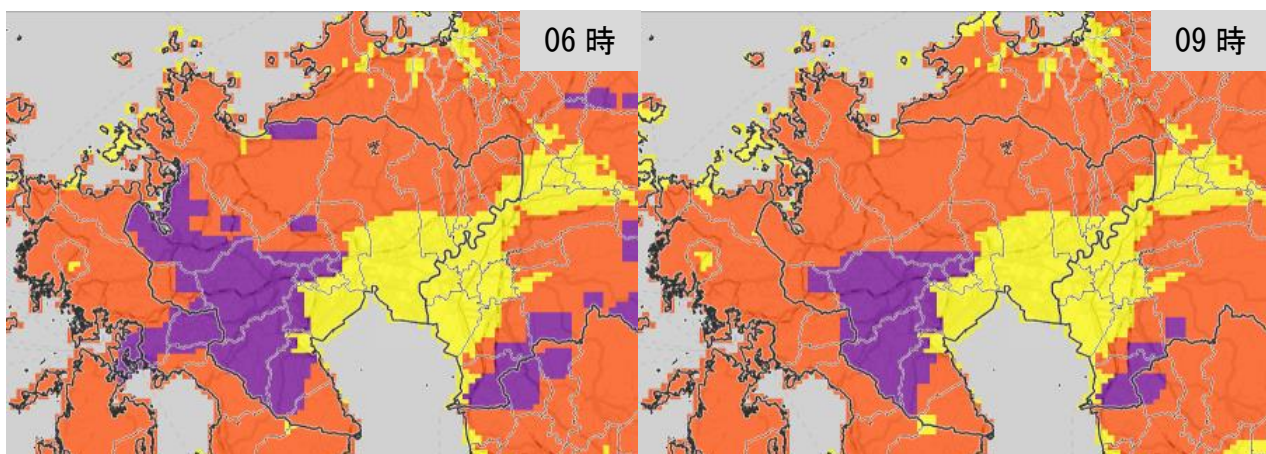
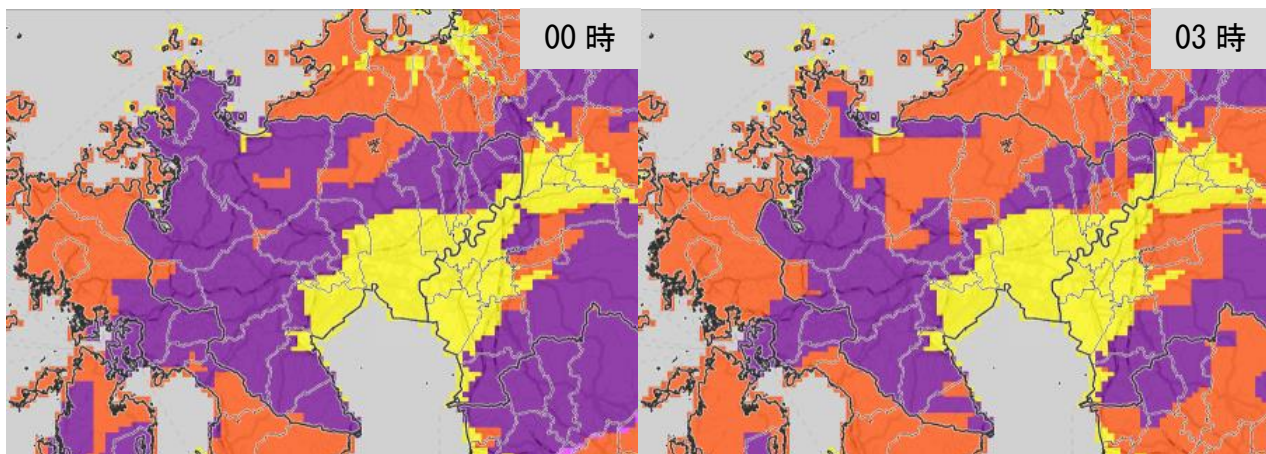
土砂キキクル（危険度分布） 8月13日00時～13日21時3時間毎



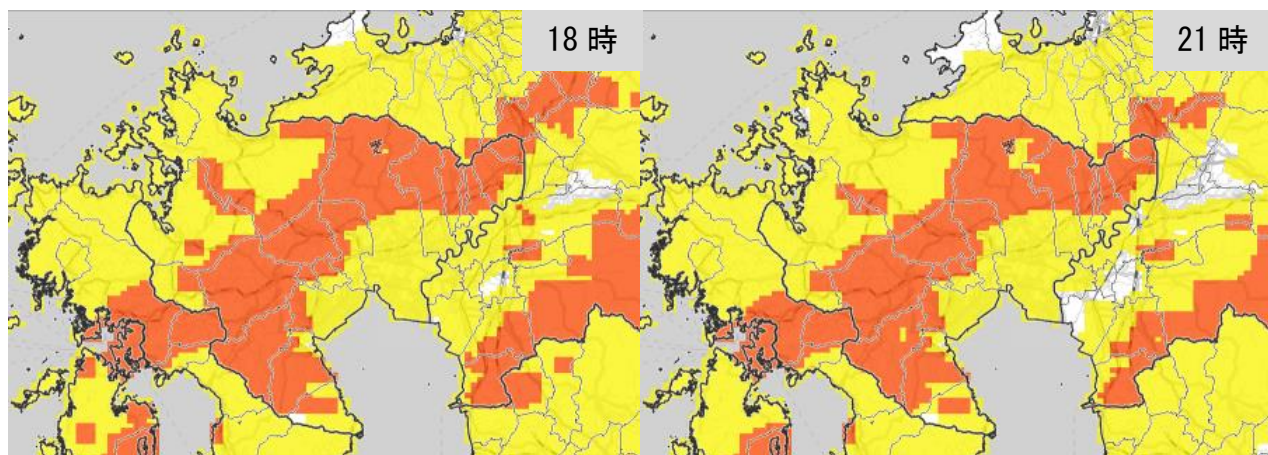
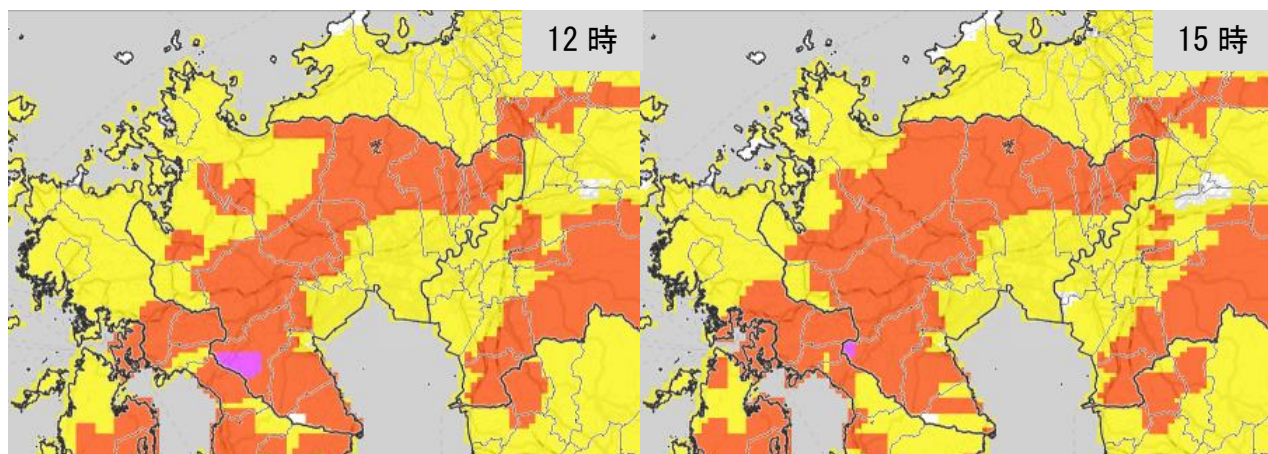
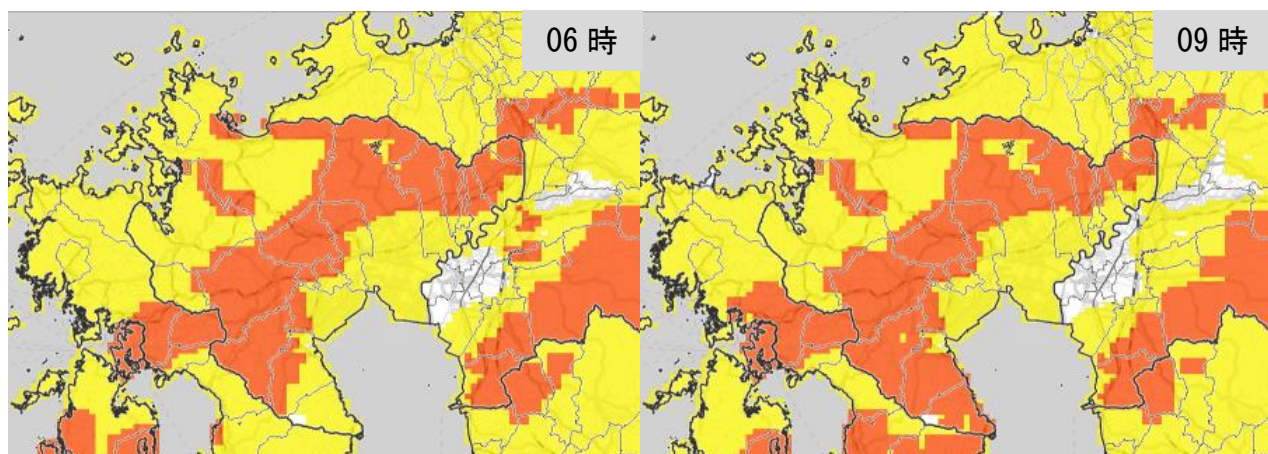
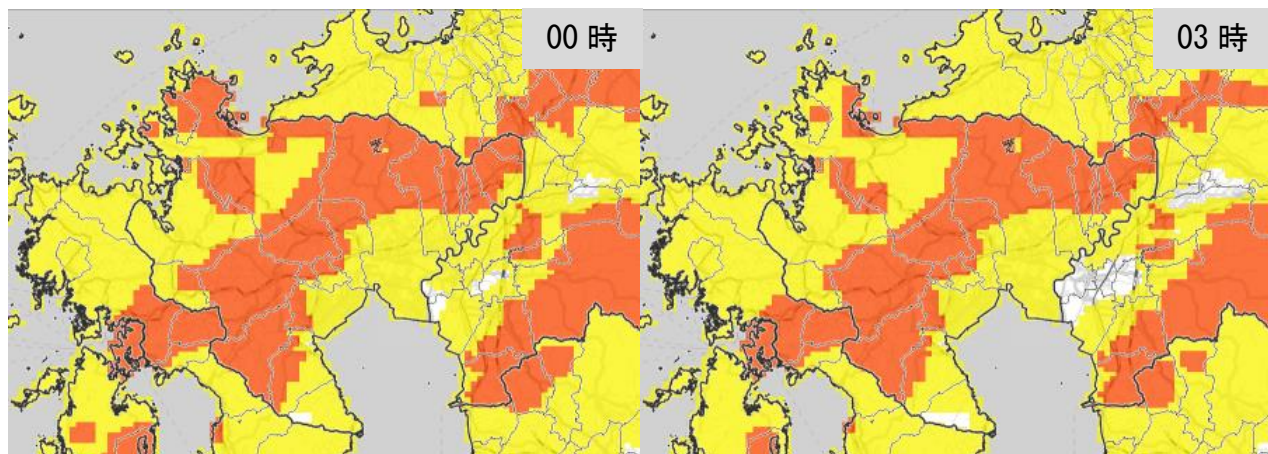
土砂キキクル（危険度分布） 8月14日00時～14日21時3時間毎



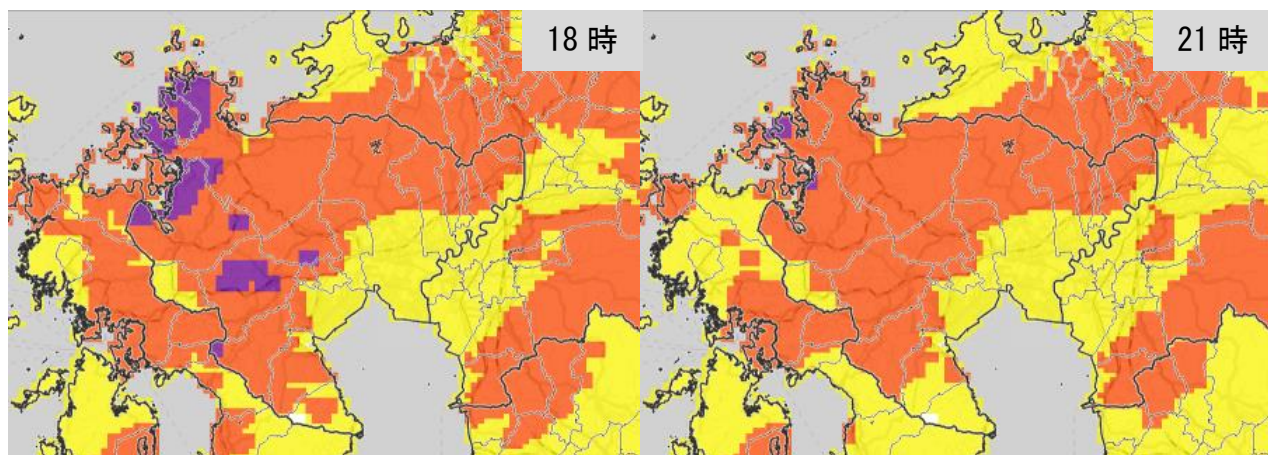
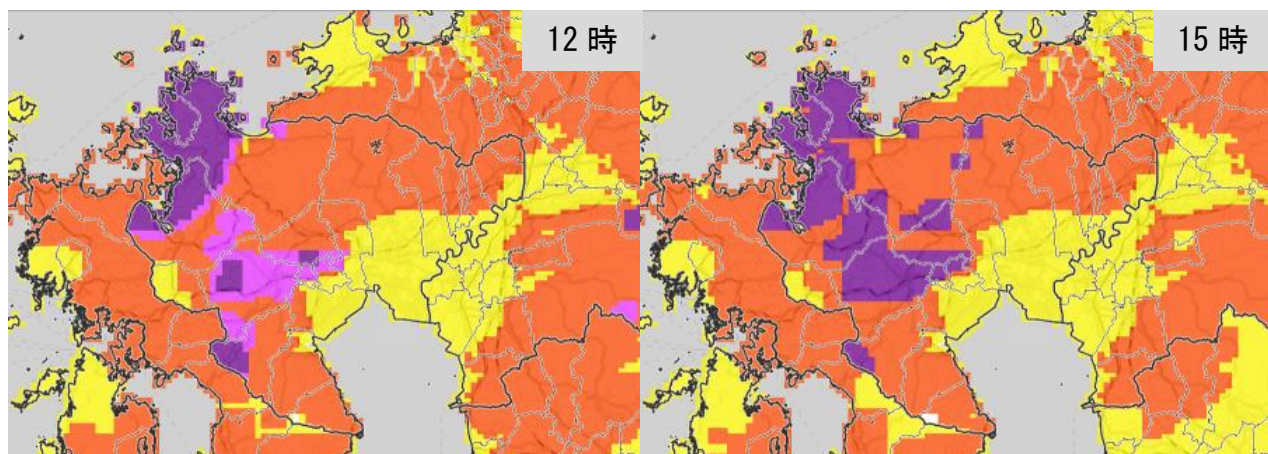
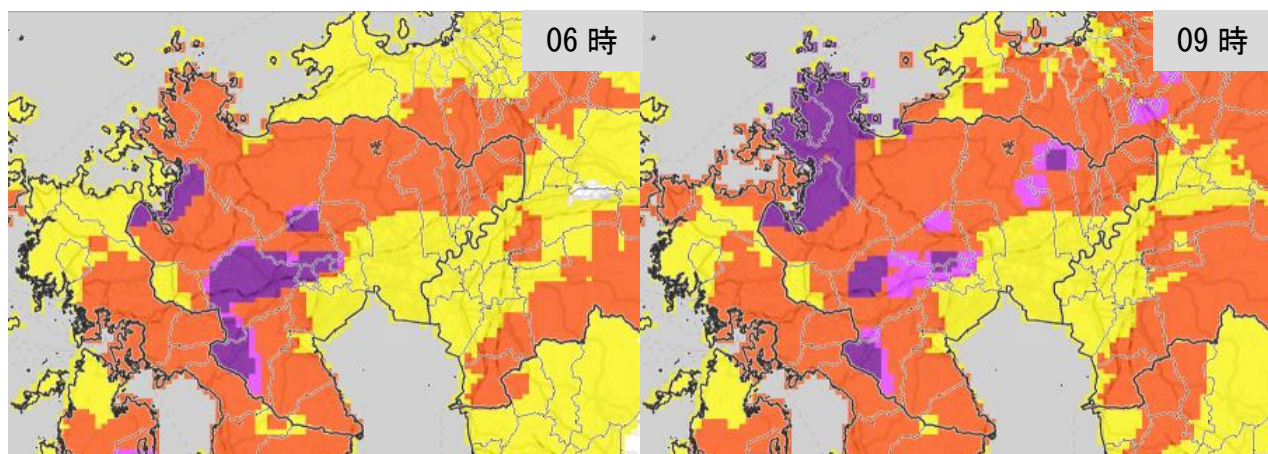
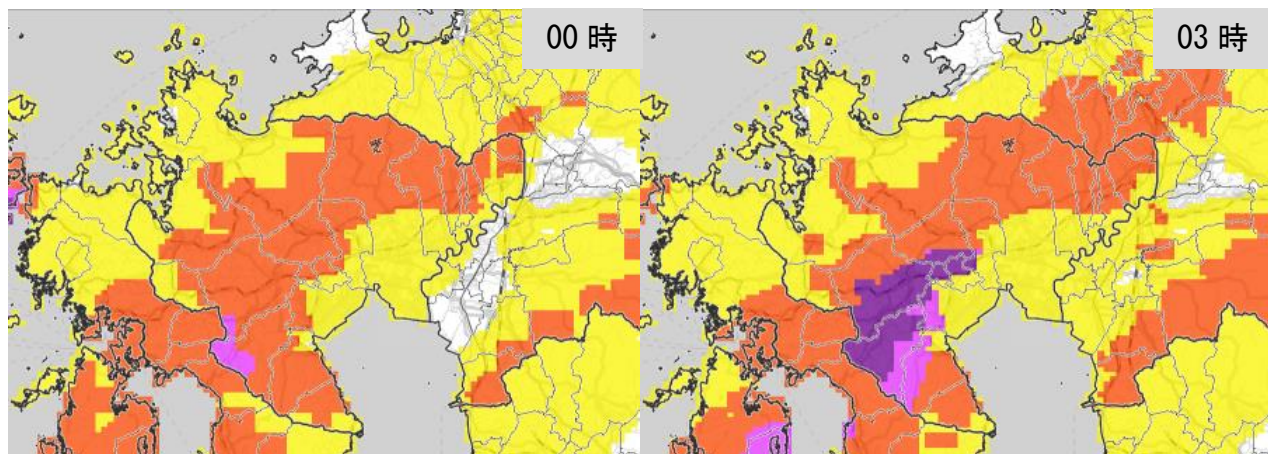
土砂キキクル（危険度分布） 8月15日00時～15日21時3時間毎



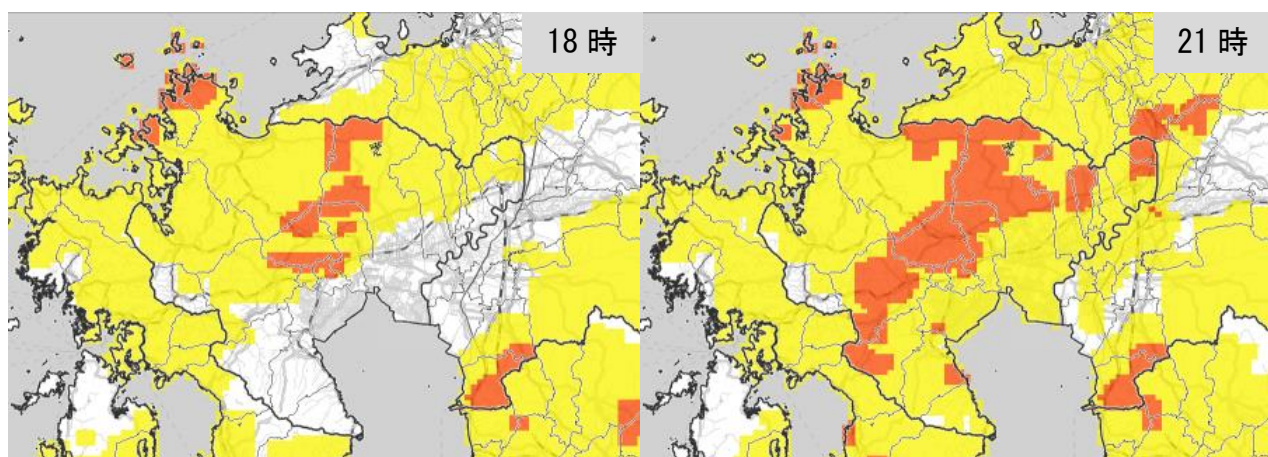
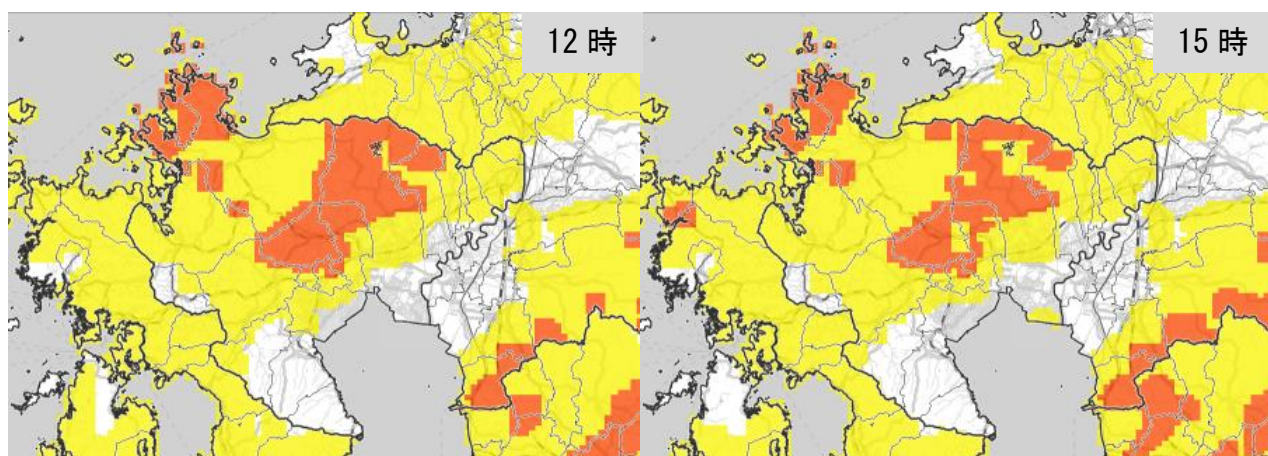
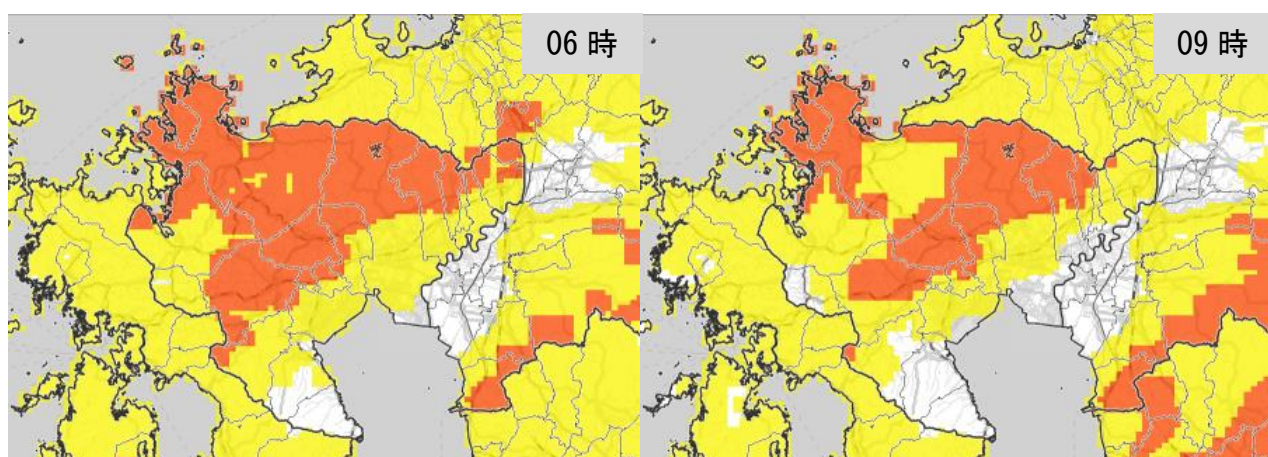
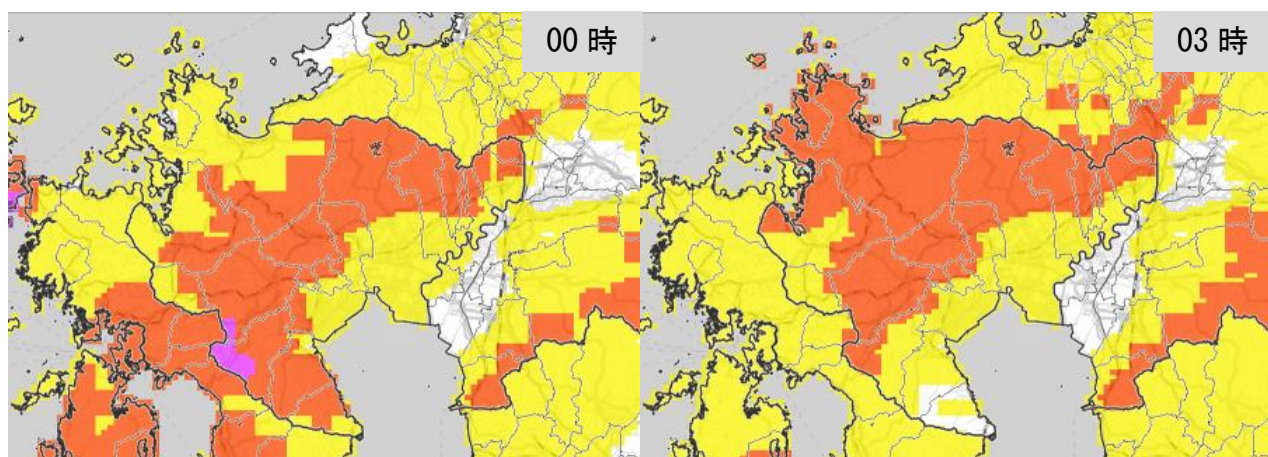
土砂キキクル（危険度分布） 8月16日00時～16日21時3時間毎



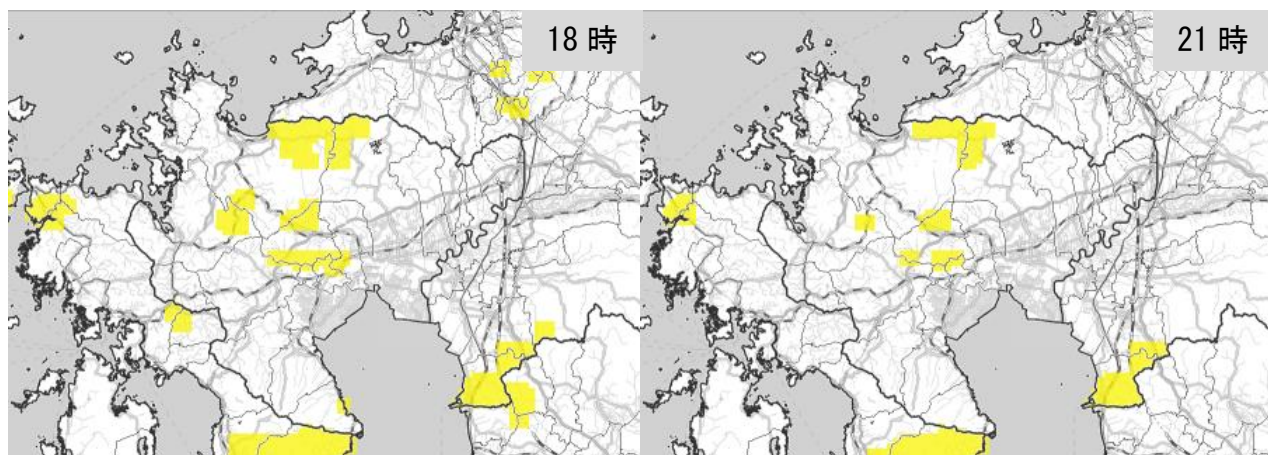
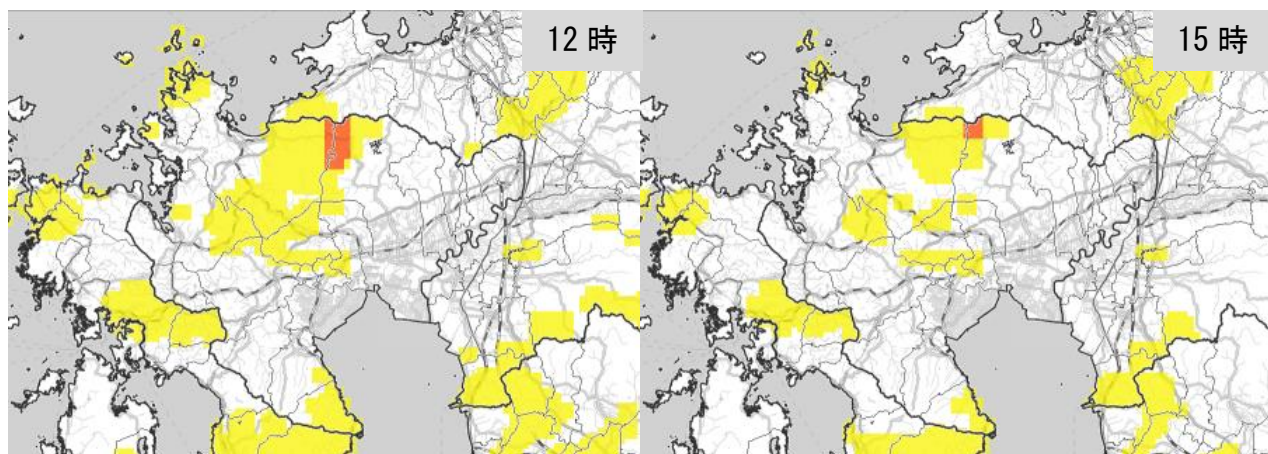
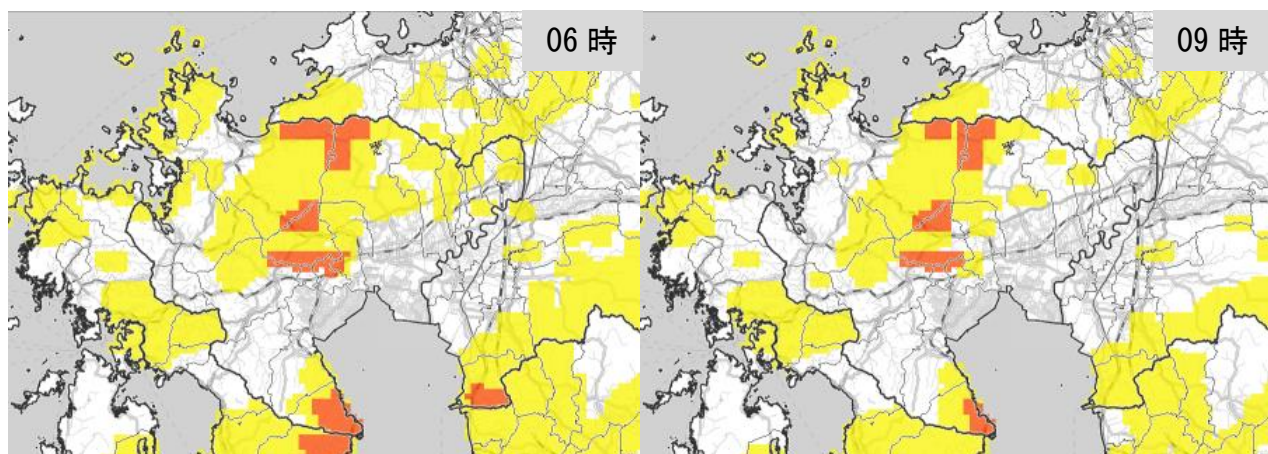
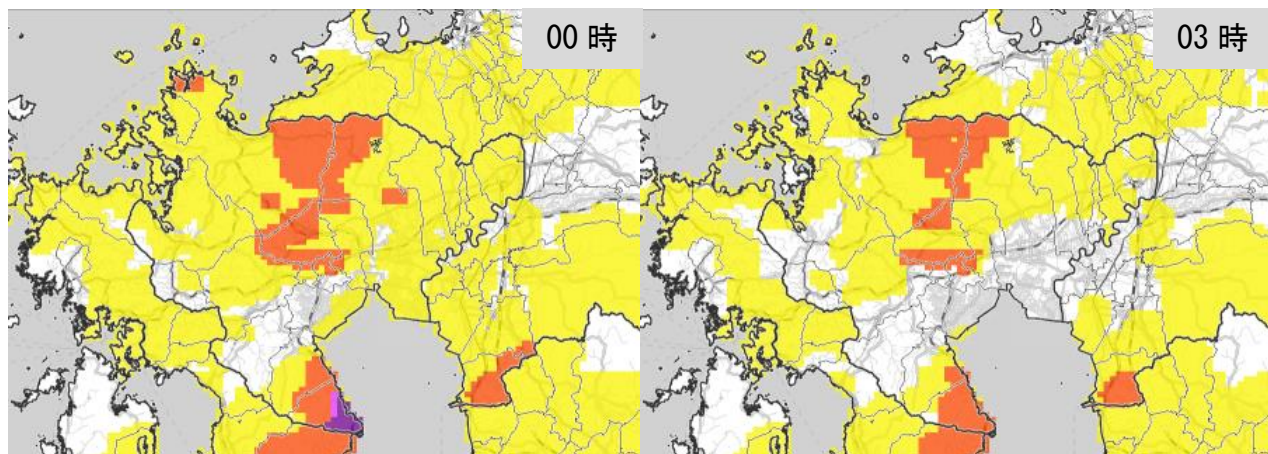
土砂キキクル（危険度分布） 8月17日00時～17日21時3時間毎



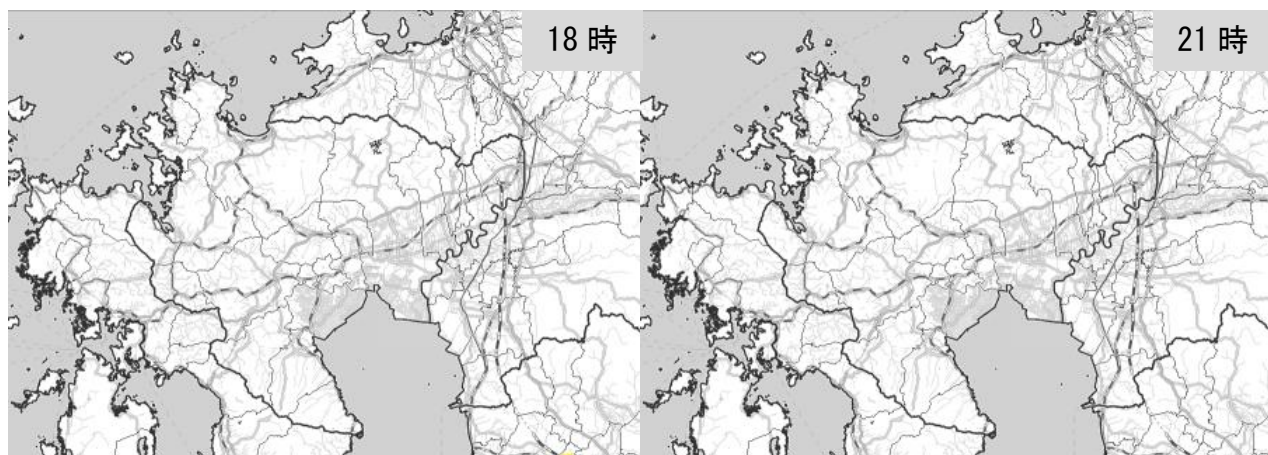
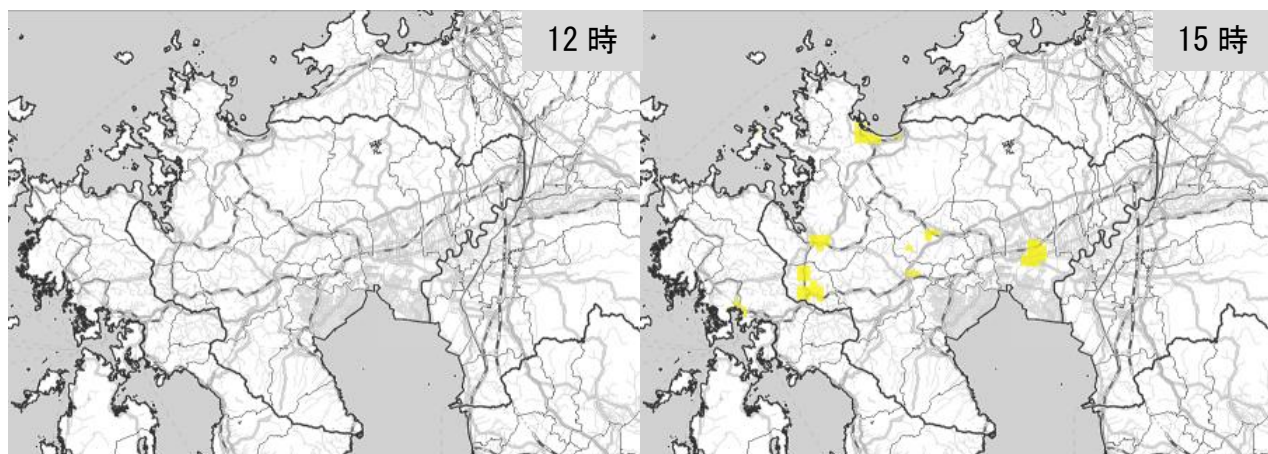
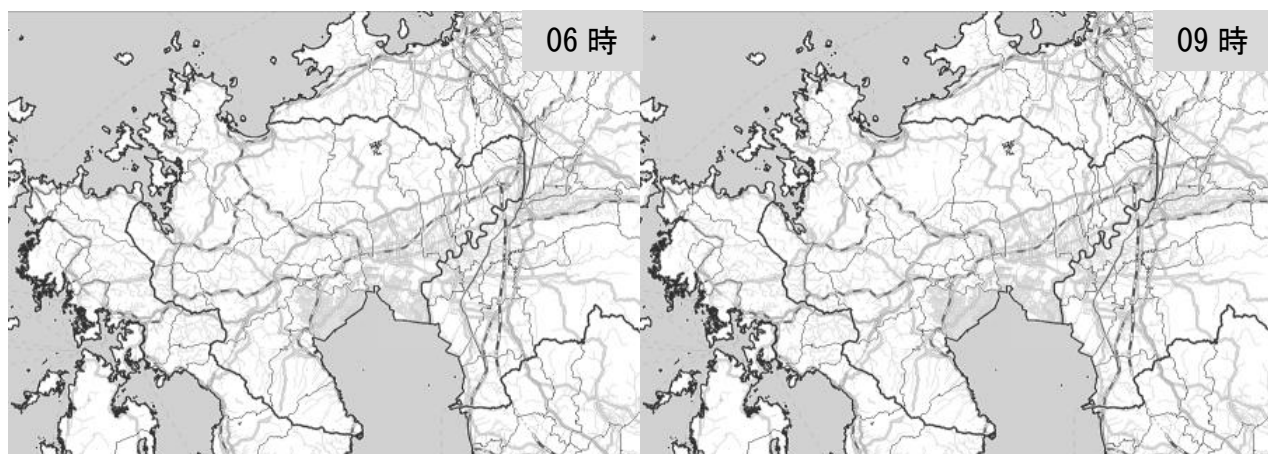
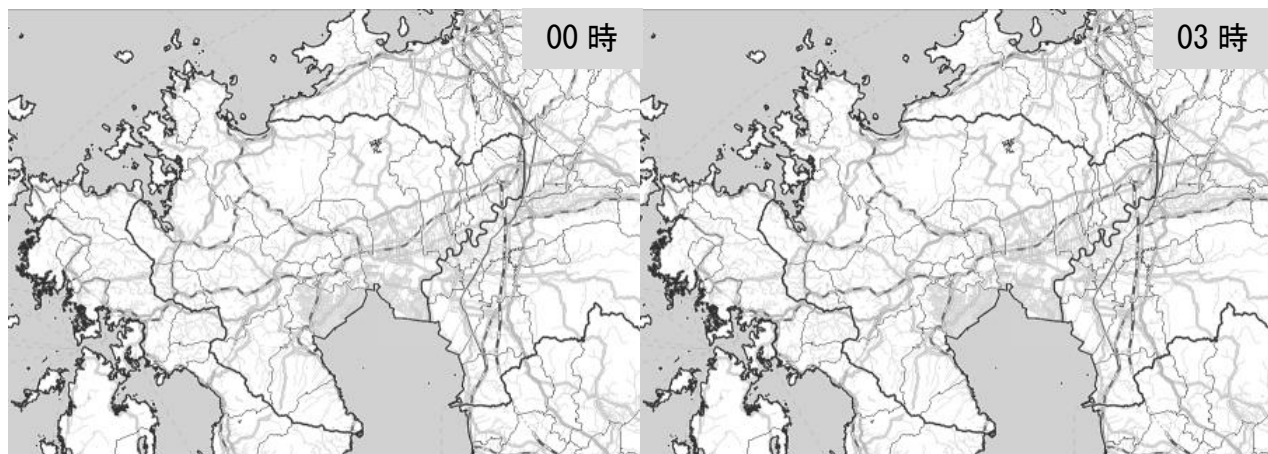
土砂キキクル（危険度分布） 8月18日00時～18日21時3時間毎



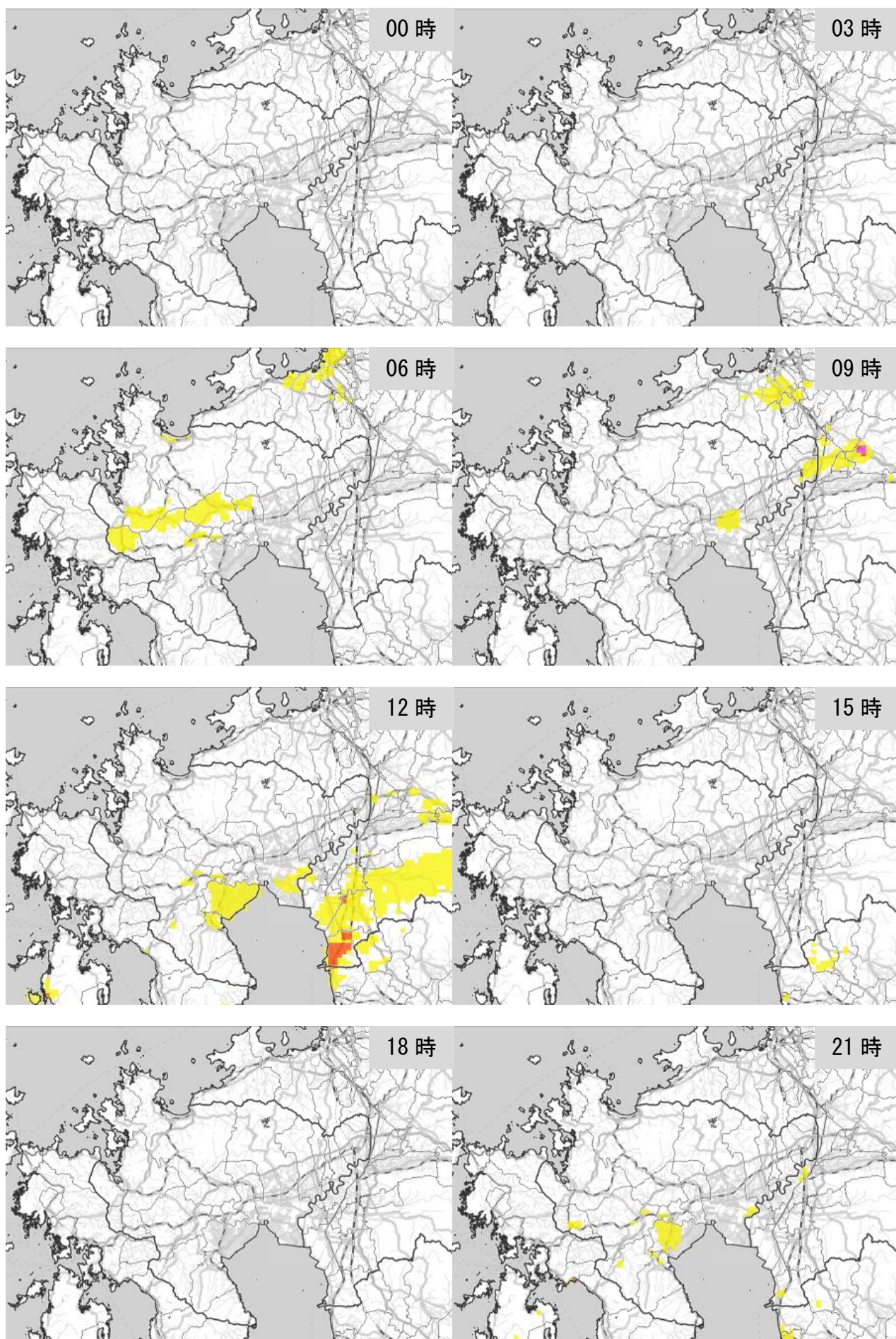
土砂キキクル（危険度分布） 8月19日00時～19日21時3時間毎



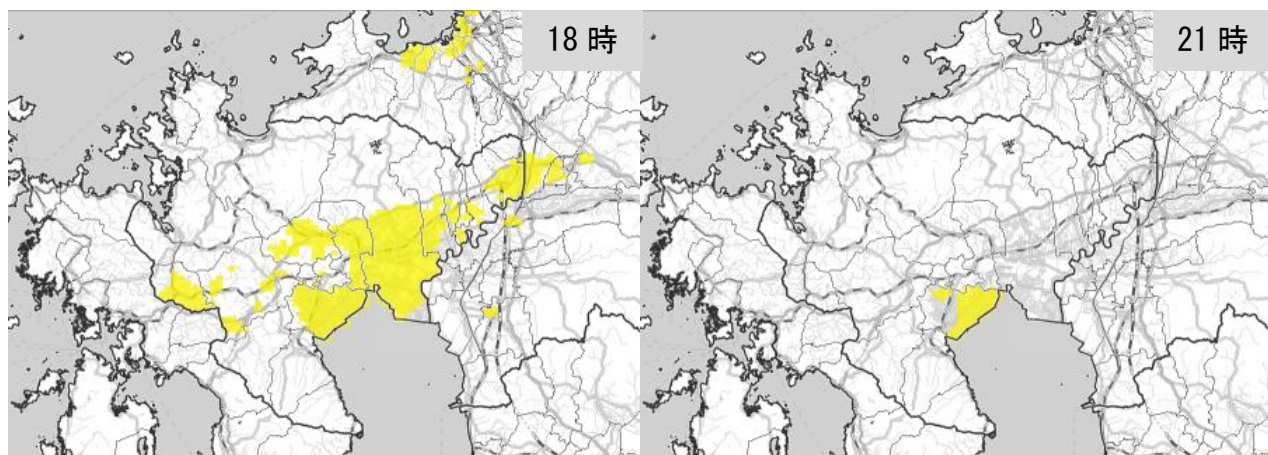
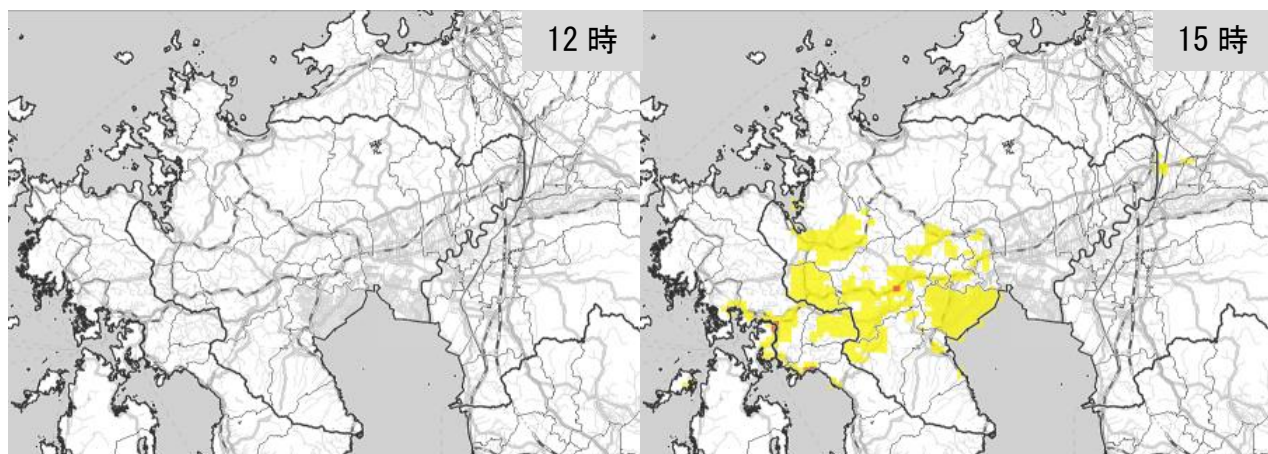
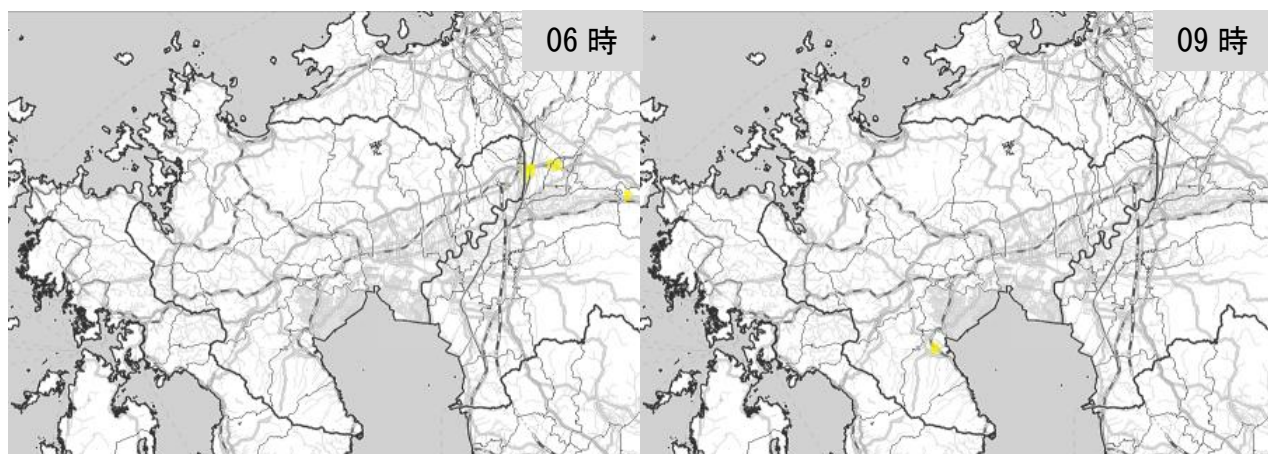
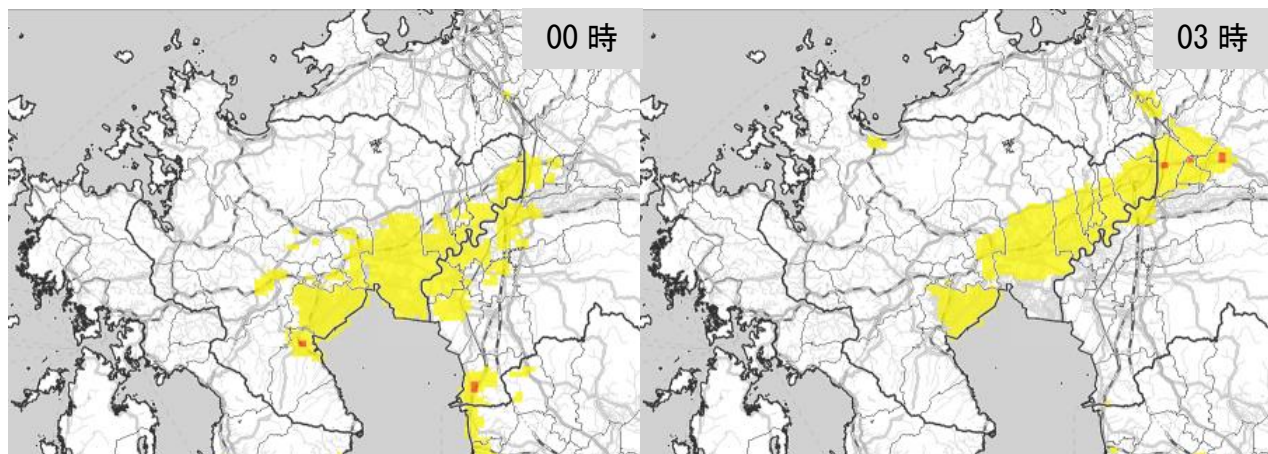
浸水キキクル（危険度分布） 8月11日00時～11日21時3時間毎



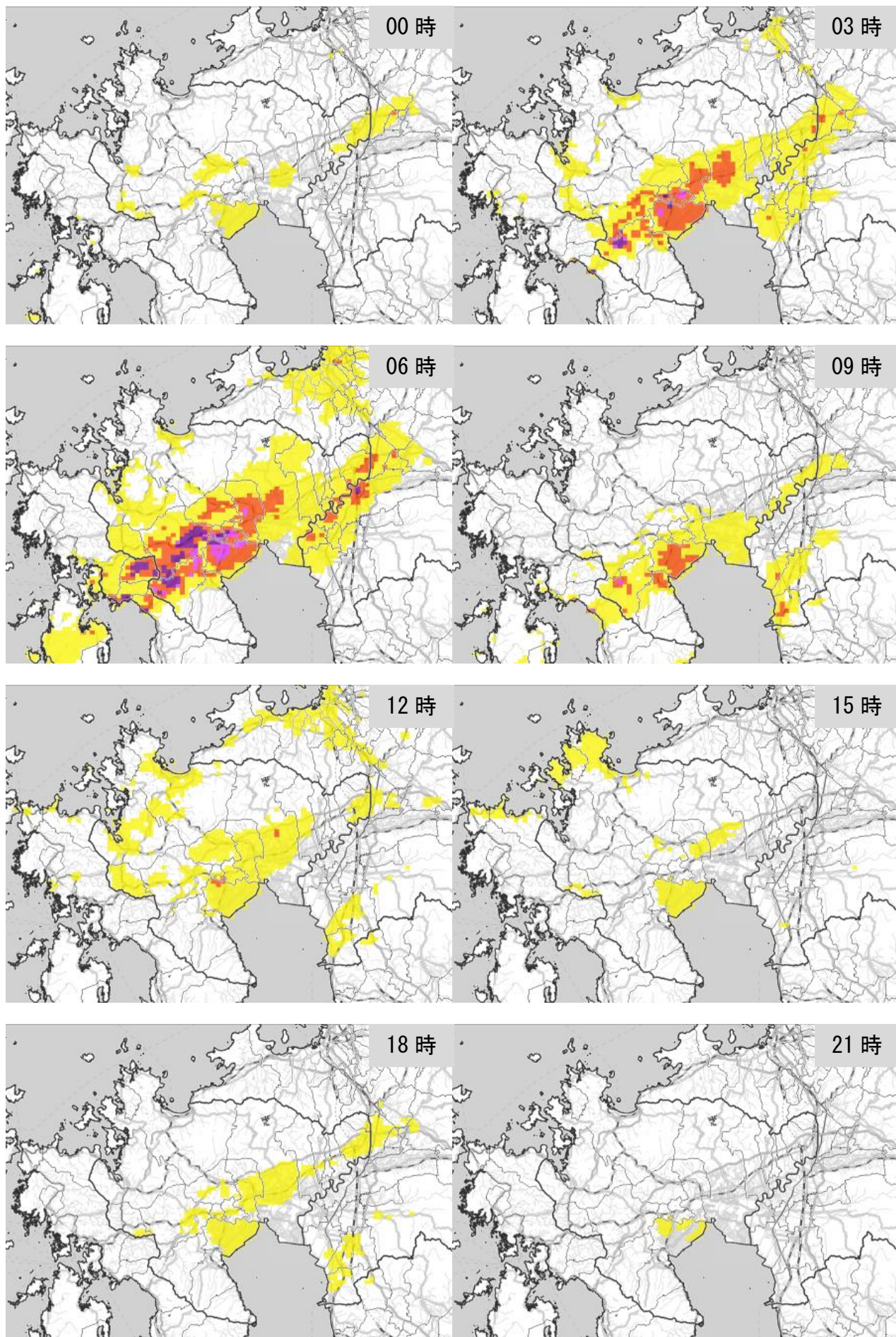
浸水キキクル（危険度分布） 8月12日00時～12日21時3時間毎



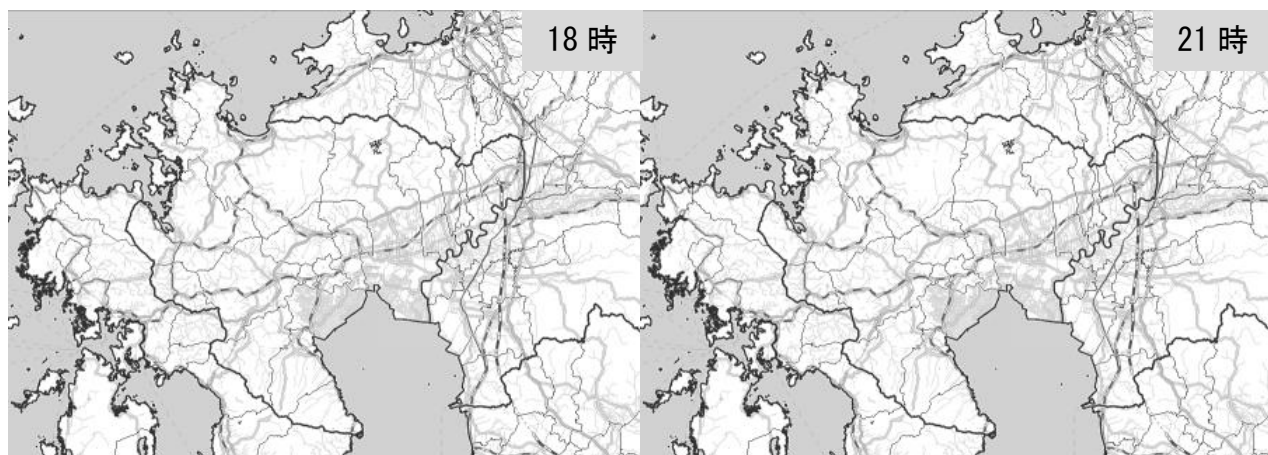
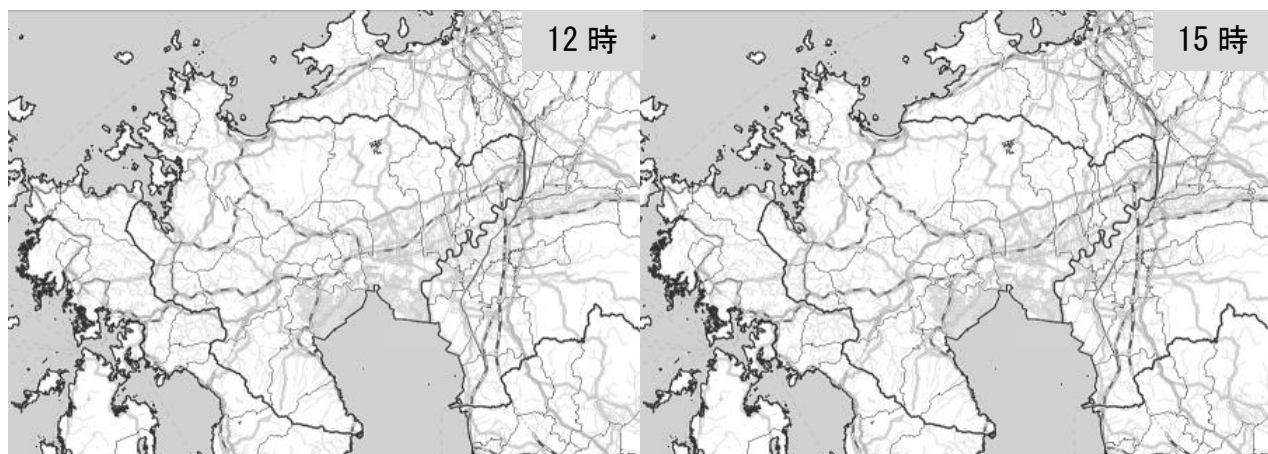
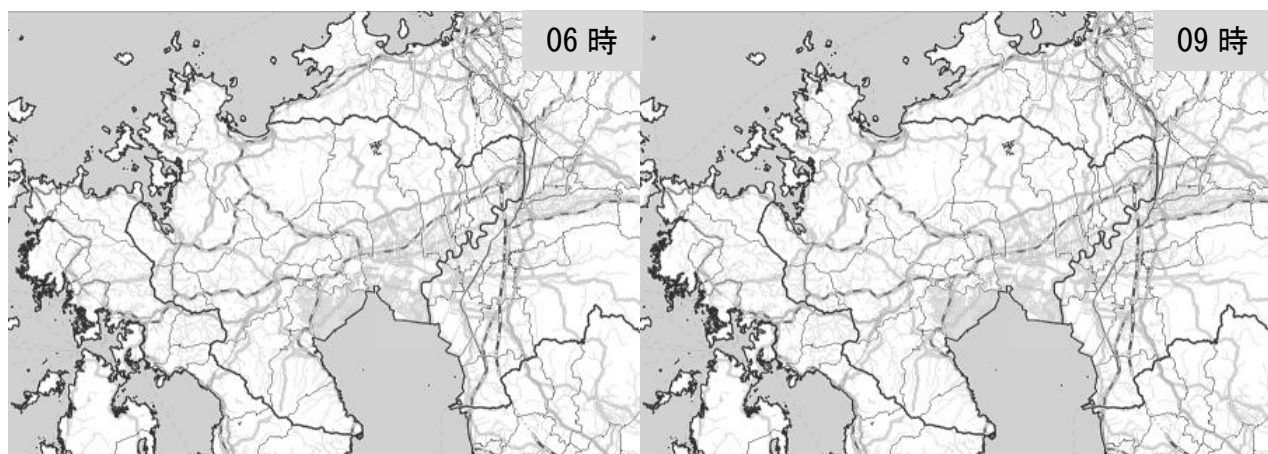
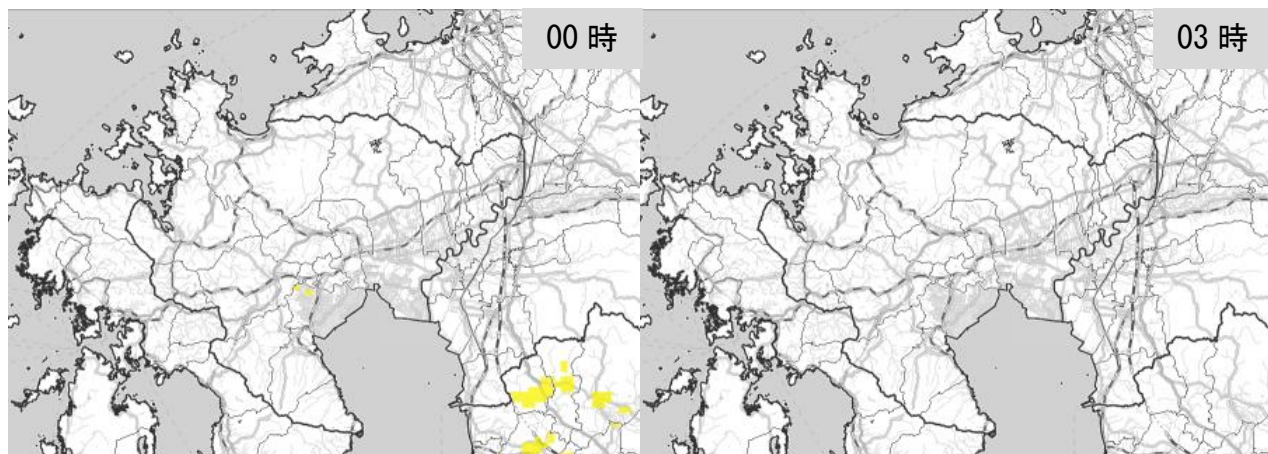
浸水キキクル（危険度分布） 8月13日00時～13日21時3時間毎



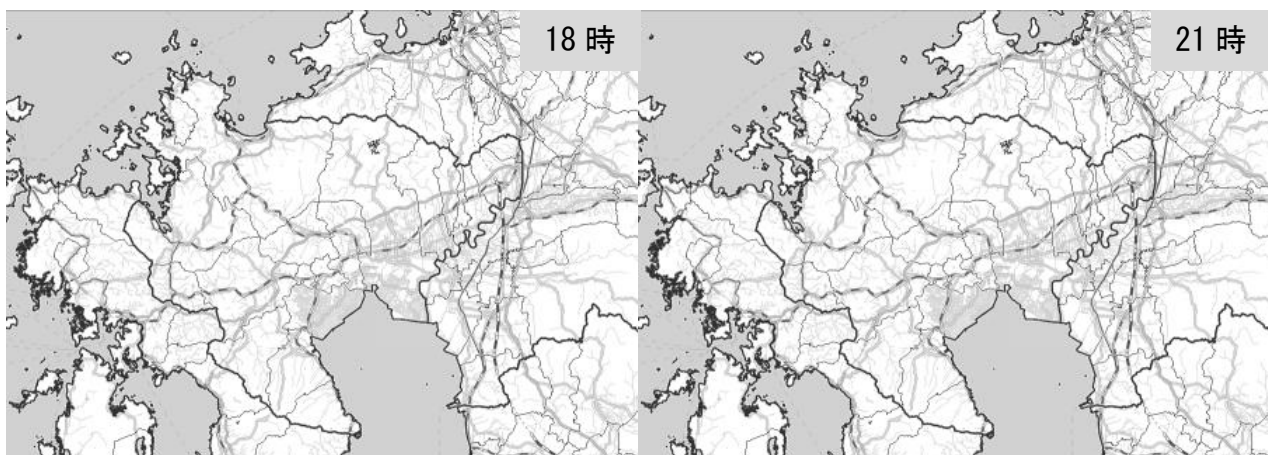
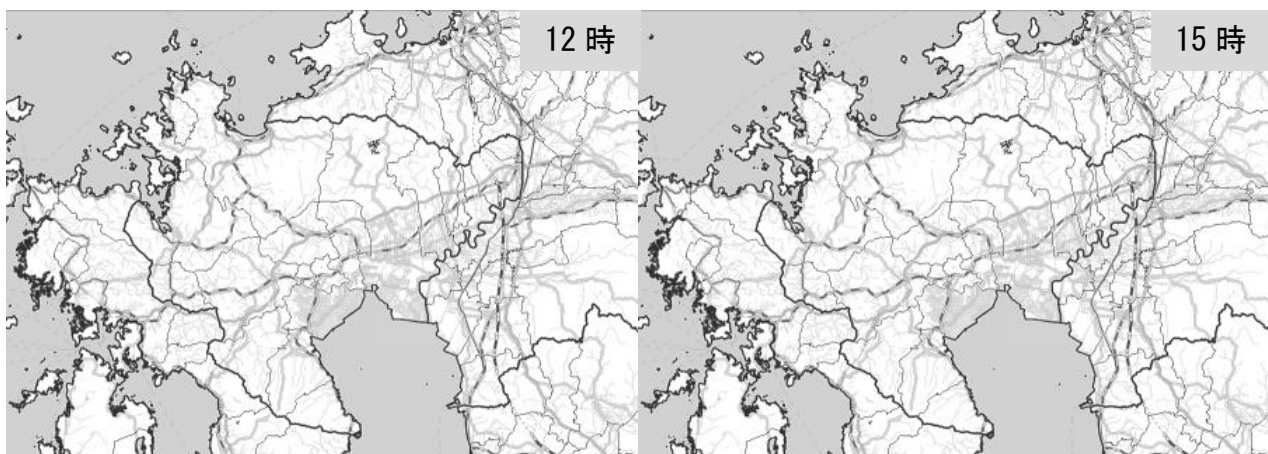
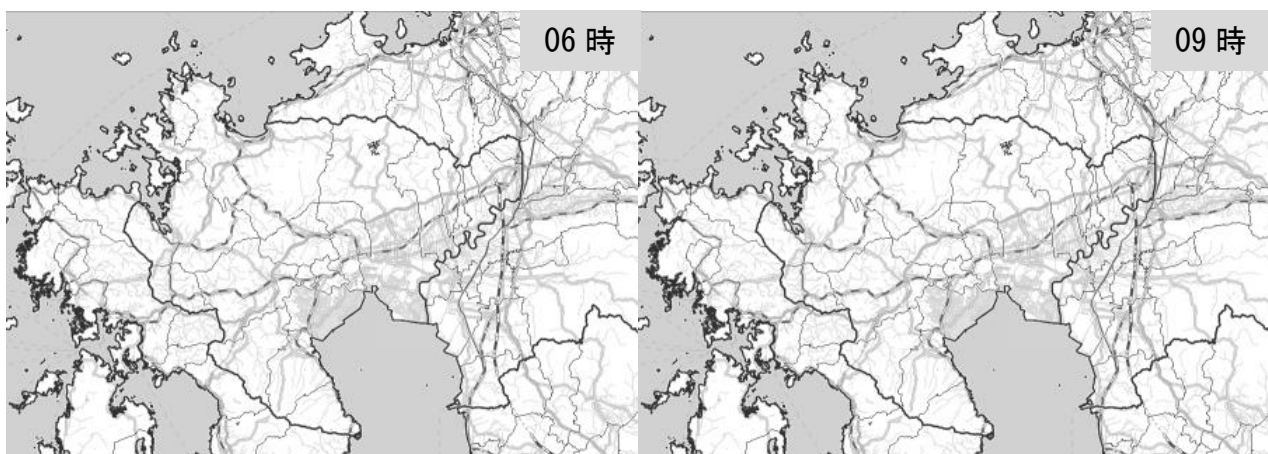
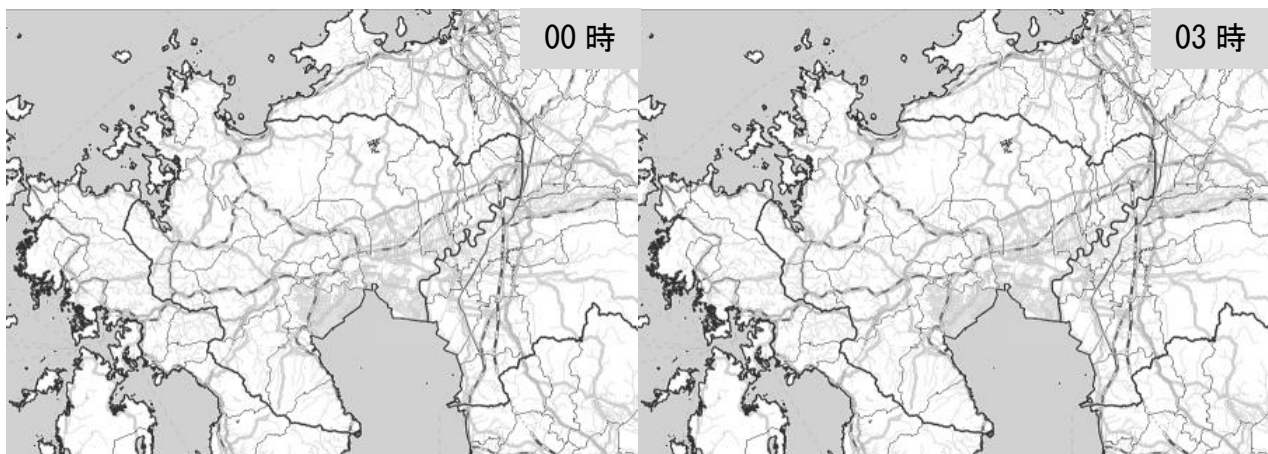
浸水キキクル（危険度分布） 8月14日00時～14日21時3時間毎



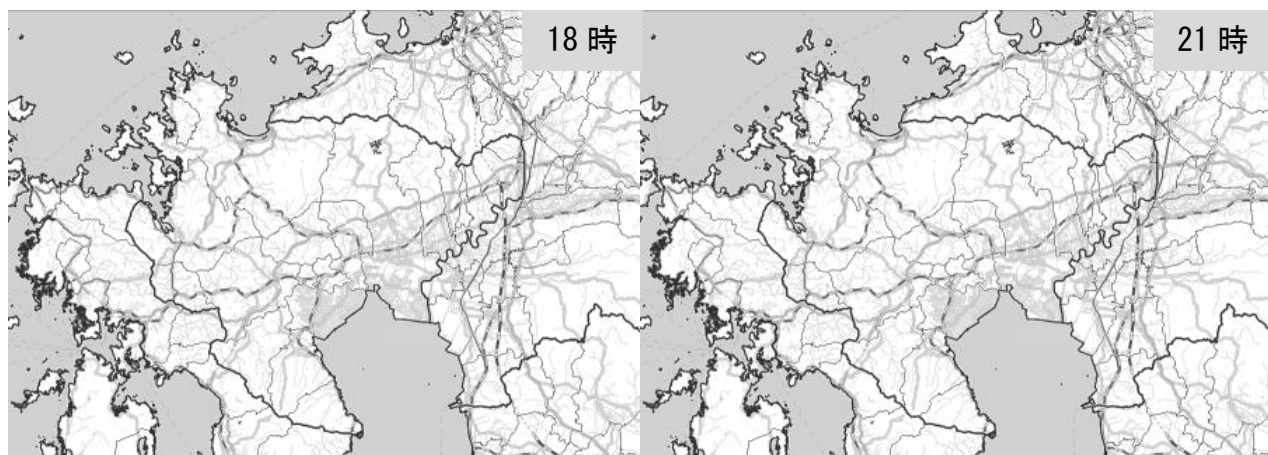
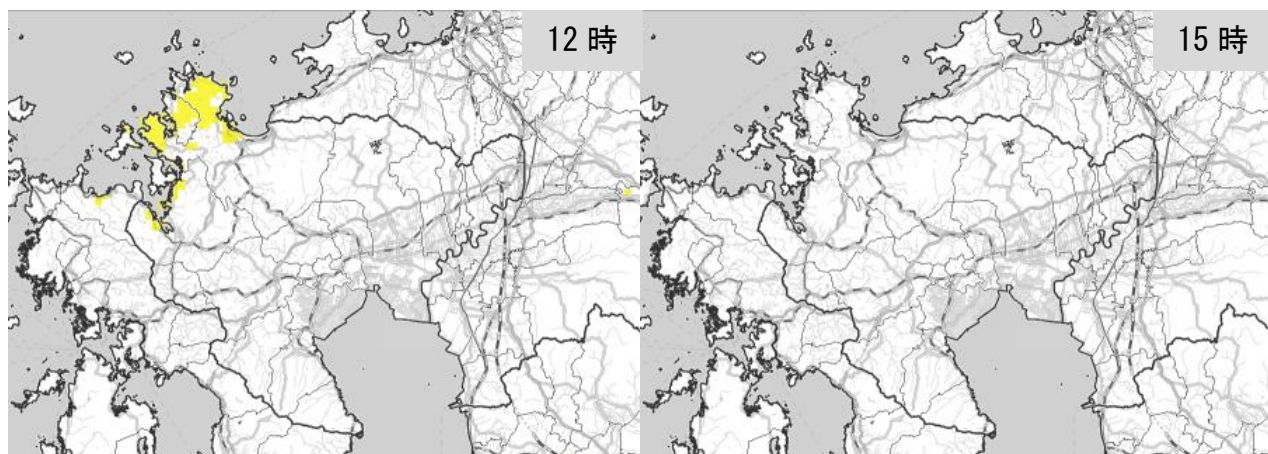
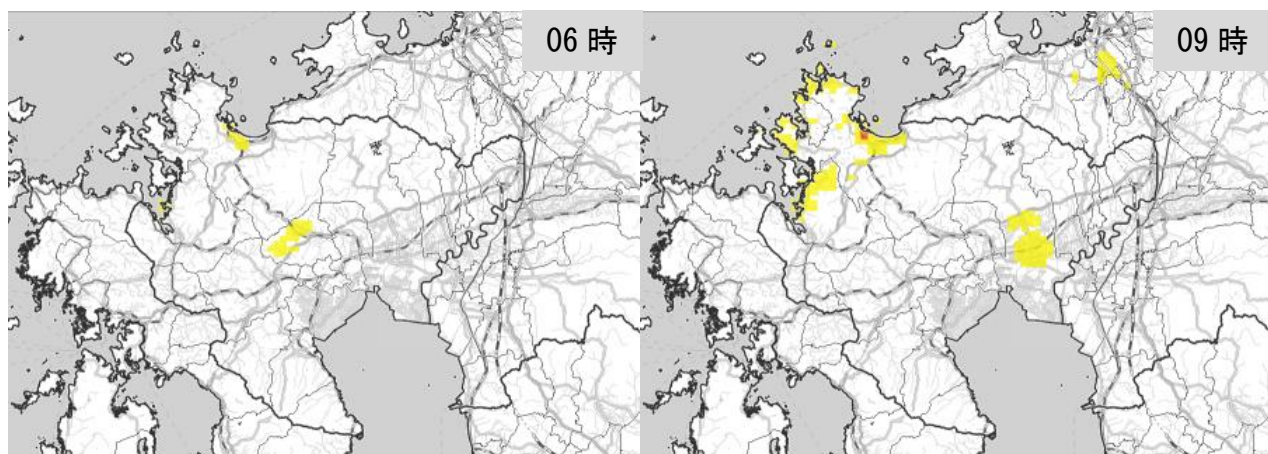
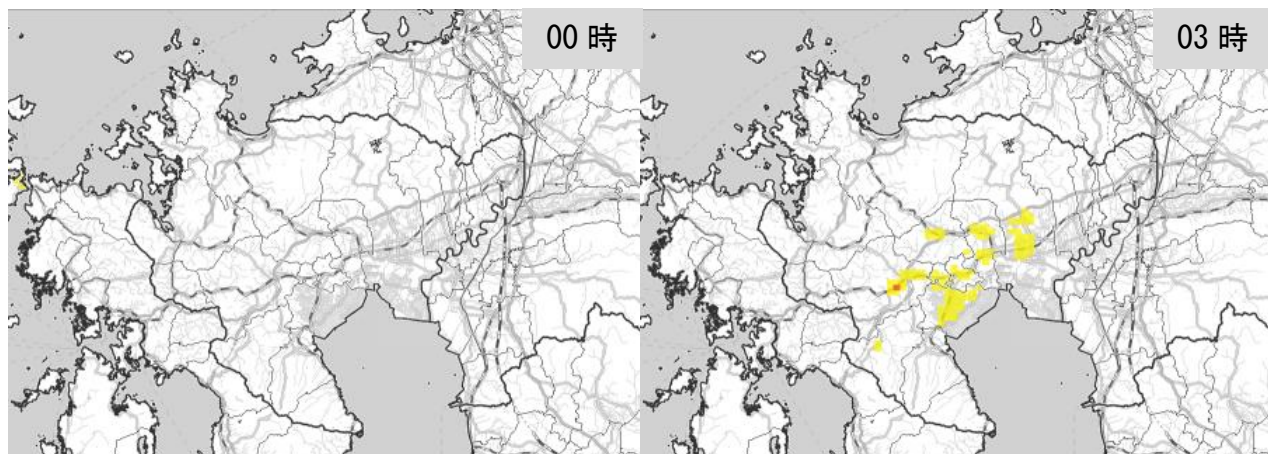
浸水キキクル（危険度分布） 8月15日00時～15日21時3時間毎



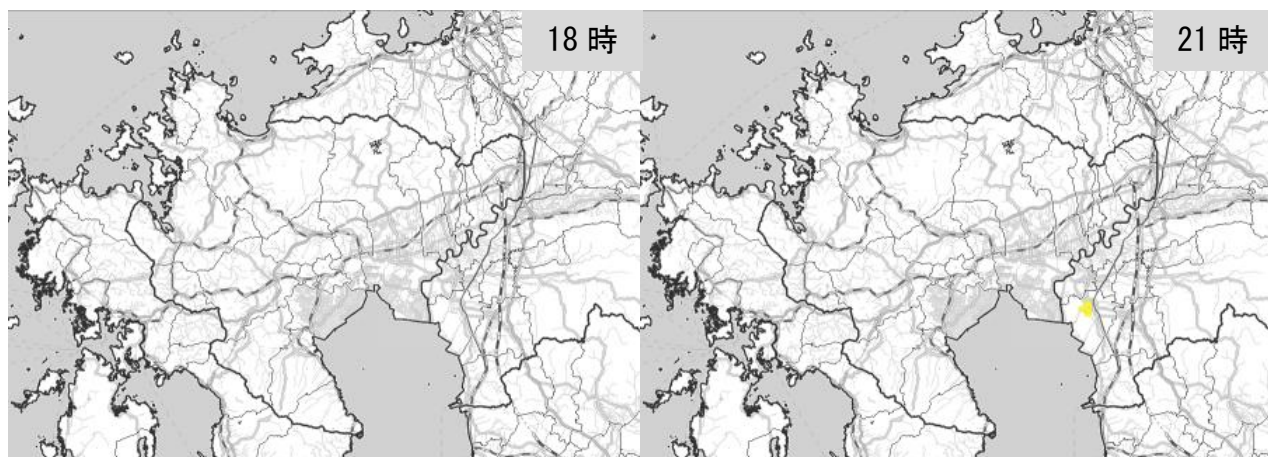
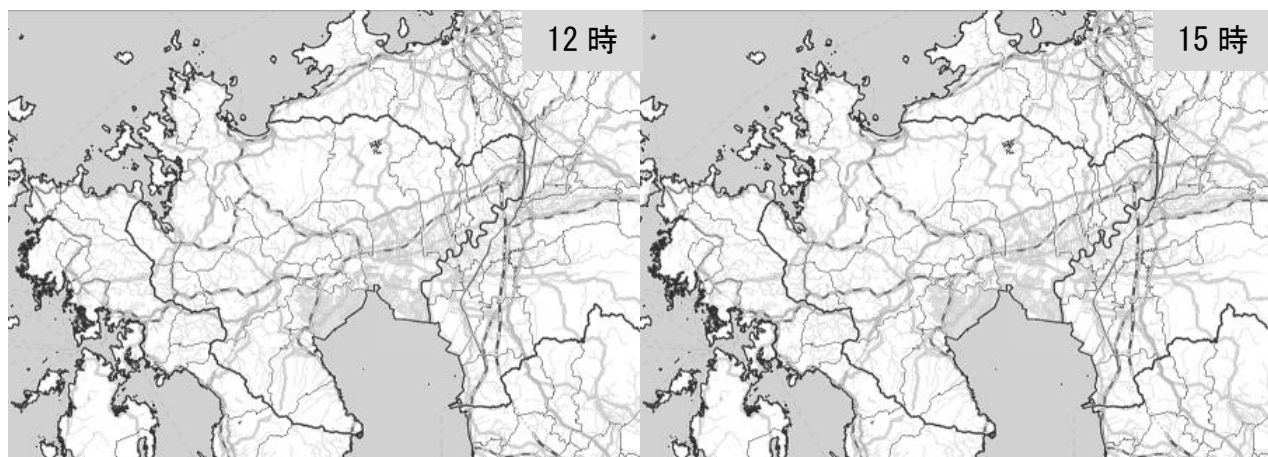
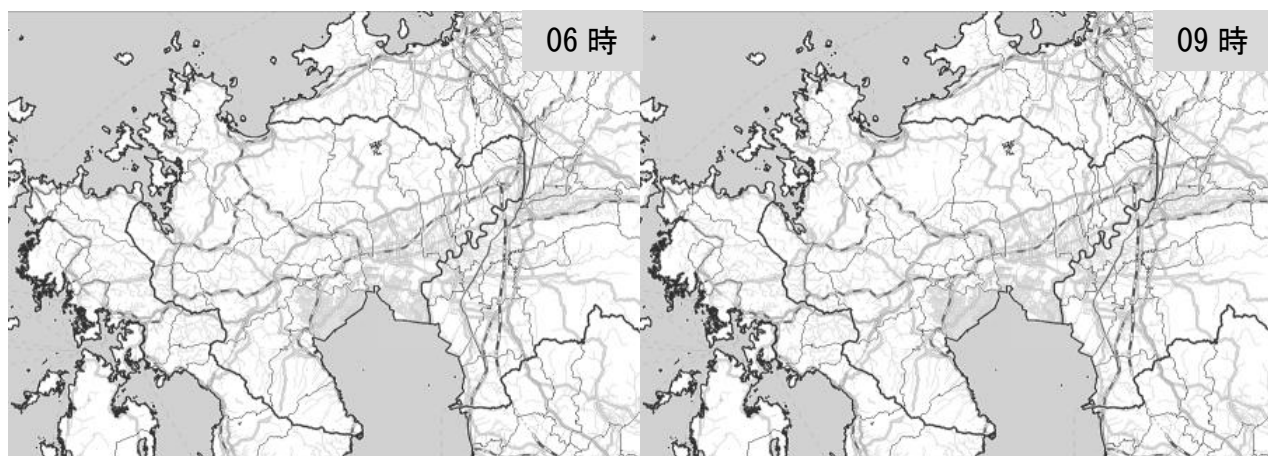
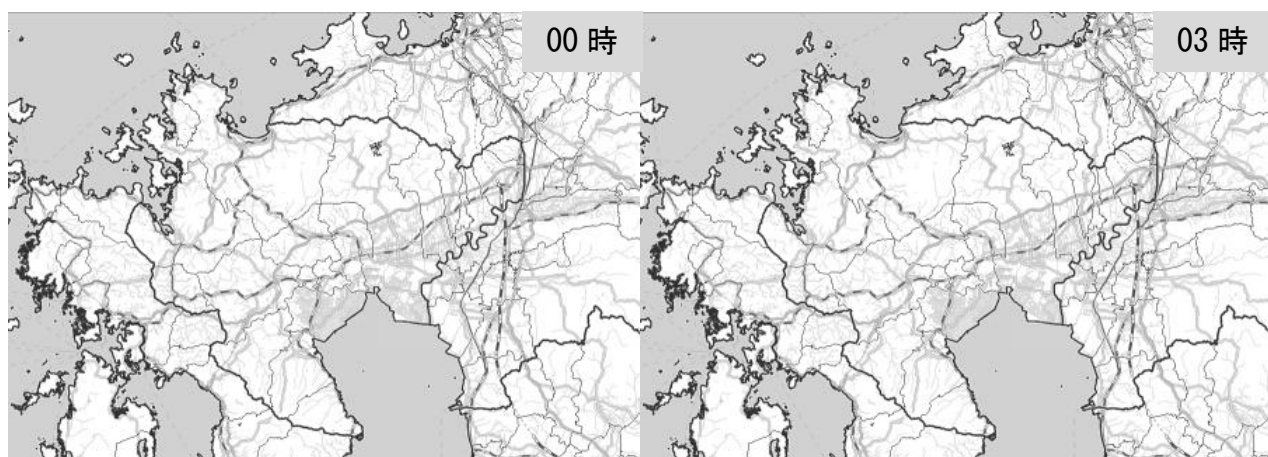
浸水キキクル（危険度分布） 8月16日00時～16日21時3時間毎



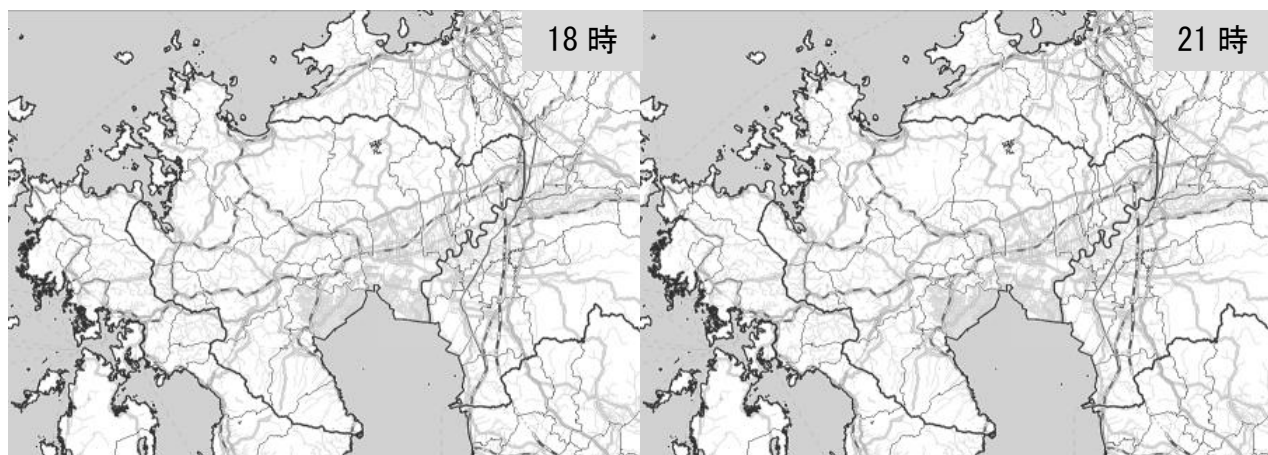
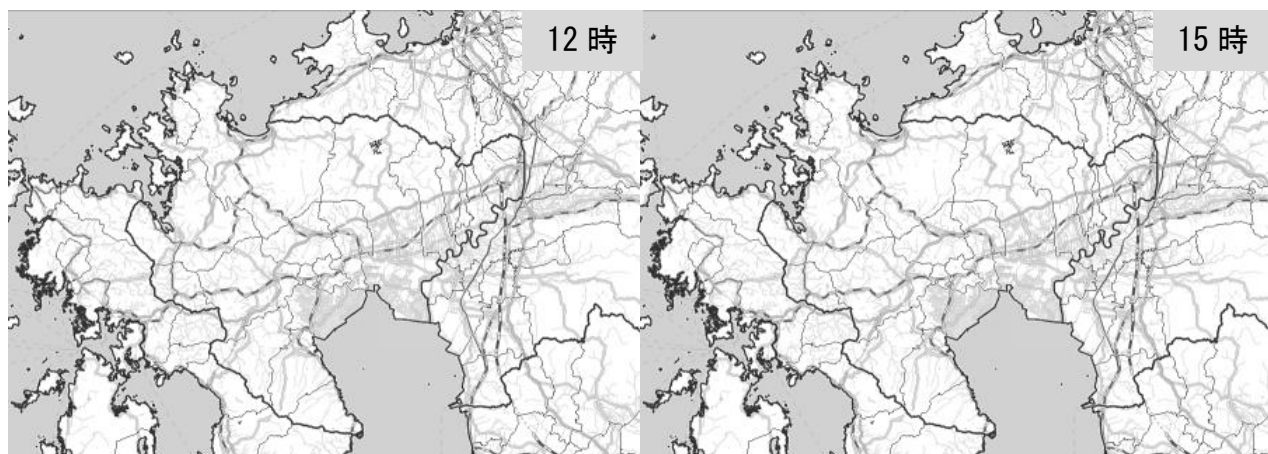
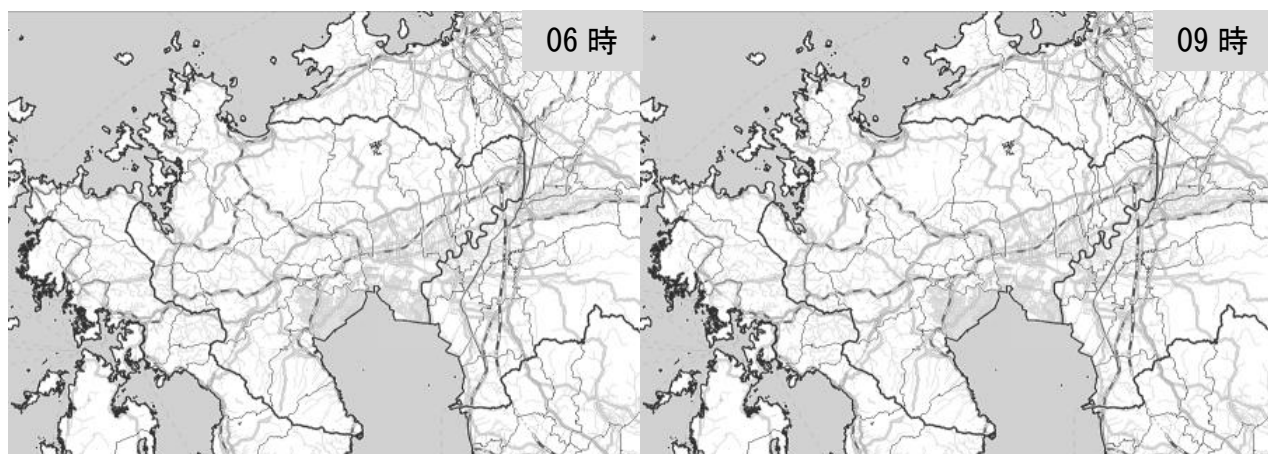
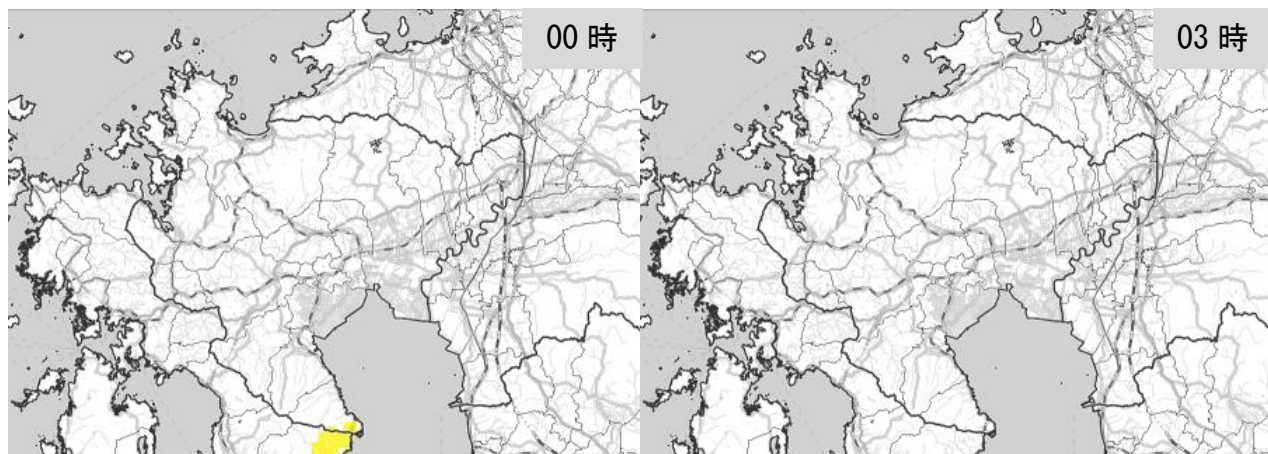
浸水キキクル（危険度分布） 8月17日00時～17日21時3時間毎



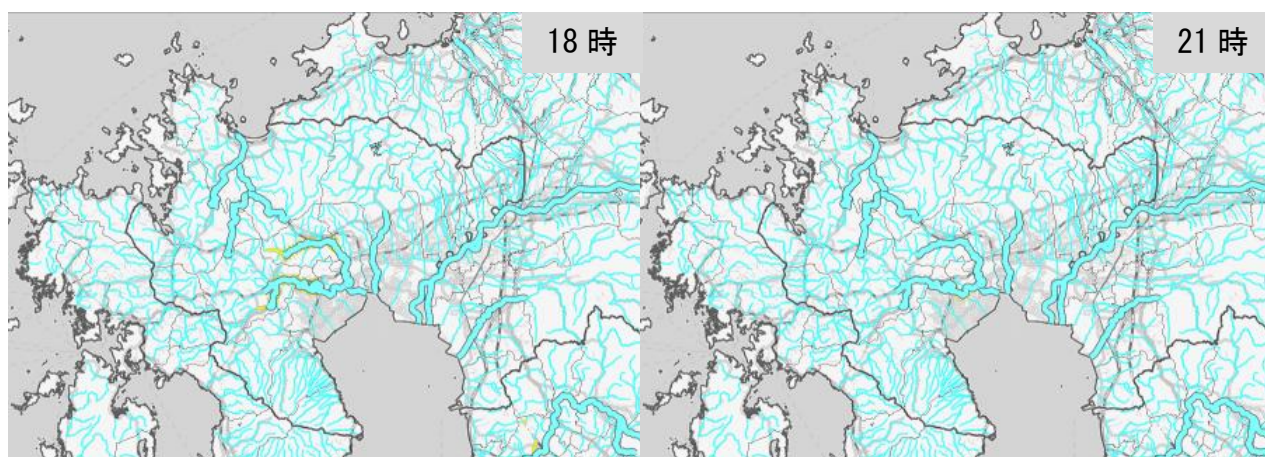
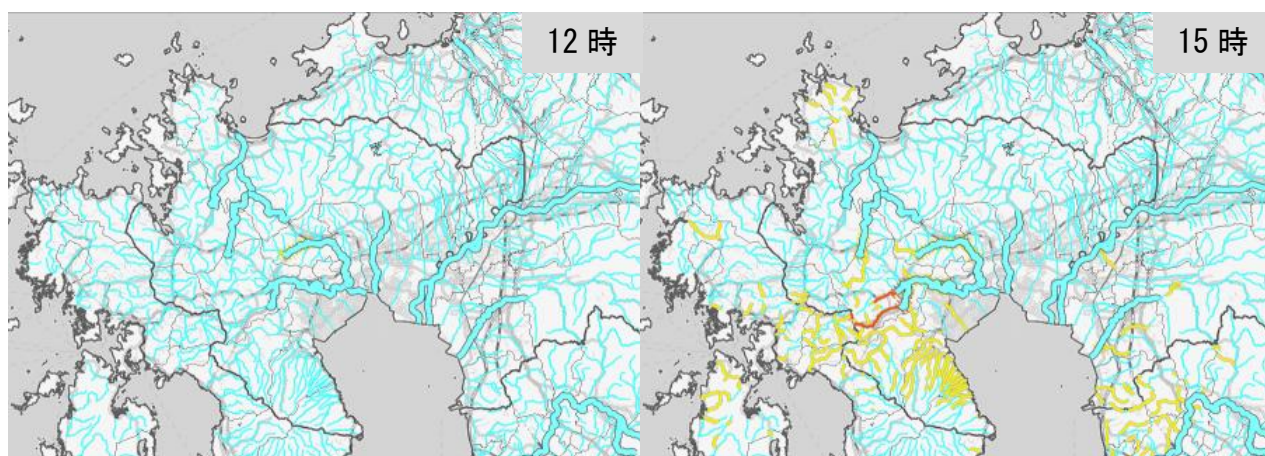
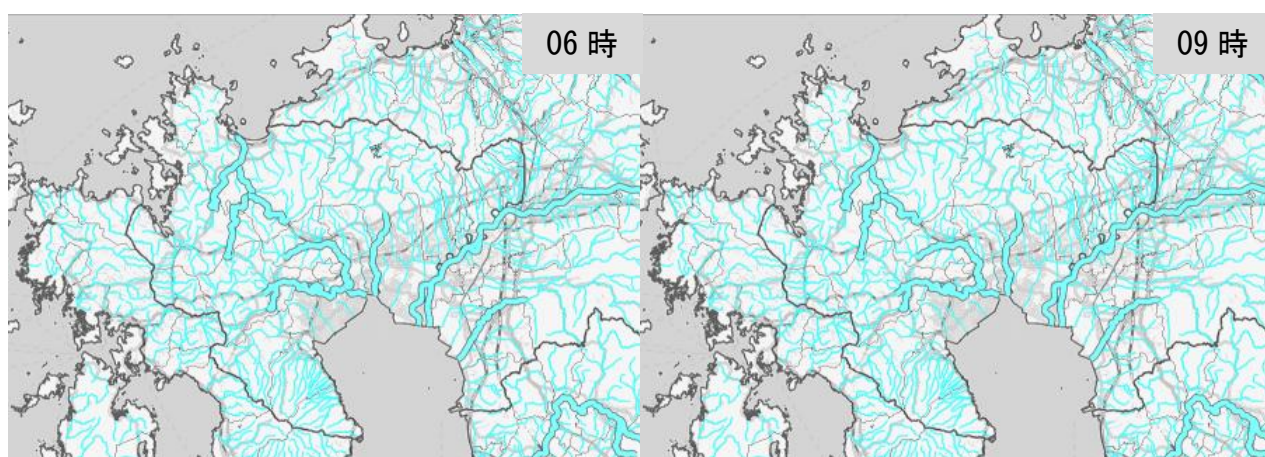
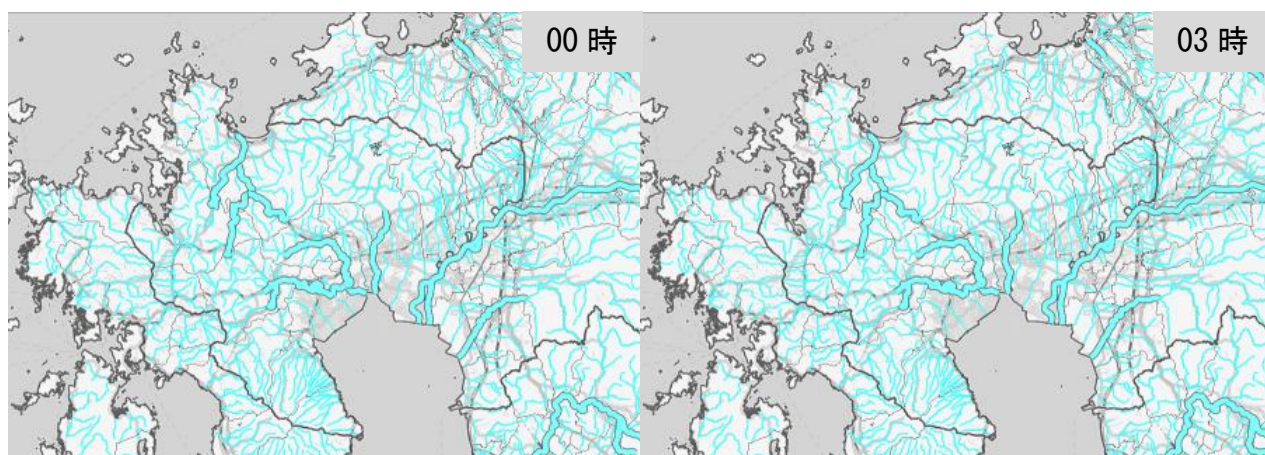
浸水キキクル（危険度分布） 8月18日00時～18日21時3時間毎



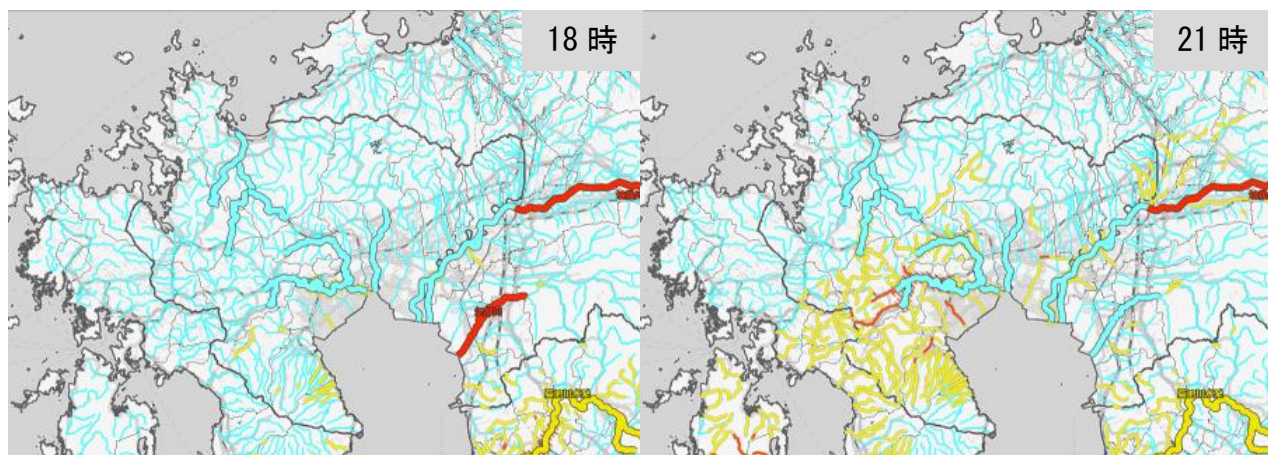
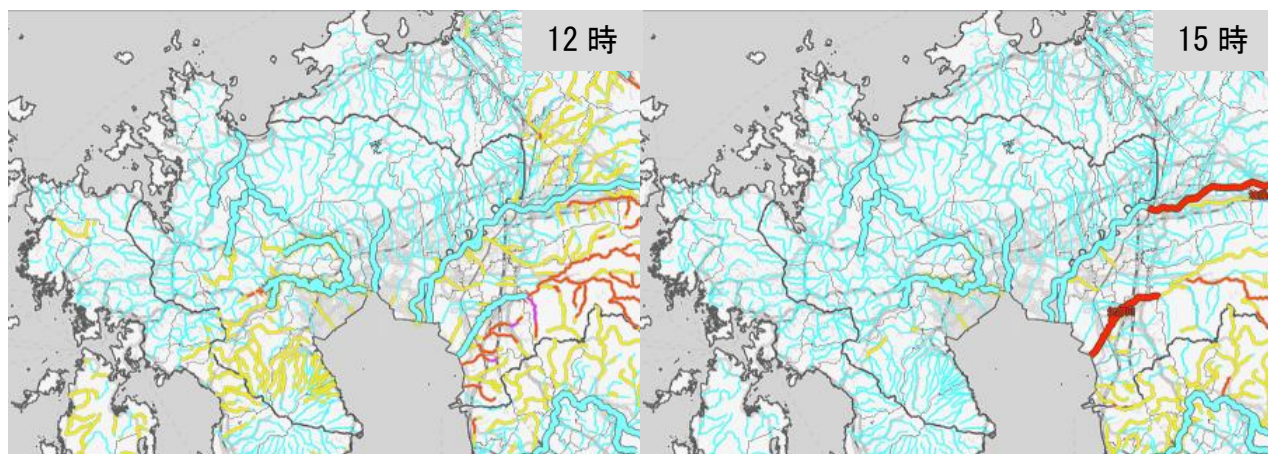
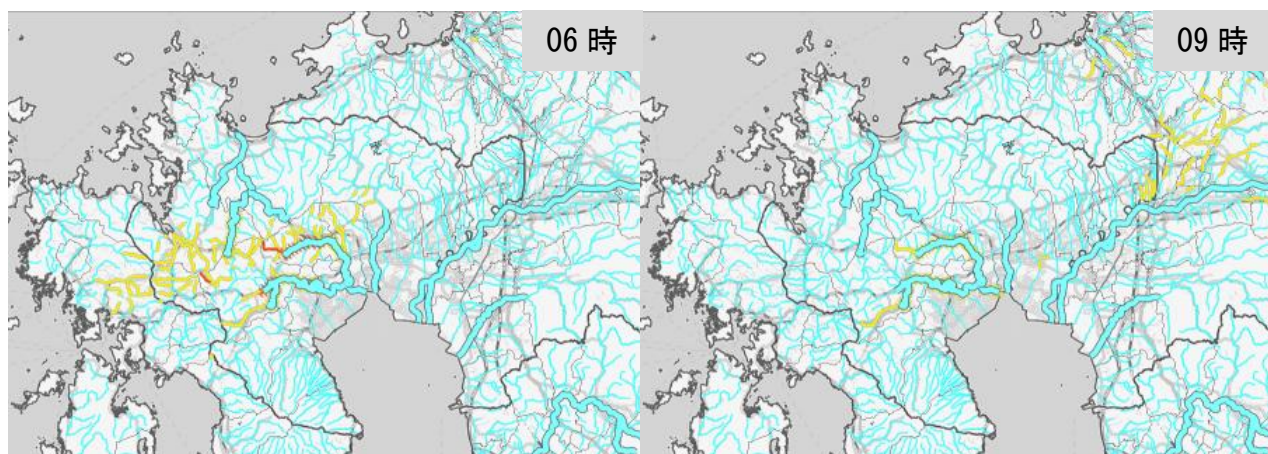
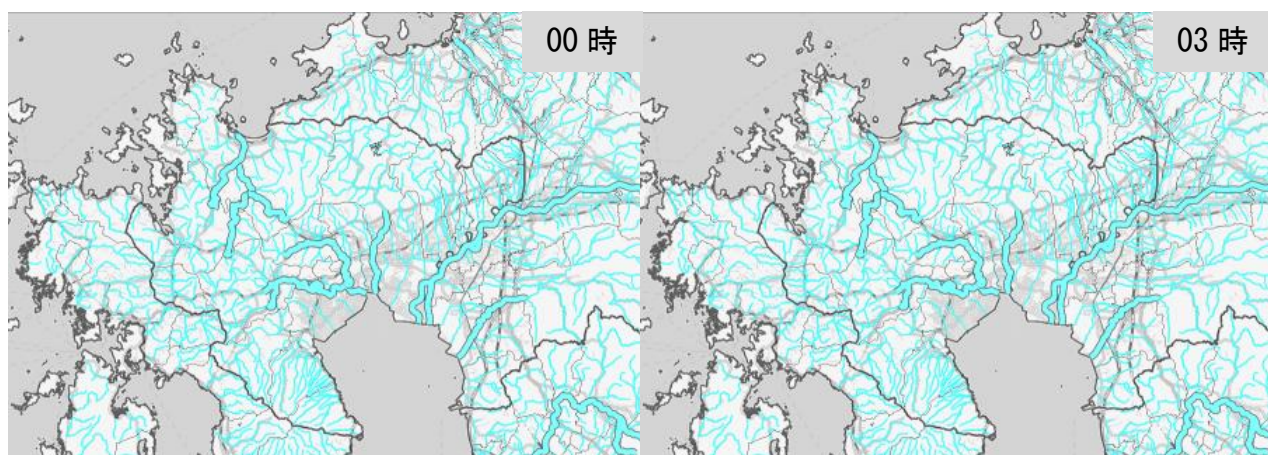
浸水キキクル（危険度分布） 8月19日00時～19日21時3時間毎



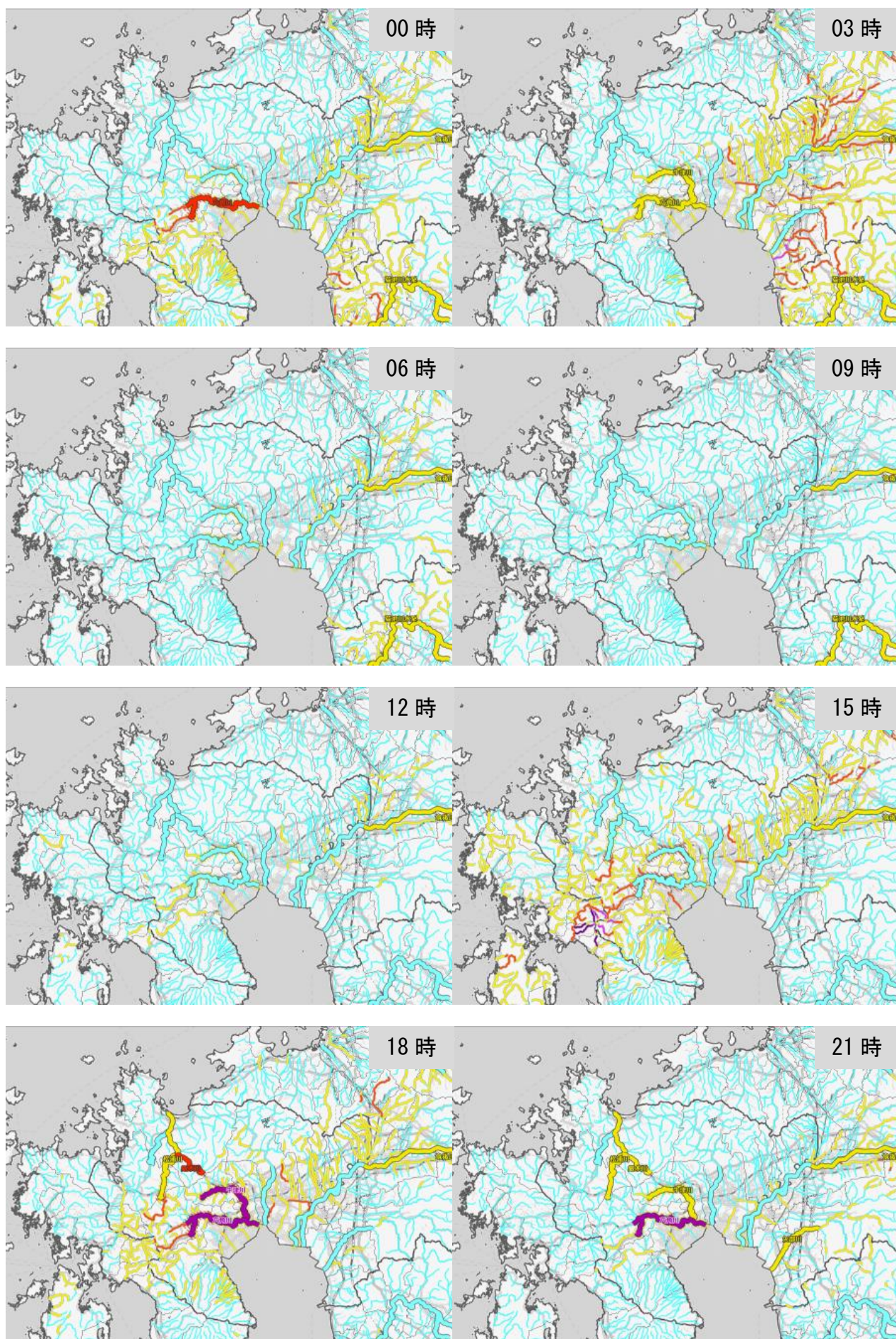
洪水キキクル（危険度分布） 8月11日00時～11日21時3時間毎



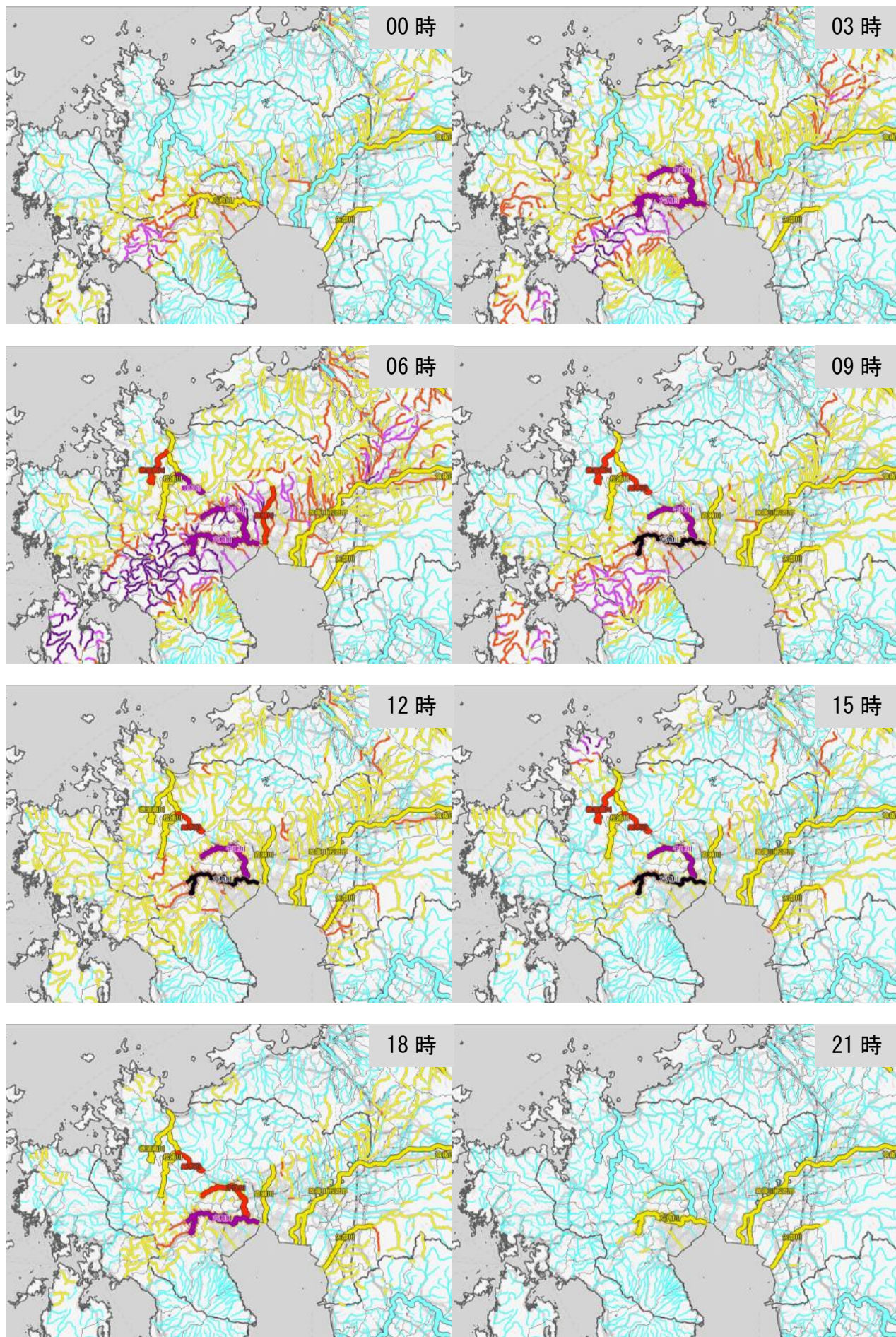
洪水キキクル（危険度分布） 8月12日00時～12日21時3時間毎



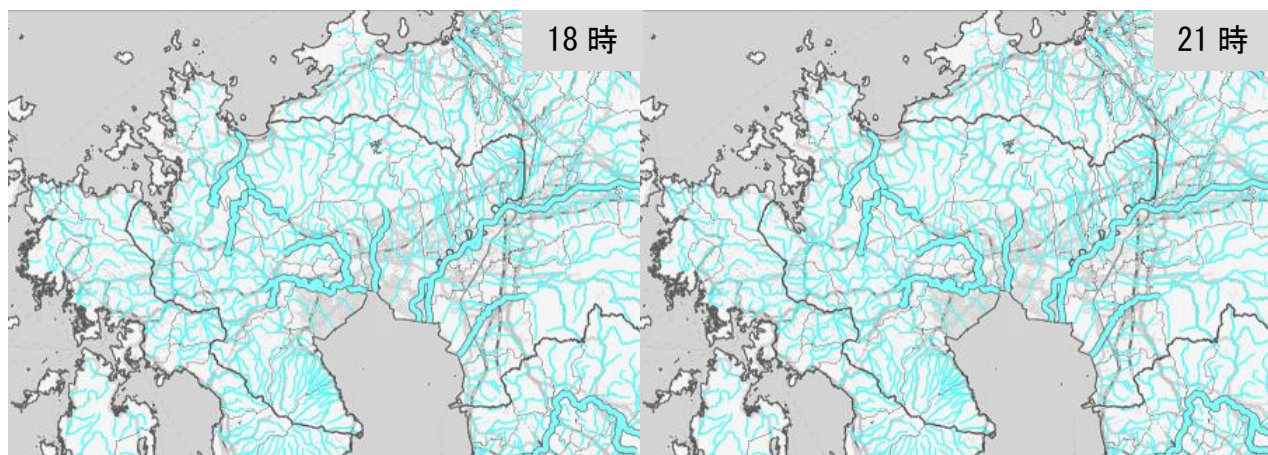
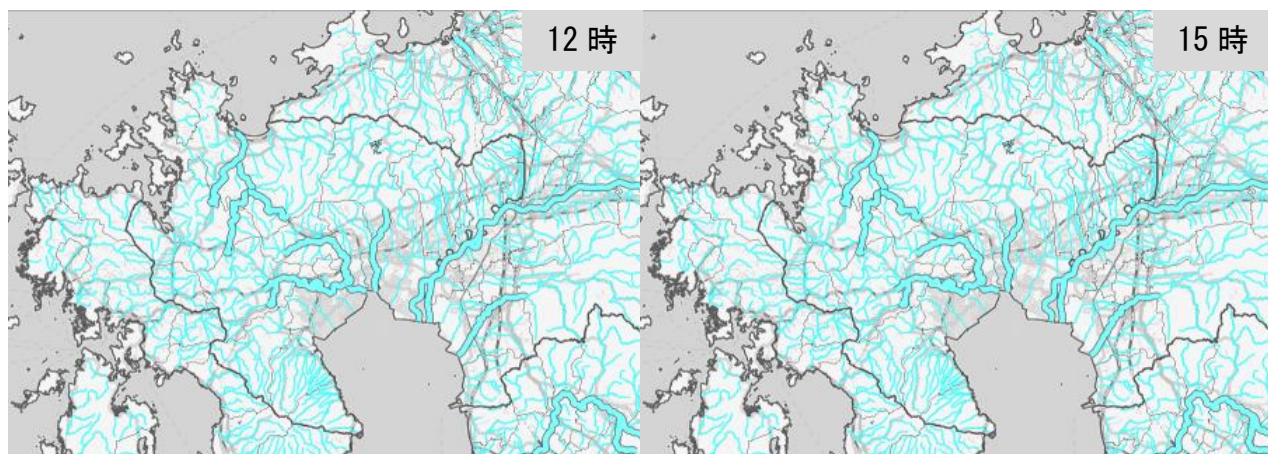
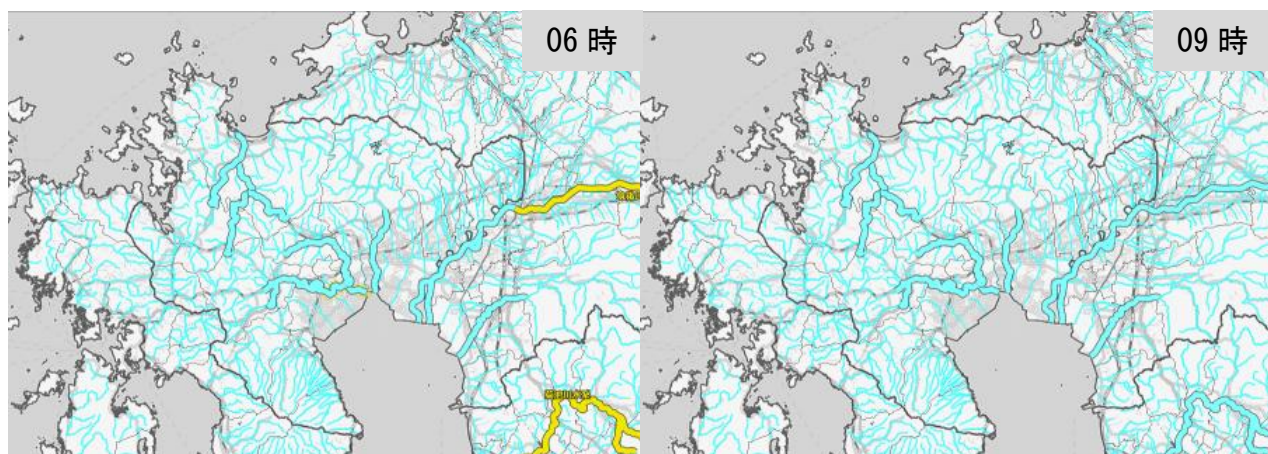
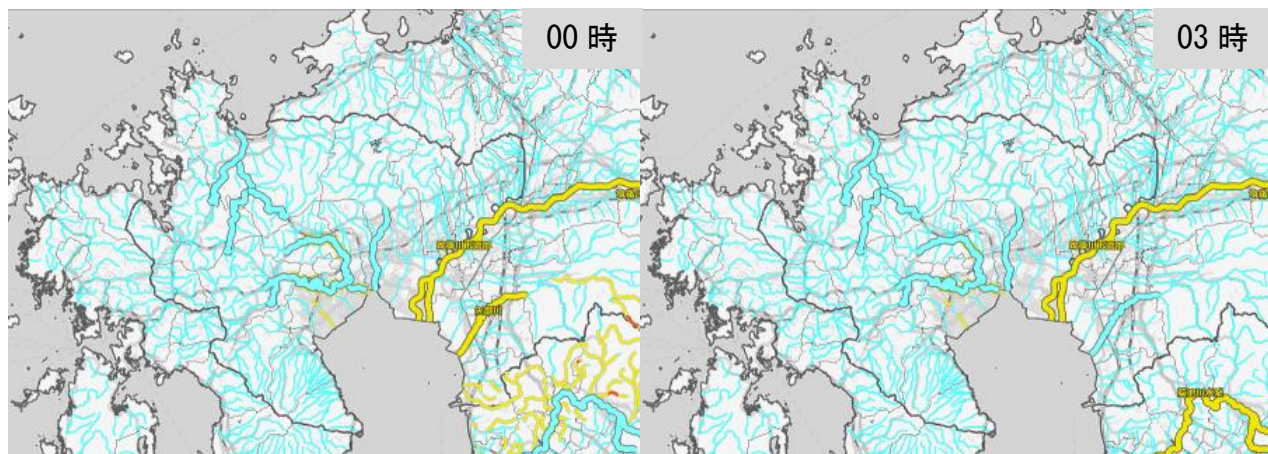
洪水キキクル（危険度分布） 8月13日00時～13日21時3時間毎



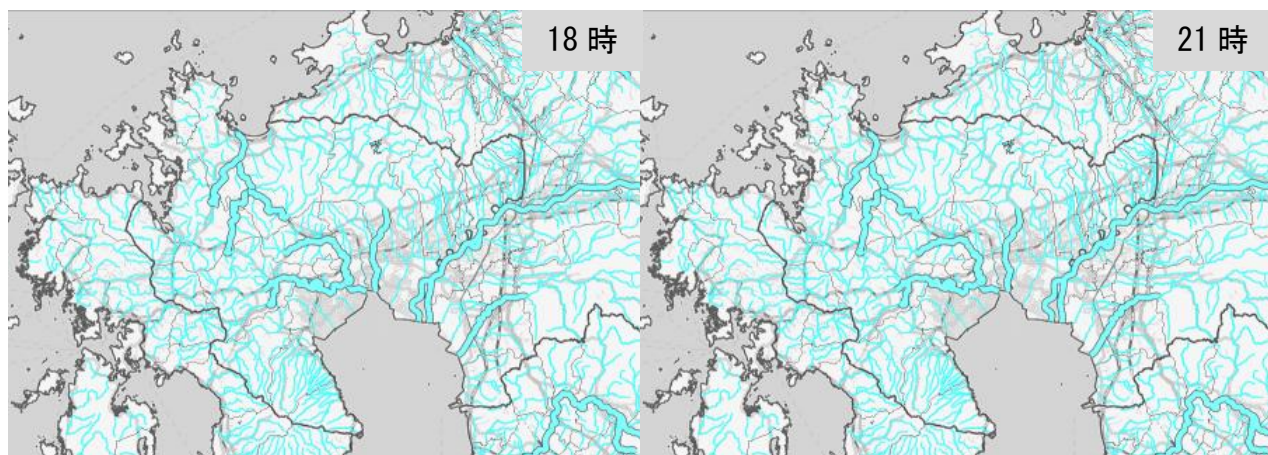
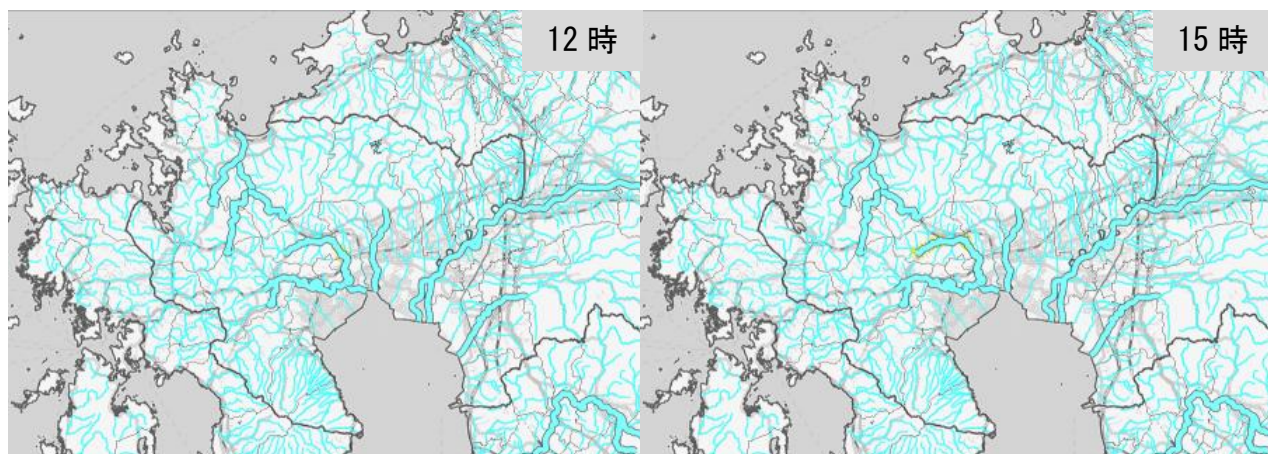
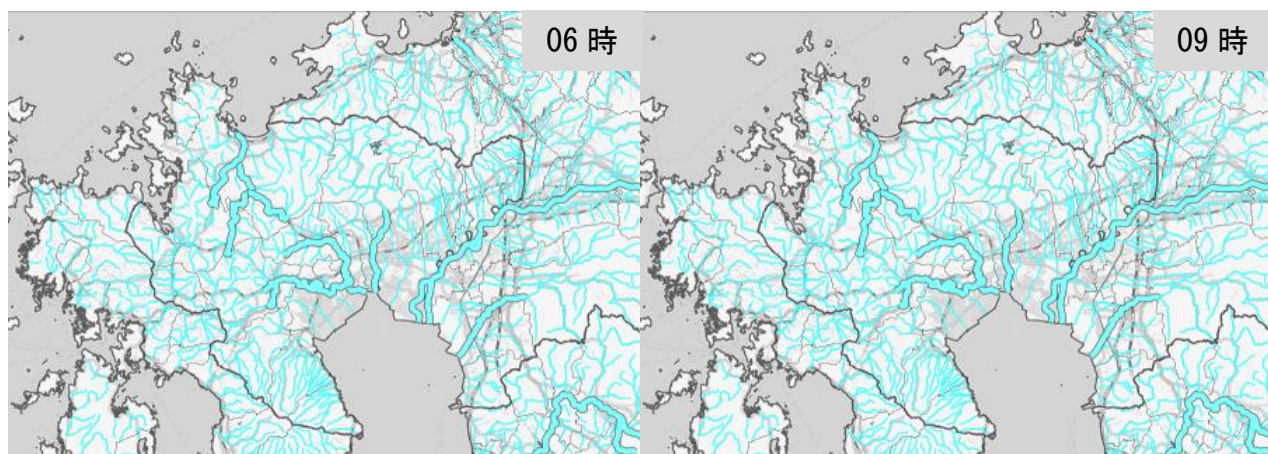
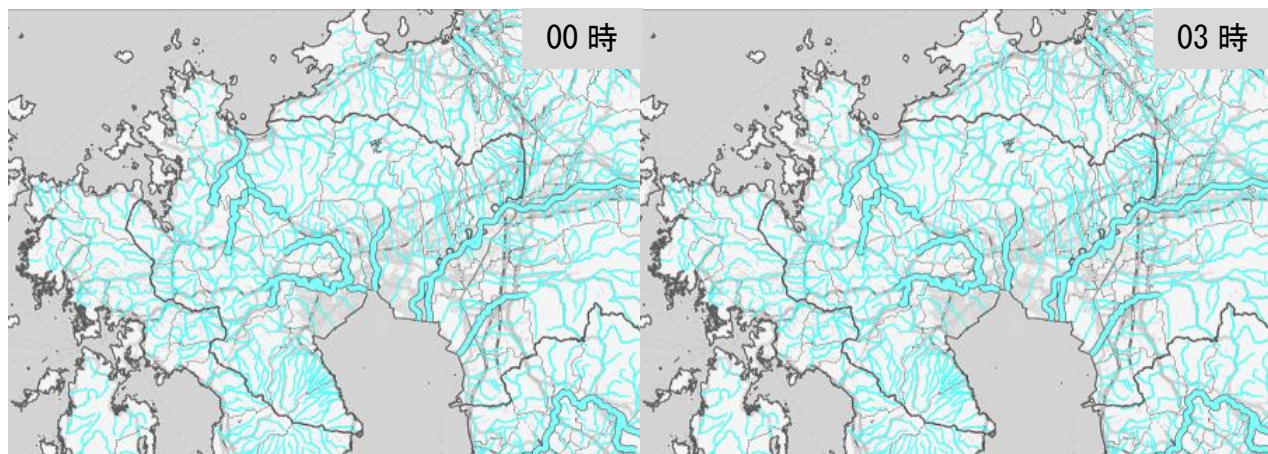
洪水キキクル（危険度分布） 8月14日00時～14日21時3時間毎



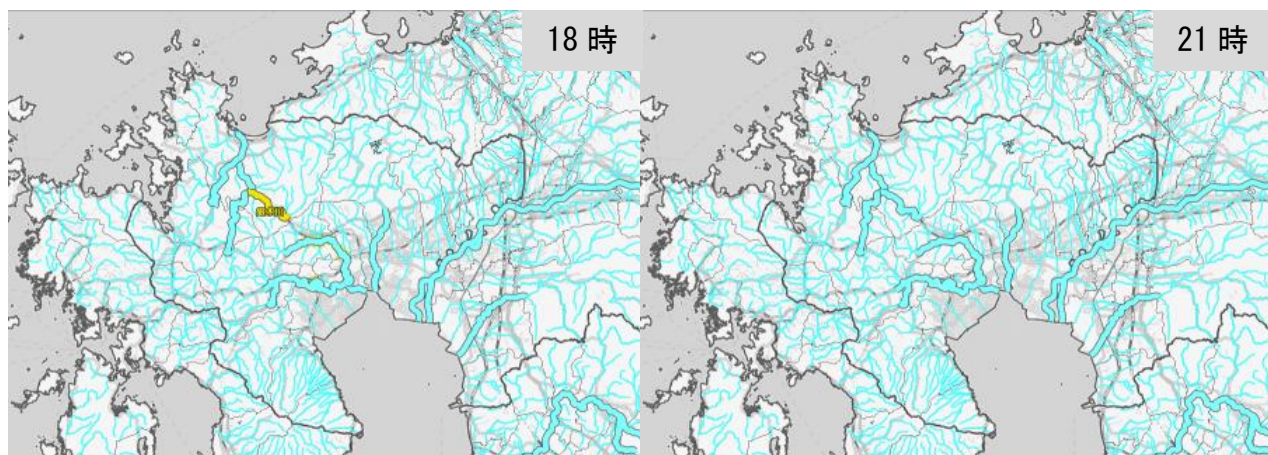
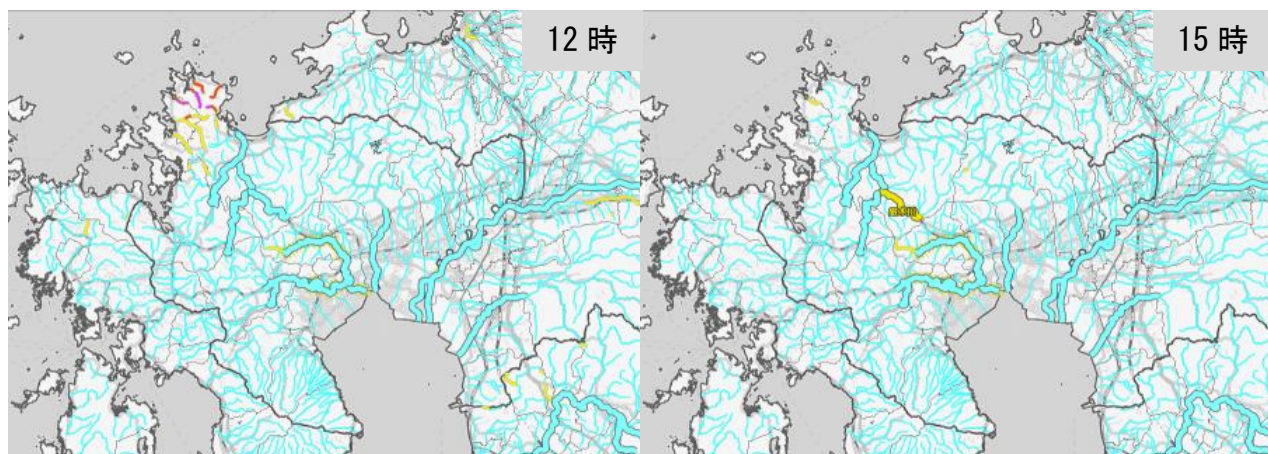
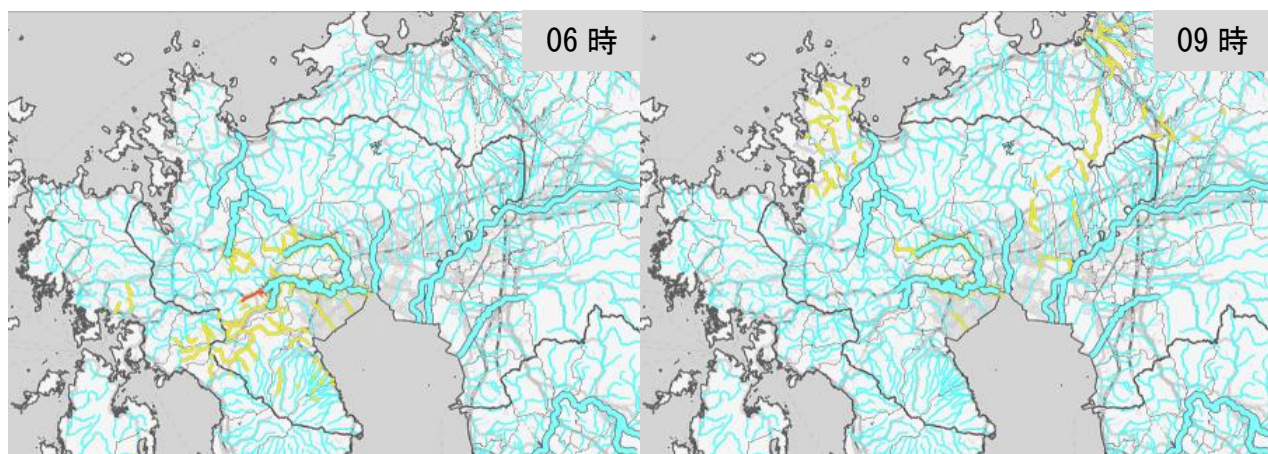
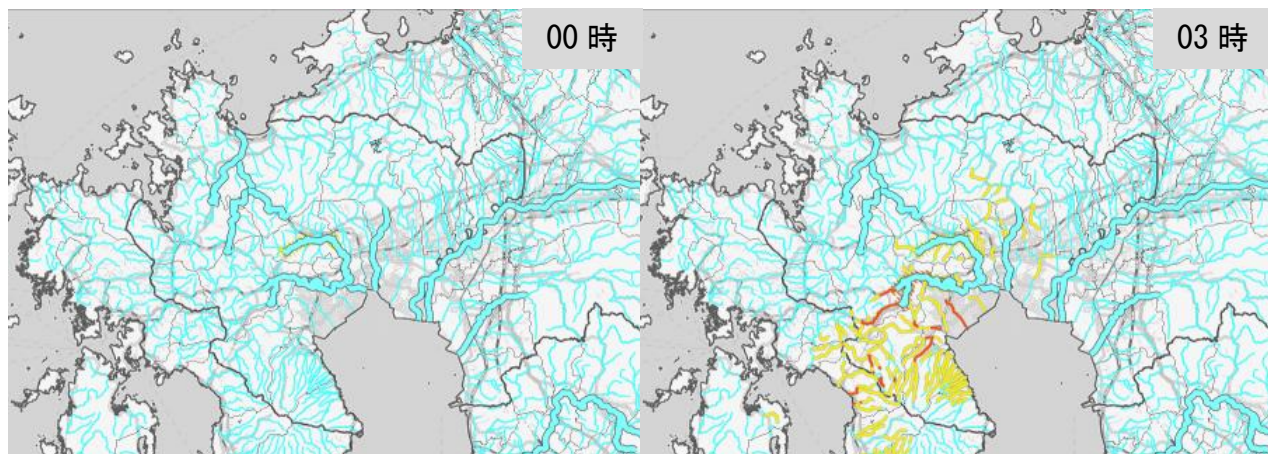
洪水キキクル（危険度分布） 8月15日00時～15日21時3時間毎



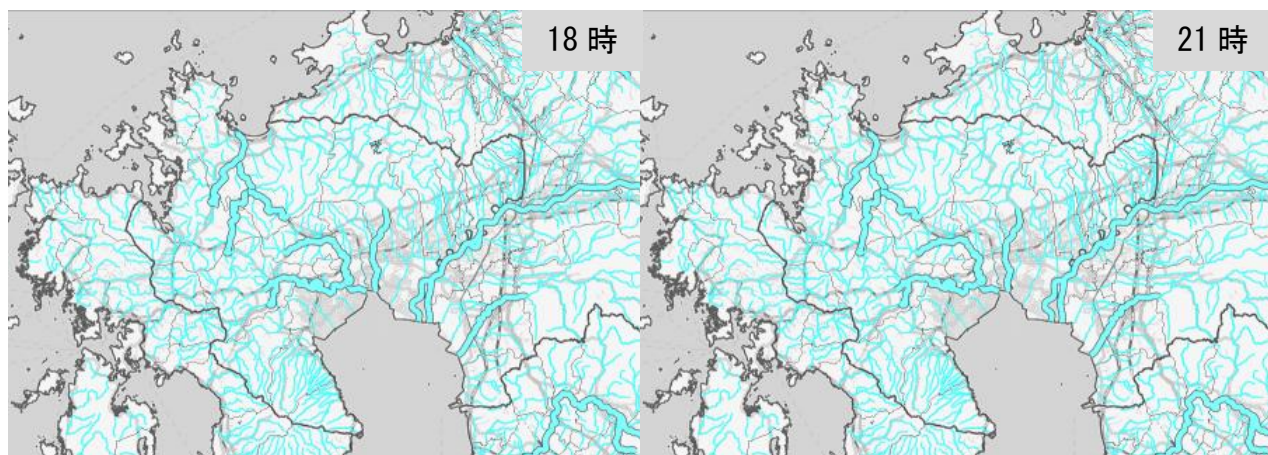
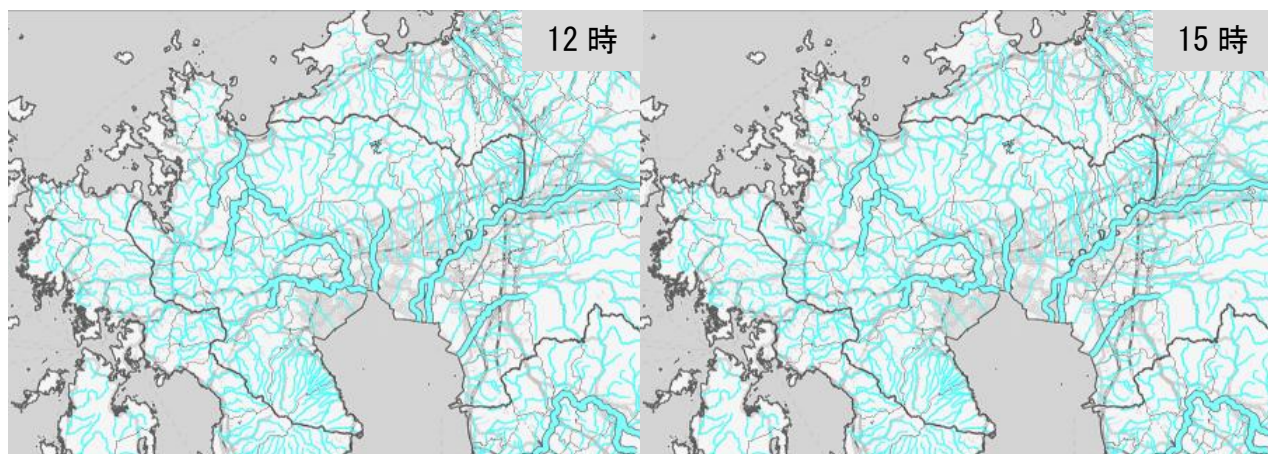
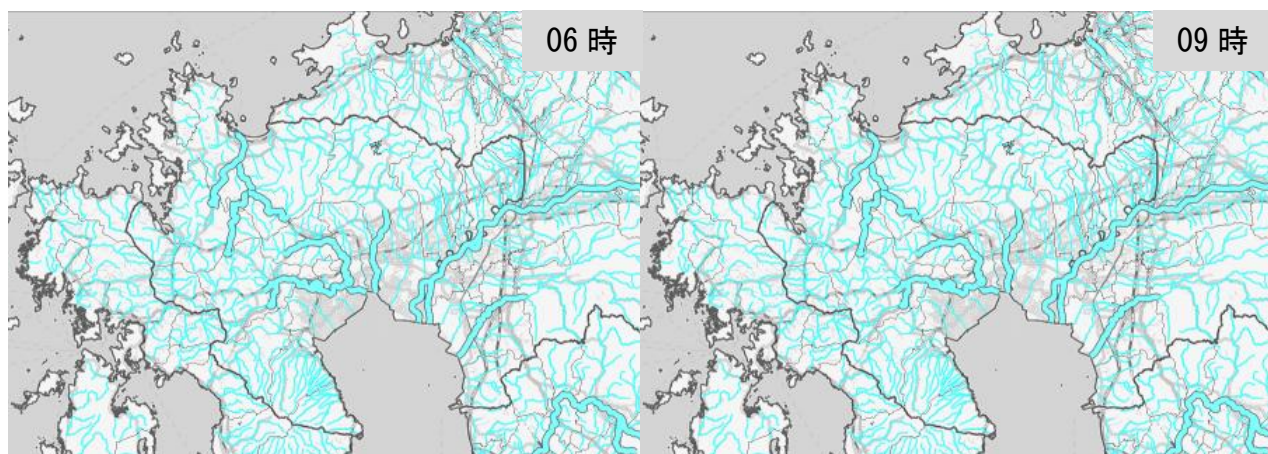
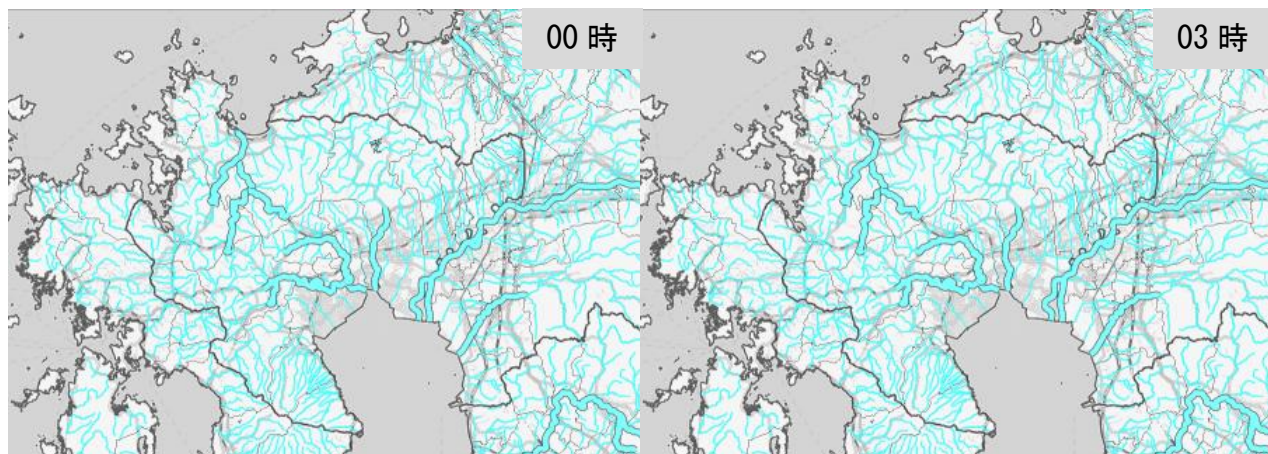
洪水キキクル（危険度分布） 8月16日00時～16日21時3時間毎



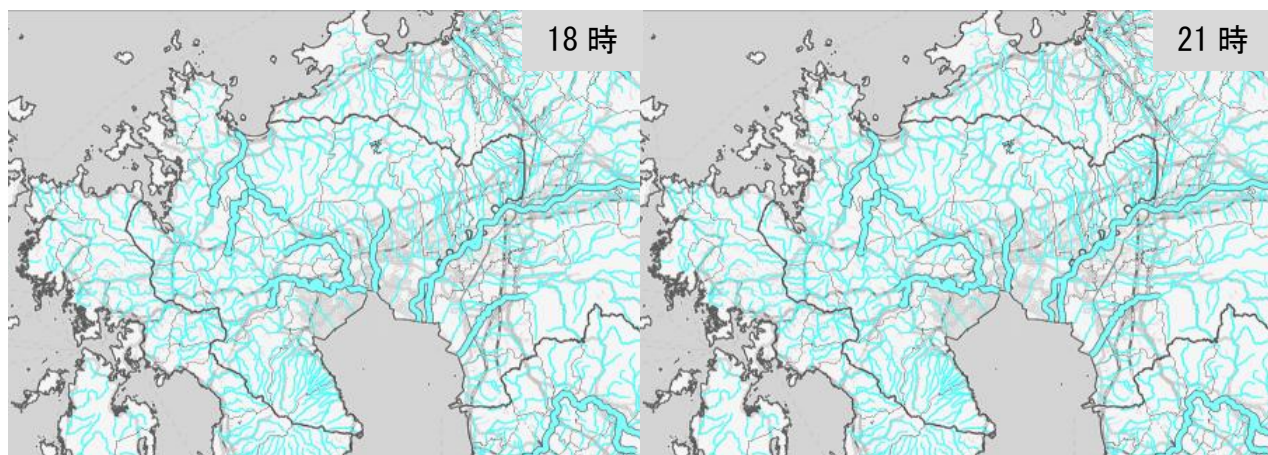
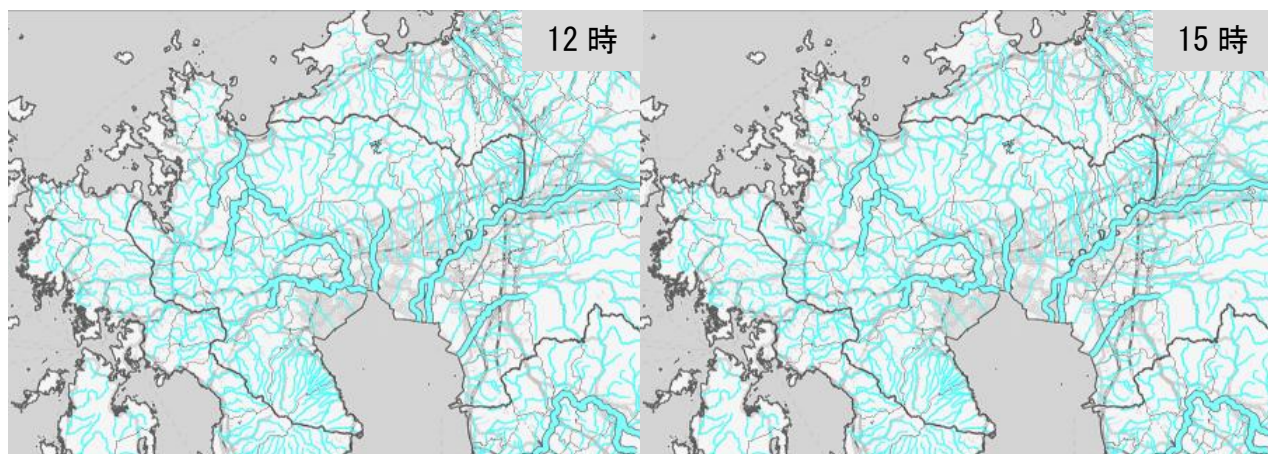
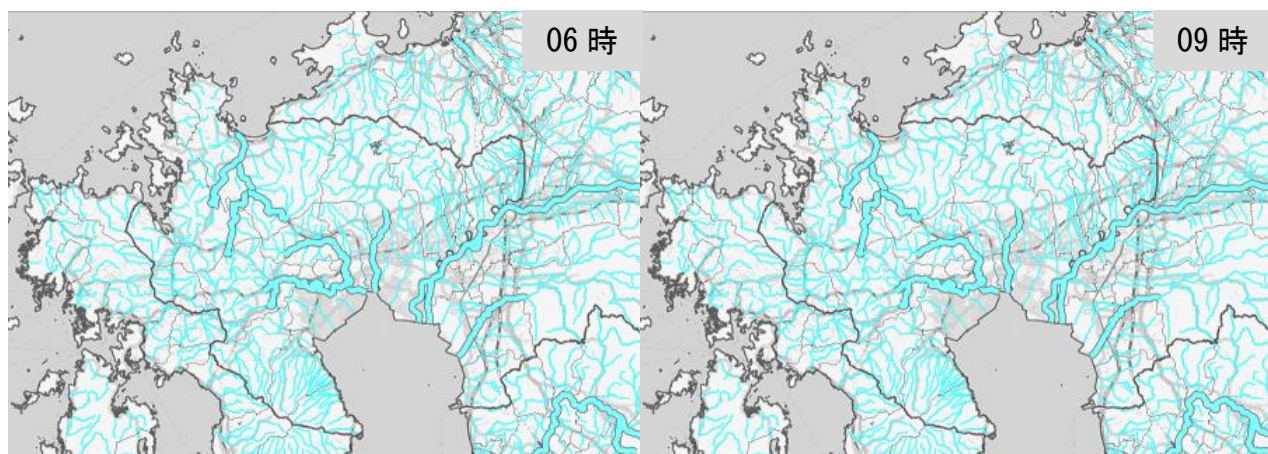
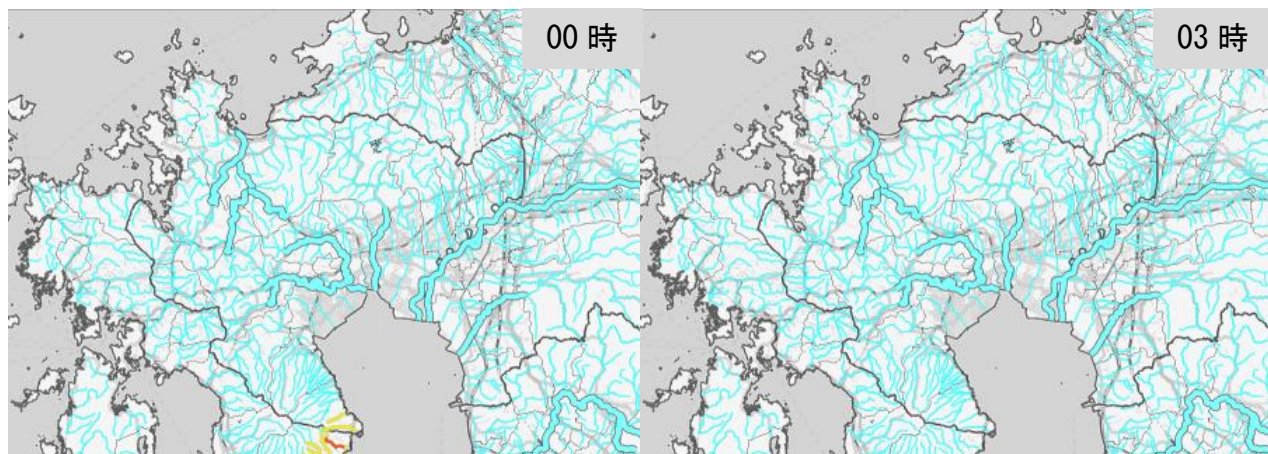
洪水キキクル（危険度分布） 8月17日00時～17日21時3時間毎



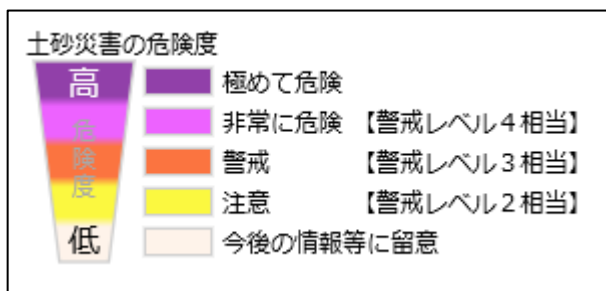
洪水キキクル（危険度分布） 8月18日00時～18日21時3時間毎



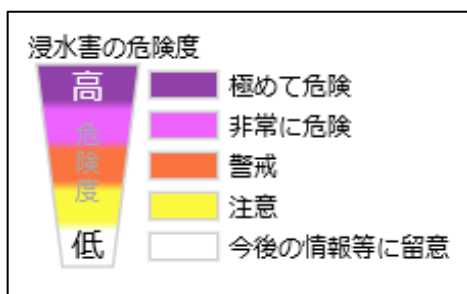
洪水キキクル（危険度分布） 8月19日00時～19日21時3時間毎



土砂キキクル（危険度分布）＜凡例＞



浸水キキクル（危険度分布）＜凡例＞



洪水キキクル（危険度分布）＜凡例＞

