

■ Staff waving tsunami flags will also evacuate promptly.

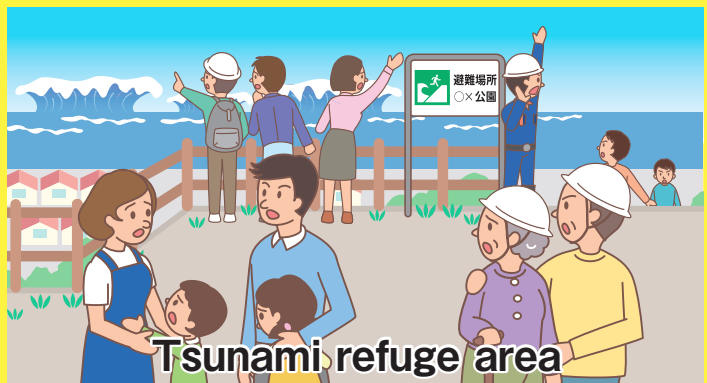


# Earthquake! Tsunami! Evacuate immediately!

**Keep moving to the highest ground possible!**

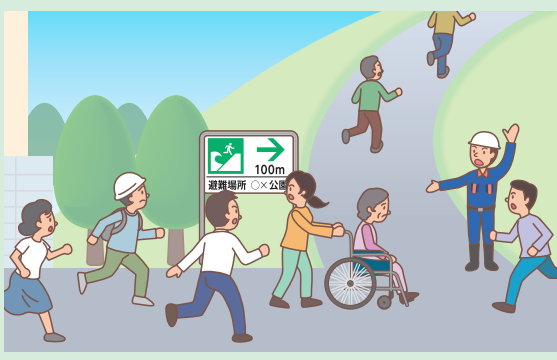


Tsunami refuge building



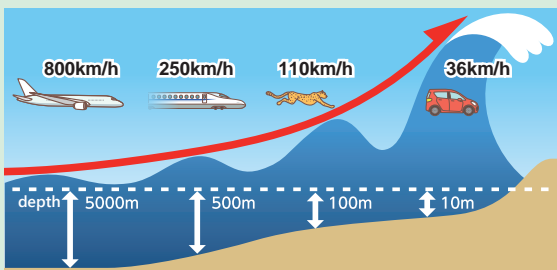
Tsunami refuge area

Evacuate immediately to a safe place (such as high ground or an evacuation building) if you feel shaking in coastal regions or hear a Tsunami Warning.



Evacuate **on foot** to avoid/prevent traffic jams.

Get the right information from TV, radio or a mobile phone.



If you see a tsunami, it's already too late to evacuate. Huge tsunamis can strike even in the absence of shaking.

## Evacuate to a tsunami safety area!

People in coastal or riverside areas should check the locations of **tsunami evacuation areas** and **evacuation buildings** on local government **tsunami hazard maps** in advance. Consider evacuation routes and interaction with local residents.



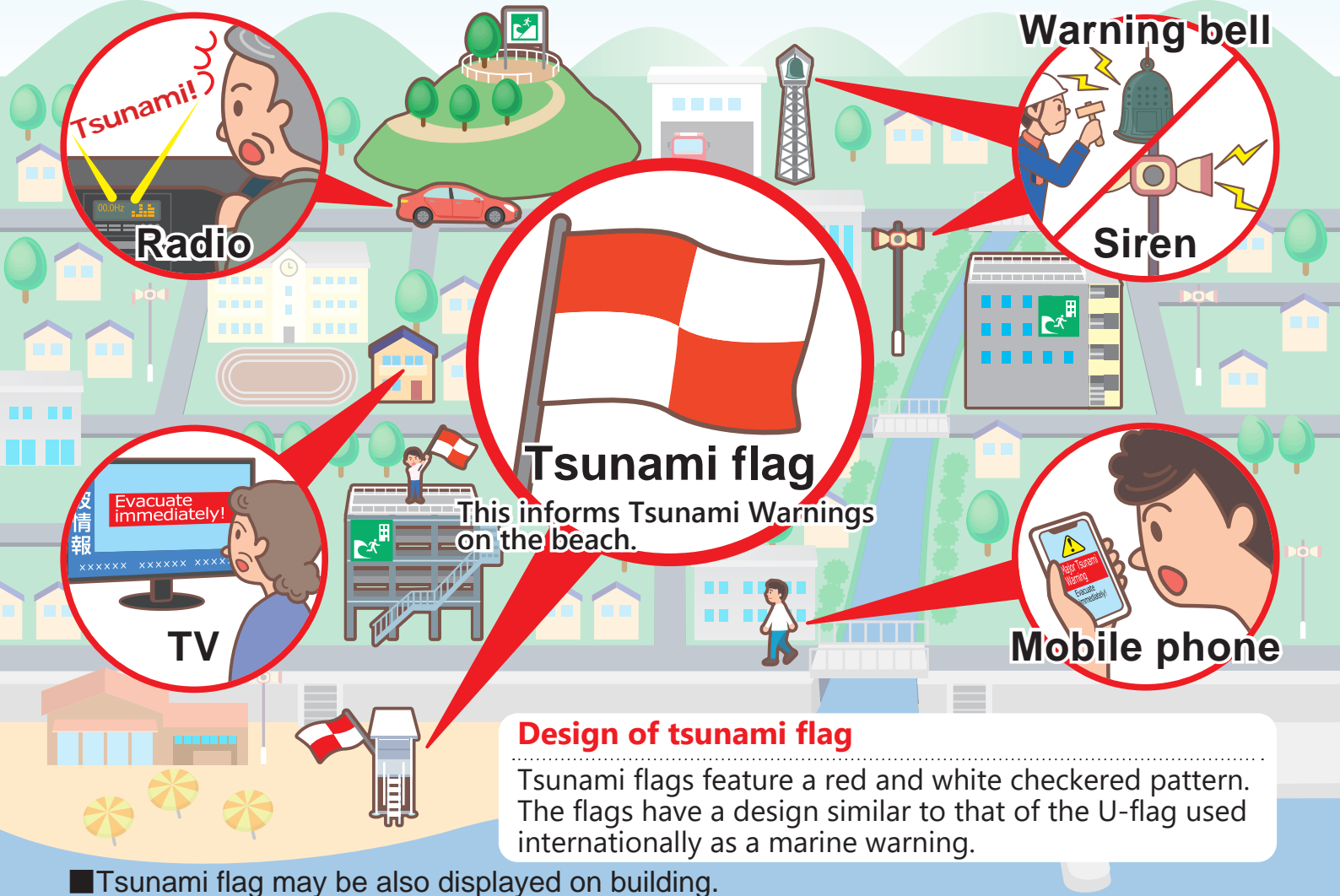
# Tsunami Warnings

## How to know Tsunami Warnings

\*Tsunami Warnings means Major Tsunami Warning, Tsunami Warning and Tsunami Advisory.

Tsunami Warnings\* can come from TV, radio, mobile phone and tsunami flag.

If you see **tsunami flag** in coastal regions, evacuate immediately to a safer place.



### Design of tsunami flag

Tsunami flags feature a red and white checkered pattern. The flags have a design similar to that of the U-flag used internationally as a marine warning.

■ Tsunami flag may be also displayed on building.

Categories		Tsunami Advisory	Tsunami Warning	Major Tsunami Warning		
Estimated maximum tsunami heights in Tsunami Information	Qualitative expression	(no expression)	High	Huge		
	Quantitative expression	1m (0.2m-1m)	3m (1m-3m)	5m (3m-5m)	10m (5m-10m)	over 10m (10m- )

Tsunami waves are expected to hit repeatedly. Do not leave safe ground until the warning is lifted.

**Never return to a coastal area while a Tsunami Warning is in effect!**

This indicates a SAFE refuge from tsunami.



Tsunami refuge area



Tsunami refuge building

This indicates a DANGER of tsunami.



Tsunami hazard zone

This indicates TSUNAMI WARNINGS are issued.



Tsunami flag


**内閣府**  
 Cabinet Office  
 Director for Research and Planning,  
 Director General for Disaster Management



1-6-1 Nagata-cho, Chiyoda-ku, Tokyo 100-8914, Japan.  
 TEL : 03-5253-2111 FAX : 03-3501-6820  
 Website URL : <http://www.bousai.go.jp/index-e.html>


**総務省消防庁**  
 Fire and Disaster Management Agency  
 Disaster Management Division,  
 Civil Protection and Disaster Management Department



2-1-2 Kasumigaseki, Chiyoda-ku, Tokyo 100-8926, Japan.  
 TEL : 03-5253-5111 FAX : 03-5253-7535  
 Website URL : <https://www.fdma.go.jp/en/post1.html>


**気象庁**  
 Japan Meteorological Agency  
 Office of Earthquake and Tsunami Disaster Mitigation,  
 Earthquake and Tsunami Observation Division,  
 Seismology and Volcanology Department



3-6-9 Toranomon, Minato City, Tokyo 105-8431, Japan.  
 TEL : 03-6758-3900 FAX : 03-3584-8644  
 Website URL : <https://www.jma.go.jp/jma/indexe.html>