

火山観測 Summary of Observations on Volcanoes

常時観測 平成27年(2015年)6月

Continuous Observation in June,2015

(1)アトサプリ

震動観測(Seismic Observation)

Observation Point: AAT2	月計 total	最大(起日) max (date)
火山性地震回数(Number of volcanic earthquakes)	13	12 (14)
火山性微動回数(Number of volcanic tremors)	-	-
微動継続時間(Duration of volcanic tremors) (min.)	-	-

Note: AAT2 (N43°37.11' E144°27.01' H156m)

遠望観測(Visual Observation)

	最大(起日) max (date)
噴煙量(Quantity of plumes) (JMA's scale)	1 (abbr.)
噴煙の高さ(Height of plumes) (m)	200 (22,28)

噴煙の色(Color of plumes)	W
他の火山現象(Other volcanic phenomena)	-

Note: Plumes were from Upper part of F1 Fumaroles(Location U),

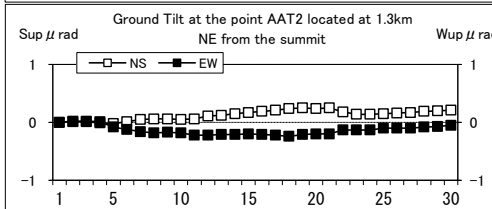
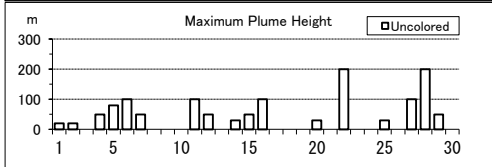
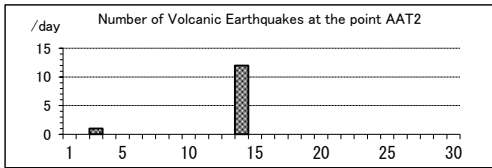
Middle part of F1 Fumaroles(M) Lower part of

F1 Fumaroles(L) and/or F2 Fumaroles(F)

Note: Uncolored:Plume color was White(W).

Colored:Plume color was Light white(LW), Grayish white(GW), Gray(G) and other.

Atosanupuri: June,2015



(2)雌阿寒岳

震動観測(Seismic Observation)

Observation Point: MEAB	月計 total	最大(起日) max (date)
火山性地震回数(Number of volcanic earthquakes)	199	24 (17)
火山性微動回数(Number of volcanic tremors)	-	-
微動継続時間(Duration of volcanic tremors) (min.)	-	-

Note: MEAB (N43°22.78' E143°58.65' H680m)

遠望観測(Visual Observation)

	最大(起日) max (date)
噴煙量(Quantity of plumes) (JMA's scale)	1 (abbr.)
噴煙の高さ(Height of plumes) (m)	100 (abbr.)

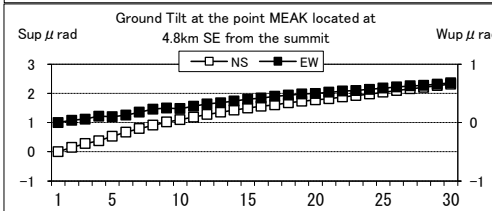
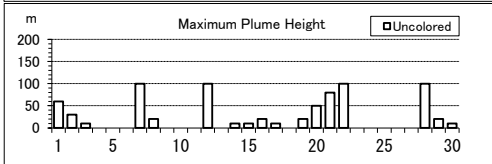
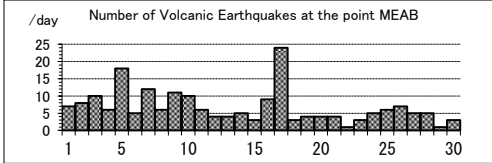
噴煙の色(Color of plumes)	W
他の火山現象(Other volcanic phenomena)	-

Note: Plumes were from the Ponmachineshiri Summit Crater(LocationT), the Nakamachineshiri Crater(U), the Akanuma Crater(M) and/or Ponmachineshiri NW Fumaroles(N).

Note: Uncolored:Plume color was White(W).

Colored:Plume color was Light white(LW), Grayish white(GW), Gray(G) and other.

Meakandake: June,2015



(3)大雪山

震動観測(Seismic Observation)

Observation Point: TIAE	月計 total	最大(起日) max (date)
火山性地震回数(Number of volcanic earthquakes)	7	2 (19)
火山性微動回数(Number of volcanic tremors)	-	-
微動継続時間(Duration of volcanic tremors) (min.)	-	-

Note: TIAE (N43°39.66' E142°49.62' H1607m)

遠望観測(Visual Observation)

	最大(起日) max (date)
噴煙量(Quantity of plumes) (JMA's scale)	1 (abbr.)
噴煙の高さ(Height of plumes) (m)	200 (12)

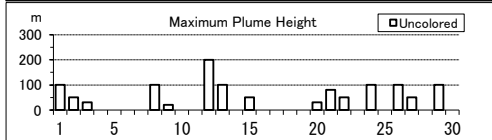
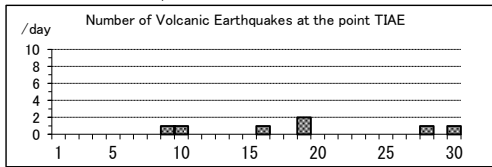
噴煙の色(Color of plumes)	W
他の火山現象(Other volcanic phenomena)	-

Note: Plumes were from 1 Fumaroles(Location I)

Note: Uncolored:Plume color was White(W).

Colored:Plume color was Light white(LW), Grayish white(GW), Gray(G) and other.

Taisetsuzan: June,2015



(4)十勝岳

震動観測(Seismic Observation) Observation Point: TOKH	月計 total	最大(起日) max (date)
火山性地震回数(Number of volcanic earthquakes)	283	37 (1)
火山性微動回数(Number of volcanic tremors)	1	1 (22)
微動継続時間(Duration of volcanic tremors) (min.)	1	1 (22)

Note: TOKH (N43°25.96' E142°40.15' H1355m)

遠望観測(Visual Observation)	最大(起日) max (date)
噴煙量(Quantity of plumes) (JMA's scale)	1 (abbr.)
噴煙の高さ(Height of plumes) (m)	200 (16)

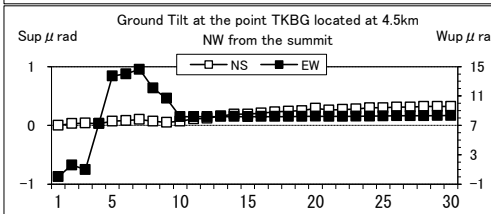
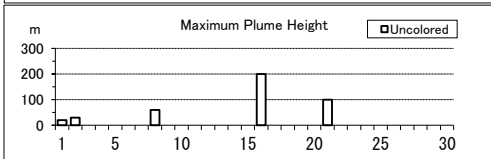
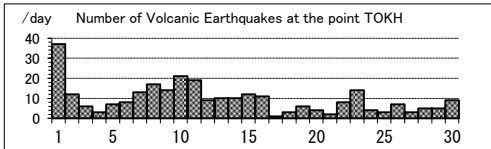
噴煙の色(Color of plumes)	W
他の火山現象(Other volcanic phenomena)	-

Note: Plumes were from the Taisho Crater(Location x), the 62 crater Area(P,Q,Y),the Furikozawa Fumaroles (F) and/or the Kyufun Crater (Z).

Note: Uncolored:Plume color was White(W).

Colored:Plume color was Light white(LW), Grayish white(GW), Gray(G) and other.

Tokachidake: June,2015



(5)樽前山

震動観測(Seismic Observation) Observation Point: TARC	月計 total	最大(起日) max (date)
火山性地震回数(Number of volcanic earthquakes)	61	6 (8)
火山性微動回数(Number of volcanic tremors)	-	-
微動継続時間(Duration of volcanic tremors) (min.)	-	-

Note: TARC (N42°42.23' E141°22.64' H638m)

遠望観測(Visual Observation)	最大(起日) max (date)
噴煙量(Quantity of plumes) (JMA's scale)	1 (abbr.)
噴煙の高さ(Height of plumes) (m)	100 (7)

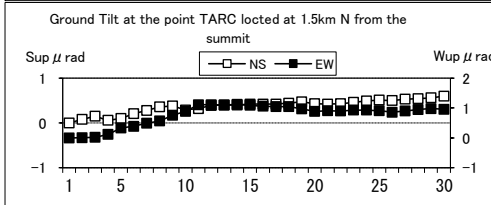
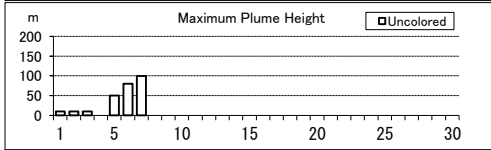
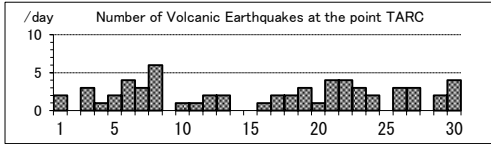
噴煙の色(Color of plumes)	W
他の火山現象(Other volcanic phenomena)	-

Note: Plumes were from the Summit Area(Location A, B and/or E).

Note: Uncolored:Plume color was White(W).

Colored:Plume color was Light white(LW), Grayish white(GW), Gray(G) and other.

Tarumaesan: June,2015



(6)倶多楽

震動観測(Seismic Observation) Observation Point: KUJG	月計 total	最大(起日) max (date)
火山性地震回数(Number of volcanic earthquakes)	-	-
火山性微動回数(Number of volcanic tremors)	-	-
微動継続時間(Duration of volcanic tremors) (min.)	-	-

Note:KUJG (N42°29.50' E141°07.68' H327m)

遠望観測(Visual Observation)	最大(起日) max (date)
噴煙量(Quantity of plumes) (JMA's scale)	1 (abbr.)
噴煙の高さ(Height of plumes) (m)	50 (6,11)

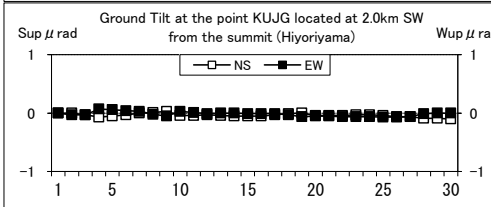
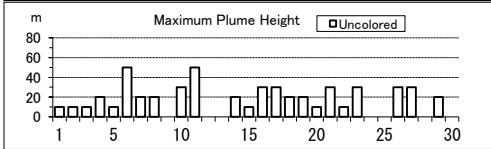
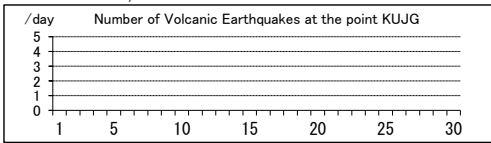
噴煙の色(Color of plumes)	W
他の火山現象(Other volcanic phenomena)	-

Note: Plumes were from Hiyoriyama Fumarole(Location H)

Note: Uncolored:Plume color was White(W).

Colored:Plume color was Light white(LW), Grayish white(GW), Gray(G) and other.

Kuttara: June,2015



(7)有珠山

震動観測(Seismic Observation)		
Observation Point: USUA	月計 total	最大(起日) max (date)
火山性地震回数(Number of volcanic earthquakes)	28	4 (2.9)
火山性微動回数(Number of volcanic tremors)	-	-
微動継続時間(Duration of volcanic tremors) (min.)	-	-

Note: USUA (N42°31.70' E140°50.17' H246m)

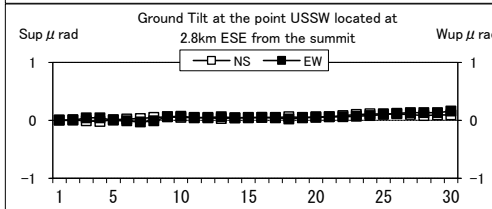
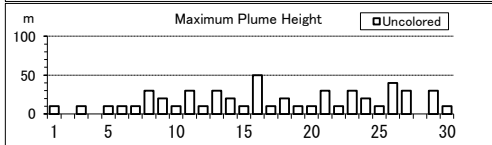
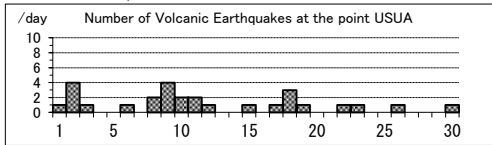
遠望観測(Visual Observation)		最大(起日) max (date)
噴煙量(Quantity of plumes) (JMA's scale)	1 (abbr.)	
噴煙の高さ(Height of plumes) (m)	50 (16)	

噴煙の色(Color of plumes)	W
他の火山現象(Other volcanic phenomena)	-

Note: Plumes were from the Summit Area of Usuzan(Location P), Mt.showa-shinzan(Z), Nishi-yama vent group(N) and Konpira-yama vent group(K).

Note: Uncolored:Plume color was White(W).
Colored:Plume color was Light white(LW), Grayish white(GW), Gray(G) and other.

Usuzan: June,2015



(8)北海道駒ヶ岳

震動観測(Seismic Observation)		
Observation Point: KOMA	月計 total	最大(起日) max (date)
火山性地震回数(Number of volcanic earthquakes)	-	-
火山性微動回数(Number of volcanic tremors)	-	-
微動継続時間(Duration of volcanic tremors) (min.)	-	-

Note: KOMA (N42°03.19' E140°38.29' H265m)

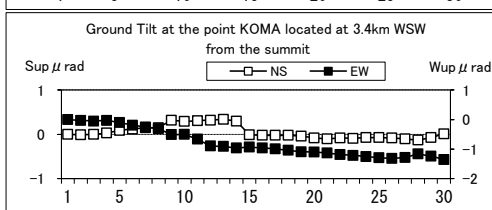
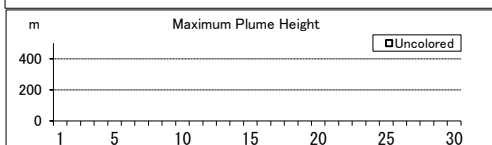
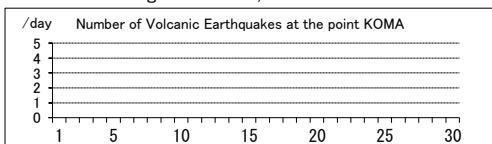
遠望観測(Visual Observation)		最大(起日) max (date)
噴煙量(Quantity of plumes) (JMA's scale)	-	
噴煙の高さ(Height of plumes) (m)	-	

噴煙の色(Color of plumes)	-
他の火山現象(Other volcanic phenomena)	-

Note: Plumes were from the Showa-4 Crater(Location D1) and/or the 96 South Crater(D2).

Note: Uncolored:Plume color was White(W).
Colored:Plume color was Light white(LW), Grayish white(GW), Gray(G) and other.

Hokkaido-Komagatake: June,2015



(9)恵山

震動観測(Seismic Observation)		
Observation Point: ESDK	月計 total	最大(起日) max (date)
火山性地震回数(Number of volcanic earthquakes)	1	1 (29)
火山性微動回数(Number of volcanic tremors)	-	-
微動継続時間(Duration of volcanic tremors) (min.)	-	-

Note: ESDK (N41°48.69' E141°09.73' H369m)

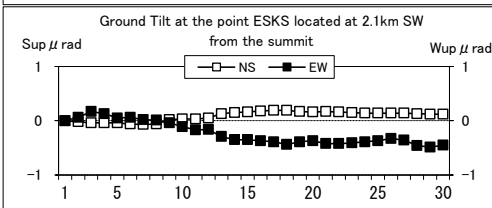
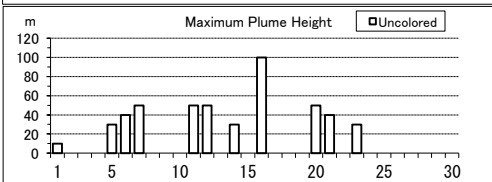
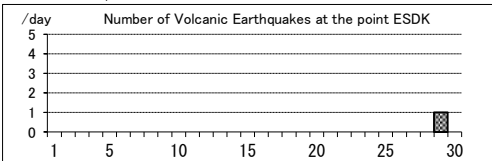
遠望観測(Visual Observation)		最大(起日) max (date)
噴煙量(Quantity of plumes) (JMA's scale)	1 (abbr.)	
噴煙の高さ(Height of plumes) (m)	100 (16)	

噴煙の色(Color of plumes)	W
他の火山現象(Other volcanic phenomena)	-

Note: Plumes were from X Crater(Location x), Y Crater(Y)

Note: Uncolored:Plume color was White(W).
Colored:Plume color was Light white(LW), Grayish white(GW), Gray(G) and other.

Esan: June,2015



(10)岩木山

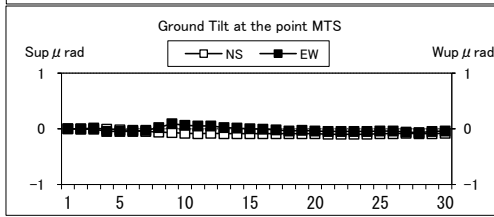
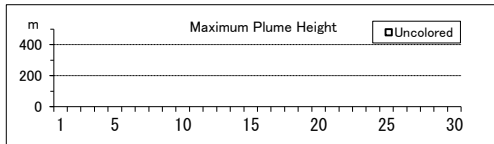
遠望観測(Visual Observation)		最大(起日) max (date)
噴煙量(Quantity of plumes) (JMA's scale)	-	
噴煙の高さ(Height of plumes) (m)	-	
噴煙の色(Color of plumes)	-	
他の火山現象(Other volcanic phenomena)	-	

Note: Plumes were from Iwaki Summit

Note: Uncolored:Plume color was White(W).

Colored:Plume color was Light white(LW), Grayish white(GW), Gray(G) and other.

Iwakisan: June,2015



(11)秋田焼山

震動観測(Seismic Observation)		月計 total	最大(起日) max (date)
Observation Point: AYBN			
火山性地震回数(Number of volcanic earthquakes)	4	3	(6)
火山性微動回数(Number of volcanic tremors)	-	-	-
微動継続時間(Duration of volcanic tremors) (min.)	-	-	-

Note: AYBN (N39°56.72' E140°43.17' H738m)

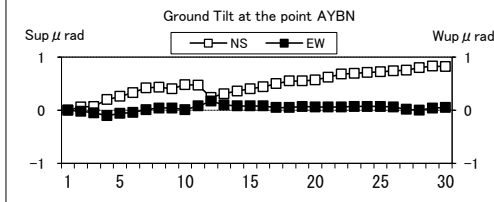
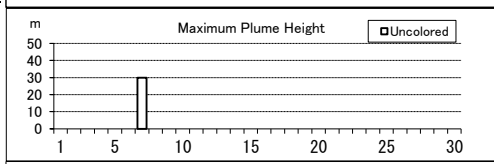
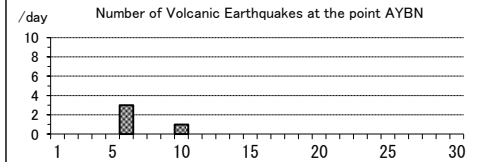
遠望観測(Visual Observation)		最大(起日) max (date)
噴煙量(Quantity of plumes) (JMA's scale)	1	(7)
噴煙の高さ(Height of plumes) (m)	30	(7)
噴煙の色(Color of plumes)	W	
他の火山現象(Other volcanic phenomena)	-	

Note: Plumes were from Yakeyama Summit

Note: Uncolored:Plume color was White(W).

Colored:Plume color was Light white(LW), Grayish white(GW), Gray(G) and other.

Akita-Yakeyama : June,2015



(12)岩手山

震動観測(Seismic Observation)		月計 total	最大(起日) max (date)
Observation Point: UMG2, NIJMV(NIED)			
火山性地震回数(Number of volcanic earthquakes)	31	4	(10)
火山性微動回数(Number of volcanic tremors)	-	-	-
微動継続時間(Duration of volcanic tremors) (min.)	-	-	-

Note:UMG2 (N39°49.94' E141°02.45' H609m), NIJMV(NIED) (N39°53.01' E140°56.14' H804m)

遠望観測(Visual Observation)		最大(起日) max (date)
噴煙量(Quantity of plumes) (JMA's scale)	-	
噴煙の高さ(Height of plumes) (m)	-	

噴煙の色(Color of plumes)	-
他の火山現象(Other volcanic phenomena)	-

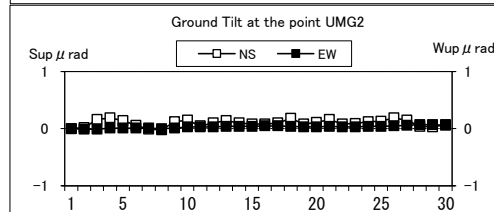
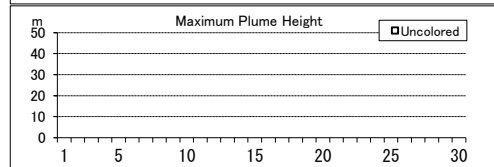
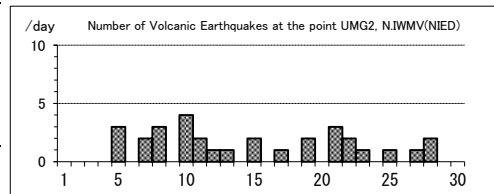
Note: Plumes were from the Kurokurayama Summit(Location x), the Ojigokudani(Y-6)

Note: Uncolored:Plume color was White(W).*

Colored:Plume color was Light white(LW), Grayish white(GW), Gray(G) and other.

*Uncolored plumes mean only White(W) color since 1st April, 2010.

Iwatesan: June,2015



(13)秋田駒ヶ岳

震動観測(Seismic Observation)

	月計 total	最大(起日) max (date)
火山性地震回数(Number of volcanic earthquakes)	17	3 (3.22)
火山性微動回数(Number of volcanic tremors)	-	-
微動継続時間(Duration of volcanic tremors) (min.)	-	-

Note: AKHC (N39°46.08' E140°48.41' H1304m)

遠望観測(Visual Observation)

	最大(起日) max (date)
噴煙量(Quantity of plumes) (JMA's scale)	-
噴煙の高さ(Height of plumes) (m)	-

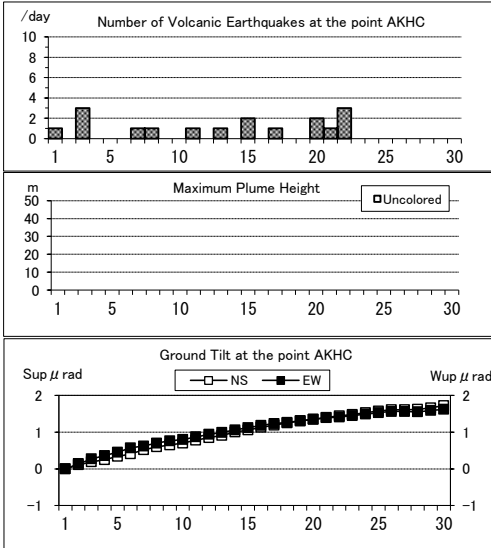
噴煙の色(Color of plumes)	-
他の火山現象(Other volcanic phenomena)	-

Note: Plumes were from Medake Summit(Location Z-1a), Geothermal area on the N part of Medake Summit(Z-1b), W part of Medake Summit(Z-1c), Geothermal area on the NE slope of Medake Summit(Z-1d) and/or Crater on the E part of Medake Summit(Z-1e)

Note: Uncolored:Plume color was White(W).

Colored:Plume color was Light white(LW), Grayish white(GW), Gray(G) and other.

Akita-Komagatake: June,2015



(14)鳥海山

震動観測(Seismic Observation)

	月計 total	最大(起日) max (date)
火山性地震回数(Number of volcanic earthquakes)	-	-
火山性微動回数(Number of volcanic tremors)	-	-
微動継続時間(Duration of volcanic tremors) (min.)	-	-

Note: CHKN (N39°07.75' E139°56.36' H335m)

遠望観測(Visual Observation)

	最大(起日) max (date)
噴煙量(Quantity of plumes) (JMA's scale)	-
噴煙の高さ(Height of plumes) (m)	-

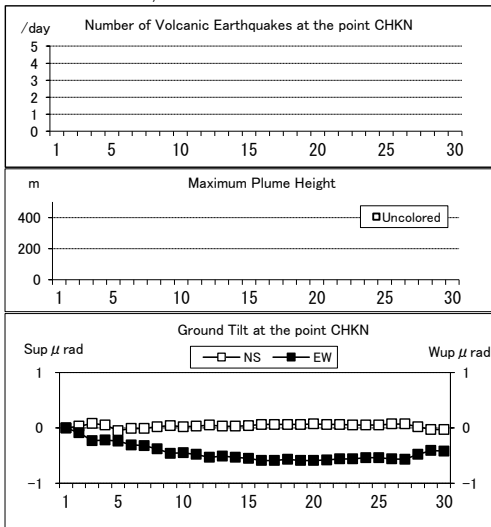
噴煙の色(Color of plumes)	-
他の火山現象(Other volcanic phenomena)	-

Note: Plumes were from Shin Summit(Location Y)

Note: Uncolored:Plume color was White(W).

Colored:Plume color was Light white(LW), Grayish white(GW), Gray(G) and other.

Chokaisan: June,2015



(15)栗駒山

震動観測(Seismic Observation)

	月計 total	最大(起日) max (date)
火山性地震回数(Number of volcanic earthquakes)	-	-
火山性微動回数(Number of volcanic tremors)	-	-
微動継続時間(Duration of volcanic tremors) (min.)	-	-

Note: KRK2 (N38°56.45' E140°49.08' H840m)

遠望観測(Visual Observation)

	最大(起日) max (date)
噴煙量(Quantity of plumes) (JMA's scale)	-
噴煙の高さ(Height of plumes) (m)	-

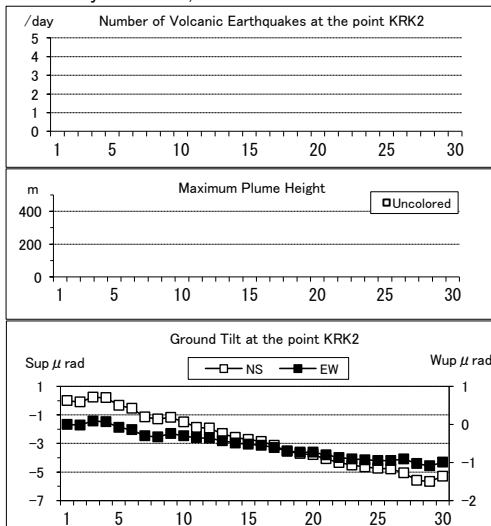
噴煙の色(Color of plumes)	-
他の火山現象(Other volcanic phenomena)	-

Note: Plumes were from Showa Lake(Location Z-1),Old Crater (W-1)

Note: Uncolored:Plume color was White(W).

Colored:Plume color was Light white(LW), Grayish white(GW), Gray(G) and other.

Kurikomayama: June,2015



(16)蔵王山

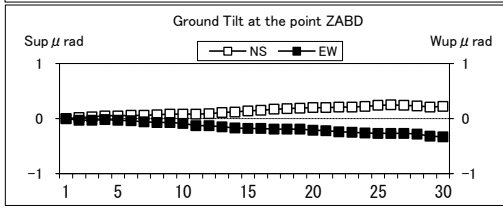
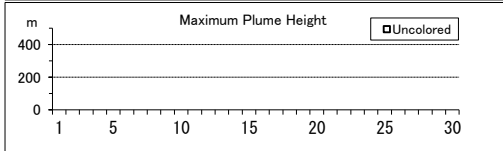
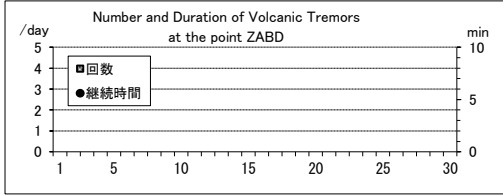
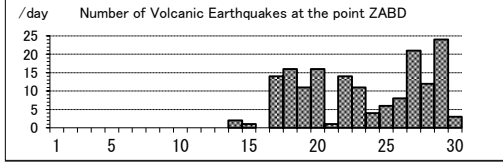
震動観測(Seismic Observation)		
Observation Point: ZABD	月計 total	最大(起日) max (date)
火山性地震回数(Number of volcanic earthquakes)	164	24 (29)
火山性微動回数(Number of volcanic tremors)	-	-
微動継続時間(Duration of volcanic tremors) (min.)	-	-

Note: ZABD (N38°07.33' E140°23.69' H1012m)

遠望観測(Visual Observation)		最大(起日) max (date)
噴煙量(Quantity of plumes) (JMA's scale)	-	-
噴煙の高さ(Height of plumes) (m)	-	-
噴煙の色(Color of plumes)	-	-
他の火山現象(Other volcanic phenomena)	-	-

Note: Plumes were from Okama(Location S-1b),Maruyamasawa(Y-2a)
 Note: Uncolored:Plume color was White(W).
 Colored:Plume color was Light white(LW), Grayish white(GW), Gray(G) and other.

Zaozan: June,2015



(17)吾妻山

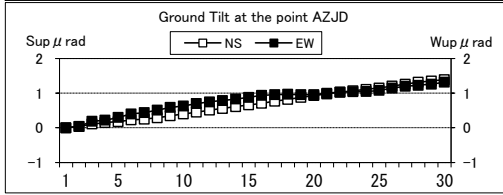
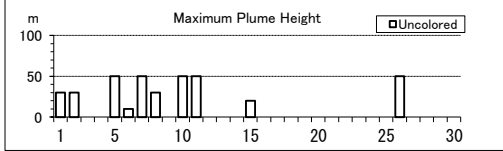
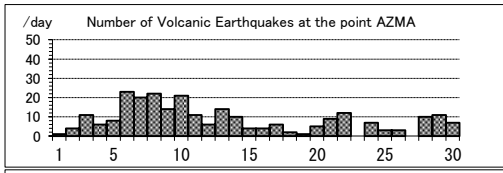
震動観測(Seismic Observation)		
Observation Point: AZMA	月計 total	最大(起日) max (date)
火山性地震回数(Number of volcanic earthquakes)	255	23 (6)
火山性微動回数(Number of volcanic tremors)	-	-
微動継続時間(Duration of volcanic tremors) (min.)	-	-

Note: AZMA (N37°43.34' E140°16.53' H1295m)

遠望観測(Visual Observation)		最大(起日) max (date)
噴煙量(Quantity of plumes) (JMA's scale)	-	1 (abbr.)
噴煙の高さ(Height of plumes) (m)	-	50 (abbr.)
噴煙の色(Color of plumes)	-	W
他の火山現象(Other volcanic phenomena)	-	-

Note: Plumes were from the Oana Crater
 Note: Uncolored:Plume color was White(W).
 Colored:Plume color was Light white(LW), Grayish white(GW), Gray(G) and other.

Azumayama: June,2015



(18)安達太良山

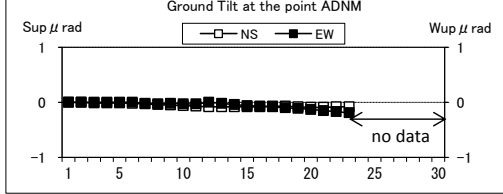
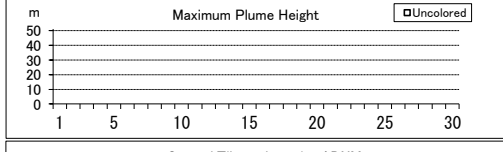
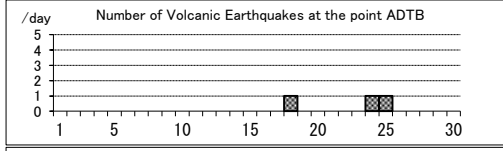
震動観測(Seismic Observation)		
Observation Point: ADTB	月計 total	最大(起日) max (date)
火山性地震回数(Number of volcanic earthquakes)	3	1 (18.24.25)
火山性微動回数(Number of volcanic tremors)	-	-
微動継続時間(Duration of volcanic tremors) (min.)	-	-

Note: ADTB(N37°38.05' E140°18.21' H1320m)

遠望観測(Visual Observation)		最大(起日) max (date)
噴煙量(Quantity of plumes) (JMA's scale)	-	-
噴煙の高さ(Height of plumes) (m)	-	-
噴煙の色(Color of plumes)	-	-
他の火山現象(Other volcanic phenomena)	-	-

Note: Plumes were from the Numanodaira - SW area.
 Note: Uncolored:Plume color was White(W).
 Colored:Plume color was Light white(LW), Grayish white(GW), Gray(G)

Adatarayama: June,2015



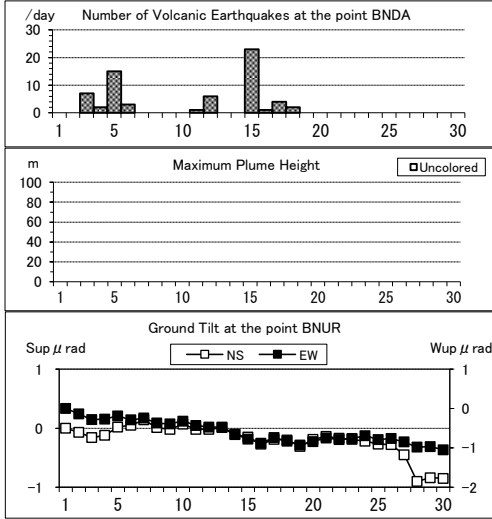
(19)磐梯山

震動観測(Seismic Observation)		
Observation Point: BNDA		
火山性地震回数(Number of volcanic earthquakes)	月計 total 64	最大(起日) max (date) 23 (15)
火山性微動回数(Number of volcanic tremors)	-	-
微動継続時間(Duration of volcanic tremors) (min.)	-	-
Note: BNDA(N37°35.04' E140°04.79' H1000m)		

遠望観測(Visual Observation)		最大(起日) max (date)
噴煙量(Quantity of plumes) (JMA's scale)	-	-
噴煙の高さ(Height of plumes) (m)	-	-
噴煙の色(Color of plumes)		
-		
他の火山現象(Other volcanic phenomena)		
-		

Note: Plumes were from the Fumarolic area in Crater wall.
 Note: Uncolored:Plume color was White(W).
 Colored:Plume color was Light white(LW), Grayish white(GW), Gray(G) and other.

Bandaisan: June,2015



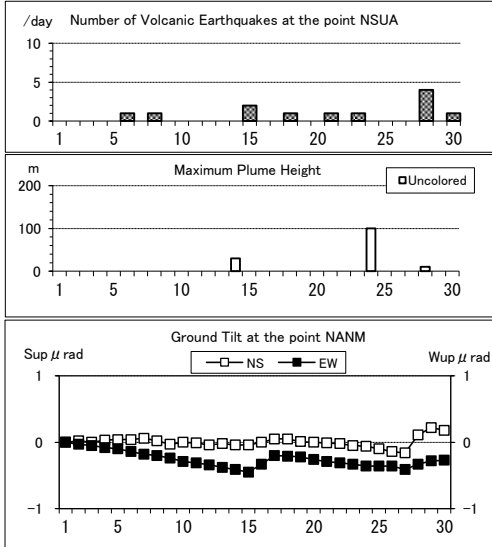
(20)那須岳

震動観測(Seismic Observation)		
Observation Point: NSUA		
火山性地震回数(Number of volcanic earthquakes)	月計 total 12	最大(起日) max (date) 4 (28)
火山性微動回数(Number of volcanic tremors)	-	-
微動継続時間(Duration of volcanic tremors) (min.)	-	-
Note: NSUA (N37°06.38' E139°59.44' H1083m)		

遠望観測(Visual Observation)		最大(起日) max (date)
噴煙量(Quantity of plumes) (JMA's scale)	1	(14,24,28)
噴煙の高さ(Height of plumes) (m)	100	(24)
噴煙の色(Color of plumes)		
W		
他の火山現象(Other volcanic phenomena)		
-		

Note: Plumes were from the west flank of Mt. Nasudake.
 Note: Uncolored:Plume color was White(W).
 Colored:Plume color was Light white(LW), Grayish white(GW), Gray(G) and other.

Nasudake: June,2015



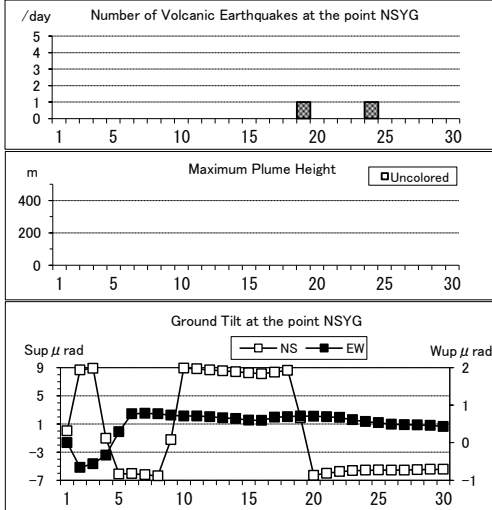
(21)日光白根山

震動観測(Seismic Observation)		
Observation Point: NSYG		
火山性地震回数(Number of volcanic earthquakes)	月計 total 2	最大(起日) max (date) 1 (19,24)
火山性微動回数(Number of volcanic tremors)	-	-
微動継続時間(Duration of volcanic tremors) (min.)	-	-
Note: NSYG (N36°48.22' E139°24.46' H1642m)		

遠望観測(Visual Observation)		最大(起日) max (date)
噴煙量(Quantity of plumes) (JMA's scale)	-	-
噴煙の高さ(Height of plumes) (m)	-	-
噴煙の色(Color of plumes)		
-		
他の火山現象(Other volcanic phenomena)		
-		

Note: Plumes were from Summit Area of Nikko-Shiranesan(Location A)
 Note: Uncolored:Plume color was White(W).
 Colored:Plume color was Light white(LW), Grayish white(GW), Gray(G) and other.

Nikko-Shiranesan: June,2015



(22)草津白根山

震動観測(Seismic Observation)

Observation Point: KSHA	月計	最大(起日)
	total	max (date)
火山性地震回数(Number of volcanic earthquakes)	46	5 (24)
火山性微動回数(Number of volcanic tremors)	1	1 (28)
微動継続時間(Duration of volcanic tremors) (min.)	2	2 (28)

Note: KSHA (N36°38.88' E138°32.73' H1933m)

遠望観測(Visual Observation)

遠望観測(Visual Observation)	最大(起日) max (date)
	噴煙量(Quantity of plumes) (JMA's scale)
噴煙の高さ(Height of plumes) (m)	60 (14)

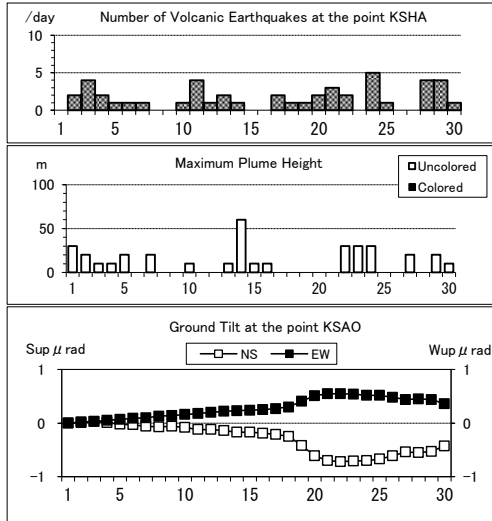
噴煙の色(Color of plumes)	W
他の火山現象(Other volcanic phenomena)	-

Note: Plumes were from the Yugama Crater and Fumaroles at northern side of Yugama Crater

Note: Uncolored:Plume color was White(W).

Colored:Plume color was Light white(LW), Grayish white(GW), Gray(G) and other.

Kusatsu-Shiranesan: June,2015



(23)浅間山

震動観測(Seismic Observation)

Observation Point: ASMB	月計	最大(起日)
	total	max (date)
火山性地震回数(Number of volcanic earthquakes)	2734	206 (20)
火山性微動回数(Number of volcanic tremors)	47	8 (20)
微動継続時間(Duration of volcanic tremors) (min.)	108	45 (20)

Note: ASMB (N36°23.37' E138°31.13' H1864m)

遠望観測(Visual Observation)

遠望観測(Visual Observation)	最大(起日) max (date)
	噴煙量(Quantity of plumes) (JMA's scale)
噴煙の高さ(Height of plumes) (m)	1200 (20,21,23)

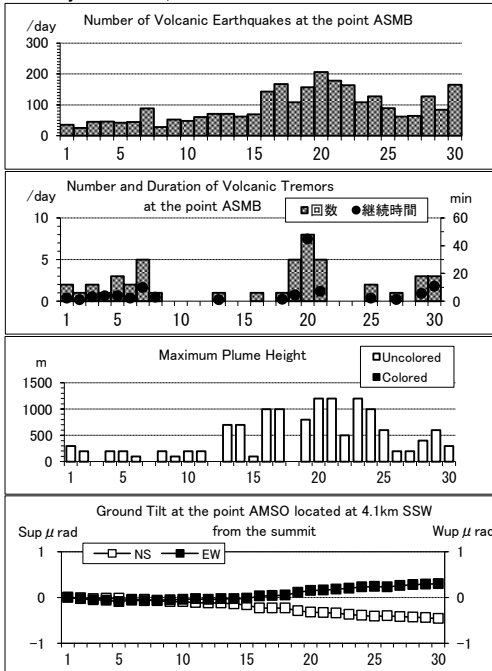
噴煙の色(Color of plumes)	W
他の火山現象(Other volcanic phenomena)	G1

Note: Plumes were from the Kamayama Crater(Location A).

Note: Uncolored:Plume color was White(W).

Colored:Plume color was Light white(LW), Grayish white(GW), Gray(G) and other.

Asamayama: June,2015



(24)新潟焼山

震動観測(Seismic Observation)

Observation Point: NYK2	月計	最大(起日)
	total	max (date)
火山性地震回数(Number of volcanic earthquakes)	3	1 (7.21.23)
火山性微動回数(Number of volcanic tremors)	-	-
微動継続時間(Duration of volcanic tremors) (min.)	-	-

Note: NYK2 (N36°57.35' E138°02.29' H1147m)

遠望観測(Visual Observation)

噴煙量(Quantity of plumes) (JMA's scale)	最大(起日) max (date)
	1 (abbr.)
噴煙の高さ(Height of plumes) (m)	20 (7)

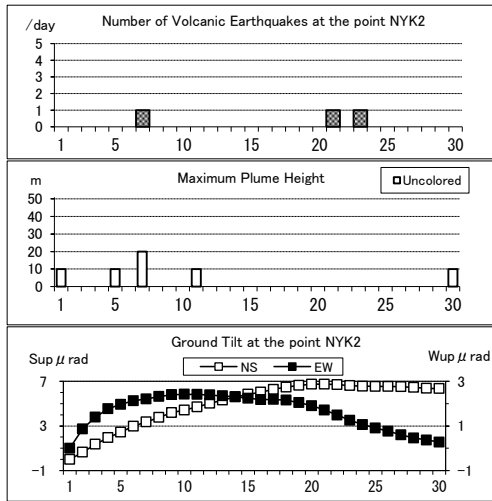
噴煙の色(Color of plumes)	W
他の火山現象(Other volcanic phenomena)	-

Note: Plumes were from Upper East flank(Location A).

Note: Uncolored:Plume color was White(W).

Colored:Plume color was Light white(LW), Grayish white(GW), Gray(G) and other.

Niigata-Yakeyama: June,2015



(25)焼岳

震動観測(Seismic Observation)

Observation Point: YKN2	月計	最大(起日)
	total	max (date)
火山性地震回数(Number of volcanic earthquakes)	8	2 (1)
火山性微動回数(Number of volcanic tremors)	-	-
微動継続時間(Duration of volcanic tremors) (min.)	-	-

Note: YKN2 (N36°15.67' E137°34.45' H1151m)

遠望観測(Visual Observation)

噴煙量(Quantity of plumes) (JMA's scale)	最大(起日) max (date)
	1 (abbr.)
噴煙の高さ(Height of plumes) (m)	60 (1,11,23)

噴煙の色(Color of plumes)	W
他の火山現象(Other volcanic phenomena)	-

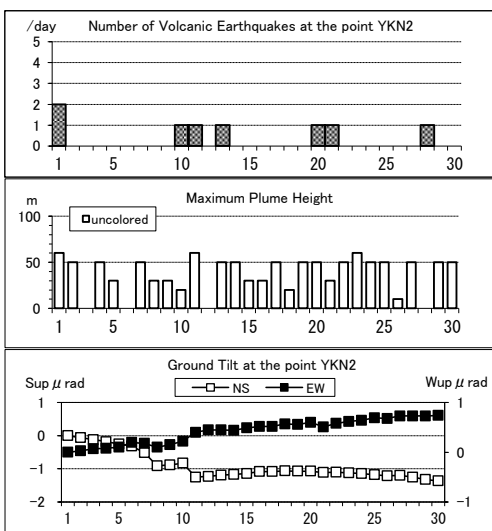
Note: Plumes were from the North peak (Location A)

and the upper Iwatsubodani (Location B).

Note: Uncolored:Plume color was White(W).

Colored:Plume color was Light white(LW), Grayish white(GW), Gray(G) and other.

Yakedake June,2015



(26)乗鞍岳

震動観測(Seismic Observation)

Observation Point: NOSM	月計	最大(起日)
	total	max (date)
火山性地震回数(Number of volcanic earthquakes)	26	4 (13,19)
火山性微動回数(Number of volcanic tremors)	-	-
微動継続時間(Duration of volcanic tremors) (min.)	-	-

Note: NOSM (N36°06.85' E137°35.81' H1804m)

遠望観測(Visual Observation)

噴煙量(Quantity of plumes) (JMA's scale)	最大(起日) max (date)
	-
噴煙の高さ(Height of plumes) (m)	-

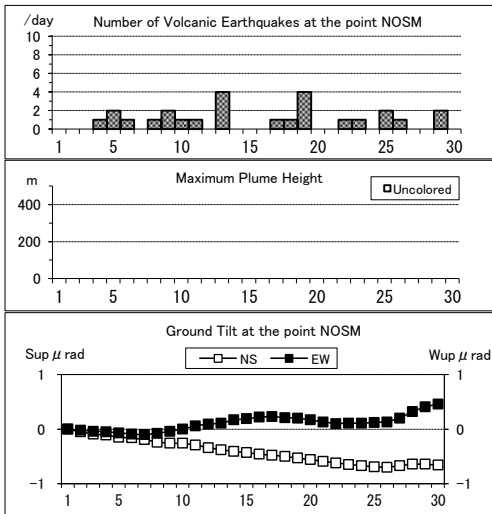
噴煙の色(Color of plumes)	-
他の火山現象(Other volcanic phenomena)	-

Note: Plumes were from Summit Crater(Location A).

Note: Uncolored:Plume color was White(W).

Colored:Plume color was Light white(LW), Grayish white(GW), Gray(G) and other.

Norikuradake: June,2015



(27)御嶽山

震動観測(Seismic Observation)

Observation Point: ONTA

	月計 total	最大(起日) max (date)
火山性地震回数(Number of volcanic earthquakes)	105	11 (1)
火山性微動回数(Number of volcanic tremors)	-	-
微動継続時間(Duration of volcanic tremors) (min.)	-	-

Note: ONTA (N35°52.61' E137°29.73' H2228m)

遠望観測(Visual Observation)

	最大(起日) max (date)
噴煙量(Quantity of plumes) (JMA's scale)	3 (14,22,24)
噴煙の高さ(Height of plumes) (m)	1000 (14,24)

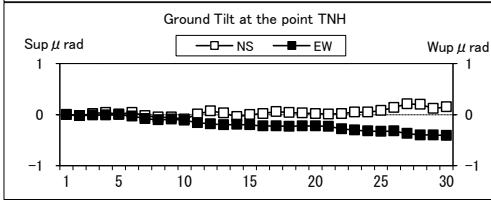
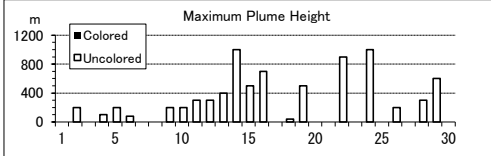
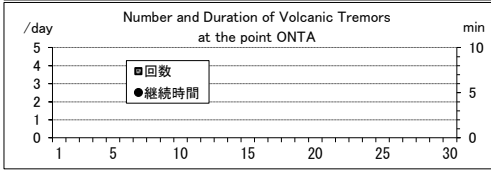
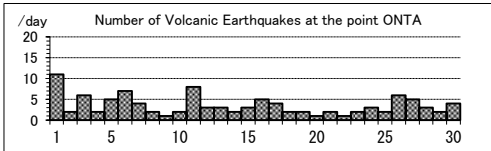
噴煙の色(Color of plumes)	W
他の火山現象(Other volcanic phenomena)	-

Note: Plumes were from the Otaki summit Crater (A) and/or S6

Note: Uncolored:Plume color was White(W).

Colored:Plume color was Light white(LW), Grayish white(GW), Gray(G) and other.

Ontakesan: June,2015



(28)白山

震動観測(Seismic Observation)

Observation Point: HSMD

	月計 total	最大(起日) max (date)
火山性地震回数(Number of volcanic earthquakes)	25	9 (22)
火山性微動回数(Number of volcanic tremors)	-	-
微動継続時間(Duration of volcanic tremors) (min.)	-	-

Note: HSMD (N36°08.78' E136°45.86' H2345m)

遠望観測(Visual Observation)

	最大(起日) max (date)
噴煙量(Quantity of plumes) (JMA's scale)	-
噴煙の高さ(Height of plumes) (m)	-

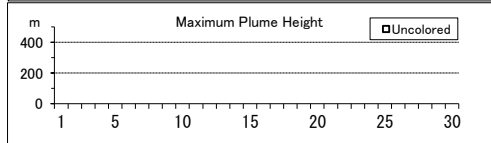
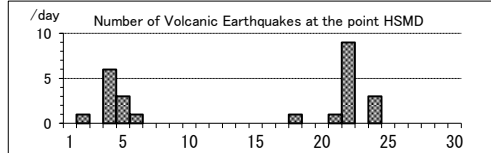
噴煙の色(Color of plumes)	-
他の火山現象(Other volcanic phenomena)	-

Note: Plumes were from Summit Area of Hakusan(Location A)

Note: Uncolored:Plume color was White(W).

Colored:Plume color was Light white(LW), Grayish white(GW), Gray(G) and other.

Hakusan: June,2015



(29)富士山

震動観測(Seismic Observation)

Observation Point: N.FJ5V(NIED)

	月計 total	最大(起日) max (date)
火山性地震回数(Number of volcanic earthquakes)	14	5 (3)
火山性微動回数(Number of volcanic tremors)	-	-
微動継続時間(Duration of volcanic tremors) (min.)	-	-

Note: N.FJ5V(NIED) (N35°23.08' E138°41.72' H2090m)

遠望観測(Visual Observation)

	最大(起日) max (date)
噴煙量(Quantity of plumes) (JMA's scale)	-
噴煙の高さ(Height of plumes) (m)	-

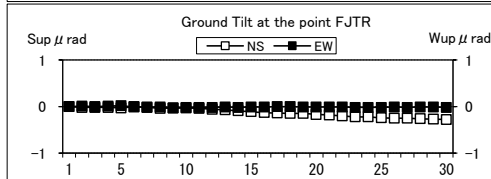
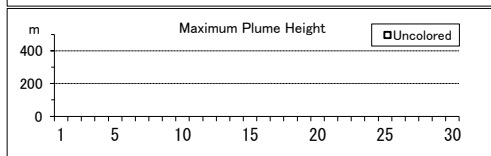
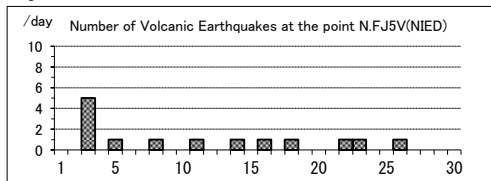
噴煙の色(Color of plumes)	-
他の火山現象(Other volcanic phenomena)	-

Note: Plumes were from Summit Crater(LocationA),Hoei Crater(B)

Note: Uncolored:Plume color was White(W).

Colored:Plume color was Light white(LW), Grayish white(GW), Gray(G) and other.

Fujisan: June,2015



(30)箱根山

震動観測(Seismic Observation)		
Observation Point: OK.KOM	月計 total	最大(起日) max (date)
火山性地震回数(Number of volcanic earthquakes)	1075	603 (30)
火山性微動回数(Number of volcanic tremors)	1	1 (29)
微動継続時間(Duration of volcanic tremors) (min.)	5	5 (29)

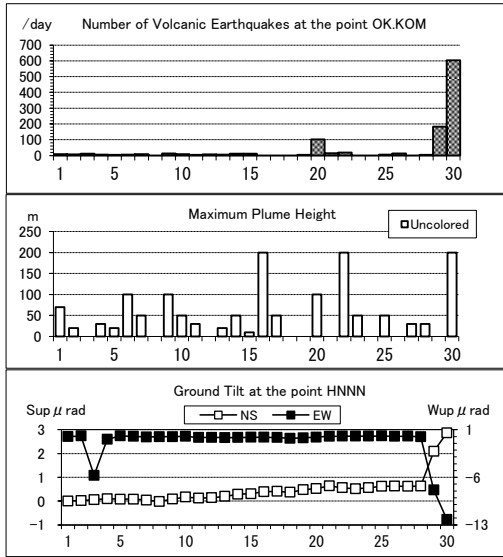
Note: OK.KOM(N35°13.2' E139°02.0' H1049m)

遠望観測(Visual Observation)		最大(起日) max (date)
噴煙量(Quantity of plumes) (JMA's scale)	1 (abbr.)	
噴煙の高さ(Height of plumes) (m)	200 (16,22,30)	

噴煙の色(Color of plumes)	W
他の火山現象(Other volcanic phenomena)	-

Note: Plumes were from Fumaroles near Owakudani(Location A), Fumaroles near Sounjigoku(B)
 Note: Uncolored:Plume color was White(W).
 Colored:Plume color was Light white(LW), Grayish white(GW), Gray(G) and other.

Hakoneyama: June,2015



(31)伊豆東部火山群

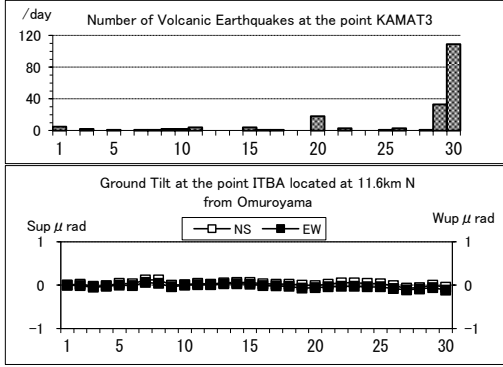
震動観測(Seismic Observation)		
Observation Point: ITBA.KAMAT3	月計 total	最大(起日) max (date)
火山性地震回数(Number of volcanic earthquakes)	192	109 (30)
火山性微動回数(Number of volcanic tremors)	-	-
微動継続時間(Duration of volcanic tremors) (min.)	-	-

Note: ITBA (N35°00.46' E139°05.87' H12m)
 KAMAT3(N34°55.71' E139°03.65' H175m)

遠望観測(Visual Observation)		最大(起日) max (date)
噴煙量(Quantity of plumes) (JMA's scale)	-	
噴煙の高さ(Height of plumes) (m)	-	

噴煙の色(Color of plumes)	-
他の火山現象(Other volcanic phenomena)	-

Izu-Tobu Volcanoes: June,2015



(32)伊豆大島

震動観測(Seismic Observation)		
Observation Point: OSMA	月計 total	最大(起日) max (date)
火山性地震回数(Number of volcanic earthquakes)	24	3 (10,27)
火山性微動回数(Number of volcanic tremors)	-	-
微動継続時間(Duration of volcanic tremors) (min.)	-	-

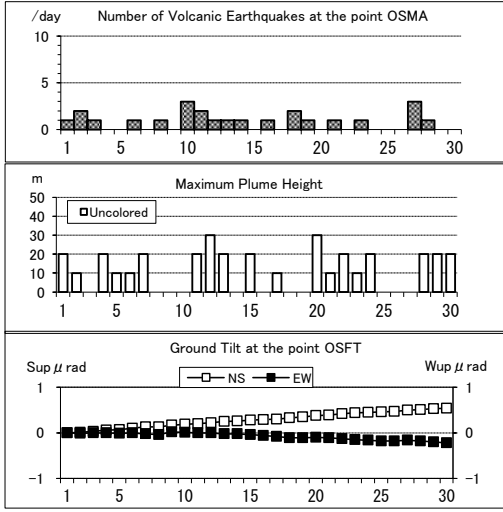
Note: OSMA (N34°44.16' E139°23.21' H553m)

遠望観測(Visual Observation)		最大(起日) max (date)
噴煙量(Quantity of plumes) (JMA's scale)	1 (abbr.)	
噴煙の高さ(Height of plumes) (m)	30 (12,20)	

噴煙の色(Color of plumes)	W
他の火山現象(Other volcanic phenomena)	-

Note:Plumes were from the Miharayama Summit Crater(Location A), the Fumaroles at western side of Miharashinzan(A1), the Fumaroles near Kengamine(A2), the Fumaroles at eastern side of Miharashinzan(A3)
 Note: Uncolored:Plume color was White(W).
 Colored:Plume color was Light white(LW), Grayish white(GW), Gray(G) and other.

Izu-Oshima: June,2015



(33)新島

震動観測(Seismic Observation)	月計 total	最大(起日) max (date)
Observation Point: NIST		
火山性地震回数(Number of volcanic earthquakes)	1	1 (11)
火山性微動回数(Number of volcanic tremors)	-	-
微動継続時間(Duration of volcanic tremors) (min.)	-	-

Note: NIST (N34 21.76' E139 14.92' H41m)

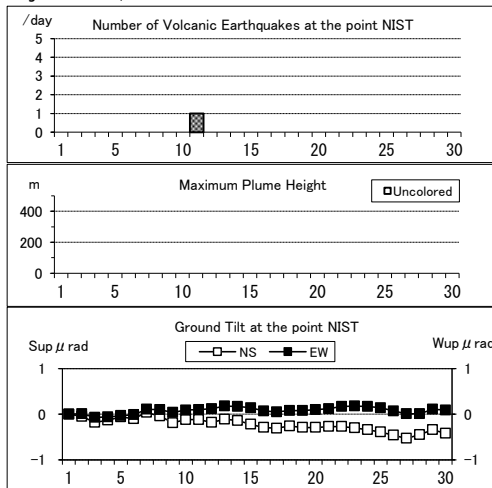
遠望観測(Visual Observation)	最大(起日) max (date)
噴煙量(Quantity of plumes) (JMA's scale)	-
噴煙の高さ(Height of plumes) (m)	-
噴煙の色(Color of plumes)	-
他の火山現象(Other volcanic phenomena)	-

Note: Plumes were from Summit Area of Tangoyama(Location A)

Note: Uncolored:Plume color was White(W).

Colored:Plume color was Light white(LW), Grayish white(GW), Gray(G) and other.

Nijima: June,2015



(34)神津島

震動観測(Seismic Observation)	月計 total	最大(起日) max (date)
Observation Point: KOTJ		
火山性地震回数(Number of volcanic earthquakes)	9	9 (10)
火山性微動回数(Number of volcanic tremors)	-	-
微動継続時間(Duration of volcanic tremors) (min.)	-	-

Note: KOTJ (N34 13.24' E139 08.91' H372m)

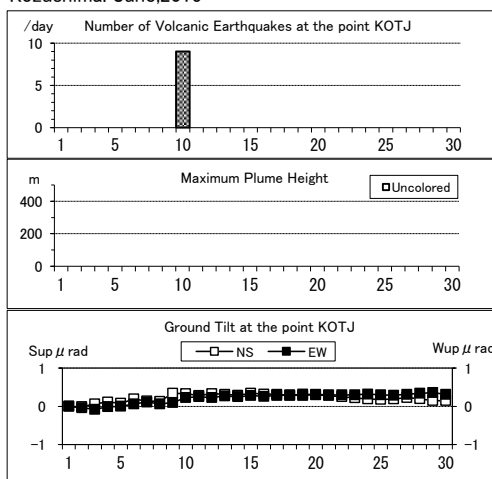
遠望観測(Visual Observation)	最大(起日) max (date)
噴煙量(Quantity of plumes) (JMA's scale)	-
噴煙の高さ(Height of plumes) (m)	-
噴煙の色(Color of plumes)	-
他の火山現象(Other volcanic phenomena)	-

Note: Plumes were from Summit Area of Tenjosan(Location A)

Note: Uncolored:Plume color was White(W).

Colored:Plume color was Light white(LW), Grayish white(GW), Gray(G) and other.

Kozushima: June,2015



(35)三宅島

震動観測(Seismic Observation)	月計 total	最大(起日) max (date)
Observation Point: MJON		
火山性地震回数(Number of volcanic earthquakes)	135	14 (28)
火山性微動回数(Number of volcanic tremors)	-	-
微動継続時間(Duration of volcanic tremors) (min.)	-	-

Note: MJON (N34 04.38' E139 30.86' H472m)

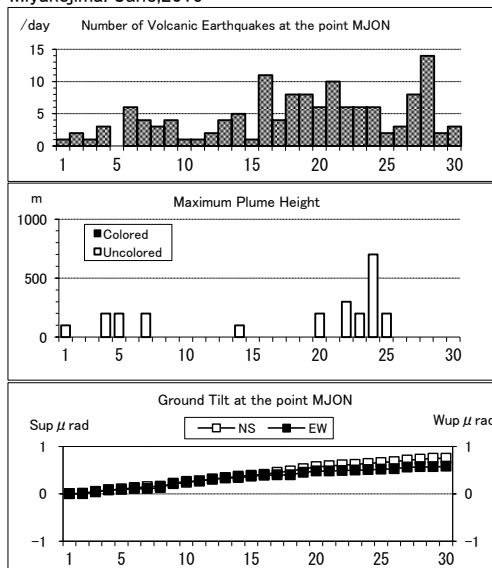
遠望観測(Visual Observation)	最大(起日) max (date)
噴煙量(Quantity of plumes) (JMA's scale)	2 (22,24)
噴煙の高さ(Height of plumes) (m)	700 (24)
噴煙の色(Color of plumes)	W
他の火山現象(Other volcanic phenomena)	-

Note: Plumes were from the Summit Crater.

Note: Uncolored:Plume color was White(W).

Colored:Plume color was Light white(LW), Grayish white(GW), Gray(G) and other.

Miyakejima: June,2015



(36)八丈島

震動観測(Seismic Observation)

Observation Point: HACHJ3

	月計 total	最大(起日) max (date)
火山性地震回数(Number of volcanic earthquakes)	-	-
火山性微動回数(Number of volcanic tremors)	-	-
微動継続時間(Duration of volcanic tremors) (min.)	-	-

Note: HACHJ3 (N33 06.92 E139 48.83 H70m)

遠望観測(Visual Observation)

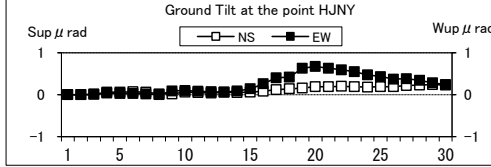
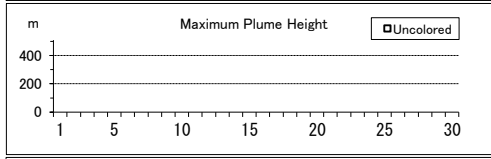
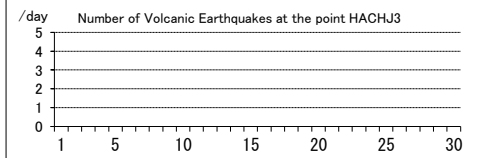
	最大(起日) max (date)
噴煙量(Quantity of plumes) (JMA's scale)	-
噴煙の高さ(Height of plumes) (m)	-
噴煙の色(Color of plumes)	-
他の火山現象(Other volcanic phenomena)	-

Note: Plumes were from Nishiyama Crater(Location A)

Note: Uncolored:Plume color was White(W).

Colored:Plume color was Light white(LW), Grayish white(GW), Gray(G) and other.

Hachijojima: June,2015



(37)青ヶ島

震動観測(Seismic Observation)

Observation Point: AOMT

	月計 total	最大(起日) max (date)
火山性地震回数(Number of volcanic earthquakes)	1	1 (20)
火山性微動回数(Number of volcanic tremors)	-	-
微動継続時間(Duration of volcanic tremors) (min.)	-	-

Note: AOMT (N32'28.02' E139'45.64' H273m)

遠望観測(Visual Observation)

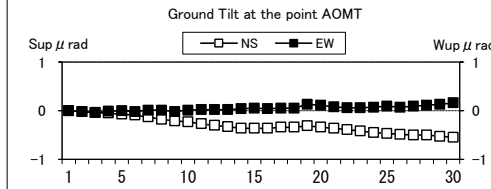
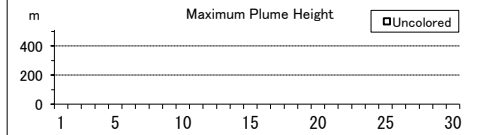
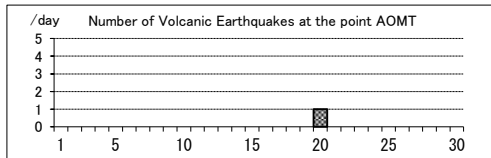
	最大(起日) max (date)
噴煙量(Quantity of plumes) (JMA's scale)	-
噴煙の高さ(Height of plumes) (m)	-
噴煙の色(Color of plumes)	-
他の火山現象(Other volcanic phenomena)	-

Note: Plumes were from Western flank of Maruyama(Location A)

Note: Uncolored:Plume color was White(W).

Colored:Plume color was Light white(LW), Grayish white(GW), Gray(G) and other.

Aogashima: June,2015



(38)硫黄島

震動観測(Seismic Observation)

Observation Point: IOCD

	月計 total	最大(起日) max (date)
火山性地震回数(Number of volcanic earthquakes)	178	20 (9)
火山性微動回数(Number of volcanic tremors)	4	3 (1)
微動継続時間(Duration of volcanic tremors) (min.)	5	4 (1)

Note: IOCD (N24 46.12' E141'18.43' H72m)

遠望観測(Visual Observation)

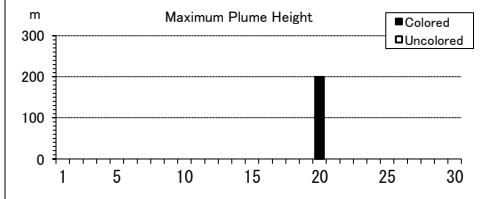
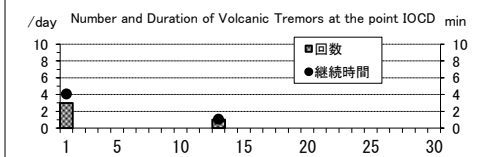
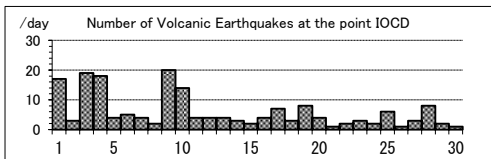
	最大(起日) max (date)
噴煙量(Quantity of plumes) (JMA's scale)	1 (20)
噴煙の高さ(Height of plumes) (m)	200 (20)
噴煙の色(Color of plumes)	GW
他の火山現象(Other volcanic phenomena)	-

Note: Plumes were from Asodaikanbetsuko (Location A)and/or Idogahama (Location B)

Note: Uncolored:Plume color was White(W).

Colored:Plume color was Light white(LW), Grayish white(GW), Gray(G) and other.

Ioto: June,2015



(39) 鶴見岳・伽藍岳

震動観測(Seismic Observation)

Observation Point: TGBP

	月計 total	最大(起日) max (date)
火山性地震回数(Number of volcanic earthquakes)	-	-
火山性微動回数(Number of volcanic tremors)	-	-
微動継続時間(Duration of volcanic tremors) (min.)	-	-

Note: TGBP (N33°19.53' E131°27.07' H401m)

遠望観測(Visual Observation)

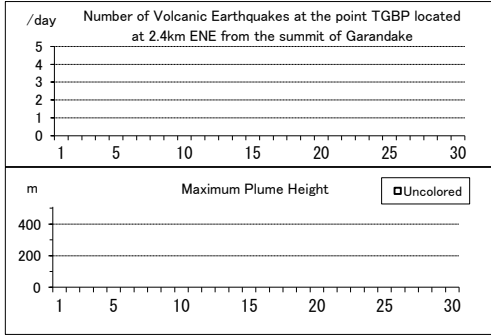
	最大(起日) max (date)
噴煙量(Quantity of plumes) (JMA's scale)	-
噴煙の高さ(Height of plumes) (m)	-
噴煙の色(Color of plumes)	-
他の火山現象(Other volcanic phenomena)	-

Note: Plumes were from RegionA and/or RegionB.

Note: Uncolored:Plume color was White(W).

Colored:Plume color was Light white(LW), Grayish white(GW), Gray(G) and other.

Tsurumidake and Garandake: June,2015



(40) 九重山

震動観測(Seismic Observation)

Observation Point: KJA2

	月計 total	最大(起日) max (date)
火山性地震回数(Number of volcanic earthquakes)	4	1 (abbr.)
火山性微動回数(Number of volcanic tremors)	-	-
微動継続時間(Duration of volcanic tremors) (min.)	-	-

Note: KJA2 (N33°06.20' E131°13.78' H1282m)

遠望観測(Visual Observation)

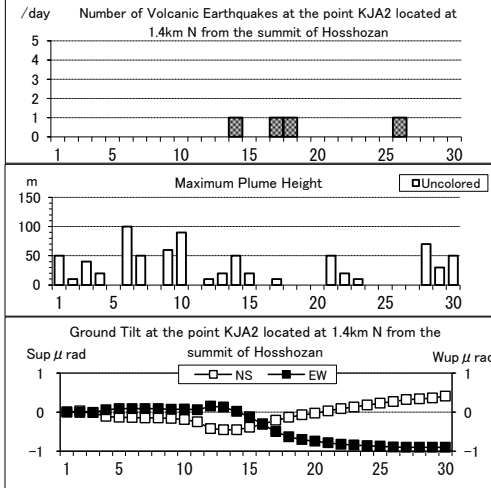
	最大(起日) max (date)
噴煙量(Quantity of plumes) (JMA's scale)	1 (abbr.)
噴煙の高さ(Height of plumes) (m)	100 (6)
噴煙の色(Color of plumes)	W
他の火山現象(Other volcanic phenomena)	-

Note: Plumes were from the east and/or north-east flank of Mt. Hossho (Location A,B,C or D).

Note: Uncolored:Plume color was White(W).

Colored:Plume color was Light white(LW), Grayish white(GW), Gray(G) and other.

Kujusan: June,2015



(41)阿蘇山

震動観測(Seismic Observation)

Observation Point: ASOA

	月計 total	最大(起日) max (date)
火山性地震回数(Number of volcanic earthquakes)	243	73 (2)
孤立型火山性微動回数 (Number of isolated volcanic tremors)	2269	336 (15)

Note: ASOA (N32°53.15' E131°04.57' H1152m)

遠望観測(Visual Observation)

	最大(起日) max (date)
噴煙量(Quantity of plumes) (JMA's scale)	2 (abbr.)
噴煙の高さ(Height of plumes) (m)	800 (28)

噴煙の色(Color of plumes)	W,LW
他の火山現象(Other volcanic phenomena)	Bm

Note: Plumes were from the Crater No.1 of Mt. Nakadake.

Note: Uncolored:Plume color was White(W).

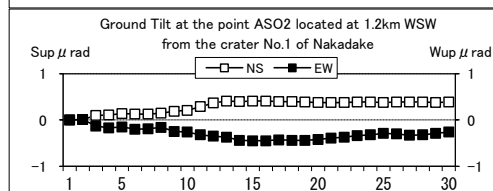
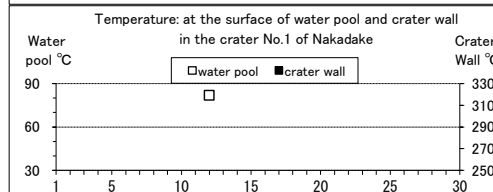
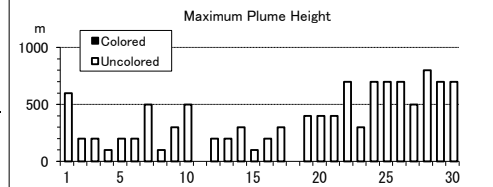
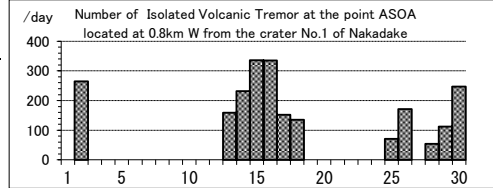
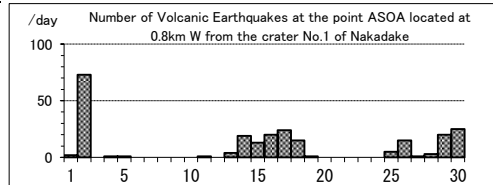
Colored:Plume color was Light white(LW), Grayish white(GW), Gray(G) and other.

現地観測(Field Observation)

	最高(起日) max (date)	最低(起日) min (date)
火口内の湯だまりの表面温度 (Surface temperature on the water pool in the crater) (°C)	82 (12)	82 (12)
火口壁の表面温度 (Surface temperature on the crater wall) (°C)	-	-

Observation Point: the Crater No.1 of Mt. Nakadake

Asosan: June,2015



(42)雲仙岳

震動観測(Seismic Observation)

Observation Point: UNKN

	月計 total	最大(起日) max (date)
火山性地震回数(Number of volcanic earthquakes)	25	3 (19)
火山性微動回数(Number of volcanic tremors)	-	-
微動継続時間(Duration of volcanic tremors) (min)	-	-

Note: UNKN (N32°46.31' E130°17.31' H833m)

遠望観測(Visual Observation)

	最大(起日) max (date)
噴煙量(Quantity of plumes) (JMA's scale)	-
噴煙の高さ(Height of plumes) (m)	-

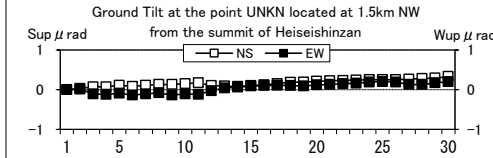
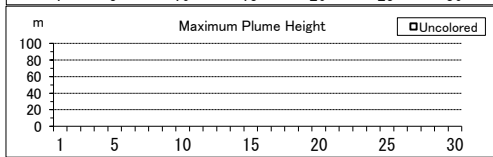
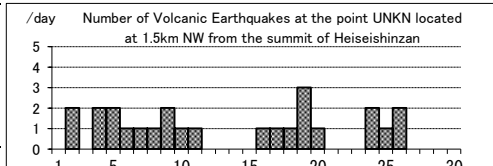
噴煙の色(Color of plumes)	-
他の火山現象(Other volcanic phenomena)	-

Note: Plumes were from the 10th Lava Dome(Location A10) and/or the 11th Lava Dome(A11).

Note: Uncolored:Plume color was White(W).

Colored:Plume color was Light white(LW), Grayish white(GW), Gray(G) and other.

Unzendake: June,2015



(43)霧島山

新燃岳 (Shinmoedake)

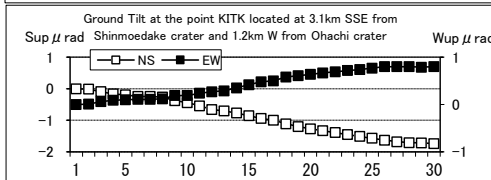
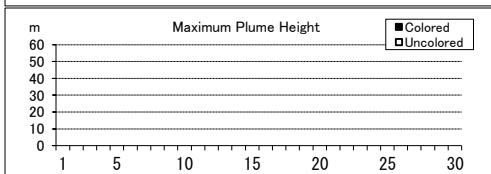
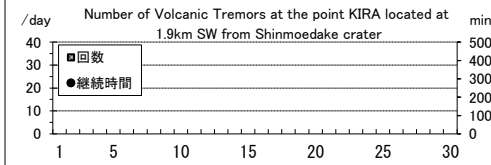
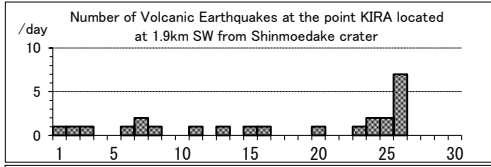
震動観測(Seismic Observation)		月計	最大(起日)
Observation Point: KIRA		total	max (date)
火山性地震回数(Number of volcanic earthquakes)		24	7 (26)
火山性微動回数(Number of volcanic tremors)		-	-
微動継続時間(Duration of volcanic tremors) (min)		-	-

Note: KIRA (N31°53.89' E130°52.20' H1036m)

遠望観測(Visual Observation)		最大(起日) max (date)
噴煙量(Quantity of plumes) (JMA's scale)		-
噴煙の高さ(Height of plumes) (m)		-
噴煙の色(Color of plumes)		-
他の火山現象(Other volcanic phenomena)		-

Note: Plumes were from the Shinmoedake Crater
 Note: Uncolored:Plume color was White(W).
 Colored:Plume color was Light white(LW), Grayish white(GW), Gray(G) and other.

Kirishimayama: June,2015



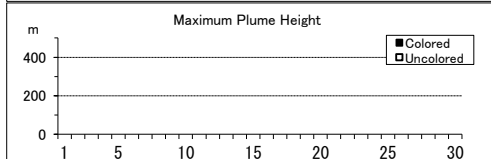
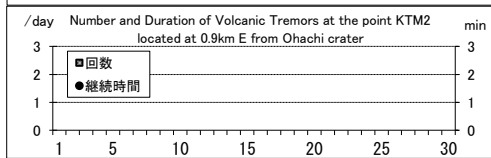
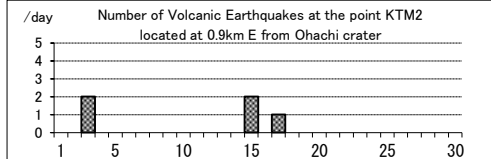
御鉢(Ohachi)

震動観測(Seismic Observation)		月計	最大(起日)
Observation Point: KTM2		total	max (date)
火山性地震回数(Number of volcanic earthquakes)		5	2 (3,15)
火山性微動回数(Number of volcanic tremors)		-	-
微動継続時間(Duration of volcanic tremors) (min)		-	-

Note: KTM2 (N31°53.13' E130°55.19' H1544m)

遠望観測(Visual Observation)		最大(起日) max (date)
噴煙量(Quantity of plumes) (JMA's scale)		-
噴煙の高さ(Height of plumes) (m)		-
噴煙の色(Color of plumes)		-
他の火山現象(Other volcanic phenomena)		-

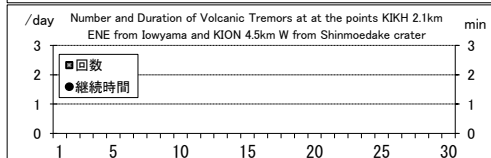
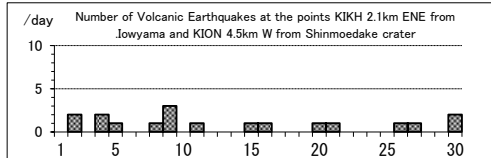
Note: Plumes were from the Ohachi Crater
 Note: Uncolored:Plume color was White(W).
 Colored:Plume color was Light white(LW), Grayish white(GW), Gray(G) and other.



えびの高原(硫黄山)周辺(Ebino Highland Ioyama)

震動観測(Seismic Observation)		月計	最大(起日)
Observation Point: KIKH, KION		total	max (date)
火山性地震回数(Number of volcanic earthquakes)		18	3 (9)
火山性微動回数(Number of volcanic tremors)		-	-
微動継続時間(Duration of volcanic tremors) (min)		-	-

Note: KIKH(N31°57.20' E130°52.52' H969m)
 KION(N31°54.68' E130°50.11' H982m)



(44)桜島

震動観測(Seismic Observation)

Observation Point: SKRB	月計 total	最大(起日) max (date)
火山性地震回数(Number of volcanic earthquakes)	1633	206 (23)
火山性微動回数(Number of volcanic tremors)	508	59 (25)
微動継続時間(Duration of volcanic tremors) (min)	14839	1440 (2,5)

Note: SKRB (N31°35.58' E130°38.33' H451m)

遠望観測(Visual Observation)

	月計 total	最大(起日) max (date)
爆発回数(Number of explosive eruptions)	64	13 (27)
降灰量(Amount of ash fall) (g/m ²)	18	9 (29)

A,B火口(A,B crater)

	最大(起日) max (date)
噴煙量(Quantity of plumes) (JMA's scale)	2 (1,21)
噴煙の高さ(Height of plumes) (m)	500 (1,21)

昭和火口(Showa crater)

	最大(起日) max (date)
噴煙量(Quantity of plumes) (JMA's scale)	5 (1)
噴煙の高さ(Height of plumes) (m)	3300 (1)

噴煙の色(Color of plumes)	W,LW,GW
他の火山現象(Other volcanic phenomena)	GI,AS,VL,Bm,PF,AF

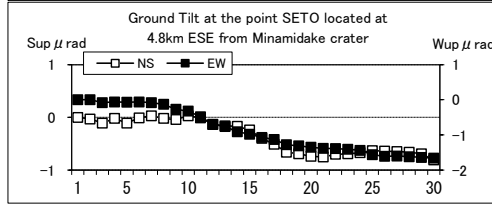
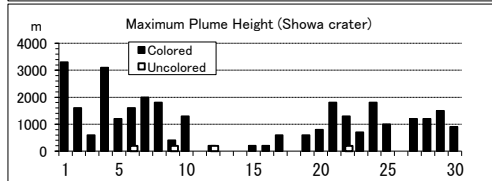
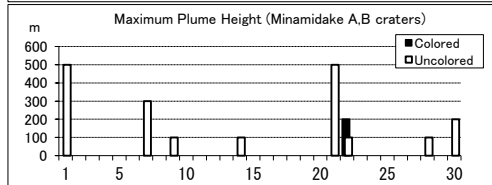
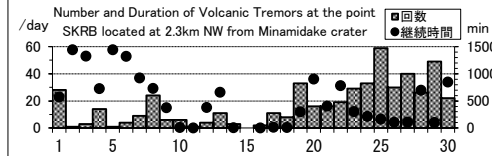
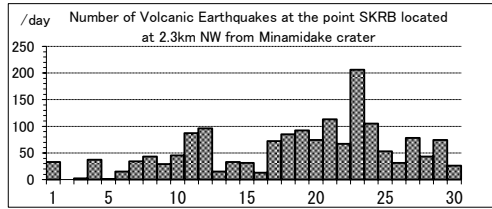
Note: Plumes were from Mt. Minamidake A Crater(A), B Crater(B) and Showa Crater(S)

Note: Uncolored:Plume color was White(W).

Colored:Plume color was Light white(LW), Grayish white(GW), Gray(G) and other.

Visual observation of explosion is described on another sheet.

Sakurajima: June,2015



(45)薩摩硫黄島

震動観測(Seismic Observation)

Observation Point: STI1	月計 total	最大(起日) max (date)
火山性地震回数(Number of volcanic earthquakes)	130	9 (21)
火山性微動回数(Number of volcanic tremors)	1	1 (25)
微動継続時間(Duration of volcanic tremors) (min.)	0.6	0.6 (25)

Note: STI1 (N30°47.27' E130°18.12' H394m)

遠望観測(Visual Observation)

	最大(起日) max (date)
噴煙量(Quantity of plumes) (JMA's scale)	2 (abbr.)
噴煙の高さ(Height of plumes) (m)	900 (20)

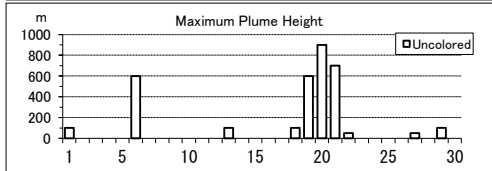
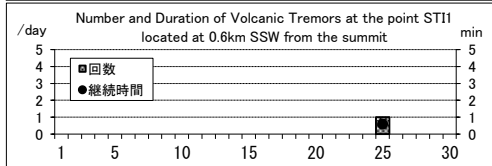
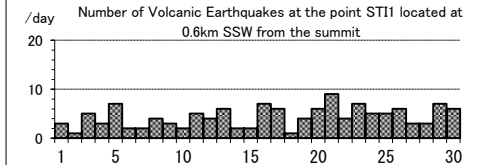
噴煙の色(Color of plumes)	W
他の火山現象(Other volcanic phenomena)	GI

Note: Uncolored:Plume color was White(W)*.

Colored:Plume color was Light white(LW), Grayish white(GW), Gray(G) and other.

*Uncolored plumes mean only White(W) color since 1st April, 2010.

Satsuma-Iojima: June,2015



(46)口永良部島

震動観測(Seismic Observation) Observation Point: KEHT,KER4	月計 total	最大(起日) max (date)
火山性地震回数(Number of volcanic earthquakes)	232	33 (17)
火山性微動回数(Number of volcanic tremors)	1	1 (18)
微動継続時間(Duration of volcanic tremors) (min.)	29	29 (18)

Note: KEHT (N30°27.66' E130°13.89' H231m), KER4 (N30°26.70' E130°11.88' H146m)

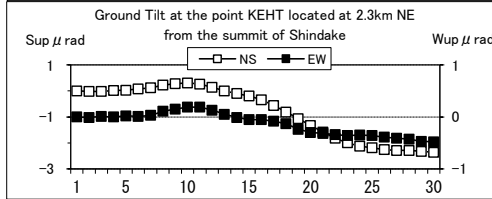
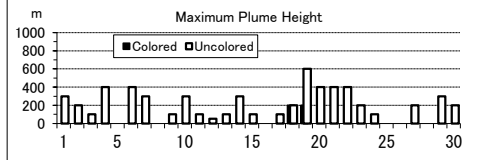
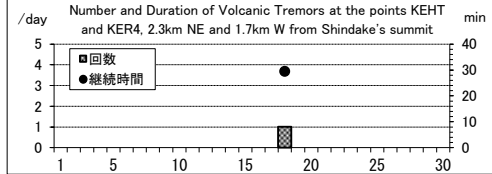
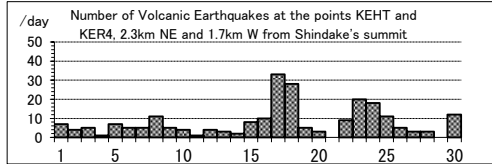
遠望観測(Visual Observation)	最大(起日) max (date)
噴煙量(Quantity of plumes) (JMA's scale)	2 (19)
噴煙の高さ(Height of plumes) (m)	600 (19)

噴煙の色(Color of plumes)	W,GW
他の火山現象(Other volcanic phenomena)	-

Note: Uncolored:Plume color was White(W)*
Colored:Plume color was Light white(LW), Grayish white(GW), Gray(G) and other.

*Uncolored plumes mean only White(W) color since 1st April, 2010.

Kuchinoerabujima: June,2015



(47)諏訪之瀬島

震動観測(Seismic Observation) Observation Point: SWA1	月計 total	最大(起日) max (date)
火山性地震回数(Number of volcanic earthquakes)	28	5 (3)
火山性微動回数(Number of volcanic tremors)	12	2 (2)
微動継続時間(Duration of volcanic tremors) (min.)	9984	1440 (abbr.)

Note: SWA1 (N29°37.64' E129°42.38' H440m)
* Continuous volcanic tremors occurred intermittently in this month.

遠望観測(Visual Observation)	月計 total	最大(起日) max (date)
爆発回数(Number of explosive eruptions)	-	-

	最大(起日) max (date)
噴煙量(Quantity of plumes) (JMA's scale)	1 (6,28)
噴煙の高さ(Height of plumes) (m)	200 (6,28)

噴煙の色(Color of plumes)	W
他の火山現象(Other volcanic phenomena)	GI

Note: Uncolored:Plume color was White(W)*
Colored:Plume color was Light white(LW), Grayish white(GW), Gray(G) and other.

*Uncolored plumes mean only White(W) color since 1st April, 2010.

Suwanosejima: June,2015

