

# 火山観測 Summary of Observations on Volcanoes

## 常時観測 平成27年(2015年)1月

### Continuous Observation in January,2015

#### (1)アトサヌプリ

##### 震動観測(Seismic Observation)

Observation Point: AAT2	月計 total	最大(起日) max (date)
火山性地震回数(Number of volcanic earthquakes)	2	1 (8,13)
火山性微動回数(Number of volcanic tremors)	-	-
微動継続時間(Duration of volcanic tremors) (min.)	-	-

Note: AAT2 (N43°37.11' E144°27.01' H156m)

##### 遠望観測(Visual Observation)

	最大(起日) max (date)
噴煙量(Quantity of plumes) (JMA's scale)	1 (abbr.)
噴煙の高さ(Height of plumes) (m)	300 (3,21)
噴煙の色(Color of plumes)	W
他の火山現象(Other volcanic phenomena)	-

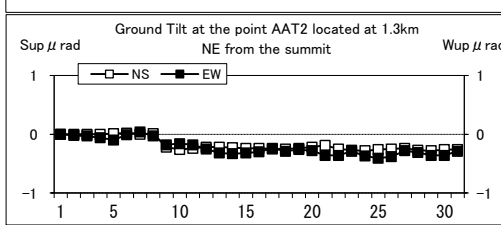
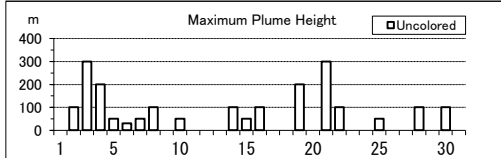
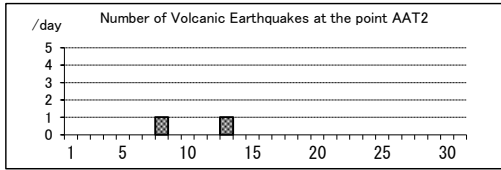
Note: Plumes were from Upper part of F1 Fumaroles(Location U),

Middle part of F1 Fumaroles(M) Lower part of F1 Fumaroles(L) and/or F2 Fumaroles(F)

Note: Uncolored:Plume color was White(W).

Colored:Plume color was Light white(LW), Grayish white(GW), Gray(G) and other.

#### Atosanupuri: January,2015



#### (2)雌阿寒岳

##### 震動観測(Seismic Observation)

Observation Point: MEAB	月計 total	最大(起日) max (date)
火山性地震回数(Number of volcanic earthquakes)	7	2 (10)
火山性微動回数(Number of volcanic tremors)	-	-
微動継続時間(Duration of volcanic tremors) (min.)	-	-

Note: MEAB (N43°22.78' E143°58.65' H680m)

##### 遠望観測(Visual Observation)

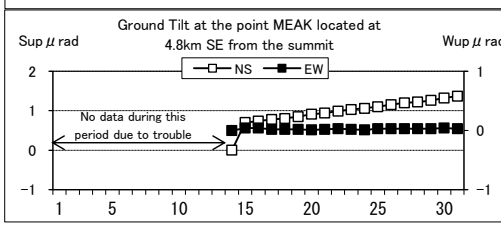
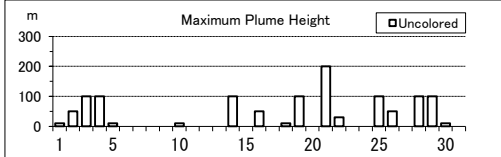
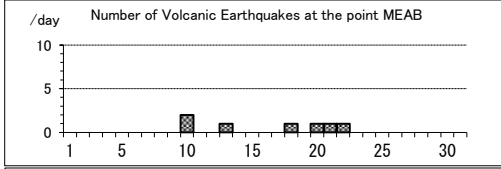
	最大(起日) max (date)
噴煙量(Quantity of plumes) (JMA's scale)	1 (abbr.)
噴煙の高さ(Height of plumes) (m)	200 (21)
噴煙の色(Color of plumes)	W
他の火山現象(Other volcanic phenomena)	-

Note: Plumes were from the Pommachineshiri Summit Crater(LocationT), the Nakamachineshiri Crater(U), the Akanuma Crater(M) and/or Pommachineshiri NW Fumaroles(N).

Note: Uncolored:Plume color was White(W).

Colored:Plume color was Light white(LW), Grayish white(GW), Gray(G) and other.

#### Meakandake: January,2015



#### (3)大雪山

##### 震動観測(Seismic Observation)

Observation Point: TIAE	月計 total	最大(起日) max (date)
火山性地震回数(Number of volcanic earthquakes)	16	4 (1)
火山性微動回数(Number of volcanic tremors)	-	-
微動継続時間(Duration of volcanic tremors) (min.)	-	-

Note: TIAE (N43°39.66' E142°49.62' H1607m)

##### 遠望観測(Visual Observation)

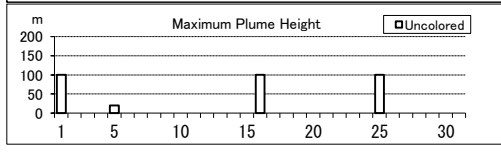
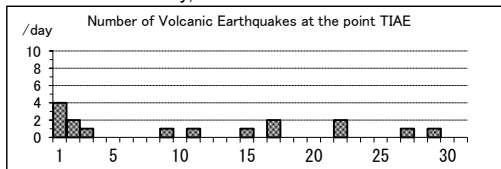
	最大(起日) max (date)
噴煙量(Quantity of plumes) (JMA's scale)	1 (abbr.)
噴煙の高さ(Height of plumes) (m)	100 (1,16,25)
噴煙の色(Color of plumes)	W
他の火山現象(Other volcanic phenomena)	-

Note: Plumes were from I Fumaroles(Location I)

Note: Uncolored:Plume color was White(W).

Colored:Plume color was Light white(LW), Grayish white(GW), Gray(G) and other.

#### Taisetsuzan:January,2015



(4)十勝岳

震動観測(Seismic Observation)

Observation Point: TOKH	月計	最大(起日)
	total	max (date)
火山性地震回数(Number of volcanic earthquakes)	68	32 (26)
火山性微動回数(Number of volcanic tremors)	-	-
微動継続時間(Duration of volcanic tremors) (min.)	-	-

Note: TOKH (N43 25.96' E142 40.15' H1,355m)

遠望観測(Visual Observation)

最大(起日) max (date)	
	噴煙量(Quantity of plumes) (JMA's scale)
噴煙の高さ(Height of plumes) (m)	100 (19)

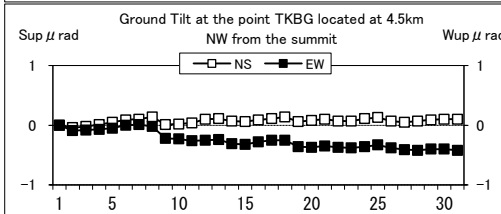
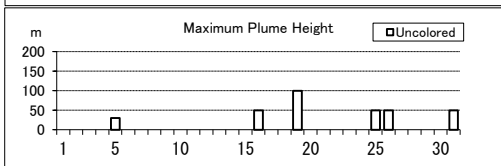
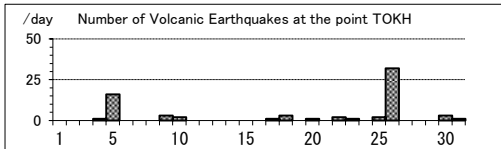
噴煙の色(Color of plumes)	W
他の火山現象(Other volcanic phenomena)	-

Note: Plumes were from the Taisho Crater(Location x), the 62 crater Area(P,Q,Y),the Furikozawa Fumaroles (F) and/or the Kyufun Crater (Z).

Note: Uncolored:Plume color was White(W).

Colored:Plume color was Light white(LW), Grayish white(GW), Gray(G) and other.

Tokachidake: January,2015



(5)樽前山

震動観測(Seismic Observation)

Observation Point: TARC	月計	最大(起日)
	total	max (date)
火山性地震回数(Number of volcanic earthquakes)	58	6 (16,29)
火山性微動回数(Number of volcanic tremors)	-	-
微動継続時間(Duration of volcanic tremors) (min.)	-	-

Note: TARC (N42 42.23' E141 22.64' H638m)

遠望観測(Visual Observation)

最大(起日) max (date)	
	噴煙量(Quantity of plumes) (JMA's scale)
噴煙の高さ(Height of plumes) (m)	100 (16)

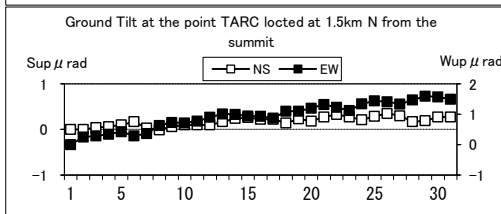
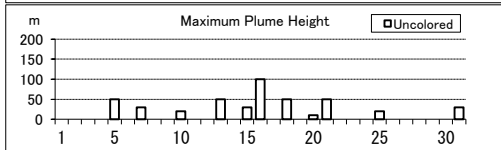
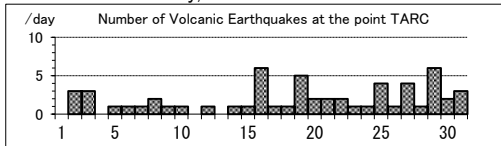
噴煙の色(Color of plumes)	W
他の火山現象(Other volcanic phenomena)	-

Note: Plumes were from the Summit Area(Location A, B and/or E).

Note: Uncolored:Plume color was White(W).

Colored:Plume color was Light white(LW), Grayish white(GW), Gray(G) and other.

Tarumasan: January,2015



(6)倶多楽

震動観測(Seismic Observation)

Observation Point: KUJG	月計	最大(起日)
	total	max (date)
火山性地震回数(Number of volcanic earthquakes)	-	-
火山性微動回数(Number of volcanic tremors)	-	-
微動継続時間(Duration of volcanic tremors) (min.)	-	-

Note: KUJG (N42 29.50' E141 07.68' H327m)

遠望観測(Visual Observation)

最大(起日) max (date)	
	噴煙量(Quantity of plumes) (JMA's scale)
噴煙の高さ(Height of plumes) (m)	50 (13,30)

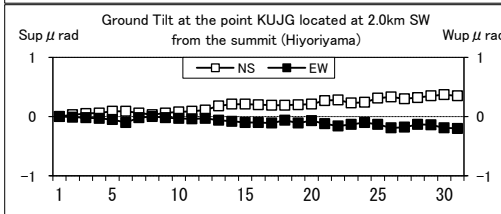
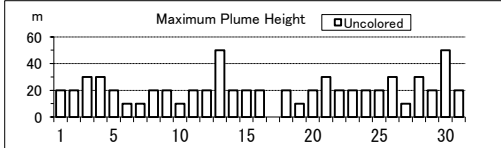
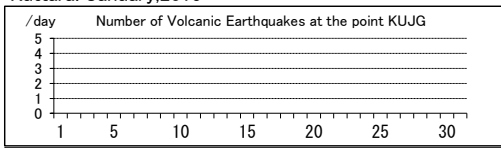
噴煙の色(Color of plumes)	W
他の火山現象(Other volcanic phenomena)	-

Note: Plumes were from Hiyoriyama Fumarole(Location H)

Note: Uncolored:Plume color was White(W).

Colored:Plume color was Light white(LW), Grayish white(GW), Gray(G) and other.

Kuttara: January,2015



(7)有珠山

震動観測(Seismic Observation) Observation Point: USUA	月計 total	最大(起日) max (date)
火山性地震回数(Number of volcanic earthquakes)	27	3 (10)
火山性微動回数(Number of volcanic tremors)	-	-
微動継続時間(Duration of volcanic tremors) (min.)	-	-

Note: USUA (N42°31.70' E140°50.17' H246m)

遠望観測(Visual Observation)	最大(起日) max (date)
噴煙量(Quantity of plumes) (JMA's scale)	1 (abbr.)
噴煙の高さ(Height of plumes) (m)	50 (26)

噴煙の色(Color of plumes)	W
他の火山現象(Other volcanic phenomena)	-

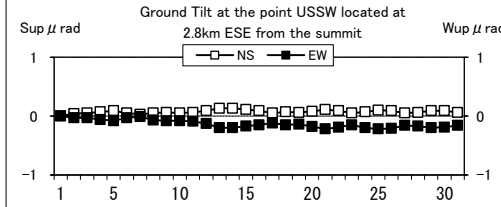
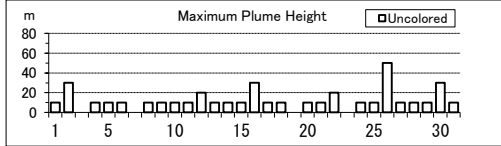
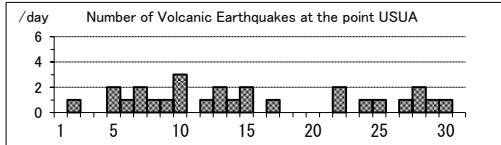
Note: Plumes were from the Summit Area of Usuzan(Location P) .

Mt.showa-shinzan(Z), Nishi-yama vent group(N) and Konpira-yama vent group(K).

Note: Uncolored:Plume color was White(W).

Colored:Plume color was Light white(LW), Grayish white(GW), Gray(G) and other.

Usuzan: January,2015



(8)北海道駒ヶ岳

震動観測(Seismic Observation) Observation Point: KOMA	月計 total	最大(起日) max (date)
火山性地震回数(Number of volcanic earthquakes)	3	2 (1)
火山性微動回数(Number of volcanic tremors)	-	-
微動継続時間(Duration of volcanic tremors) (min.)	-	-

Note: KOMA (N42°03.19' E140°38.29' H265m)

遠望観測(Visual Observation)	最大(起日) max (date)
噴煙量(Quantity of plumes) (JMA's scale)	-
噴煙の高さ(Height of plumes) (m)	-

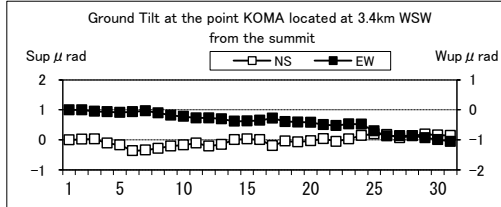
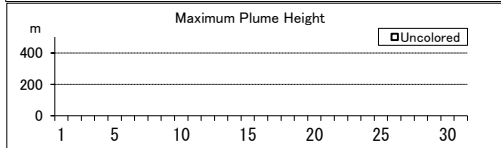
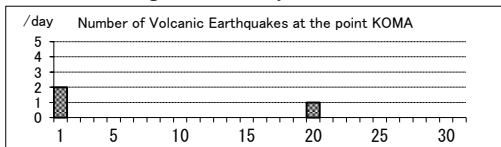
噴煙の色(Color of plumes)	-
他の火山現象(Other volcanic phenomena)	-

Note: Plumes were from the Showa-4 Crater(Location D1) and/or the 96 South Crater(D2).

Note: Uncolored:Plume color was White(W).

Colored:Plume color was Light white(LW), Grayish white(GW), Gray(G) and other.

Hokkaido-Komagatake: January,2015



(9)恵山

震動観測(Seismic Observation) Observation Point: ESDK	月計 total	最大(起日) max (date)
火山性地震回数(Number of volcanic earthquakes)	3	2 (26)
火山性微動回数(Number of volcanic tremors)	-	-
微動継続時間(Duration of volcanic tremors) (min.)	-	-

Note: ESDK (N41°48.69' E141°09.73' H369m)

遠望観測(Visual Observation)	最大(起日) max (date)
噴煙量(Quantity of plumes) (JMA's scale)	1 (abbr.)
噴煙の高さ(Height of plumes) (m)	100 (28)

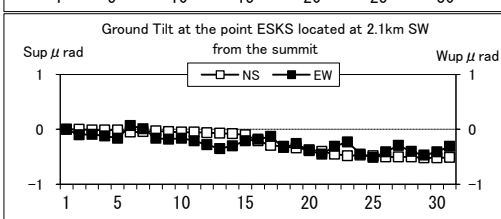
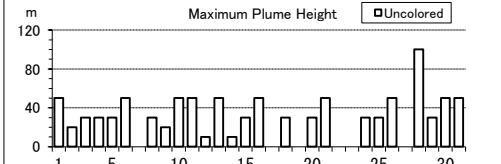
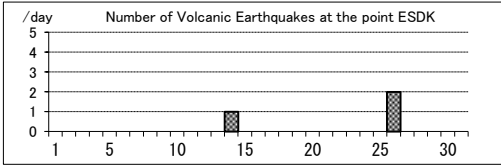
噴煙の色(Color of plumes)	W
他の火山現象(Other volcanic phenomena)	-

Note: Plumes were from X Crater(Location x), Y Crater(Y)

Note: Uncolored:Plume color was White(W).

Colored:Plume color was Light white(LW), Grayish white(GW), Gray(G) and other.

Esan: January,2015



(10)岩木山

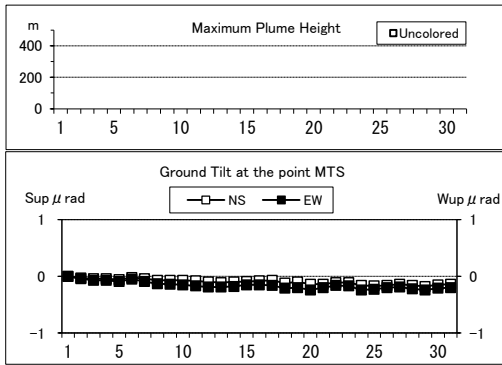
遠望観測(Visual Observation)		最大(起日) max (date)
噴煙量(Quantity of plumes) (JMA's scale)	-	-
噴煙の高さ(Height of plumes) (m)	-	-
噴煙の色(Color of plumes)		
他の火山現象(Other volcanic phenomena)	-	-

Note: Plumes were from Iwaki Summit

Note: Uncolored:Plume color was White(W).

Colored:Plume color was Light white(LW), Grayish white(GW), Gray(G) and other.

Iwakisan: January,2015



(11)秋田焼山

震動観測(Seismic Observation)		月計 total	最大(起日) max (date)
Observation Point: AYBN			
火山性地震回数(Number of volcanic earthquakes)	16	2 (abbr.)	-
火山性微動回数(Number of volcanic tremors)	-	-	-
微動継続時間(Duration of volcanic tremors) (min.)	-	-	-

Note: AYBN (N39 56.72' E140 43.17' H738m)

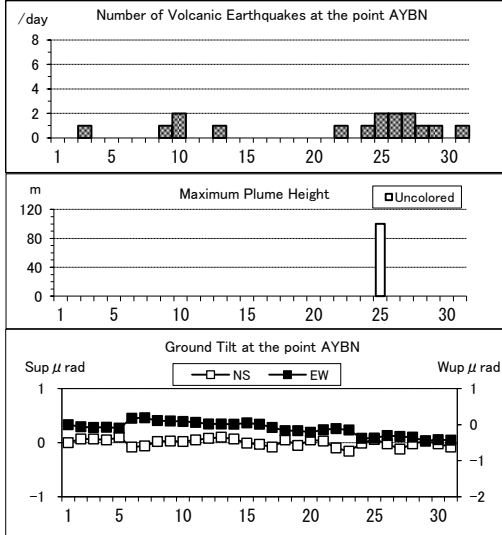
遠望観測(Visual Observation)		最大(起日) max (date)
噴煙量(Quantity of plumes) (JMA's scale)	1 (25)	-
噴煙の高さ(Height of plumes) (m)	100 (25)	-
噴煙の色(Color of plumes)		
他の火山現象(Other volcanic phenomena)	W	-

Note: Plumes were from Yakeyama Summit

Note: Uncolored:Plume color was White(W).

Colored:Plume color was Light white(LW), Grayish white(GW), Gray(G) and other.

Akita-Yakeyama : January,2015



(12)岩手山

震動観測(Seismic Observation)		月計 total	最大(起日) max (date)
Observation Point: UMG2, NIWMV(NIED)			
火山性地震回数(Number of volcanic earthquakes)	42	14 (20)	-
火山性微動回数(Number of volcanic tremors)	-	-	-
微動継続時間(Duration of volcanic tremors) (min.)	-	-	-

Note:UMG2 (N39 49.94' E141 02.45' H609m), NIWMV(NIED) (N39 53.01' E140 56.14' H804m)

遠望観測(Visual Observation)		最大(起日) max (date)
噴煙量(Quantity of plumes) (JMA's scale)	1 (abbr.)	-
噴煙の高さ(Height of plumes) (m)	20 (24)	-

噴煙の色(Color of plumes)	W
他の火山現象(Other volcanic phenomena)	-

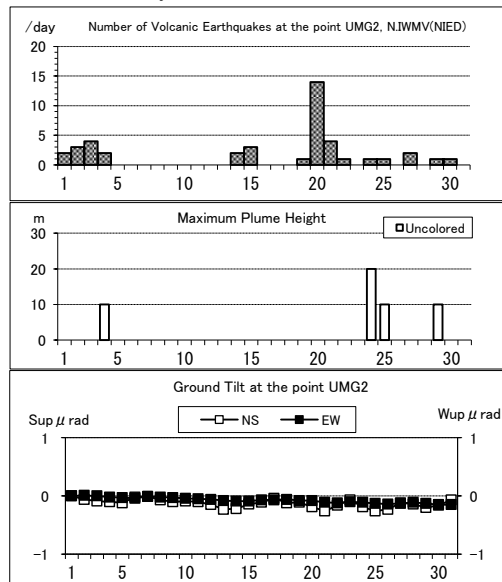
Note: Plumes were from the Kurokurayama Summit(Location x), the Ojigokudani(Y-6)

Note: Uncolored:Plume color was White(W).\*

Colored:Plume color was Light white(LW), Grayish white(GW), Gray(G) and other.

\*Uncolored plumes mean only White(W) color since 1st April, 2010.

Iwatesan: January,2015



(13)秋田駒ヶ岳

震動観測(Seismic Observation)

Observation Point: AKHC	月計	最大(起日)
	total	max (date)
火山性地震回数(Number of volcanic earthquakes)	8	3 (2)
火山性微動回数(Number of volcanic tremors)	-	-
微動継続時間(Duration of volcanic tremors) (min.)	-	-

Note: AKHC (N39 46.08' E140 48.41' H1304m)

遠望観測(Visual Observation)

	最大(起日) max (date)
噴煙量(Quantity of plumes) (JMA's scale)	1 (21,25)
噴煙の高さ(Height of plumes) (m)	10 (21,25)

噴煙の色(Color of plumes)	W
他の火山現象(Other volcanic phenomena)	-

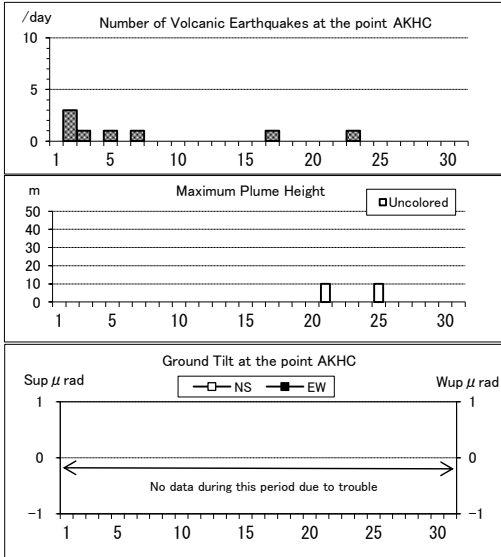
Note: Plumes were from Medake Summit(Location Z-1a), Geothermal area on the N part of Medake Summit(Z-1b), W part of Medake Summit(Z-1c).

Geothermal area on the NE slope of Medake Summit(Z-1d) and/or Crater on the E part of Medake Summit(Z-1e)

Note: Uncolored:Plume color was White(W).

Colored:Plume color was Light white(LW), Grayish white(GW), Gray(G) and other.

Akita-Komagatake: January,2015



(14)鳥海山

震動観測(Seismic Observation)

Observation Point: CHKN	月計	最大(起日)
	total	max (date)
火山性地震回数(Number of volcanic earthquakes)	-	-
火山性微動回数(Number of volcanic tremors)	-	-
微動継続時間(Duration of volcanic tremors) (min.)	-	-

Note: CHKN (N39'07.75' E139'56.36' H335m)

遠望観測(Visual Observation)

	最大(起日) max (date)
噴煙量(Quantity of plumes) (JMA's scale)	-
噴煙の高さ(Height of plumes) (m)	-

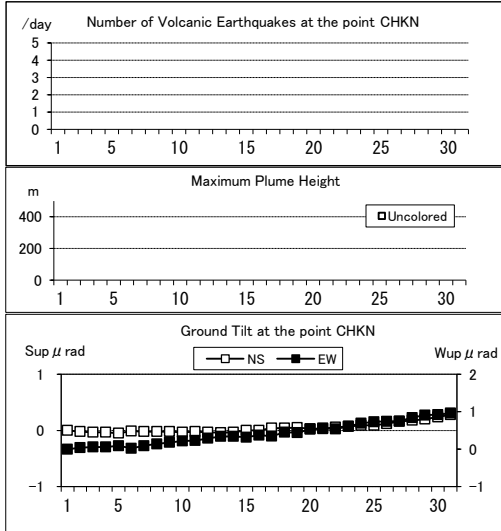
噴煙の色(Color of plumes)	-
他の火山現象(Other volcanic phenomena)	-

Note: Plumes were from Shin Summit(Location Y)

Note: Uncolored:Plume color was White(W).

Colored:Plume color was Light white(LW), Grayish white(GW), Gray(G) and other.

Chokaisan: January,2015



(15)栗駒山

震動観測(Seismic Observation)

Observation Point: KRK2	月計	最大(起日)
	total	max (date)
火山性地震回数(Number of volcanic earthquakes)	-	-
火山性微動回数(Number of volcanic tremors)	-	-
微動継続時間(Duration of volcanic tremors) (min.)	-	-

Note: KRK2 (N38 56.45' E140 49.08' H840m)

遠望観測(Visual Observation)

	最大(起日) max (date)
噴煙量(Quantity of plumes) (JMA's scale)	-
噴煙の高さ(Height of plumes) (m)	-

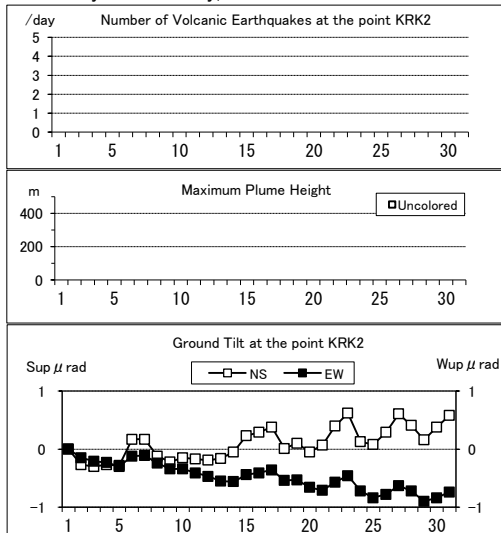
噴煙の色(Color of plumes)	-
他の火山現象(Other volcanic phenomena)	-

Note: Plumes were from Showa Lake(Location Z-1),Old Crater (W-1)

Note: Uncolored:Plume color was White(W).

Colored:Plume color was Light white(LW), Grayish white(GW), Gray(G) and other.

Kurikomayama: January,2015



(16)蔵王山

震動観測(Seismic Observation)

Observation Point: ZABD	月計	最大(起日)
	total	max (date)
火山性地震回数(Number of volcanic earthquakes)	6	2 (6)
火山性微動回数(Number of volcanic tremors)	1	1 (19)
微動継続時間(Duration of volcanic tremors) (min.)	4	4 (19)

Note: ZABD (N38°07.33' E140°23.69' H1012m)

遠望観測(Visual Observation)

	最大(起日) max (date)
噴煙量(Quantity of plumes) (JMA's scale)	-
噴煙の高さ(Height of plumes) (m)	-

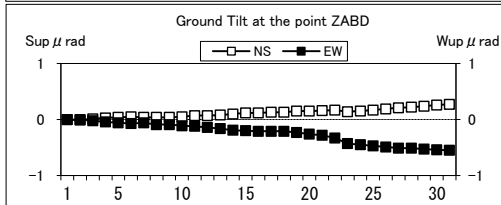
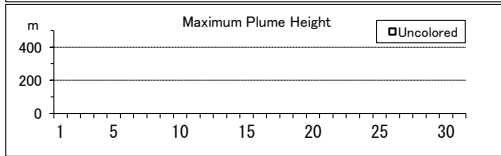
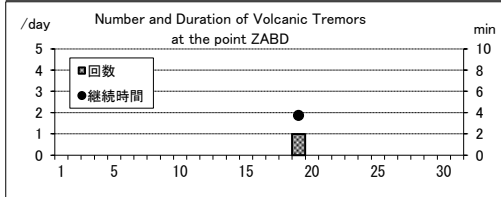
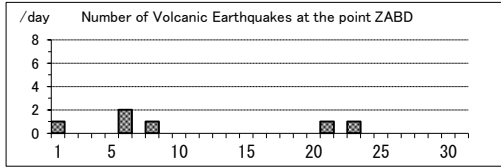
噴煙の色(Color of plumes)	-
他の火山現象(Other volcanic phenomena)	-

Note: Plumes were from Okama(Location S-1b),Maruyamasawa(Y-2a)

Note: Uncolored:Plume color was White(W).

Colored:Plume color was Light white(LW), Grayish white(GW), Gray(G) and other.

Zaozan: January,2015



(17)吾妻山

震動観測(Seismic Observation)

Observation Point: AZMA	月計	最大(起日)
	total	max (date)
火山性地震回数(Number of volcanic earthquakes)	744	193 (14)
火山性微動回数(Number of volcanic tremors)	1	1 (28)
微動継続時間(Duration of volcanic tremors) (min.)	3	3 (28)

Note: AZMA (N37°43.34' E140°16.53' H1295m)

遠望観測(Visual Observation)

	最大(起日) max (date)
噴煙量(Quantity of plumes) (JMA's scale)	1 (abbr.)
噴煙の高さ(Height of plumes) (m)	100 (29)

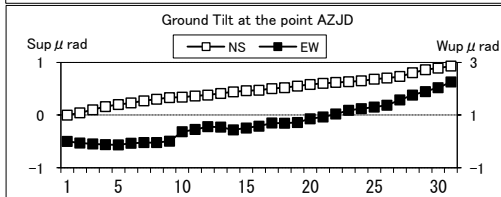
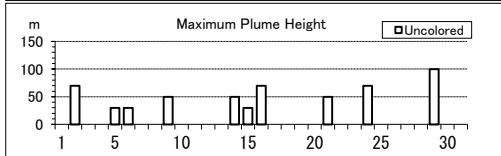
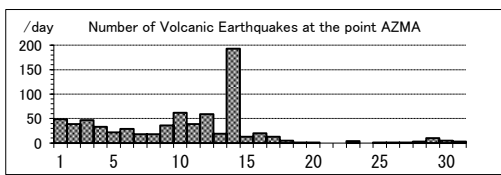
噴煙の色(Color of plumes)	W
他の火山現象(Other volcanic phenomena)	-

Note: Plumes were from the Oana Crater

Note: Uncolored:Plume color was White(W).

Colored:Plume color was Light white(LW), Grayish white(GW), Gray(G) and other.

Azumayama: January,2015



(18)安達太良山

震動観測(Seismic Observation)

Observation Point: ADTB	月計	最大(起日)
	total	max (date)
火山性地震回数(Number of volcanic earthquakes)	-	-
火山性微動回数(Number of volcanic tremors)	-	-
微動継続時間(Duration of volcanic tremors) (min.)	-	-

Note: ADTB(N37°38.05' E140°18.21' H1320m)

遠望観測(Visual Observation)

	最大(起日) max (date)
噴煙量(Quantity of plumes) (JMA's scale)	-
噴煙の高さ(Height of plumes) (m)	-

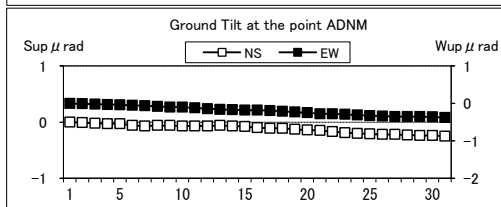
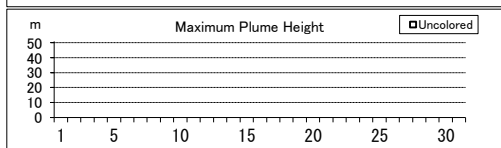
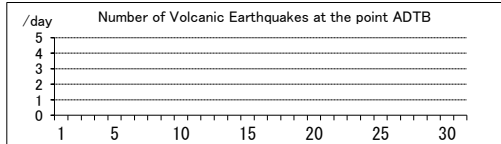
噴煙の色(Color of plumes)	-
他の火山現象(Other volcanic phenomena)	-

Note: Plumes were from the Numanodaira - SW area.

Note: Uncolored:Plume color was White(W).

Colored:Plume color was Light white(LW), Grayish white(GW), Gray(G)

Adatarayama: January,2015



(19)磐梯山

震動観測(Seismic Observation)

Observation Point: BND A	月計	最大(起日)
	total	max (date)
火山性地震回数(Number of volcanic earthquakes)	15	5 (24)
火山性微動回数(Number of volcanic tremors)	-	-
微動継続時間(Duration of volcanic tremors) (min.)	-	-

Note: BND A(N37°35.04' E140°04.79' H1000m)

遠望観測(Visual Observation)

	最大(起日) max (date)
噴煙量(Quantity of plumes) (JMA's scale)	1 (abbr.)
噴煙の高さ(Height of plumes) (m)	50 (22)

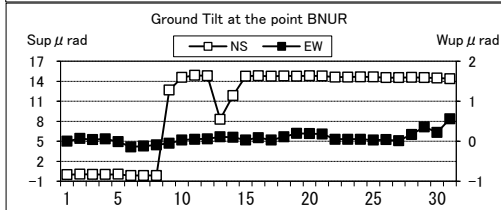
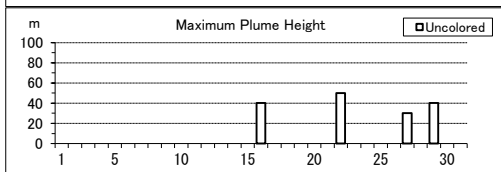
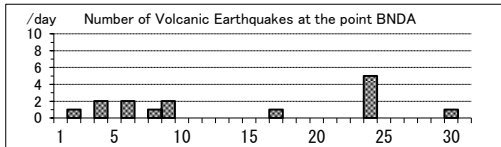
噴煙の色(Color of plumes)	W
他の火山現象(Other volcanic phenomena)	-

Note: Plumes were from the Fumarolic area in Crater wall.

Note: Uncolored:Plume color was White(W).

Colored:Plume color was Light white(LW), Grayish white(GW), Gray(G) and other.

Bandaisan: January,2015



(20)那須岳

震動観測(Seismic Observation)

Observation Point: NSUA	月計	最大(起日)
	total	max (date)
火山性地震回数(Number of volcanic earthquakes)	9	2 (16,17)
火山性微動回数(Number of volcanic tremors)	-	-
微動継続時間(Duration of volcanic tremors) (min.)	-	-

Note: NSUA (N37°06.38' E139°59.44' H1083m)

遠望観測(Visual Observation)

	最大(起日) max (date)
噴煙量(Quantity of plumes) (JMA's scale)	1 (abbr.)
噴煙の高さ(Height of plumes) (m)	200 (4)

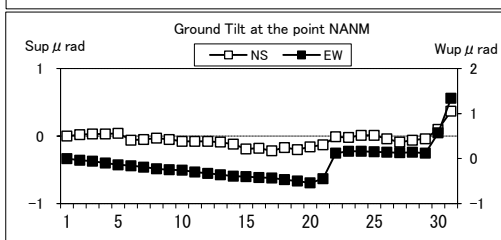
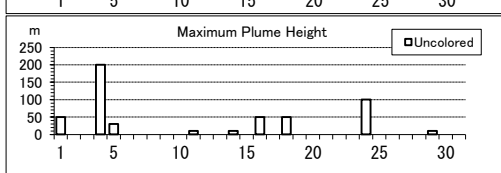
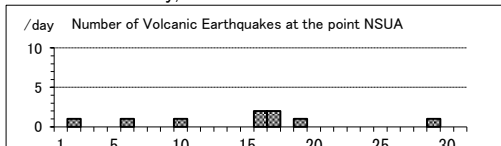
噴煙の色(Color of plumes)	W
他の火山現象(Other volcanic phenomena)	-

Note: Plumes were from the west flank of Mt. Nasudake.

Note: Uncolored:Plume color was White(W).

Colored:Plume color was Light white(LW), Grayish white(GW), Gray(G) and other.

Nasudake: January,2015



(21)日光白根山

震動観測(Seismic Observation)

Observation Point: NSYG	月計	最大(起日)
	total	max (date)
火山性地震回数(Number of volcanic earthquakes)	20	4 (22)
火山性微動回数(Number of volcanic tremors)	-	-
微動継続時間(Duration of volcanic tremors) (min.)	-	-

Note: NSYG (N36°48.22' E139°24.46' H1642m)

遠望観測(Visual Observation)

	最大(起日) max (date)
噴煙量(Quantity of plumes) (JMA's scale)	-
噴煙の高さ(Height of plumes) (m)	-

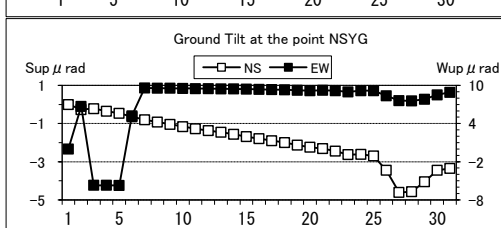
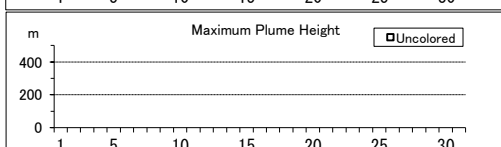
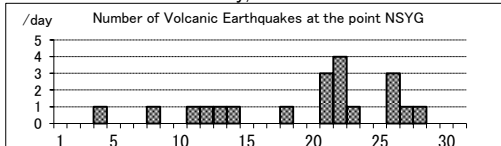
噴煙の色(Color of plumes)	-
他の火山現象(Other volcanic phenomena)	-

Note: Plumes were from Summit Area of Nikko-Shiranesan(Location A)

Note: Uncolored:Plume color was White(W).

Colored:Plume color was Light white(LW), Grayish white(GW), Gray(G) and other.

Nikko-Shiranesan: January,2015



(22)草津白根山

震動観測(Seismic Observation)

	月計 total	最大(起日) max (date)
火山性地震回数(Number of volcanic earthquakes)	107	40 (24)
火山性微動回数(Number of volcanic tremors)	-	-
微動継続時間(Duration of volcanic tremors) (min.)	-	-

Note: KSHA (N36°38.88' E138°32.73' H1933m)

遠望観測(Visual Observation)

	最大(起日) max (date)
噴煙量(Quantity of plumes) (JMA's scale)	1 (abbr.)
噴煙の高さ(Height of plumes) (m)	100 (25)

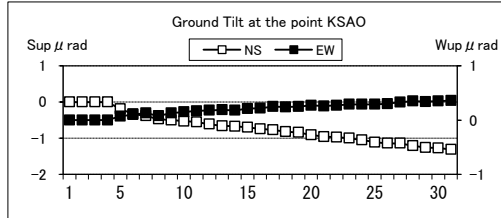
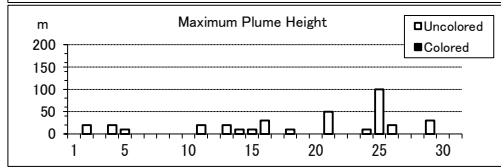
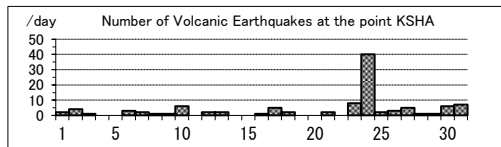
噴煙の色(Color of plumes)	W
他の火山現象(Other volcanic phenomena)	-

Note: Plumes were from the Yugama Crater and Fumaroles at northern side of Yugama Crater

Note: Uncolored:Plume color was White(W).

Colored:Plume color was Light white(LW), Grayish white(GW), Gray(G) and other.

Kusatsu-Shiranesan: January,2015



(23)浅間山

震動観測(Seismic Observation)

	月計 total	最大(起日) max (date)
火山性地震回数(Number of volcanic earthquakes)	568	34 (2)
火山性微動回数(Number of volcanic tremors)	7	1 (abbr.)
微動継続時間(Duration of volcanic tremors) (min.)	9	1 (8)

Note: ASMB (N36°23.37' E138°31.13' H1864m)

遠望観測(Visual Observation)

	最大(起日) max (date)
噴煙量(Quantity of plumes) (JMA's scale)	1 (abbr.)
噴煙の高さ(Height of plumes) (m)	200 (9)

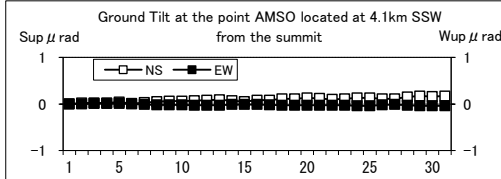
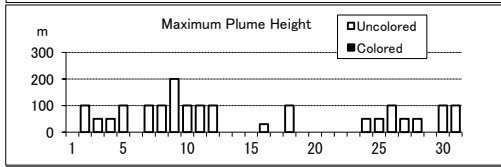
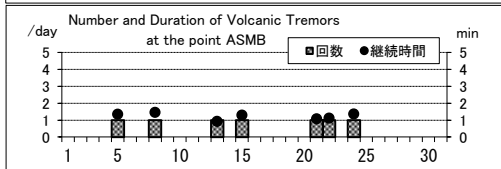
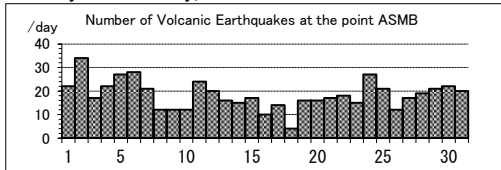
噴煙の色(Color of plumes)	W
他の火山現象(Other volcanic phenomena)	-

Note: Plumes were from the Kamayama Crater(Location A).

Note: Uncolored:Plume color was White(W).

Colored:Plume color was Light white(LW), Grayish white(GW), Gray(G) and other.

Asamayama: January,2015





(24)新潟焼山

震動観測(Seismic Observation)

Observation Point: NYK2	月計	最大(起日)
	total	max (date)
火山性地震回数(Number of volcanic earthquakes)	1	1 (22)
火山性微動回数(Number of volcanic tremors)	-	-
微動継続時間(Duration of volcanic tremors) (min.)	-	-

Note: NYK2 (N36 57.35' E138 02.29' H1147m)

遠望観測(Visual Observation)

最大(起日) max (date)	噴煙量(Quantity of plumes) (JMA's scale)
	1 (abbr.)
噴煙の高さ(Height of plumes) (m)	30 (16,21,24)

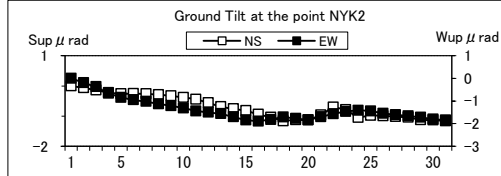
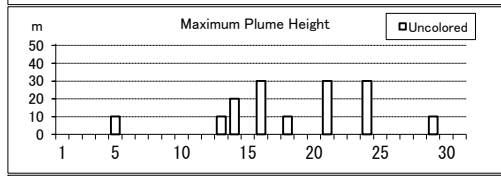
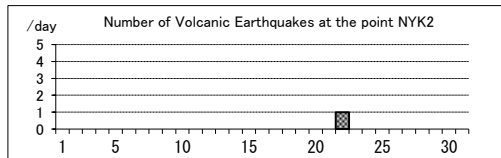
噴煙の色(Color of plumes)	W
他の火山現象(Other volcanic phenomena)	-

Note: Plumes were from Upper East flank(Location A).

Note: Uncolored:Plume color was White(W).

Colored:Plume color was Light white(LW), Grayish white(GW), Gray(G) and other.

Niigata-Yakeyama: January,2015



(25)焼岳

震動観測(Seismic Observation)

Observation Point: YKN2	月計	最大(起日)
	total	max (date)
火山性地震回数(Number of volcanic earthquakes)	13	5 (30)
火山性微動回数(Number of volcanic tremors)	-	-
微動継続時間(Duration of volcanic tremors) (min.)	-	-

Note: YKN2 (N36 15.67' E137 34.45' H1151m)

遠望観測(Visual Observation)

最大(起日) max (date)	噴煙量(Quantity of plumes) (JMA's scale)
	1 (abbr.)
噴煙の高さ(Height of plumes) (m)	50 (abbr.)

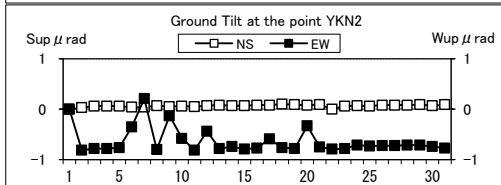
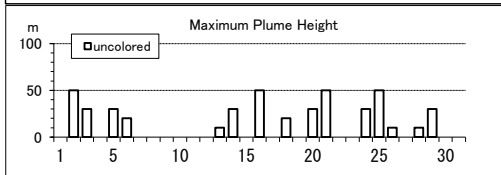
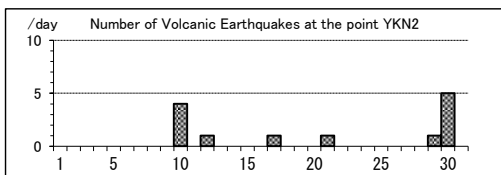
噴煙の色(Color of plumes)	W
他の火山現象(Other volcanic phenomena)	-

Note: Plumes were from the North peak (Location A) and the upper Iwatsubodani (Location B).

Note: Uncolored:Plume color was White(W).

Colored:Plume color was Light white(LW), Grayish white(GW), Gray(G) and other.

Yakedake January,2015



(26)乗鞍岳

震動観測(Seismic Observation)

Observation Point: NOSM	月計	最大(起日)
	total	max (date)
火山性地震回数(Number of volcanic earthquakes)	10	2 (15,24)
火山性微動回数(Number of volcanic tremors)	-	-
微動継続時間(Duration of volcanic tremors) (min.)	-	-

Note: NOSM (N36 06.85' E137 35.81' H1804m)

遠望観測(Visual Observation)

最大(起日) max (date)	噴煙量(Quantity of plumes) (JMA's scale)
	-
噴煙の高さ(Height of plumes) (m)	-

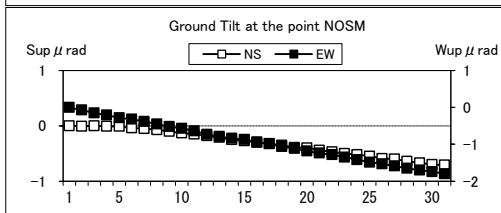
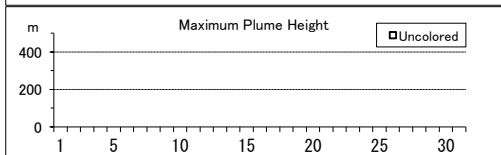
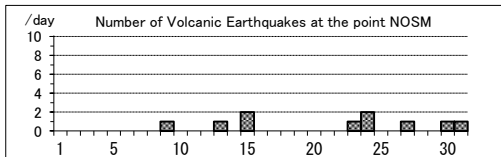
噴煙の色(Color of plumes)	-
他の火山現象(Other volcanic phenomena)	-

Note: Plumes were from Summit Crater(Location A).

Note: Uncolored:Plume color was White(W).

Colored:Plume color was Light white(LW), Grayish white(GW), Gray(G) and other.

Norikuradake: January,2015



(27)御嶽山

震動観測(Seismic Observation)  
Observation Point: ONTA

	月計 total	最大(起日) max (date)
火山性地震回数(Number of volcanic earthquakes)	117	11 (5,7)
火山性微動回数(Number of volcanic tremors)	-	-
微動継続時間(Duration of volcanic tremors) (min.)	-	-

Note: ONTA (N35°52.61' E137°29.73' H2228m)

遠望観測(Visual Observation)

	最大(起日) max (date)
噴煙量(Quantity of plumes) (JMA's scale)	2 (9,26,29)
噴煙の高さ(Height of plumes) (m)	300 (29)

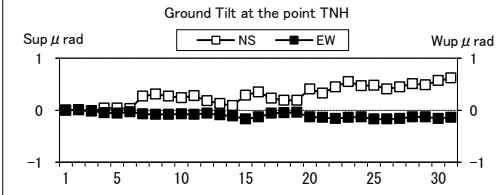
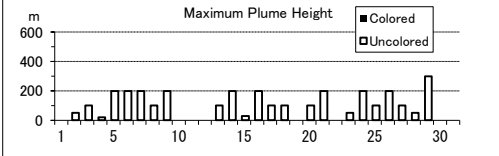
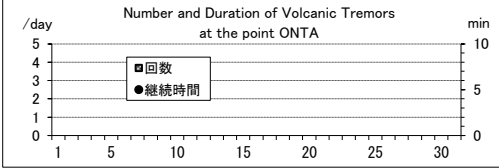
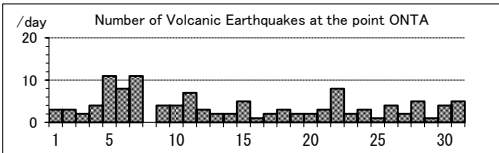
噴煙の色(Color of plumes)	W
他の火山現象(Other volcanic phenomena)	-

Note: Plumes were from the Otaki summit Crater (A) and/or S6

Note: Uncolored:Plume color was White(W).

Colored:Plume color was Light white(LW), Grayish white(GW), Gray(G) and other.

Ontakesan: January,2015



(28)白山

震動観測(Seismic Observation)  
Observation Point: HSMD

	月計 total	最大(起日) max (date)
火山性地震回数(Number of volcanic earthquakes)	34	6 (4)
火山性微動回数(Number of volcanic tremors)	-	-
微動継続時間(Duration of volcanic tremors) (min.)	-	-

Note: HSMD (N36°08.78' E136°45.86' H2345m)

遠望観測(Visual Observation)

	最大(起日) max (date)
噴煙量(Quantity of plumes) (JMA's scale)	-
噴煙の高さ(Height of plumes) (m)	-

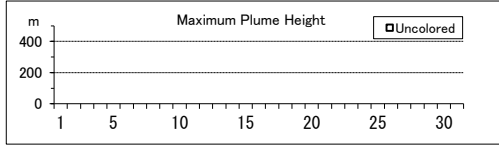
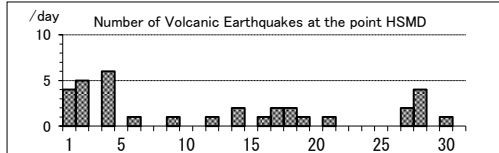
噴煙の色(Color of plumes)	-
他の火山現象(Other volcanic phenomena)	-

Note: Plumes were from Summit Area of Hakusan (Location A)

Note: Uncolored:Plume color was White(W).

Colored:Plume color was Light white(LW), Grayish white(GW), Gray(G) and other.

Hakusan: January,2015



(29)富士山

震動観測(Seismic Observation)  
Observation Point: N.FJ5V(NIED)

	月計 total	最大(起日) max (date)
火山性地震回数(Number of volcanic earthquakes)	45	9 (22)
火山性微動回数(Number of volcanic tremors)	-	-
微動継続時間(Duration of volcanic tremors) (min.)	-	-

Note: N.FJ5V(NIED) (N35°23.08' E138°41.72' H2090m)

遠望観測(Visual Observation)

	最大(起日) max (date)
噴煙量(Quantity of plumes) (JMA's scale)	-
噴煙の高さ(Height of plumes) (m)	-

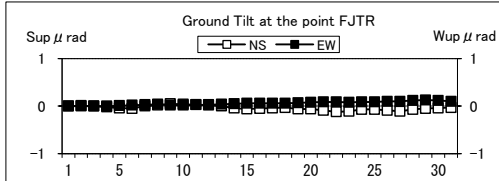
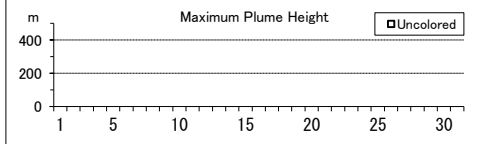
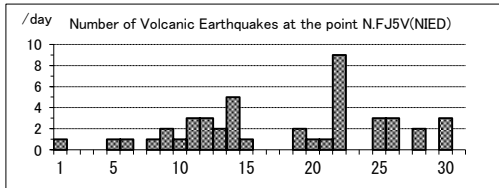
噴煙の色(Color of plumes)	-
他の火山現象(Other volcanic phenomena)	-

Note: Plumes were from Summit Crater(LocationA),Hoei Crater(B)

Note: Uncolored:Plume color was White(W).

Colored:Plume color was Light white(LW), Grayish white(GW), Gray(G) and other.

Fujisan: January,2015



(30)箱根山

震動観測(Seismic Observation)

Observation Point: OK.KOM	月計	最大(起日)
	total	max (date)
火山性地震回数(Number of volcanic earthquakes)	1	1 (22)
火山性微動回数(Number of volcanic tremors)	-	-
微動継続時間(Duration of volcanic tremors) (min.)	-	-

Note: OK.KOM(N35 13.2' E139 02.0' H1049m)

遠望観測(Visual Observation)

	最大(起日) max (date)
噴煙量(Quantity of plumes) (JMA's scale)	1 (abbr.)
噴煙の高さ(Height of plumes) (m)	200 (20,24,29)

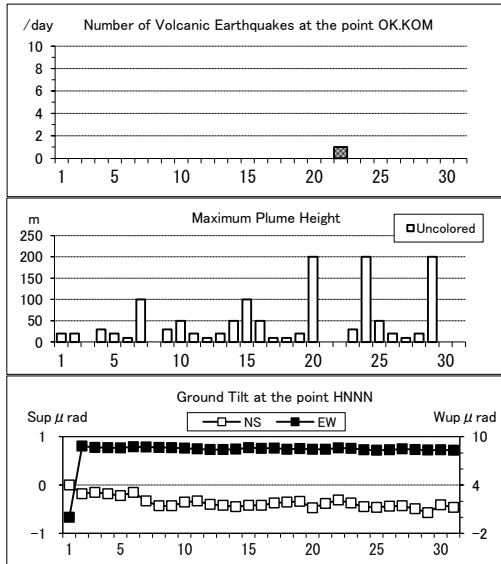
噴煙の色(Color of plumes)	W
他の火山現象(Other volcanic phenomena)	-

Note: Plumes were from Fumaroles near Owakudani(Location A), Fumaroles near Soujigoku(B)

Note: Uncolored:Plume color was White(W).

Colored:Plume color was Light white(LW), Grayish white(GW), Gray(G) and other.

Hakoneyama: January,2015



(31)伊豆東部火山群

震動観測(Seismic Observation)

Observation Point: ITBA.KAMAT3	月計	最大(起日)
	total	max (date)
火山性地震回数(Number of volcanic earthquakes)	13	2 (3,5,7)
火山性微動回数(Number of volcanic tremors)	-	-
微動継続時間(Duration of volcanic tremors) (min.)	-	-

Note: ITBA (N35°00.46' E139°05.87' H12m)

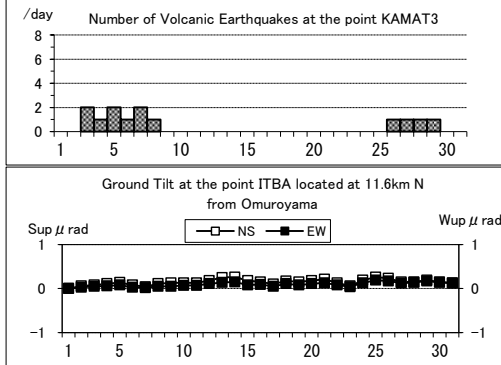
KAMAT3(N34°55.71' E139°03.65' H175m)

遠望観測(Visual Observation)

	最大(起日) max (date)
噴煙量(Quantity of plumes) (JMA's scale)	-
噴煙の高さ(Height of plumes) (m)	-

噴煙の色(Color of plumes)	-
他の火山現象(Other volcanic phenomena)	-

Izu-Tobu Volcanoes: January,2015



(32)伊豆大島

震動観測(Seismic Observation)

Observation Point: OSMA	月計	最大(起日)
	total	max (date)
火山性地震回数(Number of volcanic earthquakes)	106	22 (8)
火山性微動回数(Number of volcanic tremors)	-	-
微動継続時間(Duration of volcanic tremors) (min.)	-	-

Note: OSMA (N34°44.16' E139°23.21' H553m)

遠望観測(Visual Observation)

	最大(起日) max (date)
噴煙量(Quantity of plumes) (JMA's scale)	1 (abbr.)
噴煙の高さ(Height of plumes) (m)	50 (2,31)

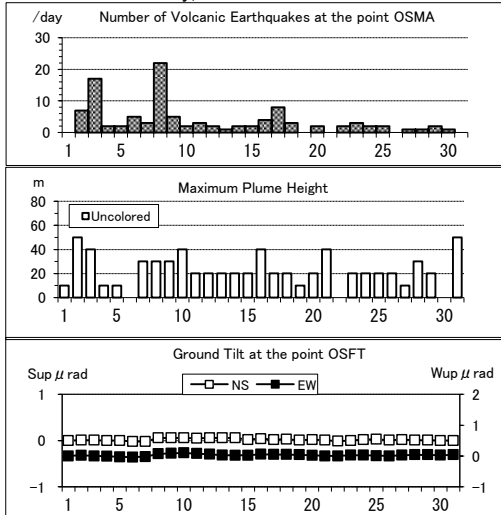
噴煙の色(Color of plumes)	W
他の火山現象(Other volcanic phenomena)	-

Note:Plumes were from the Miharayama Summit Crater(Location A), the Fumaroles at western side of Miharashinzan(A1), the Fumaroles near Kengamine(A2), the Fumaroles at eastern side of Miharashinzan(A3)

Note: Uncolored:Plume color was White(W).

Colored:Plume color was Light white(LW), Grayish white(GW), Gray(G) and other.

Izu-Oshima: January,2015



(33)新島

震動観測(Seismic Observation)

Observation Point: NIST	月計	最大(起日)
	total	max (date)
火山性地震回数(Number of volcanic earthquakes)	2	1 (3,19)
火山性微動回数(Number of volcanic tremors)	-	-
微動継続時間(Duration of volcanic tremors) (min.)	-	-

Note: NIST (N34°21.76' E139°14.92' H41m)

遠望観測(Visual Observation)

最大(起日) max (date)	
	噴煙量(Quantity of plumes) (JMA's scale)
噴煙の高さ(Height of plumes) (m)	-

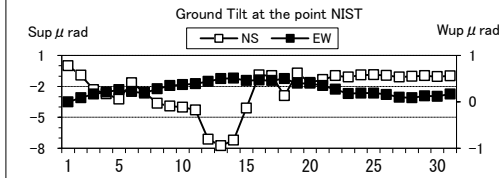
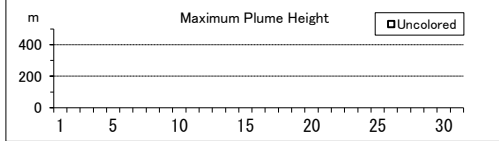
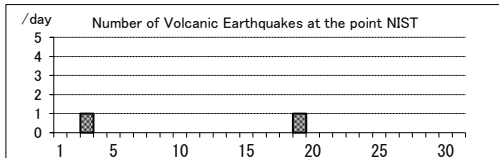
噴煙の色(Color of plumes)	-
他の火山現象(Other volcanic phenomena)	-

Note: Plumes were from Summit Area of Tangoyama(Location A)

Note: Uncolored:Plume color was White(W).

Colored:Plume color was Light white(LW), Grayish white(GW), Gray(G) and other.

Nijima: January,2015



(34)神津島

震動観測(Seismic Observation)

Observation Point: KOTJ	月計	最大(起日)
	total	max (date)
火山性地震回数(Number of volcanic earthquakes)	-	-
火山性微動回数(Number of volcanic tremors)	-	-
微動継続時間(Duration of volcanic tremors) (min.)	-	-

Note: KOTJ (N34°13.24' E139°08.91' H372m)

遠望観測(Visual Observation)

最大(起日) max (date)	
	噴煙量(Quantity of plumes) (JMA's scale)
噴煙の高さ(Height of plumes) (m)	-

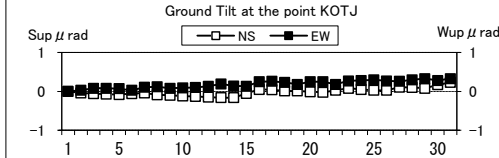
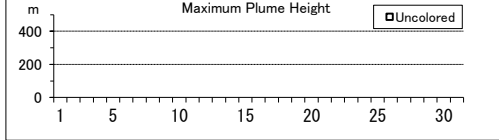
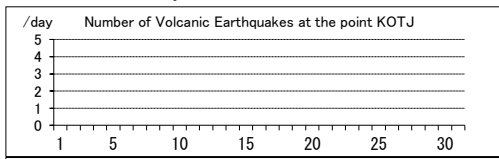
噴煙の色(Color of plumes)	-
他の火山現象(Other volcanic phenomena)	-

Note: Plumes were from Summit Area of Tenosan(Location A)

Note: Uncolored:Plume color was White(W).

Colored:Plume color was Light white(LW), Grayish white(GW), Gray(G) and other.

Kozushima: January,2015



(35)三宅島

震動観測(Seismic Observation)

Observation Point: MJON	月計	最大(起日)
	total	max (date)
火山性地震回数(Number of volcanic earthquakes)	117	12 (26)
火山性微動回数(Number of volcanic tremors)	-	-
微動継続時間(Duration of volcanic tremors) (min.)	-	-

Note: MJON (N34°04.38' E139°30.86' H472m)

遠望観測(Visual Observation)

最大(起日) max (date)	
	噴煙量(Quantity of plumes) (JMA's scale)
噴煙の高さ(Height of plumes) (m)	500 (16)

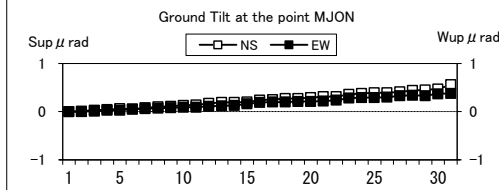
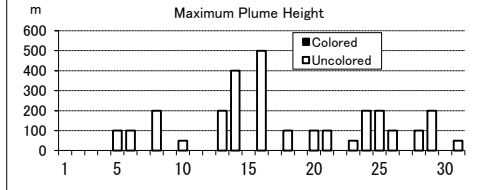
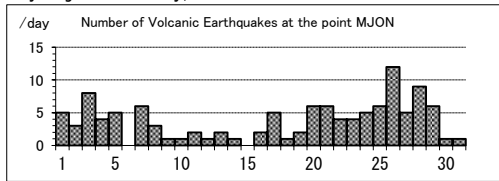
噴煙の色(Color of plumes)	W
他の火山現象(Other volcanic phenomena)	-

Note: Plumes were from the Summit Crater.

Note: Uncolored:Plume color was White(W).

Colored:Plume color was Light white(LW), Grayish white(GW), Gray(G) and other.

Miyakejima: January,2015



(36)八丈島

震動観測(Seismic Observation)

Observation Point: HACHJ3	月計	最大(起日)
	total	max (date)
火山性地震回数(Number of volcanic earthquakes)	-	-
火山性微動回数(Number of volcanic tremors)	-	-
微動継続時間(Duration of volcanic tremors) (min.)	-	-

Note: HACHJ3 (N33 06.92 E139 48.83 H70m)

遠望観測(Visual Observation)

	最大(起日) max (date)
噴煙量(Quantity of plumes) (JMA's scale)	-
噴煙の高さ(Height of plumes) (m)	-

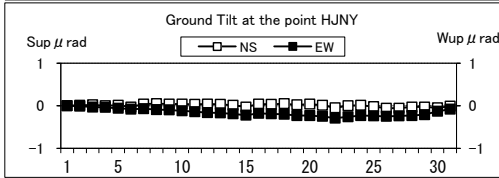
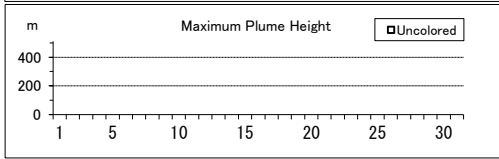
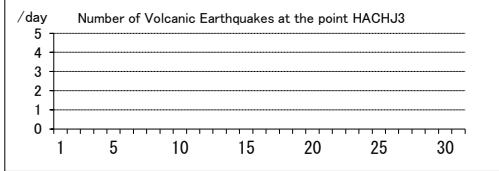
噴煙の色(Color of plumes)	-
他の火山現象(Other volcanic phenomena)	-

Note: Plumes were from Nishiyama Crater(Location A)

Note: Uncolored:Plume color was White(W).

Colored:Plume color was Light white(LW), Grayish white(GW), Gray(G) and other.

Hachijojima: January,2015



(37)青ヶ島

震動観測(Seismic Observation)

Observation Point: AOMT	月計	最大(起日)
	total	max (date)
火山性地震回数(Number of volcanic earthquakes)	-	-
火山性微動回数(Number of volcanic tremors)	-	-
微動継続時間(Duration of volcanic tremors) (min.)	-	-

Note: AOMT (N32'28.02' E139'45.64' H273m)

遠望観測(Visual Observation)

	最大(起日) max (date)
噴煙量(Quantity of plumes) (JMA's scale)	-
噴煙の高さ(Height of plumes) (m)	-

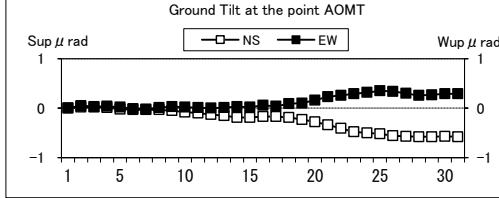
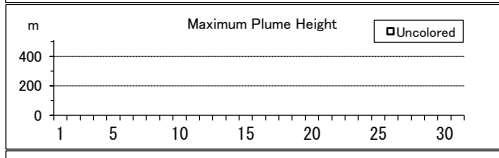
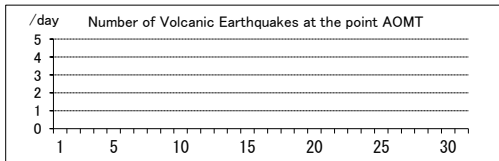
噴煙の色(Color of plumes)	-
他の火山現象(Other volcanic phenomena)	-

Note: Plumes were from Western flank of Maruyama(Location A)

Note: Uncolored:Plume color was White(W).

Colored:Plume color was Light white(LW), Grayish white(GW), Gray(G) and other.

Aogashima: January,2015



(38)硫黄島

震動観測(Seismic Observation)

Observation Point: IOCD	月計	最大(起日)
	total	max (date)
火山性地震回数(Number of volcanic earthquakes)	650	139 (15)
火山性微動回数(Number of volcanic tremors)	16	4 (2,27)
微動継続時間(Duration of volcanic tremors) (min.)	24	7 (26)

Note: IOCD (N24'46.12' E141'18.43' H72m)

遠望観測(Visual Observation)

	最大(起日) max (date)
噴煙量(Quantity of plumes) (JMA's scale)	1 (5)
噴煙の高さ(Height of plumes) (m)	10 (5)

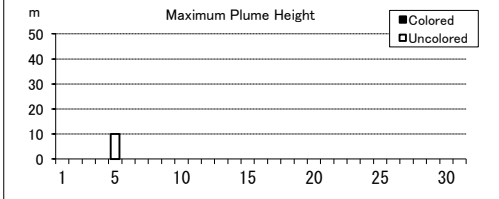
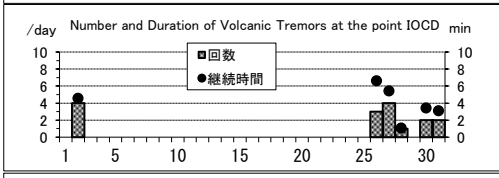
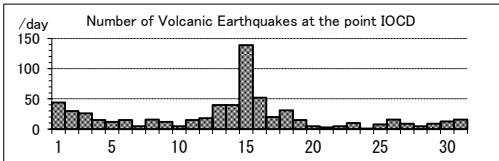
噴煙の色(Color of plumes)	W
他の火山現象(Other volcanic phenomena)	-

Note: Plumes were from Asodaikanbetsuko (Location A)and/or Idogahama (Location B)

Note: Uncolored:Plume color was White(W).

Colored:Plume color was Light white(LW), Grayish white(GW), Gray(G) and other.

Ioto: January,2015



(39) 鶴見岳・伽藍岳

震動観測(Seismic Observation)

	月計 total	最大(起日) max (date)
火山性地震回数(Number of volcanic earthquakes)	6	2 (24)
火山性微動回数(Number of volcanic tremors)	-	-
微動継続時間(Duration of volcanic tremors) (min.)	-	-

Note: TGBP (N33°19.53' E131°27.07' H401m)

遠望観測(Visual Observation)

	最大(起日) max (date)
噴煙量(Quantity of plumes) (JMA's scale)	-
噴煙の高さ(Height of plumes) (m)	-

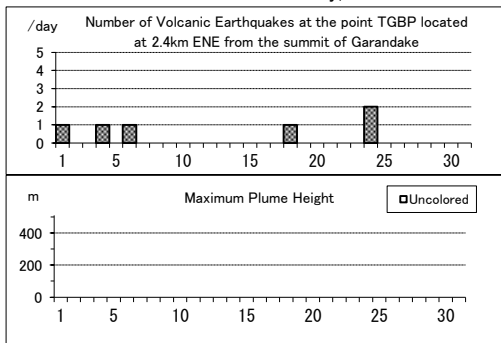
噴煙の色(Color of plumes)	-
他の火山現象(Other volcanic phenomena)	-

Note: Plumes were from RegionA and/or RegionB.

Note: Uncolored:Plume color was White(W).

Colored:Plume color was Light white(LW), Grayish white(GW), Gray(G) and other.

Tsurumidake and Garandake: January,2015



(40) 九重山

震動観測(Seismic Observation)

	月計 total	最大(起日) max (date)
火山性地震回数(Number of volcanic earthquakes)	11	4 (19)
火山性微動回数(Number of volcanic tremors)	-	-
微動継続時間(Duration of volcanic tremors) (min.)	-	-

Note: KJA2 (N33°06.20' E131°13.78' H1282m)

遠望観測(Visual Observation)

	最大(起日) max (date)
噴煙量(Quantity of plumes) (JMA's scale)	1 (abbr.)
噴煙の高さ(Height of plumes) (m)	100 (25)

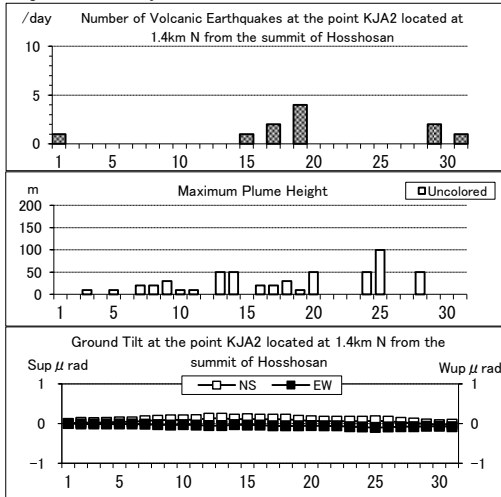
噴煙の色(Color of plumes)	W
他の火山現象(Other volcanic phenomena)	-

Note: Plumes were from the east and/or north-east flank of Mt. Hossho (Location A,B,C or D).

Note: Uncolored:Plume color was White(W).

Colored:Plume color was Light white(LW), Grayish white(GW), Gray(G) and other.

Kujusan: January,2015



(41)阿蘇山

震動観測(Seismic Observation)

Observation Point: ASOA	月計	最大(起日)
	total	max (date)
火山性地震回数(Number of volcanic earthquakes)	1074	135 (28)
孤立型火山性微動回数 (Number of isolated volcanic tremors)	-	-

Note: ASOA (N32°53.15' E131°04.57' H1152m)

遠望観測(Visual Observation)

	最大(起日) max (date)
噴煙量(Quantity of plumes) (JMA's scale)	3 (7,13,20)
噴煙の高さ(Height of plumes) (m)	1300 (13)

噴煙の色(Color of plumes)	LW,GW,G,BkG
他の火山現象(Other volcanic phenomena)	GI,Bm

Note: Plumes were from the Crater No.1 of Mt. Nakadake.

Note: Uncolored:Plume color was White(W).

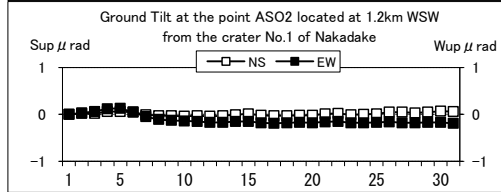
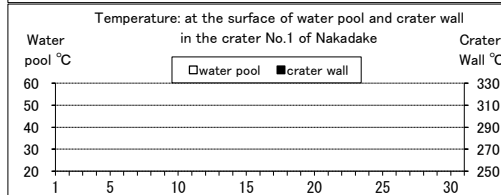
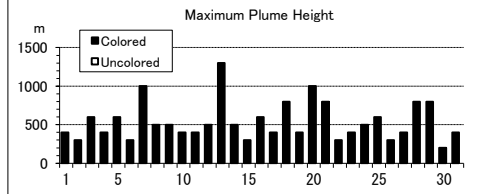
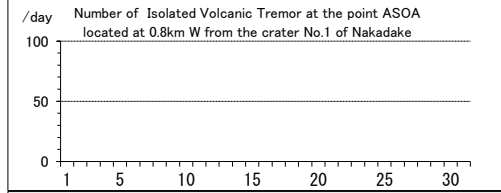
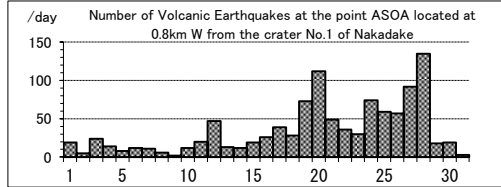
Colored:Plume color was Light white(LW), Grayish white(GW), Gray(G) and other.

現地観測(Field Observation)

	最高(起日) max (date)	最低(起日) min (date)
	火口内の湯だまりの表面温度 (Surface temperature on the water pool in the crater) (°C)	-
火口壁の表面温度 (Surface temperature on the crater wall) (°C)	-	-

Observation Point:the Crater No.1 of Mt. Nakadake

Asosan: January,2015



(42)雲仙岳

震動観測(Seismic Observation)

Observation Point: UNKN	月計	最大(起日)
	total	max (date)
火山性地震回数(Number of volcanic earthquakes)	28	4 (27)
火山性微動回数(Number of volcanic tremors)	-	-
微動継続時間(Duration of volcanic tremors) (min)	-	-

Note: UNKN (N32°46.31' E130°17.31' H833m)

遠望観測(Visual Observation)

	最大(起日) max (date)
噴煙量(Quantity of plumes) (JMA's scale)	1 (31)
噴煙の高さ(Height of plumes) (m)	10 (31)

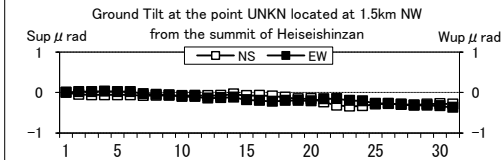
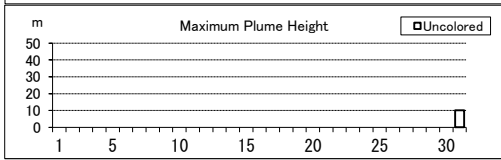
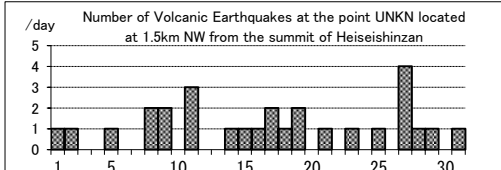
噴煙の色(Color of plumes)	W
他の火山現象(Other volcanic phenomena)	-

Note: Plumes were from the 10th Lava Dome(Location A10) and/or the 11th Lava Dome(A11).

Note: Uncolored:Plume color was White(W).

Colored:Plume color was Light white(LW), Grayish white(GW), Gray(G) and other.

Unzendake: January,2015



(43)霧島山

新燃岳 (Shinmoedake)

震動観測(Seismic Observation)

Observation Point: KIRA	月計 total	最大(起日) max (date)
火山性地震回数(Number of volcanic earthquakes)	23	9 (2)
火山性微動回数(Number of volcanic tremors)	-	-
微動継続時間(Duration of volcanic tremors) (min)	-	-

Note: KIRA (N31°53.89' E130°52.20' H1036m)

遠望観測(Visual Observation)

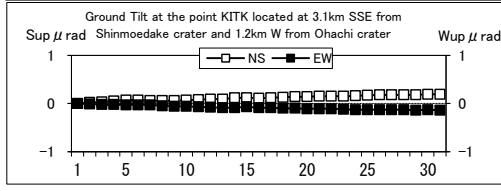
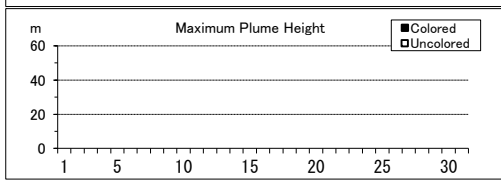
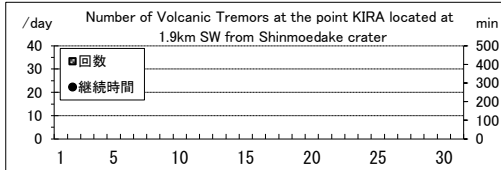
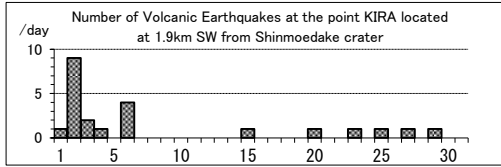
	最大(起日) max (date)
噴煙量(Quantity of plumes) (JMA's scale)	-
噴煙の高さ(Height of plumes) (m)	-
噴煙の色(Color of plumes)	-
他の火山現象(Other volcanic phenomena)	-

Note: Plumes were from the Shinmoedake Crater

Note: Uncolored:Plume color was White(W).

Colored:Plume color was Light white(LW), Grayish white(GW), Gray(G) and other.

Kirishimayama: January,2015



御鉢(Ohachi)

震動観測(Seismic Observation)

Observation Point: KTM2	月計 total	最大(起日) max (date)
火山性地震回数(Number of volcanic earthquakes)	1	1 (11)
火山性微動回数(Number of volcanic tremors)	1	1 (18)
微動継続時間(Duration of volcanic tremors) (min)	1	1 (18)

Note: KTM2 (N31°53.13' E130°55.19' H1544m)

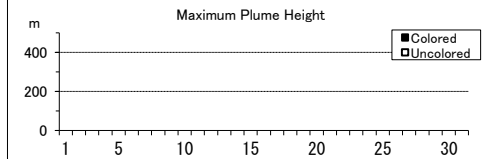
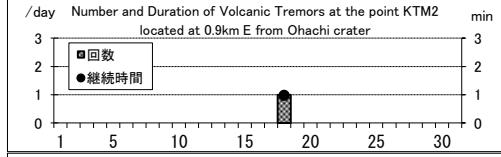
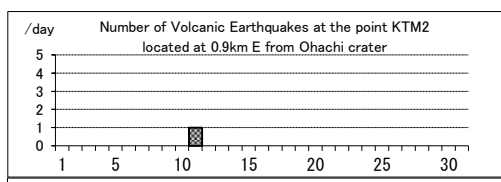
遠望観測(Visual Observation)

	最大(起日) max (date)
噴煙量(Quantity of plumes) (JMA's scale)	-
噴煙の高さ(Height of plumes) (m)	-
噴煙の色(Color of plumes)	-
他の火山現象(Other volcanic phenomena)	-

Note: Plumes were from the Ohachi Crater

Note: Uncolored:Plume color was White(W).

Colored:Plume color was Light white(LW), Grayish white(GW), Gray(G) and other.



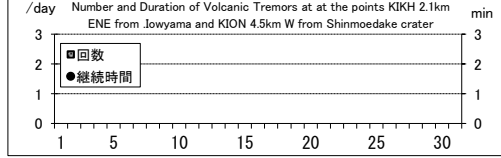
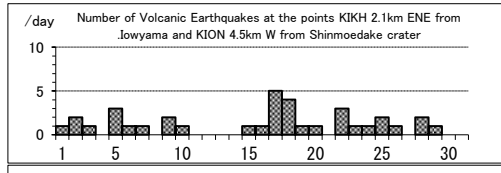
えびの高原(硫黄山)周辺(Ebino Highland Ioyama)

震動観測(Seismic Observation)

Observation Point: KIKH, KION	月計 total	最大(起日) max (date)
火山性地震回数(Number of volcanic earthquakes)	36	5 (17)
火山性微動回数(Number of volcanic tremors)	-	-
微動継続時間(Duration of volcanic tremors) (min)	-	-

Note: KIKH(N31°57.20' E130°52.52' H969m)

KION(N31°54.68' E130°50.11' H982m)





(44)桜島

震動観測(Seismic Observation)

Observation Point: SKRB	月計	最大(起日)
	total	max (date)
火山性地震回数(Number of volcanic earthquakes)	873	66 (26)
火山性微動回数(Number of volcanic tremors)	239	29 (6)
微動継続時間(Duration of volcanic tremors) (min)	2935	876 (1)

Note: SKRB (N31°35.58' E130°38.33' H451m)

遠望観測(Visual Observation)

	月計	最大(起日)
	total	max (date)
爆発回数(Number of explosive eruptions)	61	9 (3,4)
降灰量(Amount of ash fall) (g/m <sup>2</sup> )	16	7 (29)

A,B火口 (A,B crater)	最大(起日) max (date)
噴煙量(Quantity of plumes) (JMA's scale)	2 (1,16,20)
噴煙の高さ(Height of plumes) (m)	400 (1)

昭 and 火口 (Showa crater)	最大(起日) max (date)
噴煙量(Quantity of plumes) (JMA's scale)	4 (abbr.)
噴煙の高さ(Height of plumes) (m)	4000 (23)

噴煙の色(Color of plumes)	W,LW,GW
他の火山現象(Other volcanic phenomena)	GI,AS,VL,Bm,AF,Xp

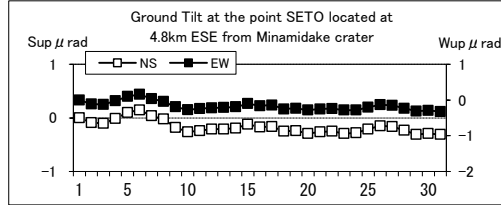
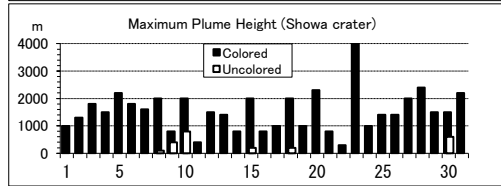
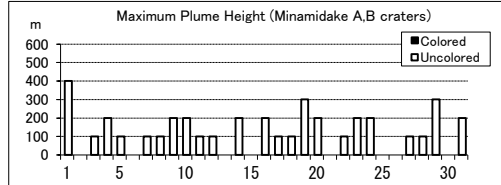
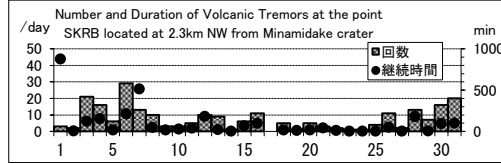
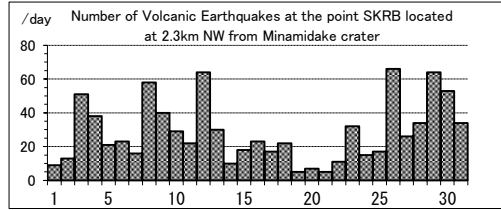
Note: Plumes were from Mt. Minamidake A Crater(A), B Crater(B) and Showa Crater(S)

Note: Uncolored:Plume color was White(W).

Colored:Plume color was Light white(LW), Grayish white(GW), Gray(G) and other.

Visual observation of explosion is described on another sheet.

Sakurajima: January,2015



(45)薩摩硫黄島

震動観測(Seismic Observation)

Observation Point: STI1	月計	最大(起日)
	total	max (date)
火山性地震回数(Number of volcanic earthquakes)	139	8 (17,20,29)
火山性微動回数(Number of volcanic tremors)	-	-
微動継続時間(Duration of volcanic tremors) (min.)	-	-

Note: STI1 (N30°47.27' E130°18.12' H394m)

遠望観測(Visual Observation)	最大(起日) max (date)
噴煙量(Quantity of plumes) (JMA's scale)	2 (4,16)
噴煙の高さ(Height of plumes) (m)	400 (4,16)

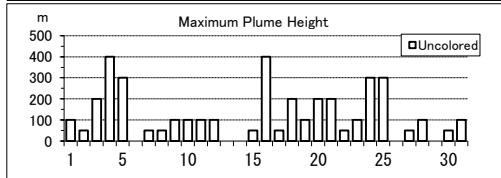
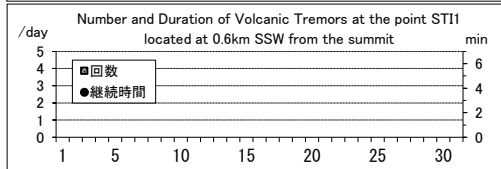
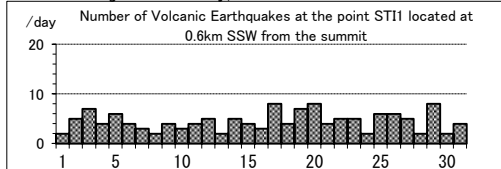
噴煙の色(Color of plumes)	W
他の火山現象(Other volcanic phenomena)	GI

Note: Uncolored:Plume color was White(W)\*.

Colored:Plume color was Light white(LW), Grayish white(GW), Gray(G) and other.

\*Uncolored plumes mean only White(W) color since 1st April, 2010.

Satsuma-Iojima: January,2015



(46)口永良部島

震動観測(Seismic Observation)

Observation Point: KEHT	月計 total	最大(起日) max (date)
火山性地震回数(Number of volcanic earthquakes)	35	18 (24)
火山性微動回数(Number of volcanic tremors)	-	-
微動継続時間(Duration of volcanic tremors) (min.)	-	-

Note: KEHT (N30 27.66' E130 13.89' H231m)

遠望観測(Visual Observation)

	最大(起日) max (date)
噴煙量(Quantity of plumes) (JMA's scale)	2 (5,16,21)
噴煙の高さ(Height of plumes) (m)	500 (5,16,18)

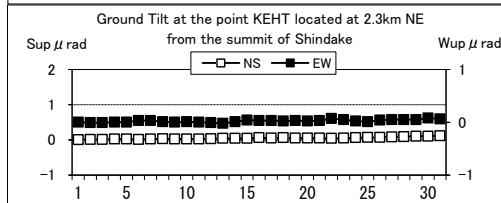
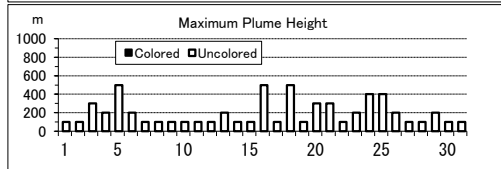
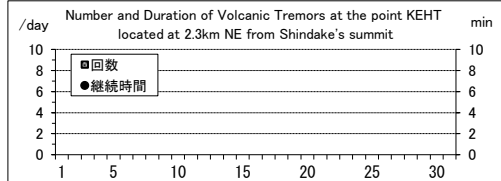
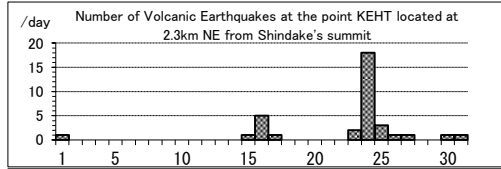
噴煙の色(Color of plumes)	W
他の火山現象(Other volcanic phenomena)	-

Note: Uncolored:Plume color was White(W)\*.

Colored:Plume color was Light white(LW), Grayish white(GW), Gray(G) and other.

\*Uncolored plumes mean only White(W) color since 1st April, 2010.

Kuchinoerabujima: January,2015



(47)諏訪之瀬島

震動観測(Seismic Observation)

Observation Point: SWA1	月計 total	最大(起日) max (date)
火山性地震回数(Number of volcanic earthquakes)	134	19 (5,15)
火山性微動回数(Number of volcanic tremors)	114	21 (26)
微動継続時間(Duration of volcanic tremors) (min.)	8758	1440 (14,15,16)

Note: SWA1 (N29 37.64' E129 42.38' H440m)

\* Continuous volcanic tremors occurred intermittently in this month.

遠望観測(Visual Observation)

	月計 total	最大(起日) max (date)
爆発回数(Number of explosive eruptions)	4	2 (5)

	最大(起日) max (date)
噴煙量(Quantity of plumes) (JMA's scale)	3 (5)
噴煙の高さ(Height of plumes) (m)	1000 (5)

噴煙の色(Color of plumes)	W,LW,GW
他の火山現象(Other volcanic phenomena)	GI

Note: Uncolored:Plume color was White(W)\*

Colored:Plume color was Light white(LW), Grayish white(GW), Gray(G) and other.

\*Uncolored plumes mean only White(W) color since 1st April, 2010.

Suwanosejima: January,2015

