

# 火山観測 Summary of Observations on Volcanoes

## 常時観測 平成26年(2014年)5月

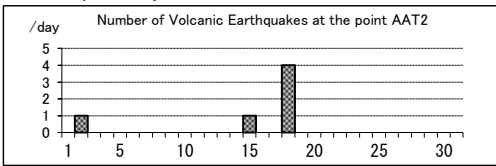
### Continuous Observation in May,2014

#### (1)アトサヌプリ

| 震動観測(Seismic Observation)                   | 月計 total | 最大(起日) max (date) |
|---|----------|-------------------|
| Observation Point: AAT2                     |          |                   |
| 火山性地震回数(Number of volcanic earthquakes)     | 6        | 4 (18)            |
| 火山性微動回数(Number of volcanic tremors)         | -        | -                 |
| 微動継続時間(Duration of volcanic tremors) (min.) | -        | -                 |

Note: AAT2 (N43°37.11' E144°27.01' H156m)

#### Atosanupuri: May,2014



| 遠望観測(Visual Observation)              | 最大(起日) max (date) |
|---------------------------------------|-------------------|
| 噴煙量(Quantity of plumes) (JMA's scale) | 1 (abbr.)         |
| 噴煙の高さ(Height of plumes) (m)           | 100 (4,6)         |

|                                  |   |
|----------------------------------|---|
| 噴煙の色(Color of plumes)            | W |
| 他の火山現象(Other volcanic phenomena) | - |

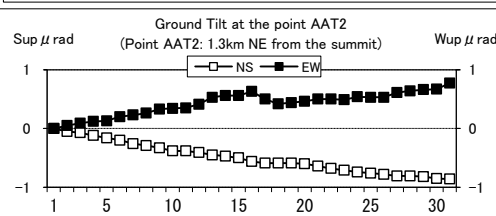
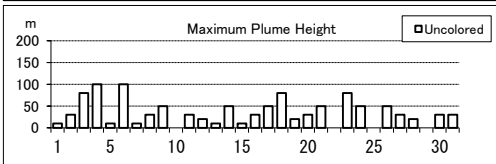
Note: Plumes were from Upper part of F1 Fumaroles(Location U),

Middle part of F1 Fumaroles(M) Lower part of

F1 Fumaroles(L) and/or F2 Fumaroles(F)

Note: Uncolored:Plume color was White(W).

Colored:Plume color was Light white(LW), Grayish white(GW), Gray(G) and other.

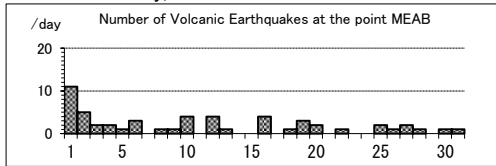


#### (2)雌阿寒岳

| 震動観測(Seismic Observation)                   | 月計 total | 最大(起日) max (date) |
|---|----------|-------------------|
| Observation Point: MEAB                     |          |                   |
| 火山性地震回数(Number of volcanic earthquakes)     | 54       | 11 (1)            |
| 火山性微動回数(Number of volcanic tremors)         | -        | -                 |
| 微動継続時間(Duration of volcanic tremors) (min.) | -        | -                 |

Note: MEAB (N43°22.78' E143°58.65' H680m)

#### Meakandake: May,2014



| 遠望観測(Visual Observation)              | 最大(起日) max (date) |
|---------------------------------------|-------------------|
| 噴煙量(Quantity of plumes) (JMA's scale) | 1 (abbr.)         |
| 噴煙の高さ(Height of plumes) (m)           | 100 (4,6,20)      |

|                                  |   |
|----------------------------------|---|
| 噴煙の色(Color of plumes)            | W |
| 他の火山現象(Other volcanic phenomena) | - |

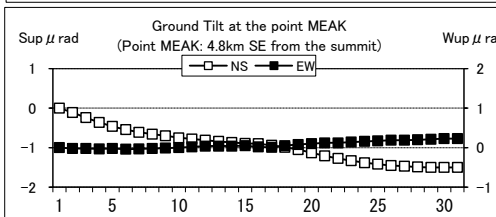
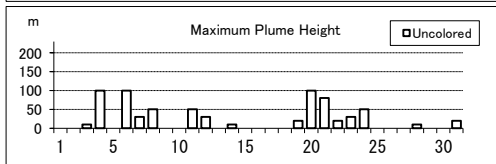
Note: Plumes were from the Pommachineshiri Summit Crater(Location T),

the Nakamachineshiri Crater(U), the Akanuma Crater(M) and/or

Pommachineshiri NW Fumaroles(N).

Note: Uncolored:Plume color was White(W).

Colored:Plume color was Light white(LW), Grayish white(GW), Gray(G) and other.

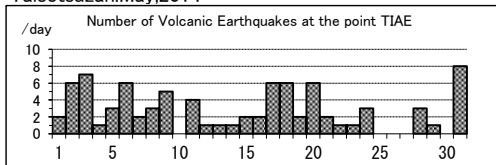


#### (3)大雪山

| 震動観測(Seismic Observation)                   | 月計 total | 最大(起日) max (date) |
|---|----------|-------------------|
| Observation Point: TIAE                     |          |                   |
| 火山性地震回数(Number of volcanic earthquakes)     | 85       | 8 (31)            |
| 火山性微動回数(Number of volcanic tremors)         | -        | -                 |
| 微動継続時間(Duration of volcanic tremors) (min.) | -        | -                 |

Note: TIAE (N43°39.66' E142°49.62' H1607m)

#### Taisetsuzan:May,2014



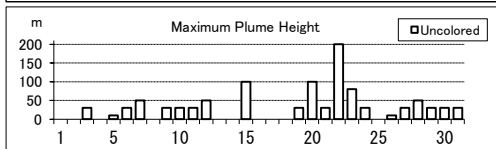
| 遠望観測(Visual Observation)              | 最大(起日) max (date) |
|---------------------------------------|-------------------|
| 噴煙量(Quantity of plumes) (JMA's scale) | 1 (abbr.)         |
| 噴煙の高さ(Height of plumes) (m)           | 200 (22)          |

|                                  |   |
|----------------------------------|---|
| 噴煙の色(Color of plumes)            | W |
| 他の火山現象(Other volcanic phenomena) | - |

Note: Plumes were from 1 Fumaroles(Location I)

Note: Uncolored:Plume color was White(W).

Colored:Plume color was Light white(LW), Grayish white(GW), Gray(G) and other.



(4)十勝岳

震動観測(Seismic Observation)

| Observation Point: TOKH                     | 月計    | 最大(起日)     |
|---|-------|------------|
|   | total | max (date) |
| 火山性地震回数(Number of volcanic earthquakes)     | 35    | 7 (11)     |
| 火山性微動回数(Number of volcanic tremors)         | -     | -          |
| 微動継続時間(Duration of volcanic tremors) (min.) | -     | -          |

Note: TOKH (N43°25.96' E142°40.15' H1,355m)

遠望観測(Visual Observation)

| 最大(起日) max (date)           |                                       |
|-----------------------------|---------------------------------------|
|                             | 噴煙量(Quantity of plumes) (JMA's scale) |
| 噴煙の高さ(Height of plumes) (m) | 80 (6)                                |

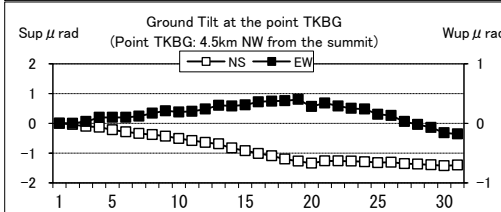
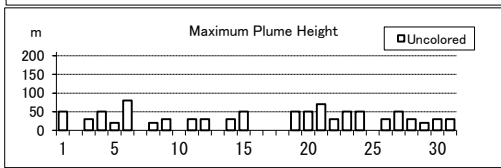
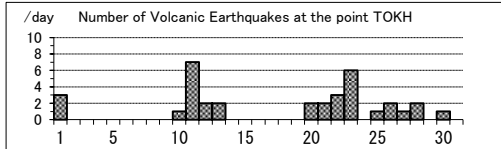
|                                  |   |
|----------------------------------|---|
| 噴煙の色(Color of plumes)            | W |
| 他の火山現象(Other volcanic phenomena) | - |

Note: Plumes were from the Taisho Crater(Location x), the 62 crater Area(P,Q,Y),the Furikozawa Fumaroles (F) and/or the Kyufun Crater (Z).

Note: Uncolored:Plume color was White(W).

Colored:Plume color was Light white(LW), Grayish white(GW), Gray(G) and other.

Tokachidake: May,2014



(5)樽前山

震動観測(Seismic Observation)

| Observation Point: TARC                     | 月計    | 最大(起日)     |
|---|-------|------------|
|   | total | max (date) |
| 火山性地震回数(Number of volcanic earthquakes)     | 96    | 8 (29)     |
| 火山性微動回数(Number of volcanic tremors)         | -     | -          |
| 微動継続時間(Duration of volcanic tremors) (min.) | -     | -          |

Note: TARC (N42°42.23' E141°22.64' H638m)

遠望観測(Visual Observation)

| 最大(起日) max (date)           |                                       |
|-----------------------------|---------------------------------------|
|                             | 噴煙量(Quantity of plumes) (JMA's scale) |
| 噴煙の高さ(Height of plumes) (m) | 30 (abbr.)                            |

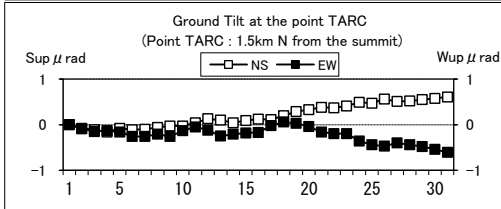
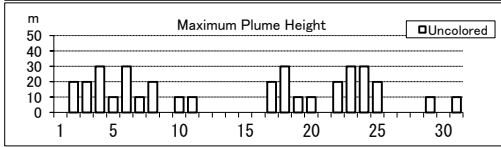
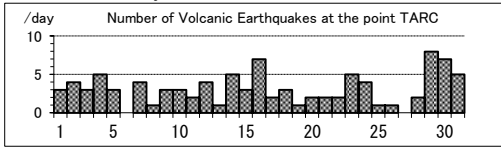
|                                  |   |
|----------------------------------|---|
| 噴煙の色(Color of plumes)            | W |
| 他の火山現象(Other volcanic phenomena) | - |

Note: Plumes were from the Summit Area(Location A, B and/or E).

Note: Uncolored:Plume color was White(W).

Colored:Plume color was Light white(LW), Grayish white(GW), Gray(G) and other.

Tarumasan: May,2014



(6)倶多楽

震動観測(Seismic Observation)

| Observation Point: KUJG                     | 月計    | 最大(起日)     |
|---|-------|------------|
|   | total | max (date) |
| 火山性地震回数(Number of volcanic earthquakes)     | -     | -          |
| 火山性微動回数(Number of volcanic tremors)         | -     | -          |
| 微動継続時間(Duration of volcanic tremors) (min.) | -     | -          |

Note: KUJG (N42°29.50' E141°07.68' H327m)

遠望観測(Visual Observation)

| 最大(起日) max (date)           |                                       |
|-----------------------------|---------------------------------------|
|                             | 噴煙量(Quantity of plumes) (JMA's scale) |
| 噴煙の高さ(Height of plumes) (m) | 30 (abbr.)                            |

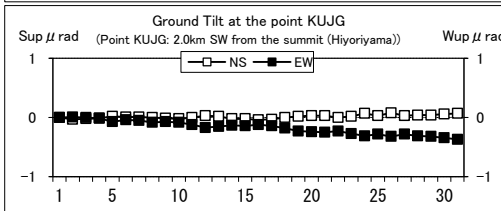
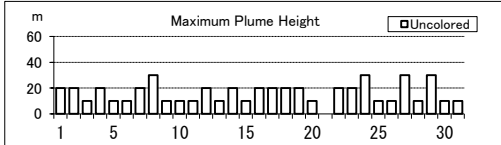
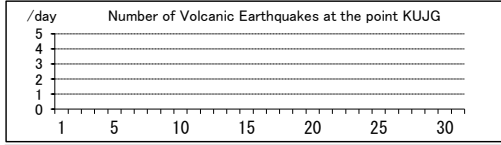
|                                  |   |
|----------------------------------|---|
| 噴煙の色(Color of plumes)            | W |
| 他の火山現象(Other volcanic phenomena) | - |

Note: Plumes were from Hioryiyama Fumarole(Location H)

Note: Uncolored:Plume color was White(W).

Colored:Plume color was Light white(LW), Grayish white(GW), Gray(G) and other.

Kuttara: May,2014



(7)有珠山

震動観測(Seismic Observation)

| Observation Point: USUA                     | 月計    | 最大(起日)     |
|---|-------|------------|
|   | total | max (date) |
| 火山性地震回数(Number of volcanic earthquakes)     | 23    | 3 (3,27)   |
| 火山性微動回数(Number of volcanic tremors)         | -     | -          |
| 微動継続時間(Duration of volcanic tremors) (min.) | -     | -          |

Note: USUA (N42°31.70' E140°50.17' H246m)

遠望観測(Visual Observation)

| 最大(起日) max (date)           |                                       |
|-----------------------------|---------------------------------------|
|                             | 噴煙量(Quantity of plumes) (JMA's scale) |
| 噴煙の高さ(Height of plumes) (m) | 100 (23)                              |

|                                  |   |
|----------------------------------|---|
| 噴煙の色(Color of plumes)            | W |
| 他の火山現象(Other volcanic phenomena) | - |

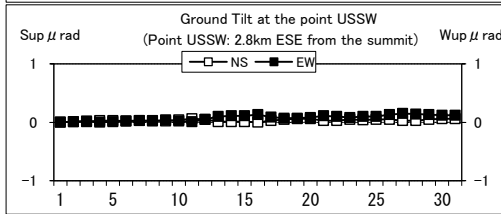
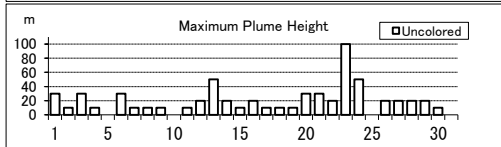
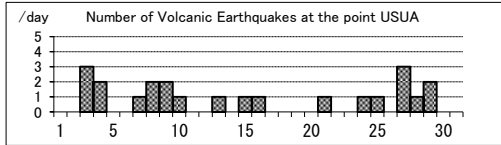
Note: Plumes were from the Summit Area of Usuzan(Location P) ,

Mt.showa-shinzan(Z), Nishi-yama vent group(N) and Konpira-yama vent group(K).

Note: Uncolored:Plume color was White(W).

Colored:Plume color was Light white(LW), Grayish white(GW), Gray(G) and other.

Usuzan: May,2014



(8)北海道駒ヶ岳

震動観測(Seismic Observation)

| Observation Point: KOMA                     | 月計    | 最大(起日)     |
|---|-------|------------|
|   | total | max (date) |
| 火山性地震回数(Number of volcanic earthquakes)     | -     | -          |
| 火山性微動回数(Number of volcanic tremors)         | -     | -          |
| 微動継続時間(Duration of volcanic tremors) (min.) | -     | -          |

Note: KOMA (N42°03.19' E140°38.29' H265m)

遠望観測(Visual Observation)

| 最大(起日) max (date)           |                                       |
|-----------------------------|---------------------------------------|
|                             | 噴煙量(Quantity of plumes) (JMA's scale) |
| 噴煙の高さ(Height of plumes) (m) | -                                     |

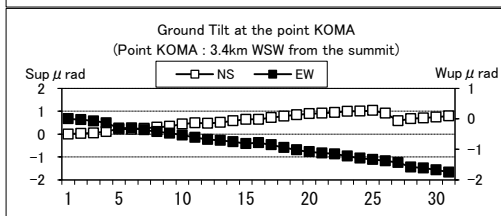
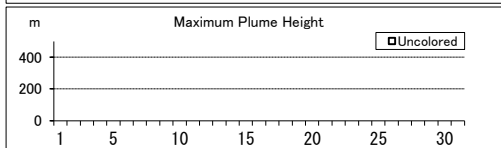
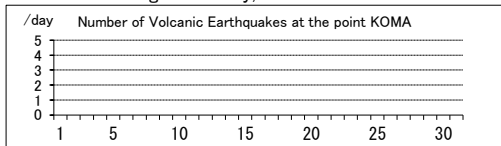
|                                  |   |
|----------------------------------|---|
| 噴煙の色(Color of plumes)            | - |
| 他の火山現象(Other volcanic phenomena) | - |

Note: Plumes were from the Showa-4 Crater(Location D1) and/or the 96 South Crater(D2).

Note: Uncolored:Plume color was White(W).

Colored:Plume color was Light white(LW), Grayish white(GW), Gray(G) and other.

Hokkaido-Komagatake: May,2014



(9)恵山

震動観測(Seismic Observation)

| Observation Point: ESDK                     | 月計    | 最大(起日)     |
|---|-------|------------|
|   | total | max (date) |
| 火山性地震回数(Number of volcanic earthquakes)     | 5     | 1 (abbr.)  |
| 火山性微動回数(Number of volcanic tremors)         | -     | -          |
| 微動継続時間(Duration of volcanic tremors) (min.) | -     | -          |

Note: ESDK (N41°48.69' E141°09.73' H369m)

遠望観測(Visual Observation)

| 最大(起日) max (date)           |                                       |
|-----------------------------|---------------------------------------|
|                             | 噴煙量(Quantity of plumes) (JMA's scale) |
| 噴煙の高さ(Height of plumes) (m) | 30 (18,22,23)                         |

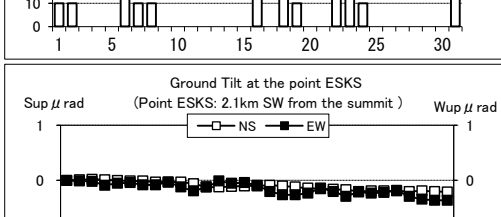
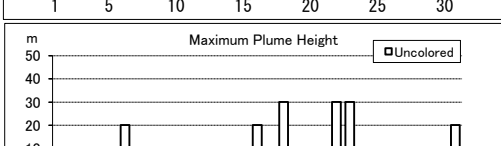
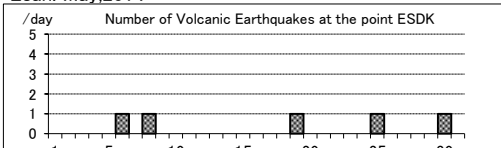
|                                  |   |
|----------------------------------|---|
| 噴煙の色(Color of plumes)            | W |
| 他の火山現象(Other volcanic phenomena) | - |

Note: Plumes were from X Crater(Location x), Y Crater(Y)

Note: Uncolored:Plume color was White(W).

Colored:Plume color was Light white(LW), Grayish white(GW), Gray(G) and other.

Esan: May,2014



(10)岩木山

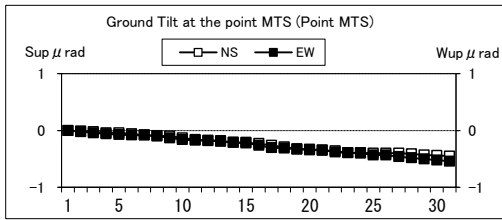
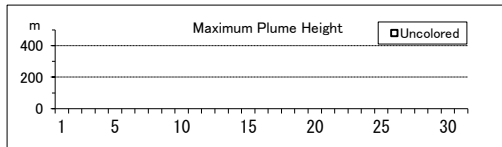
| 遠望観測(Visual Observation)              |   | 最大(起日) max (date) |
|---------------------------------------|---|-------------------|
| 噴煙量(Quantity of plumes) (JMA's scale) | - |                   |
| 噴煙の高さ(Height of plumes) (m)           | - |                   |
|                                       |   |                   |
| 噴煙の色(Color of plumes)                 | - |                   |
| 他の火山現象(Other volcanic phenomena)      | - |                   |

Note: Plumes were from Iwaki Summit

Note: Uncolored:Plume color was White(W).

Colored:Plume color was Light white(LW), Grayish white(GW), Gray(G) and other.

Iwakisan: May.2014

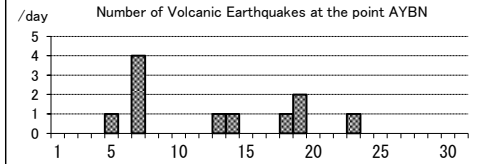


(11)秋田焼山

| 震動観測(Seismic Observation)                   |    | 月計 total | 最大(起日) max (date) |
|---|----|----------|-------------------|
| Observation Point: AYBN                     |    |          |                   |
| 火山性地震回数(Number of volcanic earthquakes)     | 11 | 4 (7)    |                   |
| 火山性微動回数(Number of volcanic tremors)         | -  | -        |                   |
| 微動継続時間(Duration of volcanic tremors) (min.) | -  | -        |                   |

Note: AYBN (N39°56.72' E140°43.17' H738m)

Akita-Yakeyama : May.2014



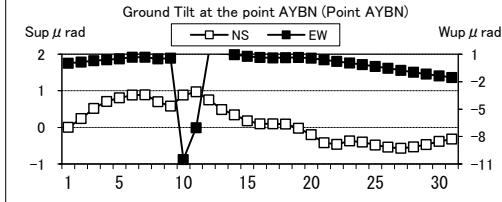
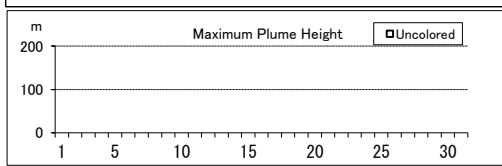
| 遠望観測(Visual Observation)              |   | 最大(起日) max (date) |
|---------------------------------------|---|-------------------|
| 噴煙量(Quantity of plumes) (JMA's scale) | - |                   |
| 噴煙の高さ(Height of plumes) (m)           | - |                   |

|                                  |   |
|----------------------------------|---|
| 噴煙の色(Color of plumes)            | - |
| 他の火山現象(Other volcanic phenomena) | - |

Note: Plumes were from Yakeyama Summit

Note: Uncolored:Plume color was White(W).

Colored:Plume color was Light white(LW), Grayish white(GW), Gray(G) and other.

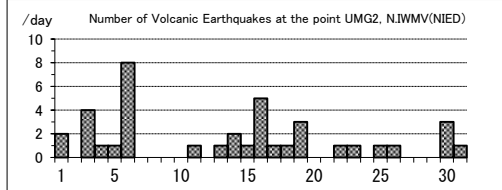


(12)岩手山

| 震動観測(Seismic Observation)                   |    | 月計 total | 最大(起日) max (date) |
|---|----|----------|-------------------|
| Observation Point: UMG2, N.IWMV(NIED)       |    |          |                   |
| 火山性地震回数(Number of volcanic earthquakes)     | 39 | 8 (6)    |                   |
| 火山性微動回数(Number of volcanic tremors)         | -  | -        |                   |
| 微動継続時間(Duration of volcanic tremors) (min.) | -  | -        |                   |

Note:UMG2 (N39°49.94' E141°02.45' H609m), N.IWMV(NIED) (N39°53.01' E140°56.14' H804m)

Iwatesan: May.2014



| 遠望観測(Visual Observation)              |        | 最大(起日) max (date) |
|---------------------------------------|--------|-------------------|
| 噴煙量(Quantity of plumes) (JMA's scale) | 1 (4)  |                   |
| 噴煙の高さ(Height of plumes) (m)           | 10 (4) |                   |

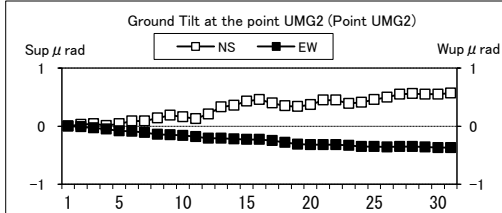
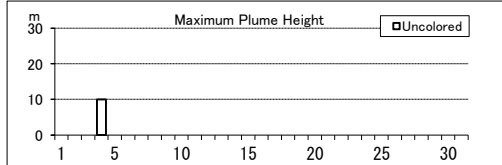
|                                  |   |
|----------------------------------|---|
| 噴煙の色(Color of plumes)            | W |
| 他の火山現象(Other volcanic phenomena) | - |

Note: Plumes were from the Kurokurayama Summit(Location x), the Ojigokudani(Y-6)

Note: Uncolored:Plume color was White(W).\*

Colored:Plume color was Light white(LW), Grayish white(GW), Gray(G) and other.

\*Uncolored plumes mean only White(W) color since 1st April, 2010.



(13)秋田駒ヶ岳

震動観測(Seismic Observation)

| Observation Point: AKHC                     | 月計    | 最大(起日)     |
|---|-------|------------|
|   | total | max (date) |
| 火山性地震回数(Number of volcanic earthquakes)     | 6     | 2 (24)     |
| 火山性微動回数(Number of volcanic tremors)         | -     | -          |
| 微動継続時間(Duration of volcanic tremors) (min.) | -     | -          |

Note: AKHC (N39°46.08' E140°48.41' H1304m)

遠望観測(Visual Observation)

|                                       | 最大(起日) max (date) |
|---------------------------------------|-------------------|
| 噴煙量(Quantity of plumes) (JMA's scale) | 1 (1)             |
| 噴煙の高さ(Height of plumes) (m)           | 20 (1)            |

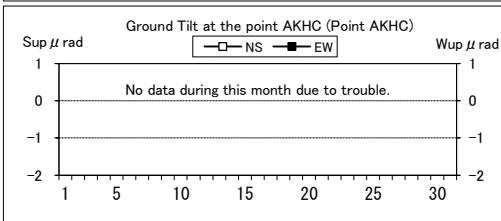
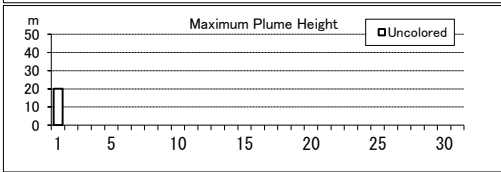
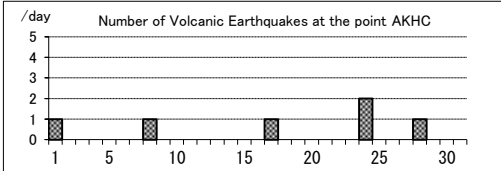
|                                  |   |
|----------------------------------|---|
| 噴煙の色(Color of plumes)            | W |
| 他の火山現象(Other volcanic phenomena) | - |

Note: Plumes were from Medake Summit(Location Z-1a), Geothermal area on the N part of Medake Summit(Z-1b), W part of Medake Summit(Z-1c), Geothermal area on the NE slope of Medake Summit(Z-1d) and/or Crater on the E part of Medake Summit(Z-1e)

Note: Uncolored:Plume color was White(W).

Colored:Plume color was Light white(LW), Grayish white(GW), Gray(G) and other.

Akita-Komagatake: May,2014



(14)鳥海山

震動観測(Seismic Observation)

| Observation Point: CHKN                     | 月計    | 最大(起日)     |
|---|-------|------------|
|   | total | max (date) |
| 火山性地震回数(Number of volcanic earthquakes)     | -     | -          |
| 火山性微動回数(Number of volcanic tremors)         | -     | -          |
| 微動継続時間(Duration of volcanic tremors) (min.) | -     | -          |

Note: CHKN (N39°07.75' E139°56.36' H335m)

遠望観測(Visual Observation)

|                                       | 最大(起日) max (date) |
|---------------------------------------|-------------------|
| 噴煙量(Quantity of plumes) (JMA's scale) | -                 |
| 噴煙の高さ(Height of plumes) (m)           | -                 |

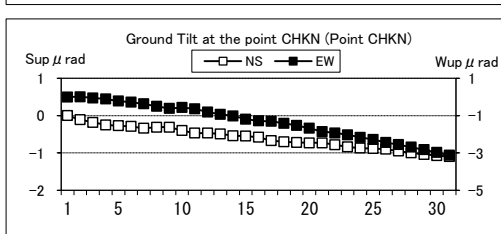
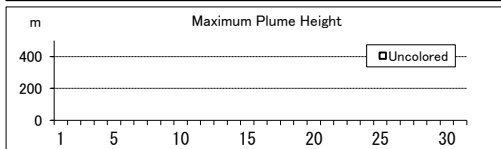
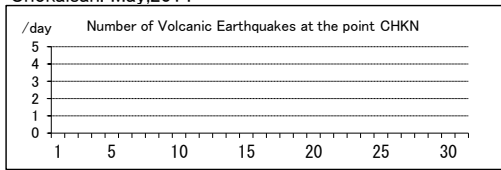
|                                  |   |
|----------------------------------|---|
| 噴煙の色(Color of plumes)            | - |
| 他の火山現象(Other volcanic phenomena) | - |

Note: Plumes were from Shin Summit(Location Y)

Note: Uncolored:Plume color was White(W).

Colored:Plume color was Light white(LW), Grayish white(GW), Gray(G) and other.

Chokaisan: May,2014



(15)栗駒山

震動観測(Seismic Observation)

| Observation Point: KRK2                     | 月計    | 最大(起日)     |
|---|-------|------------|
|   | total | max (date) |
| 火山性地震回数(Number of volcanic earthquakes)     | -     | -          |
| 火山性微動回数(Number of volcanic tremors)         | -     | -          |
| 微動継続時間(Duration of volcanic tremors) (min.) | -     | -          |

Note: KRK2 (N38°56.45' E140°49.08' H840m)

遠望観測(Visual Observation)

|                                       | 最大(起日) max (date) |
|---------------------------------------|-------------------|
| 噴煙量(Quantity of plumes) (JMA's scale) | -                 |
| 噴煙の高さ(Height of plumes) (m)           | -                 |

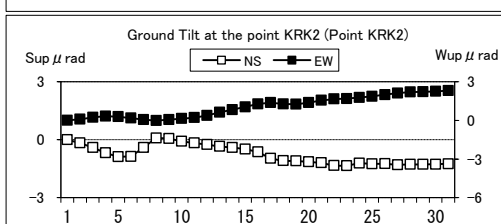
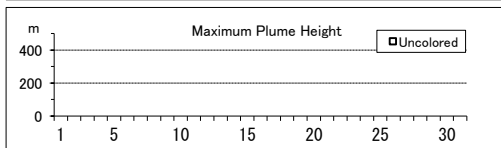
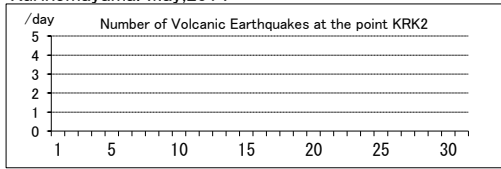
|                                  |   |
|----------------------------------|---|
| 噴煙の色(Color of plumes)            | - |
| 他の火山現象(Other volcanic phenomena) | - |

Note: Plumes were from Showa Lake(Location Z-1),Old Crater (W-1)

Note: Uncolored:Plume color was White(W).

Colored:Plume color was Light white(LW), Grayish white(GW), Gray(G) and other.

Kurikomayama: May,2014



(16)蔵王山

震動観測(Seismic Observation)

| Observation Point: ZABD                     | 月計    | 最大(起日)     |
|---|-------|------------|
|   | total | max (date) |
| 火山性地震回数(Number of volcanic earthquakes)     | 2     | 1 (11.14)  |
| 火山性微動回数(Number of volcanic tremors)         | -     | -          |
| 微動継続時間(Duration of volcanic tremors) (min.) | -     | -          |

Note: ZABD (N38°07.33' E140°23.69' H1,012m)

遠望観測(Visual Observation)

|                                       | 最大(起日) max (date) |
|---------------------------------------|-------------------|
| 噴煙量(Quantity of plumes) (JMA's scale) | -                 |
| 噴煙の高さ(Height of plumes) (m)           | -                 |

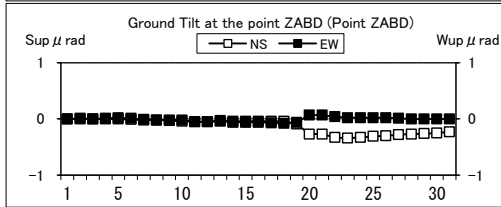
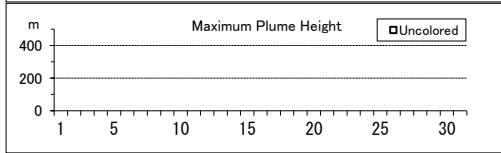
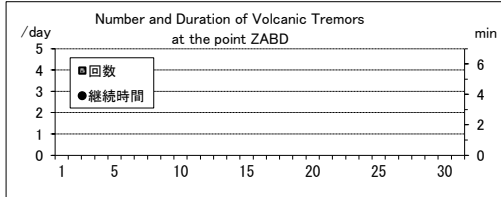
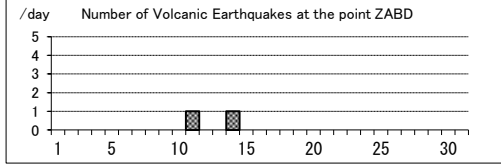
|                                  |   |
|----------------------------------|---|
| 噴煙の色(Color of plumes)            | - |
| 他の火山現象(Other volcanic phenomena) | - |

Note: Plumes were from Okama(Location S-1b),Maruyamasawa(Y-2a)

Note: Uncolored:Plume color was White(W).

Colored:Plume color was Light white(LW), Grayish white(GW), Gray(G) and other.

Zaozan: May,2014



(17)吾妻山

震動観測(Seismic Observation)

| Observation Point: AZMA                     | 月計    | 最大(起日)     |
|---|-------|------------|
|   | total | max (date) |
| 火山性地震回数(Number of volcanic earthquakes)     | 17    | 5 (12)     |
| 火山性微動回数(Number of volcanic tremors)         | -     | -          |
| 微動継続時間(Duration of volcanic tremors) (min.) | -     | -          |

Note: AZMA (N37°43.34' E140°16.53' H1,295m)

遠望観測(Visual Observation)

|                                       | 最大(起日) max (date) |
|---------------------------------------|-------------------|
| 噴煙量(Quantity of plumes) (JMA's scale) | 1 (abbr.)         |
| 噴煙の高さ(Height of plumes) (m)           | 70 (4.20,23)      |

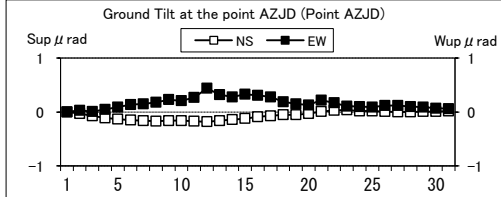
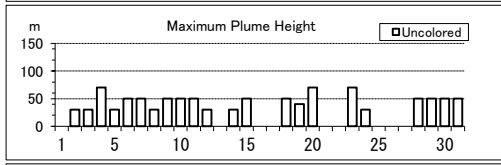
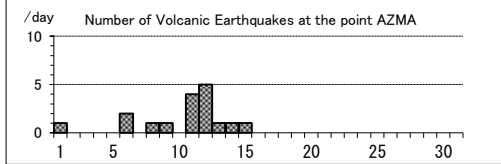
|                                  |   |
|----------------------------------|---|
| 噴煙の色(Color of plumes)            | W |
| 他の火山現象(Other volcanic phenomena) | - |

Note: Plumes were from the Oana Crater

Note: Uncolored:Plume color was White(W).

Colored:Plume color was Light white(LW), Grayish white(GW), Gray(G) and other.

Azumayama: May,2014



(18)安達太良山

震動観測(Seismic Observation)

| Observation Point: ADTB                     | 月計    | 最大(起日)     |
|---|-------|------------|
|   | total | max (date) |
| 火山性地震回数(Number of volcanic earthquakes)     | 2     | 1 (2.27)   |
| 火山性微動回数(Number of volcanic tremors)         | -     | -          |
| 微動継続時間(Duration of volcanic tremors) (min.) | -     | -          |

Note: ADTB(N37°38.05' E140°18.21' H1,320m)

遠望観測(Visual Observation)

|                                       | 最大(起日) max (date) |
|---------------------------------------|-------------------|
| 噴煙量(Quantity of plumes) (JMA's scale) | -                 |
| 噴煙の高さ(Height of plumes) (m)           | -                 |

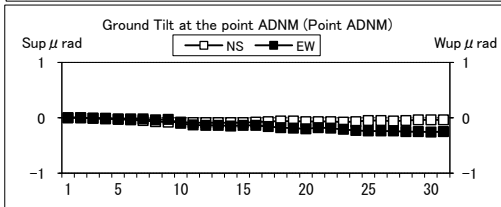
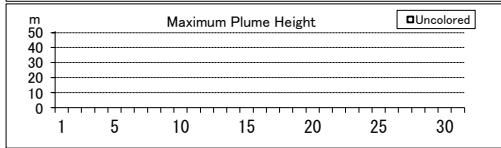
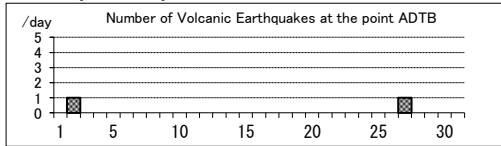
|                                  |   |
|----------------------------------|---|
| 噴煙の色(Color of plumes)            | - |
| 他の火山現象(Other volcanic phenomena) | - |

Note: Plumes were from the Numanodaira - SW area.

Note: Uncolored:Plume color was White(W).

Colored:Plume color was Light white(LW), Grayish white(GW), Gray(G)

Adatarayama: May,2014



(19)磐梯山

震動観測(Seismic Observation)

Observation Point: BNDA

|   | 月計 total | 最大(起日) max (date) |
|---|----------|-------------------|
| 火山性地震回数(Number of volcanic earthquakes)     | 28       | 8 (8)             |
| 火山性微動回数(Number of volcanic tremors)         | -        | -                 |
| 微動継続時間(Duration of volcanic tremors) (min.) | -        | -                 |

Note: BNDA(N37°35.04' E140°04.79' H1000m)

遠望観測(Visual Observation)

|                                       | 最大(起日) max (date) |
|---------------------------------------|-------------------|
| 噴煙量(Quantity of plumes) (JMA's scale) | 1 (9,22,27)       |
| 噴煙の高さ(Height of plumes) (m)           | 50 (22,27)        |

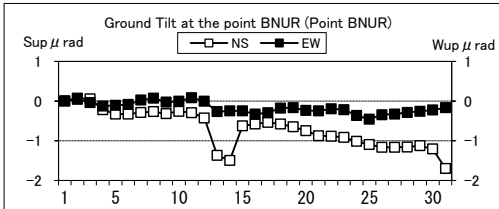
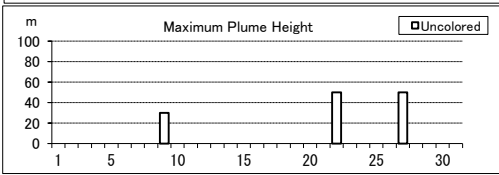
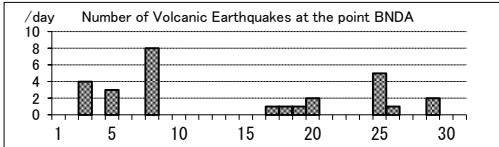
|                                  |   |
|----------------------------------|---|
| 噴煙の色(Color of plumes)            | W |
| 他の火山現象(Other volcanic phenomena) | - |

Note: Plumes were from the Fumarolic area in Crater wall.

Note: Uncolored:Plume color was White(W).

Colored:Plume color was Light white(LW), Grayish white(GW), Gray(G) and other.

Bandaisan: May,2014



(20)那須岳

震動観測(Seismic Observation)

Observation Point: NSUA

|   | 月計 total | 最大(起日) max (date) |
|---|----------|-------------------|
| 火山性地震回数(Number of volcanic earthquakes)     | 13       | 3 (22)            |
| 火山性微動回数(Number of volcanic tremors)         | -        | -                 |
| 微動継続時間(Duration of volcanic tremors) (min.) | -        | -                 |

Note: NSUA (N37°06.38' E139°59.44' H1,083m)

遠望観測(Visual Observation)

|                                       | 最大(起日) max (date) |
|---------------------------------------|-------------------|
| 噴煙量(Quantity of plumes) (JMA's scale) | 1 (abbr.)         |
| 噴煙の高さ(Height of plumes) (m)           | 100 (18)          |

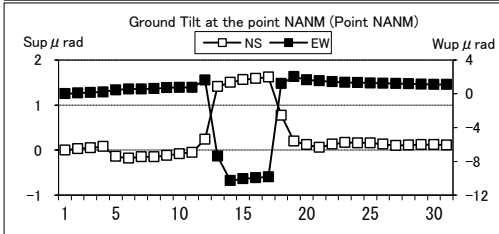
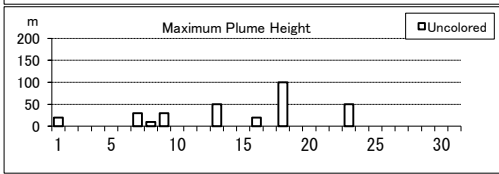
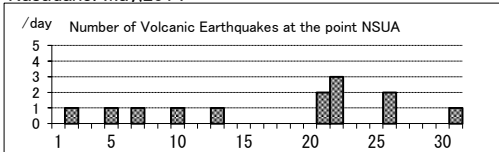
|                                  |   |
|----------------------------------|---|
| 噴煙の色(Color of plumes)            | W |
| 他の火山現象(Other volcanic phenomena) | - |

Note: Plumes were from the west flank of Mt. Nasudake.

Note: Uncolored:Plume color was White(W).

Colored:Plume color was Light white(LW), Grayish white(GW), Gray(G) and other.

Nasudake: May,2014



(21)日光白根山

震動観測(Seismic Observation)

Observation Point: NSYG

|   | 月計 total | 最大(起日) max (date) |
|---|----------|-------------------|
| 火山性地震回数(Number of volcanic earthquakes)     | 6        | 2 (6,17,19)       |
| 火山性微動回数(Number of volcanic tremors)         | -        | -                 |
| 微動継続時間(Duration of volcanic tremors) (min.) | -        | -                 |

Note: NSYG (N36°48.22' E139°24.46' H1,642m)

遠望観測(Visual Observation)

|                                       | 最大(起日) max (date) |
|---------------------------------------|-------------------|
| 噴煙量(Quantity of plumes) (JMA's scale) | -                 |
| 噴煙の高さ(Height of plumes) (m)           | -                 |

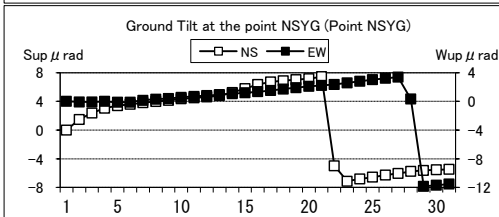
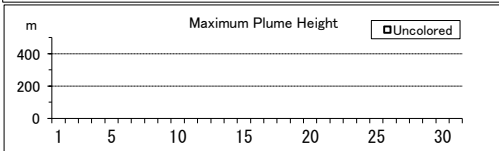
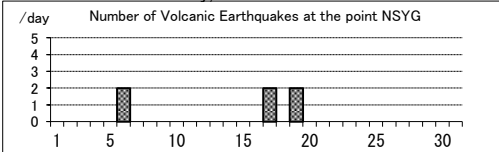
|                                  |   |
|----------------------------------|---|
| 噴煙の色(Color of plumes)            | - |
| 他の火山現象(Other volcanic phenomena) | - |

Note: Plumes were from Summit Area of Nikko-Shiranesan(Location A)

Note: Uncolored:Plume color was White(W).

Colored:Plume color was Light white(LW), Grayish white(GW), Gray(G) and other.

Nikko-Shiranesan: May,2014



(22)草津白根山

震動観測(Seismic Observation)

|   | 月計<br>total | 最大(起日)<br>max (date) |
|---|-------------|----------------------|
| 火山性地震回数(Number of volcanic earthquakes)     | 566         | 69 (23)              |
| 火山性微動回数(Number of volcanic tremors)         | -           | -                    |
| 微動継続時間(Duration of volcanic tremors) (min.) | -           | -                    |

Note: KSHA (N36°38.88' E138°32.73' H1,933m)

遠望観測(Visual Observation)

|                                       | 最大(起日) max (date) |
|---------------------------------------|-------------------|
| 噴煙量(Quantity of plumes) (JMA's scale) | 1 (abbr.)         |
| 噴煙の高さ(Height of plumes) (m)           | 80 (6)            |

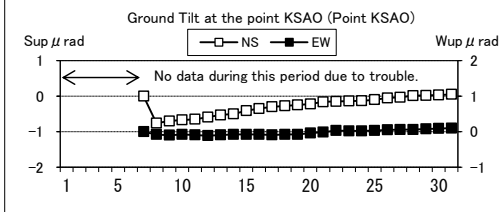
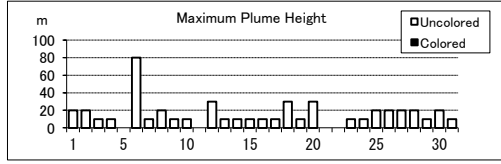
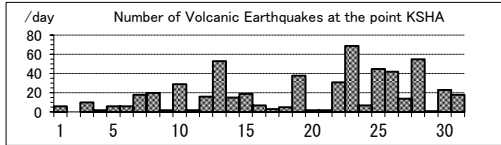
|                                  |   |
|----------------------------------|---|
| 噴煙の色(Color of plumes)            | W |
| 他の火山現象(Other volcanic phenomena) | - |

Note: Plumes were from the Yugama Crater and Fumaroles at northern side of Yugama Crater

Note: Uncolored:Plume color was White(W).

Colored:Plume color was Light white(LW), Grayish white(GW), Gray(G) and other.

Kusatsu-Shiranesan: May,2014



(23)浅間山

震動観測(Seismic Observation)

|   | 月計<br>total | 最大(起日)<br>max (date) |
|---|-------------|----------------------|
| 火山性地震回数(Number of volcanic earthquakes)     | 490         | 24 (14.15.29)        |
| 火山性微動回数(Number of volcanic tremors)         | 10          | 3 (2)                |
| 微動継続時間(Duration of volcanic tremors) (min.) | 10          | 3 (2)                |

Note: ASMB (N36°23.37' E138°31.13' H1,864m)

遠望観測(Visual Observation)

|                                       | 最大(起日) max (date) |
|---------------------------------------|-------------------|
| 噴煙量(Quantity of plumes) (JMA's scale) | 1 (abbr.)         |
| 噴煙の高さ(Height of plumes) (m)           | 200 (16,18,28)    |

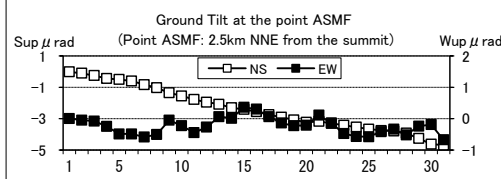
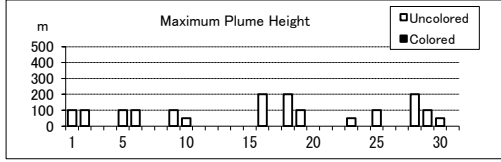
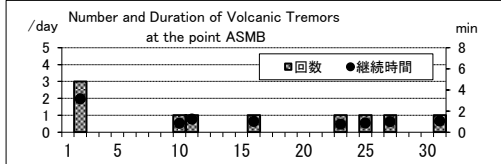
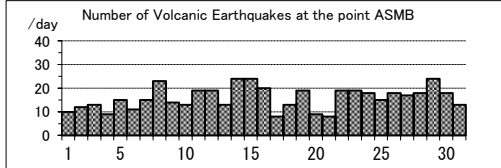
|                                  |   |
|----------------------------------|---|
| 噴煙の色(Color of plumes)            | W |
| 他の火山現象(Other volcanic phenomena) | - |

Note: Plumes were from the Kamayama Crater(Location A).

Note: Uncolored:Plume color was White(W).

Colored:Plume color was Light white(LW), Grayish white(GW), Gray(G) and other.

Asamayama: May,2014





(24)新潟焼山

震動観測(Seismic Observation)

|   |          |                   |
|---|----------|-------------------|
| Observation Point: NYK2                     | 月計 total | 最大(起日) max (date) |
| 火山性地震回数(Number of volcanic earthquakes)     | 3        | 2 (30)            |
| 火山性微動回数(Number of volcanic tremors)         | -        | -                 |
| 微動継続時間(Duration of volcanic tremors) (min.) | -        | -                 |

Note: NYK2 (N36°57.35' E138°02.29' H1,147m)

遠望観測(Visual Observation)

|                                       |                   |
|---------------------------------------|-------------------|
| 噴煙量(Quantity of plumes) (JMA's scale) | 最大(起日) max (date) |
| 1 (abbr.)                             |                   |
| 噴煙の高さ(Height of plumes) (m)           | 20 (7,16)         |

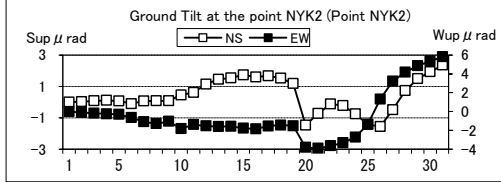
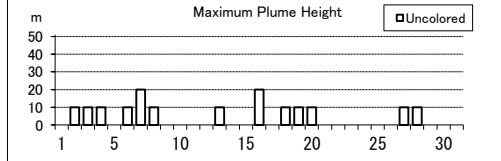
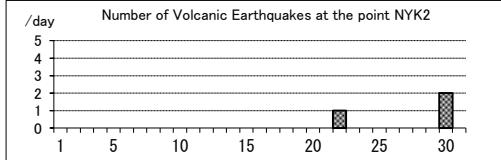
|                                  |   |
|----------------------------------|---|
| 噴煙の色(Color of plumes)            | W |
| 他の火山現象(Other volcanic phenomena) | - |

Note: Plumes were from Upper East flank(Location A).

Note: Uncolored:Plume color was White(W).

Colored:Plume color was Light white(LW), Grayish white(GW), Gray(G) and other.

Niigata-Yakevama: May,2014



(25)焼岳

震動観測(Seismic Observation)

|   |          |                   |
|---|----------|-------------------|
| Observation Point: YKN2                     | 月計 total | 最大(起日) max (date) |
| 火山性地震回数(Number of volcanic earthquakes)     | 4748     | 3167 (3)          |
| 火山性微動回数(Number of volcanic tremors)         | -        | -                 |
| 微動継続時間(Duration of volcanic tremors) (min.) | -        | -                 |

Note: YKN2 (N36°15.67' E137°34.45' H1,151m)

遠望観測(Visual Observation)

|                                       |                   |
|---------------------------------------|-------------------|
| 噴煙量(Quantity of plumes) (JMA's scale) | 最大(起日) max (date) |
| 1 (abbr.)                             |                   |
| 噴煙の高さ(Height of plumes) (m)           | 100 (28)          |

|                                  |   |
|----------------------------------|---|
| 噴煙の色(Color of plumes)            | W |
| 他の火山現象(Other volcanic phenomena) | - |

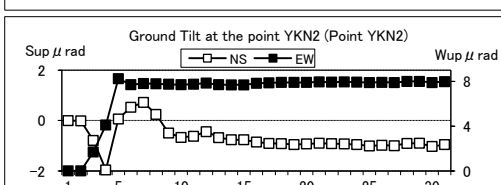
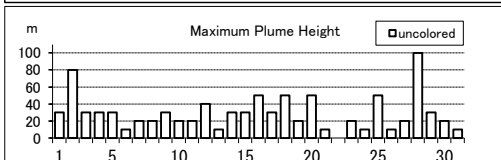
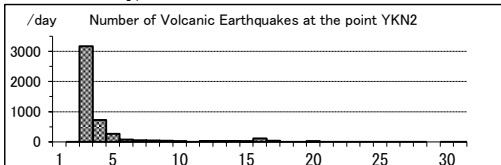
Note: Plumes were from the North peak (Location B)

and the upper Iwatsubodani (Location A).

Note: Uncolored:Plume color was White(W).

Colored:Plume color was Light white(LW), Grayish white(GW), Gray(G) and other.

Yakedake May,2014



(26)乗鞍岳

震動観測(Seismic Observation)

|   |          |                   |
|---|----------|-------------------|
| Observation Point: NOSM                     | 月計 total | 最大(起日) max (date) |
| 火山性地震回数(Number of volcanic earthquakes)     | 24       | 7 (20)            |
| 火山性微動回数(Number of volcanic tremors)         | -        | -                 |
| 微動継続時間(Duration of volcanic tremors) (min.) | -        | -                 |

Note: NOSM (N36°06.85' E137°35.81' H1,804m)

遠望観測(Visual Observation)

|                                       |                   |
|---------------------------------------|-------------------|
| 噴煙量(Quantity of plumes) (JMA's scale) | 最大(起日) max (date) |
| -                                     |                   |
| 噴煙の高さ(Height of plumes) (m)           | -                 |

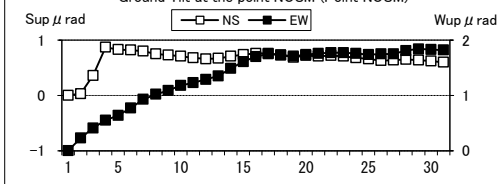
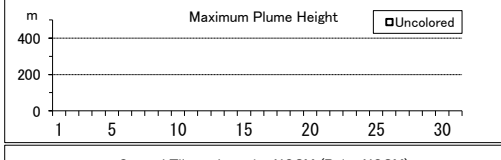
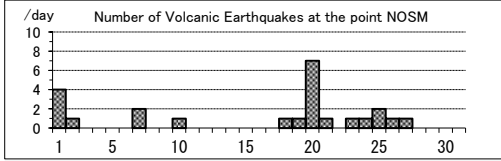
|                                  |   |
|----------------------------------|---|
| 噴煙の色(Color of plumes)            | - |
| 他の火山現象(Other volcanic phenomena) | - |

Note: Plumes were from Summit Crater(Location A).

Note: Uncolored:Plume color was White(W).

Colored:Plume color was Light white(LW), Grayish white(GW), Gray(G) and other.

Norikuradake: May,2014



(27)御嶽山

震動観測(Seismic Observation)  
Observation Point: ONTA

|   | 月計<br>total | 最大(起日)<br>max (date) |
|---|-------------|----------------------|
| 火山性地震回数(Number of volcanic earthquakes)     | 7           | 2 (4.11.13)          |
| 火山性微動回数(Number of volcanic tremors)         | -           | -                    |
| 微動継続時間(Duration of volcanic tremors) (min.) | -           | -                    |

Note: ONTA (N35°52.61' E137°29.73' H2,228m)

遠望観測(Visual Observation)

|                                       | 最大(起日) max (date) |
|---------------------------------------|-------------------|
| 噴煙量(Quantity of plumes) (JMA's scale) | 1 (abbr.)         |
| 噴煙の高さ(Height of plumes) (m)           | 100 (16,25,28)    |

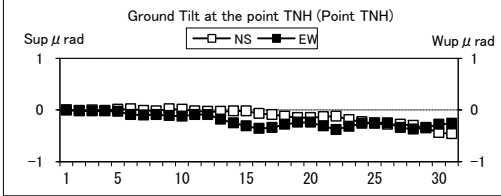
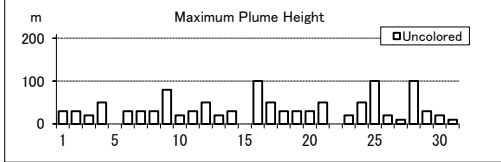
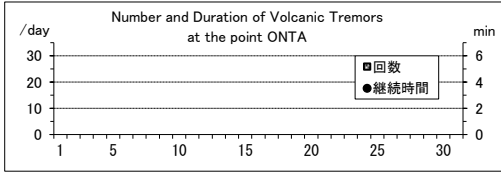
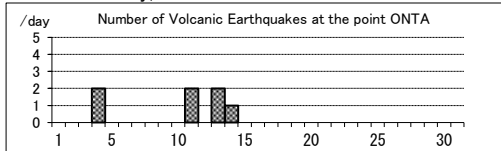
|                                  |   |
|----------------------------------|---|
| 噴煙の色(Color of plumes)            | W |
| 他の火山現象(Other volcanic phenomena) | - |

Note: Plumes were from the Otaki summit Crater (A) and/or S6

Note: Uncolored:Plume color was White(W).

Colored:Plume color was Light white(LW), Grayish white(GW), Gray(G) and other.

Ontakesan: May.2014



(28)白山

震動観測(Seismic Observation)  
Observation Point: HSMD

|   | 月計<br>total | 最大(起日)<br>max (date) |
|---|-------------|----------------------|
| 火山性地震回数(Number of volcanic earthquakes)     | 28          | 6 (18,19)            |
| 火山性微動回数(Number of volcanic tremors)         | -           | -                    |
| 微動継続時間(Duration of volcanic tremors) (min.) | -           | -                    |

Note: HSMD (N36°08.78' E136°45.86' H2,345m)

遠望観測(Visual Observation)

|                                       | 最大(起日) max (date) |
|---------------------------------------|-------------------|
| 噴煙量(Quantity of plumes) (JMA's scale) | -                 |
| 噴煙の高さ(Height of plumes) (m)           | -                 |

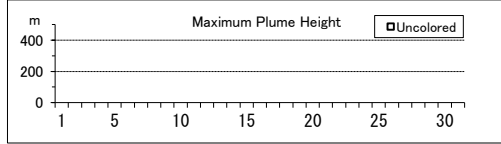
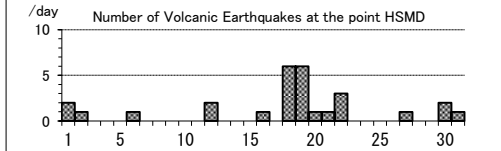
|                                  |   |
|----------------------------------|---|
| 噴煙の色(Color of plumes)            | - |
| 他の火山現象(Other volcanic phenomena) | - |

Note: Plumes were from Summit Area of Hakusan(Location A)

Note: Uncolored:Plume color was White(W).

Colored:Plume color was Light white(LW), Grayish white(GW), Gray(G) and other.

Hakusan: May.2014



(29)富士山

震動観測(Seismic Observation)  
Observation Point: N.FJ5V(NIED)

|   | 月計<br>total | 最大(起日)<br>max (date) |
|---|-------------|----------------------|
| 火山性地震回数(Number of volcanic earthquakes)     | 22          | 4 (5,28)             |
| 火山性微動回数(Number of volcanic tremors)         | -           | -                    |
| 微動継続時間(Duration of volcanic tremors) (min.) | -           | -                    |

Note: N.FJ5V(NIED) (N35°23.08' E138°41.72' H2,090m)

遠望観測(Visual Observation)

|                                       | 最大(起日) max (date) |
|---------------------------------------|-------------------|
| 噴煙量(Quantity of plumes) (JMA's scale) | -                 |
| 噴煙の高さ(Height of plumes) (m)           | -                 |

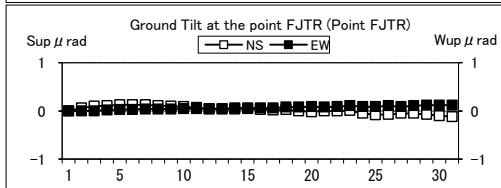
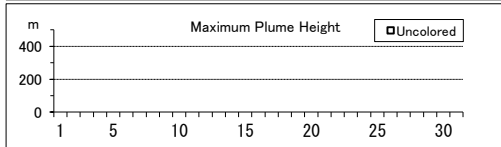
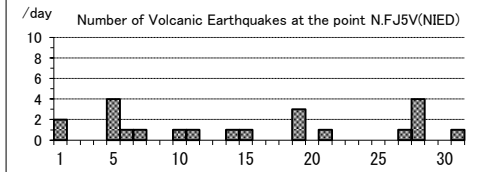
|                                  |   |
|----------------------------------|---|
| 噴煙の色(Color of plumes)            | - |
| 他の火山現象(Other volcanic phenomena) | - |

Note: Plumes were from Summit Crater(LocationA),Hoei Crater(B)

Note: Uncolored:Plume color was White(W).

Colored:Plume color was Light white(LW), Grayish white(GW), Gray(G) and other.

Fujisan: May.2014



(30)箱根山

震動観測(Seismic Observation)

|   | 月計<br>total | 最大(起日)<br>max (date) |
|---|-------------|----------------------|
| 火山性地震回数(Number of volcanic earthquakes)     | 5           | 2 (7)                |
| 火山性微動回数(Number of volcanic tremors)         | -           | -                    |
| 微動継続時間(Duration of volcanic tremors) (min.) | -           | -                    |

Note: OK.KOM(N35°13.2' E139°02.0' H1,049m)

遠望観測(Visual Observation)

|                                       | 最大(起日) max (date) |
|---------------------------------------|-------------------|
| 噴煙量(Quantity of plumes) (JMA's scale) | 1 (abbr.)         |
| 噴煙の高さ(Height of plumes) (m)           | 50 (abbr.)        |

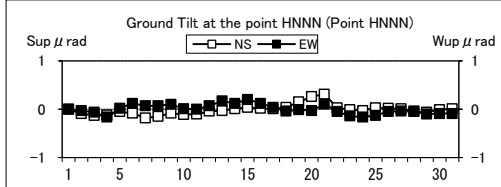
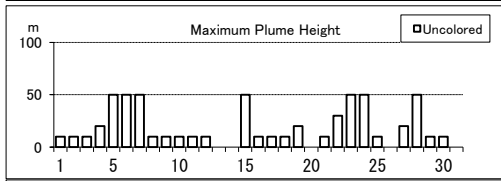
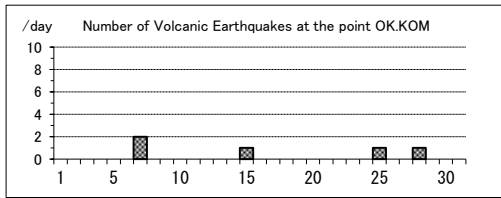
|                                  |   |
|----------------------------------|---|
| 噴煙の色(Color of plumes)            | W |
| 他の火山現象(Other volcanic phenomena) | - |

Note: Plumes were from Fumaroles near Owakudani(Location A), Fumaroles near Sounjigoku(B)

Note: Uncolored:Plume color was White(W).

Colored:Plume color was Light white(LW), Grayish white(GW), Gray(G) and other.

Hakonevama: May,2014



(31)伊豆東部火山群

震動観測(Seismic Observation)

|   | 月計<br>total | 最大(起日)<br>max (date) |
|---|-------------|----------------------|
| 火山性地震回数(Number of volcanic earthquakes)     | 12          | 5 (27)               |
| 火山性微動回数(Number of volcanic tremors)         | -           | -                    |
| 微動継続時間(Duration of volcanic tremors) (min.) | -           | -                    |

Note: ITBA (N35°00.46' E139°05.87' H12m)

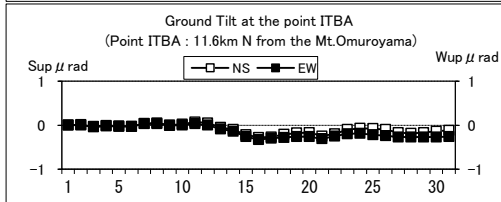
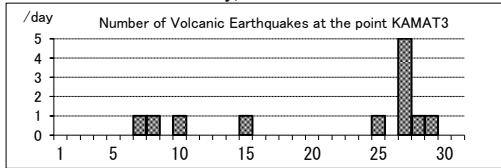
KAMAT3(N34°55.71' E139°03.65' H175m)

遠望観測(Visual Observation)

|                                       | 最大(起日) max (date) |
|---------------------------------------|-------------------|
| 噴煙量(Quantity of plumes) (JMA's scale) | -                 |
| 噴煙の高さ(Height of plumes) (m)           | -                 |

|                                  |   |
|----------------------------------|---|
| 噴煙の色(Color of plumes)            | - |
| 他の火山現象(Other volcanic phenomena) | - |

Izu-Tobu Volcanoes: May,2014



(32)伊豆大島

震動観測(Seismic Observation)

|   | 月計<br>total | 最大(起日)<br>max (date) |
|---|-------------|----------------------|
| 火山性地震回数(Number of volcanic earthquakes)     | 52          | 6 (24)               |
| 火山性微動回数(Number of volcanic tremors)         | -           | -                    |
| 微動継続時間(Duration of volcanic tremors) (min.) | -           | -                    |

Note: OSMA (N34°44.16' E139°23.21' H553m)

遠望観測(Visual Observation)

|                                       | 最大(起日) max (date) |
|---------------------------------------|-------------------|
| 噴煙量(Quantity of plumes) (JMA's scale) | 1 (abbr.)         |
| 噴煙の高さ(Height of plumes) (m)           | 30 (abbr.)        |

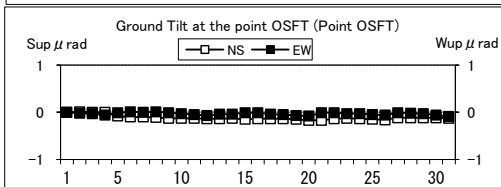
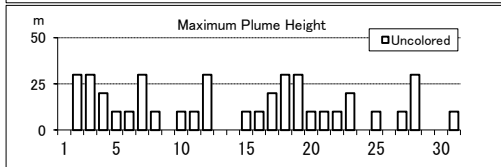
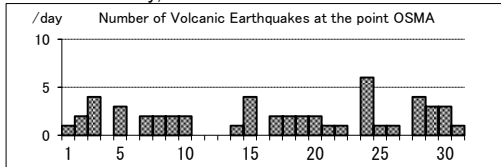
|                                  |   |
|----------------------------------|---|
| 噴煙の色(Color of plumes)            | W |
| 他の火山現象(Other volcanic phenomena) | - |

Note:Plumes were from the Miharayama Summit Crater(Location A), the Fumaroles at western side of Miharashinzan(A1), the Fumaroles near Kengamine(A2), the Fumaroles at eastern side of Miharashinzan(A3)

Note: Uncolored:Plume color was White(W).

Colored:Plume color was Light white(LW), Grayish white(GW), Gray(G) and other.

Izu-Oshima: May,2014



(33)新島

震動観測(Seismic Observation)

| Observation Point: NIST                     | 月計    | 最大(起日)     |
|---|-------|------------|
|   | total | max (date) |
| 火山性地震回数(Number of volcanic earthquakes)     | -     | -          |
| 火山性微動回数(Number of volcanic tremors)         | -     | -          |
| 微動継続時間(Duration of volcanic tremors) (min.) | -     | -          |

Note: NIST (N34°21.76' E139°14.92' H41m)

遠望観測(Visual Observation)

| Observation Point: NIST               | 最大(起日)     |
|---------------------------------------|------------|
|                                       | max (date) |
| 噴煙量(Quantity of plumes) (JMA's scale) | -          |
| 噴煙の高さ(Height of plumes) (m)           | -          |

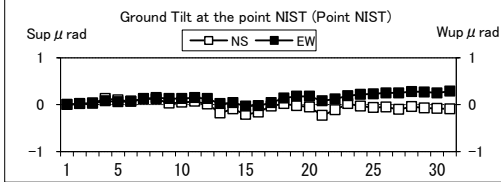
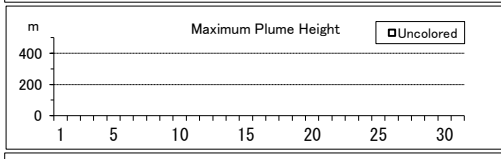
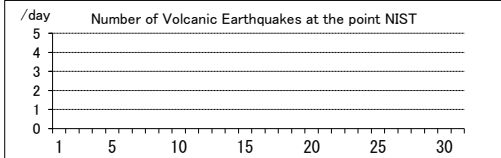
|                                  |   |
|----------------------------------|---|
| 噴煙の色(Color of plumes)            | - |
| 他の火山現象(Other volcanic phenomena) | - |

Note: Plumes were from Summit Area of Tangoyama(Location A)

Note: Uncolored:Plume color was White(W).

Colored:Plume color was Light white(LW), Grayish white(GW), Gray(G) and other.

Niiijima: May,2014



(34)神津島

震動観測(Seismic Observation)

| Observation Point: KOTJ                     | 月計    | 最大(起日)     |
|---|-------|------------|
|   | total | max (date) |
| 火山性地震回数(Number of volcanic earthquakes)     | 3     | 1 (6,8,10) |
| 火山性微動回数(Number of volcanic tremors)         | -     | -          |
| 微動継続時間(Duration of volcanic tremors) (min.) | -     | -          |

Note: KOTJ (N34°13.24' E139°08.91' H372m)

遠望観測(Visual Observation)

| Observation Point: KOTJ               | 最大(起日)     |
|---------------------------------------|------------|
|                                       | max (date) |
| 噴煙量(Quantity of plumes) (JMA's scale) | -          |
| 噴煙の高さ(Height of plumes) (m)           | -          |

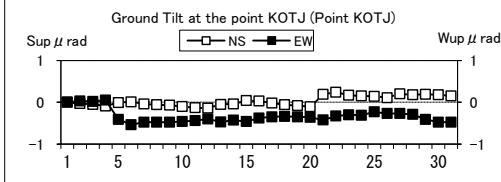
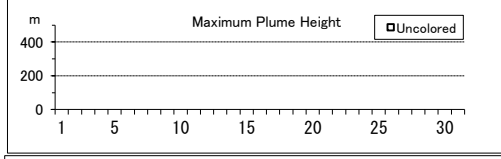
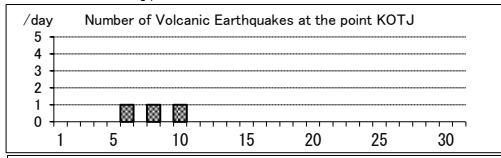
|                                  |   |
|----------------------------------|---|
| 噴煙の色(Color of plumes)            | - |
| 他の火山現象(Other volcanic phenomena) | - |

Note: Plumes were from Summit Area of Tenjosan(Location A)

Note: Uncolored:Plume color was White(W).

Colored:Plume color was Light white(LW), Grayish white(GW), Gray(G) and other.

Kozushima: May,2014



(35)三宅島

震動観測(Seismic Observation)

| Observation Point: MJON                     | 月計    | 最大(起日)     |
|---|-------|------------|
|   | total | max (date) |
| 火山性地震回数(Number of volcanic earthquakes)     | 25    | 3 (4,6)    |
| 火山性微動回数(Number of volcanic tremors)         | -     | -          |
| 微動継続時間(Duration of volcanic tremors) (min.) | -     | -          |

Note: MJON (N34°04.38' E139°30.86' H472m)

遠望観測(Visual Observation)

| Observation Point: MJON               | 最大(起日)     |
|---------------------------------------|------------|
|                                       | max (date) |
| 噴煙量(Quantity of plumes) (JMA's scale) | 1 (abbr.)  |
| 噴煙の高さ(Height of plumes) (m)           | 300 (18)   |

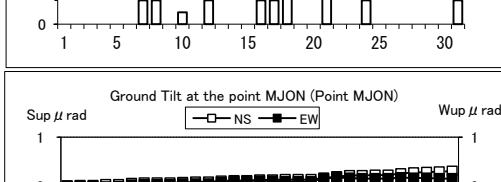
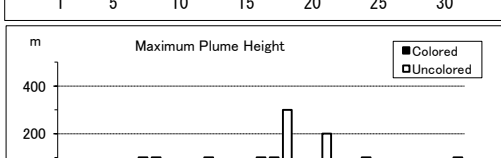
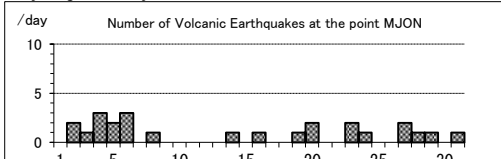
|                                  |   |
|----------------------------------|---|
| 噴煙の色(Color of plumes)            | W |
| 他の火山現象(Other volcanic phenomena) | - |

Note: Plumes were from the Summit Crater.

Note: Uncolored:Plume color was White(W).

Colored:Plume color was Light white(LW), Grayish white(GW), Gray(G) and other.

Miyakejima: May,2014



(36)八丈島

震動観測(Seismic Observation)

|   | 月計<br>total | 最大(起日)<br>max (date) |
|---|-------------|----------------------|
| 火山性地震回数(Number of volcanic earthquakes)     | -           | -                    |
| 火山性微動回数(Number of volcanic tremors)         | -           | -                    |
| 微動継続時間(Duration of volcanic tremors) (min.) | -           | -                    |

Note: HACHJ3 (N33 06.92 E139 48.83 H70m)

遠望観測(Visual Observation)

|                                       | 最大(起日) max (date) |
|---------------------------------------|-------------------|
| 噴煙量(Quantity of plumes) (JMA's scale) | -                 |
| 噴煙の高さ(Height of plumes) (m)           | -                 |

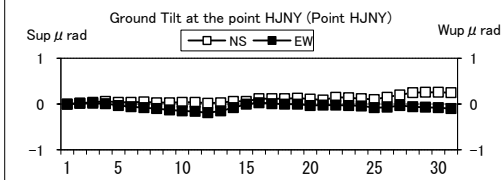
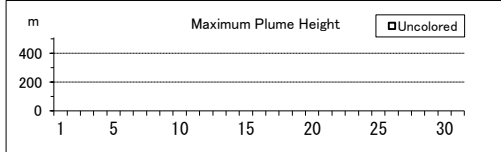
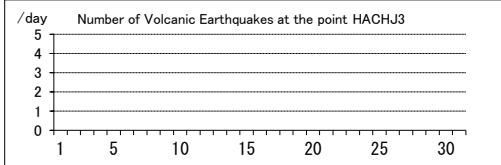
|                                  |   |
|----------------------------------|---|
| 噴煙の色(Color of plumes)            | - |
| 他の火山現象(Other volcanic phenomena) | - |

Note: Plumes were from Nishiyama Crater(Location A)

Note: Uncolored:Plume color was White(W).

Colored:Plume color was Light white(LW), Grayish white(GW), Gray(G) and other.

Hachijojima: May,2014



(37)青ヶ島

震動観測(Seismic Observation)

|   | 月計<br>total | 最大(起日)<br>max (date) |
|---|-------------|----------------------|
| 火山性地震回数(Number of volcanic earthquakes)     | -           | -                    |
| 火山性微動回数(Number of volcanic tremors)         | -           | -                    |
| 微動継続時間(Duration of volcanic tremors) (min.) | -           | -                    |

Note: AOMT (N32'28.02' E139'45.64' H273m)

遠望観測(Visual Observation)

|                                       | 最大(起日) max (date) |
|---------------------------------------|-------------------|
| 噴煙量(Quantity of plumes) (JMA's scale) | -                 |
| 噴煙の高さ(Height of plumes) (m)           | -                 |

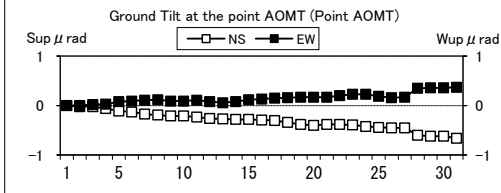
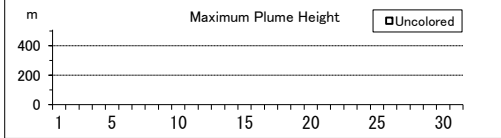
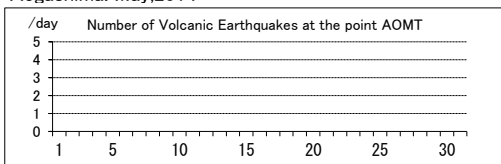
|                                  |   |
|----------------------------------|---|
| 噴煙の色(Color of plumes)            | - |
| 他の火山現象(Other volcanic phenomena) | - |

Note: Plumes were from Western flank of Maruyama(Location A)

Note: Uncolored:Plume color was White(W).

Colored:Plume color was Light white(LW), Grayish white(GW), Gray(G) and other.

Aogashima: May,2014



(38)硫黄島

震動観測(Seismic Observation)

|   | 月計<br>total | 最大(起日)<br>max (date) |
|---|-------------|----------------------|
| 火山性地震回数(Number of volcanic earthquakes)     | 201         | 17 (31)              |
| 火山性微動回数(Number of volcanic tremors)         | 13          | 3 (9)                |
| 微動継続時間(Duration of volcanic tremors) (min.) | 13          | 3 (18)               |

Note: IOCD (N24 46.12' E141' 18.43' H72m)

遠望観測(Visual Observation)

|                                       | 最大(起日) max (date) |
|---------------------------------------|-------------------|
| 噴煙量(Quantity of plumes) (JMA's scale) | -                 |
| 噴煙の高さ(Height of plumes) (m)           | -                 |

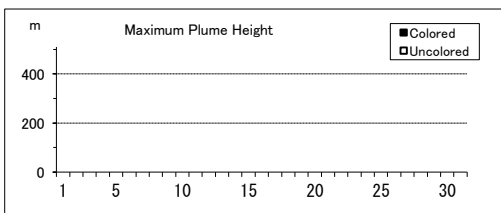
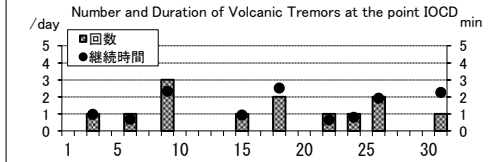
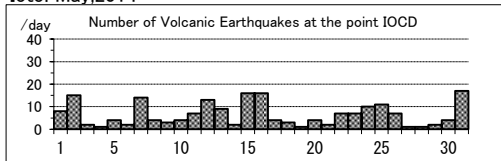
|                                  |   |
|----------------------------------|---|
| 噴煙の色(Color of plumes)            | - |
| 他の火山現象(Other volcanic phenomena) | - |

Note: Plumes were from Asodaikanbetsuko (Location A)and/or Idogahama (Location B)

Note: Uncolored:Plume color was White(W).

Colored:Plume color was Light white(LW), Grayish white(GW), Gray(G) and other.

Ioto: May,2014



(39) 鶴見岳・伽藍岳

震動観測(Seismic Observation)

|   | 月計<br>total | 最大(起日)<br>max (date) |
|---|-------------|----------------------|
| 火山性地震回数(Number of volcanic earthquakes)     | 4           | 1 (abbr.)            |
| 火山性微動回数(Number of volcanic tremors)         | -           | -                    |
| 微動継続時間(Duration of volcanic tremors) (min.) | -           | -                    |

Note: TGBP (N33°19.53' E131°27.07' H398m)

遠望観測(Visual Observation)

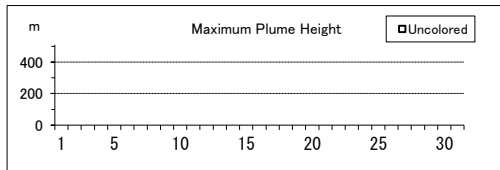
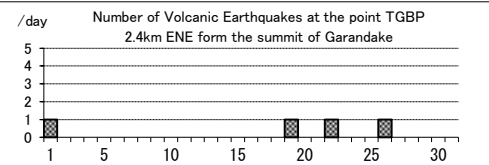
|                                       | 最大(起日) max (date) |
|---------------------------------------|-------------------|
| 噴煙量(Quantity of plumes) (JMA's scale) | -                 |
| 噴煙の高さ(Height of plumes) (m)           | -                 |
| 噴煙の色(Color of plumes)                 | -                 |
| 他の火山現象(Other volcanic phenomena)      | -                 |

Note: Plumes were from RegionA and/or RegionB.

Note: Uncolored:Plume color was White(W).

Colored:Plume color was Light white(LW), Grayish white(GW), Gray(G) and other.

Tsurumidake and Garandake: May.2014



(40) 九重山

震動観測(Seismic Observation)

|   | 月計<br>total | 最大(起日)<br>max (date) |
|---|-------------|----------------------|
| 火山性地震回数(Number of volcanic earthquakes)     | 7           | 2 (22)               |
| 火山性微動回数(Number of volcanic tremors)         | -           | -                    |
| 微動継続時間(Duration of volcanic tremors) (min.) | -           | -                    |

Note: KJA2 (N33°06.20' E131°13.78' H1,282m)

遠望観測(Visual Observation)

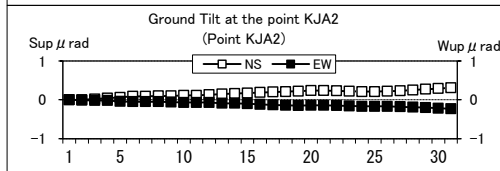
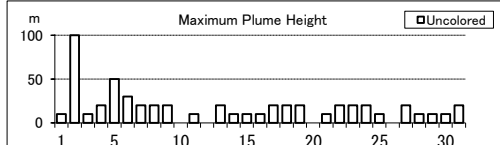
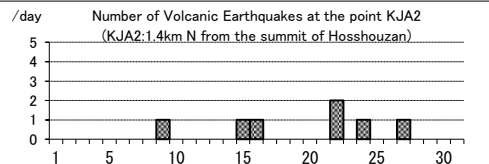
|                                       | 最大(起日) max (date) |
|---------------------------------------|-------------------|
| 噴煙量(Quantity of plumes) (JMA's scale) | 1 (abbr.)         |
| 噴煙の高さ(Height of plumes) (m)           | 100 (2)           |
| 噴煙の色(Color of plumes)                 | W                 |
| 他の火山現象(Other volcanic phenomena)      | -                 |

Note: Plumes were from the east and/or north-east flank of Mt. Hossho (Location A,B,C or D).

Note: Uncolored:Plume color was White(W).

Colored:Plume color was Light white(LW), Grayish white(GW), Gray(G) and other.

Kujusan: May.2014



(41)阿蘇山

震動観測(Seismic Observation)

| Observation Point: ASOA                             | 月計    | 最大(起日)     |
|---|-------|------------|
|   | total | max (date) |
| 火山性地震回数(Number of volcanic earthquakes)             | 100   | 9 (30)     |
| 孤立型火山性微動回数<br>(Number of isolated volcanic tremors) | 651   | 43 (21)    |

Note: ASOA (N32°53.10' E131°04.65' H1,163m)

遠望観測(Visual Observation)

|                                       | 最大(起日) max (date) |
|---------------------------------------|-------------------|
| 噴煙量(Quantity of plumes) (JMA's scale) | 1 (abbr.)         |
| 噴煙の高さ(Height of plumes) (m)           | 400 (2)           |

|                                  |    |
|----------------------------------|----|
| 噴煙の色(Color of plumes)            | W  |
| 他の火山現象(Other volcanic phenomena) | GI |

Note: Plumes were from the Crater No.1 of Mt. Nakadake.

Note: Uncolored:Plume color was White(W).

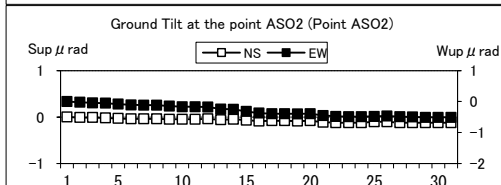
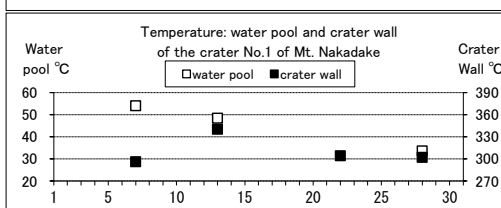
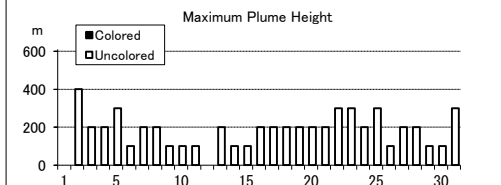
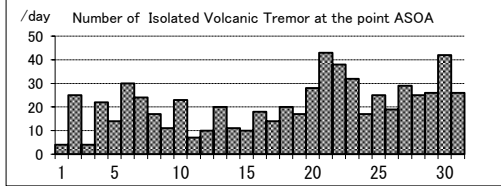
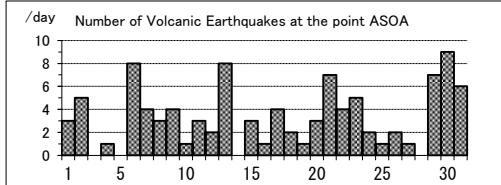
Colored:Plume color was Light white(LW), Grayish white(GW), Gray(G) and other.

現地観測(Field Observation)

|  | 最高(起日) max (date)  | 最低(起日) min (date) |
|--|--|-------------------|
|  | 火口内の湯だまりの表面温度 (Surface temperature on the water pool in the crater) (°C) | 54 (7)            |
| 火口壁の表面温度 (Surface temperature on the crater wall) (°C) | 340 (13)   | 296 (7)           |

Observation Point:the Crater No.1 of Mt. Nakadake

Asosan: May,2014



(42)雲仙岳

震動観測(Seismic Observation)

| Observation Point: UNKN                    | 月計    | 最大(起日)     |
|--|-------|------------|
|  | total | max (date) |
| 火山性地震回数(Number of volcanic earthquakes)    | 25    | 4 (7,16)   |
| 火山性微動回数(Number of volcanic tremors)        | -     | -          |
| 微動継続時間(Duration of volcanic tremors) (min) | -     | -          |

Note: UNKN (N32°46.31' E130°17.31' H834m)

遠望観測(Visual Observation)

|                                       | 最大(起日) max (date) |
|---------------------------------------|-------------------|
| 噴煙量(Quantity of plumes) (JMA's scale) | -                 |
| 噴煙の高さ(Height of plumes) (m)           | -                 |

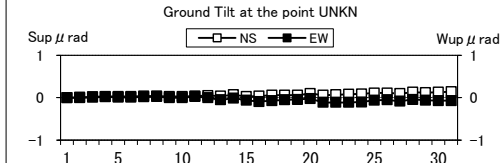
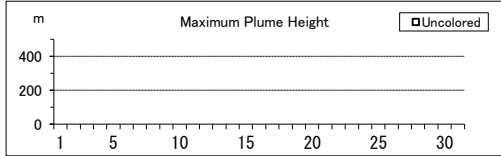
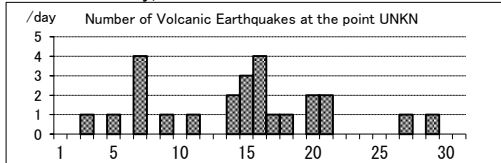
|                                  |   |
|----------------------------------|---|
| 噴煙の色(Color of plumes)            | - |
| 他の火山現象(Other volcanic phenomena) | - |

Note: Plumes were from the 10th Lava Dome(Location A10) and/or the 11th Lava Dome(A11).

Note: Uncolored:Plume color was White(W).

Colored:Plume color was Light white(LW), Grayish white(GW), Gray(G) and other.

Unzendake: May,2014



(43)霧島山

新燃岳 (Shinmoedake)

震動観測(Seismic Observation)

| Observation Point: KIRA                    | 月計 total | 最大(起日) max (date) |
|--|----------|-------------------|
| 火山性地震回数(Number of volcanic earthquakes)    | 91       | 15 (7)            |
| 火山性微動回数(Number of volcanic tremors)        | -        | -                 |
| 微動継続時間(Duration of volcanic tremors) (min) | -        | -                 |

Note: KIRA (N31°54.00' E130°52.27' H1,035m)

遠望観測(Visual Observation)

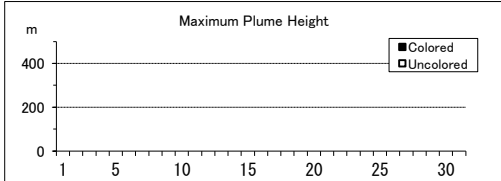
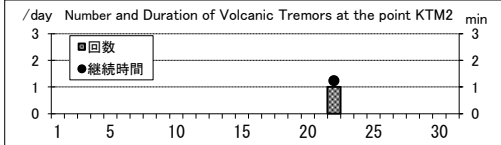
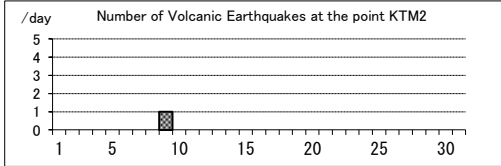
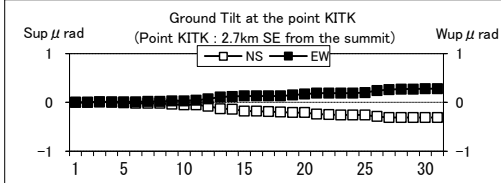
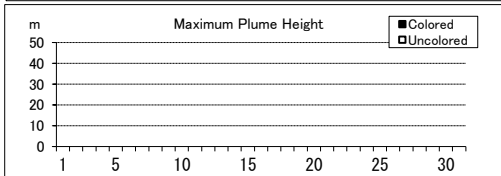
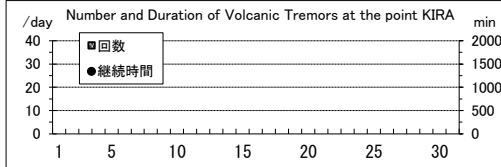
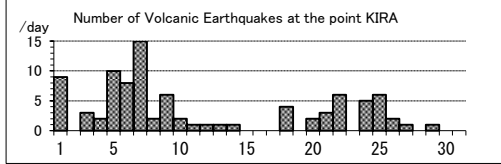
|                                       | 最大(起日) max (date) |
|---------------------------------------|-------------------|
| 噴煙量(Quantity of plumes) (JMA's scale) | -                 |
| 噴煙の高さ(Height of plumes) (m)           | -                 |
| 噴煙の色(Color of plumes)                 | -                 |
| 他の火山現象(Other volcanic phenomena)      | -                 |

Note: Plumes were from the Shinmoedake Crater

Note: Uncolored:Plume color was White(W).

Colored:Plume color was Light white(LW), Grayish white(GW), Gray(G) and other.

Kirishimayama: May,2014



御鉢(Ohachi)

震動観測(Seismic Observation)

| Observation Point: KTM2                    | 月計 total | 最大(起日) max (date) |
|--|----------|-------------------|
| 火山性地震回数(Number of volcanic earthquakes)    | 1        | 1 (9)             |
| 火山性微動回数(Number of volcanic tremors)        | 1        | 1 (22)            |
| 微動継続時間(Duration of volcanic tremors) (min) | 1        | 1 (22)            |

Note: KTM2 (N31°53.13' E130°55.19' H1,538m)

遠望観測(Visual Observation)

|                                       | 最大(起日) max (date) |
|---------------------------------------|-------------------|
| 噴煙量(Quantity of plumes) (JMA's scale) | -                 |
| 噴煙の高さ(Height of plumes) (m)           | -                 |
| 噴煙の色(Color of plumes)                 | -                 |
| 他の火山現象(Other volcanic phenomena)      | -                 |

Note: Plumes were from the Ohachi Crater

Note: Uncolored:Plume color was White(W).

Colored:Plume color was Light white(LW), Grayish white(GW), Gray(G) and other.

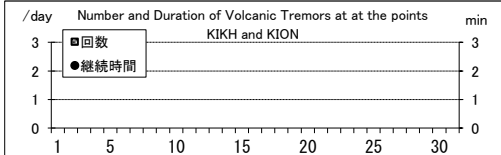
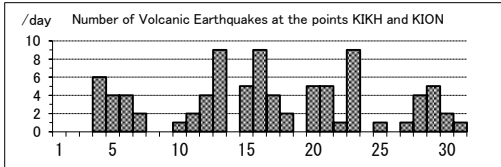
えびの高原(硫黄山)周辺(Ebino Highland Ioyama)

震動観測(Seismic Observation)

| Observation Point: KIKH and KION           | 月計 total | 最大(起日) max (date) |
|--|----------|-------------------|
| 火山性地震回数(Number of volcanic earthquakes)    | 86       | 9 (13,16,23)      |
| 火山性微動回数(Number of volcanic tremors)        | -        | -                 |
| 微動継続時間(Duration of volcanic tremors) (min) | -        | -                 |

Note: KIKH(N31°57.20' E130°52.52' H-95m)

KION(N31°54.68' E130°50.11' H-93m)





(44)桜島

震動観測(Seismic Observation)

| Observation Point: SKRB                    | 月計 total | 最大(起日) max (date) |
|--|----------|-------------------|
| 火山性地震回数(Number of volcanic earthquakes)    | 175      | 24 (24)           |
| 火山性微動回数(Number of volcanic tremors)        | 73       | 15 (24)           |
| 微動継続時間(Duration of volcanic tremors) (min) | 315      | 71 (24)           |

Note: SKRB (N31°35.62' E130°38.35' H455m)

遠望観測(Visual Observation)

|   | 月計 total | 最大(起日) max (date) |
|---|----------|-------------------|
| 爆発回数(Number of explosive eruptions)         | 18       | 4 (3)             |
| 降灰量(Amount of ash fall) (g/m <sup>2</sup> ) | 21       | 16 (11)           |

A,B火口 (A,B crater)

|                                       | 最大(起日) max (date) |
|---------------------------------------|-------------------|
| 噴煙量(Quantity of plumes) (JMA's scale) | 2 (5,8)           |
| 噴煙の高さ(Height of plumes) (m)           | 500 (5)           |

昭和火口 (Showa crater)

|                                       | 最大(起日) max (date) |
|---------------------------------------|-------------------|
| 噴煙量(Quantity of plumes) (JMA's scale) | 5 (10)            |
| 噴煙の高さ(Height of plumes) (m)           | 4500 (10)         |

|                                  |                |
|----------------------------------|----------------|
| 噴煙の色(Color of plumes)            | W,LW,GW        |
| 他の火山現象(Other volcanic phenomena) | GI,AS,Bm,AF,Xp |

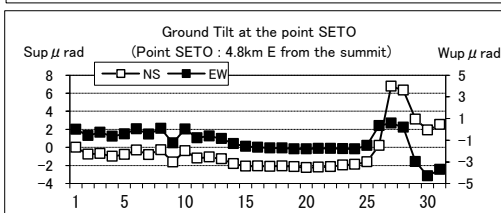
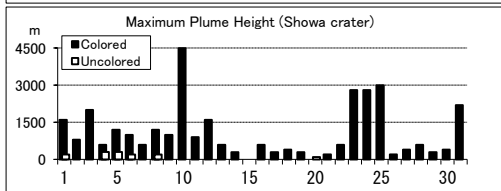
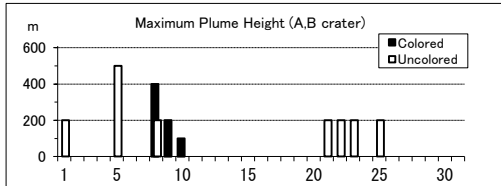
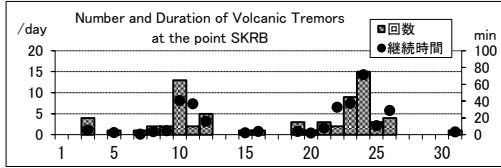
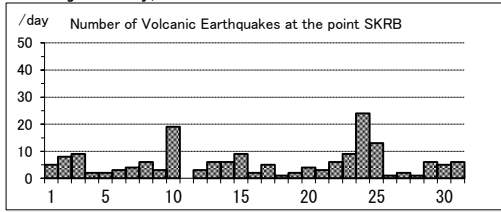
Note: Plumes were from Mt. Minamidake A Crater(A), B Crater(B) and Showa Crater(S)

Note: Uncolored:Plume color was White(W).

Colored:Plume color was Light white(LW), Grayish white(GW), Gray(G) and other.

Visual observation of explosion is described on another sheet.

Sakurajima: May,2014



(45)薩摩硫黄島

震動観測(Seismic Observation)

| Observation Point: STI1                     | 月計 total | 最大(起日) max (date) |
|---|----------|-------------------|
| 火山性地震回数(Number of volcanic earthquakes)     | 163      | 11 (7)            |
| 火山性微動回数(Number of volcanic tremors)         | -        | -                 |
| 微動継続時間(Duration of volcanic tremors) (min.) | -        | -                 |

Note: STI1 (N30°47.26' E130°18.12' H396m)

遠望観測(Visual Observation)

|                                       | 最大(起日) max (date) |
|---------------------------------------|-------------------|
| 噴煙量(Quantity of plumes) (JMA's scale) | 2 (8)             |
| 噴煙の高さ(Height of plumes) (m)           | 500 (8)           |

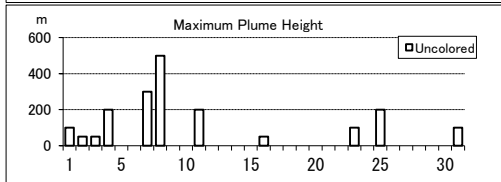
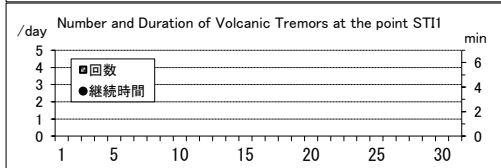
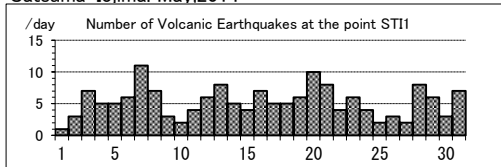
|                                  |    |
|----------------------------------|----|
| 噴煙の色(Color of plumes)            | W  |
| 他の火山現象(Other volcanic phenomena) | GI |

Note: Uncolored:Plume color was White(W)\*.

Colored:Plume color was Light white(LW), Grayish white(GW), Gray(G) and other.

\*Uncolored plumes mean only White(W) color since 1st April, 2010.

Satsuma-Iojima: May,2014



(46)口永良部島

震動観測(Seismic Observation)

Observation Point: KER1

|   | 月計<br>total | 最大(起日)<br>max (date) |
|---|-------------|----------------------|
| 火山性地震回数(Number of volcanic earthquakes)     | 133         | 16 (10)              |
| 火山性微動回数(Number of volcanic tremors)         | 42          | 6 (5)                |
| 微動継続時間(Duration of volcanic tremors) (min.) | 43          | 5 (5)                |

Note: KER1 (N30°26.86' E130°12.86' H566m)

遠望観測(Visual Observation)

最大(起日) max (date)

|                                       |           |
|---------------------------------------|-----------|
| 噴煙量(Quantity of plumes) (JMA's scale) | 1 (abbr.) |
| 噴煙の高さ(Height of plumes) (m)           | 200 (18)  |

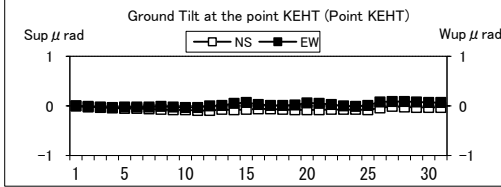
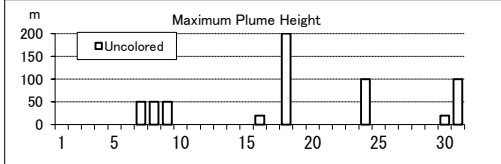
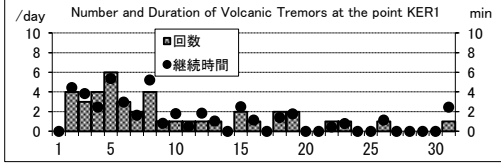
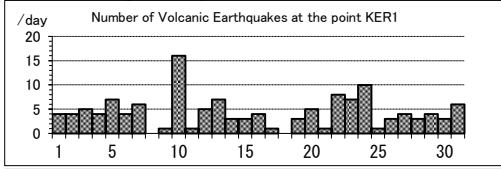
|                                  |   |
|----------------------------------|---|
| 噴煙の色(Color of plumes)            | W |
| 他の火山現象(Other volcanic phenomena) | - |

Note: Uncolored:Plume color was White(W)\*

Colored:Plume color was Light white(LW), Grayish white(GW), Gray(G) and other.

\*Uncolored plumes mean only White(W) color since 1st April, 2010.

Kuchinoerabujima: May,2014



(47)諏訪之瀬島

震動観測(Seismic Observation)

Observation Point: SWA1

|   | 月計<br>total | 最大(起日)<br>max (date) |
|---|-------------|----------------------|
| 火山性地震回数(Number of volcanic earthquakes)     | 283         | 38 (25)              |
| 火山性微動回数(Number of volcanic tremors)         | 98          | 20 (26)              |
| 微動継続時間(Duration of volcanic tremors) (min.) | 6265        | 1295 (11)            |

Note: SWA1 (N29°37.73' E129°42.27' H450m)

\* Continuous volcanic tremors occurred intermittently in this month.

遠望観測(Visual Observation)

最大(起日) max (date)

|                                     |   |   |
|-------------------------------------|---|---|
| 爆発回数(Number of explosive eruptions) | - | - |
|-------------------------------------|---|---|

|                                       |          |
|---------------------------------------|----------|
| 噴煙量(Quantity of plumes) (JMA's scale) | 2 (23)   |
| 噴煙の高さ(Height of plumes) (m)           | 500 (23) |

|                                  |      |
|----------------------------------|------|
| 噴煙の色(Color of plumes)            | W,GW |
| 他の火山現象(Other volcanic phenomena) | GI   |

Note: Uncolored:Plume color was White(W)\*

Colored:Plume color was Light white(LW), Grayish white(GW), Gray(G) and other.

\*Uncolored plumes mean only White(W) color since 1st April, 2010.

Suwanosejima: May,2014

