

火山観測 Summary of Observations on Volcanoes

常時観測 平成24年(2012年)2月

Continuous Observation in February,2012

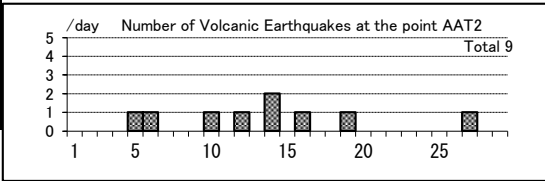
(1)アトサヌプリ

震動観測(Seismic Observation)

Observation Point: AAT2	月計 total	最大(起日) max (date)
火山性地震回数(Number of volcanic earthquakes)	9	2 (14)
火山性微動回数(Number of volcanic tremors)	-	-
微動継続時間(Duration of volcanic tremors) (min.)	-	-

Note: AAT2 (N43°37.11' E144°27.01' H156m)

Atosanupuri: February,2012



遠望観測(Visual Observation)

	最大(起日) max (date)
噴煙量(Quantity of plumes) (JMA's scale)	1 (abbr.)
噴煙の高さ(Height of plumes) (m)	300 (17)

噴煙の色(Color of plumes)	W
他の火山現象(Other volcanic phenomena)	-

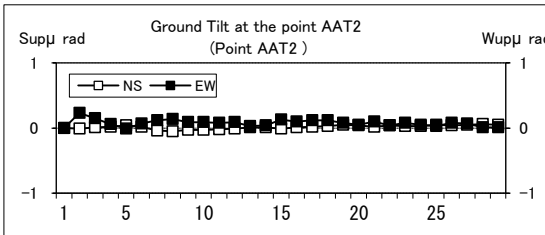
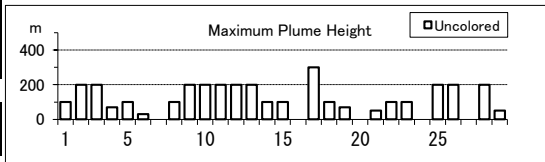
Note: Plumes were from Upper part of F1 Fumaroles(Location U),

Middle part of F1 Fumaroles(M) Lower part of

F1 Fumaroles(L) and/or F2 Fumaroles(F)

Note: Uncolored:Plume color was White(W).

Colored:Plume color was Light white(LW), Grayish white(GW), Gray(G) and other.



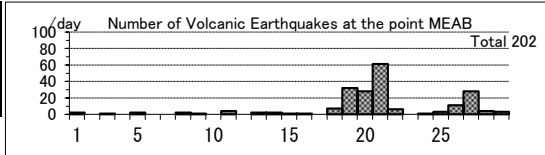
(2)雌阿寒岳

震動観測(Seismic Observation)

Observation Point: MEAB	月計 total	最大(起日) max (date)
火山性地震回数(Number of volcanic earthquakes)	202	61 (21)
火山性微動回数(Number of volcanic tremors)	-	-
微動継続時間(Duration of volcanic tremors) (min.)	-	-

Note: MEAB (N43°22.78' E143°58.65' H680m)

Meakandake: February,2012



遠望観測(Visual Observation)

	最大(起日) max (date)
噴煙量(Quantity of plumes) (JMA's scale)	1 (abbr.)
噴煙の高さ(Height of plumes) (m)	200 (abbr.)

噴煙の色(Color of plumes)	W
他の火山現象(Other volcanic phenomena)	-

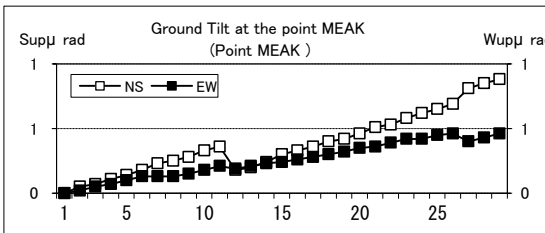
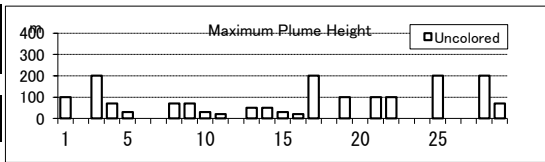
Note: Plumes were from the Ponmachineshiri Summit Crater(Location T),

the Nakamachineshiri Crater(U), the Akanuma Crater(M) and/or

Ponmachineshiri NW Fumaroles(N).

Note: Uncolored:Plume color was White(W).

Colored:Plume color was Light white(LW), Grayish white(GW), Gray(G) and other.



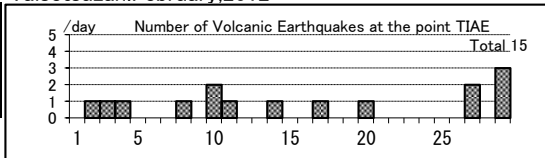
(3)大雪山

震動観測(Seismic Observation)

Observation Point: TIAE	月計 total	最大(起日) max (date)
火山性地震回数(Number of volcanic earthquakes)	15	3 (29)
火山性微動回数(Number of volcanic tremors)	-	-
微動継続時間(Duration of volcanic tremors) (min.)	-	-

Note: TIAE (N43°39.66' E142°49.62' H1607m)

Taisetsuzan:February,2012



遠望観測(Visual Observation)

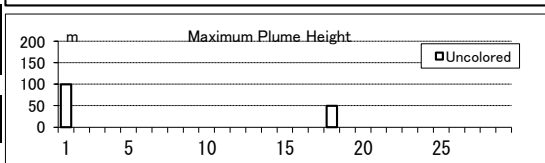
	最大(起日) max (date)
噴煙量(Quantity of plumes) (JMA's scale)	1 (1,18)
噴煙の高さ(Height of plumes) (m)	100 (1)

噴煙の色(Color of plumes)	W
他の火山現象(Other volcanic phenomena)	-

Note: Plumes were from 1 Fumaroles(Location I)

Note: Uncolored:Plume color was White(W).

Colored:Plume color was Light white(LW), Grayish white(GW), Gray(G) and other.



(4)十勝岳

震動観測(Seismic Observation) Observation Point: TOKH	月計 total	最大(起日) max (date)
火山性地震回数(Number of volcanic earthquakes)	66	25 (23)
火山性微動回数(Number of volcanic tremors)	-	-
微動継続時間(Duration of volcanic tremors) (min.)	-	-

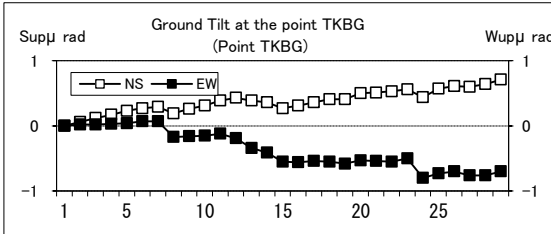
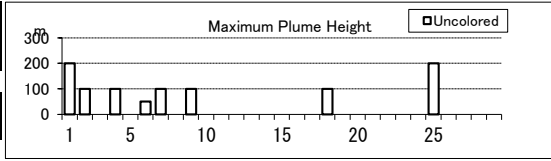
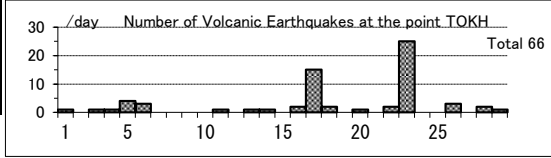
Note: TOKH (N43°25.96' E142°40.15' H1,355m)

遠望観測(Visual Observation)	最大(起日) max (date)
噴煙量(Quantity of plumes) (JMA's scale)	1 (abbr.)
噴煙の高さ(Height of plumes) (m)	200 (1,25)

噴煙の色(Color of plumes)	W
他の火山現象(Other volcanic phenomena)	-

Note: Plumes were from the Taisho Crater(Location X), the 62 crater Area(P,Q,Y),the Furikozawa Fumaroles (F) and/or the Kyufun Crater (Z).
Note: Uncolored:Plume color was White(W).
Colored:Plume color was Light white(LW), Grayish white(GW), Gray(G) and other.

Tokachidake: February,2012



(5)樽前山

震動観測(Seismic Observation) Observation Point: TARC	月計 total	最大(起日) max (date)
火山性地震回数(Number of volcanic earthquakes)	46	5 (4)
火山性微動回数(Number of volcanic tremors)	-	-
微動継続時間(Duration of volcanic tremors) (min.)	-	-

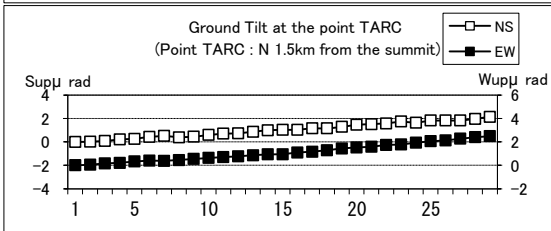
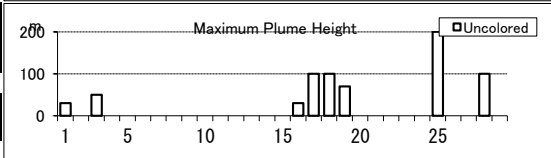
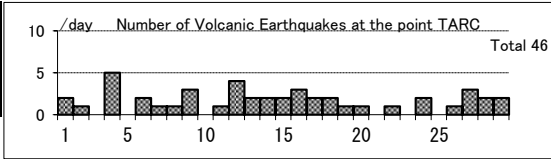
Note: TARC (N42°42.23' E141°22.64' H638m)

遠望観測(Visual Observation)	最大(起日) max (date)
噴煙量(Quantity of plumes) (JMA's scale)	1 (abbr.)
噴煙の高さ(Height of plumes) (m)	200 (25)

噴煙の色(Color of plumes)	W
他の火山現象(Other volcanic phenomena)	-

Note: Plumes were from the Summit Area(Location A, B and/or E).
Note: Uncolored:Plume color was White(W).
Colored:Plume color was Light white(LW), Grayish white(GW), Gray(G) and other.

Tarumaesan: February,2012



(6)倶多楽

震動観測(Seismic Observation) Observation Point: KUJG	月計 total	最大(起日) max (date)
火山性地震回数(Number of volcanic earthquakes)	-	-
火山性微動回数(Number of volcanic tremors)	-	-
微動継続時間(Duration of volcanic tremors) (min.)	-	-

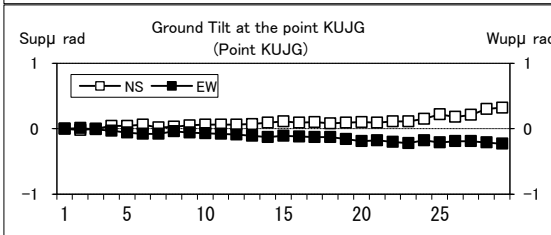
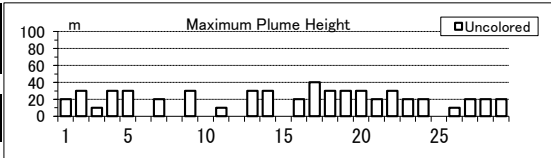
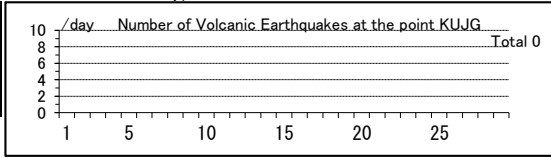
Note:KUJG (N42°29.50' E141°07.68' H327m)

遠望観測(Visual Observation)	最大(起日) max (date)
噴煙量(Quantity of plumes) (JMA's scale)	1 (abbr.)
噴煙の高さ(Height of plumes) (m)	40 (17)

噴煙の色(Color of plumes)	W
他の火山現象(Other volcanic phenomena)	-

Note: Plumes were from Hiyoriyama Fumarole(Location H)
Note: Uncolored:Plume color was White(W).
Colored:Plume color was Light white(LW), Grayish white(GW), Gray(G) and other.

Kuttara: February,2012



(7)有珠山

震動観測(Seismic Observation)	月計 total	最大(起日) max (date)
Observation Point: USUA		
火山性地震回数(Number of volcanic earthquakes)	16	6 (1)
火山性微動回数(Number of volcanic tremors)	-	-
微動継続時間(Duration of volcanic tremors) (min.)	-	-

Note: USUA (N42°31.70' E140°50.17' H246m)

遠望観測(Visual Observation)	最大(起日) max (date)
噴煙量(Quantity of plumes) (JMA's scale)	1 (abbr.)
噴煙の高さ(Height of plumes) (m)	100 (17,19)

噴煙の色(Color of plumes)	W
他の火山現象(Other volcanic phenomena)	-

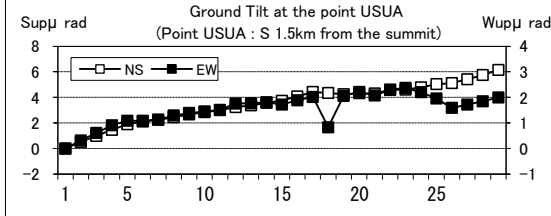
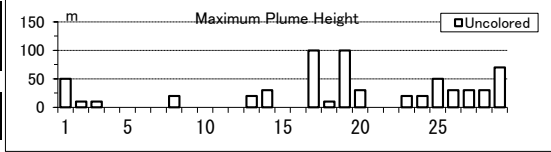
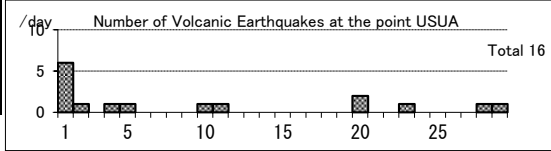
Note: Plumes were from the Summit Area of Usuzan(Location P) ,

Mt.showa-shinazan(Z), Nishi-yama vent group(N) and Konpira-yama vent group(K).

Note: Uncolored:Plume color was White(W).

Colored:Plume color was Light white(LW), Grayish white(GW), Gray(G) and other.

Usuzan: February,2012



(8)北海道駒ヶ岳

震動観測(Seismic Observation)	月計 total	最大(起日) max (date)
Observation Point: KOMA		
火山性地震回数(Number of volcanic earthquakes)	-	-
火山性微動回数(Number of volcanic tremors)	-	-
微動継続時間(Duration of volcanic tremors) (min.)	-	-

Note: KOMA (N42°03.19' E140°38.29' H265m)

遠望観測(Visual Observation)	最大(起日) max (date)
噴煙量(Quantity of plumes) (JMA's scale)	-
噴煙の高さ(Height of plumes) (m)	-

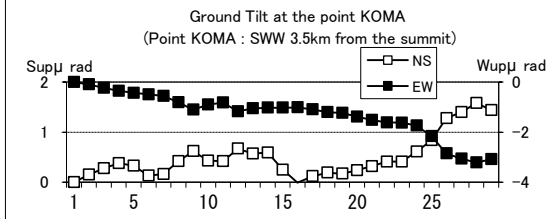
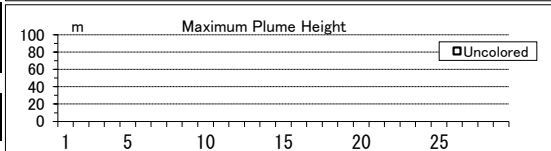
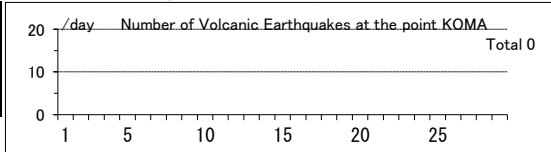
噴煙の色(Color of plumes)	-
他の火山現象(Other volcanic phenomena)	-

Note: Plumes were from the Showa-4 Crater(Location D1) and/or the 96 South Crater(D2).

Note: Uncolored:Plume color was White(W).

Colored:Plume color was Light white(LW), Grayish white(GW), Gray(G) and other.

Hokkaido-Komagatake: February,2012



(9)恵山

震動観測(Seismic Observation)	月計 total	最大(起日) max (date)
Observation Point: ESDK		
火山性地震回数(Number of volcanic earthquakes)	18	3 (20,23,29)
火山性微動回数(Number of volcanic tremors)	-	-
微動継続時間(Duration of volcanic tremors) (min.)	-	-

Note: ESDK (N41°48.69' E141°09.73' H369m)

遠望観測(Visual Observation)	最大(起日) max (date)
噴煙量(Quantity of plumes) (JMA's scale)	1 (abbr.)
噴煙の高さ(Height of plumes) (m)	100 (abbr.)

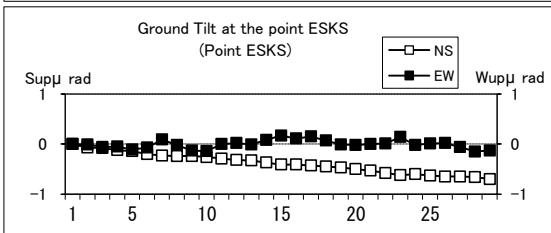
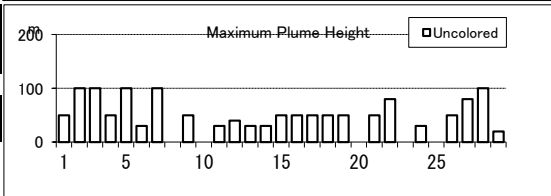
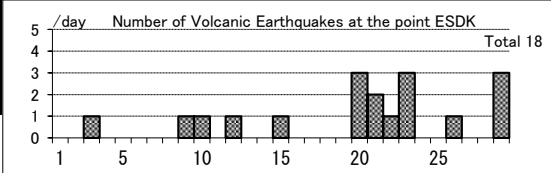
噴煙の色(Color of plumes)	W
他の火山現象(Other volcanic phenomena)	-

Note: Plumes were from X Crater(Location X), Y Crater(Y)

Note: Uncolored:Plume color was White(W).

Colored:Plume color was Light white(LW), Grayish white(GW), Gray(G) and other.

Esan: February,2012



(10)岩木山

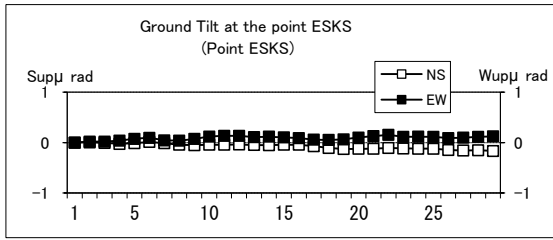
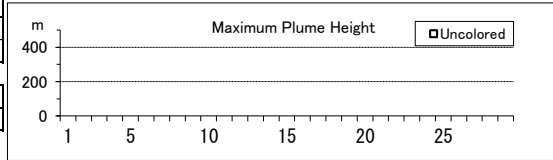
遠望観測(Visual Observation)		最大(起日) max (date)
噴煙量(Quantity of plumes) (JMA's scale)	-	
噴煙の高さ(Height of plumes) (m)	-	
噴煙の色(Color of plumes)	-	
他の火山現象(Other volcanic phenomena)	-	

Note: Plumes were from Iwaki Summit

Note: Uncolored:Plume color was White(W).

Colored:Plume color was Light white(LW), Grayish white(GW), Gray(G) and other.

Iwakisan: February,2012

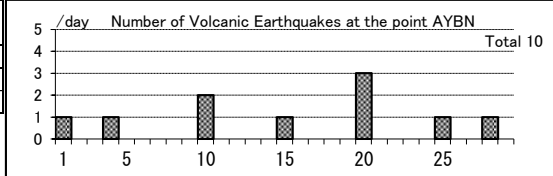


(11)秋田焼山

震動観測(Seismic Observation)		月計 total	最大(起日) max (date)
Observation Point: AYBN			
火山性地震回数(Number of volcanic earthquakes)	10	3 (20)	
火山性微動回数(Number of volcanic tremors)	-	-	
微動継続時間(Duration of volcanic tremors) (min.)	-	-	

Note: AYBN (N39°56.72' E140°43.17' H738m)

Akita-Yakeyama : February,2012



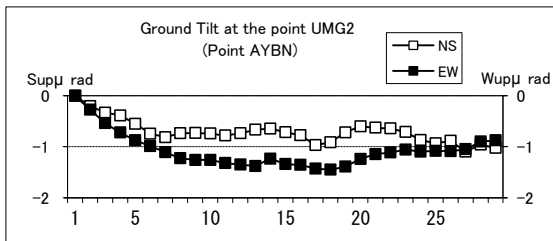
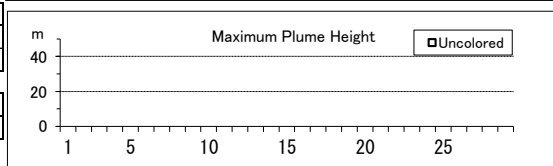
遠望観測(Visual Observation)		最大(起日) max (date)
噴煙量(Quantity of plumes) (JMA's scale)	-	
噴煙の高さ(Height of plumes) (m)	-	

噴煙の色(Color of plumes)	-
他の火山現象(Other volcanic phenomena)	-

Note: Plumes were from Yakeyama Summit

Note: Uncolored:Plume color was White(W).

Colored:Plume color was Light white(LW), Grayish white(GW), Gray(G) and other.

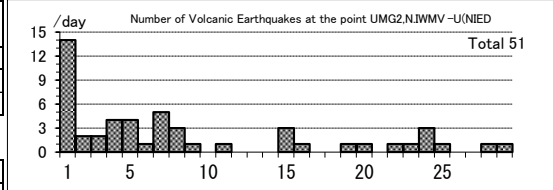


(12)岩手山

震動観測(Seismic Observation)		月計 total	最大(起日) max (date)
Observation Point: UMG2,N,IWMV-U(NIED)			
火山性地震回数(Number of volcanic earthquakes)	51	14 (1)	
火山性微動回数(Number of volcanic tremors)	-	-	
微動継続時間(Duration of volcanic tremors) (min.)	-	-	

Note:UMG2 (N39°49.94' E141°02.45' H609m),NIWMV-U(NIED) (N39°53.01' E140°56.14' H804m)

Iwatesan: February,2012



遠望観測(Visual Observation)		最大(起日) max (date)
噴煙量(Quantity of plumes) (JMA's scale)	1 (20,28,29)	
噴煙の高さ(Height of plumes) (m)	10 (20,28,29)	

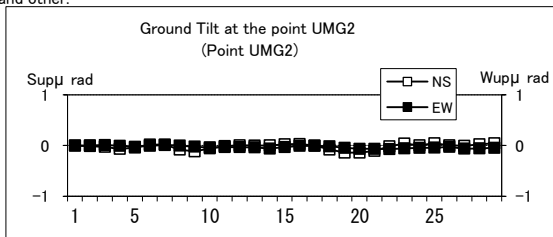
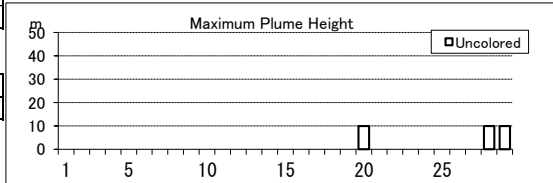
噴煙の色(Color of plumes)	W
他の火山現象(Other volcanic phenomena)	-

Note: Plumes were from the Kurokurayama Summit(LocationX), the Ojigokudani(Y-6)

Note: Uncolored:Plume color was White(W).*

Colored:Plume color was Light white(LW), Grayish white(GW), Gray(G) and other.

*Uncolored plumes mean only White(W) color since 1st April, 2010.



(13)秋田駒ヶ岳

遠望観測(Visual Observation)	最大(起日) max (date)
噴煙量(Quantity of plumes) (JMA's scale)	1 (29)
噴煙の高さ(Height of plumes) (m)	30 (29)

噴煙の色(Color of plumes)	W
他の火山現象(Other volcanic phenomena)	-

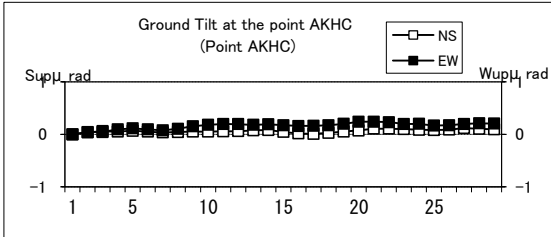
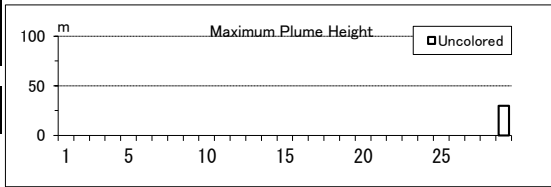
Note: Plumes were from Medake Summit(Location Z-1a), Geothermal area on the N part of Medake Summit(Z-1b), W part of Medake Summit(Z-1c),

Geothermal area on the NE slope of Medake Summit(Z-1d) and/or Crater on the E part of Medake Summit(Z-1e)

Note: Uncolored:Plume color was White(W).

Colored:Plume color was Light white(LW), Grayish white(GW), Gray(G) and other.

Akita-Komagatake: February.2012

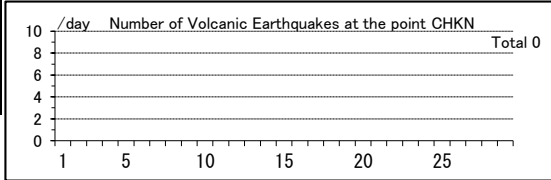


(14)鳥海山

地震観測(Seismic Observation)	月計 total	最大(起日) max (date)
Observation Point: CHKN		
火山性地震回数(Number of volcanic earthquakes)	-	-
火山性微動回数(Number of volcanic tremors)	-	-
微動継続時間(Duration of volcanic tremors) (min.)	-	-

Note: CHKN (N39°07.75' E139°56.36' H335m)

Chokkaisan: February.2012



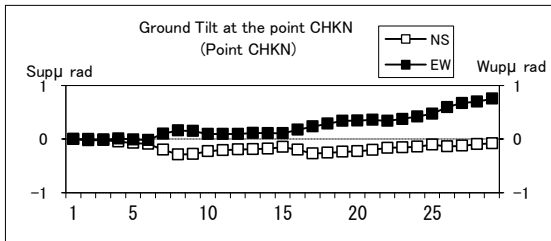
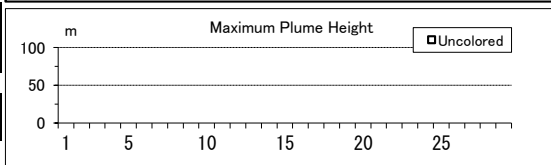
遠望観測(Visual Observation)	最大(起日) max (date)
噴煙量(Quantity of plumes) (JMA's scale)	-
噴煙の高さ(Height of plumes) (m)	-

噴煙の色(Color of plumes)	-
他の火山現象(Other volcanic phenomena)	-

Note: Plumes were from Sin Summit(Location Y)

Note: Uncolored:Plume color was White(W).

Colored:Plume color was Light white(LW), Grayish white(GW), Gray(G) and other.

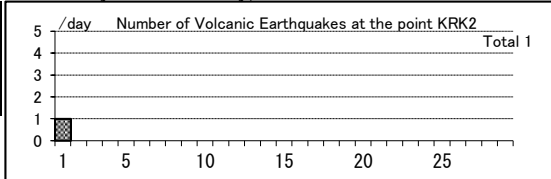


(15)栗駒山

地震観測(Seismic Observation)	月計 total	最大(起日) max (date)
Observation Point: KRK2		
火山性地震回数(Number of volcanic earthquakes)	1	1 (1)
火山性微動回数(Number of volcanic tremors)	-	-
微動継続時間(Duration of volcanic tremors) (min.)	-	-

Note: KRK2 (N38°56.45' E140°49.08' H840m)

Kurikomayama: February.2012



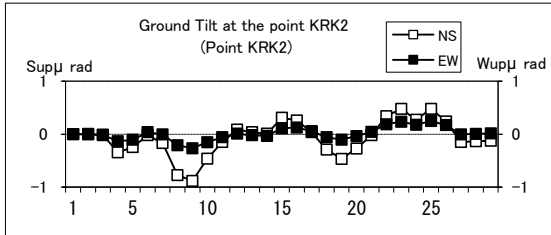
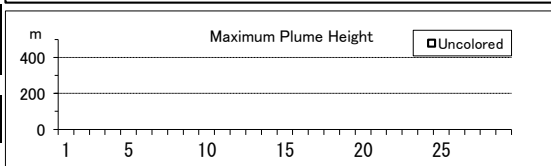
遠望観測(Visual Observation)	最大(起日) max (date)
噴煙量(Quantity of plumes) (JMA's scale)	-
噴煙の高さ(Height of plumes) (m)	-

噴煙の色(Color of plumes)	-
他の火山現象(Other volcanic phenomena)	-

Note: Plumes were from Showa Lake(Location Z-1),Old Crater (W-1)

Note: Uncolored:Plume color was White(W).

Colored:Plume color was Light white(LW), Grayish white(GW), Gray(G) and other.



(16) 蔵王山

震動観測(Seismic Observation)	月計 total	最大(起日) max (date)
Observation Point: ZABD		
火山性地震回数(Number of volcanic earthquakes)	-	-
火山性微動回数(Number of volcanic tremors)	-	-
微動継続時間(Duration of volcanic tremors) (min.)	-	-

Note: ZABD (N38°07.33' E140°23.69' H1,012m)

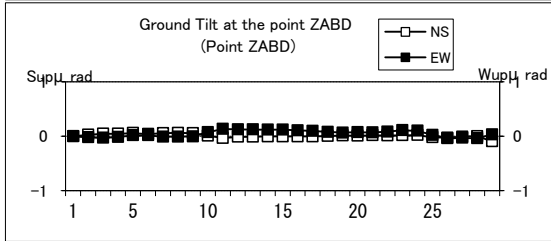
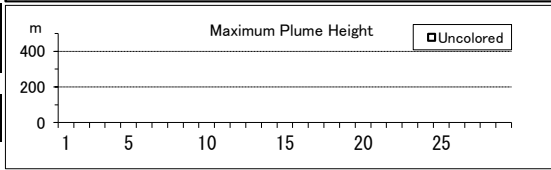
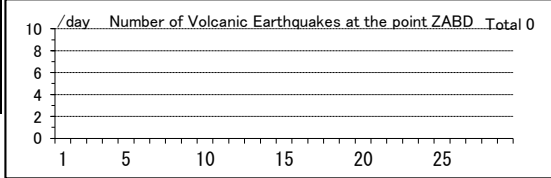
遠望観測(Visual Observation)	最大(起日) max (date)
噴煙量(Quantity of plumes) (JMA's scale)	-
噴煙の高さ(Height of plumes) (m)	-
噴煙の色(Color of plumes)	-
他の火山現象(Other volcanic phenomena)	-

Note: Plumes were from Okama(Location S-1b), Maruyamasawa(Y-2a)

Note: Uncolored:Plume color was White(W).

Colored:Plume color was Light white(LW), Grayish white(GW), Gray(G) and other.

Zaozan: February,2012



(17) 吾妻山

震動観測(Seismic Observation)	月計 total	最大(起日) max (date)
Observation Point: AZMA		
火山性地震回数(Number of volcanic earthquakes)	108	12 (4)
火山性微動回数(Number of volcanic tremors)	-	-
微動継続時間(Duration of volcanic tremors) (min.)	-	-

Note: AZMA (N37°43.34' E140°16.53' H1,295m)

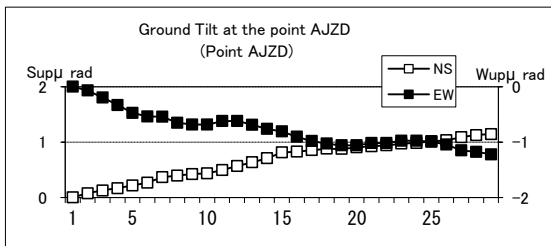
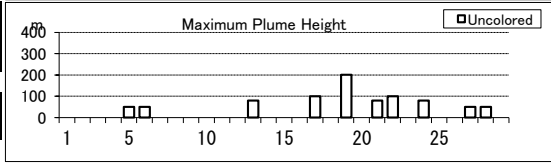
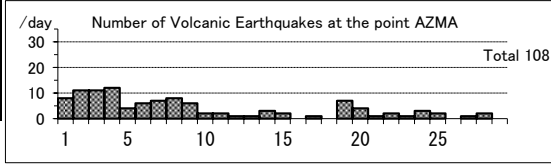
遠望観測(Visual Observation)	最大(起日) max (date)
噴煙量(Quantity of plumes) (JMA's scale)	1 (abbr.)
噴煙の高さ(Height of plumes) (m)	200 (19)
噴煙の色(Color of plumes)	W
他の火山現象(Other volcanic phenomena)	-

Note: Plumes were from the Oana Crater

Note: Uncolored:Plume color was White(W).

Colored:Plume color was Light white(LW), Grayish white(GW), Gray(G) and other.

Azumayama: February,2012



(18) 安達太良山

震動観測(Seismic Observation)	月計 total	最大(起日) max (date)
Observation Point: ADTB		
火山性地震回数(Number of volcanic earthquakes)	2	1 (9.16)
火山性微動回数(Number of volcanic tremors)	-	-
微動継続時間(Duration of volcanic tremors) (min.)	-	-

Note: ADTB(N37°38.05' E140°18.21' H1,320m)

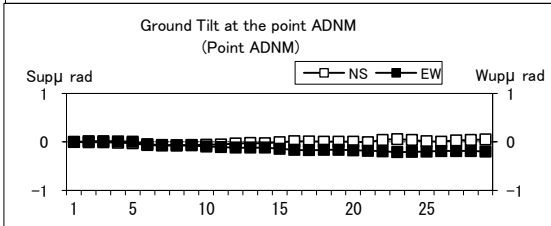
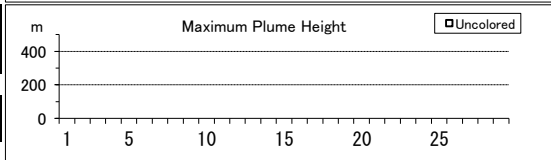
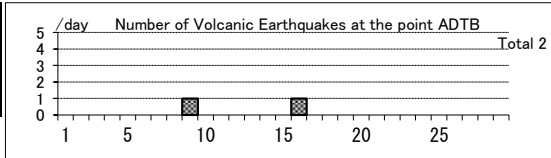
遠望観測(Visual Observation)	最大(起日) max (date)
噴煙量(Quantity of plumes) (JMA's scale)	-
噴煙の高さ(Height of plumes) (m)	-
噴煙の色(Color of plumes)	-
他の火山現象(Other volcanic phenomena)	-

Note: Plumes were from the Numandaira - SW area.

Note: Uncolored:Plume color was White(W).

Colored:Plume color was Light white(LW), Grayish white(GW), Gray(G)

Adatarayama: February,2012



(19)磐梯山

震動観測(Seismic Observation)	月計 total	最大(起日) max (date)
Observation Point: BND A	1	1 (abbr.)
火山性地震回数(Number of volcanic earthquakes)	4	1 (abbr.)
火山性微動回数(Number of volcanic tremors)	-	-
微動継続時間(Duration of volcanic tremors) (min.)	-	-

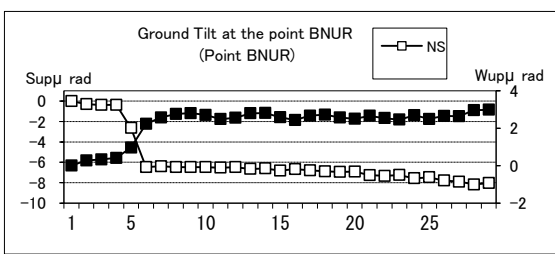
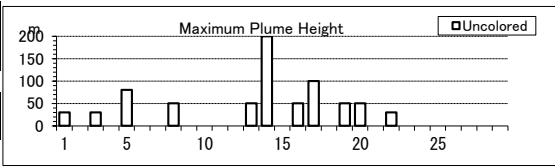
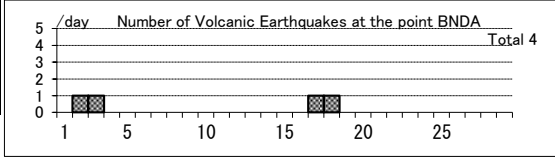
Note: BND A(N37°35.04' E140°04.79' H1000m)

遠望観測(Visual Observation)	最大(起日) max (date)
噴煙量(Quantity of plumes) (JMA's scale)	1 (abbr.)
噴煙の高さ(Height of plumes) (m)	200 (14)

噴煙の色(Color of plumes)	W
他の火山現象(Other volcanic phenomena)	-

Note: Plumes were from the Fumarolic area in Crater wall.
 Note: Uncolored:Plume color was White(W).
 Colored:Plume color was Light white(LW), Grayish white(GW), Gray(G) and other.

Bandaisan: February,2012



(20)那須岳

震動観測(Seismic Observation)	月計 total	最大(起日) max (date)
Observation Point: NSUA	8	2 (18)
火山性地震回数(Number of volcanic earthquakes)	8	2 (18)
火山性微動回数(Number of volcanic tremors)	-	-
微動継続時間(Duration of volcanic tremors) (min.)	-	-

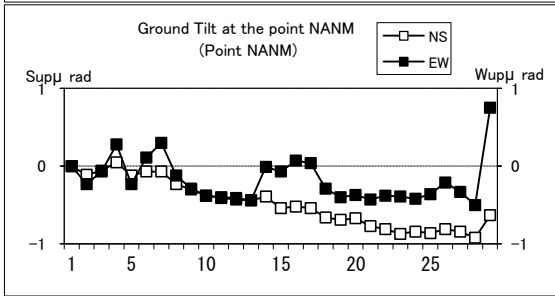
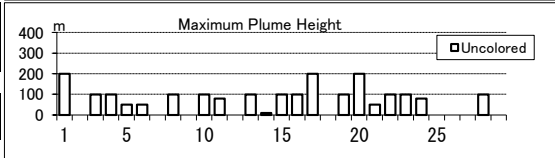
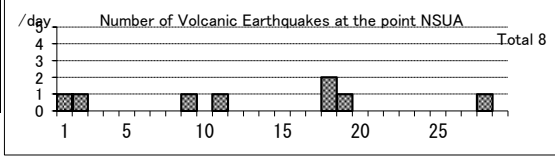
Note: NSUA (N37°06.38' E139°59.44' H1,083m)

遠望観測(Visual Observation)	最大(起日) max (date)
噴煙量(Quantity of plumes) (JMA's scale)	1 (abbr.)
噴煙の高さ(Height of plumes) (m)	200 (1,17,20)

噴煙の色(Color of plumes)	W
他の火山現象(Other volcanic phenomena)	-

Note: Plumes were from the west flank of Mt. Nasudake.
 Note: Uncolored:Plume color was White(W).
 Colored:Plume color was Light white(LW), Grayish white(GW), Gray(G) and other.

Nasudake: February,2012



(21)日光白根山

震動観測(Seismic Observation)	月計 total	最大(起日) max (date)
Observation Point: NSYG	2	1 (2,8)
火山性地震回数(Number of volcanic earthquakes)	2	1 (2,8)
火山性微動回数(Number of volcanic tremors)	-	-
微動継続時間(Duration of volcanic tremors) (min.)	-	-

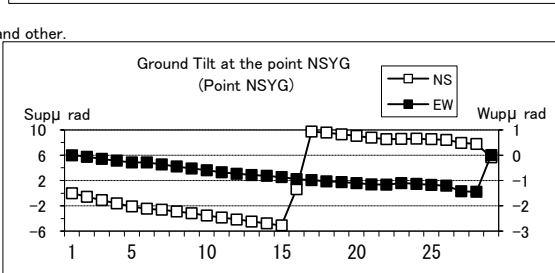
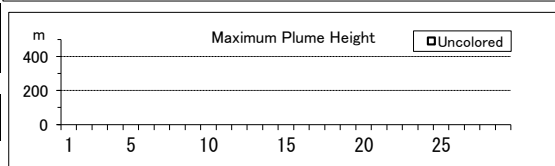
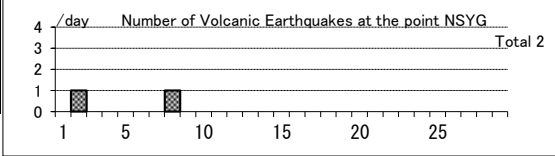
Note: NSYG (N36°48.22' E139°24.46' H1,642m)

遠望観測(Visual Observation)	最大(起日) max (date)
噴煙量(Quantity of plumes) (JMA's scale)	-
噴煙の高さ(Height of plumes) (m)	-

噴煙の色(Color of plumes)	-
他の火山現象(Other volcanic phenomena)	-

Note: Plumes were from Summit Area of Nikko-Shiranesan(Location A)
 Note: Uncolored:Plume color was White(W).
 Colored:Plume color was Light white(LW), Grayish white(GW), Gray(G) and other.

Nikko-Shiranesan: February,2012



(22)草津白根山

震動観測(Seismic Observation)

Observation Point: KSHA	月計 total	最大(起日) max (date)
火山性地震回数(Number of volcanic earthquakes)	67	7 (17)
火山性微動回数(Number of volcanic tremors)	-	-
微動継続時間(Duration of volcanic tremors) (min.)	-	-

Note: KSHA (N36°38.88' E138°32.73' H1,933m)

遠望観測(Visual Observation)

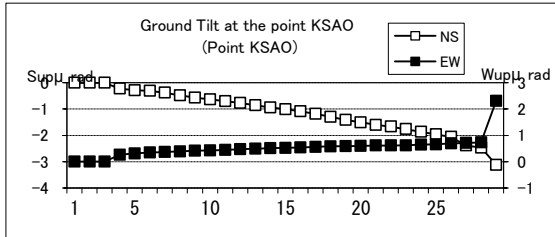
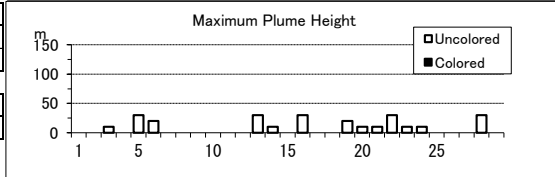
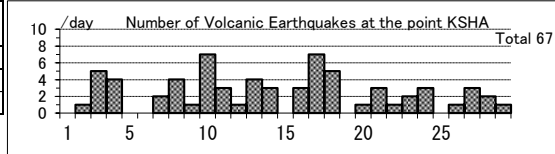
	最大(起日) max (date)
噴煙量(Quantity of plumes) (JMA's scale)	1 (abbr.)
噴煙の高さ(Height of plumes) (m)	30 (abbr.)
噴煙の色(Color of plumes)	W
他の火山現象(Other volcanic phenomena)	-

Note: Plumes were from the Yugama Crater and Fumaroles at northern side of Yugama Crater

Note: Uncolored:Plume color was White(W).

Colored:Plume color was Light white(LW), Grayish white(GW), Gray(G) and other.

Kusatsu-Shiranesan: February,2012



(23)浅間山

震動観測(Seismic Observation)

Observation Point: ASMB	月計 total	最大(起日) max (date)
火山性地震回数(Number of volcanic earthquakes)	263	21 (16)
火山性微動回数(Number of volcanic tremors)	-	-
微動継続時間(Duration of volcanic tremors) (min.)	-	-

Note: ASMB (N36°23.37' E138°31.13' H1,864m)

遠望観測(Visual Observation)

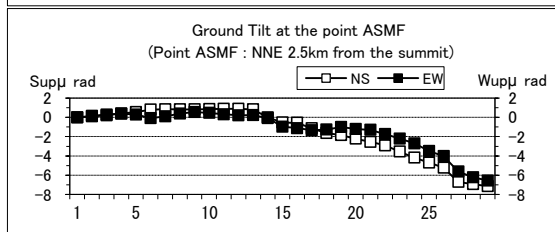
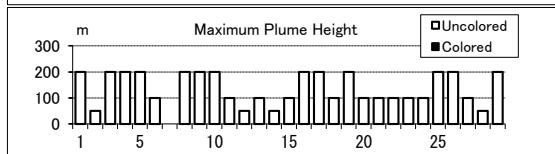
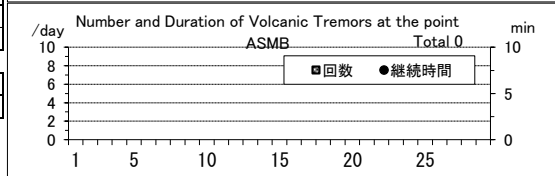
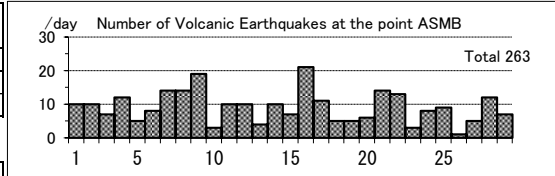
	最大(起日) max (date)
噴煙量(Quantity of plumes) (JMA's scale)	2 (abbr.)
噴煙の高さ(Height of plumes) (m)	200 (abbr.)
噴煙の色(Color of plumes)	W
他の火山現象(Other volcanic phenomena)	-

Note: Plumes were from the Kamayama Crater(Location A).

Note: Uncolored:Plume color was White(W).

Colored:Plume color was Light white(LW), Grayish white(GW), Gray(G) and other.

Asamayama: February,2012



(24)新潟焼山

震動観測(Seismic Observation)		
Observation Point: NYK2	月計 total	最大(起日) max (date)
火山性地震回数(Number of volcanic earthquakes)	4	2 (8)
火山性微動回数(Number of volcanic tremors)	-	-
微動継続時間(Duration of volcanic tremors) (min.)	-	-

Note: NYK2 (N36°57.35' E138°02.29' H1,147m)

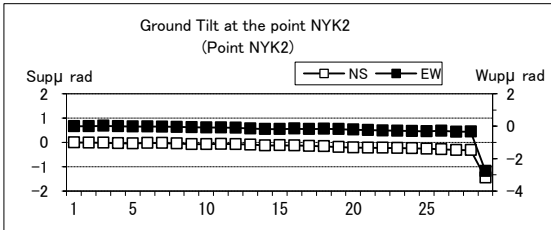
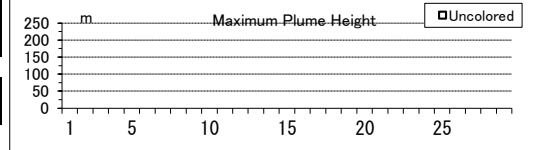
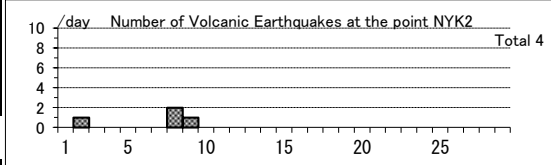
遠望観測(Visual Observation)		最大(起日) max (date)
噴煙量(Quantity of plumes) (JMA's scale)	-	-
噴煙の高さ(Height of plumes) (m)	-	-
噴煙の色(Color of plumes)	-	-
他の火山現象(Other volcanic phenomena)	-	-

Note: Plumes were from Upper East flank(Location A).

Note: Uncolored:Plume color was White(W).

Colored:Plume color was Light white(LW), Grayish white(GW), Gray(G) and other.

Niigata-Yakevama: February,2012

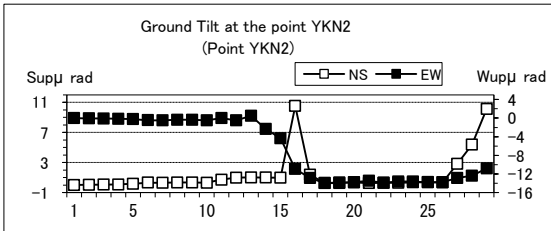
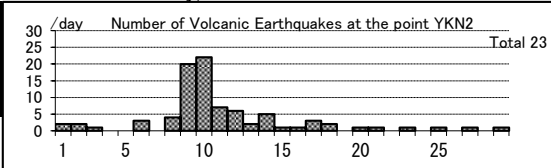


(25)焼岳

震動観測(Seismic Observation)		
Observation Point: YKN2	月計 total	最大(起日) max (date)
火山性地震回数(Number of volcanic earthquakes)	87	22 (8)
火山性微動回数(Number of volcanic tremors)	-	-
微動継続時間(Duration of volcanic tremors) (min.)	-	-

Note: YKN2 (N36°15.67' E137°34.45' H1,151m)

Yakedake February,2012

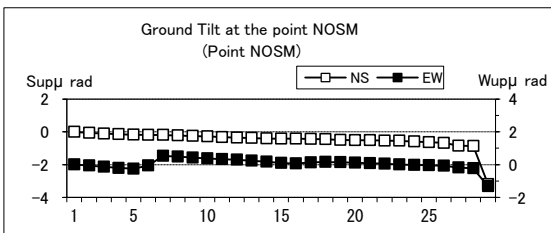
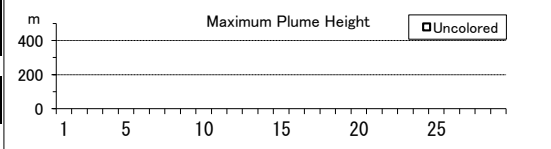
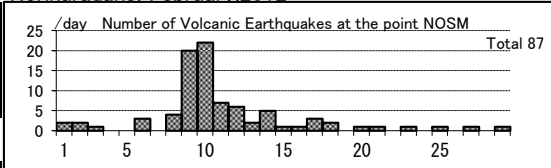


(26)乗鞍岳

震動観測(Seismic Observation)		
Observation Point: NOSM	月計 total	最大(起日) max (date)
火山性地震回数(Number of volcanic earthquakes)	87	22 (10)
火山性微動回数(Number of volcanic tremors)	-	-
微動継続時間(Duration of volcanic tremors) (min.)	-	-

Note: NOSM (N36°06.85' E137°35.81' H1,804m)

Norikuradake: February,2012



遠望観測(Visual Observation)		最大(起日) max (date)
噴煙量(Quantity of plumes) (JMA's scale)	-	-
噴煙の高さ(Height of plumes) (m)	-	-
噴煙の色(Color of plumes)	-	-
他の火山現象(Other volcanic phenomena)	-	-

Note: Plumes were from Summit Crater(Location A).

Note: Uncolored:Plume color was White(W).

Colored:Plume color was Light white(LW), Grayish white(GW), Gray(G) and other.

(27)御嶽山

震動観測(Seismic Observation)

Observation Point: ONTA	月計 total	最大(起日) max (date)
火山性地震回数(Number of volcanic earthquakes)	9	7 (21)
火山性微動回数(Number of volcanic tremors)	-	-
微動継続時間(Duration of volcanic tremors) (min.)	-	-

Note: ONTA (N35°52.61' E137°29.73' H2,228m)

遠望観測(Visual Observation)

	最大(起日) max (date)
噴煙量(Quantity of plumes) (JMA's scale)	1 (abbr.)
噴煙の高さ(Height of plumes) (m)	50 (abbr.)

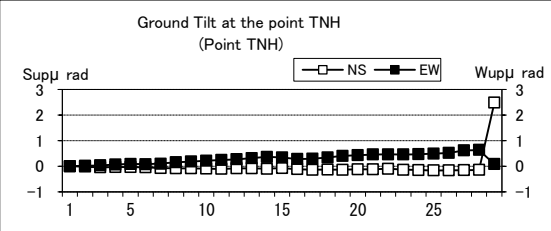
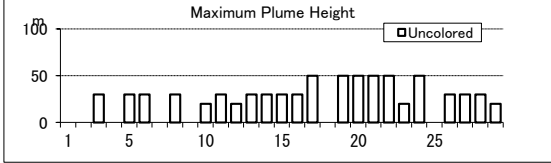
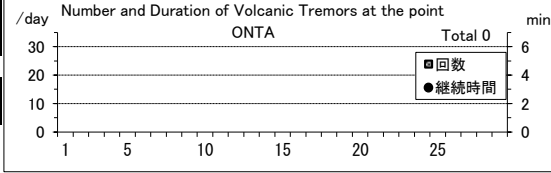
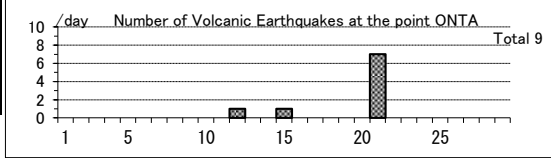
噴煙の色(Color of plumes)	W
他の火山現象(Other volcanic phenomena)	-

Note: Plumes were from the Otaki summit Crater (A) and/or S6

Note: Uncolored:Plume color was White(W).

Colored:Plume color was Light white(LW), Grayish white(GW), Gray(G) and other.

Ontakesan: February,2012



(28)白山

震動観測(Seismic Observation)

Observation Point: HSMD	月計 total	最大(起日) max (date)
火山性地震回数(Number of volcanic earthquakes)	16	5 (21)
火山性微動回数(Number of volcanic tremors)	-	-
微動継続時間(Duration of volcanic tremors) (min.)	-	-

Note: HSMD (N36°08.78' E136°45.86' H2,345m)

遠望観測(Visual Observation)

	最大(起日) max (date)
噴煙量(Quantity of plumes) (JMA's scale)	-
噴煙の高さ(Height of plumes) (m)	-

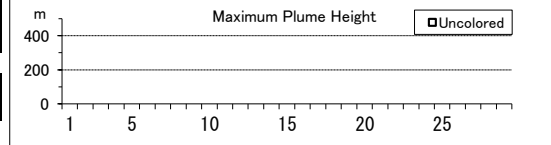
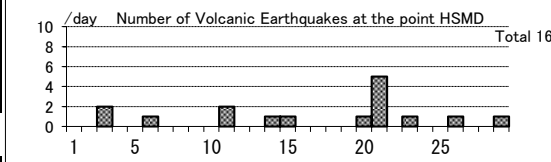
噴煙の色(Color of plumes)	-
他の火山現象(Other volcanic phenomena)	-

Note: Plumes were from Summit Area of Hakusan(Location A)

Note: Uncolored:Plume color was White(W).

Colored:Plume color was Light white(LW), Grayish white(GW), Gray(G) and other.

Hakusan: February,2012



(29)富士山

震動観測(Seismic Observation)

Observation Point: N.FJ5V-U(NIED)	月計 total	最大(起日) max (date)
火山性地震回数(Number of volcanic earthquakes)	59	7 (17)
火山性微動回数(Number of volcanic tremors)	-	-
微動継続時間(Duration of volcanic tremors) (min.)	-	-

Note: N.FJ5V-U(NIED) (N35°23.08' E138°41.72' H2,090m)

遠望観測(Visual Observation)

	最大(起日) max (date)
噴煙量(Quantity of plumes) (JMA's scale)	-
噴煙の高さ(Height of plumes) (m)	-

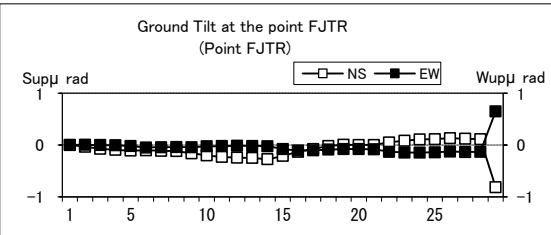
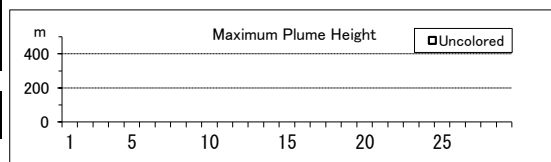
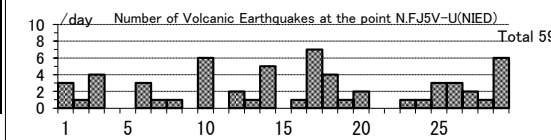
噴煙の色(Color of plumes)	-
他の火山現象(Other volcanic phenomena)	-

Note: Plumes were from Summit Crater(Location A),Hoei Crater(B)

Note: Uncolored:Plume color was White(W).

Colored:Plume color was Light white(LW), Grayish white(GW), Gray(G) and other.

Fujiisan: February,2012



(30)箱根山

震動観測(Seismic Observation)	月計 total	最大(起日) max (date)
Observation Point: OK.KOM		
火山性地震回数(Number of volcanic earthquakes)	2	1 (23,29)
火山性微動回数(Number of volcanic tremors)	-	-
微動継続時間(Duration of volcanic tremors) (min.)	-	-

Note: OK.KOM(N35°13.2' E139°02.0' H1,049m)

遠望観測(Visual Observation)	最大(起日) max (date)
噴煙量(Quantity of plumes) (JMA's scale)	1 (abbr.)
噴煙の高さ(Height of plumes) (m)	200 (abbr.)

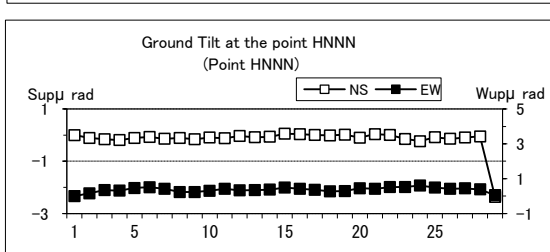
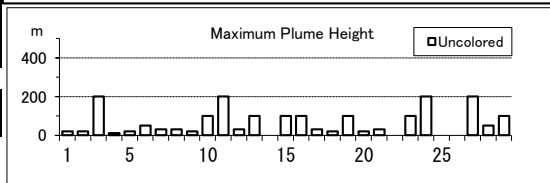
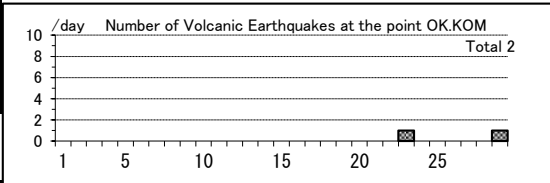
噴煙の色(Color of plumes)	W
他の火山現象(Other volcanic phenomena)	-

Note: Plumes were from Fumaroles near Owakudani(Location A), Fumaroles near Soujigoku(B)

Note: Uncolored:Plume color was White(W).

Colored:Plume color was Light white(LW), Grayish white(GW), Gray(G) and other.

Hakonevama: February,2012



(31)伊豆東部火山群

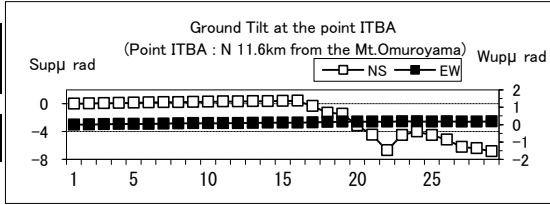
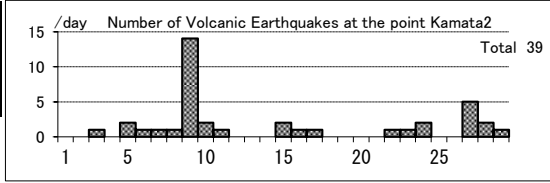
震動観測(Seismic Observation)	月計 total	最大(起日) max (date)
Observation Point: ITBA,Kamata2		
火山性地震回数(Number of volcanic earthquakes)	39	14 (9)
火山性微動回数(Number of volcanic tremors)	-	-
微動継続時間(Duration of volcanic tremors) (min.)	-	-

Note: ITBA (N35°00.46' E139°05.87' H12m)
Kamata2(N34°55.71' E139°03.65' H175m)

遠望観測(Visual Observation)	最大(起日) max (date)
噴煙量(Quantity of plumes) (JMA's scale)	-
噴煙の高さ(Height of plumes) (m)	-

噴煙の色(Color of plumes)	-
他の火山現象(Other volcanic phenomena)	-

Izu-Tobu Volcano Group: February,2012



(32)伊豆大島

震動観測(Seismic Observation)	月計 total	最大(起日) max (date)
Observation Point: OSMa		
火山性地震回数(Number of volcanic earthquakes)	43	7 (25,27)
火山性微動回数(Number of volcanic tremors)	-	-
微動継続時間(Duration of volcanic tremors) (min.)	-	-

Note: OSMa (N34°44.16' E139°23.21' H553m)

遠望観測(Visual Observation)	最大(起日) max (date)
噴煙量(Quantity of plumes) (JMA's scale)	1 (abbr.)
噴煙の高さ(Height of plumes) (m)	50 (13)

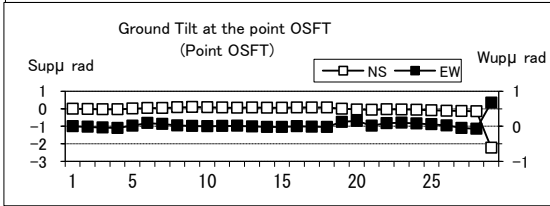
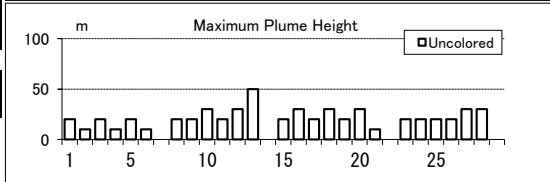
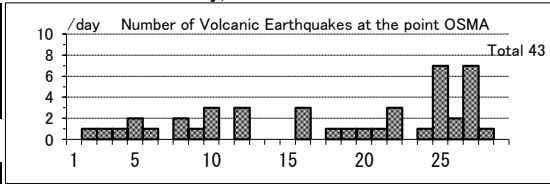
噴煙の色(Color of plumes)	W
他の火山現象(Other volcanic phenomena)	-

Note:Plumes were from the Miharayama Summit Crater(Location A), the Fumaroles at western side of Miharashinzan(A1), the Fumaroles near Kengamine(A2), the Fumaroles at eastern side of Miharashinzan(A3)

Note: Uncolored:Plume color was White(W).

Colored:Plume color was Light white(LW), Grayish white(GW), Gray(G) and other.

Izu-Oshima: February,2012



(33)新島

震動観測(Seismic Observation)

Observation Point: NIST	月計 total	最大(起日) max (date)
火山性地震回数(Number of volcanic earthquakes)	-	-
火山性微動回数(Number of volcanic tremors)	-	-
微動継続時間(Duration of volcanic tremors) (min.)	-	-

Note: NIST (N34°21.76' E139°14.92' H41m)

遠望観測(Visual Observation)

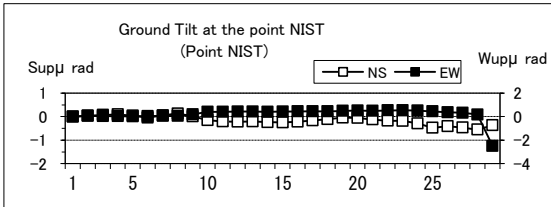
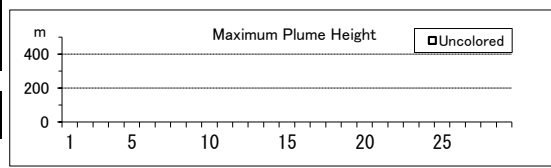
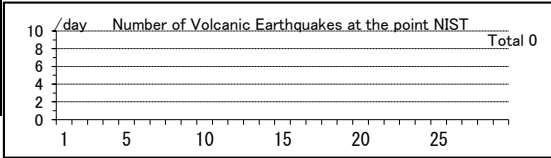
	最大(起日) max (date)
噴煙量(Quantity of plumes) (JMA's scale)	-
噴煙の高さ(Height of plumes) (m)	-
噴煙の色(Color of plumes)	-
他の火山現象(Other volcanic phenomena)	-

Note: Plumes were from Summit Area of Tangoyama(Location A)

Note: Uncolored:Plume color was White(W).

Colored:Plume color was Light white(LW), Grayish white(GW), Gray(G) and other.

Niiijima: February,2012



(34)神津島

震動観測(Seismic Observation)

Observation Point: KOTJ	月計 total	最大(起日) max (date)
火山性地震回数(Number of volcanic earthquakes)	-	-
火山性微動回数(Number of volcanic tremors)	-	-
微動継続時間(Duration of volcanic tremors) (min.)	-	-

Note: KOTJ (N34°13.24' E139°08.91' H372m)

遠望観測(Visual Observation)

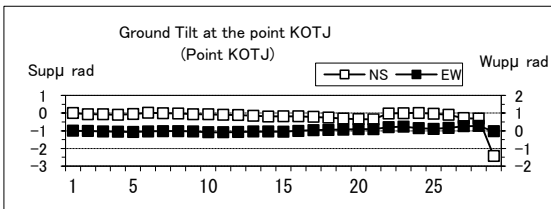
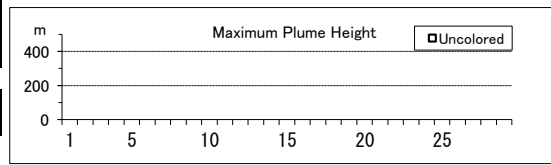
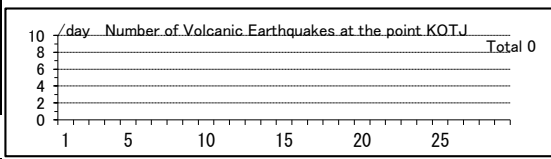
	最大(起日) max (date)
噴煙量(Quantity of plumes) (JMA's scale)	-
噴煙の高さ(Height of plumes) (m)	-
噴煙の色(Color of plumes)	-
他の火山現象(Other volcanic phenomena)	-

Note: Plumes were from Summit Area of Tenjosan(Location A)

Note: Uncolored:Plume color was White(W).

Colored:Plume color was Light white(LW), Grayish white(GW), Gray(G) and other.

Kozushima: February,2012



(35)三宅島

震動観測(Seismic Observation)

Observation Point: MKJA	月計 total	最大(起日) max (date)
火山性地震回数(Number of volcanic earthquakes)	106	17 (13)
火山性微動回数(Number of volcanic tremors)	-	-
微動継続時間(Duration of volcanic tremors) (min.)	-	-

Note: MKJA (N34°06.00' E139°31.92' H473m)

遠望観測(Visual Observation)

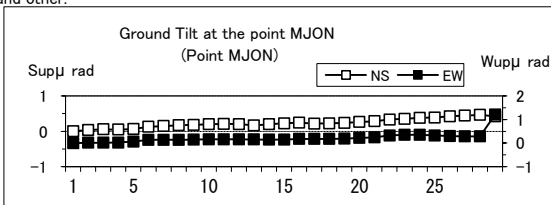
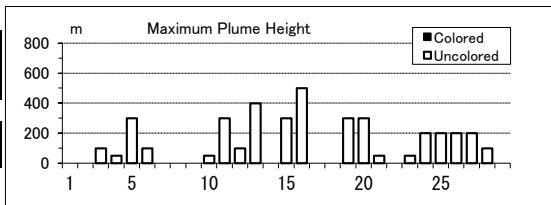
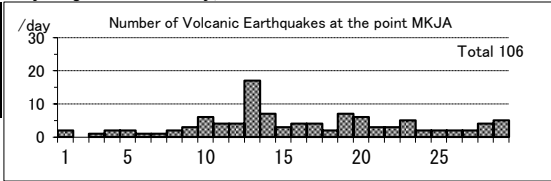
	最大(起日) max (date)
噴煙量(Quantity of plumes) (JMA's scale)	3 (13)
噴煙の高さ(Height of plumes) (m)	500 (16)
噴煙の色(Color of plumes)	W
他の火山現象(Other volcanic phenomena)	-

Note: Plumes were from the Summit Crater.

Note: Uncolored:Plume color was White(W).

Colored:Plume color was Light white(LW), Grayish white(GW), Gray(G) and other.

Miyakejima: February,2012

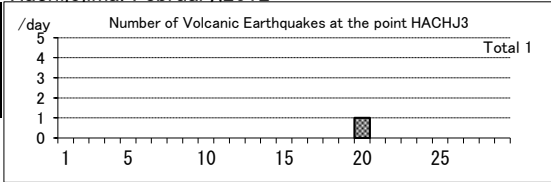


(36)八丈島

震動観測(Seismic Observation)	月計 total	最大(起日) max (date)
Observation Point: HACHJ3		
火山性地震回数(Number of volcanic earthquakes)	1	1 (20)
火山性微動回数(Number of volcanic tremors)	-	-
微動継続時間(Duration of volcanic tremors) (min.)	-	-

Note: HACHJ3 (N33 06.3 E139 47.1 H?m)

Hachijojima: February,2012

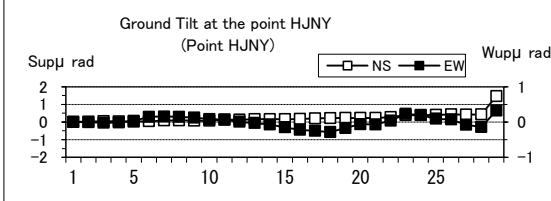
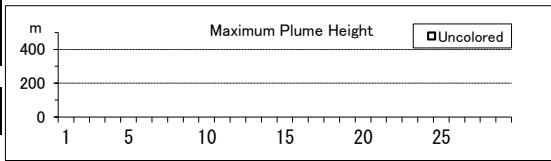


遠望観測(Visual Observation)	最大(起日) max (date)
噴煙量(Quantity of plumes) (JMA's scale)	-
噴煙の高さ(Height of plumes) (m)	-
噴煙の色(Color of plumes)	-
他の火山現象(Other volcanic phenomena)	-

Note: Plumes were from Nishiyama Crater(Location A)

Note: Uncolored:Plume color was White(W).

Colored:Plume color was Light white(LW), Grayish white(GW), Gray(G) and other.

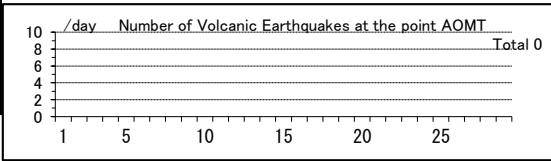


(37)青ヶ島

震動観測(Seismic Observation)	月計 total	最大(起日) max (date)
Observation Point: AOMT		
火山性地震回数(Number of volcanic earthquakes)	-	-
火山性微動回数(Number of volcanic tremors)	-	-
微動継続時間(Duration of volcanic tremors) (min.)	-	-

Note: AOMT (N32°28.02' E139°45.64' H273m)

Aogashima: February,2012

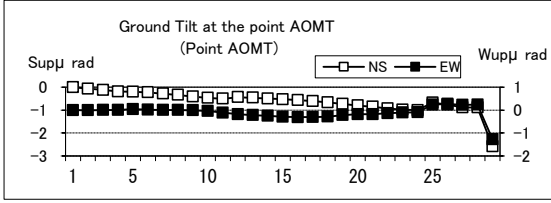
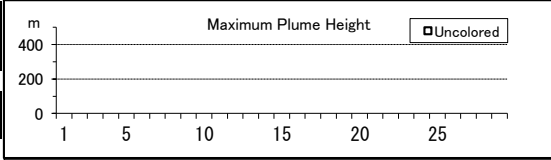


遠望観測(Visual Observation)	最大(起日) max (date)
噴煙量(Quantity of plumes) (JMA's scale)	-
噴煙の高さ(Height of plumes) (m)	-
噴煙の色(Color of plumes)	-
他の火山現象(Other volcanic phenomena)	-

Note: Plumes were from Western flank of Maruyama(Location A)

Note: Uncolored:Plume color was White(W).

Colored:Plume color was Light white(LW), Grayish white(GW), Gray(G) and other.



(38)硫黄島

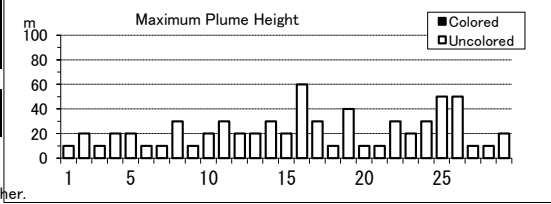
遠望観測(Visual Observation)	最大(起日) max (date)
噴煙量(Quantity of plumes) (JMA's scale)	1 (abbr.)
噴煙の高さ(Height of plumes) (m)	60 (16)
噴煙の色(Color of plumes)	W
他の火山現象(Other volcanic phenomena)	-

Note: Plumes were from Asodaikanbotsuko (Location A)and/or Idogahama (Location B)

Note: Uncolored:Plume color was White(W).

Colored:Plume color was Light white(LW), Grayish white(GW), Gray(G) and other.

Ioto: February,2012

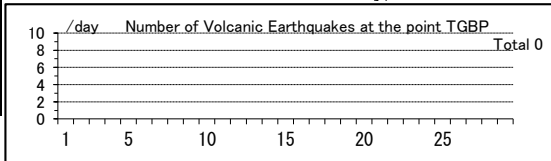


(39)鶴見岳・伽藍岳

震動観測(Seismic Observation)	月計 total	最大(起日) max (date)
Observation Point: TGBP		
火山性地震回数(Number of volcanic earthquakes)	-	-
火山性微動回数(Number of volcanic tremors)	-	-
微動継続時間(Duration of volcanic tremors) (min.)	-	-

Note: TGBP (N33°19.53' E131°27.07' H460m)

Tsurumidake and Garandake: February,2012

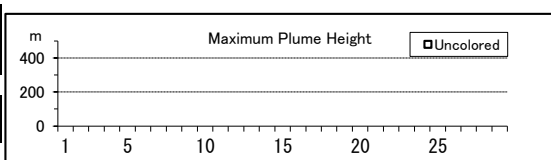


遠望観測(Visual Observation)	最大(起日) max (date)
噴煙量(Quantity of plumes) (JMA's scale)	-
噴煙の高さ(Height of plumes) (m)	-
噴煙の色(Color of plumes)	-
他の火山現象(Other volcanic phenomena)	-

Note: Plumes were from RegionA and/or RegionB.

Note: Uncolored:Plume color was White(W).

Colored:Plume color was Light white(LW), Grayish white(GW), Gray(G) and other.



(40)九重山

震動観測(Seismic Observation) Observation Point: KJA2	月計 total	最大(起日) max (date)
火山性地震回数(Number of volcanic earthquakes)	5	1 (abbr.)
火山性微動回数(Number of volcanic tremors)	-	-
微動継続時間(Duration of volcanic tremors) (min.)	-	-

Note: KJA2 (N33°06.20' E131°13.78' H1,282m)

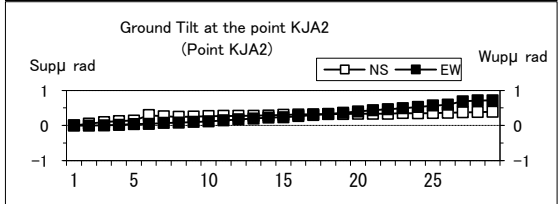
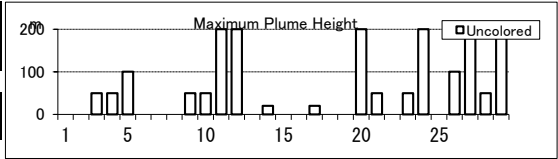
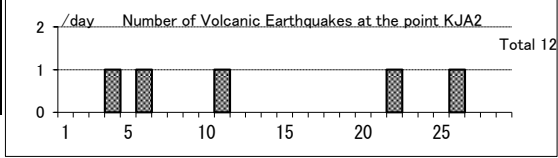
遠望観測(Visual Observation)	最大(起日) max (date)
噴煙量(Quantity of plumes) (JMA's scale)	1 (abbr.)
噴煙の高さ(Height of plumes) (m)	200 (abbr.)

噴煙の色(Color of plumes)	W
他の火山現象(Other volcanic phenomena)	-

Note: Plumes were from the east and/or north-east flank of Mt. Hossho (Location A,B,C or D).

Note: Uncolored:Plume color was White(W).
Colored:Plume color was Light white(LW), Grayish white(GW), Gray(G) and other.

Kujusan: February,2012



(41)阿蘇山

震動観測(Seismic Observation) Observation Point: ASOA	月計 total	最大(起日) max (date)
火山性地震回数(Number of volcanic earthquakes)	85	10 (6)
孤立型火山性微動回数 (Number of isolated volcanic tremors)	92	8 (15)

Note: ASOA (N32°53.10' E131°04.65' H1,163m)

遠望観測(Visual Observation)	最大(起日) max (date)
噴煙量(Quantity of plumes) (JMA's scale)	2 (19)
噴煙の高さ(Height of plumes) (m)	300 (abbr.)

噴煙の色(Color of plumes)	W
他の火山現象(Other volcanic phenomena)	-

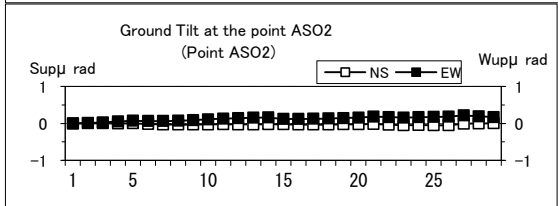
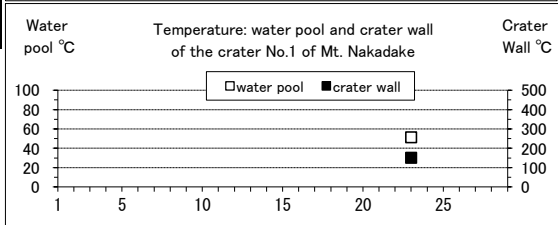
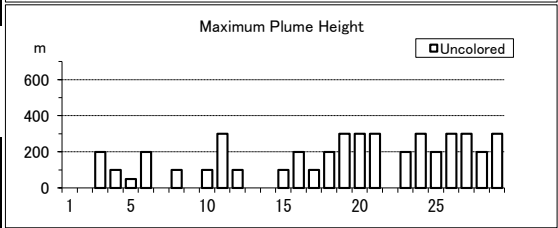
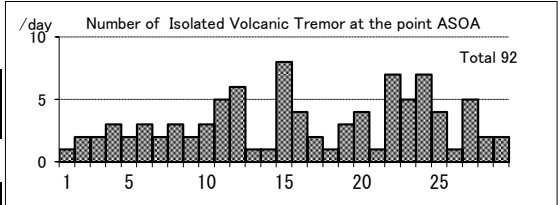
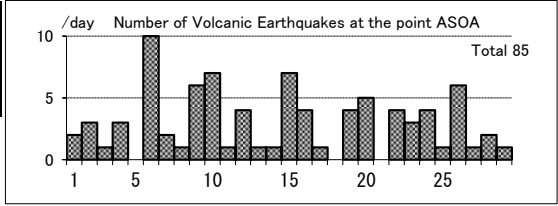
Note: Plumes were from the Crater No.1 of Mt. Nakadake.

Note: Uncolored:Plume color was White(W).
Colored:Plume color was Light white(LW), Grayish white(GW), Gray(G) and other.

現地観測(Field Observation)	最高(起日) max (date)
	最低(起日) min (date)
火口内の湯だまりの表面温度 (Surface temperature on the water pool in the crater) (°C)	51 (23)
火口壁の表面温度 (Surface temperature on the crater wall) (°C)	150 (23)

Observation Point:the Crater No.1 of Mt. Nakadake

Asosan: February,2012



(42)雲仙岳

震動観測(Seismic Observation) Observation Point: UNZA	月計 total	最大(起日) max (date)
火山性地震回数(Number of volcanic earthquakes)	6	2 (27)
火山性微動回数(Number of volcanic tremors)	-	-
微動継続時間(Duration of volcanic tremors) (min)	-	-

Note: UNZA (N32°44.10' E130°16.05' H769m)

遠望観測(Visual Observation)	最大(起日) max (date)
噴煙量(Quantity of plumes) (JMA's scale)	1 (abbr.)
噴煙の高さ(Height of plumes) (m)	50 (29)

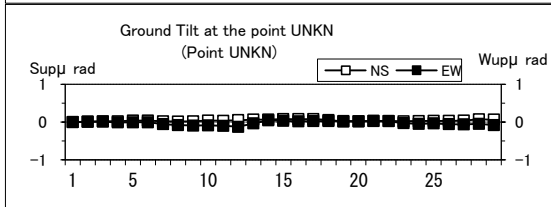
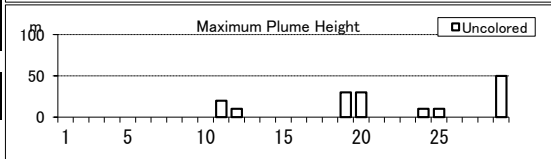
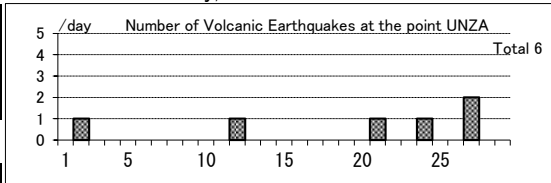
噴煙の色(Color of plumes)	W
他の火山現象(Other volcanic phenomena)	-

Note: Plumes were from the 10th Lava Dome(Location A10) and/or the 11th Lava Dome(A11).

Note: Uncolored:Plume color was White(W).

Colored:Plume color was Light white(LW), Grayish white(GW), Gray(G) and other.

Unzendake: February,2012



(43)霧島山

新燃岳 (Shinmoedake) 震動観測(Seismic Observation) Observation Point: KIRA	月計 total	最大(起日) max (date)
火山性地震回数(Number of volcanic earthquakes)	610	98 (15)
火山性微動回数(Number of volcanic tremors)	1	1 (1)
微動継続時間(Duration of volcanic tremors) (min)	33	33 (1)

Note: KIRA (N31°54.00' E130°52.27' H1,035m)

*Volcanic earthquake, tremor and duration of tremor is counted by the alternative station (Shinmoe-nishi;ERI), due to the instrumental failure at KIRA from June 16, 2011 to February 17, 2012.

遠望観測(Visual Observation)	最大(起日) max (date)
噴煙量(Quantity of plumes) (JMA's scale)	2 (11)
噴煙の高さ(Height of plumes) (m)	600 (11)

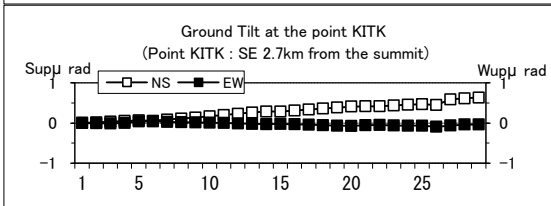
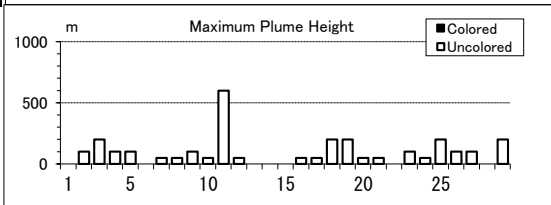
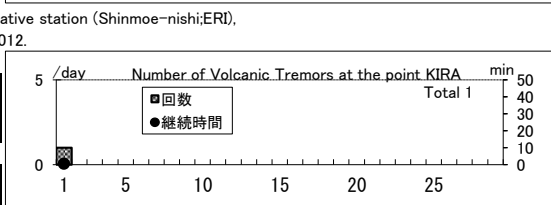
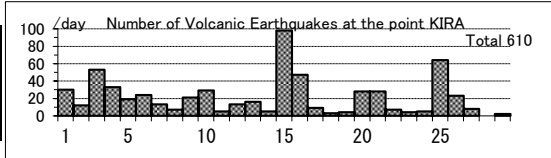
噴煙の色(Color of plumes)	W
他の火山現象(Other volcanic phenomena)	-

Note: Plumes were from the Shinmoedake Crater

Note: Uncolored:Plume color was White(W).

Colored:Plume color was Light white(LW), Grayish white(GW), Gray(G) and other.

Kirishimayama: February,2012



御鉢(Ohachi) 震動観測(Seismic Observation) Observation Point: KTCM	月計 total	最大(起日) max (date)
火山性地震回数(Number of volcanic earthquakes)	3	2 (6)
火山性微動回数(Number of volcanic tremors)	-	-
微動継続時間(Duration of volcanic tremors) (min)	-	-

Note: KTCM (N31°53.17' E130°55.18' H1,540m)

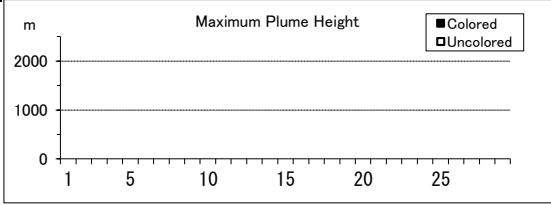
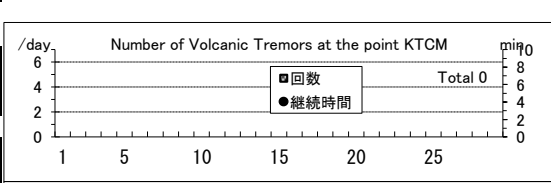
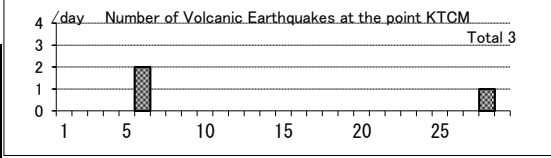
遠望観測(Visual Observation)	最大(起日) max (date)
噴煙量(Quantity of plumes) (JMA's scale)	-
噴煙の高さ(Height of plumes) (m)	-

噴煙の色(Color of plumes)	-
他の火山現象(Other volcanic phenomena)	-

Note: Plumes were from the Ohachi Crater

Note: Uncolored:Plume color was White(W).

Colored:Plume color was Light white(LW), Grayish white(GW), Gray(G) and other.



(44)桜島

震動観測(Seismic Observation)

	月計 total	最大(起日) max (date)
火山性地震回数(Number of volcanic earthquakes)	593	62 (6)
火山性微動回数(Number of volcanic tremors)	192	17 (29)
微動継続時間(Duration of volcanic tremors) (min.)	1352	503 (16)

Note: SKRB (N31°35.62' E130°38.35' H455m)

遠望観測(Visual Observation)

	月計 total	最大(起日) max (date)
爆発回数(Number of explosive eruptions)	93	9 (9,24)
降灰量(Amount of ash fall) (g/m ²)	26	20 (29)

A,B火口 (A,B crater)	最大(起日) max (date)
噴煙量(Quantity of plumes) (JMA's scale)	2 (13)
噴煙の高さ(Height of plumes) (m)	800 (13)

昭和火口 (Showa crater)	最大(起日) max (date)
噴煙量(Quantity of plumes) (JMA's scale)	4 (abbr.)
噴煙の高さ(Height of plumes) (m)	2000 (abbr.)

噴煙の色(Color of plumes)	W,LW,GW
他の火山現象(Other volcanic phenomena)	GI,As,Bm,Af

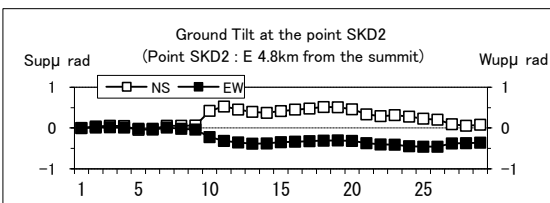
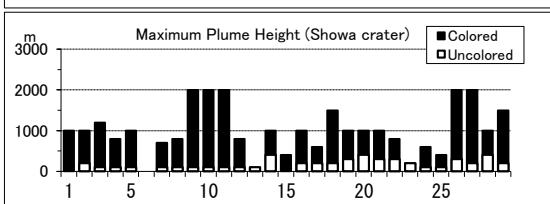
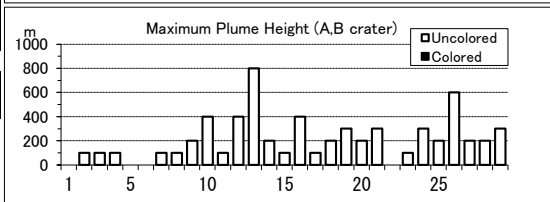
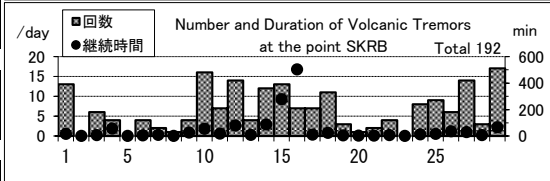
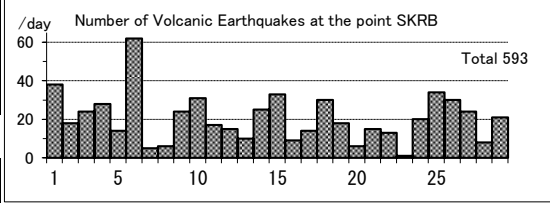
Note: Plumes were from Mt. Minamidake A Crater(A), B Crater(B) and Showa Crater(S)

Note: Uncolored:Plume color was White(W).

Colored:Plume color was Light white(LW), Grayish white(GW), Gray(G) and other.

Visual observation of explosion is described on another sheet.

Sakurajima: February,2012



(45)薩摩硫黄島

震動観測(Seismic Observation)

	月計 total	最大(起日) max (date)
火山性地震回数(Number of volcanic earthquakes)	189	11 (13,14,17)
火山性微動回数(Number of volcanic tremors)	-	-
微動継続時間(Duration of volcanic tremors) (min.)	-	-

Note: STI1 (N30°47.26' E130°18.12' H380m)

遠望観測(Visual Observation)	最大(起日) max (date)
噴煙量(Quantity of plumes) (JMA's scale)	1 (abbr.)
噴煙の高さ(Height of plumes) (m)	200 (2,10)

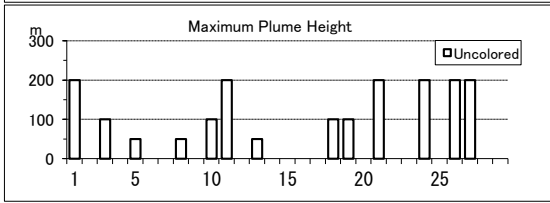
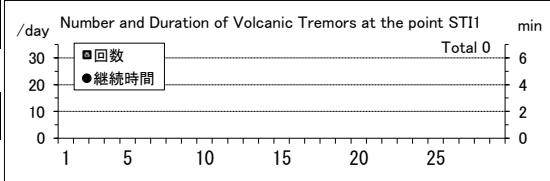
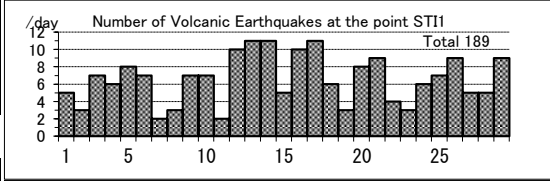
噴煙の色(Color of plumes)	W
他の火山現象(Other volcanic phenomena)	GI

Note: Uncolored:Plume color was White(W)*.

Colored:Plume color was Light white(LW), Grayish white(GW), Gray(G) and other.

*Uncolored plumes mean only White(W) color since 1st April, 2010.

Satsuma-Iojima: February,2012



(46)口永良部島

震動観測(Seismic Observation)

Observation Point: KER1	月計 total	最大(起日) max (date)
火山性地震回数(Number of volcanic earthquakes)	41	6 (10)
火山性微動回数(Number of volcanic tremors)	-	-
微動継続時間(Duration of volcanic tremors) (min.)	-	-

Note: KER1 (N30°26.94' E130°12.86' H570m)

遠望観測(Visual Observation)

	最大(起日) max (date)
噴煙量(Quantity of plumes) (JMA's scale)	1 (abbr.)
噴煙の高さ(Height of plumes) (m)	100 (abbr.)

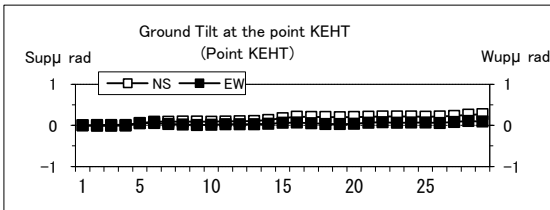
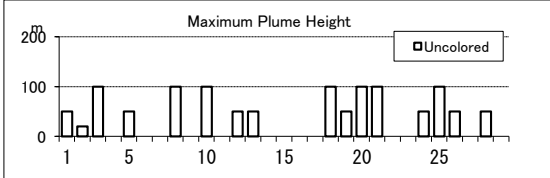
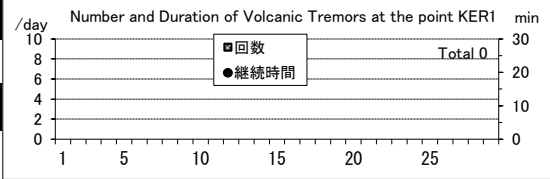
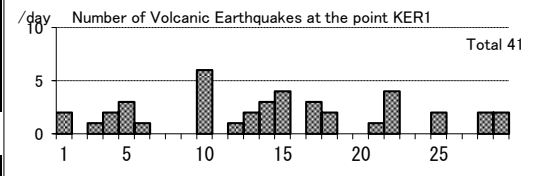
噴煙の色(Color of plumes)	W
他の火山現象(Other volcanic phenomena)	-

Note: Uncolored:Plume color was White(W)*

Colored:Plume color was Light white(LW), Grayish white(GW), Gray(G) and other.

*Uncolored plumes mean only White(W) color since 1st April, 2010.

Kuchinoerabujima: February,2012



(47)諏訪之瀬島

震動観測(Seismic Observation)

Observation Point: SWA1	月計 total	最大(起日) max (date)
火山性地震回数(Number of volcanic earthquakes)	107	13 (8)
火山性微動回数(Number of volcanic tremors)	3	2 (15)
微動継続時間(Duration of volcanic tremors) (min.)	58	30 (3)

Note: SWA1 (N29°37.73' E129°42.27' H450m)

* Continuous volcanic tremors occurred intermittently in this month.

Number of volcanic tremors and duration are not including the continuous volcanic tremor.

遠望観測(Visual Observation)

	月計 total	最大(起日) max (date)
爆発回数(Number of explosive eruptions)	1	1 (6)

	最大(起日) max (date)
噴煙量(Quantity of plumes) (JMA's scale)	1 (abbr.)
噴煙の高さ(Height of plumes) (m)	400 (20)

噴煙の色(Color of plumes)	W
他の火山現象(Other volcanic phenomena)	GI

Note: Uncolored:Plume color was White(W)*

Colored:Plume color was Light white(LW), Grayish white(GW), Gray(G) and other.

*Uncolored plumes mean only White(W) color since 1st April, 2010.

Suwanosejima: February,2012

