

# 火山観測 Summary of Observations on Volcanoes

## 常時観測 平成22年(2010年)12月

### Continuous Observation in December,2010

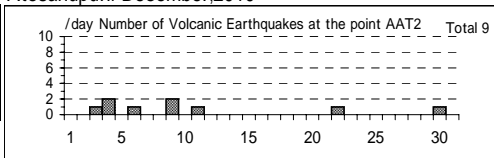
#### (1)アトサブリ

震動観測(Seismic Observation)

Observation Point: AAT2	月計 total	最大(起日) max (date)
火山性地震回数(Number of volcanic earthquakes)	9	2 (4,9)
火山性微動回数(Number of volcanic tremors)	-	-
微動継続時間(Duration of volcanic tremors) (min.)	-	-

Note: AAT2 (N43 37.1' E144 27.0' H156m)

#### Atosanupuri: December,2010



遠望観測(Visual Observation)

	最大(起日) max (date)
噴煙量(Quantity of plumes) (JMA's scale)	1 (abbr.)
噴煙の高さ(Height of plumes) (m)	200 (28)

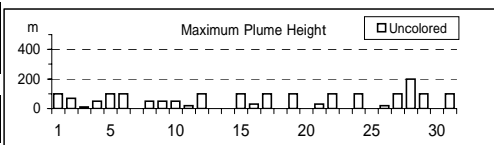
噴煙の色(Color of plumes)	W
他の火山現象(Other volcanic phenomena)	-

Note: Plumes were from Upper part of F1 Fumaroles(Location U),

Middle part of F1 Fumaroles(M) Lower part of F1 Fumaroles(L) and/or F2 Fumaroles(F)

Note: Uncolored:Plume color was White(W).

Colored:Plume color was Light white(LW), Grayish white(GW), Gray(G) and other.



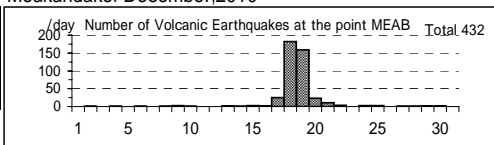
#### (2)雌阿寒岳

震動観測(Seismic Observation)

Observation Point: MEAB	月計 total	最大(起日) max (date)
火山性地震回数(Number of volcanic earthquakes)	432	182 (18)
火山性微動回数(Number of volcanic tremors)	4	4 (17)
微動継続時間(Duration of volcanic tremors) (min.)	9	9 (17)

Note: MEAB (N43 22.8' E143 58.7' H680m)

#### Meakandake: December,2010



遠望観測(Visual Observation)

	最大(起日) max (date)
噴煙量(Quantity of plumes) (JMA's scale)	1 (abbr.)
噴煙の高さ(Height of plumes) (m)	200 (27)

噴煙の色(Color of plumes)	W
他の火山現象(Other volcanic phenomena)	-

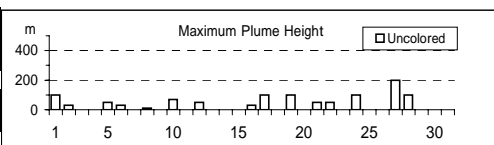
Note: Plumes were from the Ponmachineshiri Summit Crater(LocationT),

the Nakamachineshiri Crater(U), the Akanuma Crater(M) and/or

Ponmachineshiri NW Fumaroles(N).

Note: Uncolored:Plume color was White(W).

Colored:Plume color was Light white(LW), Grayish white(GW), Gray(G) and other.



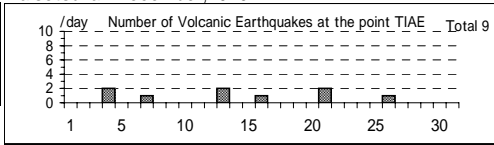
#### (3)大雪山

震動観測(Seismic Observation)

Observation Point: TIAE	月計 total	最大(起日) max (date)
火山性地震回数(Number of volcanic earthquakes)	9	2 (4,13,21)
火山性微動回数(Number of volcanic tremors)	-	-
微動継続時間(Duration of volcanic tremors) (min.)	-	-

Note: TIAE (N43 39.7' E142 49.6' H1607m)

#### Taisetsuzan:December,2010



遠望観測(Visual Observation)

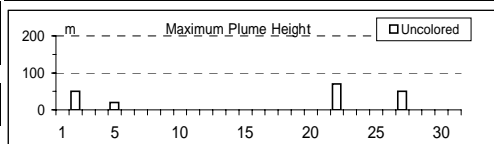
	最大(起日) max (date)
噴煙量(Quantity of plumes) (JMA's scale)	1 (abbr.)
噴煙の高さ(Height of plumes) (m)	70 (22)

噴煙の色(Color of plumes)	W
他の火山現象(Other volcanic phenomena)	-

Note: Plumes were from I Fumaroles(Location I)

Note: Uncolored:Plume color was White(W).

Colored:Plume color was Light white(LW), Grayish white(GW), Gray(G) and other.



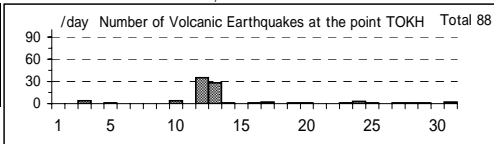
#### (4)十勝岳

震動観測(Seismic Observation)

Observation Point: TOKH	月計 total	最大(起日) max (date)
火山性地震回数(Number of volcanic earthquakes)	88	35 (12)
火山性微動回数(Number of volcanic tremors)	-	-
微動継続時間(Duration of volcanic tremors) (min.)	-	-

Note: TOKH (N43 26.0' E142 40.2' H1,355m)

#### Tokachidake: December,2010



遠望観測(Visual Observation)

	最大(起日) max (date)
噴煙量(Quantity of plumes) (JMA's scale)	1 (abbr.)
噴煙の高さ(Height of plumes) (m)	100 (27,28)

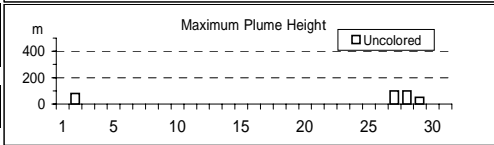
噴煙の色(Color of plumes)	W
他の火山現象(Other volcanic phenomena)	-

Note: Plumes were from the Taisho Crater(Location X),

the 62 crater Area(P,Q,Y),the Furikozawa Fumaroles (F) and/or the Kyufun Crater (Z).

Note: Uncolored:Plume color was White(W).

Colored:Plume color was Light white(LW), Grayish white(GW), Gray(G) and other.



(5)樽前山

震動観測(Seismic Observation)

	月計 total	最大(起日) max (date)
火山性地震回数(Number of volcanic earthquakes)	41	5 (5)
火山性微動回数(Number of volcanic tremors)	-	-
微動継続時間(Duration of volcanic tremors) (min.)	-	-

Note: TARC (N42 42.2' E141 22.6' H638m)

遠望観測(Visual Observation)

	最大(起日) max (date)
噴煙量(Quantity of plumes) (JMA's scale)	1 (abbr.)
噴煙の高さ(Height of plumes) (m)	100 (17)

噴煙の色(Color of plumes)	W
他の火山現象(Other volcanic phenomena)	-

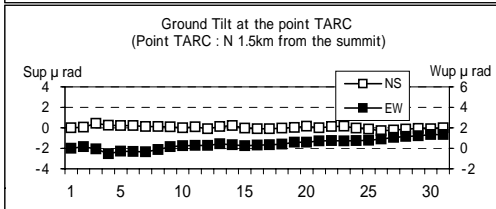
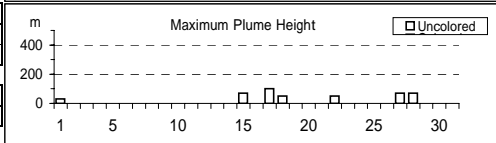
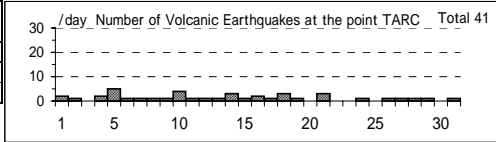
Note: Plumes were from the Summit Area(Location A, B and/or E).

Note: Uncolored:Plume color was White(W).

Colored:Plume color was Light white(LW),

Grayish white(GW), Gray(G) and other.

Tarumaesan: December,2010



(6)倶多楽

震動観測(Seismic Observation)

	月計 total	最大(起日) max (date)
火山性地震回数(Number of volcanic earthquakes)	-	-
火山性微動回数(Number of volcanic tremors)	-	-
微動継続時間(Duration of volcanic tremors) (min.)	-	-

Note:KUJG (N42 29.5' E141 7.7' H327m)

遠望観測(Visual Observation)

	最大(起日) max (date)
噴煙量(Quantity of plumes) (JMA's scale)	1 (abbr.)
噴煙の高さ(Height of plumes) (m)	50 (2,7,19)

噴煙の色(Color of plumes)	W
他の火山現象(Other volcanic phenomena)	-

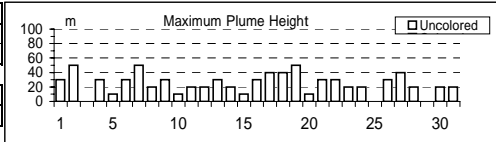
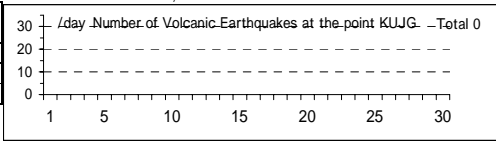
Note: Plumes were from Hiyoriyama Fumarole(Location H)

Note: Uncolored:Plume color was White(W).

Colored:Plume color was Light white(LW),

Grayish white(GW), Gray(G) and other.

Kuttara: December,2010



(7)有珠山

震動観測(Seismic Observation)

	月計 total	最大(起日) max (date)
火山性地震回数(Number of volcanic earthquakes)	20	2 (abbr.)
火山性微動回数(Number of volcanic tremors)	-	-
微動継続時間(Duration of volcanic tremors) (min.)	-	-

Note: USUA (N42 31.7' E140 50.2' H246m)

遠望観測(Visual Observation)

	最大(起日) max (date)
噴煙量(Quantity of plumes) (JMA's scale)	1 (abbr.)
噴煙の高さ(Height of plumes) (m)	100 (10,30)

噴煙の色(Color of plumes)	W
他の火山現象(Other volcanic phenomena)	-

Note: Plumes were from the Summit Area of Usuzan(Location P),

Mt.showa-shinazan(Z), Nishi-yama vent group(N)

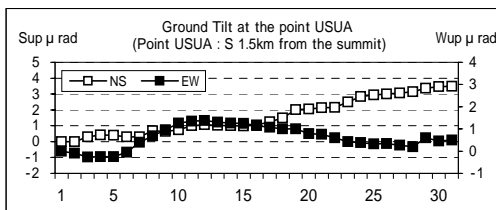
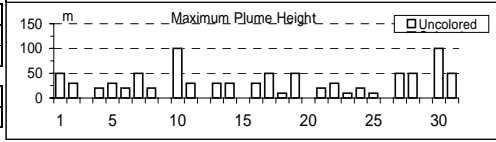
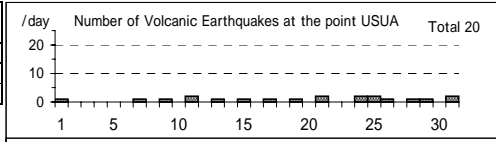
and Konpira-yama vent group(K).

Note: Uncolored:Plume color was White(W).

Colored:Plume color was Light white(LW),

Grayish white(GW), Gray(G) and other.

Usuzan: December,2010



(8)北海道駒ヶ岳

震動観測(Seismic Observation)

	月計 total	最大(起日) max (date)
火山性地震回数(Number of volcanic earthquakes)	1	1 (21)
火山性微動回数(Number of volcanic tremors)	-	-
微動継続時間(Duration of volcanic tremors) (min.)	-	-

Note: KOMA (N42°03.2' E140°38.3' H265m)

遠望観測(Visual Observation)

	最大(起日) max (date)
噴煙量(Quantity of plumes) (JMA's scale)	1 (30)
噴煙の高さ(Height of plumes) (m)	20 (30)

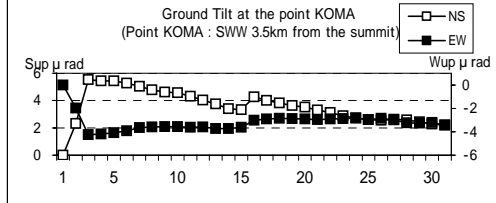
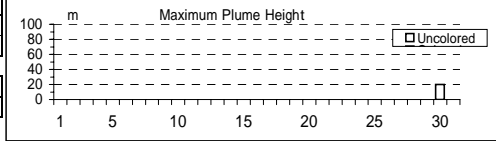
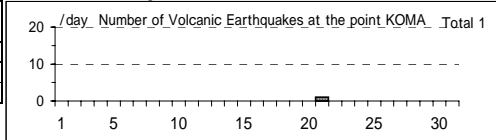
噴煙の色(Color of plumes)	W
他の火山現象(Other volcanic phenomena)	-

Note: Plumes were from the Showa-4 Crater(Location D1) and/or the 96 South Crater(D2).

Note: Uncolored:Plume color was White(W).

Colored:Plume color was Light white(LW), Grayish white(GW), Gray(G) and other.

Hokkaido-Komagatake: December,2010



(9)恵山

震動観測(Seismic Observation)

	月計 total	最大(起日) max (date)
火山性地震回数(Number of volcanic earthquakes)	2	1 (6,25)
火山性微動回数(Number of volcanic tremors)	-	-
微動継続時間(Duration of volcanic tremors) (min.)	-	-

Note: ESDK (N41°48.7' E141°9.7' H369m)

遠望観測(Visual Observation)

	最大(起日) max (date)
噴煙量(Quantity of plumes) (JMA's scale)	1 (abbr.)
噴煙の高さ(Height of plumes) (m)	100 (28)

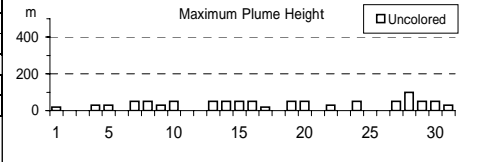
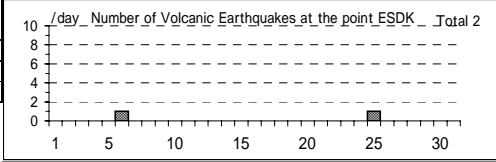
噴煙の色(Color of plumes)	W
他の火山現象(Other volcanic phenomena)	-

Note: Plumes were from X Crater(Location X), Y Crater(Y)

Note: Uncolored:Plume color was White(W).

Colored:Plume color was Light white(LW), Grayish white(GW), Gray(G) and other.

Esan: December,2010



(10)岩木山

遠望観測(Visual Observation)

	最大(起日) max (date)
噴煙量(Quantity of plumes) (JMA's scale)	-
噴煙の高さ(Height of plumes) (m)	-

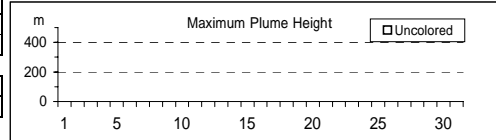
噴煙の色(Color of plumes)	-
他の火山現象(Other volcanic phenomena)	-

Note: Plumes were from Iwaki Summit

Note: Uncolored:Plume color was White(W).

Colored:Plume color was Light white(LW), Grayish white(GW), Gray(G) and other.

Iwakisan: December,2010



(11)秋田焼山

震動観測(Seismic Observation)

	月計 total	最大(起日) max (date)
火山性地震回数(Number of volcanic earthquakes)	8	4 (31)
火山性微動回数(Number of volcanic tremors)	-	-
微動継続時間(Duration of volcanic tremors) (min.)	-	-

Note: AYBN (N39°56.7' E140°43.2' H738m)

遠望観測(Visual Observation)

	最大(起日) max (date)
噴煙量(Quantity of plumes) (JMA's scale)	1 (9,17,19)
噴煙の高さ(Height of plumes) (m)	100 (9)

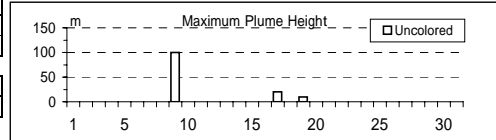
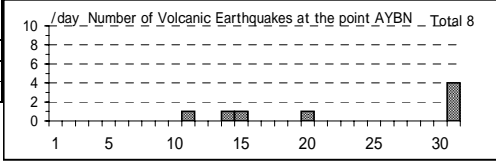
噴煙の色(Color of plumes)	W
他の火山現象(Other volcanic phenomena)	-

Note: Plumes were from Yakeyama Summit

Note: Uncolored:Plume color was White(W).

Colored:Plume color was Light white(LW), Grayish white(GW), Gray(G) and other.

Akita-Yakeyama : December,2010



(12)岩手山

震動観測(Seismic Observation)

	月計 total	最大(起日) max (date)
Observation Point: IWYK		
火山性地震回数(Number of volcanic earthquakes)	44	10 (13)
火山性微動回数(Number of volcanic tremors)	-	-
微動継続時間(Duration of volcanic tremors) (min.)	-	-

Note: IWYK (N39 52.7° E140 57.6° H763m)

遠望観測(Visual Observation)

	最大(起日) max (date)
噴煙量(Quantity of plumes) (JMA's scale)	1 (17,19)
噴煙の高さ(Height of plumes) (m)	30 (17)

噴煙の色(Color of plumes)	W
他の火山現象(Other volcanic phenomena)	-

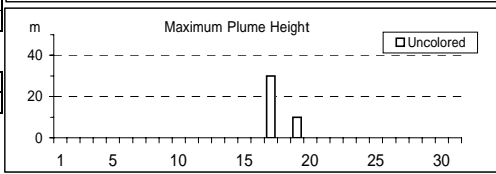
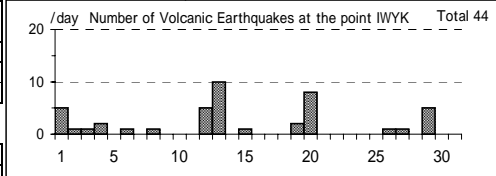
Note: Plumes were from the Kurokurayama Summit(Location X), the Ojigokudani(Y-6)

Note: Uncolored:Plume color was White(W).\*

Colored:Plume color was Light white(LW), Grayish white(GW), Gray(G) and other.

\*Uncolored plumes mean only White(W) color since 1st April, 2010.

Iwatesan: December,2010



(13)秋田駒ヶ岳

遠望観測(Visual Observation)

	最大(起日) max (date)
噴煙量(Quantity of plumes) (JMA's scale)	-
噴煙の高さ(Height of plumes) (m)	-

噴煙の色(Color of plumes)	-
他の火山現象(Other volcanic phenomena)	-

Note: Plumes were from Medake Summit(Location Z-1a), Geothermal area on the N part of Medake Summit(Z-1b), W part of Medake Summit(Z-1c).

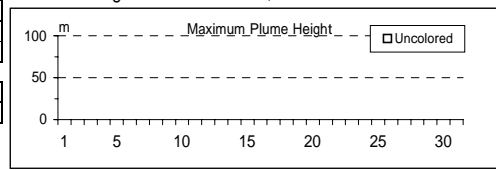
Geothermal area on the NE slope of Medake Summit(Z-1d) and/or

Crater on the E part of Medake Summit(Z-1e)

Note: Uncolored:Plume color was White(W).

Colored:Plume color was Light white(LW), Grayish white(GW), Gray(G) and other.

Akita-Komagatake: December,2010



(14)鳥海山

震動観測(Seismic Observation)

	月計 total	最大(起日) max (date)
Observation Point: KNM		
火山性地震回数(Number of volcanic earthquakes)	-	-
火山性微動回数(Number of volcanic tremors)	-	-
微動継続時間(Duration of volcanic tremors) (min.)	-	-

Note: KNM (N39 07.8° E139 56.4° H335m)

遠望観測(Visual Observation)

	最大(起日) max (date)
噴煙量(Quantity of plumes) (JMA's scale)	-
噴煙の高さ(Height of plumes) (m)	-

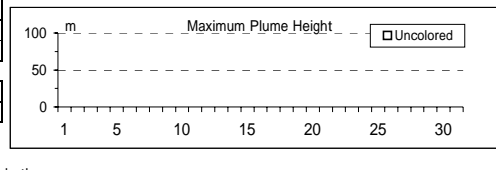
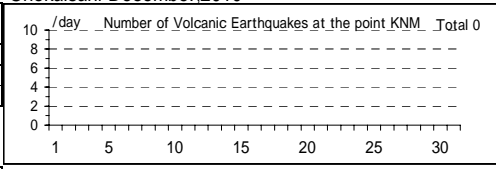
噴煙の色(Color of plumes)	-
他の火山現象(Other volcanic phenomena)	-

Note: Plumes were from Sin Summit(Location Y)

Note: Uncolored:Plume color was White(W).

Colored:Plume color was Light white(LW), Grayish white(GW), Gray(G) and other.

Chokaisan: December,2010



(15)栗駒山

震動観測(Seismic Observation)

	月計 total	最大(起日) max (date)
Observation Point: KRK2		
火山性地震回数(Number of volcanic earthquakes)	-	-
火山性微動回数(Number of volcanic tremors)	-	-
微動継続時間(Duration of volcanic tremors) (min.)	-	-

Note: KRK2 (N38 56.5° E140 49.1° H840m)

遠望観測(Visual Observation)

	最大(起日) max (date)
噴煙量(Quantity of plumes) (JMA's scale)	-
噴煙の高さ(Height of plumes) (m)	-

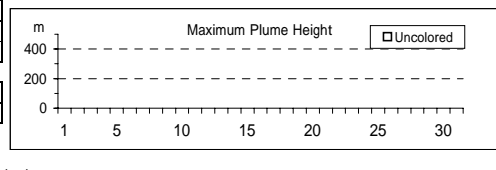
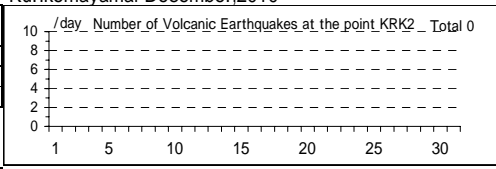
噴煙の色(Color of plumes)	-
他の火山現象(Other volcanic phenomena)	-

Note: Plumes were from Showa Lake(Location Z-1),Old Crater (W-1)

Note: Uncolored:Plume color was White(W).

Colored:Plume color was Light white(LW), Grayish white(GW), Gray(G) and other.

Kurikomayama: December,2010



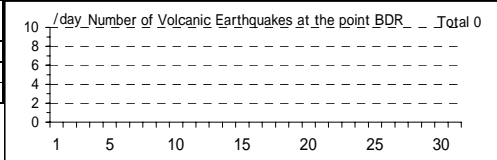
(16) 蔵王山

震動観測(Seismic Observation)

	月計 total	最大(起日) max (date)
Observation Point: BDR		
火山性地震回数(Number of volcanic earthquakes)	-	-
火山性微動回数(Number of volcanic tremors)	-	-
微動継続時間(Duration of volcanic tremors) (min.)	-	-

Note: BDR (N38°07.3' E140°23.7' H1,012m)

Zaozan: December,2010



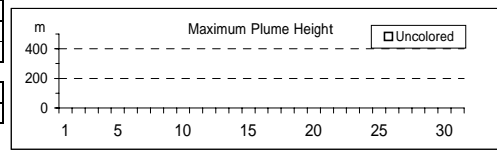
遠望観測(Visual Observation)

	最大(起日) max (date)
噴煙量(Quantity of plumes) (JMA's scale)	-
噴煙の高さ(Height of plumes) (m)	-
噴煙の色(Color of plumes)	-
他の火山現象(Other volcanic phenomena)	-

Note: Plumes were from Okama(Location S-1b),Maruyamasawa(Y-2a)

Note: Uncolored:Plume color was White(W).

Colored:Plume color was Light white(LW), Grayish white(GW), Gray(G) and other.



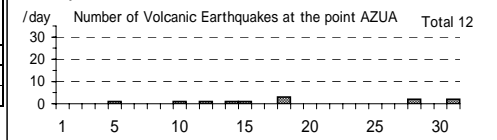
(17) 吾妻山

震動観測(Seismic Observation)

	月計 total	最大(起日) max (date)
Observation Point: AZUA		
火山性地震回数(Number of volcanic earthquakes)	12	3 (18)
火山性微動回数(Number of volcanic tremors)	-	-
微動継続時間(Duration of volcanic tremors) (min.)	-	-

Note: AZUA (N37°43.3' E140°16.5' H1,295m)

Azumayama: December,2010



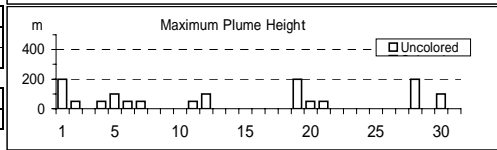
遠望観測(Visual Observation)

	最大(起日) max (date)
噴煙量(Quantity of plumes) (JMA's scale)	1 (abbr.)
噴煙の高さ(Height of plumes) (m)	200 (1,19,28)
噴煙の色(Color of plumes)	W
他の火山現象(Other volcanic phenomena)	-

Note: Plumes were from the Oana Crater

Note: Uncolored:Plume color was White(W).

Colored:Plume color was Light white(LW), Grayish white(GW), Gray(G) and other.



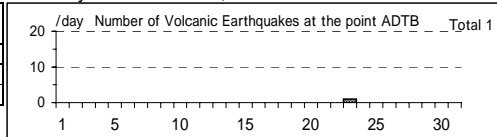
(18) 安達太良山

震動観測(Seismic Observation)

	月計 total	最大(起日) max (date)
Observation Point: ADTB		
火山性地震回数(Number of volcanic earthquakes)	1	1 (23)
火山性微動回数(Number of volcanic tremors)	-	-
微動継続時間(Duration of volcanic tremors) (min.)	-	-

Note: ADTB(N37°38.1' E140°18.2' H1,320m)

Adatarayama: December,2010



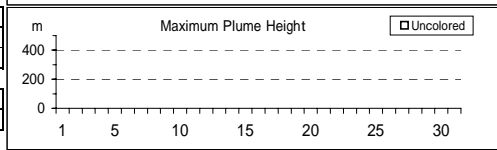
遠望観測(Visual Observation)

	最大(起日) max (date)
噴煙量(Quantity of plumes) (JMA's scale)	-
噴煙の高さ(Height of plumes) (m)	-
噴煙の色(Color of plumes)	-
他の火山現象(Other volcanic phenomena)	-

Note: Plumes were from the Numanodaira - SW area.

Note: Uncolored:Plume color was White(W).

Colored:Plume color was Light white(LW), Grayish white(GW), Gray(G) and other.



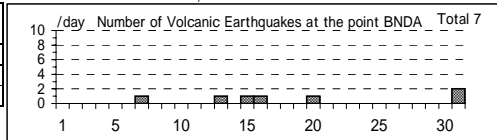
(19) 磐梯山

震動観測(Seismic Observation)

	月計 total	最大(起日) max (date)
Observation Point: BNDA		
火山性地震回数(Number of volcanic earthquakes)	7	2 (31)
火山性微動回数(Number of volcanic tremors)	-	-
微動継続時間(Duration of volcanic tremors) (min.)	-	-

Note: BNDA(N37°35.0' E140°04.8' H1000m)

Bandaisan: December,2010



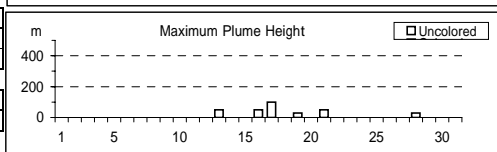
遠望観測(Visual Observation)

	最大(起日) max (date)
噴煙量(Quantity of plumes) (JMA's scale)	1 (abbr.)
噴煙の高さ(Height of plumes) (m)	100 (17)
噴煙の色(Color of plumes)	W
他の火山現象(Other volcanic phenomena)	-

Note: Plumes were from the Fumarolic area in Crater wall.

Note: Uncolored:Plume color was White(W).

Colored:Plume color was Light white(LW), Grayish white(GW), Gray(G) and other.



(20)那須岳

震動観測(Seismic Observation)

Observation Point: NSUA	月計 total	最大(起日) max (date)
火山性地震回数(Number of volcanic earthquakes)	3	1 (14.20.26)
火山性微動回数(Number of volcanic tremors)	-	-
微動継続時間(Duration of volcanic tremors) (min.)	-	-

Note: NSUA (N37 06.2' E139 59.6' H1,083m)

遠望観測(Visual Observation)

	最大(起日) max (date)
噴煙量(Quantity of plumes) (JMA's scale)	1 (abbr.)
噴煙の高さ(Height of plumes) (m)	200 (abbr.)

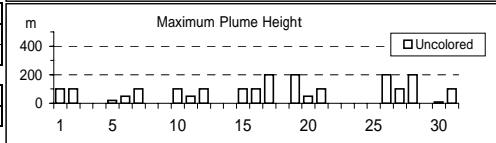
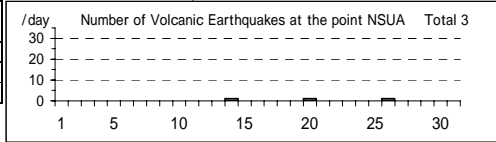
噴煙の色(Color of plumes)	W
他の火山現象(Other volcanic phenomena)	-

Note: Plumes were from the west flank of Mt. Nasudake.

Note: Uncolored:Plume color was White(W).

Colored:Plume color was Light white(LW), Grayish white(GW), Gray(G) and other.

Nasudake: December,2010



(21)日光白根山

震動観測(Seismic Observation)

Observation Point: NSYG	月計 total	最大(起日) max (date)
火山性地震回数(Number of volcanic earthquakes)	8	2 (16.28)
火山性微動回数(Number of volcanic tremors)	-	-
微動継続時間(Duration of volcanic tremors) (min.)	-	-

Note: NSYG (N36 48.2' E139 24.5' H1,642m)

遠望観測(Visual Observation)

	最大(起日) max (date)
噴煙量(Quantity of plumes) (JMA's scale)	-
噴煙の高さ(Height of plumes) (m)	-

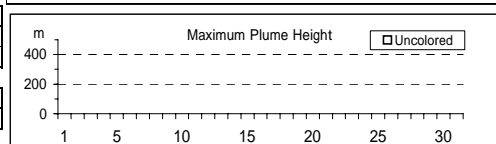
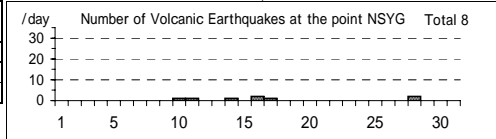
噴煙の色(Color of plumes)	-
他の火山現象(Other volcanic phenomena)	-

Note: Plumes were from Summit Area of Nikko-Shiranesan(Location A)

Note: Uncolored:Plume color was White(W).

Colored:Plume color was Light white(LW), Grayish white(GW), Gray(G) and other.

Nikko-Shiranesan: December,2010



(22)草津白根山

震動観測(Seismic Observation)

Observation Point: KSHA	月計 total	最大(起日) max (date)
火山性地震回数(Number of volcanic earthquakes)	21	2 (abbr.)
火山性微動回数(Number of volcanic tremors)	-	-
微動継続時間(Duration of volcanic tremors) (min.)	-	-

Note: KSHA (N36 38.9' E138 32.7' H1,933m)

遠望観測(Visual Observation)

	最大(起日) max (date)
噴煙量(Quantity of plumes) (JMA's scale)	1 (abbr.)
噴煙の高さ(Height of plumes) (m)	50 (10,19,21)

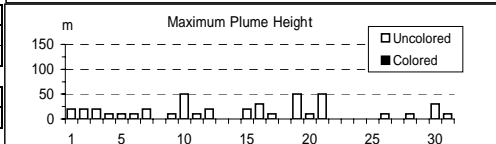
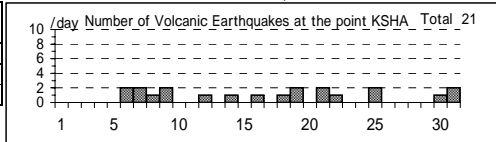
噴煙の色(Color of plumes)	W -
他の火山現象(Other volcanic phenomena)	- -

Note: Plumes were from the Yugama Crater and Fumaroles at northern side of Yugama Crater

Note: Uncolored:Plume color was White(W).

Colored:Plume color was Light white(LW), Grayish white(GW), Gray(G) and other.

Kusatsu-Shiranesan: December,2010



(23)浅間山

震動観測(Seismic Observation)

Observation Point: ASMB	月計 total	最大(起日) max (date)
火山性地震回数(Number of volcanic earthquakes)	580	45 (30)
火山性微動回数(Number of volcanic tremors)	-	-
微動継続時間(Duration of volcanic tremors) (min.)	-	-

Note: ASMB (N36 23.4' E138 31.1' H1,864m)

遠望観測(Visual Observation)

	最大(起日) max (date)
噴煙量(Quantity of plumes) (JMA's scale)	2 (abbr.)
噴煙の高さ(Height of plumes) (m)	300 (26,27)

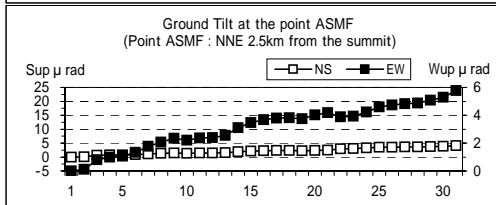
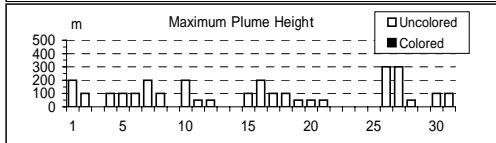
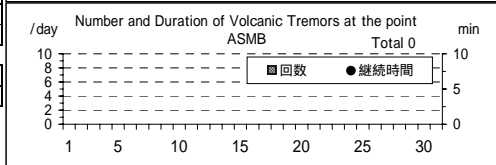
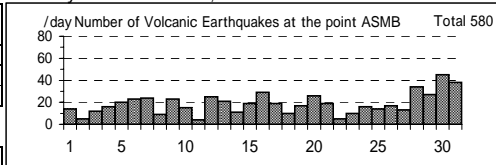
噴煙の色(Color of plumes)	W
他の火山現象(Other volcanic phenomena)	-

Note: Plumes were from the Kamayama Crater(Location A).

Note: Uncolored:Plume color was White(W).

Colored:Plume color was Light white(LW), Grayish white(GW), Gray(G) and other.

Asamayama: December,2010



(24)新潟焼山

震動観測(Seismic Observation)	月計 total	最大(起日) max (date)
Observation Point: NYOD		
火山性地震回数(Number of volcanic earthquakes)	-	-
火山性微動回数(Number of volcanic tremors)	-	-
微動継続時間(Duration of volcanic tremors) (min.)	-	-

Note: NYOD (N36°57.4' E138°2.3' H1,150m)

遠望観測(Visual Observation)	最大(起日) max (date)
噴煙量(Quantity of plumes) (JMA's scale)	1 (abbr.)
噴煙の高さ(Height of plumes) (m)	100 (16)

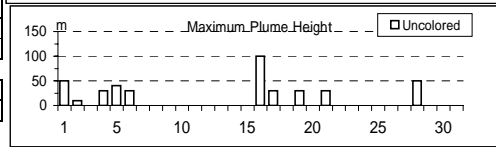
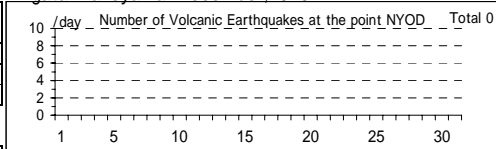
噴煙の色(Color of plumes)	W
他の火山現象(Other volcanic phenomena)	-

Note: Plumes were from Upper East flank(Location A).

Note: Uncolored:Plume color was White(W).

Colored:Plume color was Light white(LW), Grayish white(GW), Gray(G) and other.

Niigata-Yakeyama: December.2010

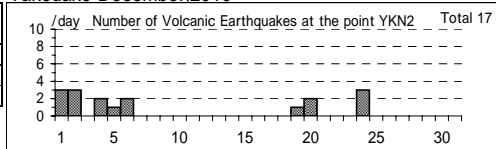


(25)焼岳

震動観測(Seismic Observation)	月計 total	最大(起日) max (date)
Observation Point: YKN2		
火山性地震回数(Number of volcanic earthquakes)	17	3 (1,2,24)
火山性微動回数(Number of volcanic tremors)	-	-
微動継続時間(Duration of volcanic tremors) (min.)	-	-

Note: YKN2 (N36°15.7' E137°34.5' H1,151m)

Yakedake December.2010

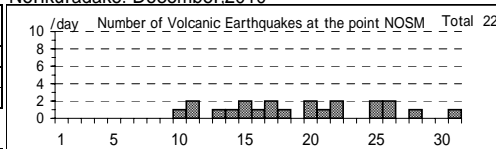


(26)乗鞍岳

震動観測(Seismic Observation)	月計 total	最大(起日) max (date)
Observation Point: NOSM		
火山性地震回数(Number of volcanic earthquakes)	22	2 (abbr.)
火山性微動回数(Number of volcanic tremors)	-	-
微動継続時間(Duration of volcanic tremors) (min.)	-	-

Note: NOSM (N36°06.9' E137°35.8' H1,804m)

Norikuradake: December.2010



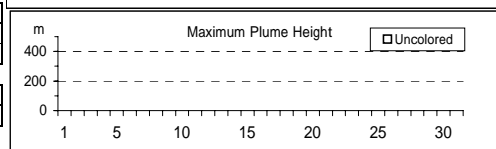
遠望観測(Visual Observation)	最大(起日) max (date)
噴煙量(Quantity of plumes) (JMA's scale)	-
噴煙の高さ(Height of plumes) (m)	-

噴煙の色(Color of plumes)	-
他の火山現象(Other volcanic phenomena)	-

Note: Plumes were from Summit Crater(Location A).

Note: Uncolored:Plume color was White(W).

Colored:Plume color was Light white(LW), Grayish white(GW), Gray(G) and other.

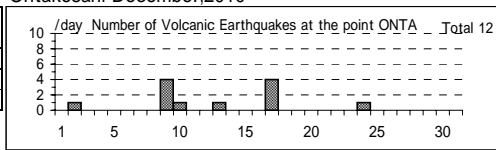


(27)御嶽山

震動観測(Seismic Observation)	月計 total	最大(起日) max (date)
Observation Point: ONTA		
火山性地震回数(Number of volcanic earthquakes)	12	4 (9,17)
火山性微動回数(Number of volcanic tremors)	-	-
微動継続時間(Duration of volcanic tremors) (min.)	-	-

Note: ONTA (N35°52.6' E137°29.7' H2,228m)

Ontakesan: December,2010



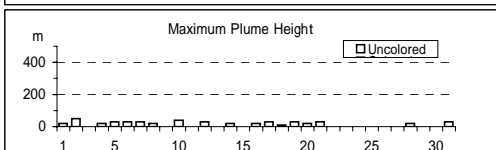
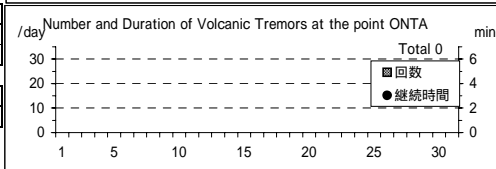
遠望観測(Visual Observation)	最大(起日) max (date)
噴煙量(Quantity of plumes) (JMA's scale)	1 (abbr.)
噴煙の高さ(Height of plumes) (m)	50 (2)

噴煙の色(Color of plumes)	W
他の火山現象(Other volcanic phenomena)	-

Note: Plumes were from the Otaki summit Crater (A) and/or S6

Note: Uncolored:Plume color was White(W).

Colored:Plume color was Light white(LW), Grayish white(GW), Gray(G) and other.

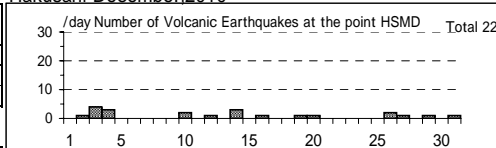


(28)白山

震動観測(Seismic Observation)	月計 total	最大(起日) max (date)
Observation Point: HSMD		
火山性地震回数(Number of volcanic earthquakes)	22	4 (3)
火山性微動回数(Number of volcanic tremors)	-	-
微動継続時間(Duration of volcanic tremors) (min.)	-	-

Note: HSMD (N36°8.8' E136°45.9' H2,345m)

Hakusan: December.2010



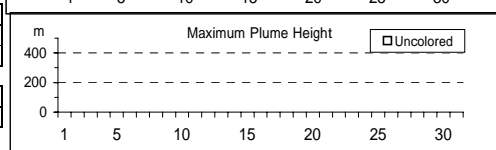
遠望観測(Visual Observation)	最大(起日) max (date)
噴煙量(Quantity of plumes) (JMA's scale)	-
噴煙の高さ(Height of plumes) (m)	-

噴煙の色(Color of plumes)	-
他の火山現象(Other volcanic phenomena)	-

Note: Plumes were from Summit Area of Hakusan(Location A)

Note: Uncolored:Plume color was White(W).

Colored:Plume color was Light white(LW), Grayish white(GW), Gray(G) and other.



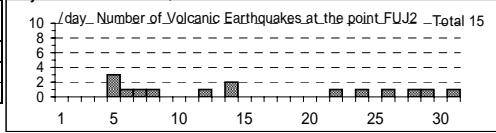
(29)富士山

震動観測(Seismic Observation)

Table with 3 columns: Observation Point, 月計 total, 最大(起日) max (date). Rows include volcanic earthquakes (15 total, max 3 on 5th), tremors, and duration.

Note: FUJ2 (N35 21.6' E138 43.6' H3,772m)

Fujisan: December.2010



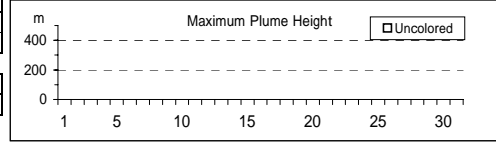
遠望観測(Visual Observation)

Table with 2 columns: Observation Item, 最大(起日) max (date). Rows include plume quantity, height, color, and other phenomena.

Note: Plumes were from Summit Crater(Location A),Hoei Crater(B)

Note: Uncolored:Plume color was White(W).

Colored:Plume color was Light white(LW), Grayish white(GW), Gray(G) and other.



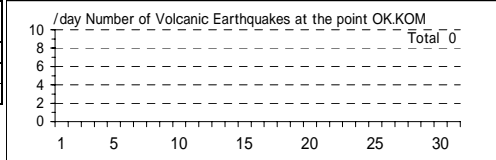
(30)箱根山

震動観測(Seismic Observation)

Table with 3 columns: Observation Point, 月計 total, 最大(起日) max (date). Rows include volcanic earthquakes, tremors, and duration.

Note: OK.KOM(N35 13.2' E139 02.0' H1,049m)

Hakoneyama: December.2010



遠望観測(Visual Observation)

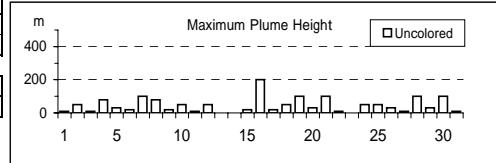
Table with 2 columns: Observation Item, 最大(起日) max (date). Rows include plume quantity (1), height (200m), color (W), and other phenomena.

Note: Plumes were from Fumaroles near Owakudani(Location A),

Fumaroles near Sounjigoku(B)

Note: Uncolored:Plume color was White(W).

Colored:Plume color was Light white(LW), Grayish white(GW), Gray(G) and other.



(31)伊豆東部火山群

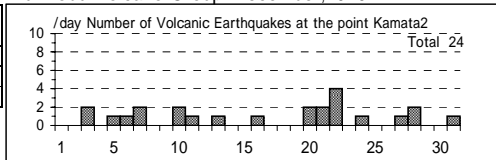
震動観測(Seismic Observation)

Table with 3 columns: Observation Point, 月計 total, 最大(起日) max (date). Rows include volcanic earthquakes (24 total, max 4 on 22nd), tremors, and duration.

Note: ITBA (N35 00.5' E139 05.9' H12m)

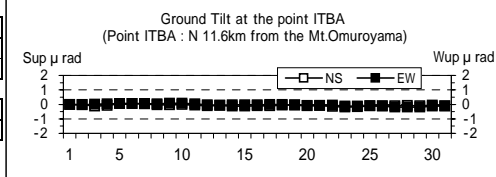
Kamata2(N34 55.71' E139 03.65' H175m)

Izu-Tobu Volcano Group: December.2010



遠望観測(Visual Observation)

Table with 2 columns: Observation Item, 最大(起日) max (date). Rows include plume quantity, height, color, and other phenomena.



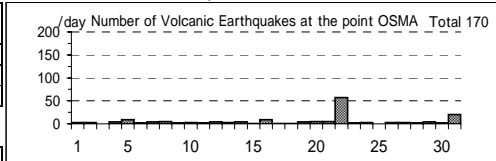
(32)伊豆大島

震動観測(Seismic Observation)

Table with 3 columns: Observation Point, 月計 total, 最大(起日) max (date). Rows include volcanic earthquakes (170 total, max 57 on 22nd), tremors, and duration.

Note: OSMa (N34 44.2' E139 23.2' H553m)

Izu-Oshima: December.2010



遠望観測(Visual Observation)

Table with 2 columns: Observation Item, 最大(起日) max (date). Rows include plume quantity (1), height (100m), color (W), and other phenomena.

Note:Plumes were from the Miharayama Summit Crater(Location A),

the Fumaroles at western side of Miharashinzan(A1),

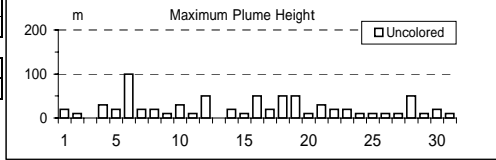
the Fumaroles near Kengamine(A2),

the Fumaroles at eastern side of Miharashinzan(A3)

Note: Uncolored:Plume color was White(W).

Colored:Plume color was Light white(LW), Grayish white(GW),

Gray(G) and other.



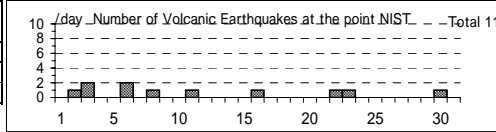
(33)新島

震動観測(Seismic Observation)

Table with 3 columns: Observation Point, 月計 total, 最大(起日) max (date). Rows include volcanic earthquakes (11 total, max 2 on 3rd), tremors, and duration.

Note: NIST (N34 21.8' E139 14.9' H41m)

Niiijima: December.2010



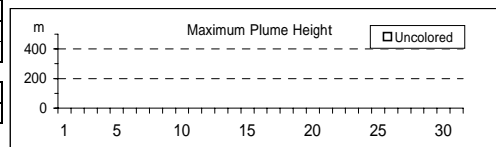
遠望観測(Visual Observation)

Table with 2 columns: Observation Item, 最大(起日) max (date). Rows include plume quantity, height, color, and other phenomena.

Note: Plumes were from Summit Area of Tangoyama(Location A)

Note: Uncolored:Plume color was White(W).

Colored:Plume color was Light white(LW), Grayish white(GW), Gray(G) and other.





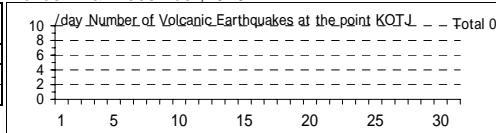
(34) 神津島

震動観測 (Seismic Observation)

	月計 total	最大(起日) max (date)
Observation Point: KOTJ		
火山性地震回数 (Number of volcanic earthquakes)	-	-
火山性微動回数 (Number of volcanic tremors)	-	-
微動継続時間 (Duration of volcanic tremors) (min.)	-	-

Note: KOTJ (N34 13.2' E139 08.9' H372m)

Kozushima: December.2010



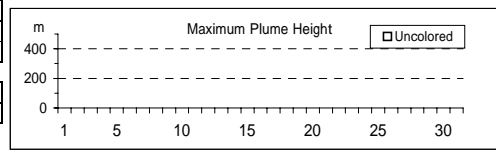
遠望観測 (Visual Observation)

	最大(起日) max (date)
噴煙量 (Quantity of plumes) (JMA's scale)	-
噴煙の高さ (Height of plumes) (m)	-
噴煙の色 (Color of plumes)	-
他の火山現象 (Other volcanic phenomena)	-

Note: Plumes were from Summit Area of Tenjosan (Location A)

Note: Uncolored: Plume color was White (W).

Colored: Plume color was Light white (LW), Grayish white (GW), Gray (G) and other.



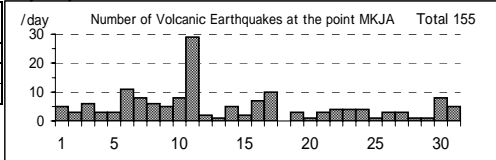
(35) 三宅島

震動観測 (Seismic Observation)

	月計 total	最大(起日) max (date)
Observation Point: MKJA		
火山性地震回数 (Number of volcanic earthquakes)	155	29 (11)
火山性微動回数 (Number of volcanic tremors)	-	-
微動継続時間 (Duration of volcanic tremors) (min.)	-	-

Note: MKJA (N34 05.9' E139 32.0' H527m)

Miyakejima: December.2010



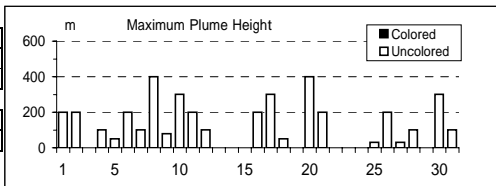
遠望観測 (Visual Observation)

	最大(起日) max (date)
噴煙量 (Quantity of plumes) (JMA's scale)	2 (abbr.)
噴煙の高さ (Height of plumes) (m)	400 (8,20)
噴煙の色 (Color of plumes)	W
他の火山現象 (Other volcanic phenomena)	-

Note: Plumes were from the Summit Crater.

Note: Uncolored: Plume color was White (W).

Colored: Plume color was Light white (LW), Grayish white (GW), Gray (G) and other.



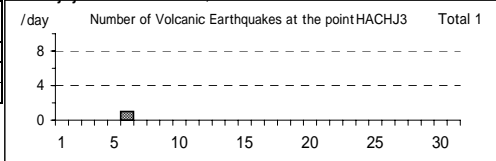
(36) 八丈島

震動観測 (Seismic Observation)

	月計 total	最大(起日) max (date)
Observation Point: HACHJ3		
火山性地震回数 (Number of volcanic earthquakes)	1	1 (6)
火山性微動回数 (Number of volcanic tremors)	-	-
微動継続時間 (Duration of volcanic tremors) (min.)	-	-

Note: HACHJ3 (N33 06.3' E139 47.1' H ? m)

Hachijojima: December.2010



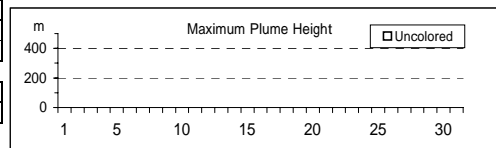
遠望観測 (Visual Observation)

	最大(起日) max (date)
噴煙量 (Quantity of plumes) (JMA's scale)	-
噴煙の高さ (Height of plumes) (m)	-
噴煙の色 (Color of plumes)	-
他の火山現象 (Other volcanic phenomena)	-

Note: Plumes were from Nishiyama Crater (Location A)

Note: Uncolored: Plume color was White (W).

Colored: Plume color was Light white (LW), Grayish white (GW), Gray (G) and other.



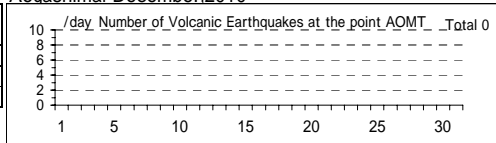
(37) 青ヶ島

震動観測 (Seismic Observation)

	月計 total	最大(起日) max (date)
Observation Point: AOMT		
火山性地震回数 (Number of volcanic earthquakes)	-	-
火山性微動回数 (Number of volcanic tremors)	-	-
微動継続時間 (Duration of volcanic tremors) (min.)	-	-

Note: AOMT (N32 28.0' E139 45.6' H273m)

Aogashima: December.2010



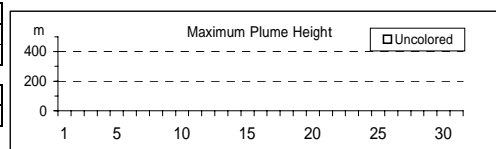
遠望観測 (Visual Observation)

	最大(起日) max (date)
噴煙量 (Quantity of plumes) (JMA's scale)	-
噴煙の高さ (Height of plumes) (m)	-
噴煙の色 (Color of plumes)	-
他の火山現象 (Other volcanic phenomena)	-

Note: Plumes were from Western flank of Maruyama (Location A)

Note: Uncolored: Plume color was White (W).

Colored: Plume color was Light white (LW), Grayish white (GW), Gray (G) and other.



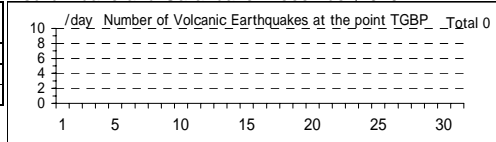
(38) 鶴見岳・伽藍岳

震動観測(Seismic Observation)

	月計 total	最大(起日) max (date)
Observation Point: TGBP		
火山性地震回数(Number of volcanic earthquakes)	-	-
火山性微動回数(Number of volcanic tremors)	-	-
微動継続時間(Duration of volcanic tremors) (min.)	-	-

Note: TGBP (N33 19.53' E131 27.07' H460m)

Tsurumidake and Garandake: December,2010



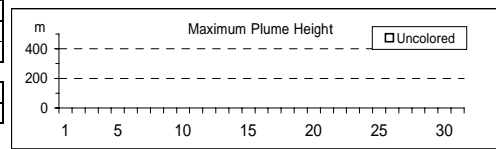
遠望観測(Visual Observation)

	最大(起日) max (date)
噴煙量(Quantity of plumes) (JMA's scale)	-
噴煙の高さ(Height of plumes) (m)	-
噴煙の色(Color of plumes)	-
他の火山現象(Other volcanic phenomena)	-

Note: Plumes were from RegionA and/or RegionB.

Note: Uncolored:Plume color was White(W).

Colored:Plume color was Light white(LW), Grayish white(GW), Gray(G) and other.



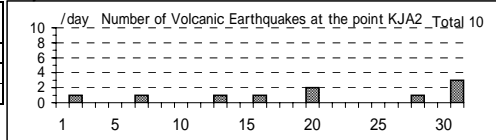
(39) 九重山

震動観測(Seismic Observation)

	月計 total	最大(起日) max (date)
Observation Point: KJA2		
火山性地震回数(Number of volcanic earthquakes)	10	3 (31)
火山性微動回数(Number of volcanic tremors)	-	-
微動継続時間(Duration of volcanic tremors) (min.)	-	-

Note: KJA2 (N33 06.2' E131 13.8' H1,282m)

Kujusan: December,2010



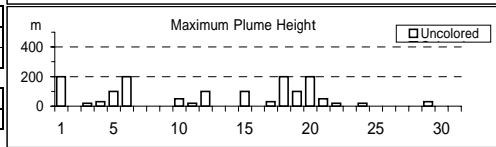
遠望観測(Visual Observation)

	最大(起日) max (date)
噴煙量(Quantity of plumes) (JMA's scale)	1 (abbr.)
噴煙の高さ(Height of plumes) (m)	200 (abbr.)
噴煙の色(Color of plumes)	W
他の火山現象(Other volcanic phenomena)	-

Note: Plumes were from the east and/or north-east flank of Mt. Hosho (Location A,B,C or D).

Note: Uncolored:Plume color was White(W).

Colored:Plume color was Light white(LW), Grayish white(GW), Gray(G) and other.



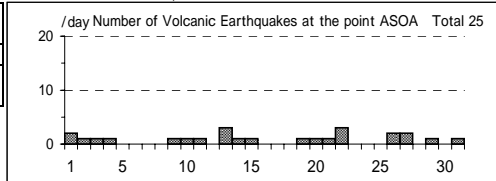
(40) 阿蘇山

震動観測(Seismic Observation)

	月計 total	最大(起日) max (date)
Observation Point: ASOA		
火山性地震回数(Number of volcanic earthquakes)	25	3 (13,22)
孤立型火山性微動回数 (Number of isolated volcanic tremors)	808	66 (28)

Note: ASOA (N32 53.1' E131 04.7' H1,163m)

Asosan: December,2010



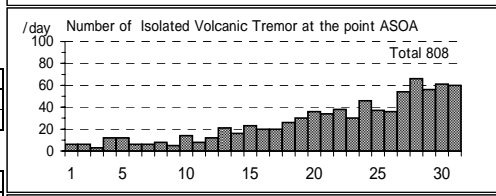
遠望観測(Visual Observation)

	最大(起日) max (date)
噴煙量(Quantity of plumes) (JMA's scale)	1 (abbr.)
噴煙の高さ(Height of plumes) (m)	400 (19)
噴煙の色(Color of plumes)	W
他の火山現象(Other volcanic phenomena)	-

Note: Plumes were from the Crater No.1 of Mt. Nakadake.

Note: Uncolored:Plume color was White(W).

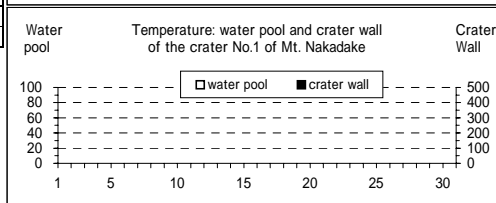
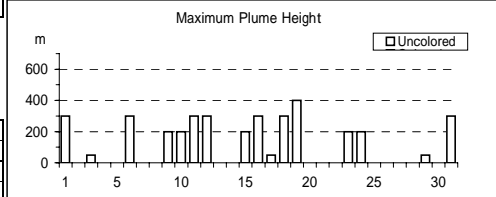
Colored:Plume color was Light white(LW), Grayish white(GW), Gray(G) and other.



現地観測(Field Observation)

	最高(起日) max (date)	最低(起日) min (date)
火口内の湯だまりの表面温度 (Surface temperature on the water pool in the crater) ( )	-	-
火口壁の表面温度 (Surface temperature on the crater wall) ( )	-	-

Observation Point:the Crater No.1 of Mt. Nakadake



(41)雲仙岳

震動観測(Seismic Observation)

	月計 total	最大(起日) max (date)
Observation Point: UNZA		
火山性地震回数(Number of volcanic earthquakes)	6	1 (abbr.)
火山性微動回数(Number of volcanic tremors)	-	-
微動継続時間(Duration of volcanic tremors) (min)	-	-

Note: UNZA (N32 44.1' E130 16.1' H769m)

遠望観測(Visual Observation)

	最大(起日) max (date)
噴煙量(Quantity of plumes) (JMA's scale)	1 (abbr.)
噴煙の高さ(Height of plumes) (m)	50 (1)

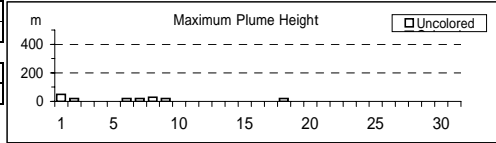
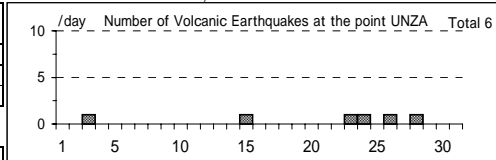
噴煙の色(Color of plumes)	W
他の火山現象(Other volcanic phenomena)	-

Note: Plumes were from the 10th Lava Dome(Location A10) and/or the 11th Lava Dome(A11).

Note: Uncolored:Plume color was White(W).

Colored:Plume color was Light white(LW), Grayish white(GW), Gray(G) and other.

Unzendake: December,2010



(42)霧島山

新燃岳 (Shinmoedake)

震動観測(Seismic Observation)

	月計 total	最大(起日) max (date)
Observation Point: KIRA		
火山性地震回数(Number of volcanic earthquakes)	203	42 (5)
火山性微動回数(Number of volcanic tremors)	4	1 (abbr.)
微動継続時間(Duration of volcanic tremors) (min)	13	6 (11)

Note: KIRA (N31 54.0' E130 52.3' H1,035m)

遠望観測(Visual Observation)

	最大(起日) max (date)
噴煙量(Quantity of plumes) (JMA's scale)	1 (abbr.)
噴煙の高さ(Height of plumes) (m)	200 (abbr.)

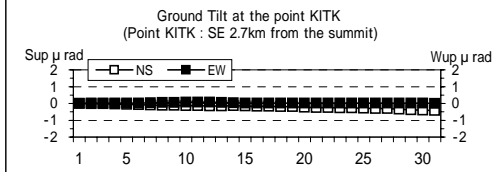
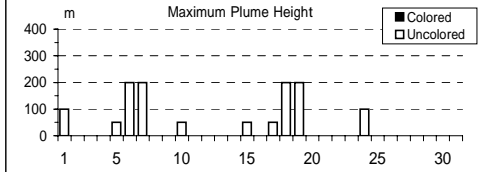
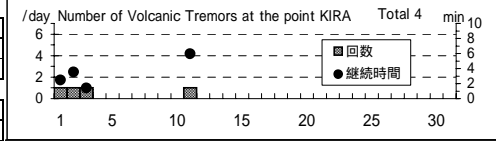
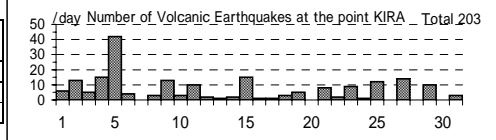
噴煙の色(Color of plumes)	W
他の火山現象(Other volcanic phenomena)	-

Note: Plumes were from the Shinmoedake Crater

Note: Uncolored:Plume color was White(W).

Colored:Plume color was Light white(LW), Grayish white(GW), Gray(G) and other.

Kirishimayama: December,2010



御鉢(Ohachi)

震動観測(Seismic Observation)

	月計 total	最大(起日) max (date)
Observation Point: KTCM		
火山性地震回数(Number of volcanic earthquakes)	4	1 (abbr.)
火山性微動回数(Number of volcanic tremors)	-	-
微動継続時間(Duration of volcanic tremors) (min)	-	-

Note: KTCM (N31 53.2' E130 55.2' H1,549m)

遠望観測(Visual Observation)

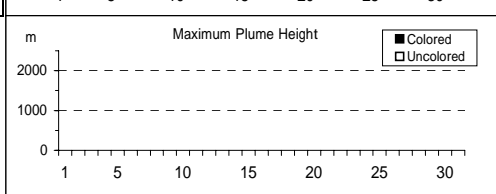
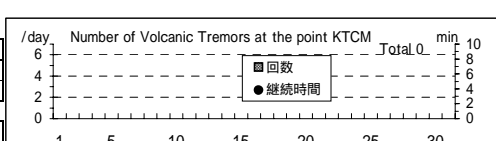
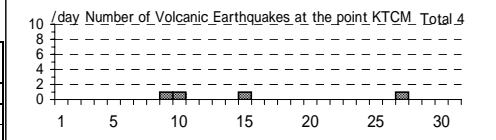
	最大(起日) max (date)
噴煙量(Quantity of plumes) (JMA's scale)	-
噴煙の高さ(Height of plumes) (m)	-

噴煙の色(Color of plumes)	-
他の火山現象(Other volcanic phenomena)	-

Note: Plumes were from the Ohachi Crater

Note: Uncolored:Plume color was White(W).

Colored:Plume color was Light white(LW), Grayish white(GW), Gray(G) and other.



(43)桜島

震動観測(Seismic Observation)

	月計 total	最大(起日) max (date)
Observation Point: SKRB		
火山性地震回数(Number of volcanic earthquakes)	560	40 (2)
火山性微動回数(Number of volcanic tremors)	393	48 (26)
微動継続時間(Duration of volcanic tremors) (min)	2056	340 (26)

Note: SKRB (N31°35.6' E130°38.4' H455m)

遠望観測(Visual Observation)

	月計 total	最大(起日) max (date)
爆発回数(Number of explosive eruptions)	52	14 (2)
降灰量(Amount of ash fall) (g/m <sup>2</sup> )	7	4 (1)

A,B火口(A,B crater)	最大(起日) max (date)
噴煙量(Quantity of plumes) (JMA's scale)	1 (6)
噴煙の高さ(Height of plumes) (m)	200 (6)

昭和火口(Showa crater)	最大(起日) max (date)
噴煙量(Quantity of plumes) (JMA's scale)	3 (abbr.)
噴煙の高さ(Height of plumes) (m)	1700 (7)

噴煙の色(Color of plumes)	W,LW,GW,G
他の火山現象(Other volcanic phenomena)	Gl,As,Bm,Af

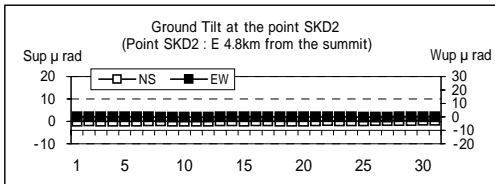
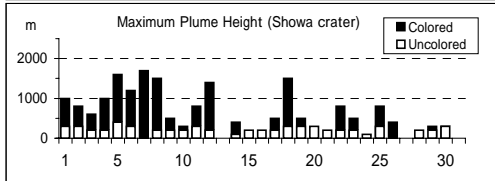
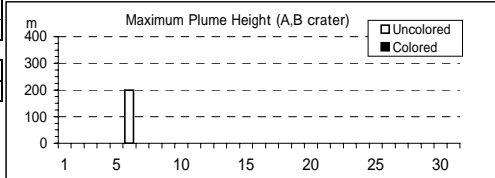
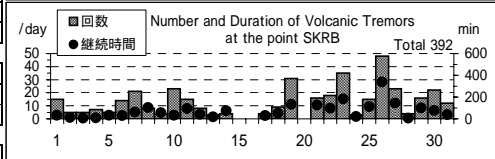
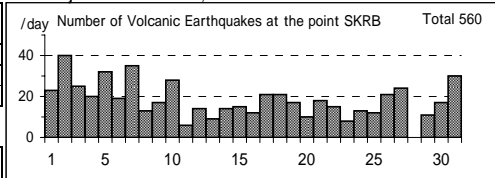
Note: Plumes were from Mt. Minamidake A Crater(A), B Crater(B) and Showa Crater(S)

Note: Uncolored:Plume color was White(W).

Colored:Plume color was Light white(LW), Grayish white(GW), Gray(G) and other.

Visual observation of explosion is described on another sheet.

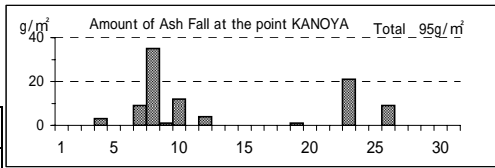
Sakurajima: December,2010



地磁気観測所鹿屋出張所による桜島の日降灰量観測

Extra observation of daily amounts of ash fall from Sakurajima by the Kanoya Satellite Observatory, the Magnetic Observatory, JMA  
Date: daily (a.m. 0900)

	月計 total	最大(起日) max (date)
Observation Point: KANOYA		
降灰量(Amount of ash fall) (g/m <sup>2</sup> )	95	35 (8)



(44)薩摩硫黄島

震動観測(Seismic Observation)

	月計 total	最大(起日) max (date)
Observation Point: ST11		
火山性地震回数(Number of volcanic earthquakes)	107	8 (4)
火山性微動回数(Number of volcanic tremors)	-	-
微動継続時間(Duration of volcanic tremors) (min.)	-	-

Note: ST11 (N30°47.3' E130°18.1' H380m)

遠望観測(Visual Observation)	最大(起日) max (date)
噴煙量(Quantity of plumes) (JMA's scale)	1 (abbr.)
噴煙の高さ(Height of plumes) (m)	300 (23)

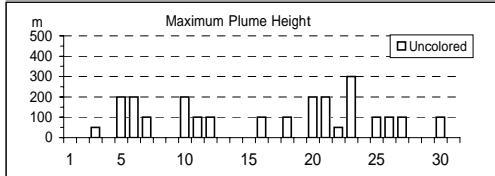
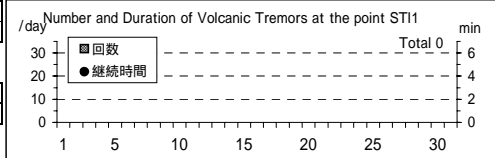
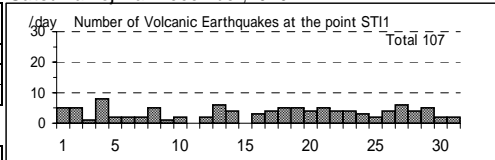
噴煙の色(Color of plumes)	W
他の火山現象(Other volcanic phenomena)	-

Note: Uncolored:Plume color was White(W)\*.

Colored:Plume color was Light white(LW), Grayish white(GW), Gray(G) and other.

\*Uncolored plumes mean only White(W) color since 1st April, 2010.

Satsuma-Iojima: December,2010



(45) 口永良部島

震動観測(Seismic Observation)

	月計 total	最大(起日) max (date)
Observation Point: KER1		
火山性地震回数(Number of volcanic earthquakes)	50	8 (28)
火山性微動回数(Number of volcanic tremors)	46	6 (22)
微動継続時間(Duration of volcanic tremors) (min.)	58	11 (23)

Note: KER1 (N30°26.9' E130°12.9' H566m)

遠望観測(Visual Observation)

	最大(起日) max (date)
噴煙量(Quantity of plumes) (JMA's scale)	1 (abbr.)
噴煙の高さ(Height of plumes) (m)	300 (5.20)

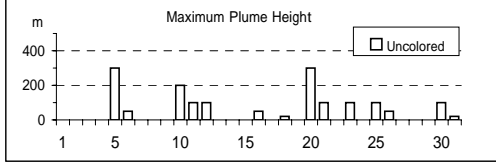
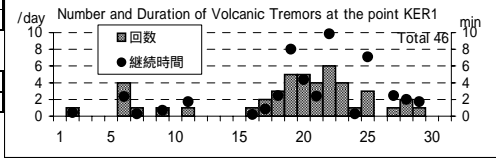
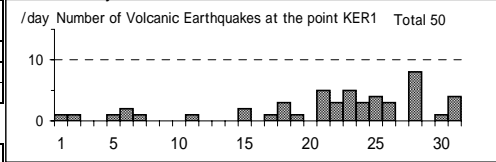
噴煙の色(Color of plumes)	W
他の火山現象(Other volcanic phenomena)	-

Note: Uncolored:Plume color was White(W)\*.

Colored:Plume color was Light white(LW), Grayish white(GW), Gray(G) and other.

\*Uncolored plumes mean only White(W) color since 1st April, 2010.

Kuchierabujima: December,2010



(46) 諏訪之瀬島

震動観測(Seismic Observation)

	月計 total	最大(起日) max (date)
Observation Point: SWA1		
火山性地震回数(Number of volcanic earthquakes)	449	78 (14)
火山性微動回数(Number of volcanic tremors)	61	11 (10)
微動継続時間(Duration of volcanic tremors) (min.)	644	127 (10)

Note: SWA1 (N29°37.7' E129°42.3' H450m)

\* Continuous volcanic tremors occurred intermittently in this month.

Number of volcanic tremors and duration are not including the continuous volcanic tremor.

遠望観測(Visual Observation)

	月計 total	最大(起日) max (date)
爆発回数(Number of explosive eruptions)	17	6 (2)

	最大(起日) max (date)
噴煙量(Quantity of plumes) (JMA's scale)	2 (5.19)
噴煙の高さ(Height of plumes) (m)	700 (19)

噴煙の色(Color of plumes)	W,LW,GW
他の火山現象(Other volcanic phenomena)	GI

Note: Uncolored:Plume color was White(W)\*

Colored:Plume color was Light white(LW), Grayish white(GW), Gray(G) and other.

\*Uncolored plumes mean only White(W) color since 1st April, 2010.

Suwanosejima: December,2010

