

火山観測 Summary of Observations on Volcanoes

連続監視 平成22年(2010年)9月

Continuous Observation in September,2010

(1)アトナスプリ

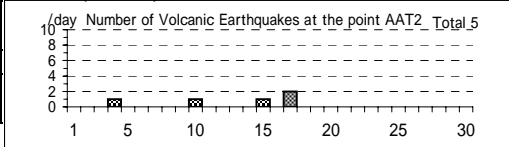
震動観測(Seismic Observation)

Observation Point: AAT2

	月計 total	最大(起日) max (date)
火山性地震回数(Number of volcanic earthquakes)	5	2 (17)
火山性微動回数(Number of volcanic tremors)	-	-
微動継続時間(Duration of volcanic tremors) (min.)	-	-

Note: AAT2 (N43 37.1' E144 27.0' H156m)

Atosanupuri: September,2010



遠望観測(Visual Observation)

	最大(起日) max (date)
噴煙量(Quantity of plumes) (JMA's scale)	1 (abbr.)
噴煙の高さ(Height of plumes) (m)	100 (abbr.)

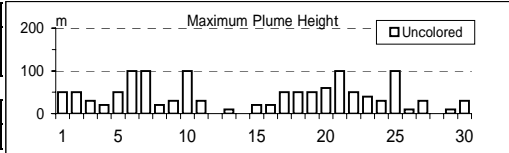
噴煙の色(Color of plumes)	W
他の火山現象(Other volcanic phenomena)	-

Note: Plumes were from Upper part of F1 Fumaroles(Location U),

Middle part of F1 Fumaroles(M) Lower part of F1 Fumaroles(L) and/or F2 Fumaroles(F)

Note: Uncolored:Plume color was White(W).

Colored:Plume color was Light white(LW), Grayish white(GW), Gray(G) and other.



(2)雌阿寒岳

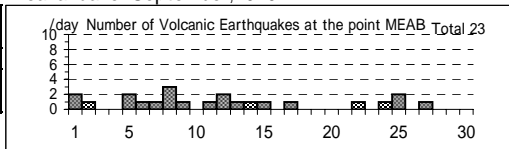
震動観測(Seismic Observation)

Observation Point: MEAB

	月計 total	最大(起日) max (date)
火山性地震回数(Number of volcanic earthquakes)	23	3 (8)
火山性微動回数(Number of volcanic tremors)	-	-
微動継続時間(Duration of volcanic tremors) (min.)	-	-

Note: MEAB (N43 22.8' E143 58.7' H680m)

Meakandake: September,2010



遠望観測(Visual Observation)

	最大(起日) max (date)
噴煙量(Quantity of plumes) (JMA's scale)	1 (abbr.)
噴煙の高さ(Height of plumes) (m)	200 (22)

噴煙の色(Color of plumes)	W
他の火山現象(Other volcanic phenomena)	-

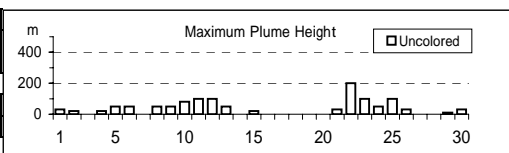
Note: Plumes were from the Pommachineshiri Summit Crater(Location T),

the Nakamachineshiri Crater(U), the Akanuma Crater(M) and/or

Pommachineshiri NW Fumaroles(N).

Note: Uncolored:Plume color was White(W).

Colored:Plume color was Light white(LW), Grayish white(GW), Gray(G) and other.



(3)大雪山

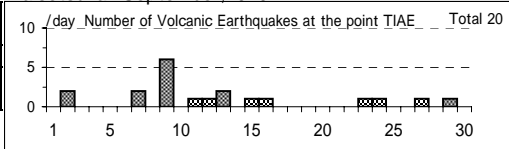
震動観測(Seismic Observation)

Observation Point: TIAE

	月計 total	最大(起日) max (date)
火山性地震回数(Number of volcanic earthquakes)	20	6 (9)
火山性微動回数(Number of volcanic tremors)	-	-
微動継続時間(Duration of volcanic tremors) (min.)	-	-

Note: TIAE (N43 39.7' E142 49.6' H1607m)

Taisetsuzan:September,2010



遠望観測(Visual Observation)

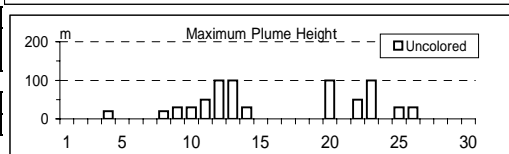
	最大(起日) max (date)
噴煙量(Quantity of plumes) (JMA's scale)	1 (abbr.)
噴煙の高さ(Height of plumes) (m)	100 (abbr.)

噴煙の色(Color of plumes)	W
他の火山現象(Other volcanic phenomena)	-

Note: Plumes were from 1 Fumaroles(Location I)

Note: Uncolored:Plume color was White(W).

Colored:Plume color was Light white(LW), Grayish white(GW), Gray(G) and other.



(4)十勝岳

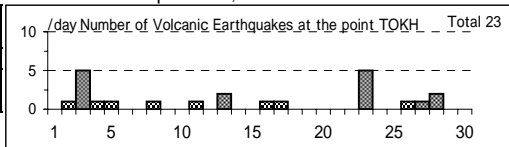
震動観測(Seismic Observation)

Observation Point: TOKH

	月計 total	最大(起日) max (date)
火山性地震回数(Number of volcanic earthquakes)	23	5 (3,23)
火山性微動回数(Number of volcanic tremors)	-	-
微動継続時間(Duration of volcanic tremors) (min.)	-	-

Note: TOKH (N43 26.0' E142 40.2' H1,355m)

Tokachidake: September,2010



遠望観測(Visual Observation)

	最大(起日) max (date)
噴煙量(Quantity of plumes) (JMA's scale)	1 (abbr.)
噴煙の高さ(Height of plumes) (m)	200 (12)

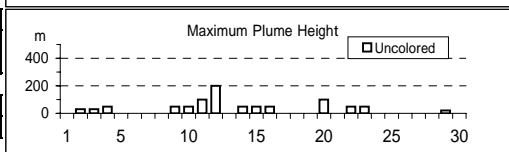
噴煙の色(Color of plumes)	W
他の火山現象(Other volcanic phenomena)	-

Note: Plumes were from the Taisho Crater(Location X),

the 62 crater Area(P,Q,Y),the Furikozawa Fumaroles (F) and/or the Kyufun Crater (Z).

Note: Uncolored:Plume color was White(W).

Colored:Plume color was Light white(LW), Grayish white(GW), Gray(G) and other.



(5) 樽前山

震動観測(Seismic Observation)

Observation Point: TARC	月計 total	最大(起日) max (date)
火山性地震回数(Number of volcanic earthquakes)	117	12 (10)
火山性微動回数(Number of volcanic tremors)	-	-
微動継続時間(Duration of volcanic tremors) (min.)	-	-

Note: TARC (N42°42.2' E141°22.6' H638m)

遠望観測(Visual Observation)

	最大(起日) max (date)
噴煙量(Quantity of plumes) (JMA's scale)	1 (abbr.)
噴煙の高さ(Height of plumes) (m)	100 (11)
噴煙の色(Color of plumes)	W
他の火山現象(Other volcanic phenomena)	-

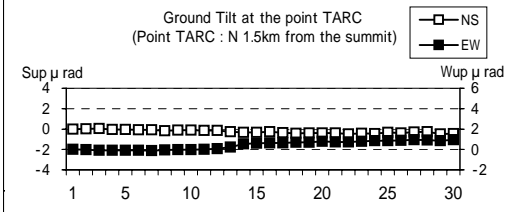
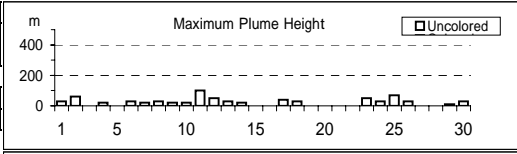
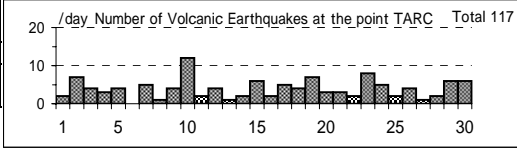
Note: Plumes were from the Summit Area(Location A, B and/or E).

Note: Uncolored:Plume color was White(W).

Colored:Plume color was Light white(LW),

Grayish white(GW), Gray(G) and other.

Tarumaesan: September,2010



(6) 倶多楽

震動観測(Seismic Observation)

Observation Point: KUJG	月計 total	最大(起日) max (date)
火山性地震回数(Number of volcanic earthquakes)	-	-
火山性微動回数(Number of volcanic tremors)	-	-
微動継続時間(Duration of volcanic tremors) (min.)	-	-

Note:KUJG (N42°29.5' E141°7.7' H327m)

遠望観測(Visual Observation)

	最大(起日) max (date)
噴煙量(Quantity of plumes) (JMA's scale)	1 (abbr.)
噴煙の高さ(Height of plumes) (m)	50 (25)
噴煙の色(Color of plumes)	W
他の火山現象(Other volcanic phenomena)	-

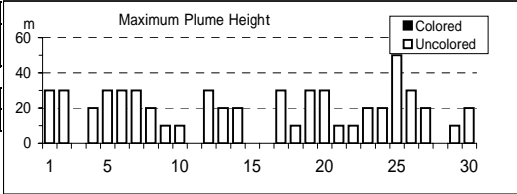
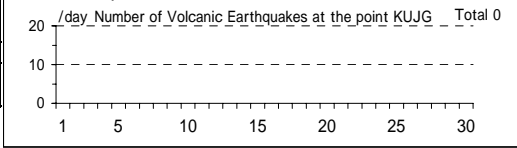
Note: Plumes were from Hiroyiyama Fumarole(Location H)

Note: Uncolored:Plume color was White(W).

Colored:Plume color was Light white(LW),

Grayish white(GW), Gray(G) and other.

Kuttara: September,2010



(7) 有珠山

震動観測(Seismic Observation)

Observation Point: USUA	月計 total	最大(起日) max (date)
火山性地震回数(Number of volcanic earthquakes)	15	2 (13,23)
火山性微動回数(Number of volcanic tremors)	-	-
微動継続時間(Duration of volcanic tremors) (min.)	-	-

Note: USUA (N42°31.7' E140°50.2' H246m)

遠望観測(Visual Observation)

	最大(起日) max (date)
噴煙量(Quantity of plumes) (JMA's scale)	1 (abbr.)
噴煙の高さ(Height of plumes) (m)	70 (5)
噴煙の色(Color of plumes)	W
他の火山現象(Other volcanic phenomena)	-

Note: Plumes were from the Summit Area of Usuzan(Location P),

Mt.showa-shinazan(Z), Nishi-yama vent group(N)

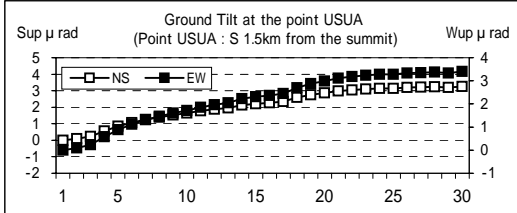
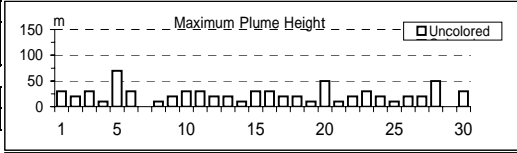
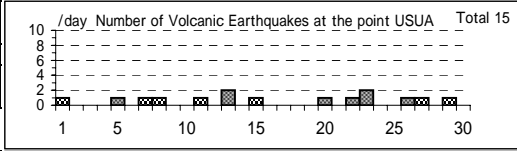
and Konpira-yama vent group(K).

Note: Uncolored:Plume color was White(W).

Colored:Plume color was Light white(LW),

Grayish white(GW), Gray(G) and other.

Usuzan: September,2010



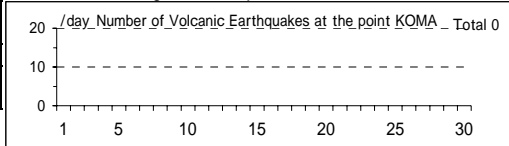
(8)北海道駒ヶ岳

Hokkaido-Komagatake: September,2010

震動観測(Seismic Observation)

Observation Point: KOMA	月計 total	最大(起日) max (date)
火山性地震回数(Number of volcanic earthquakes)	-	-
火山性微動回数(Number of volcanic tremors)	-	-
微動継続時間(Duration of volcanic tremors) (min.)	-	-

Note: KOMA (N42 03.2' E140 38.3' H265m)



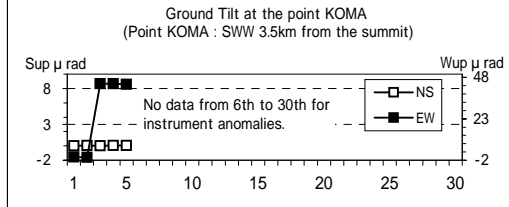
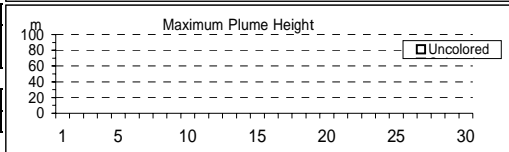
遠望観測(Visual Observation)

	最大(起日) max (date)
噴煙量(Quantity of plumes) (JMA's scale)	-
噴煙の高さ(Height of plumes) (m)	-
噴煙の色(Color of plumes)	-
他の火山現象(Other volcanic phenomena)	-

Note: Plumes were from the Showa-4 Crater(Location D1) and/or the 96 South Crater(D2).

Note: Uncolored:Plume color was White(W).

Colored:Plume color was Light white(LW), Grayish white(GW), Gray(G) and other.



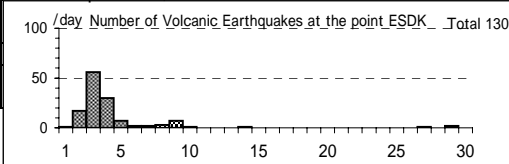
(9)恵山

Esan: September,2010

震動観測(Seismic Observation)

Observation Point: ESDK	月計 total	最大(起日) max (date)
火山性地震回数(Number of volcanic earthquakes)	130	56 (3)
火山性微動回数(Number of volcanic tremors)	-	-
微動継続時間(Duration of volcanic tremors) (min.)	-	-

Note: ESDK (N41 48.7' E141 9.7' H369m)



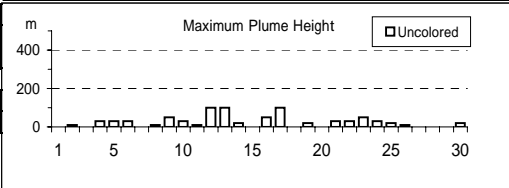
遠望観測(Visual Observation)

	最大(起日) max (date)
噴煙量(Quantity of plumes) (JMA's scale)	1 (abbr.)
噴煙の高さ(Height of plumes) (m)	100 (12,13,17)
噴煙の色(Color of plumes)	W
他の火山現象(Other volcanic phenomena)	-

Note: Plumes were from X Crater(Location X), Y Crater(Y)

Note: Uncolored:Plume color was White(W).

Colored:Plume color was Light white(LW), Grayish white(GW), Gray(G) and other.



(10)岩木山

Iwakisan: September,2010

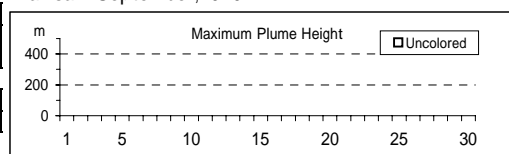
遠望観測(Visual Observation)

	最大(起日) max (date)
噴煙量(Quantity of plumes) (JMA's scale)	-
噴煙の高さ(Height of plumes) (m)	-
噴煙の色(Color of plumes)	-
他の火山現象(Other volcanic phenomena)	-

Note: Plumes were from Iwaki Summit

Note: Uncolored:Plume color was White(W).

Colored:Plume color was Light white(LW), Grayish white(GW), Gray(G) and other.



(11)秋田焼山

Akita-Yakeyama : September,2010

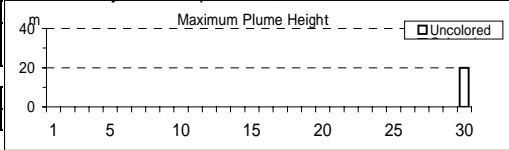
遠望観測(Visual Observation)

	最大(起日) max (date)
噴煙量(Quantity of plumes) (JMA's scale)	1 (30)
噴煙の高さ(Height of plumes) (m)	20 (30)
噴煙の色(Color of plumes)	W
他の火山現象(Other volcanic phenomena)	-

Note: Plumes were from Yakeyama Summit

Note: Uncolored:Plume color was White(W).

Colored:Plume color was Light white(LW), Grayish white(GW), Gray(G) and other.



(12)岩手山

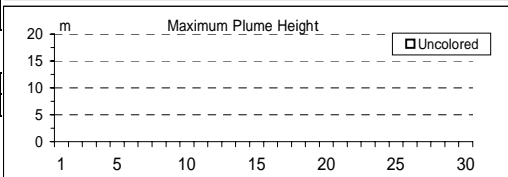
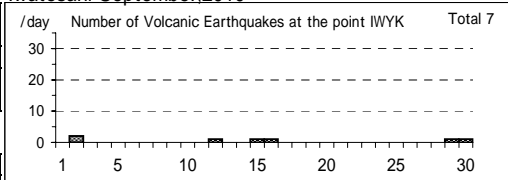
震動観測(Seismic Observation)		
Observation Point: IWYK		
火山性地震回数(Number of volcanic earthquakes)	月計 total	最大(起日) max (date)
火山性微動回数(Number of volcanic tremors)	7	2 (2)
微動継続時間(Duration of volcanic tremors) (min.)	-	-
Note: IWYK (N39 52.7' E140 57.6' H763m)		

遠望観測(Visual Observation)	
噴煙量(Quantity of plumes) (JMA's scale)	最大(起日) max (date)
噴煙の高さ(Height of plumes) (m)	-

噴煙の色(Color of plumes)	-
他の火山現象(Other volcanic phenomena)	-

Note: Plumes were from the Kurokurayama Summit(Location X), the Ojigokudani(Y-6)
 Note: Uncolored: Plume color was White(W).
 Colored: Plume color was Light white(LW), Grayish white(GW), Gray(G) and other.
 *Uncolored plumes mean only White(W) color since 1st April, 2010.

Iwatesan: September,2010



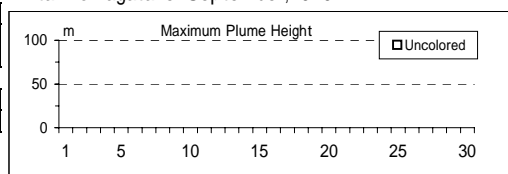
(13)秋田駒ヶ岳

遠望観測(Visual Observation)	
噴煙量(Quantity of plumes) (JMA's scale)	最大(起日) max (date)
噴煙の高さ(Height of plumes) (m)	-

噴煙の色(Color of plumes)	-
他の火山現象(Other volcanic phenomena)	-

Note: Plumes were from Medake Summit(Location Z-1a), Geothermal area on the N part of Medake Summit(Z-1b), W part of Medake Summit(Z-1c), Geothermal area on the NE slope of Medake Summit(Z-1d) and/or Crater on the E part of Medake Summit(Z-1e)
 Note: Uncolored: Plume color was White(W).
 Colored: Plume color was Light white(LW), Grayish white(GW), Gray(G) and other.

Akita-Komagatake: September,2010



(14)鳥海山

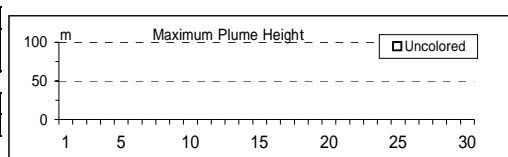
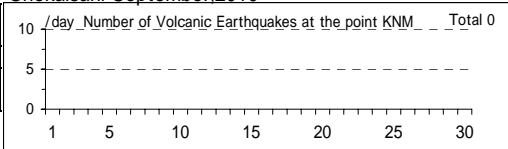
震動観測(Seismic Observation)		
Observation Point: KNM		
火山性地震回数(Number of volcanic earthquakes)	月計 total	最大(起日) max (date)
火山性微動回数(Number of volcanic tremors)	-	-
微動継続時間(Duration of volcanic tremors) (min.)	-	-
Note: KNM (N39 07.8' E139 56.4' H335m)		

遠望観測(Visual Observation)	
噴煙量(Quantity of plumes) (JMA's scale)	最大(起日) max (date)
噴煙の高さ(Height of plumes) (m)	-

噴煙の色(Color of plumes)	-
他の火山現象(Other volcanic phenomena)	-

Note: Plumes were from Sin Summit(Location Y)
 Note: Uncolored: Plume color was White(W).
 Colored: Plume color was Light white(LW), Grayish white(GW), Gray(G) and other.

Chokaisan: September,2010



(15)栗駒山

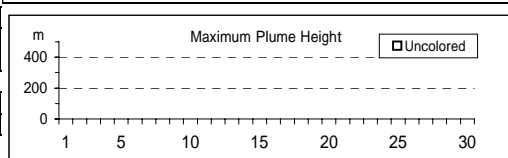
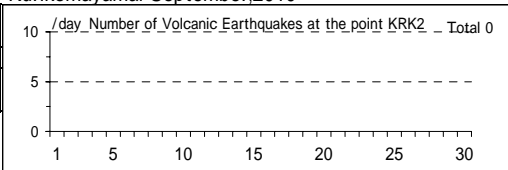
震動観測(Seismic Observation)		
Observation Point: KRK2		
火山性地震回数(Number of volcanic earthquakes)	月計 total	最大(起日) max (date)
火山性微動回数(Number of volcanic tremors)	-	-
微動継続時間(Duration of volcanic tremors) (min.)	-	-
Note: KRK2(N38 56.5' E140 49.1' H840m)		

遠望観測(Visual Observation)	
噴煙量(Quantity of plumes) (JMA's scale)	最大(起日) max (date)
噴煙の高さ(Height of plumes) (m)	-

噴煙の色(Color of plumes)	-
他の火山現象(Other volcanic phenomena)	-

Note: Plumes were from Showa Lake(Location Z-1), Old Crater (W-1)
 Note: Uncolored: Plume color was White(W).
 Colored: Plume color was Light white(LW), Grayish white(GW), Gray(G) and other.

Kurikomayama: September,2010



(16)蔵王山

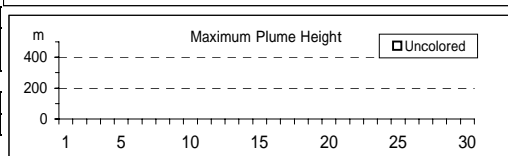
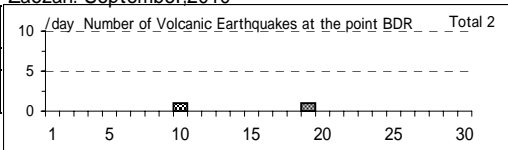
震動観測(Seismic Observation)		
Observation Point: BDR		
火山性地震回数(Number of volcanic earthquakes)	月計 total	最大(起日) max (date)
火山性微動回数(Number of volcanic tremors)	2	1 (10,19)
微動継続時間(Duration of volcanic tremors) (min.)	-	-
Note: BDR (N38 07.3' E140 23.7' H1,012m)		

遠望観測(Visual Observation)	
噴煙量(Quantity of plumes) (JMA's scale)	最大(起日) max (date)
噴煙の高さ(Height of plumes) (m)	-

噴煙の色(Color of plumes)	-
他の火山現象(Other volcanic phenomena)	-

Note: Plumes were from Okama(Location S-1b), Maruyamasawa(Y-2a)
 Note: Uncolored: Plume color was White(W).
 Colored: Plume color was Light white(LW), Grayish white(GW), Gray(G) and other.

Zaozan: September,2010

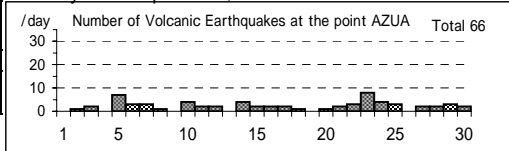


(17) 吾妻山

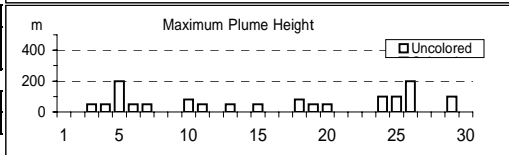
震動観測(Seismic Observation)	月計 total	最大(起日) max (date)
Observation Point: AZUA		
火山性地震回数(Number of volcanic earthquakes)	66	8 (23)
火山性微動回数(Number of volcanic tremors)	-	-
微動継続時間(Duration of volcanic tremors) (min.)	-	-

Note: AZUA (N37°43.3' E140°16.5' H1,295m)

Azumayama: September,2010



遠望観測(Visual Observation)	最大(起日) max (date)
噴煙量(Quantity of plumes) (JMA's scale)	1 (abbr.)
噴煙の高さ(Height of plumes) (m)	200 (5,26)
噴煙の色(Color of plumes)	W
他の火山現象(Other volcanic phenomena)	-



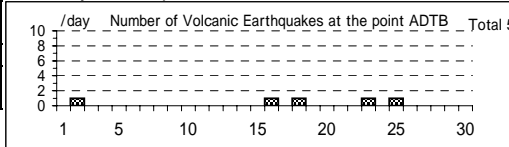
Note: Plumes were from the Oana Crater
 Note: Uncolored:Plume color was White(W).
 Colored:Plume color was Light white(LW), Grayish white(GW), Gray(G) and other.

(18) 安達太良山

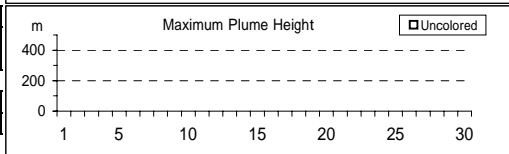
震動観測(Seismic Observation)	月計 total	最大(起日) max (date)
Observation Point: ADTB		
火山性地震回数(Number of volcanic earthquakes)	5	1 (abbr.)
火山性微動回数(Number of volcanic tremors)	-	-
微動継続時間(Duration of volcanic tremors) (min.)	-	-

Note: ADTB(N37°38.1' E140°18.2' H1,320m)

Adatarayama: September,2010



遠望観測(Visual Observation)	最大(起日) max (date)
噴煙量(Quantity of plumes) (JMA's scale)	-
噴煙の高さ(Height of plumes) (m)	-
噴煙の色(Color of plumes)	-
他の火山現象(Other volcanic phenomena)	-



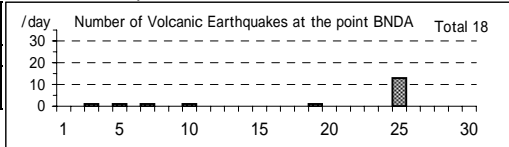
Note: Plumes were from the Numanodaira - SW area.
 Note: Uncolored:Plume color was White(W).
 Colored:Plume color was Light white(LW), Grayish white(GW), Gray(G) and other.

(19) 磐梯山

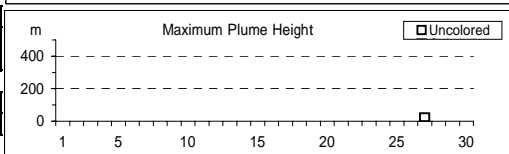
震動観測(Seismic Observation)	月計 total	最大(起日) max (date)
Observation Point: BNDA		
火山性地震回数(Number of volcanic earthquakes)	18	13 (25)
火山性微動回数(Number of volcanic tremors)	-	-
微動継続時間(Duration of volcanic tremors) (min.)	-	-

Note: BNDA(N37°35.0' E140°04.8' H1000m)

Bandaisan: September,2010



遠望観測(Visual Observation)	最大(起日) max (date)
噴煙量(Quantity of plumes) (JMA's scale)	1 (27)
噴煙の高さ(Height of plumes) (m)	50 (27)
噴煙の色(Color of plumes)	W
他の火山現象(Other volcanic phenomena)	-



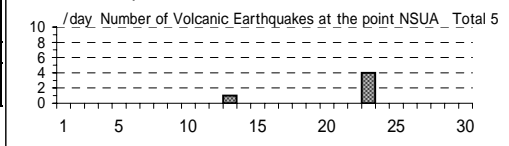
Note: Plumes were from the Fumarolic area in Crater wall.
 Note: Uncolored:Plume color was White(W).
 Colored:Plume color was Light white(LW), Grayish white(GW), Gray(G) and other.

(20) 那須岳

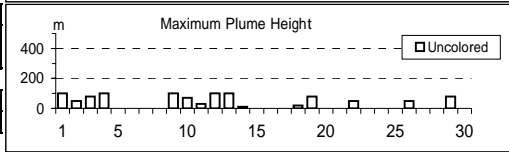
震動観測(Seismic Observation)	月計 total	最大(起日) max (date)
Observation Point: NSUA		
火山性地震回数(Number of volcanic earthquakes)	5	4 (23)
火山性微動回数(Number of volcanic tremors)	-	-
微動継続時間(Duration of volcanic tremors) (min.)	-	-

Note: NSUA (N37°06.4' E139°59.4' H1,083m)

Nasudake: September,2010



遠望観測(Visual Observation)	最大(起日) max (date)
噴煙量(Quantity of plumes) (JMA's scale)	1 (abbr.)
噴煙の高さ(Height of plumes) (m)	100 (abbr.)
噴煙の色(Color of plumes)	W
他の火山現象(Other volcanic phenomena)	-



Note: Plumes were from the west flank of Mt. Nasudake.
 Note: Uncolored:Plume color was White(W).
 Colored:Plume color was Light white(LW), Grayish white(GW), Gray(G) and other.

(21)日白根山

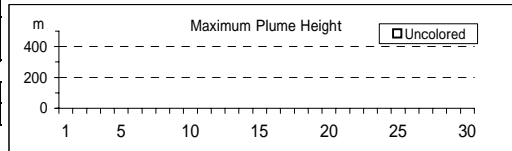
遠望観測(Visual Observation)	最大(起日) max (date)
噴煙量(Quantity of plumes) (JMA's scale)	-
噴煙の高さ(Height of plumes) (m)	-
噴煙の色(Color of plumes)	-
他の火山現象(Other volcanic phenomena)	-

Note: Plumes were from Summit Area of Nikko-Shiranesan(Location A)

Note: Uncolored:Plume color was White(W).

Colored:Plume color was Light white(LW), Grayish white(GW), Gray(G) and other.

Nikko-Shiranesan: September,2010



(22)草津白根山

震動観測(Seismic Observation)	月計 total	最大(起日) max (date)
Observation Point: KSHA	12	2 (18,28)
火山性地震回数(Number of volcanic earthquakes)	-	-
火山性微動回数(Number of volcanic tremors)	-	-
微動継続時間(Duration of volcanic tremors) (min.)	-	-

Note: KSHA (N36°38.9' E138°32.7' H1,933m)

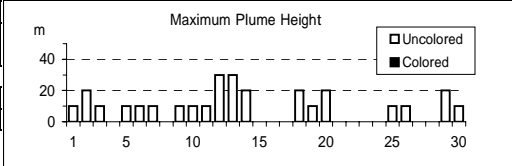
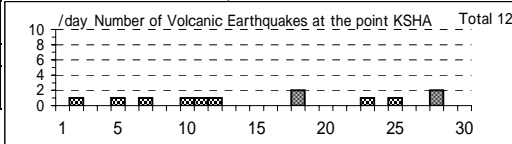
遠望観測(Visual Observation)	最大(起日) max (date)
噴煙量(Quantity of plumes) (JMA's scale)	1 (abbr.)
噴煙の高さ(Height of plumes) (m)	30 (12,13)
噴煙の色(Color of plumes)	W
他の火山現象(Other volcanic phenomena)	-

Note: Plumes were from the Yugama Crater and Fumaroles at northern side of Yugama Crater

Note: Uncolored:Plume color was White(W).

Colored:Plume color was Light white(LW), Grayish white(GW), Gray(G) and other.

Kusatsu-Shiranesan: September,2010



(23)浅間山

震動観測(Seismic Observation)	月計 total	最大(起日) max (date)
Observation Point: ASMB	197	17 (7)
火山性地震回数(Number of volcanic earthquakes)	-	-
火山性微動回数(Number of volcanic tremors)	-	-
微動継続時間(Duration of volcanic tremors) (min.)	-	-

Note: ASMB (N36°23.4' E138°31.1' H1,864m)

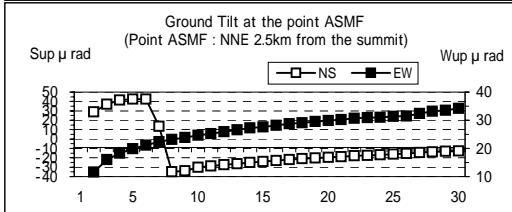
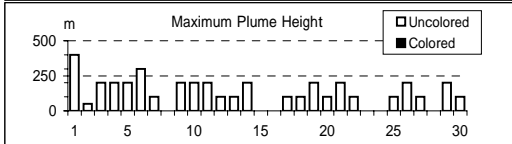
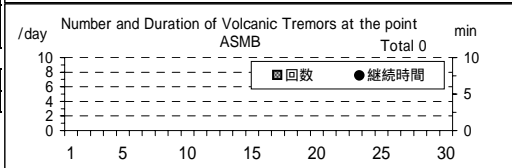
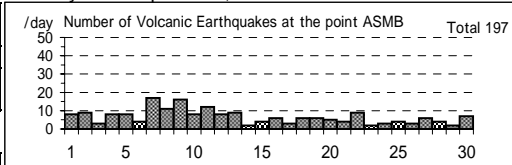
遠望観測(Visual Observation)	最大(起日) max (date)
噴煙量(Quantity of plumes) (JMA's scale)	2 (5,6,18)
噴煙の高さ(Height of plumes) (m)	400 (1)
噴煙の色(Color of plumes)	W
他の火山現象(Other volcanic phenomena)	GI

Note: Plumes were from the Kamayama Crater(Location A).

Note: Uncolored:Plume color was White(W).

Colored:Plume color was Light white(LW), Grayish white(GW), Gray(G) and other.

Asamayama: September,2010



(24)新潟焼山

震動観測(Seismic Observation)	月計 total	最大(起日) max (date)
Observation Point: NYOD,NYK2	5	2 (17)
火山性地震回数(Number of volcanic earthquakes)	-	-
火山性微動回数(Number of volcanic tremors)	-	-
微動継続時間(Duration of volcanic tremors) (min.)	-	-

Note: NYOD (N36°57.4' E138°2.3' H1,147m), NYK2 (N36°57.4' E138°2.3' H1,147m)

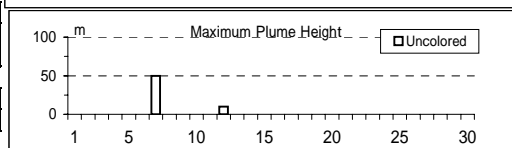
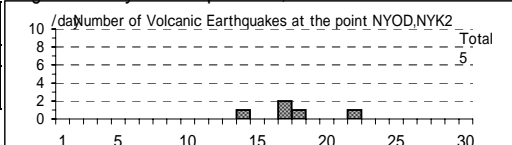
遠望観測(Visual Observation)	最大(起日) max (date)
噴煙量(Quantity of plumes) (JMA's scale)	1 (7,12)
噴煙の高さ(Height of plumes) (m)	50 (7)
噴煙の色(Color of plumes)	W
他の火山現象(Other volcanic phenomena)	-

Note: Plumes were from Upper East flank(Location A).

Note: Uncolored:Plume color was White(W).

Colored:Plume color was Light white(LW), Grayish white(GW), Gray(G) and other.

Niigata-Yakeyama: September,2010



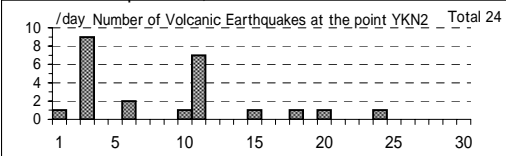
(25)焼岳

震動観測(Seismic Observation)

	月計 total	最大(起日) max (date)
火山性地震回数(Number of volcanic earthquakes)	24	9 (3)
火山性微動回数(Number of volcanic tremors)	-	-
微動継続時間(Duration of volcanic tremors) (min.)	-	-

Note: YKN2 (N36 15.7' E137 34.5' H1,151m)

Yakedake: September,2010



(26)乗鞍岳

遠望観測(Visual Observation)

	最大(起日) max (date)
噴煙量(Quantity of plumes) (JMA's scale)	-
噴煙の高さ(Height of plumes) (m)	-

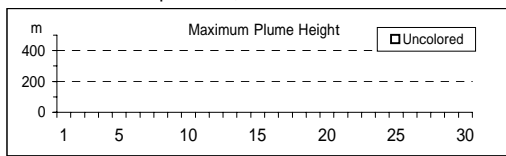
噴煙の色(Color of plumes)	-
他の火山現象(Other volcanic phenomena)	-

Note: Plumes were from Summit Crater(Location A).

Note: Uncolored:Plume color was White(W).

Colored:Plume color was Light white(LW), Grayish white(GW), Gray(G) and other.

Norikuradake: September,2010



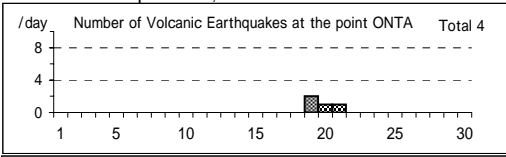
(27)御嶽山

震動観測(Seismic Observation)

	月計 total	最大(起日) max (date)
火山性地震回数(Number of volcanic earthquakes)	4	2 (19)
火山性微動回数(Number of volcanic tremors)	-	-
微動継続時間(Duration of volcanic tremors) (min.)	-	-

Note: ONTA (N35 52.6' E137 29.7' H2,228m)

Ontakesan: September,2010



遠望観測(Visual Observation)

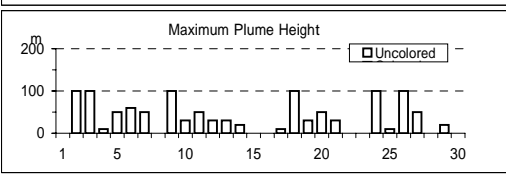
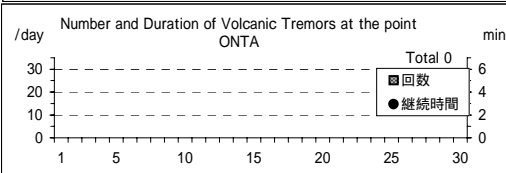
	最大(起日) max (date)
噴煙量(Quantity of plumes) (JMA's scale)	1 (abbr.)
噴煙の高さ(Height of plumes) (m)	100 (abbr.)

噴煙の色(Color of plumes)	W
他の火山現象(Other volcanic phenomena)	-

Note: Plumes were from the Otaki summit Crater (A) and/or S6

Note: Uncolored:Plume color was White(W).

Colored:Plume color was Light white(LW), Grayish white(GW), Gray(G) and other.



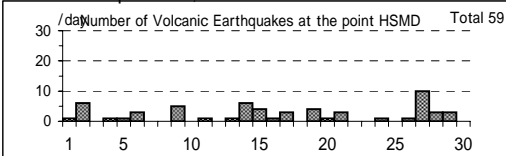
(28)白山

震動観測(Seismic Observation)

	月計 total	最大(起日) max (date)
火山性地震回数(Number of volcanic earthquakes)	59	10 (27)
火山性微動回数(Number of volcanic tremors)	-	-
微動継続時間(Duration of volcanic tremors) (min.)	-	-

Note: HSMD (N36 8.8' E136 45.9' H2,345m)

Hakusan: September,2010



遠望観測(Visual Observation)

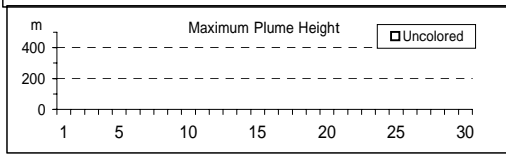
	最大(起日) max (date)
噴煙量(Quantity of plumes) (JMA's scale)	-
噴煙の高さ(Height of plumes) (m)	-

噴煙の色(Color of plumes)	-
他の火山現象(Other volcanic phenomena)	-

Note: Plumes were from Summit Area of Hakusan(Location A)

Note: Uncolored:Plume color was White(W).

Colored:Plume color was Light white(LW), Grayish white(GW), Gray(G) and other.



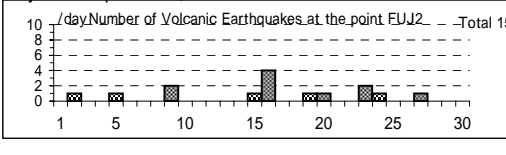
(29)富士山

震動観測(Seismic Observation)

	月計 total	最大(起日) max (date)
火山性地震回数(Number of volcanic earthquakes)	15	4 (16)
火山性微動回数(Number of volcanic tremors)	-	-
微動継続時間(Duration of volcanic tremors) (min.)	-	-

Note: FUJ2 (N35 21.6' E138 43.6' H3,772m)

Fujisan: September,2010



遠望観測(Visual Observation)

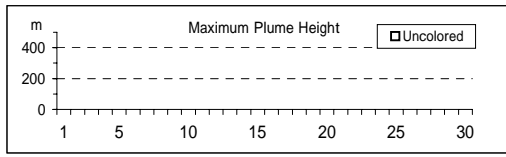
	最大(起日) max (date)
噴煙量(Quantity of plumes) (JMA's scale)	-
噴煙の高さ(Height of plumes) (m)	-

噴煙の色(Color of plumes)	-
他の火山現象(Other volcanic phenomena)	-

Note: Plumes were from Summit Crater(LocationA),Hoei Crater(B)

Note: Uncolored:Plume color was White(W).

Colored:Plume color was Light white(LW), Grayish white(GW), Gray(G) and other.



(30)箱根山

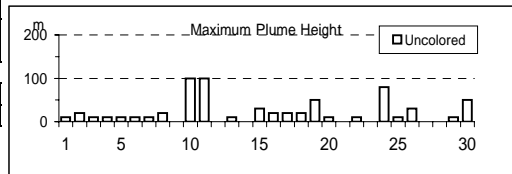
遠望観測(Visual Observation)		最大(起日) max (date)
噴煙量(Quantity of plumes) (JMA's scale)	1 (abbr.)	
噴煙の高さ(Height of plumes) (m)	100 (10.11)	
噴煙の色(Color of plumes)		W
他の火山現象(Other volcanic phenomena)		-

Note: Plumes were from Fumaroles near Owakudani(Location A), Fumaroles near Sounjigoku(B)

Note: Uncolored:Plume color was White(W).

Colored:Plume color was Light white(LW), Grayish white(GW), Gray(G) and other.

Hakoneyama: September,2010



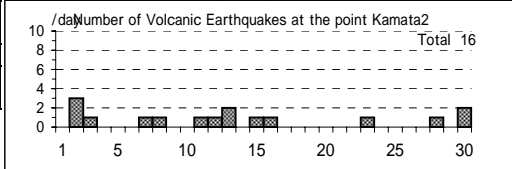
(31)伊豆東部火山群

震動観測(Seismic Observation)		月計 total	最大(起日) max (date)
Observation Point: ITBA,Kamata2			
火山性地震回数(Number of volcanic earthquakes)	16	3 (2)	
火山性微動回数(Number of volcanic tremors)	-	-	
微動継続時間(Duration of volcanic tremors) (min.)	-	-	

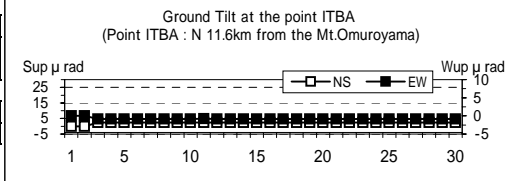
Note: ITBA (N35°00.5' E139°05.9' H12m)

Kamata2(N34°55.71' E139°03.65' H175m)

Izu-Tobu Volcano Group: September,2010



遠望観測(Visual Observation)		最大(起日) max (date)
噴煙量(Quantity of plumes) (JMA's scale)	-	
噴煙の高さ(Height of plumes) (m)	-	
噴煙の色(Color of plumes)		-
他の火山現象(Other volcanic phenomena)		-



(32)伊豆大島

震動観測(Seismic Observation)		月計 total	最大(起日) max (date)
Observation Point: OSMA			
火山性地震回数(Number of volcanic earthquakes)	331	36 (28)	
火山性微動回数(Number of volcanic tremors)	-	-	
微動継続時間(Duration of volcanic tremors) (min.)	-	-	

Note: OSMA (N34°44.2' E139°23.2' H553m)

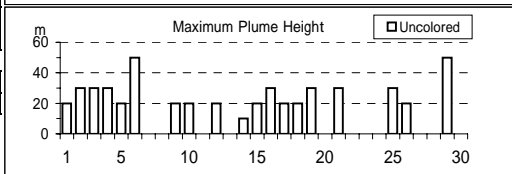
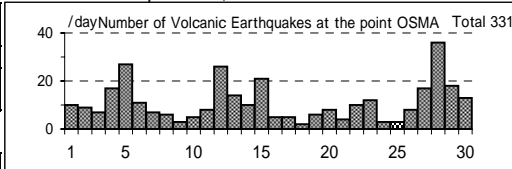
遠望観測(Visual Observation)		最大(起日) max (date)
噴煙量(Quantity of plumes) (JMA's scale)	1 (abbr.)	
噴煙の高さ(Height of plumes) (m)	50 (6.29)	
噴煙の色(Color of plumes)		W
他の火山現象(Other volcanic phenomena)		-

Note:Plumes were from the Miharayama Summit Crater(Location A), the Fumaroles at western side of Miharashinzan(A1), the Fumaroles near Kengamine(A2), the Fumaroles at eastern side of Miharashinzan(A3)

Note: Uncolored:Plume color was White(W).

Colored:Plume color was Light white(LW), Grayish white(GW), Gray(G) and other.

Izu-Oshima: September,2010

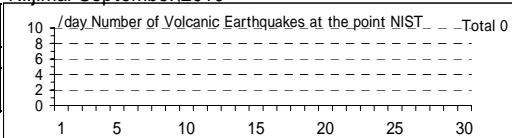


(33)新島

震動観測(Seismic Observation)		月計 total	最大(起日) max (date)
Observation Point: NIST			
火山性地震回数(Number of volcanic earthquakes)	-	-	
火山性微動回数(Number of volcanic tremors)	-	-	
微動継続時間(Duration of volcanic tremors) (min.)	-	-	

Note: NIST (N34°21.8' E139°14.9' H41m)

Niijima: September,2010

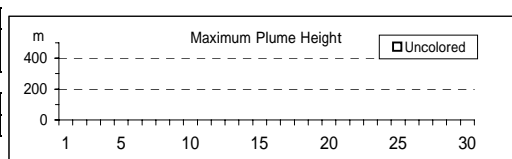


遠望観測(Visual Observation)		最大(起日) max (date)
噴煙量(Quantity of plumes) (JMA's scale)	-	
噴煙の高さ(Height of plumes) (m)	-	
噴煙の色(Color of plumes)		-
他の火山現象(Other volcanic phenomena)		-

Note: Plumes were from Summit Area of Tangoyama(Location A)

Note: Uncolored:Plume color was White(W).

Colored:Plume color was Light white(LW), Grayish white(GW), Gray(G) and other.



(34)神津島

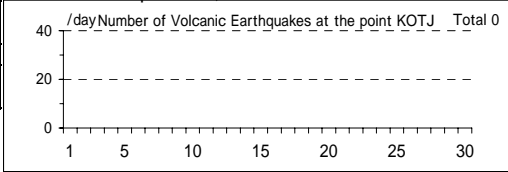
震動観測(Seismic Observation)

Observation Point: KOTJ

	月計 total	最大(起日) max (date)
火山性地震回数(Number of volcanic earthquakes)	-	-
火山性微動回数(Number of volcanic tremors)	-	-
微動継続時間(Duration of volcanic tremors) (min.)	-	-

Note: KOTJ (N34°13.2' E139°08.9' H372m)

Kozushima: September,2010



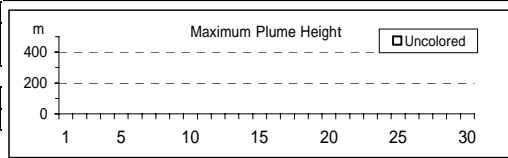
遠望観測(Visual Observation)

	最大(起日) max (date)
噴煙量(Quantity of plumes) (JMA's scale)	-
噴煙の高さ(Height of plumes) (m)	-
噴煙の色(Color of plumes)	-
他の火山現象(Other volcanic phenomena)	-

Note: Plumes were from Summit Area of Tenjosan(Location A)

Note: Uncolored:Plume color was White(W).

Colored:Plume color was Light white(LW), Grayish white(GW), Gray(G) and other.



(35)三宅島

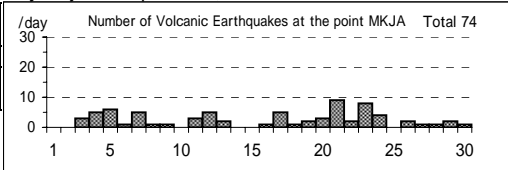
震動観測(Seismic Observation)

Observation Point: MKJA

	月計 total	最大(起日) max (date)
火山性地震回数(Number of volcanic earthquakes)	74	9 (21)
火山性微動回数(Number of volcanic tremors)	-	-
微動継続時間(Duration of volcanic tremors) (min.)	-	-

Note: MKJA (N34°06.0' E139°31.9' H473m)

Miyakejima: September,2010



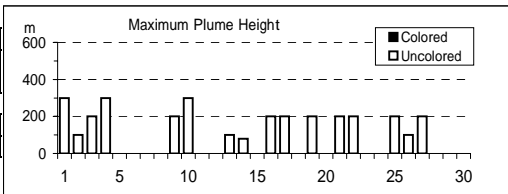
遠望観測(Visual Observation)

	最大(起日) max (date)
噴煙量(Quantity of plumes) (JMA's scale)	2 (1,4,17)
噴煙の高さ(Height of plumes) (m)	300 (1,4,10)
噴煙の色(Color of plumes)	W
他の火山現象(Other volcanic phenomena)	-

Note: Plumes were from the Summit Crater.

Note: Uncolored:Plume color was White(W).

Colored:Plume color was Light white(LW), Grayish white(GW), Gray(G) and other.



(36)八丈島

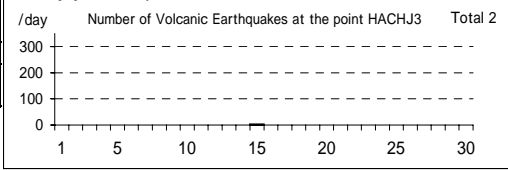
震動観測(Seismic Observation)

Observation Point: HACHJ3

	月計 total	最大(起日) max (date)
火山性地震回数(Number of volcanic earthquakes)	2	2 (15)
火山性微動回数(Number of volcanic tremors)	-	-
微動継続時間(Duration of volcanic tremors) (min.)	-	-

Note: HACHJ3 (N33°06.92' E139°48.83' H70m)

Hachijojima: September,2010



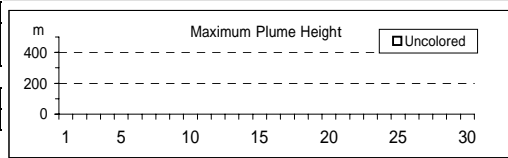
遠望観測(Visual Observation)

	最大(起日) max (date)
噴煙量(Quantity of plumes) (JMA's scale)	-
噴煙の高さ(Height of plumes) (m)	-
噴煙の色(Color of plumes)	-
他の火山現象(Other volcanic phenomena)	-

Note: Plumes were from Nishiyama Crater(Location A)

Note: Uncolored:Plume color was White(W).

Colored:Plume color was Light white(LW), Grayish white(GW), Gray(G) and other.



(37)青ヶ島

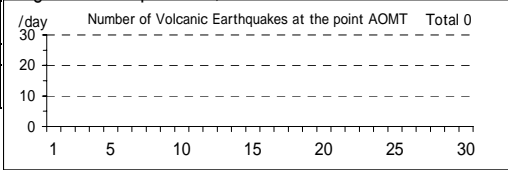
震動観測(Seismic Observation)

Observation Point: AOMT

	月計 total	最大(起日) max (date)
火山性地震回数(Number of volcanic earthquakes)	-	-
火山性微動回数(Number of volcanic tremors)	-	-
微動継続時間(Duration of volcanic tremors) (min.)	-	-

Note: AOMT (N32°28.0' E139°45.6' H273m)

Aogashima: September,2010



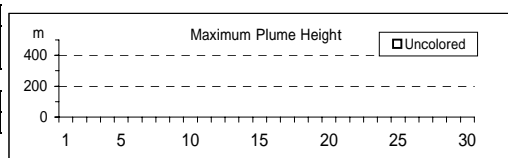
遠望観測(Visual Observation)

	最大(起日) max (date)
噴煙量(Quantity of plumes) (JMA's scale)	-
噴煙の高さ(Height of plumes) (m)	-
噴煙の色(Color of plumes)	-
他の火山現象(Other volcanic phenomena)	-

Note: Plumes were from Western flank of Maruyama(Location A)

Note: Uncolored:Plume color was White(W).

Colored:Plume color was Light white(LW), Grayish white(GW), Gray(G) and other.



(38)九重山

震動観測(Seismic Observation)

Observation Point: KJA2	月計 total	最大(起日) max (date)
火山性地震回数(Number of volcanic earthquakes)	8	3 (22)
火山性微動回数(Number of volcanic tremors)	-	-
微動継続時間(Duration of volcanic tremors) (min.)	-	-

Note: KJA2 (N33 06.2' E131 13.8' H1,282m)

遠望観測(Visual Observation)

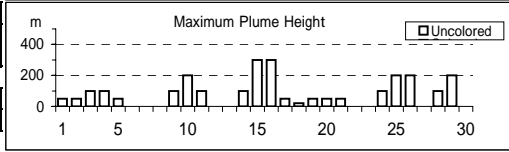
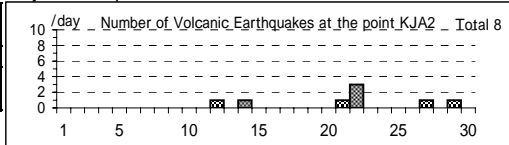
	最大(起日) max (date)
噴煙量(Quantity of plumes) (JMA's scale)	1 (abbr.)
噴煙の高さ(Height of plumes) (m)	300 (15,16)
噴煙の色(Color of plumes)	W
他の火山現象(Other volcanic phenomena)	-

Note: Plumes were from the east and/or north-east flank of Mt. Hossho (Location A,B,C or D).

Note: Uncolored:Plume color was White(W).

Colored:Plume color was Light white(LW), Grayish white(GW), Gray(G) and other.

Kujusan: September,2010



(39)阿蘇山

震動観測(Seismic Observation)

Observation Point: ASOA	月計 total	最大(起日) max (date)
火山性地震回数(Number of volcanic earthquakes)	15	3 (25)
孤立型火山性微動回数 (Number of isolated volcanic tremors)	235	17 (5)

Note: ASOA (N32 52.8' E131 04.4' H1,143m)

遠望観測(Visual Observation)

	最大(起日) max (date)
噴煙量(Quantity of plumes) (JMA's scale)	2 (11,16)
噴煙の高さ(Height of plumes) (m)	500 (16)
噴煙の色(Color of plumes)	W
他の火山現象(Other volcanic phenomena)	-

Note: Plumes were from the Crater No.1 of Mt. Nakadake.

Note: Uncolored:Plume color was White(W).

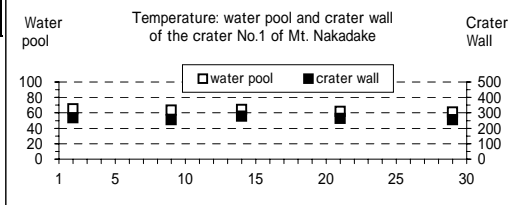
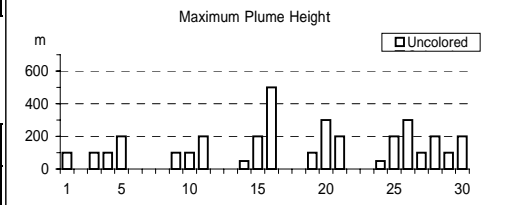
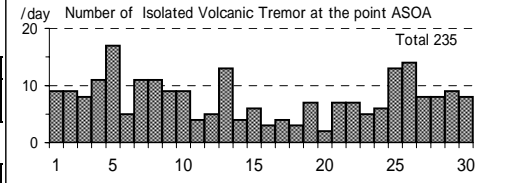
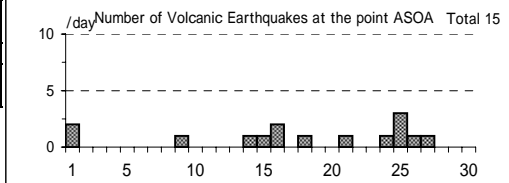
Colored:Plume color was Light white(LW), Grayish white(GW), Gray(G) and other.

現地観測(Field Observation)

	最高(起日) max (date)	最低(起日) min (date)
火口内の湯だまりの表面温度 (Surface temperature on the water pool in the crater) ()	65 (2)	61 (29)
火口壁の表面温度 (Surface temperature on the crater wall) ()	279 (14)	256 (9,29)

Observation Point:the Crater No.1 of Mt. Nakadake

Asosan: September,2010



(40)雲仙岳

震動観測(Seismic Observation)

Observation Point: UNZA	月計 total	最大(起日) max (date)
火山性地震回数(Number of volcanic earthquakes)	3	1 (1,16,26)
火山性微動回数(Number of volcanic tremors)	-	-
微動継続時間(Duration of volcanic tremors) (min.)	-	-

Note: UNZA (N32 44.1' E130 16.1' H769m)

遠望観測(Visual Observation)

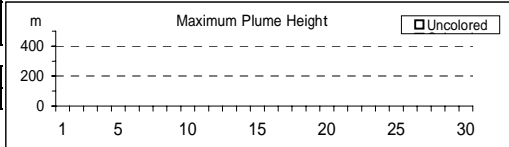
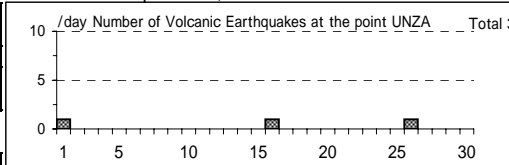
	最大(起日) max (date)
噴煙量(Quantity of plumes) (JMA's scale)	-
噴煙の高さ(Height of plumes) (m)	-
噴煙の色(Color of plumes)	-
他の火山現象(Other volcanic phenomena)	-

Note: Plumes were from the 10th Lava Dome(Location A10) and/or the 11th Lava Dome(A11).

Note: Uncolored:Plume color was White(W).

Colored:Plume color was Light white(LW), Grayish white(GW), Gray(G) and other.

Unzendake: September,2010



(41)霧島山

新燃岳 (Shinmoedake)

震動観測(Seismic Observation)

	月計 total	最大(起日) max (date)
Observation Point: KIRA		
火山性地震回数(Number of volcanic earthquakes)	89	14 (17)
火山性微動回数(Number of volcanic tremors)	-	-
微動継続時間(Duration of volcanic tremors) (min)	-	-

Note: KIRA (N31°54.0' E130°52.3' H1,035m)

遠望観測(Visual Observation)

	最大(起日) max (date)
噴煙量(Quantity of plumes) (JMA's scale)	1 (abbr.)
噴煙の高さ(Height of plumes) (m)	300 (2)

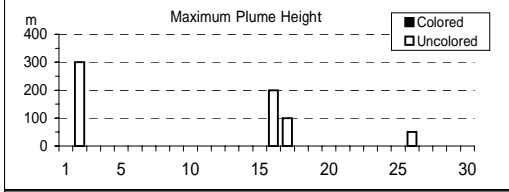
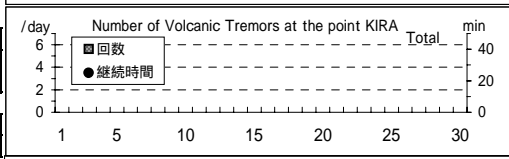
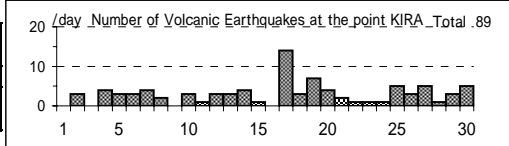
噴煙の色(Color of plumes)	W
他の火山現象(Other volcanic phenomena)	-

Note: Plumes were from the Shinmoedake Crater

Note: Uncolored:Plume color was White(W).

Colored:Plume color was Light white(LW), Grayish white(GW), Gray(G) and other.

Kirishimayama: September,2010



御鉢(Ohachi)

震動観測(Seismic Observation)

	月計 total	最大(起日) max (date)
Observation Point: KTCM		
火山性地震回数(Number of volcanic earthquakes)	19	7 (26)
火山性微動回数(Number of volcanic tremors)	-	-
微動継続時間(Duration of volcanic tremors) (min)	-	-

Note: KTCM (N31°53.2' E130°55.2' H1,540m)

遠望観測(Visual Observation)

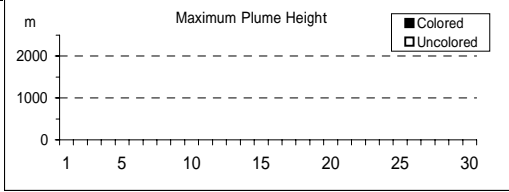
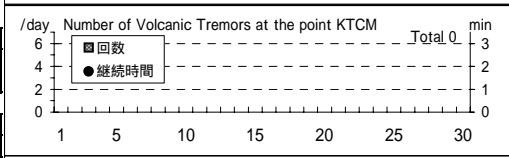
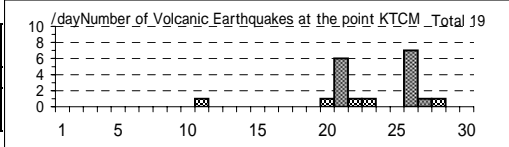
	最大(起日) max (date)
噴煙量(Quantity of plumes) (JMA's scale)	-
噴煙の高さ(Height of plumes) (m)	-

噴煙の色(Color of plumes)	-
他の火山現象(Other volcanic phenomena)	-

Note: Plumes were from the Ohachi Crater

Note: Uncolored:Plume color was White(W).

Colored:Plume color was Light white(LW), Grayish white(GW), Gray(G) and other.



(42)桜島

震動観測(Seismic Observation)

Observation Point: SKRB	月計 total	最大(起日) max (date)
火山性地震回数(Number of volcanic earthquakes)	278	25 (30)
火山性微動回数(Number of volcanic tremors)	128	16 (16,30)
微動継続時間(Duration of volcanic tremors) (min)	528	117 (5)

Note: SKRB (N31°35.6' E130°38.4' H455m)

遠望観測(Visual Observation)

爆発回数(Number of explosive eruptions)	38	8 (4)
降灰量(Amount of ash fall) (g/m ²)	11	8 (3)

A,B火口 (A,B crater)

噴煙量(Quantity of plumes) (JMA's scale)	-	最大(起日) max (date)
噴煙の高さ(Height of plumes) (m)	-	

昭和火口 (Showa crater)

噴煙量(Quantity of plumes) (JMA's scale)	4 (4)	最大(起日) max (date)
噴煙の高さ(Height of plumes) (m)	1500 (4,8)	

噴煙の色(Color of plumes)	W,LW,GW
他の火山現象(Other volcanic phenomena)	GI,As,Bm,Af,Pf

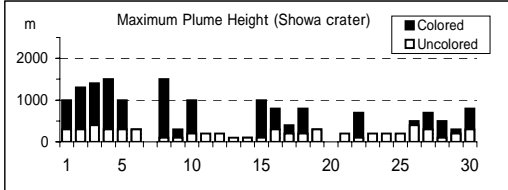
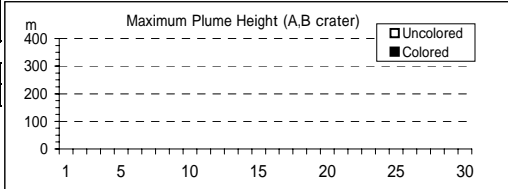
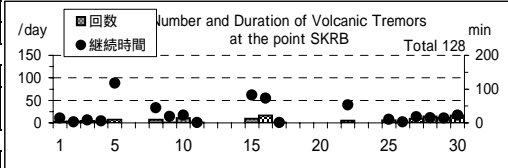
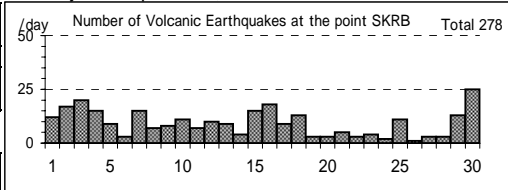
Note: Plumes were from Mt. Minamidake A Crater(A), B Crater(B) and Showa Crater(S)

Note: Uncolored:Plume color was White(W).

Colored:Plume color was Light white(LW), Grayish white(GW), Gray(G) and other.

Visual observation of explosion is described on another sheet.

Sakurajima: September,2010

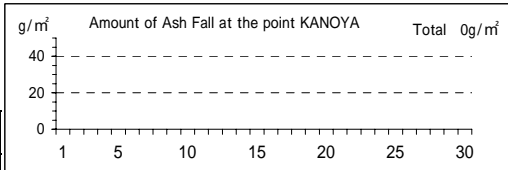


地磁気観測所鹿屋出張所による桜島の日降灰量観測

Extra observation of daily amounts of ash fall from Sakurajima by the Kanoya Satellite Observatory, the Magnetic Observatory, JMA Date: daily (a.m. 0900)

遠望観測(Visual Observation)

Observation Point: KANOYA	月計 total	最大(起日) max (date)
降灰量(Amount of ash fall) (g/m ²)	0	0



(43)薩摩硫黄島

震動観測(Seismic Observation)

Observation Point: ST11	月計 total	最大(起日) max (date)
火山性地震回数(Number of volcanic earthquakes)	557	98 (1)
火山性微動回数(Number of volcanic tremors)	-	-
微動継続時間(Duration of volcanic tremors) (min.)	-	-

Note: ST11 (N30°47.3' E130°18.1' H380m)

遠望観測(Visual Observation)

噴煙量(Quantity of plumes) (JMA's scale)	2 (2)	最大(起日) max (date)
噴煙の高さ(Height of plumes) (m)	300 (25)	

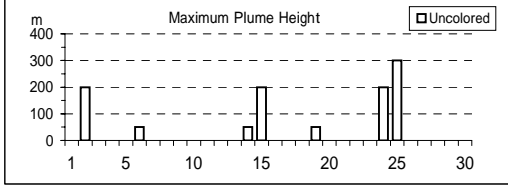
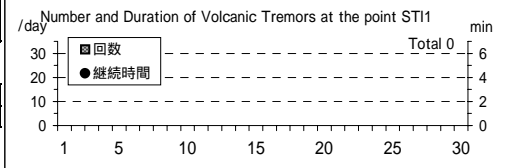
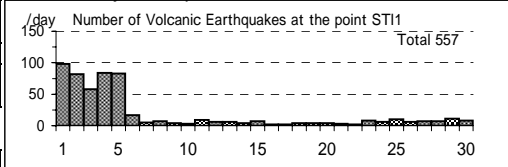
噴煙の色(Color of plumes)	W
他の火山現象(Other volcanic phenomena)	-

Note: Uncolored:Plume color was White(W)*.

Colored:Plume color was Light white(LW), Grayish white(GW), Gray(G) and other.

*Uncolored plumes mean only White(W) color since 1st April, 2010.

Satsuma-Iojima: September,2010



(44)口永良部島

震動観測(Seismic Observation)

Observation Point: KER1	月計	最大(起日)
	total	max (date)
火山性地震回数(Number of volcanic earthquakes)	24	5 (26)
火山性微動回数(Number of volcanic tremors)	33	5 (26,28)
微動継続時間(Duration of volcanic tremors) (min.)	34	9 (9)

Note: KER1 (N30°26.9' E130°12.9' H570m)

遠望観測(Visual Observation)

Observation Point: KER1	月計	最大(起日)
	total	max (date)
噴煙量(Quantity of plumes) (JMA's scale)	1	(abbr.)
噴煙の高さ(Height of plumes) (m)	200	(3,16)

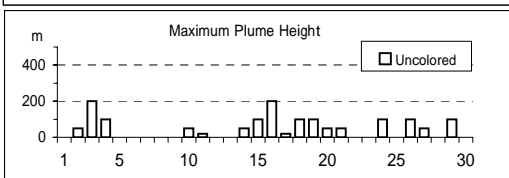
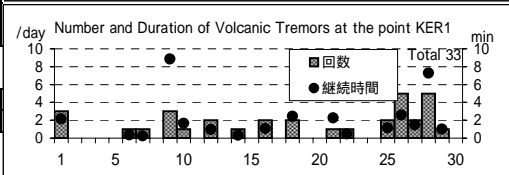
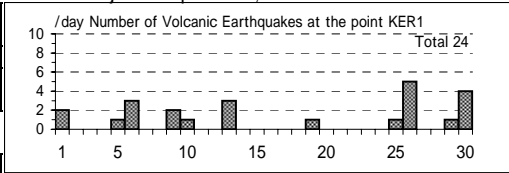
噴煙の色(Color of plumes)	W
他の火山現象(Other volcanic phenomena)	-

Note: Uncolored:Plume color was White(W)*.

Colored:Plume color was Light white(LW), Grayish white(GW), Gray(G) and other.

*Uncolored plumes mean only White(W) color since 1st April, 2010.

Kuchierabujima: September,2010



(45)諏訪之瀬島

震動観測(Seismic Observation)

Observation Point: SWA1	月計	最大(起日)
	total	max (date)
火山性地震回数(Number of volcanic earthquakes)	328	50 (2)
火山性微動回数(Number of volcanic tremors)	47	7 (18)
微動継続時間(Duration of volcanic tremors) (min.)	632	137 (18)

Note: SWA1 (N29°37.7' E129°42.3' H450m)

* Continuous volcanic tremors occurred intermittently in this month.

Number of volcanic tremors and duration are not including the continuous volcanic tremor.

遠望観測(Visual Observation)

Observation Point: SWA1	月計	最大(起日)
	total	max (date)
爆発回数(Number of explosive eruptions)	16	5 (22)

Observation Point: SWA1	月計	最大(起日)
	total	max (date)
噴煙量(Quantity of plumes) (JMA's scale)	2	(abbr.)
噴煙の高さ(Height of plumes) (m)	700	(2,22)

噴煙の色(Color of plumes)	W,GW
他の火山現象(Other volcanic phenomena)	GI

Note: Uncolored:Plume color was White(W)*

Colored:Plume color was Light white(LW), Grayish white(GW), Gray(G) and other.

*Uncolored plumes mean only White(W) color since 1st April, 2010.

Suwanosejima: September,2010

