

火山観測 Summary of Observations on Volcanoes

連続監視 平成22年(2010年)8月

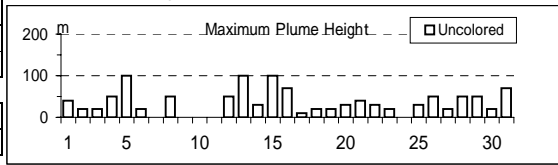
Continuous Observation in August,2010

(1)アトサヌプリ

遠望観測(Visual Observation)		最大(起日) max (date)
噴煙量(Quantity of plumes) (JMA's scale)	1 (abbr.)	
噴煙の高さ(Height of plumes) (m)	100 (5,13,15)	
噴煙の色(Color of plumes)		W
他の火山現象(Other volcanic phenomena)		-

Note: Plumes were from Upper part of F1 Fumaroles(Location U),
Middle part of F1 Fumaroles(M) Lower part of F1 Fumaroles(L) and/or F2 Fumaroles(F)
Note: Uncolored:Plume color was White(W).
Colored:Plume color was Light white(LW), Grayish white(GW), Gray(G) and other.

Atosanupuri: August,2010

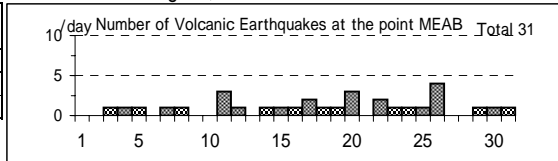


(2)雌阿寒岳

震動観測(Seismic Observation)		月計 total	最大(起日) max (date)
Observation Point: MEAB			
火山性地震回数(Number of volcanic earthquakes)	31	4 (26)	
火山性微動回数(Number of volcanic tremors)	-	-	
微動継続時間(Duration of volcanic tremors) (min.)	-	-	

Note: MEAB (N43 22.8' E143 58.7' H680m)

Meakandake: August,2010

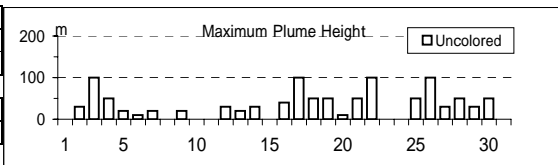


遠望観測(Visual Observation)		最大(起日) max (date)
噴煙量(Quantity of plumes) (JMA's scale)	1 (abbr.)	
噴煙の高さ(Height of plumes) (m)	100 (abbr.)	
噴煙の色(Color of plumes)		W
他の火山現象(Other volcanic phenomena)		-

Note: Plumes were from the Ponmachineshiri Summit Crater(Location T),
the Nakamachineshiri Crater(U), the Akanuma Crater(M) and/or
Ponmachineshiri NW Fumaroles(N).

Note: Uncolored:Plume color was White(W).

Colored:Plume color was Light white(LW), Grayish white(GW), Gray(G) and other.



(3)大雪山

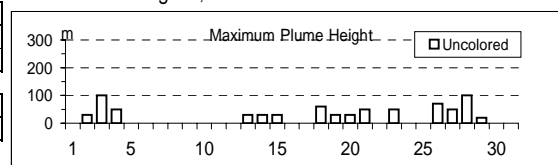
遠望観測(Visual Observation)		最大(起日) max (date)
噴煙量(Quantity of plumes) (JMA's scale)	1 (abbr.)	
噴煙の高さ(Height of plumes) (m)	100 (3,28)	
噴煙の色(Color of plumes)		W
他の火山現象(Other volcanic phenomena)		-

Note: Plumes were from 1 Fumaroles(Location I)

Note: Uncolored:Plume color was White(W).

Colored:Plume color was Light white(LW), Grayish white(GW), Gray(G) and other.

Taisetsuzan:August,2010

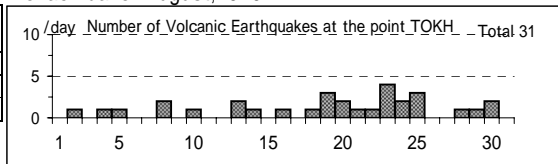


(4)十勝岳

震動観測(Seismic Observation)		月計 total	最大(起日) max (date)
Observation Point: TOKH			
火山性地震回数(Number of volcanic earthquakes)	31	4 (23)	
火山性微動回数(Number of volcanic tremors)	-	-	
微動継続時間(Duration of volcanic tremors) (min.)	-	-	

Note: TOKH (N43 26.0' E142 40.2' H1,355m)

Tokachidake: August,2010



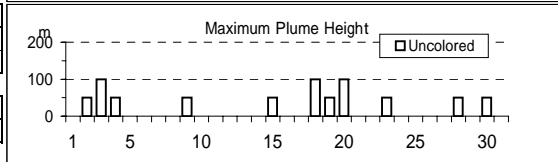
遠望観測(Visual Observation)		最大(起日) max (date)
噴煙量(Quantity of plumes) (JMA's scale)	1 (abbr.)	
噴煙の高さ(Height of plumes) (m)	100 (3,18,20)	
噴煙の色(Color of plumes)		W
他の火山現象(Other volcanic phenomena)		-

Note: Plumes were from the Taisho Crater(Location X),

the 62 crater Area(P,Q,Y),the Furikozawa Fumaroles (F) and/or the Kyufun Crater (Z).

Note: Uncolored:Plume color was White(W).

Colored:Plume color was Light white(LW), Grayish white(GW), Gray(G) and other.



(5)樽前山

震動観測(Seismic Observation)

	月計 total	最大(起日) max (date)
Observation Point: TARC		
火山性地震回数(Number of volcanic earthquakes)	117	9 (10.21)
火山性微動回数(Number of volcanic tremors)	-	-
微動継続時間(Duration of volcanic tremors) (min.)	-	-

Note: TARC (N42 42.2' E141 22.6' H638m)

遠望観測(Visual Observation)

	最大(起日) max (date)
噴煙量(Quantity of plumes) (JMA's scale)	1 (abbr.)
噴煙の高さ(Height of plumes) (m)	70 (26)

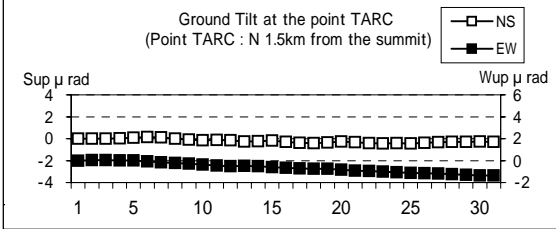
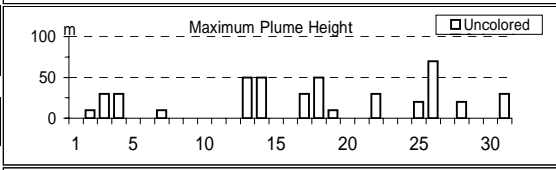
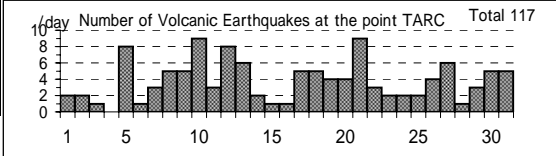
噴煙の色(Color of plumes)	W
他の火山現象(Other volcanic phenomena)	-

Note: Plumes were from the Summit Area(Location A, B and/or E).

Note: Uncolored:Plume color was White(W).

Colored:Plume color was Light white(LW),
Grayish white(GW), Gray(G) and other.

Tarumaesan: August,2010



(6)倶多楽

震動観測(Seismic Observation)

	月計 total	最大(起日) max (date)
Observation Point: KNBC		
火山性地震回数(Number of volcanic earthquakes)	-	-
火山性微動回数(Number of volcanic tremors)	-	-
微動継続時間(Duration of volcanic tremors) (min.)	-	-

Note:KNBC (N42 30.1' E141 7.4' H570m)

遠望観測(Visual Observation)

	最大(起日) max (date)
噴煙量(Quantity of plumes) (JMA's scale)	1 (abbr.)
噴煙の高さ(Height of plumes) (m)	50 (3)

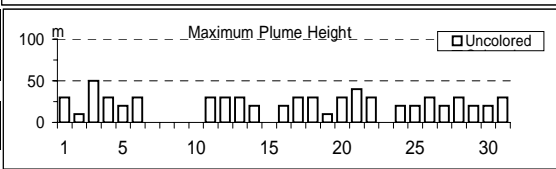
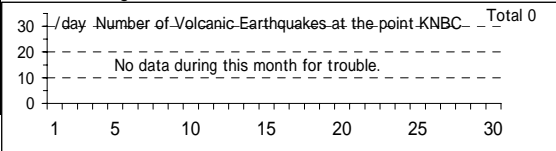
噴煙の色(Color of plumes)	W
他の火山現象(Other volcanic phenomena)	-

Note: Plumes were from Hiroyiyama Fumarole(Location H)

Note: Uncolored:Plume color was White(W).

Colored:Plume color was Light white(LW),
Grayish white(GW), Gray(G) and other.

Kuttara: August,2010



(7)有珠山

震動観測(Seismic Observation)

	月計 total	最大(起日) max (date)
Observation Point: USUA		
火山性地震回数(Number of volcanic earthquakes)	31	5 (15)
火山性微動回数(Number of volcanic tremors)	-	-
微動継続時間(Duration of volcanic tremors) (min.)	-	-

Note: USUA (N42 31.7' E140 50.2' H246m)

遠望観測(Visual Observation)

	最大(起日) max (date)
噴煙量(Quantity of plumes) (JMA's scale)	1 (abbr.)
噴煙の高さ(Height of plumes) (m)	50 (abbr.)

噴煙の色(Color of plumes)	W
他の火山現象(Other volcanic phenomena)	-

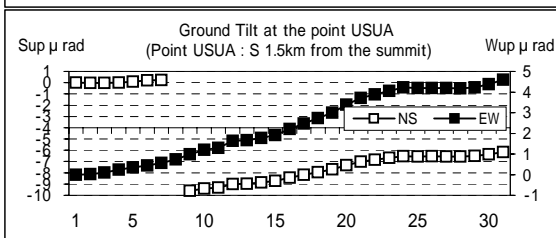
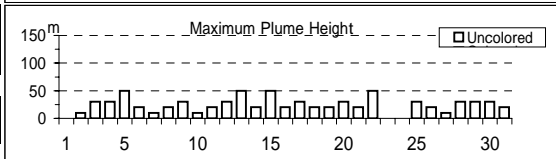
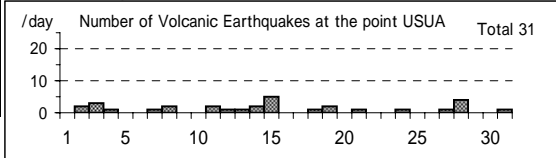
Note: Plumes were from the Summit Area of Usuzan(Location P) ,

Mt.showa-shinazan(Z), Nishi-yama vent group(N)
and Konpira-yama vent group(K).

Note: Uncolored:Plume color was White(W).

Colored:Plume color was Light white(LW),
Grayish white(GW), Gray(G) and other.

Usuzan: August,2010



(8)北海道駒ヶ岳

震動観測(Seismic Observation)

Observation Point: KOMA

	月計 total	最大(起日) max (date)
火山性地震回数(Number of volcanic earthquakes)	-	-
火山性微動回数(Number of volcanic tremors)	-	-
微動継続時間(Duration of volcanic tremors) (min.)	-	-

Note: KOMA (N42°03.2' E140°38.3' H265m)

遠望観測(Visual Observation)

	最大(起日) max (date)
噴煙量(Quantity of plumes) (JMA's scale)	-
噴煙の高さ(Height of plumes) (m)	-

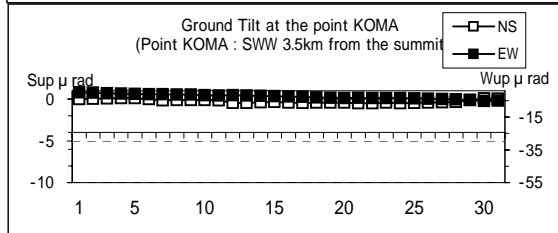
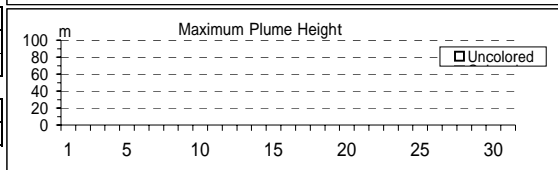
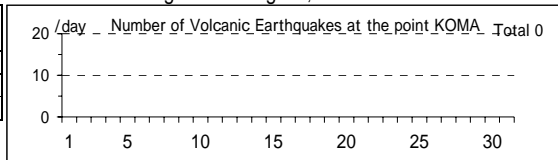
噴煙の色(Color of plumes)	-
他の火山現象(Other volcanic phenomena)	-

Note: Plumes were from the Showa-4 Crater(Location D1) and/or the 96 South Crater(D2).

Note: Uncolored:Plume color was White(W).

Colored:Plume color was Light white(LW), Grayish white(GW), Gray(G) and other.

Hokkaido-Komagatake: August,2010



(9)恵山

震動観測(Seismic Observation)

Observation Point: ESDK

	月計 total	最大(起日) max (date)
火山性地震回数(Number of volcanic earthquakes)	23	3 (4,17)
火山性微動回数(Number of volcanic tremors)	-	-
微動継続時間(Duration of volcanic tremors) (min.)	-	-

Note: ESDK (N41°48.7' E141°9.7' H369m)

遠望観測(Visual Observation)

	最大(起日) max (date)
噴煙量(Quantity of plumes) (JMA's scale)	1 (abbr.)
噴煙の高さ(Height of plumes) (m)	100 (8,26)

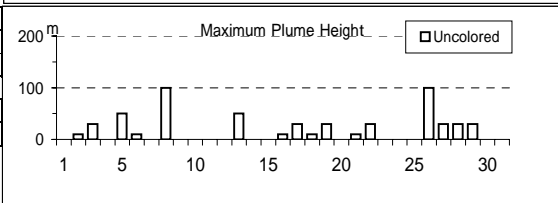
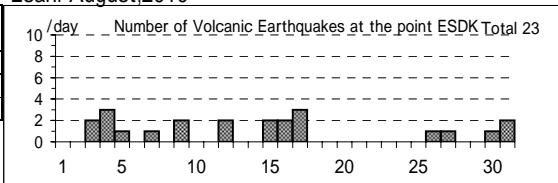
噴煙の色(Color of plumes)	W
他の火山現象(Other volcanic phenomena)	-

Note: Plumes were from X Crater(Location X), Y Crater(Y)

Note: Uncolored:Plume color was White(W).

Colored:Plume color was Light white(LW), Grayish white(GW), Gray(G) and other.

Esan: August,2010



(10)岩木山

遠望観測(Visual Observation)

	最大(起日) max (date)
噴煙量(Quantity of plumes) (JMA's scale)	-
噴煙の高さ(Height of plumes) (m)	-

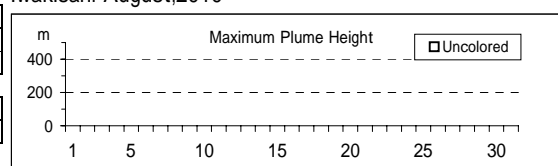
噴煙の色(Color of plumes)	-
他の火山現象(Other volcanic phenomena)	-

Note: Plumes were from Iwaki Summit

Note: Uncolored:Plume color was White(W).

Colored:Plume color was Light white(LW), Grayish white(GW), Gray(G) and other.

Iwakisan: August,2010



(11)秋田焼山

遠望観測(Visual Observation)

	最大(起日) max (date)
噴煙量(Quantity of plumes) (JMA's scale)	-
噴煙の高さ(Height of plumes) (m)	-

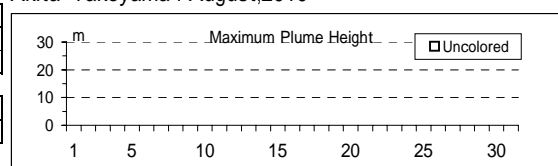
噴煙の色(Color of plumes)	-
他の火山現象(Other volcanic phenomena)	-

Note: Plumes were from Yakeyama Summit

Note: Uncolored:Plume color was White(W).

Colored:Plume color was Light white(LW), Grayish white(GW), Gray(G) and other.

Akita-Yakeyama : August,2010



(12)岩手山

震動観測(Seismic Observation)

Observation Point: IWYK	月計 total	最大(起日) max (date)
火山性地震回数(Number of volcanic earthquakes)	4	1 (abbr.)
火山性微動回数(Number of volcanic tremors)	-	-
微動継続時間(Duration of volcanic tremors) (min.)	-	-

Note:IWYK (N39 52.7' E140 57.6' H763m)

遠望観測(Visual Observation)

	最大(起日) max (date)
噴煙量(Quantity of plumes) (JMA's scale)	-
噴煙の高さ(Height of plumes) (m)	-

噴煙の色(Color of plumes)	-
他の火山現象(Other volcanic phenomena)	-

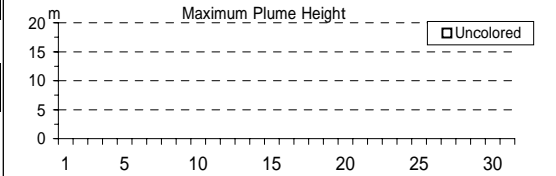
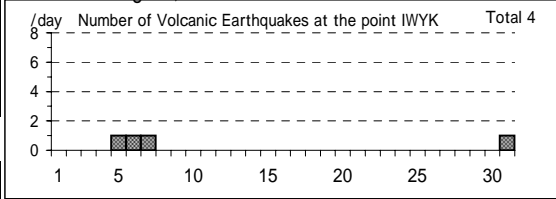
Note: Plumes were from the Kurokurayama Summit(LocationX), the Ojigokudani(Y-6)

Note: Uncolored:Plume color was White(W).*

Colored:Plume color was Light white(LW), Grayish white(GW), Gray(G) and other.

*Uncolored plumes mean only White(W) color since 1st April, 2010.

Iwatesan: August,2010



(13)秋田駒ヶ岳

遠望観測(Visual Observation)

	最大(起日) max (date)
噴煙量(Quantity of plumes) (JMA's scale)	-
噴煙の高さ(Height of plumes) (m)	-

噴煙の色(Color of plumes)	-
他の火山現象(Other volcanic phenomena)	-

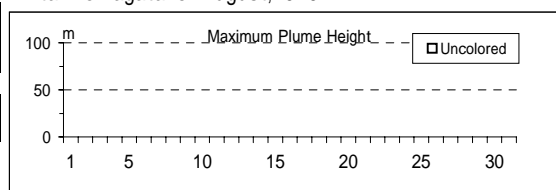
Note: Plumes were from Medake Summit(Location Z-1a), Geothermal area on the N part of Medake Summit(Z-1b), W part of Medake Summit(Z-1c),

Geothermal area on the NE slope of Medake Summit(Z-1d) and/or Crater on the E part of Medake Summit(Z-1e)

Note: Uncolored:Plume color was White(W).

Colored:Plume color was Light white(LW), Grayish white(GW), Gray(G) and other.

Akita-Komagatake: August,2010



(14)鳥海山

遠望観測(Visual Observation)

	最大(起日) max (date)
噴煙量(Quantity of plumes) (JMA's scale)	-
噴煙の高さ(Height of plumes) (m)	-

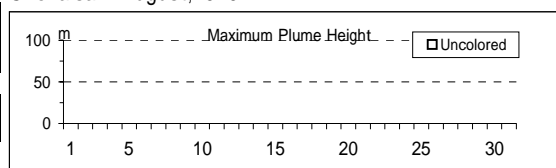
噴煙の色(Color of plumes)	-
他の火山現象(Other volcanic phenomena)	-

Note: Plumes were from Sin Summit(Location Y)

Note: Uncolored:Plume color was White(W).

Colored:Plume color was Light white(LW), Grayish white(GW), Gray(G) and other.

Chokaisan: August,2010



(15)栗駒山

遠望観測(Visual Observation)

	最大(起日) max (date)
噴煙量(Quantity of plumes) (JMA's scale)	-
噴煙の高さ(Height of plumes) (m)	-

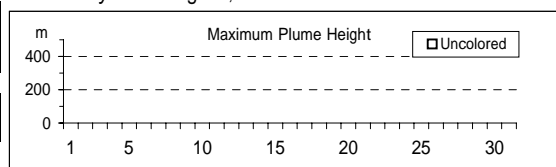
噴煙の色(Color of plumes)	-
他の火山現象(Other volcanic phenomena)	-

Note: Plumes were from Showa Lake(Location Z-1),Old Crater (W-1)

Note: Uncolored:Plume color was White(W).

Colored:Plume color was Light white(LW), Grayish white(GW), Gray(G) and other.

Kurikomayama: August,2010



(16)蔵王山

遠望観測(Visual Observation)

	最大(起日) max (date)
噴煙量(Quantity of plumes) (JMA's scale)	-
噴煙の高さ(Height of plumes) (m)	-

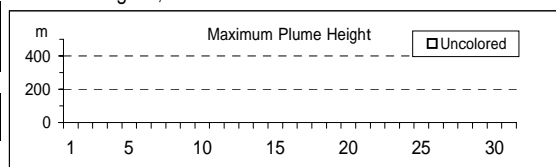
噴煙の色(Color of plumes)	-
他の火山現象(Other volcanic phenomena)	-

Note: Plumes were from Okama(Location S-1b),Maruyamasawa(Y-2a)

Note: Uncolored:Plume color was White(W).

Colored:Plume color was Light white(LW), Grayish white(GW), Gray(G) and other.

Zaozan: August,2010



(17) 吾妻山

震動観測(Seismic Observation)

	月計 total	最大(起日) max (date)
Observation Point: AZMA		
火山性地震回数(Number of volcanic earthquakes)	14	3 (1)
火山性微動回数(Number of volcanic tremors)	1	1 (1)
微動継続時間(Duration of volcanic tremors) (min.)	4	4 (1)

Note: AZMA (N37 43.3' E140 16.5' H1,295m)

遠望観測(Visual Observation)

	最大(起日) max (date)
噴煙量(Quantity of plumes) (JMA's scale)	1 (abbr.)
噴煙の高さ(Height of plumes) (m)	200 (7,8,23)

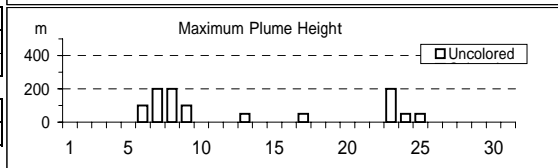
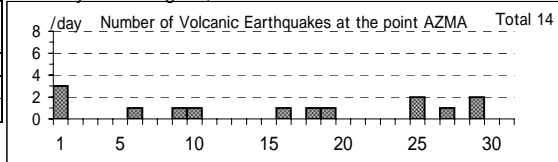
噴煙の色(Color of plumes)	W
他の火山現象(Other volcanic phenomena)	-

Note: Plumes were from the Oana Crater

Note: Uncolored:Plume color was White(W).

Colored:Plume color was Light white(LW), Grayish white(GW), Gray(G) and other.

Azumayama: August,2010



(18) 安達太良山

震動観測(Seismic Observation)

	月計 total	最大(起日) max (date)
Observation Point: ADTB		
火山性地震回数(Number of volcanic earthquakes)	2	1 (25,27)
火山性微動回数(Number of volcanic tremors)	-	-
微動継続時間(Duration of volcanic tremors) (min.)	-	-

Note: ADTB(N37 ° 38.1 E140 ° 18.2 H1,320m)

遠望観測(Visual Observation)

	最大(起日) max (date)
噴煙量(Quantity of plumes) (JMA's scale)	-
噴煙の高さ(Height of plumes) (m)	-

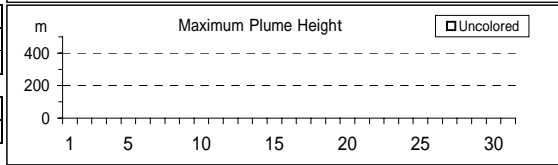
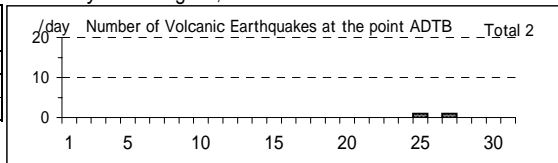
噴煙の色(Color of plumes)	-
他の火山現象(Other volcanic phenomena)	-

Note: Plumes were from the Numanodaira - SW area.

Note: Uncolored:Plume color was White(W).

Colored:Plume color was Light white(LW), Grayish white(GW), Gray(G) and other.

Adatarayama: August,2010



(19) 磐梯山

震動観測(Seismic Observation)

	月計 total	最大(起日) max (date)
Observation Point: BNDA		
火山性地震回数(Number of volcanic earthquakes)	13	5 (14)
火山性微動回数(Number of volcanic tremors)	-	-
微動継続時間(Duration of volcanic tremors) (min.)	-	-

Note: BNDA(N37 ° 35.0 E140 ° 04.8 H1000m)

遠望観測(Visual Observation)

	最大(起日) max (date)
噴煙量(Quantity of plumes) (JMA's scale)	-
噴煙の高さ(Height of plumes) (m)	-

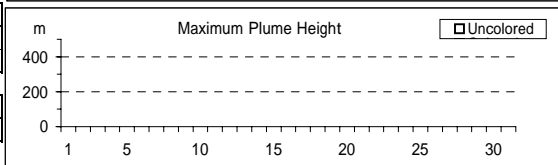
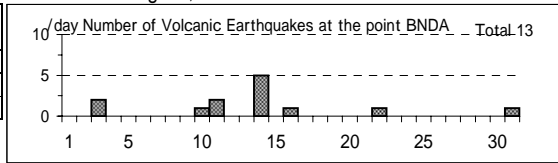
噴煙の色(Color of plumes)	-
他の火山現象(Other volcanic phenomena)	-

Note: Plumes were from the Fumarolic area in Crater wall.

Note: Uncolored:Plume color was White(W).

Colored:Plume color was Light white(LW), Grayish white(GW), Gray(G) and other.

Bandaisan: August,2010



(20) 那須岳

震動観測(Seismic Observation)

	月計 total	最大(起日) max (date)
Observation Point: NSUA		
火山性地震回数(Number of volcanic earthquakes)	8	2 (8)
火山性微動回数(Number of volcanic tremors)	-	-
微動継続時間(Duration of volcanic tremors) (min.)	-	-

Note: NSUA (N37 06.2' E139 59.6' H1,083m)

遠望観測(Visual Observation)

	最大(起日) max (date)
噴煙量(Quantity of plumes) (JMA's scale)	1 (abbr.)
噴煙の高さ(Height of plumes) (m)	100 (30)

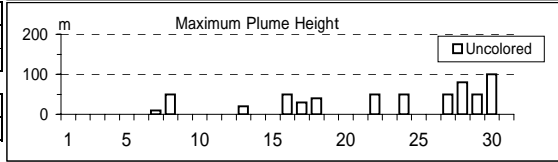
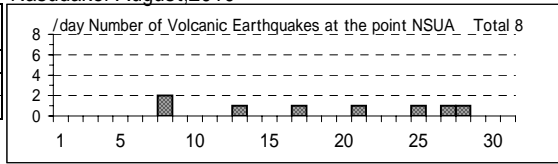
噴煙の色(Color of plumes)	W
他の火山現象(Other volcanic phenomena)	-

Note: Plumes were from the west flank of Mt. Nasudake.

Note: Uncolored:Plume color was White(W).

Colored:Plume color was Light white(LW), Grayish white(GW), Gray(G) and other.

Nasudake: August,2010



(21)日光白根山

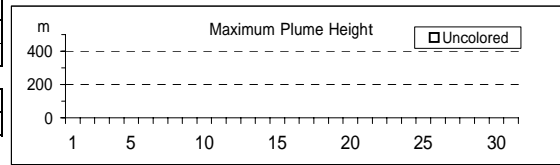
遠望観測(Visual Observation)		最大(起日) max (date)
噴煙量(Quantity of plumes) (JMA's scale)	-	-
噴煙の高さ(Height of plumes) (m)	-	-
噴煙の色(Color of plumes)		-
他の火山現象(Other volcanic phenomena)		-

Note: Plumes were from Summit Area of Nikko-Shiranesan(Location A)

Note: Uncolored:Plume color was White(W).

Colored:Plume color was Light white(LW), Grayish white(GW), Gray(G) and other.

Nikko-Shiranesan: August,2010

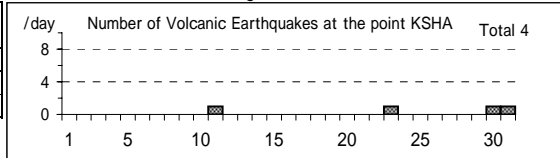


(22)草津白根山

震動観測(Seismic Observation)		月計 total	最大(起日) max (date)
Observation Point: KSHA			
火山性地震回数(Number of volcanic earthquakes)	4	1 (abbr.)	-
火山性微動回数(Number of volcanic tremors)	-	-	-
微動継続時間(Duration of volcanic tremors) (min.)	-	-	-

Note: KSHA (N36°38.9' E138°32.7' H1,933m)

Kusatsu-Shiranesan: August,2010

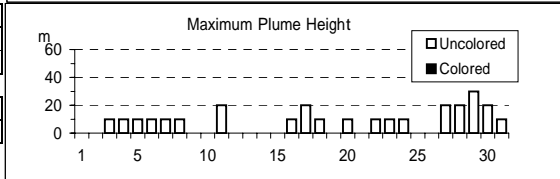


遠望観測(Visual Observation)		最大(起日) max (date)
噴煙量(Quantity of plumes) (JMA's scale)	1 (abbr.)	-
噴煙の高さ(Height of plumes) (m)	30 (29)	-
噴煙の色(Color of plumes)		W
他の火山現象(Other volcanic phenomena)		-

Note: Plumes were from the Yugama Crater and Fumaroles at northern side of Yugama Crater

Note: Uncolored:Plume color was White(W).

Colored:Plume color was Light white(LW), Grayish white(GW), Gray(G) and other.

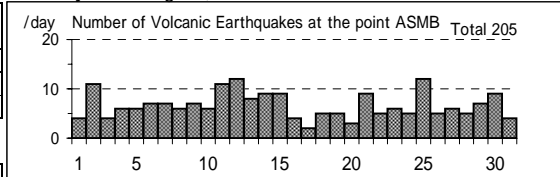


(23)浅間山

震動観測(Seismic Observation)		月計 total	最大(起日) max (date)
Observation Point: ASMB			
火山性地震回数(Number of volcanic earthquakes)	205	12 (12,25)	-
火山性微動回数(Number of volcanic tremors)	1	1 (2)	-
微動継続時間(Duration of volcanic tremors) (min.)	2	2 (2)	-

Note: ASMB (N36°23.4' E138°31.1' H1,864m)

Asamayama: August,2010

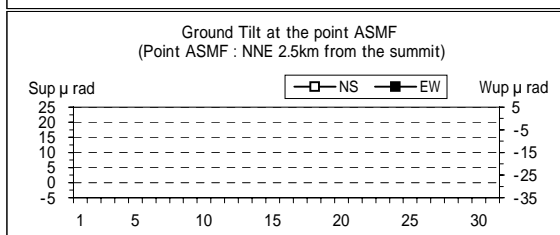
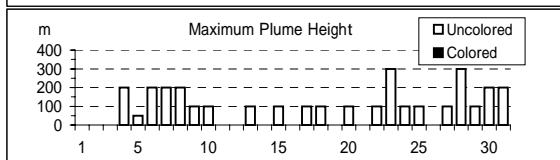
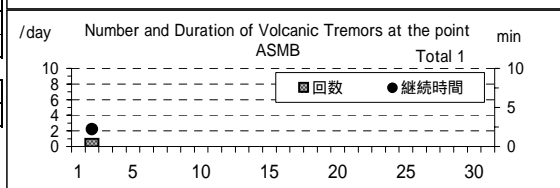


遠望観測(Visual Observation)		最大(起日) max (date)
噴煙量(Quantity of plumes) (JMA's scale)	2 (4,23,31)	-
噴煙の高さ(Height of plumes) (m)	300 (23,28)	-
噴煙の色(Color of plumes)		W
他の火山現象(Other volcanic phenomena)		-

Note: Plumes were from the Kamayama Crater(Location A).

Note: Uncolored:Plume color was White(W).

Colored:Plume color was Light white(LW), Grayish white(GW), Gray(G) and other.

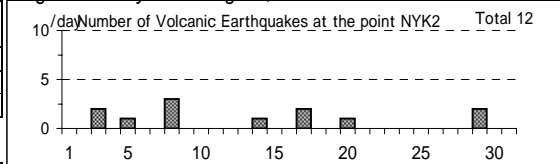


(24)新潟焼山

震動観測(Seismic Observation)		月計 total	最大(起日) max (date)
Observation Point: NYK2			
火山性地震回数(Number of volcanic earthquakes)	12	3 (8)	-
火山性微動回数(Number of volcanic tremors)	-	-	-
微動継続時間(Duration of volcanic tremors) (min.)	-	-	-

Note: NYK2 (N36°57.4' E138°2.3' H1,150m)

Niigata-Yakeyama: August,2010

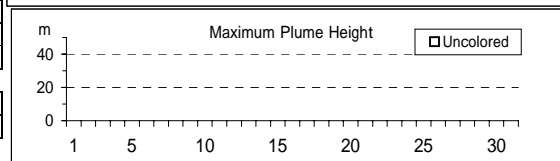


遠望観測(Visual Observation)		最大(起日) max (date)
噴煙量(Quantity of plumes) (JMA's scale)	-	-
噴煙の高さ(Height of plumes) (m)	-	-
噴煙の色(Color of plumes)		-
他の火山現象(Other volcanic phenomena)		-

Note: Plumes were from Upper East flank(Location A).

Note: Uncolored:Plume color was White(W).

Colored:Plume color was Light white(LW), Grayish white(GW), Gray(G) and other.



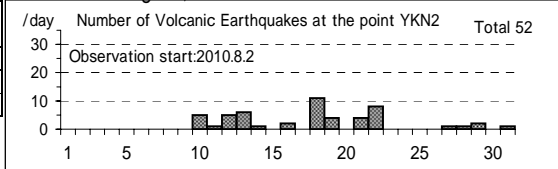
(25)焼岳

震動観測(Seismic Observation)

Observation Point: YKN2	月計 total	最大(起日) max (date)
火山性地震回数(Number of volcanic earthquakes)	52	11 (18)
火山性微動回数(Number of volcanic tremors)	-	-
微動継続時間(Duration of volcanic tremors) (min.)	-	-

Note: YKN2 (N36°15.5' E137°34.5' H1,151m)

Yakedake: August,2010



(26)乗鞍岳

遠望観測(Visual Observation)

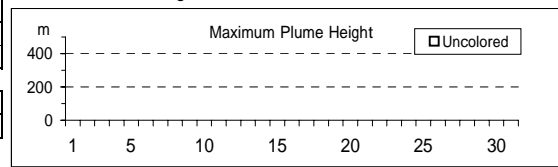
	最大(起日) max (date)
噴煙量(Quantity of plumes) (JMA's scale)	-
噴煙の高さ(Height of plumes) (m)	-
噴煙の色(Color of plumes)	-
他の火山現象(Other volcanic phenomena)	-

Note: Plumes were from Summit Crater(Location A).

Note: Uncolored:Plume color was White(W).

Colored:Plume color was Light white(LW), Grayish white(GW), Gray(G) and other.

Norikuradake: August,2010



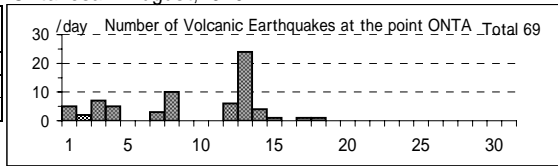
(27)御嶽山

震動観測(Seismic Observation)

Observation Point: ONTA	月計 total	最大(起日) max (date)
火山性地震回数(Number of volcanic earthquakes)	69	24 (13)
火山性微動回数(Number of volcanic tremors)	-	-
微動継続時間(Duration of volcanic tremors) (min.)	-	-

Note: ONTA (N35°52.6' E137°29.7' H2,228m)

Ontakesan: August,2010



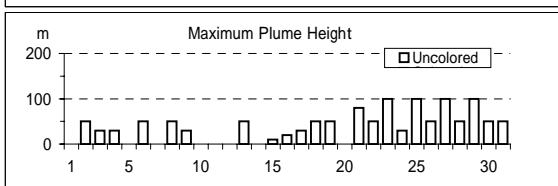
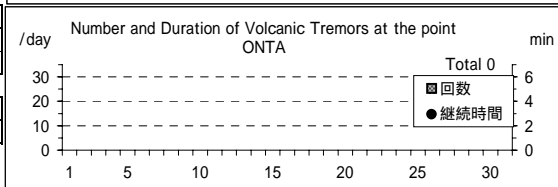
遠望観測(Visual Observation)

	最大(起日) max (date)
噴煙量(Quantity of plumes) (JMA's scale)	1 (abbr.)
噴煙の高さ(Height of plumes) (m)	100 (abbr.)
噴煙の色(Color of plumes)	W
他の火山現象(Other volcanic phenomena)	-

Note: Plumes were from the Otaki summit Crater (A) and/or S6

Note: Uncolored:Plume color was White(W).

Colored:Plume color was Light white(LW), Grayish white(GW), Gray(G) and other.



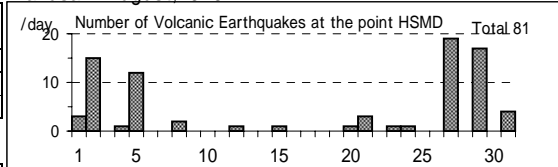
(28)白山

震動観測(Seismic Observation)

Observation Point: HSMD	月計 total	最大(起日) max (date)
火山性地震回数(Number of volcanic earthquakes)	81	19 (27)
火山性微動回数(Number of volcanic tremors)	-	-
微動継続時間(Duration of volcanic tremors) (min.)	-	-

Note: HSMD (N36°8.8' E136°45.9' H2,345m)

Hakusan: August,2010



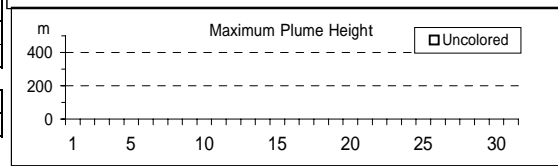
遠望観測(Visual Observation)

	最大(起日) max (date)
噴煙量(Quantity of plumes) (JMA's scale)	-
噴煙の高さ(Height of plumes) (m)	-
噴煙の色(Color of plumes)	-
他の火山現象(Other volcanic phenomena)	-

Note: Plumes were from Summit Area of Hakusan(Location A)

Note: Uncolored:Plume color was White(W).

Colored:Plume color was Light white(LW), Grayish white(GW), Gray(G) and other.



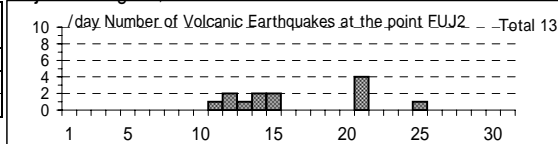
(29)富士山

震動観測(Seismic Observation)

Observation Point: FUJ2	月計 total	最大(起日) max (date)
火山性地震回数(Number of volcanic earthquakes)	13	4 (21)
火山性微動回数(Number of volcanic tremors)	-	-
微動継続時間(Duration of volcanic tremors) (min.)	-	-

Note: FUJ2 (N35°21.6' E138°43.6' H3,772m)

Fujisan: August,2010



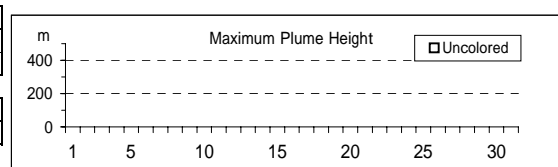
遠望観測(Visual Observation)

	最大(起日) max (date)
噴煙量(Quantity of plumes) (JMA's scale)	-
噴煙の高さ(Height of plumes) (m)	-
噴煙の色(Color of plumes)	-
他の火山現象(Other volcanic phenomena)	-

Note: Plumes were from Summit Crater(LocationA),Hoei Crater(B)

Note: Uncolored:Plume color was White(W).

Colored:Plume color was Light white(LW), Grayish white(GW), Gray(G) and other.



(30)箱根山

遠望観測(Visual Observation)	最大(起日) max (date)
噴煙量(Quantity of plumes) (JMA's scale)	1 (abbr.)
噴煙の高さ(Height of plumes) (m)	100 (abbr.)

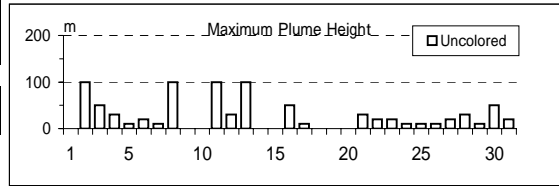
噴煙の色(Color of plumes)	W
他の火山現象(Other volcanic phenomena)	-

Note: Plumes were from Fumaroles near Owakudani(Location A), Fumaroles near Sounjigoku(B)

Note: Uncolored:Plume color was White(W).

Colored:Plume color was Light white(LW), Grayish white(GW), Gray(G) and other.

Hakoneyama: August,2010



(31)伊豆東部火山群

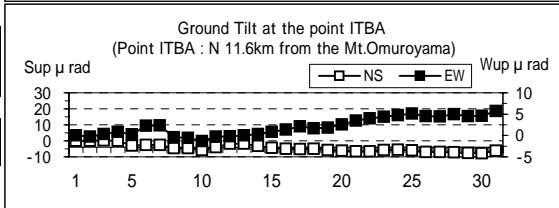
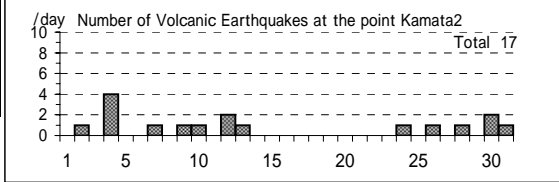
震動観測(Seismic Observation)	月計 total	最大(起日) max (date)
Observation Point: ITBA,Kamata2	17	4 (4)
火山性地震回数(Number of volcanic earthquakes)	-	-
火山性微動回数(Number of volcanic tremors)	-	-
微動継続時間(Duration of volcanic tremors) (min.)	-	-

Note: ITBA (N35 00.5' E139 05.9' H12m) Kamata2(N34 55.71' E139 03.65' H175m)

遠望観測(Visual Observation)	最大(起日) max (date)
噴煙量(Quantity of plumes) (JMA's scale)	-
噴煙の高さ(Height of plumes) (m)	-

噴煙の色(Color of plumes)	-
他の火山現象(Other volcanic phenomena)	-

Izu-Tobu Volcano Group: August,2010



(32)伊豆大島

震動観測(Seismic Observation)	月計 total	最大(起日) max (date)
Observation Point: OSMA	315	52 (28)
火山性地震回数(Number of volcanic earthquakes)	-	-
火山性微動回数(Number of volcanic tremors)	-	-
微動継続時間(Duration of volcanic tremors) (min.)	-	-

Note: OSMA (N34 44.2' E139 23.2' H553m)

遠望観測(Visual Observation)	最大(起日) max (date)
噴煙量(Quantity of plumes) (JMA's scale)	1 (abbr.)
噴煙の高さ(Height of plumes) (m)	50 (28)

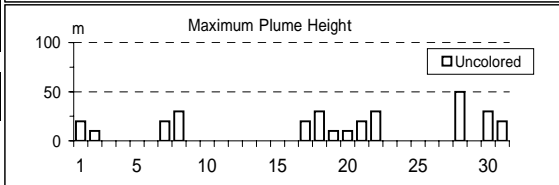
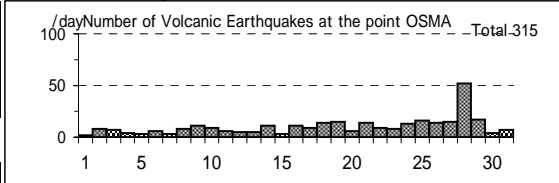
噴煙の色(Color of plumes)	W
他の火山現象(Other volcanic phenomena)	-

Note:Plumes were from the Miharayama Summit Crater(Location A), the Fumaroles at western side of Miharashinzan(A1), the Fumaroles near Kengamine(A2), the Fumaroles at eastern side of Miharashinzan(A3)

Note: Uncolored:Plume color was White(W).

Colored:Plume color was Light white(LW), Grayish white(GW), Gray(G) and other.

Izu-Oshima: August,2010



(33)新島

震動観測(Seismic Observation)	月計 total	最大(起日) max (date)
Observation Point: NIST	1	1 (30)
火山性地震回数(Number of volcanic earthquakes)	-	-
火山性微動回数(Number of volcanic tremors)	-	-
微動継続時間(Duration of volcanic tremors) (min.)	-	-

Note: NIST (N34 21.8' E139 14.9' H41m)

遠望観測(Visual Observation)	最大(起日) max (date)
噴煙量(Quantity of plumes) (JMA's scale)	-
噴煙の高さ(Height of plumes) (m)	-

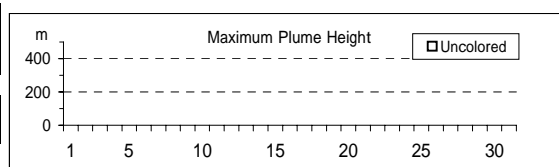
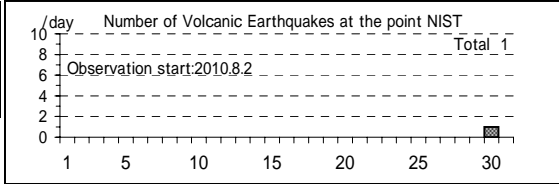
噴煙の色(Color of plumes)	-
他の火山現象(Other volcanic phenomena)	-

Note: Plumes were from Summit Area of Tangoyama(Location A)

Note: Uncolored:Plume color was White(W).

Colored:Plume color was Light white(LW), Grayish white(GW), Gray(G) and other.

Niiijima: August,2010



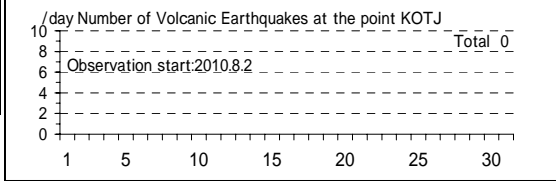
(34)神津島

震動観測(Seismic Observation)

Observation Point: KOTJ	月計 total	最大(起日) max (date)
火山性地震回数(Number of volcanic earthquakes)	-	-
火山性微動回数(Number of volcanic tremors)	-	-
微動継続時間(Duration of volcanic tremors) (min.)	-	-

Note: KOTJ (N34 13.2' E139 08.9' H372m)

Kozushima: August,2010



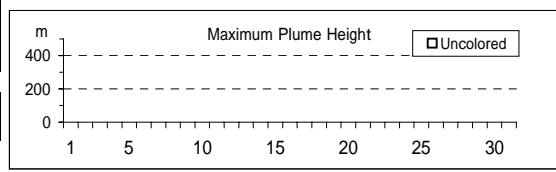
遠望観測(Visual Observation)

	最大(起日) max (date)
噴煙量(Quantity of plumes) (JMA's scale)	-
噴煙の高さ(Height of plumes) (m)	-
噴煙の色(Color of plumes)	-
他の火山現象(Other volcanic phenomena)	-

Note: Plumes were from Summit Area of Tenjosan(Location A)

Note: Uncolored:Plume color was White(W).

Colored:Plume color was Light white(LW), Grayish white(GW), Gray(G) and other.



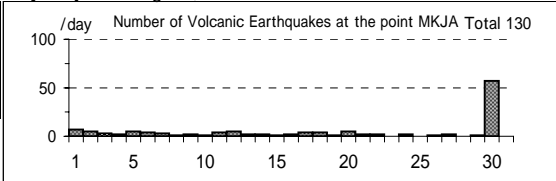
(35)三宅島

震動観測(Seismic Observation)

Observation Point: MKJA	月計 total	最大(起日) max (date)
火山性地震回数(Number of volcanic earthquakes)	130	57 (30)
火山性微動回数(Number of volcanic tremors)	-	-
微動継続時間(Duration of volcanic tremors) (min.)	-	-

Note: MKJA (N34 06.0' E139 31.9' H473m)

Miyakejima: August,2010



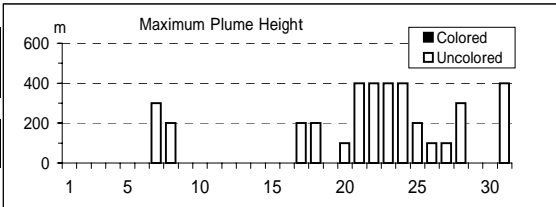
遠望観測(Visual Observation)

	最大(起日) max (date)
噴煙量(Quantity of plumes) (JMA's scale)	2 (abbr.)
噴煙の高さ(Height of plumes) (m)	400 (abbr.)
噴煙の色(Color of plumes)	W
他の火山現象(Other volcanic phenomena)	-

Note: Plumes were from the Summit Crater.

Note: Uncolored:Plume color was White(W).

Colored:Plume color was Light white(LW), Grayish white(GW), Gray(G) and other.



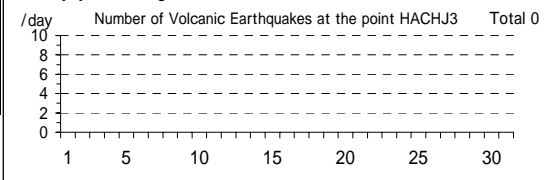
(36)八丈島

震動観測(Seismic Observation)

Observation Point: HACHJ3	月計 total	最大(起日) max (date)
火山性地震回数(Number of volcanic earthquakes)	-	-
火山性微動回数(Number of volcanic tremors)	-	-
微動継続時間(Duration of volcanic tremors) (min.)	-	-

Note: HACHJ3 (N33 06.92' E139 48.83' H70m)

Hachijojima: August,2010



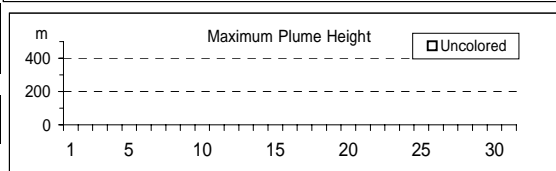
遠望観測(Visual Observation)

	最大(起日) max (date)
噴煙量(Quantity of plumes) (JMA's scale)	-
噴煙の高さ(Height of plumes) (m)	-
噴煙の色(Color of plumes)	-
他の火山現象(Other volcanic phenomena)	-

Note: Plumes were from Nishiyama Crater(Location A)

Note: Uncolored:Plume color was White(W).

Colored:Plume color was Light white(LW), Grayish white(GW), Gray(G) and other.



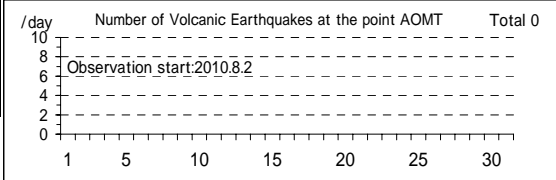
(37)青ヶ島

震動観測(Seismic Observation)

Observation Point: AOMT	月計 total	最大(起日) max (date)
火山性地震回数(Number of volcanic earthquakes)	-	-
火山性微動回数(Number of volcanic tremors)	-	-
微動継続時間(Duration of volcanic tremors) (min.)	-	-

Note: AOMT (N32 28.0' E139 45.6' H273m)

Aogashima: August,2010



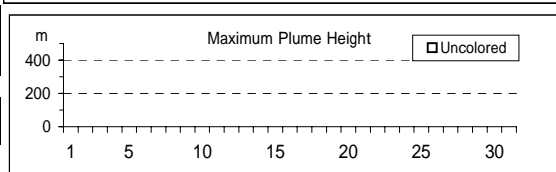
遠望観測(Visual Observation)

	最大(起日) max (date)
噴煙量(Quantity of plumes) (JMA's scale)	-
噴煙の高さ(Height of plumes) (m)	-
噴煙の色(Color of plumes)	-
他の火山現象(Other volcanic phenomena)	-

Note: Plumes were from Western flank of Maruyama(Location A)

Note: Uncolored:Plume color was White(W).

Colored:Plume color was Light white(LW), Grayish white(GW), Gray(G) and other.



(38)九重山

震動観測(Seismic Observation)

Observation Point: KJUA,KJA2

	月計 total	最大(起日) max (date)
火山性地震回数(Number of volcanic earthquakes)	4	1 (abbr.)
火山性微動回数(Number of volcanic tremors)	-	-
微動継続時間(Duration of volcanic tremors) (min.)	-	-

Note: KJUA (N33°06.2' E131°13.7' H1,280m) ,KJA2 (N33°06.2' E131°13.8' H1,280m)

遠望観測(Visual Observation)

	最大(起日) max (date)
噴煙量(Quantity of plumes) (JMA's scale)	1 (abbr.)
噴煙の高さ(Height of plumes) (m)	400 (17)

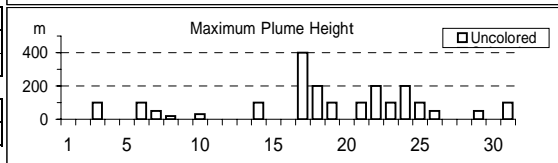
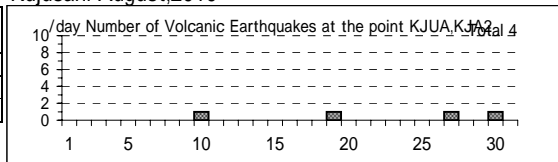
噴煙の色(Color of plumes)	W
他の火山現象(Other volcanic phenomena)	-

Note: Plumes were from the east and/or north-east flank of Mt. Hossho (Location A,B,C or D).

Note: Uncolored:Plume color was White(W).

Colored:Plume color was Light white(LW), Grayish white(GW), Gray(G) and other.

Kujusan: August,2010



(39)阿蘇山

震動観測(Seismic Observation)

Observation Point: ASOA

	月計 total	最大(起日) max (date)
火山性地震回数(Number of volcanic earthquakes)	80	23 (23)
孤立型火山性微動回数 (Number of isolated volcanic tremors)	658	64 (3)

Note: ASOA (N32 53.1' E131 04.7' H1,163m)

遠望観測(Visual Observation)

	最大(起日) max (date)
噴煙量(Quantity of plumes) (JMA's scale)	1 (abbr.)
噴煙の高さ(Height of plumes) (m)	300 (abbr.)

噴煙の色(Color of plumes)	W
他の火山現象(Other volcanic phenomena)	-

Note: Plumes were from the Crater No.1 of Mt. Nakadake.

Note: Uncolored:Plume color was White(W).

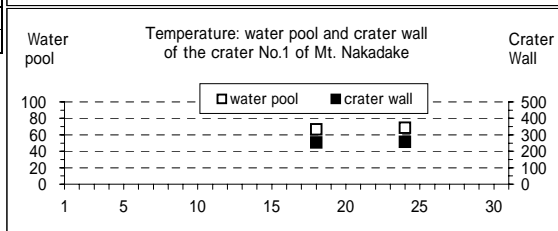
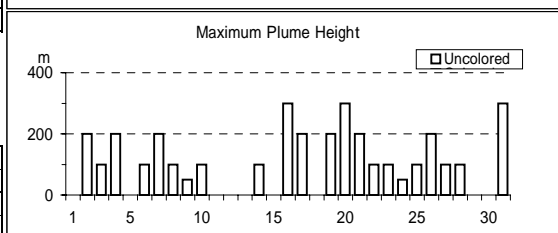
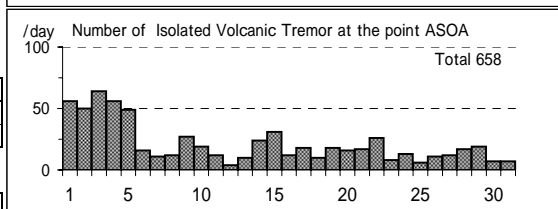
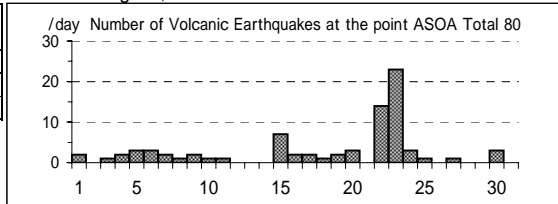
Colored:Plume color was Light white(LW), Grayish white(GW), Gray(G) and other.

現地観測(Field Observation)

	最高(起日) max (date)
火口内の湯だまりの表面温度 (Surface temperature on the water pool in the crater) ()	68 (24)
火口壁の表面温度 (Surface temperature on the crater wall) ()	257 (24)
	252 (18)

Observation Point:the Crater No.1 of Mt. Nakadake

Asosan: August,2010



(40)雲仙岳

震動観測(Seismic Observation)

Observation Point: UNZA	月計 total	最大(起日) max (date)
火山性地震回数(Number of volcanic earthquakes)	6	1 (abbr.)
火山性微動回数(Number of volcanic tremors)	-	-
微動継続時間(Duration of volcanic tremors) (min)	-	-

Note: UNZA (N32 44.1' E130 16.1' H769m)

遠望観測(Visual Observation)

	最大(起日) max (date)
噴煙量(Quantity of plumes) (JMA's scale)	-
噴煙の高さ(Height of plumes) (m)	-

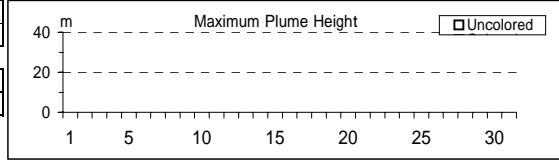
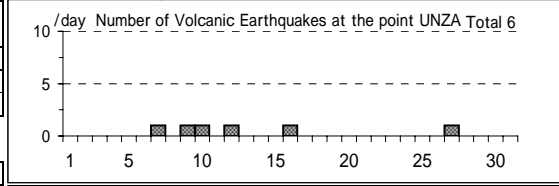
噴煙の色(Color of plumes)	-
他の火山現象(Other volcanic phenomena)	-

Note: Plumes were from the 10th Lava Dome(Location A10) and/or the 11th Lava Dome(A11).

Note: Uncolored:Plume color was White(W).

Colored:Plume color was Light white(LW), Grayish white(GW), Gray(G) and other.

Unzendake: August,2010



(41)霧島山

新燃岳 (Shinmoedake)

震動観測(Seismic Observation)

Observation Point: KIRA	月計 total	最大(起日) max (date)
火山性地震回数(Number of volcanic earthquakes)	68	9 (15)
火山性微動回数(Number of volcanic tremors)	-	-
微動継続時間(Duration of volcanic tremors) (min)	-	-

Note: KIRA (N31 54.0' E130 52.3' H1,035m)

遠望観測(Visual Observation)

	最大(起日) max (date)
噴煙量(Quantity of plumes) (JMA's scale)	1 (18)
噴煙の高さ(Height of plumes) (m)	50 (18)

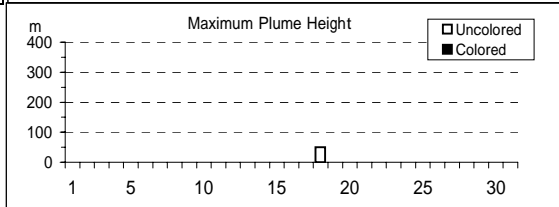
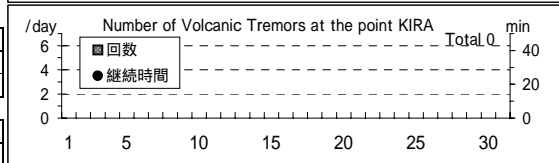
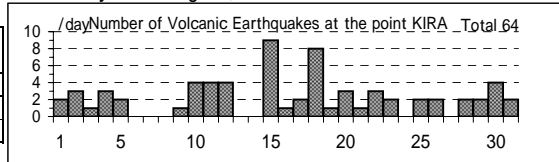
噴煙の色(Color of plumes)	W
他の火山現象(Other volcanic phenomena)	-

Note: Plumes were from the Shinmoedake Crater

Note: Uncolored:Plume color was White(W).

Colored:Plume color was Light white(LW), Grayish white(GW), Gray(G) and other.

Kirishimayama: August,2010



御鉢(Ohachi)

震動観測(Seismic Observation)

Observation Point: KTCM	月計 total	最大(起日) max (date)
火山性地震回数(Number of volcanic earthquakes)	1	1 (13)
火山性微動回数(Number of volcanic tremors)	-	-
微動継続時間(Duration of volcanic tremors) (min)	-	-

Note: KTCM (N31 53.2' E130 55.2' H1,549m)

遠望観測(Visual Observation)

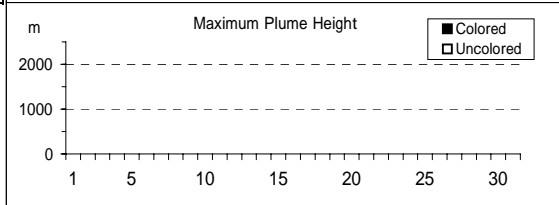
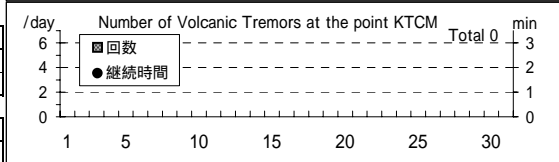
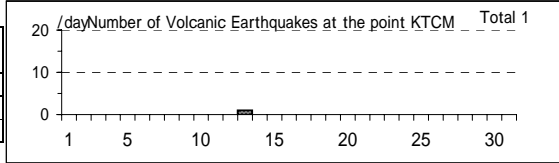
	最大(起日) max (date)
噴煙量(Quantity of plumes) (JMA's scale)	-
噴煙の高さ(Height of plumes) (m)	-

噴煙の色(Color of plumes)	-
他の火山現象(Other volcanic phenomena)	-

Note: Plumes were from the Ohachi Crater

Note: Uncolored:Plume color was White(W).

Colored:Plume color was Light white(LW), Grayish white(GW), Gray(G) and other.



(42)桜島

震動観測(Seismic Observation)

Observation Point: SKRB	月計 total	最大(起日) max (date)
火山性地震回数(Number of volcanic earthquakes)	491	35 (3)
火山性微動回数(Number of volcanic tremors)	235	32 (21)
微動継続時間(Duration of volcanic tremors) (min)	1147	229 (22)

Note: SKRB (N31°35.6' E130°38.4' H455m)

遠望観測(Visual Observation)

	月計 total	最大(起日) max (date)
爆発回数(Number of explosive eruptions)	64	8 (7)
降灰量(Amount of ash fall) (g/m ²)	66	16 (22)

A,B火口 (A,B crater)	最大(起日) max (date)
噴煙量(Quantity of plumes) (JMA's scale)	-
噴煙の高さ(Height of plumes) (m)	-

昭和火口 (Showa crater)	最大(起日) max (date)
噴煙量(Quantity of plumes) (JMA's scale)	3 (abbr.)
噴煙の高さ(Height of plumes) (m)	1500 (abbr.)

噴煙の色(Color of plumes)	W,LW,GW
他の火山現象(Other volcanic phenomena)	Gl,As,Bm,Af

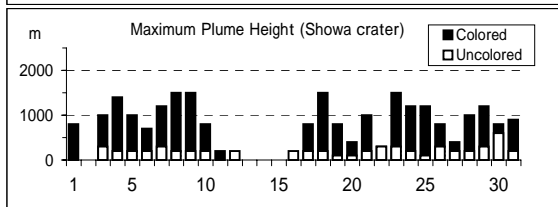
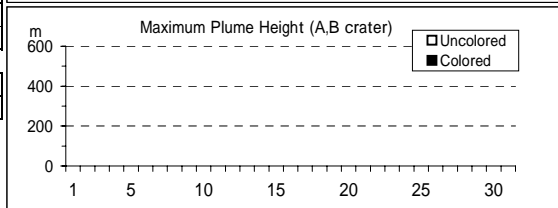
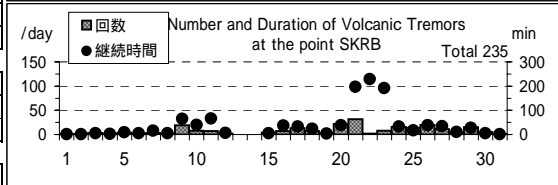
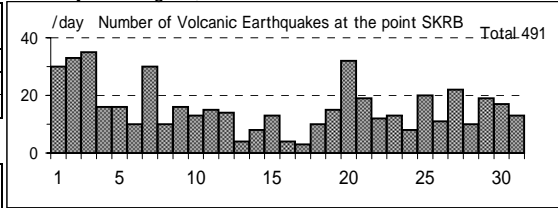
Note: Plumes were from Mt. Minamidake A Crater(A), B Crater(B) and Showa Crater(S)

Note: Uncolored:Plume color was White(W).

Colored:Plume color was Light white(LW), Grayish white(GW), Gray(G) and other.

Visual observation of explosion is described on another sheet.

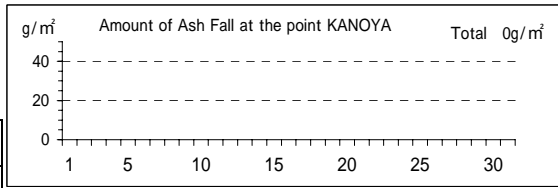
Sakurajima: August,2010



地磁気観測所鹿屋出張所による桜島の日降灰量観測

Extra observation of daily amounts of ash fall from Sakurajima by the Kanoya Satellite Observatory, the Magnetic Observatory, JMA Date: daily (a.m. 0900)

遠望観測(Visual Observation)	月計 total	最大(起日) max (date)
Observation Point: KANOYA		
降灰量(Amount of ash fall) (g/m ²)	0	0



(43)薩摩硫黄島

震動観測(Seismic Observation)

Observation Point: ST11	月計 total	最大(起日) max (date)
火山性地震回数(Number of volcanic earthquakes)	2422	107 (10)
火山性微動回数(Number of volcanic tremors)	-	-
微動継続時間(Duration of volcanic tremors) (min.)	-	-

Note: ST11 (N30°47.3' E130°18.1' H380m)

遠望観測(Visual Observation)

	最大(起日) max (date)
噴煙量(Quantity of plumes) (JMA's scale)	1 (7)
噴煙の高さ(Height of plumes) (m)	30 (7)

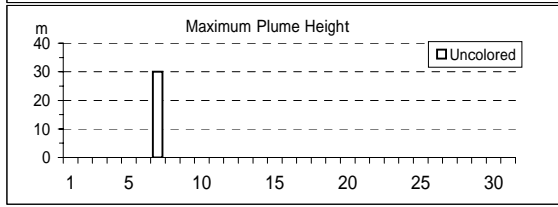
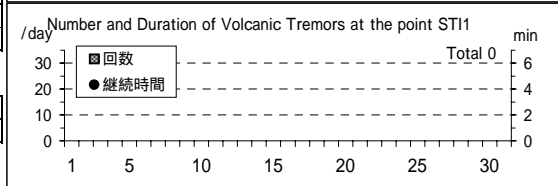
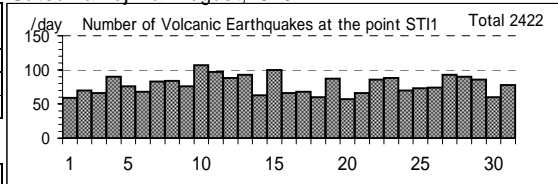
噴煙の色(Color of plumes)	W
他の火山現象(Other volcanic phenomena)	-

Note: Uncolored:Plume color was White(W)*.

Colored:Plume color was Light white(LW), Grayish white(GW), Gray(G) and other.

*Uncolored plumes mean only White(W) color since 1st April, 2010.

Satsuma-Iojima: August,2010



(44)口永良部島

震動観測(Seismic Observation)

Observation Point: KER1	月計 total	最大(起日) max (date)
火山性地震回数(Number of volcanic earthquakes)	16	4 (9)
火山性微動回数(Number of volcanic tremors)	19	2 (abbr.)
微動継続時間(Duration of volcanic tremors) (min.)	16	5 (21)

Note: KER1 (N30°26.9' E130°12.9' H566m)

遠望観測(Visual Observation)

	最大(起日) max (date)
噴煙量(Quantity of plumes) (JMA's scale)	1 (abbr.)
噴煙の高さ(Height of plumes) (m)	300 (8)

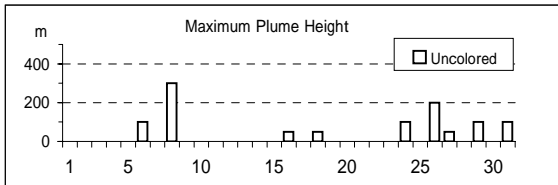
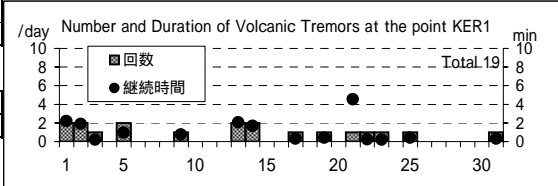
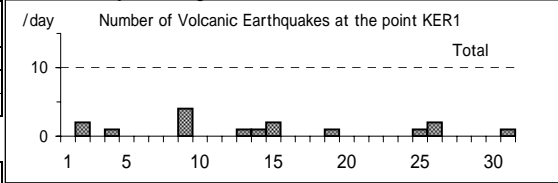
噴煙の色(Color of plumes)	W
他の火山現象(Other volcanic phenomena)	-

Note: Uncolored:Plume color was White(W)*.

Colored:Plume color was Light white(LW), Grayish white(GW), Gray(G) and other.

*Uncolored plumes mean only White(W) color since 1st April, 2010.

Kuchierabujima: August,2010



(45)諏訪之瀬島

震動観測(Seismic Observation)

Observation Point: SWA1	月計 total	最大(起日) max (date)
火山性地震回数(Number of volcanic earthquakes)	228	37 (26)
火山性微動回数(Number of volcanic tremors)	91	16 (5)
微動継続時間(Duration of volcanic tremors) (min.)	706	126 (24)

Note: SWA1 (N29°37.7' E129°42.3' H450m)

* Continuous volcanic tremors occurred intermittently in this month.

Number of volcanic tremors and duration are not including the continuous volcanic tremor.

遠望観測(Visual Observation)

	月計 total	最大(起日) max (date)
爆発回数(Number of explosive eruptions)	11	3 (22)

	最大(起日) max (date)
噴煙量(Quantity of plumes) (JMA's scale)	2 (14)
噴煙の高さ(Height of plumes) (m)	700 (14)

噴煙の色(Color of plumes)	W,GW
他の火山現象(Other volcanic phenomena)	GI

Note: Uncolored:Plume color was White(W)*

Colored:Plume color was Light white(LW), Grayish white(GW), Gray(G) and other.

*Uncolored plumes mean only White(W) color since 1st April, 2010.

Suwanosejima: August,2010

