

# 火山観測 Summary of Observations on Volcanoes

## 連続監視 平成22年(2010年)6月

### Continuous Observation in June,2010

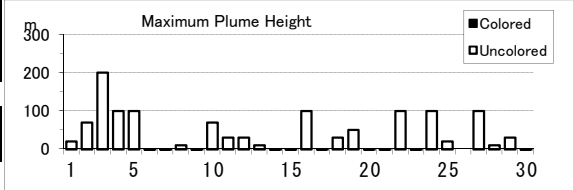
#### (1)アトサヌプリ

遠望観測(Visual Observation)		最大(起日) max (date)
噴煙量(Quantity of plumes) (JMA's scale)		1 (abbr.)
噴煙の高さ(Height of plumes) (m)		200 (3)

噴煙の色(Color of plumes)	W
他の火山現象(Other volcanic phenomena)	-

Note: Plumes were from Upper part of F1 Fumaroles(Location U), Middle part of F1 Fumaroles(M) Lower part of F1 Fumaroles(L) and/or F2 Fumaroles(F)  
 Note: Uncolored:Plume color was White(W).  
 Colored:Plume color was Light white(LW), Grayish white(GW), Gray(G) and other.

#### Atosanupuri: June,2010

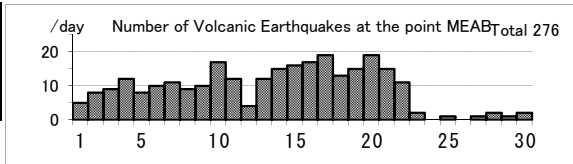


#### (2)雌阿寒岳

震動観測(Seismic Observation)		
Observation Point: MEAB		
	月計 total	最大(起日) max (date)
火山性地震回数(Number of volcanic earthquakes)	276	19 (17,20)
火山性微動回数(Number of volcanic tremors)	-	-
微動継続時間(Duration of volcanic tremors) (min.)	-	-

Note: MEAB (N43°22.8' E143°58.7' H680m)

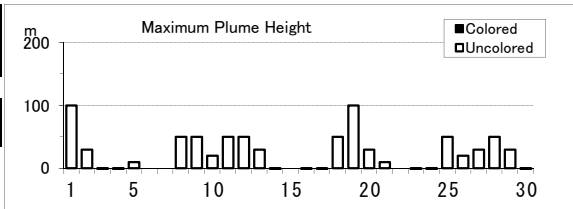
#### Meakandake: June,2010



遠望観測(Visual Observation)		最大(起日) max (date)
噴煙量(Quantity of plumes) (JMA's scale)		1 (abbr.)
噴煙の高さ(Height of plumes) (m)		100 (1,19)

噴煙の色(Color of plumes)	W
他の火山現象(Other volcanic phenomena)	-

Note: Plumes were from the Ponmachineshiri Summit Crater(Location T), the Nakamachineshiri Crater(U), the Akanuma Crater(M) and/or Ponmachineshiri NW Fumaroles(N).  
 Note: Uncolored:Plume color was White(W).  
 Colored:Plume color was Light white(LW), Grayish white(GW), Gray(G) and other.



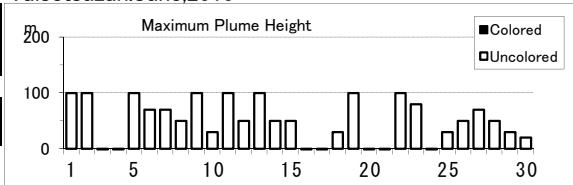
#### (3)大雪山

遠望観測(Visual Observation)		最大(起日) max (date)
噴煙量(Quantity of plumes) (JMA's scale)		1 (abbr.)
噴煙の高さ(Height of plumes) (m)		100 (abbr.)

噴煙の色(Color of plumes)	W
他の火山現象(Other volcanic phenomena)	-

Note: Plumes were from I Fumaroles(Location I)  
 Note: Uncolored:Plume color was White(W).  
 Colored:Plume color was Light white(LW), Grayish white(GW), Gray(G) and other.

#### Taisetsuzan: June,2010

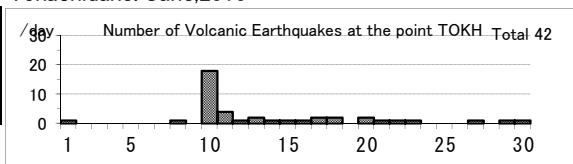


#### (4)十勝岳

震動観測(Seismic Observation)		
Observation Point: TOKH		
	月計 total	最大(起日) max (date)
火山性地震回数(Number of volcanic earthquakes)	42	18 (10)
火山性微動回数(Number of volcanic tremors)	-	-
微動継続時間(Duration of volcanic tremors) (min.)	-	-

Note: TOKH (N43°26.0' E142°40.2' H1,355m)

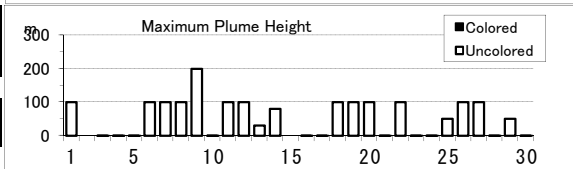
#### Tokachidake: June,2010



遠望観測(Visual Observation)		最大(起日) max (date)
噴煙量(Quantity of plumes) (JMA's scale)		1 (abbr.)
噴煙の高さ(Height of plumes) (m)		200 (9)

噴煙の色(Color of plumes)	W
他の火山現象(Other volcanic phenomena)	-

Note: Plumes were from the Taisho Crater(Location X), the 62 crater Area(P,Q,Y), the Furikozawa Fumaroles (F) and/or the Kyufun Crater (Z).  
 Note: Uncolored:Plume color was White(W).  
 Colored:Plume color was Light white(LW), Grayish white(GW), Gray(G) and other.

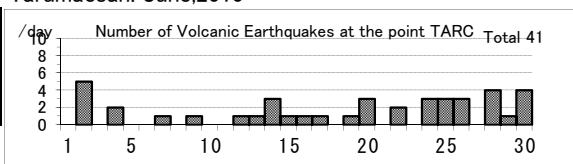


#### (5)樽前山

震動観測(Seismic Observation)		
Observation Point: TARC		
	月計 total	最大(起日) max (date)
火山性地震回数(Number of volcanic earthquakes)	41	5 (2)
火山性微動回数(Number of volcanic tremors)	-	-
微動継続時間(Duration of volcanic tremors) (min.)	-	-

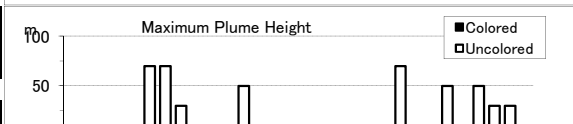
Note: TARC (N42°42.2' E141°22.6' H638m)

#### Tarumaesan: June,2010



遠望観測(Visual Observation)		最大(起日) max (date)
噴煙量(Quantity of plumes) (JMA's scale)		1 (abbr.)
噴煙の高さ(Height of plumes) (m)		70 (6,7,22)

噴煙の色(Color of plumes)	W
-----------------------	---



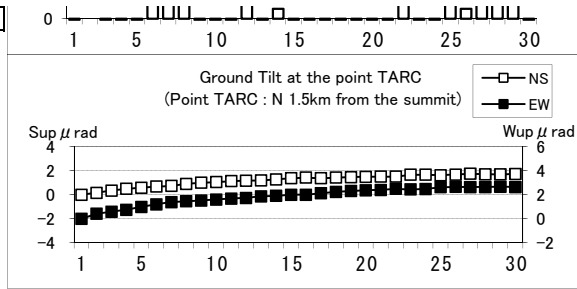
他の火山現象(Other volcanic phenomena)	-
----------------------------------	---

Note: Plumes were from the Summit Area(Location A, B and/or E).

Note: Uncolored:Plume color was White(W).

Colored:Plume color was Light white(LW).

Grayish white(GW), Gray(G) and other.



### (6) 倶多楽

震動観測(Seismic Observation)

	月計 total	最大(起日) max (date)
Observation Point: KNBC		
火山性地震回数(Number of volcanic earthquakes)	-	-
火山性微動回数(Number of volcanic tremors)	-	-
微動継続時間(Duration of volcanic tremors) (min.)	-	-

Note:KNBC (N42°30.1' E141°7.4' H570m)

遠望観測(Visual Observation)

	最大(起日) max (date)
噴煙量(Quantity of plumes) (JMA's scale)	1 (abbr.)
噴煙の高さ(Height of plumes) (m)	50 (3,5,17)

噴煙の色(Color of plumes)	W
他の火山現象(Other volcanic phenomena)	-

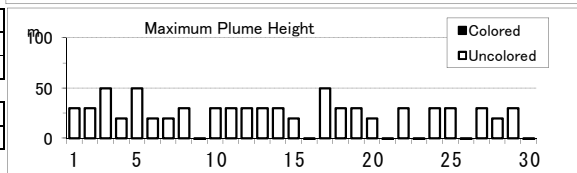
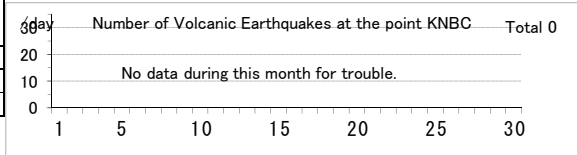
Note: Plumes were from Hiyoriyama Fumarole(Location H)

Note: Uncolored:Plume color was White(W).

Colored:Plume color was Light white(LW).

Grayish white(GW), Gray(G) and other.

### Kuttara: June,2010



(7)有珠山

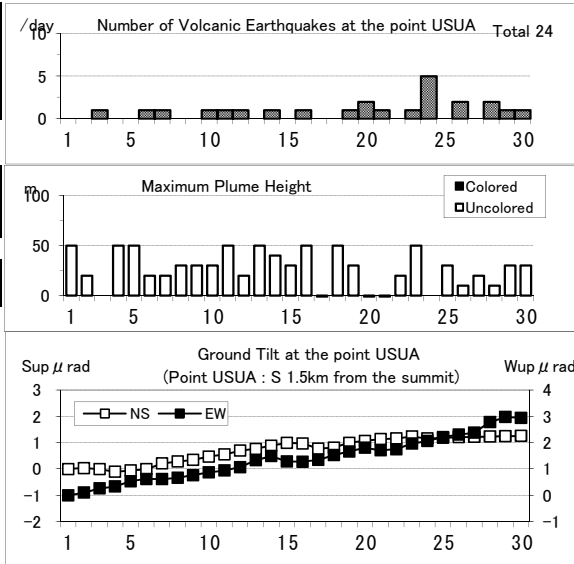
震動観測(Seismic Observation) Observation Point: USUA	月計 total	最大(起日) max (date)
火山性地震回数(Number of volcanic earthquakes)	24	5 (24)
火山性微動回数(Number of volcanic tremors)	-	-
微動継続時間(Duration of volcanic tremors) (min.)	-	-

Note: USUA (N42°31.7' E140°50.2' H246m)

遠望観測(Visual Observation)	最大(起日) max (date)
噴煙量(Quantity of plumes) (JMA's scale)	1 (abbr.)
噴煙の高さ(Height of plumes) (m)	50 (abbr.)
噴煙の色(Color of plumes)	W
他の火山現象(Other volcanic phenomena)	-

Note: Plumes were from the Summit Area of Usuzan(Location P), Mt.showa-shinazan(Z), Nishi-yama vent group(N) and Konpira-yama vent group(K).  
Note: Uncolored:Plume color was White(W).  
Colored:Plume color was Light white(LW), Grayish white(GW), Gray(G) and other.

Usuzan: June,2010



(8)北海道駒ヶ岳

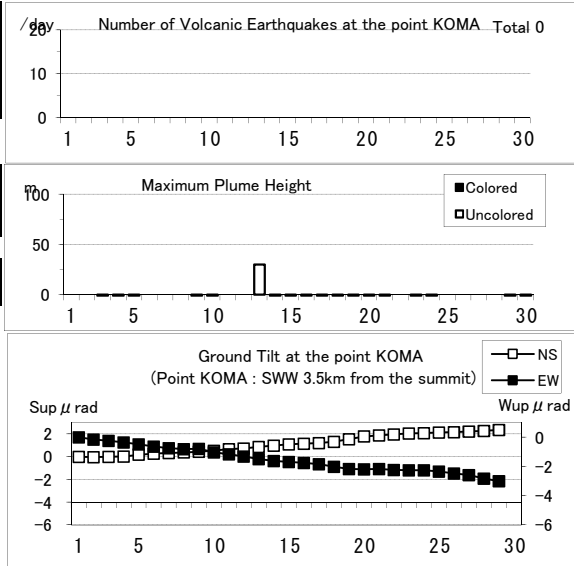
震動観測(Seismic Observation) Observation Point: KOMA	月計 total	最大(起日) max (date)
火山性地震回数(Number of volcanic earthquakes)	-	-
火山性微動回数(Number of volcanic tremors)	-	-
微動継続時間(Duration of volcanic tremors) (min.)	-	-

Note: KOMA (N42°03.2' E140°38.3' H265m)

遠望観測(Visual Observation)	最大(起日) max (date)
噴煙量(Quantity of plumes) (JMA's scale)	1 (13)
噴煙の高さ(Height of plumes) (m)	30 (13)
噴煙の色(Color of plumes)	W
他の火山現象(Other volcanic phenomena)	-

Note: Plumes were from the Showa-4 Crater(Location D1) and/or the 96 South Crater(D2).  
Note: Uncolored:Plume color was White(W).  
Colored:Plume color was Light white(LW), Grayish white(GW), Gray(G) and other.

Hokkaido-Komagatake: June,2010



(9)恵山

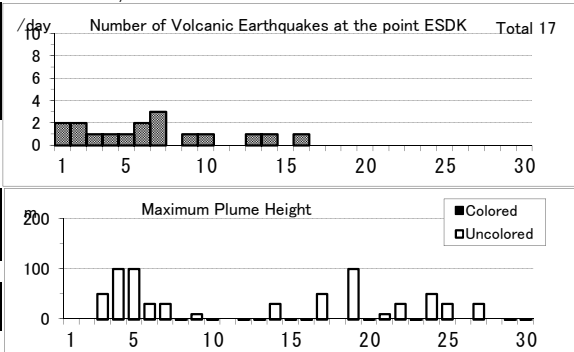
震動観測(Seismic Observation) Observation Point: ESDK	月計 total	最大(起日) max (date)
火山性地震回数(Number of volcanic earthquakes)	17	3 (7)
火山性微動回数(Number of volcanic tremors)	-	-
微動継続時間(Duration of volcanic tremors) (min.)	-	-

Note: ESDK (N41°48.7' E141°9.7' H369m)

遠望観測(Visual Observation)	最大(起日) max (date)
噴煙量(Quantity of plumes) (JMA's scale)	1 (abbr.)
噴煙の高さ(Height of plumes) (m)	100 (4,5,19)
噴煙の色(Color of plumes)	W
他の火山現象(Other volcanic phenomena)	-

Note: Plumes were from X Crater(Location X), Y Crater(Y)  
Note: Uncolored:Plume color was White(W).  
Colored:Plume color was Light white(LW), Grayish white(GW), Gray(G) and other.

Esan: June,2010

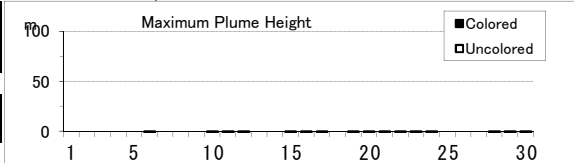


(10)岩木山

遠望観測(Visual Observation)	最大(起日) max (date)
噴煙量(Quantity of plumes) (JMA's scale)	-
噴煙の高さ(Height of plumes) (m)	-
噴煙の色(Color of plumes)	-
他の火山現象(Other volcanic phenomena)	-

Note: Plumes were from Iwaki Summit  
Note: Uncolored:Plume color was White(W).  
Colored:Plume color was Light white(LW), Grayish white(GW), Gray(G) and other.

Iwakisan: June,2010



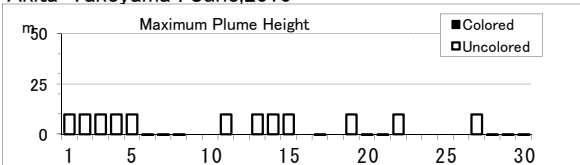
(11)秋田焼山

遠望観測(Visual Observation)	最大(起日) max (date)
噴煙量(Quantity of plumes) (JMA's scale)	1 (abbr.)
噴煙の高さ(Height of plumes) (m)	10 (abbr.)

噴煙の色(Color of plumes)	W
他の火山現象(Other volcanic phenomena)	-

Note: Plumes were from Yakeyama Summit  
 Note: Uncolored:Plume color was White(W).  
 Colored:Plume color was Light white(LW), Grayish white(GW), Gray(G) and other.

Akita-Yakeyama : June,2010



(12)岩手山

震動観測(Seismic Observation)	月計 total	最大(起日) max (date)
Observation Point: IWYK		
火山性地震回数(Number of volcanic earthquakes)	10	2 (20,21)
火山性微動回数(Number of volcanic tremors)	-	-
微動継続時間(Duration of volcanic tremors) (min.)	-	-

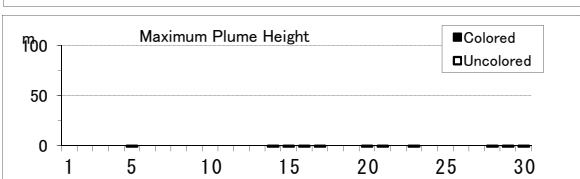
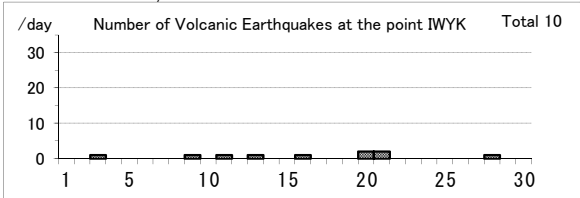
Note:IWYK (N39°52.7' E140°57.6' H763m)

遠望観測(Visual Observation)	最大(起日) max (date)
噴煙量(Quantity of plumes) (JMA's scale)	-
噴煙の高さ(Height of plumes) (m)	-

噴煙の色(Color of plumes)	-
他の火山現象(Other volcanic phenomena)	-

Note: Plumes were from the Kurokurayama Summit(LocationX), the Ojigokudani(Y-6)  
 Note: Uncolored:Plume color was White(W).\*  
 Colored:Plume color was Light white(LW), Grayish white(GW), Gray(G) and other.  
 \*Uncolored plumes mean only White(W) color since 1st April, 2010.

Iwatesan: June,2010



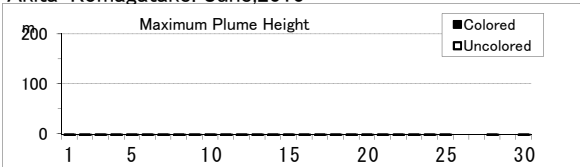
(13)秋田駒ヶ岳

遠望観測(Visual Observation)	最大(起日) max (date)
噴煙量(Quantity of plumes) (JMA's scale)	-
噴煙の高さ(Height of plumes) (m)	-

噴煙の色(Color of plumes)	-
他の火山現象(Other volcanic phenomena)	-

Note: Plumes were from Medake Summit(Location Z-1a), Geothermal area on the N part of Medake Summit(Z-1b), W part of Medake Summit(Z-1c), Geothermal area on the NE slope of Medake Summit(Z-1d) and/or Crater on the E part of Medake Summit(Z-1e)  
 Note: Uncolored:Plume color was White(W).  
 Colored:Plume color was Light white(LW), Grayish white(GW), Gray(G) and other.

Akita-Komagatake: June,2010



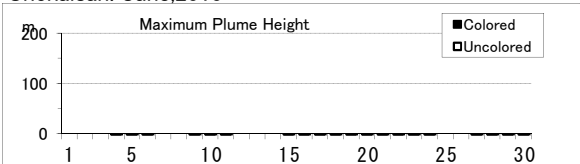
(14)鳥海山

遠望観測(Visual Observation)	最大(起日) max (date)
噴煙量(Quantity of plumes) (JMA's scale)	-
噴煙の高さ(Height of plumes) (m)	-

噴煙の色(Color of plumes)	-
他の火山現象(Other volcanic phenomena)	-

Note: Plumes were from Sin Summit(Location Y)  
 Note: Uncolored:Plume color was White(W).  
 Colored:Plume color was Light white(LW), Grayish white(GW), Gray(G) and other.

Chokaisan: June,2010



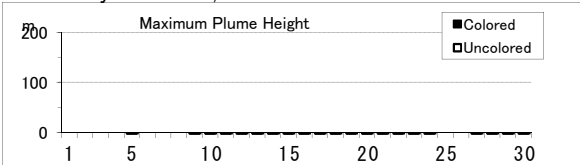
(15)栗駒山

遠望観測(Visual Observation)	最大(起日) max (date)
噴煙量(Quantity of plumes) (JMA's scale)	-
噴煙の高さ(Height of plumes) (m)	-

噴煙の色(Color of plumes)	-
他の火山現象(Other volcanic phenomena)	-

Note: Plumes were from Showa Lake(Location Z-1),Old Crater (W-1)  
 Note: Uncolored:Plume color was White(W).  
 Colored:Plume color was Light white(LW), Grayish white(GW), Gray(G) and other.

Kurikomayama: June,2010



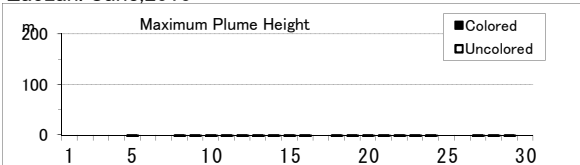
(16)蔵王山

遠望観測(Visual Observation)	最大(起日) max (date)
噴煙量(Quantity of plumes) (JMA's scale)	-
噴煙の高さ(Height of plumes) (m)	-

噴煙の色(Color of plumes)	-
他の火山現象(Other volcanic phenomena)	-

Note: Plumes were from Okama(Location S-1b),Maruyamasawa(Y-2a)  
 Note: Uncolored:Plume color was White(W).  
 Colored:Plume color was Light white(LW), Grayish white(GW), Gray(G) and other.

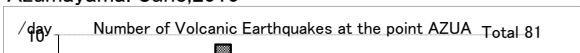
Zaozan: June,2010



(17)吾妻山

震動観測(Seismic Observation)	月計 total	最大(起日) max (date)
Observation Point: AZUA		

Azumayama: June,2010



火山性地震回数(Number of volcanic earthquakes)	81	9 (11)
火山性微動回数(Number of volcanic tremors)	-	-
微動継続時間(Duration of volcanic tremors) (min.)	-	-

Note: AZUA (N37°43.3' E140°16.5' H1,295m)

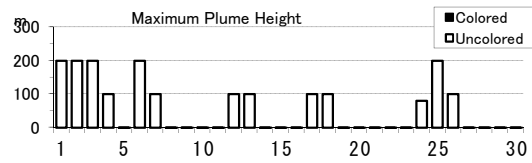
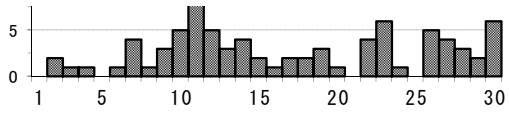
遠望観測(Visual Observation)	最大(起日) max (date)
噴煙量(Quantity of plumes) (JMA's scale)	1 (abbr.)
噴煙の高さ(Height of plumes) (m)	200 (abbr.)

噴煙の色(Color of plumes)	W
他の火山現象(Other volcanic phenomena)	-

Note: Plumes were from the Oana Crater

Note: Uncolored:Plume color was White(W).

Colored:Plume color was Light white(LW), Grayish white(GW), Gray(G) and other.



### (18)安達太良山

震動観測(Seismic Observation)

	月計 total	最大(起日) max (date)
火山性地震回数(Number of volcanic earthquakes)	5	2 (5)
火山性微動回数(Number of volcanic tremors)	-	-
微動継続時間(Duration of volcanic tremors) (min.)	-	-

Note: ADTB(N37° 38.1' E140° 18.2' H1,320m)

遠望観測(Visual Observation)

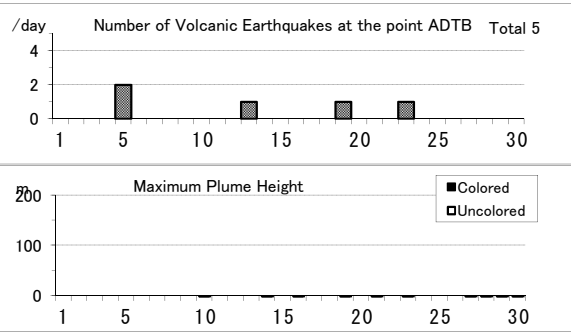
	最大(起日) max (date)
噴煙量(Quantity of plumes) (JMA's scale)	-
噴煙の高さ(Height of plumes) (m)	-
噴煙の色(Color of plumes)	-
他の火山現象(Other volcanic phenomena)	-

Note: Plumes were from the Numanodaira - SW area.

Note: Uncolored:Plume color was White(W).

Colored:Plume color was Light white(LW), Grayish white(GW), Gray(G) and other.

### Adatarayama: June,2010



### (19)磐梯山

震動観測(Seismic Observation)

	月計 total	最大(起日) max (date)
火山性地震回数(Number of volcanic earthquakes)	13	3 (18)
火山性微動回数(Number of volcanic tremors)	-	-
微動継続時間(Duration of volcanic tremors) (min.)	-	-

Note: BNDAN37° 35.0' E140° 04.8' H1000m)

遠望観測(Visual Observation)

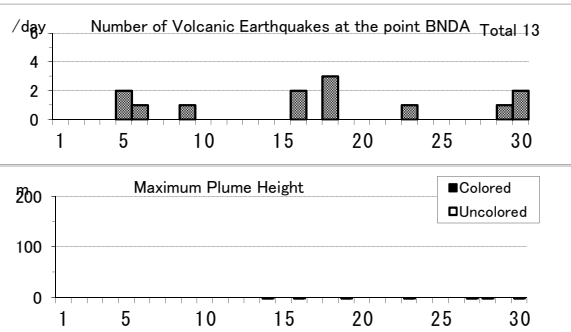
	最大(起日) max (date)
噴煙量(Quantity of plumes) (JMA's scale)	-
噴煙の高さ(Height of plumes) (m)	-
噴煙の色(Color of plumes)	-
他の火山現象(Other volcanic phenomena)	-

Note: Plumes were from the Fumarolic area in Crater wall.

Note: Uncolored:Plume color was White(W).

Colored:Plume color was Light white(LW), Grayish white(GW), Gray(G) and other.

### Bandaisan: June,2010



### (20)那須岳

震動観測(Seismic Observation)

	月計 total	最大(起日) max (date)
火山性地震回数(Number of volcanic earthquakes)	12	8 (15)
火山性微動回数(Number of volcanic tremors)	-	-
微動継続時間(Duration of volcanic tremors) (min.)	-	-

Note: NSUA (N37°06.2' E139°59.6' H1,083m)

遠望観測(Visual Observation)

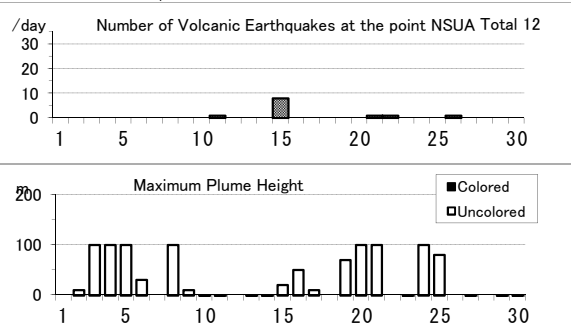
	最大(起日) max (date)
噴煙量(Quantity of plumes) (JMA's scale)	1 (abbr.)
噴煙の高さ(Height of plumes) (m)	100 (abbr.)
噴煙の色(Color of plumes)	W
他の火山現象(Other volcanic phenomena)	-

Note: Plumes were from the west flank of Mt. Nasudake.

Note: Uncolored:Plume color was White(W).

Colored:Plume color was Light white(LW), Grayish white(GW), Gray(G) and other.

### Nasudake: June,2010



### (21)日光白根山

遠望観測(Visual Observation)

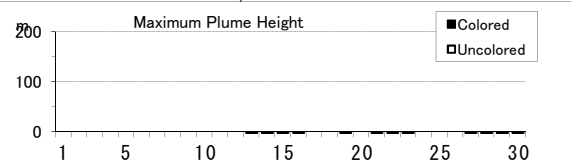
	最大(起日) max (date)
噴煙量(Quantity of plumes) (JMA's scale)	-
噴煙の高さ(Height of plumes) (m)	-
噴煙の色(Color of plumes)	-
他の火山現象(Other volcanic phenomena)	-

Note: Plumes were from Summit Area of Nikko-Shiranesan(Location A)

Note: Uncolored:Plume color was White(W).

Colored:Plume color was Light white(LW), Grayish white(GW), Gray(G) and other.

### Nikko-Shiranesan: June,2010



### (22)草津白根山

震動観測(Seismic Observation)

	月計 total	最大(起日) max (date)
火山性地震回数(Number of volcanic earthquakes)	33	15 (20)
火山性微動回数(Number of volcanic tremors)	-	-
微動継続時間(Duration of volcanic tremors) (min.)	-	-

Note: KSHA (N36°38.9' E138°32.7' H1,933m)

遠望観測(Visual Observation)

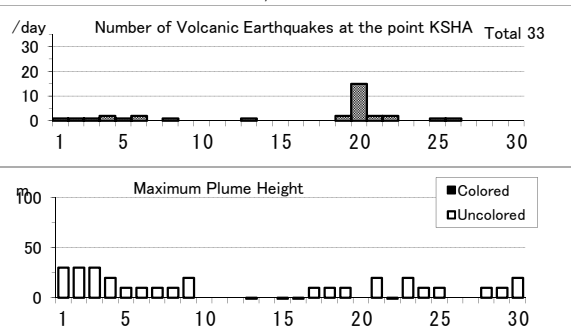
	最大(起日) max (date)
噴煙量(Quantity of plumes) (JMA's scale)	1 (abbr.)
噴煙の高さ(Height of plumes) (m)	30 (1,2,3)
噴煙の色(Color of plumes)	W
他の火山現象(Other volcanic phenomena)	-

Note: Plumes were from the Yugama Crater and Fumaroles at northern side of Yugama Crater

Note: Uncolored:Plume color was White(W).

Colored:Plume color was Light white(LW), Grayish white(GW), Gray(G) and other.

### Kusatsu-Shiranesan: June,2010





(23)浅間山

震動観測(Seismic Observation)

Table with 3 columns: Observation Point: ASMB, 月計 total, 最大(起日) max (date). Rows include volcanic earthquakes (209 total, 16 max), tremors, and duration.

Note: ASMB (N36°23.4' E138°31.1' H1,864m)

遠望観測(Visual Observation)

Table with 2 columns: 最大(起日) max (date). Rows include quantity of plumes (2) and height (300m).

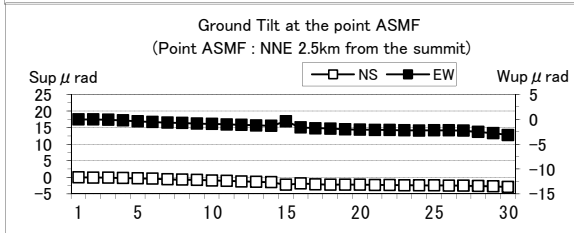
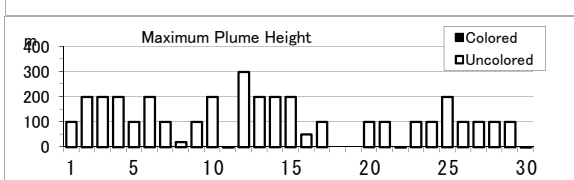
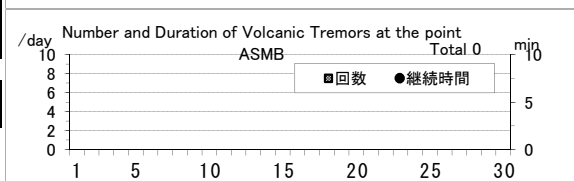
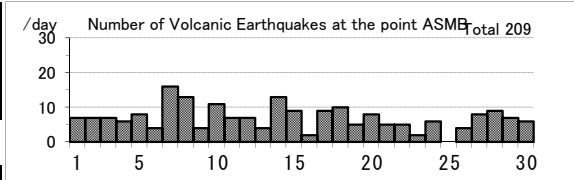
Table with 2 columns: 噴煙の色(Color of plumes) W, 他の火山現象(Other volcanic phenomena) -

Note: Plumes were from the Kamayama Crater(Location A).

Note: Uncolored:Plume color was White(W).

Colored:Plume color was Light white(LW), Grayish white(GW), Gray(G) and other.

Asamayama: June,2010



(24)新潟焼山

震動観測(Seismic Observation)

Table with 3 columns: Observation Point: NYOD, 月計 total, 最大(起日) max (date). Rows include volcanic earthquakes, tremors, and duration.

Note: NYOD (N36°57.4' E138°2.3' H1,150m)

遠望観測(Visual Observation)

Table with 2 columns: 最大(起日) max (date). Rows include quantity of plumes (1) and height (30m).

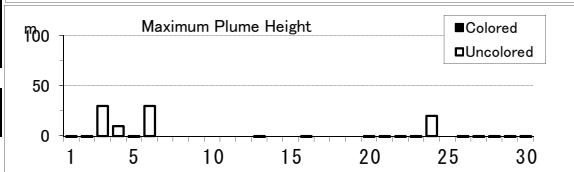
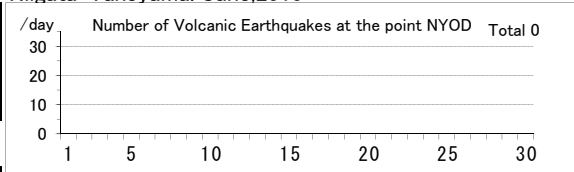
Table with 2 columns: 噴煙の色(Color of plumes) W, 他の火山現象(Other volcanic phenomena) -

Note: Plumes were from Upper East flank(Location A).

Note: Uncolored:Plume color was White(W).

Colored:Plume color was Light white(LW), Grayish white(GW), Gray(G) and other.

Niigata-Yakeyama: June,2010



(25)乗鞍岳

遠望観測(Visual Observation)

Table with 2 columns: 最大(起日) max (date). Rows include quantity of plumes and height.

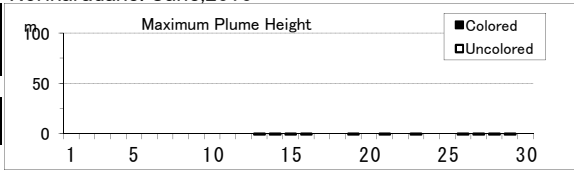
Table with 2 columns: 噴煙の色(Color of plumes) -, 他の火山現象(Other volcanic phenomena) -

Note: Plumes were from Summit Crater(Location A).

Note: Uncolored:Plume color was White(W).

Colored:Plume color was Light white(LW), Grayish white(GW), Gray(G) and other.

Norikuradake: June,2010



(26)御嶽山

震動観測(Seismic Observation)

Table with 3 columns: Observation Point: ONTA, 月計 total, 最大(起日) max (date). Rows include volcanic earthquakes (1 total, 1 max), tremors, and duration.

Note: ONTA (N35°52.6' E137°29.7' H2,228m)

遠望観測(Visual Observation)

Table with 2 columns: 最大(起日) max (date). Rows include quantity of plumes (1) and height (100m).

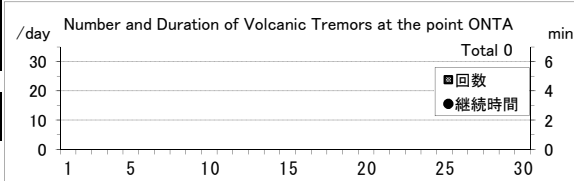
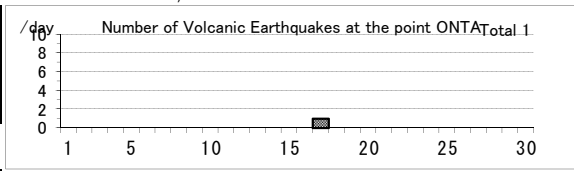
Table with 2 columns: 噴煙の色(Color of plumes) W, 他の火山現象(Other volcanic phenomena) -

Note: Plumes were from the Otaki summit Crater (A) and/or S6

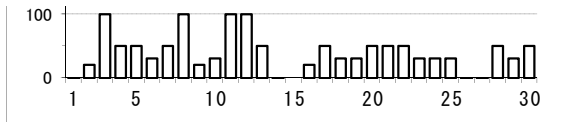
Note: Uncolored:Plume color was White(W).

Colored:Plume color was Light white(LW), Grayish white(GW), Gray(G) and other.

Ontakesan: June,2010







### (27) 白山

震動観測(Seismic Observation)

Observation Point: HSMD	月計 total	最大(起日) max (date)
火山性地震回数(Number of volcanic earthquakes)	33	21 (29)
火山性微動回数(Number of volcanic tremors)	-	-
微動継続時間(Duration of volcanic tremors) (min.)	-	-

Note: HSMD (N36°8.8' E136°45.9' H2,345m)

遠望観測(Visual Observation)

	最大(起日) max (date)
噴煙量(Quantity of plumes) (JMA's scale)	-
噴煙の高さ(Height of plumes) (m)	-

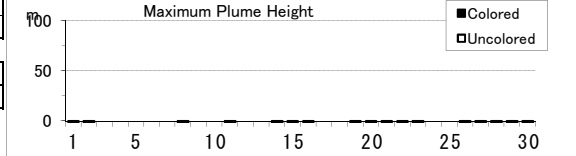
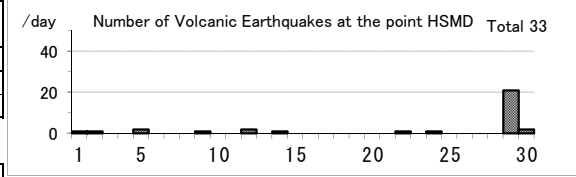
噴煙の色(Color of plumes)	-
他の火山現象(Other volcanic phenomena)	-

Note: Plumes were from Summit Area of Hakusan(Location A)

Note: Uncolored:Plume color was White(W).

Colored:Plume color was Light white(LW), Grayish white(GW), Gray(G) and other.

### Hakusan: June,2010



### (28) 富士山

震動観測(Seismic Observation)

Observation Point: FUJ2	月計 total	最大(起日) max (date)
火山性地震回数(Number of volcanic earthquakes)	9	2 (8,18,20)
火山性微動回数(Number of volcanic tremors)	-	-
微動継続時間(Duration of volcanic tremors) (min.)	-	-

Note: FUJ2 (N35°21.6' E138°43.6' H3,772m)

遠望観測(Visual Observation)

	最大(起日) max (date)
噴煙量(Quantity of plumes) (JMA's scale)	-
噴煙の高さ(Height of plumes) (m)	-

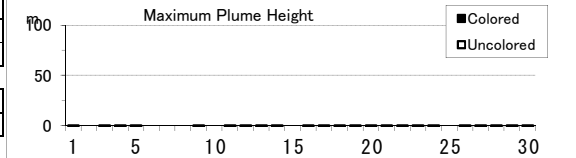
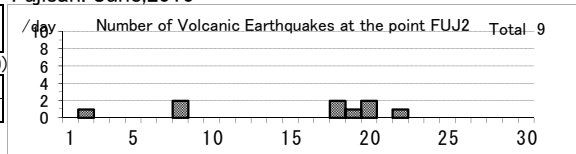
噴煙の色(Color of plumes)	-
他の火山現象(Other volcanic phenomena)	-

Note: Plumes were from Summit Crater(LocationA),Hoei Crater(B)

Note: Uncolored:Plume color was White(W).

Colored:Plume color was Light white(LW), Grayish white(GW), Gray(G) and other.

### Fujisan: June,2010



### (29) 箱根山

遠望観測(Visual Observation)

	最大(起日) max (date)
噴煙量(Quantity of plumes) (JMA's scale)	1 (abbr.)
噴煙の高さ(Height of plumes) (m)	100 (1,13)

噴煙の色(Color of plumes)	W
他の火山現象(Other volcanic phenomena)	-

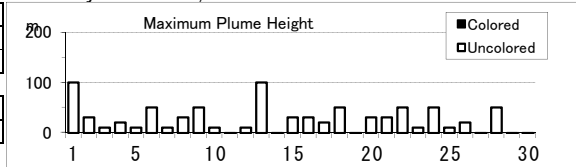
Note: Plumes were from Fumaroles near Owakudani(Location A),

Fumaroles near Soujigoku(B)

Note: Uncolored:Plume color was White(W).

Colored:Plume color was Light white(LW), Grayish white(GW), Gray(G) and other.

### Hakoneyama: June,2010



### (30) 伊豆東部火山群

震動観測(Seismic Observation)

Observation Point: ITBA,Kamata2	月計 total	最大(起日) max (date)
火山性地震回数(Number of volcanic earthquakes)	20	5 (11)
火山性微動回数(Number of volcanic tremors)	0	0
微動継続時間(Duration of volcanic tremors) (min.)	-	-

Note: ITBA (N35°00.5' E139°05.9' H12m)

Kamata2(N34°55.71' E139°03.65' H175m)

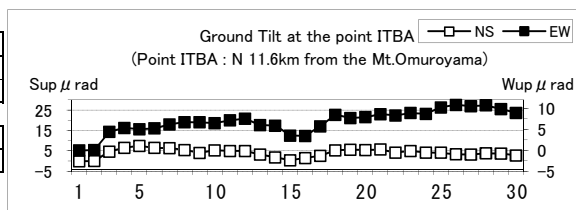
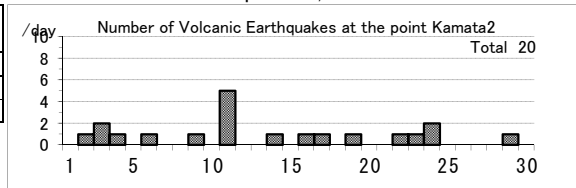
\*The observational data at Izu-Tobu Volcanoes are shown as the one of Kamata station in the chapter1.3 ( Data of earthquake; Table 3).

遠望観測(Visual Observation)

	最大(起日) max (date)
噴煙量(Quantity of plumes) (JMA's scale)	-
噴煙の高さ(Height of plumes) (m)	-

噴煙の色(Color of plumes)	-
他の火山現象(Other volcanic phenomena)	-

### Izu-Tobu Volcano Group: June,2010



(31)伊豆大島

震動観測(Seismic Observation)	月計 total	最大(起日) max (date)
Observation Point: OSMA		
火山性地震回数(Number of volcanic earthquakes)	43	5 (8)
火山性微動回数(Number of volcanic tremors)	-	-
微動継続時間(Duration of volcanic tremors) (min.)	-	-

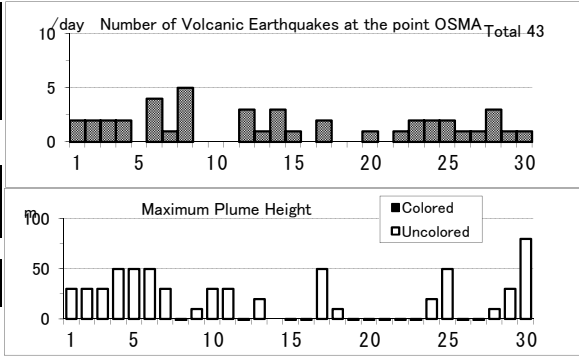
Note: OSMA (N34°44.2' E139°23.2' H553m)

遠望観測(Visual Observation)	最大(起日) max (date)
噴煙量(Quantity of plumes) (JMA's scale)	1 (abbr.)
噴煙の高さ(Height of plumes) (m)	80 (30)
噴煙の色(Color of plumes)	W
他の火山現象(Other volcanic phenomena)	-

Note:Plumes were from the Miharayama Summit Crater(Location A), the Fumaroles at western side of Miharashinzan(A1), the Fumaroles near Kengamine(A2), the Fumaroles at eastern side of Miharashinzan(A3)

Note: Uncolored:Plume color was White(W). Colored:Plume color was Light white(LW), Grayish white(GW), Gray(G) and other.

Izu-Oshima: June,2010



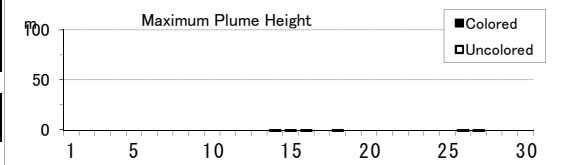
(32)新島

遠望観測(Visual Observation)	最大(起日) max (date)
噴煙量(Quantity of plumes) (JMA's scale)	-
噴煙の高さ(Height of plumes) (m)	-
噴煙の色(Color of plumes)	-
他の火山現象(Other volcanic phenomena)	-

Note: Plumes were from Summit Area of Tangoyama(Location A)

Note: Uncolored:Plume color was White(W). Colored:Plume color was Light white(LW), Grayish white(GW), Gray(G) and other.

Niijima: June,2010



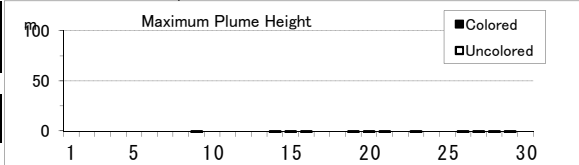
(33)神津島

遠望観測(Visual Observation)	最大(起日) max (date)
噴煙量(Quantity of plumes) (JMA's scale)	-
噴煙の高さ(Height of plumes) (m)	-
噴煙の色(Color of plumes)	-
他の火山現象(Other volcanic phenomena)	-

Note: Plumes were from Summit Area of Tenjosan(Location A)

Note: Uncolored:Plume color was White(W). Colored:Plume color was Light white(LW), Grayish white(GW), Gray(G) and other.

Kozushima: June,2010

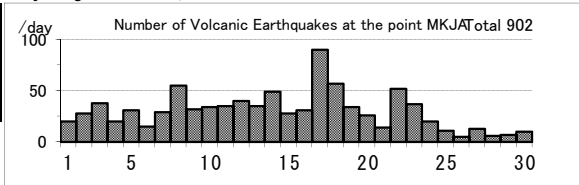


(34)三宅島

震動観測(Seismic Observation)	月計 total	最大(起日) max (date)
Observation Point: MKJA		
火山性地震回数(Number of volcanic earthquakes)	902	90 (17)
火山性微動回数(Number of volcanic tremors)	-	-
微動継続時間(Duration of volcanic tremors) (min.)	-	-

Note: MKJA (N34°05.9' E139°32.0' H527m)

Miyakejima: June,2010



遠望観測(Visual Observation)	最大(起日) max (date)
噴煙量(Quantity of plumes) (JMA's scale)	2 (5)
噴煙の高さ(Height of plumes) (m)	200 (abbr.)
噴煙の色(Color of plumes)	W
他の火山現象(Other volcanic phenomena)	-

Note: Plumes were from the Summit Crater.

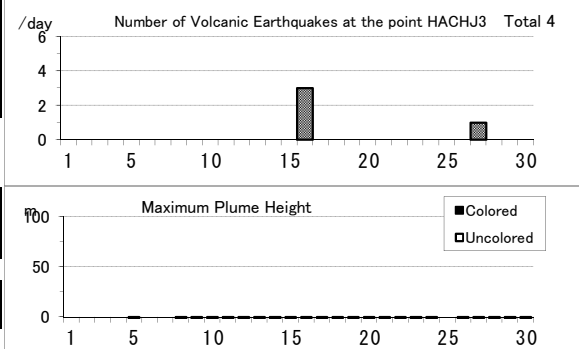
Note: Uncolored:Plume color was White(W). Colored:Plume color was Light white(LW), Grayish white(GW), Gray(G) and other.

(35)八丈島

震動観測(Seismic Observation)	月計 total	最大(起日) max (date)
Observation Point: HACHJ3		
火山性地震回数(Number of volcanic earthquakes)	4	3 (16)
火山性微動回数(Number of volcanic tremors)	-	-
微動継続時間(Duration of volcanic tremors) (min.)	-	-

Note: HACHJ3 (N33°06.92' E139°48.83' H70m)

Hachijojima: June,2010



遠望観測(Visual Observation)	最大(起日) max (date)
噴煙量(Quantity of plumes) (JMA's scale)	-
噴煙の高さ(Height of plumes) (m)	-
噴煙の色(Color of plumes)	-
他の火山現象(Other volcanic phenomena)	-

Note: Plumes were from Nishiyama Crater(Location A)

Note: Uncolored:Plume color was White(W). Colored:Plume color was Light white(LW), Grayish white(GW), Gray(G) and other.

(36)青ヶ島

遠望観測(Visual Observation)

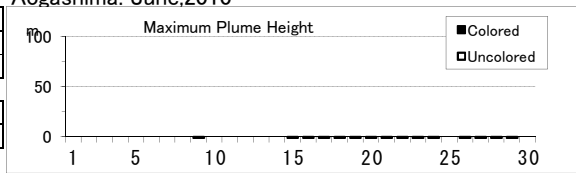
	最大(起日) max (date)
噴煙量(Quantity of plumes) (JMA's scale)	-
噴煙の高さ(Height of plumes) (m)	-
噴煙の色(Color of plumes)	-
他の火山現象(Other volcanic phenomena)	-

Note: Plumes were from Western flank of Maruyama(Location A)

Note: Uncolored:Plume color was White(W).

Colored:Plume color was Light white(LW), Grayish white(GW), Gray(G) and other.

Aogashima: June,2010



(37)九重山

震動観測(Seismic Observation)

Observation Point: KJUA	月計 total	最大(起日) max (date)
火山性地震回数(Number of volcanic earthquakes)	9	4 (13)
火山性微動回数(Number of volcanic tremors)	-	-
微動継続時間(Duration of volcanic tremors) (min.)	-	-

Note: KJUA (N33°06.2' E131°13.7' H1,280m)

遠望観測(Visual Observation)

	最大(起日) max (date)
噴煙量(Quantity of plumes) (JMA's scale)	1 (abbr.)
噴煙の高さ(Height of plumes) (m)	200 (abbr.)

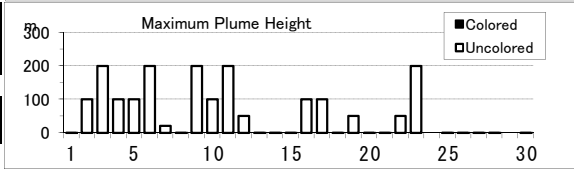
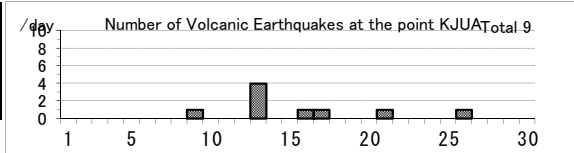
噴煙の色(Color of plumes)	W
他の火山現象(Other volcanic phenomena)	-

Note: Plumes were from the east and/or north-east flank of Mt. Hossho (Location A,B,C or D).

Note: Uncolored:Plume color was White(W).

Colored:Plume color was Light white(LW), Grayish white(GW), Gray(G) and other.

Kujusan: June,2010



(38)阿蘇山

震動観測(Seismic Observation)

Observation Point: ASOA	月計 total	最大(起日) max (date)
火山性地震回数(Number of volcanic earthquakes)	58	10 (6)
孤立型火山性微動回数 (Number of isolated volcanic tremors)	7746	324 (20)

Note: ASOA (N32°53.1' E131°04.7' H1,163m)

遠望観測(Visual Observation)

	最大(起日) max (date)
噴煙量(Quantity of plumes) (JMA's scale)	2 (abbr.)
噴煙の高さ(Height of plumes) (m)	600 (9.17)

噴煙の色(Color of plumes)	W
他の火山現象(Other volcanic phenomena)	-

Note: Plumes were from the Crater No.1 of Mt. Nakadake.

Note: Uncolored:Plume color was White(W).

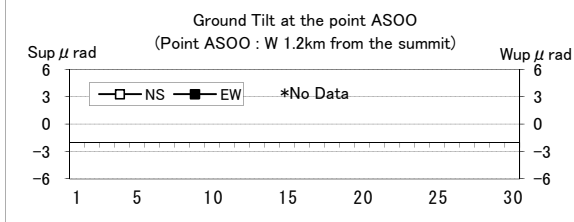
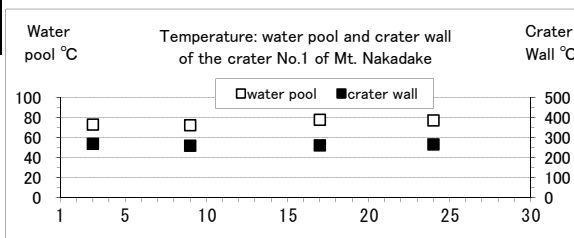
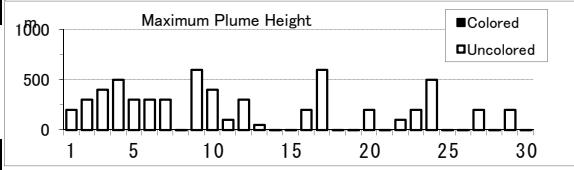
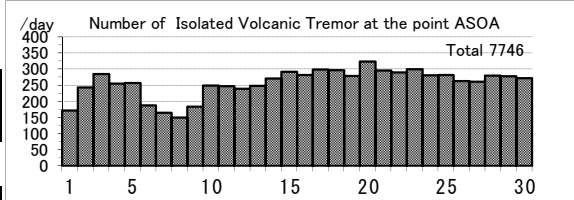
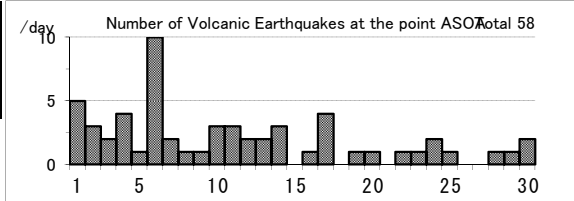
Colored:Plume color was Light white(LW), Grayish white(GW), Gray(G) and other.

現地観測(Field Observation)

	最高(起日) max (date)	最低(起日) min (date)
火口内の湯だまりの表面温度 (Surface temperature on the water pool in the crater) (°C)	78 (17)	73 (9)
火口壁の表面温度 (Surface temperature on the crater wall) (°C)	270 (3)	261 (9)

Observation Point:the Crater No.1 of Mt. Nakadake

Asosan: June,2010



(39)雲仙岳

震動観測(Seismic Observation)

Observation Point: UNZA	月計 total	最大(起日) max (date)
火山性地震回数(Number of volcanic earthquakes)	10	6 (7)
火山性微動回数(Number of volcanic tremors)	-	-
微動継続時間(Duration of volcanic tremors) (min)	-	-

Note: UNZA (N32°44.1' E130°16.1' H769m)

遠望観測(Visual Observation)

	最大(起日) max (date)
噴煙量(Quantity of plumes) (JMA's scale)	1 (abbr.)
噴煙の高さ(Height of plumes) (m)	20 (17)

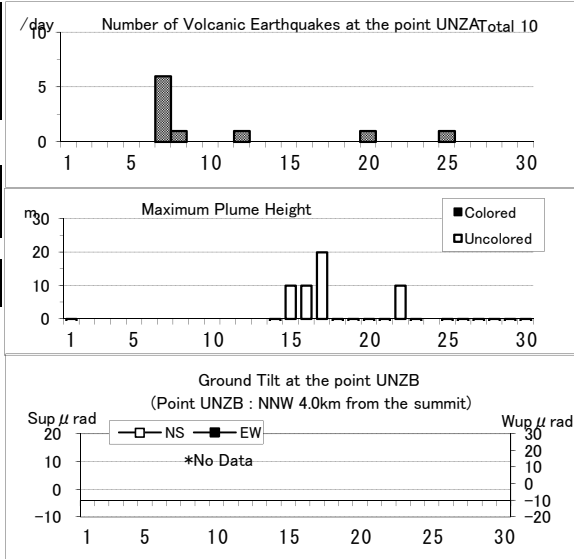
噴煙の色(Color of plumes)	W
他の火山現象(Other volcanic phenomena)	-

Note: Plumes were from the 10th Lava Dome(Location A10) and/or the 11th Lava Dome(A11).

Note: Uncolored:Plume color was White(W).

Colored:Plume color was Light white(LW), Grayish white(GW), Gray(G) and other.

Unzendake: June,2010



(40)霧島山

新燃岳 (Shinmoedake)

震動観測(Seismic Observation)

Observation Point: KIRA	月計 total	最大(起日) max (date)
火山性地震回数(Number of volcanic earthquakes)	256	63 (28)
火山性微動回数(Number of volcanic tremors)	6	4 (27)
微動継続時間(Duration of volcanic tremors) (min)	276	247 (27)

Note: KIRA (N31°54.0' E130°52.3' H1,035m)

遠望観測(Visual Observation)

	最大(起日) max (date)
噴煙量(Quantity of plumes) (JMA's scale)	1 (10,16)
噴煙の高さ(Height of plumes) (m)	50 (10,16)

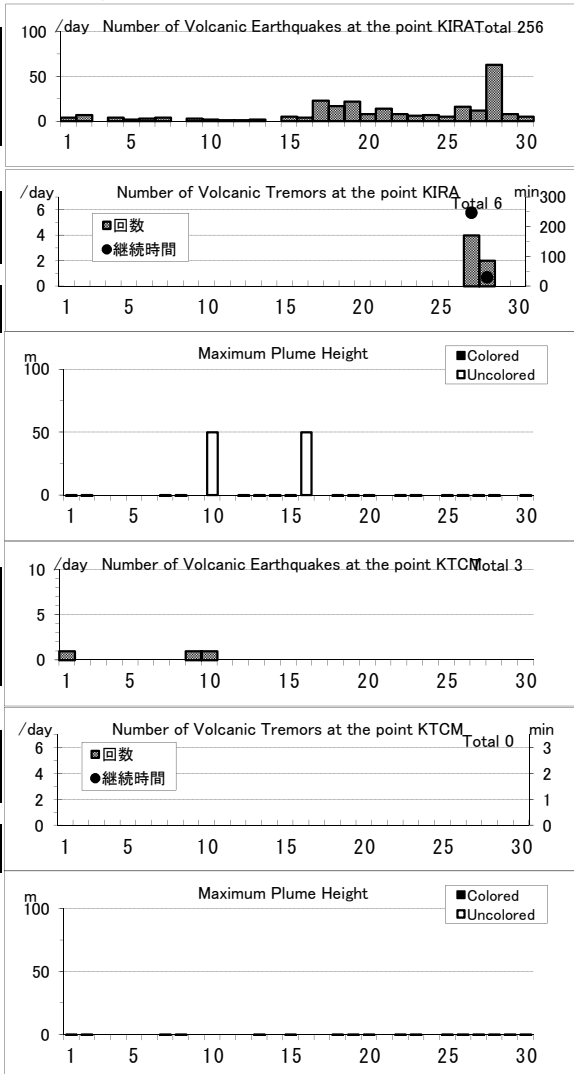
噴煙の色(Color of plumes)	-
他の火山現象(Other volcanic phenomena)	-

Note: Plumes were from the Shinmoedake Crater

Note: Uncolored:Plume color was White(W).

Colored:Plume color was Light white(LW), Grayish white(GW), Gray(G) and other.

Kirishimayama: June,2010



御鉢(Ohachi)

震動観測(Seismic Observation)

Observation Point: KTCM	月計 total	最大(起日) max (date)
火山性地震回数(Number of volcanic earthquakes)	3	1 (1,9,10)
火山性微動回数(Number of volcanic tremors)	-	-
微動継続時間(Duration of volcanic tremors) (min)	-	-

Note: KTCM (N31°53.2' E130°55.2' H1,549m)

遠望観測(Visual Observation)

	最大(起日) max (date)
噴煙量(Quantity of plumes) (JMA's scale)	-
噴煙の高さ(Height of plumes) (m)	-

噴煙の色(Color of plumes)	-
他の火山現象(Other volcanic phenomena)	-

Note: Plumes were from the Ohachi Crater

Note: Uncolored:Plume color was White(W).

Colored:Plume color was Light white(LW), Grayish white(GW), Gray(G) and other.

(41)桜島

震動観測(Seismic Observation) Observation Point: SKRB	月計 total	最大(起日) max (date)
火山性地震回数(Number of volcanic earthquakes)	741	50 (24)
火山性微動回数(Number of volcanic tremors)	250	47 (14)
微動継続時間(Duration of volcanic tremors) (min)	1599	447 (13)

Note: SKRB (N31°35.6' E130°38.4' H455m)

遠望観測(Visual Observation)	月計 total	最大(起日) max (date)
爆発回数(Number of explosive eruptions)	99	10 (25)
降灰量(Amount of ash fall) (g/m <sup>2</sup> )	310	283 (4)

A,B火口 (A,B crater)	最大(起日) max (date)
噴煙量(Quantity of plumes) (JMA's scale)	2 (17)
噴煙の高さ(Height of plumes) (m)	400 (17)

昭和火口 (Showa crater)	最大(起日) max (date)
噴煙量(Quantity of plumes) (JMA's scale)	3 (abbr.)
噴煙の高さ(Height of plumes) (m)	1800 (2)

噴煙の色(Color of plumes)	W,LW,GW
他の火山現象(Other volcanic phenomena)	Gl,As,Bm,Af

Note: Plumes were from Mt. Minamidake A Crater(A), B Crater(B) and Showa Crater(S)

Note: Uncolored:Plume color was White(W).  
Colored:Plume color was Light white(LW), Grayish white(GW), Gray(G) and other.

Visual observation of explosion is described on another sheet.

地磁気観測所鹿屋出張所による桜島の日降灰量観測

Extra observation of daily amounts of ash fall from Sakurajima by the Kanoya Satellite Observatory, the Magnetic Observatory, JMA  
Date: daily (a.m. 0900)

遠望観測(Visual Observation) Observation Point: KANOYA	月計 total	最大(起日) max (date)
降灰量(Amount of ash fall) (g/m <sup>2</sup> )	0	0

(42)薩摩硫黄島

震動観測(Seismic Observation) Observation Point: STI1	月計 total	最大(起日) max (date)
火山性地震回数(Number of volcanic earthquakes)	1695	87 (20)
火山性微動回数(Number of volcanic tremors)	-	-
微動継続時間(Duration of volcanic tremors) (min.)	-	-

Note: STI1 (N30°47.3' E130°18.1' H380m)

遠望観測(Visual Observation)	最大(起日) max (date)
噴煙量(Quantity of plumes) (JMA's scale)	1 (abbr.)
噴煙の高さ(Height of plumes) (m)	100 (10,23,30)

噴煙の色(Color of plumes)	W
他の火山現象(Other volcanic phenomena)	-

Note: Uncolored:Plume color was White(W)\*.  
Colored:Plume color was Light white(LW), Grayish white(GW), Gray(G) and other.

\*Uncolored plumes mean only White(W) color since 1st April, 2010.

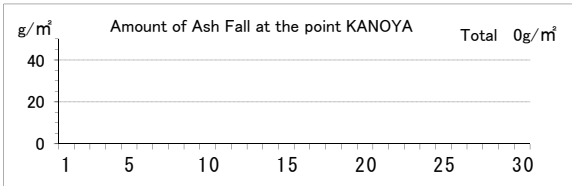
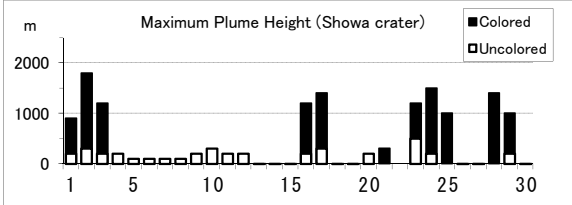
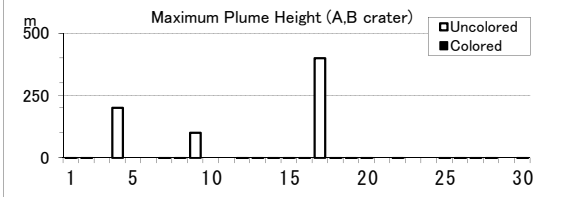
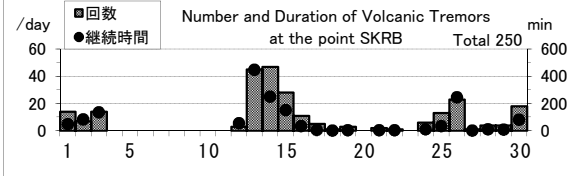
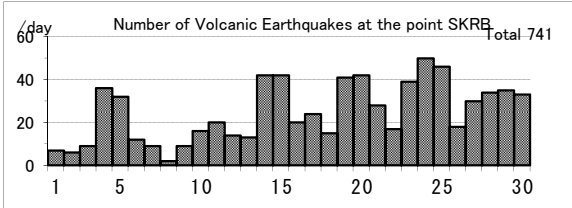
(43)口永良部島

震動観測(Seismic Observation) Observation Point: KER1	月計 total	最大(起日) max (date)
火山性地震回数(Number of volcanic earthquakes)	17	7 (8)
火山性微動回数(Number of volcanic tremors)	15	2 (4,18,24)
微動継続時間(Duration of volcanic tremors) (min.)	13	2 (8)

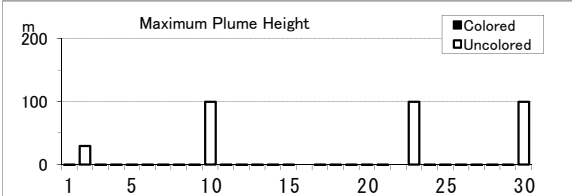
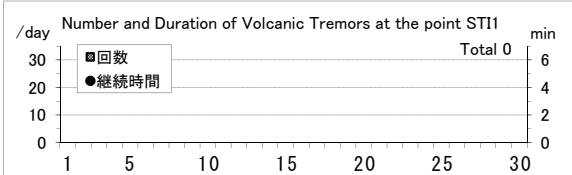
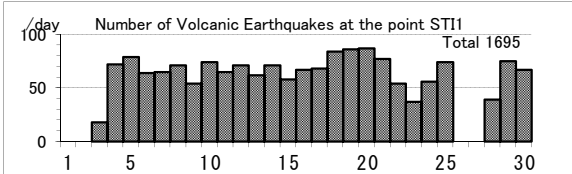
Note: KER1 (N30°26.9' E130°12.9' H566m)

遠望観測(Visual Observation)	最大(起日) max (date)
噴煙量(Quantity of plumes) (JMA's scale)	1 (abbr.)
噴煙の高さ(Height of plumes) (m)	200 (24,30)

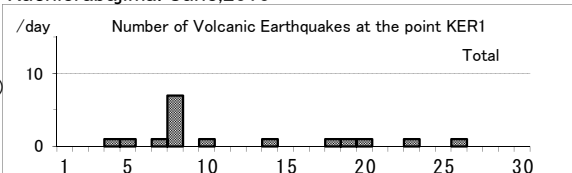
Sakurajima: June,2010



Satsuma-Iojima: June,2010



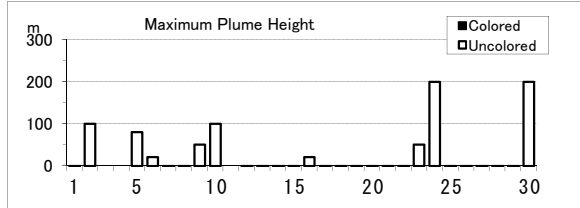
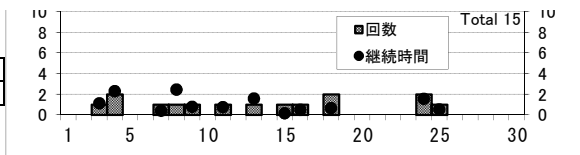
Kuchierabujima: June,2010



噴煙の色(Color of plumes)	W
他の火山現象(Other volcanic phenomena)	-

Note: Uncolored:Plume color was White(W)\*.  
 Colored:Plume color was Light white(LW), Grayish white(GW), Gray(G) and other.

\*Uncolored plumes mean only White(W) color since 1st April, 2010.



#### (44)諏訪之瀬島

##### 震動観測(Seismic Observation)

	月計 total	最大(起日) max (date)
火山性地震回数(Number of volcanic earthquakes)	136	26 (25)
火山性微動回数(Number of volcanic tremors)	45	13 (30)
微動継続時間(Duration of volcanic tremors) (min.)	558	163 (30)

Note: SWA1 (N29°37.7' E129°42.3' H450m)

\* Continuous volcanic tremors occurred intermittently in this month.

Number of volcanic tremors and duration are not including the continuous volcanic tremor.

##### 遠望観測(Visual Observation)

	月計 total	最大(起日) max (date)
爆発回数(Number of explosive eruptions)	-	-

	最大(起日) max (date)
噴煙量(Quantity of plumes) (JMA's scale)	1 (3,9,10)
噴煙の高さ(Height of plumes) (m)	200 (9,10)

噴煙の色(Color of plumes)	W
他の火山現象(Other volcanic phenomena)	GI

Note: Uncolored:Plume color was White(W)\*  
 Colored:Plume color was Light white(LW), Grayish white(GW), Gray(G) and other.

\*Uncolored plumes mean only White(W) color since 1st April, 2010.

#### Suwanosejima: June,2010

