

# 火山観測 Summary of Observations on Volcanoes

## 常時観測 平成21年(2009年)2月

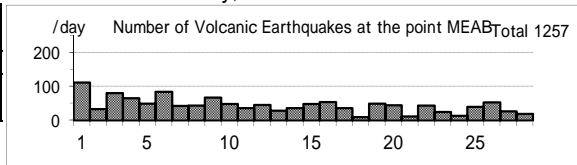
### Constant Observation in February,2009

#### (1) 雌阿寒岳

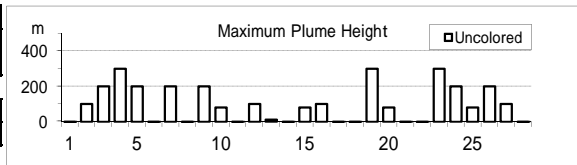
震動観測(Seismic Observation)	月計 total	最大(起日) max (date)
Observation Point: MEAB		
火山性地震回数(Number of volcanic earthquakes)	1257	112 (1)
火山性微動回数(Number of volcanic tremors)	12	3 (1)
微動継続時間(Duration of volcanic tremors) (min.)	17	3 (20)

Note: MEAB (N43 22.8' E143 58.7' H680m)

#### Meakandake: February,2009



遠望観測(Visual Observation)	最大(起日) max (date)
噴煙量(Quantity of plumes) (JMA's scale)	1 (abbr.)
噴煙の高さ(Height of plumes) (m)	300 (4,19,23)
噴煙の色(Color of plumes)	W
他の火山現象(Other volcanic phenomena)	-



Note: Plumes were from the Pommachineshiri Summit Crater(Location T), the Nakamachineshiri Crater(U), the Akanuma Crater(M) and/or Pommachineshiri NW Fumaroles(N).

Note: Uncolored:Plume color was White(W).

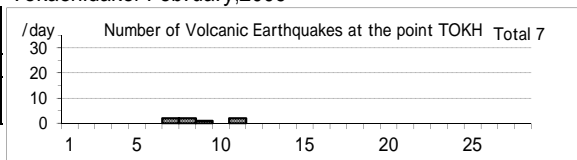
Colored:Plume color was Light white(LW), Grayish white(GW), Gray(G) and other.

#### (2) 十勝岳

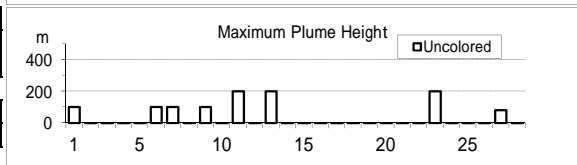
震動観測(Seismic Observation)	月計 total	最大(起日) max (date)
Observation Point: TOKH		
火山性地震回数(Number of volcanic earthquakes)	7	2 (7,8,11)
火山性微動回数(Number of volcanic tremors)	0	0
微動継続時間(Duration of volcanic tremors) (min.)	-	-

Note: TOKH (N43 26.0' E142 40.2' H1,355m)

#### Tokachidake: February,2009



遠望観測(Visual Observation)	最大(起日) max (date)
噴煙量(Quantity of plumes) (JMA's scale)	1 (abbr.)
噴煙の高さ(Height of plumes) (m)	200 (11,13,23)
噴煙の色(Color of plumes)	W
他の火山現象(Other volcanic phenomena)	-



Note: Plumes were from the Taisho Crater(Location X),

the 62 crater Area(P,Q,Y), the Furikozawa Fumaroles (F) and/or the Kyufun Crater (Z).

Note: Uncolored:Plume color was White(W).

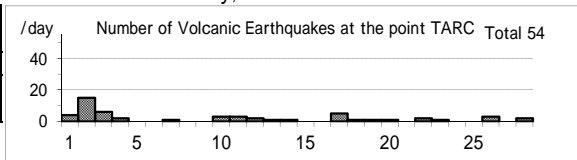
Colored:Plume color was Light white(LW), Grayish white(GW), Gray(G) and other.

#### (3) 樽前山

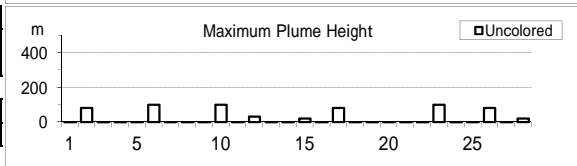
震動観測(Seismic Observation)	月計 total	最大(起日) max (date)
Observation Point: TARC		
火山性地震回数(Number of volcanic earthquakes)	54	15 (2)
火山性微動回数(Number of volcanic tremors)	0	0
微動継続時間(Duration of volcanic tremors) (min.)	-	-

Note: TARC (N42 42.2' E141 22.6' H638m)

#### Tarumaesan: February,2009



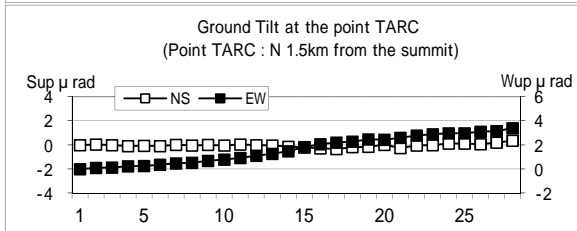
遠望観測(Visual Observation)	最大(起日) max (date)
噴煙量(Quantity of plumes) (JMA's scale)	1 (abbr.)
噴煙の高さ(Height of plumes) (m)	100 (6,10,23)
噴煙の色(Color of plumes)	W
他の火山現象(Other volcanic phenomena)	-



Note: Plumes were from the Summit Area(Location A, B and/or E).

Note: Uncolored:Plume color was White(W).

Colored:Plume color was Light white(LW), Grayish white(GW), Gray(G) and other.



(4)有珠山

震動観測(Seismic Observation)	月計 total	最大(起日) max (date)
Observation Point: USUA		
火山性地震回数(Number of volcanic earthquakes)	28	5 (27)
火山性微動回数(Number of volcanic tremors)	0	0
微動継続時間(Duration of volcanic tremors) (min.)	-	-

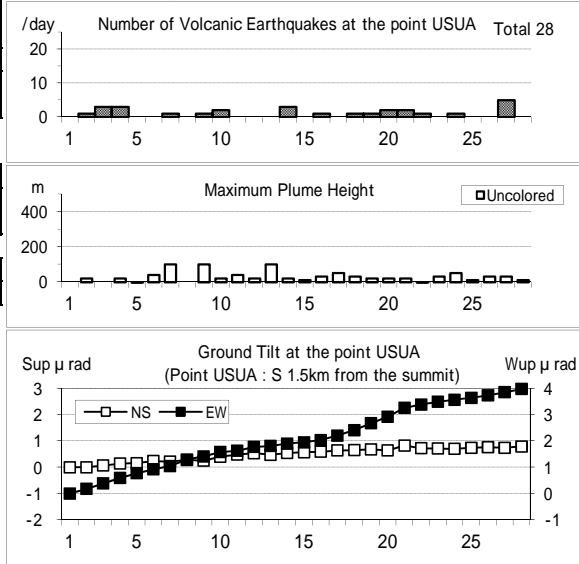
Note: USUA (N42°31.7' E140°50.2' H246m)

遠望観測(Visual Observation)	最大(起日) max (date)
噴煙量(Quantity of plumes) (JMA's scale)	1 (abbr.)
噴煙の高さ(Height of plumes) (m)	100 (7.9,13)
噴煙の色(Color of plumes)	W
他の火山現象(Other volcanic phenomena)	-

Note: Plumes were from the Summit Area of Usuzan(Location P) , Mt.showa-shinazan(Z), Nishi-yama vent group(N) and Konpira-yama vent group(K).

Note: Uncolored:Plume color was White(W).  
Colored:Plume color was Light white(LW), Grayish white(GW), Gray(G) and other.

Usuzan: February,2009



(5)北海道駒ヶ岳

震動観測(Seismic Observation)	月計 total	最大(起日) max (date)
Observation Point: KOMA		
火山性地震回数(Number of volcanic earthquakes)	0	0
火山性微動回数(Number of volcanic tremors)	0	0
微動継続時間(Duration of volcanic tremors) (min.)	-	-

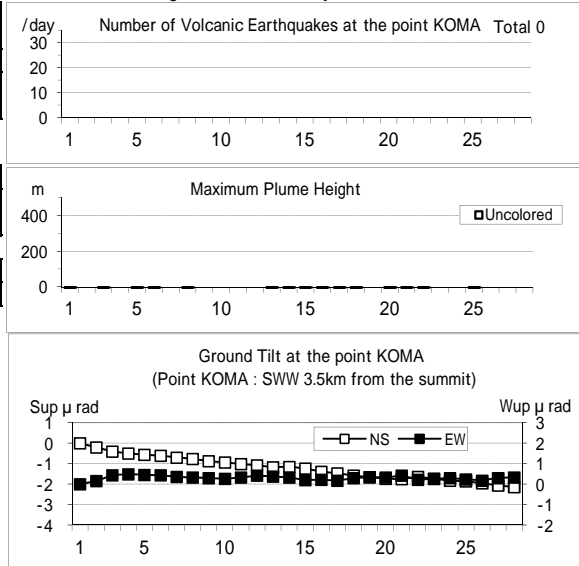
Note: KOMA (N42°03.2' E140°38.3' H265m)

遠望観測(Visual Observation)	最大(起日) max (date)
噴煙量(Quantity of plumes) (JMA's scale)	-
噴煙の高さ(Height of plumes) (m)	-
噴煙の色(Color of plumes)	-
他の火山現象(Other volcanic phenomena)	-

Note: Plumes were from the Showa-4 Crater(Location D1) and/or the 96 South Crater(D2).

Note: Uncolored:Plume color was White(W).  
Colored:Plume color was Light white(LW), Grayish white(GW), Gray(G) and other.

Hokkaido-Komagatake: February,2009



(6)吾妻山

震動観測(Seismic Observation)	月計 total	最大(起日) max (date)
Observation Point: AZUA		
火山性地震回数(Number of volcanic earthquakes)	32	5 (27)
火山性微動回数(Number of volcanic tremors)	0	0
微動継続時間(Duration of volcanic tremors) (min.)	-	-

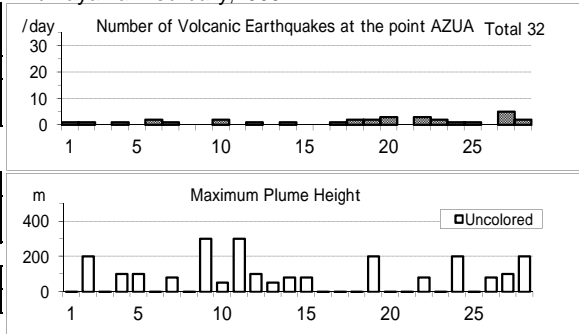
Note: AZUA (N37°43.3' E140°16.5' H1,295m)

遠望観測(Visual Observation)	最大(起日) max (date)
噴煙量(Quantity of plumes) (JMA's scale)	1 (abbr.)
噴煙の高さ(Height of plumes) (m)	300 (9.11)
噴煙の色(Color of plumes)	W
他の火山現象(Other volcanic phenomena)	-

Note: Plumes were from the Oana Crater

Note: Uncolored:Plume color was White(W).  
Colored:Plume color was Light white(LW), Grayish white(GW), Gray(G) and other.

Azumayama: February,2009



(7)安達太良山

震動観測(Seismic Observation)

Observation Point: ADTB	月計 total	最大(起日) max (date)
火山性地震回数(Number of volcanic earthquakes)	0	0
火山性微動回数(Number of volcanic tremors)	0	0
微動継続時間(Duration of volcanic tremors) (min.)	-	-

Note: ADTB(N37° 38.1 E140° 18.2 H1,320m)

遠望観測(Visual Observation)

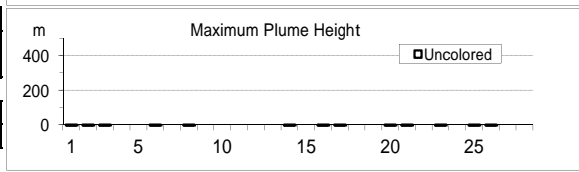
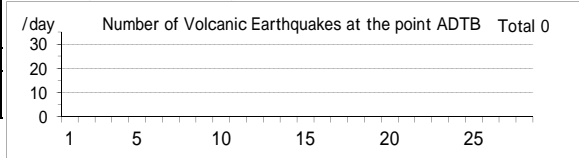
	最大(起日) max (date)
噴煙量(Quantity of plumes) (JMA's scale)	-
噴煙の高さ(Height of plumes) (m)	-
噴煙の色(Color of plumes)	-
他の火山現象(Other volcanic phenomena)	-

Note: Plumes were from the Numanodaira - SW area.

Note: Uncolored:Plume color was White(W).

Colored:Plume color was Light white(LW), Grayish white(GW), Gray(G) and other.

Adatarayama: February,2009



(8)磐梯山

震動観測(Seismic Observation)

Observation Point: BNDA	月計 total	最大(起日) max (date)
火山性地震回数(Number of volcanic earthquakes)	14	8 (16)
火山性微動回数(Number of volcanic tremors)	0	0
微動継続時間(Duration of volcanic tremors) (min.)	-	-

Note: BNDA (N37° 35.0 E140° 04.8 H1000m)

遠望観測(Visual Observation)

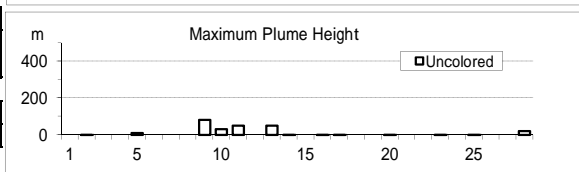
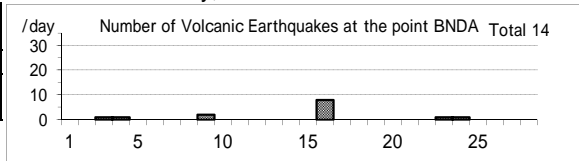
	最大(起日) max (date)
噴煙量(Quantity of plumes) (JMA's scale)	1 (abbr.)
噴煙の高さ(Height of plumes) (m)	80 (9)
噴煙の色(Color of plumes)	W
他の火山現象(Other volcanic phenomena)	-

Note: Plumes were from the Fumarolic area in Crater wall.

Note: Uncolored:Plume color was White(W).

Colored:Plume color was Light white(LW), Grayish white(GW), Gray(G) and other.

Bandaisan: February,2009



(9)那須岳

震動観測(Seismic Observation)

Observation Point: NSUA	月計 total	最大(起日) max (date)
火山性地震回数(Number of volcanic earthquakes)	9	3 (9)
火山性微動回数(Number of volcanic tremors)	0	0
微動継続時間(Duration of volcanic tremors) (min.)	-	-

Note: NSUA (N37° 06.2' E139° 59.6' H1,083m)

遠望観測(Visual Observation)

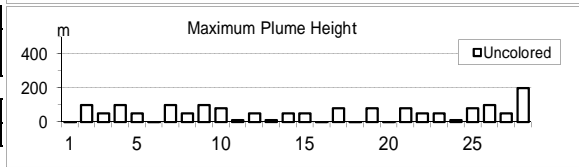
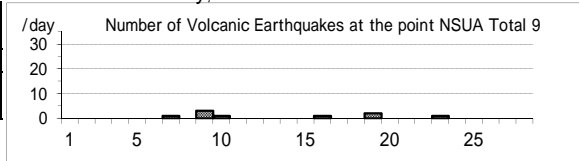
	最大(起日) max (date)
噴煙量(Quantity of plumes) (JMA's scale)	1 (abbr.)
噴煙の高さ(Height of plumes) (m)	200 (28)
噴煙の色(Color of plumes)	W
他の火山現象(Other volcanic phenomena)	-

Note: Plumes were from the west flank of Mt. Nasudake.

Note: Uncolored:Plume color was White(W).

Colored:Plume color was Light white(LW), Grayish white(GW), Gray(G) and other.

Nasudake: February,2009



(10)草津白根山

震動観測(Seismic Observation)

Observation Point: KSHA	月計 total	最大(起日) max (date)
火山性地震回数(Number of volcanic earthquakes)	10	2 (5)
火山性微動回数(Number of volcanic tremors)	0	0
微動継続時間(Duration of volcanic tremors) (min.)	-	-

Note: KSHA (N36° 38.9' E138° 32.7' H1,933m)

遠望観測(Visual Observation)

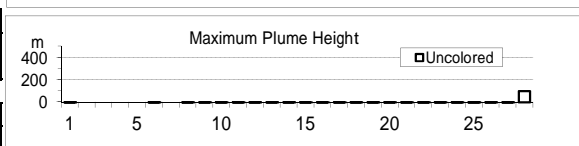
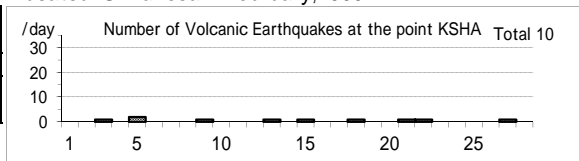
	最大(起日) max (date)
噴煙量(Quantity of plumes) (JMA's scale)	1 (28)
噴煙の高さ(Height of plumes) (m)	100 (28)
噴煙の色(Color of plumes)	W
他の火山現象(Other volcanic phenomena)	-

Note: Plumes were from the Yugama Crater and Fumaroles at northern side of Yugama Crater

Note: Uncolored:Plume color was White(W).

Colored:Plume color was Light white(LW), Grayish white(GW), Gray(G) and other.

Kusatsu-Shiranesan: February,2009



(11)浅間山

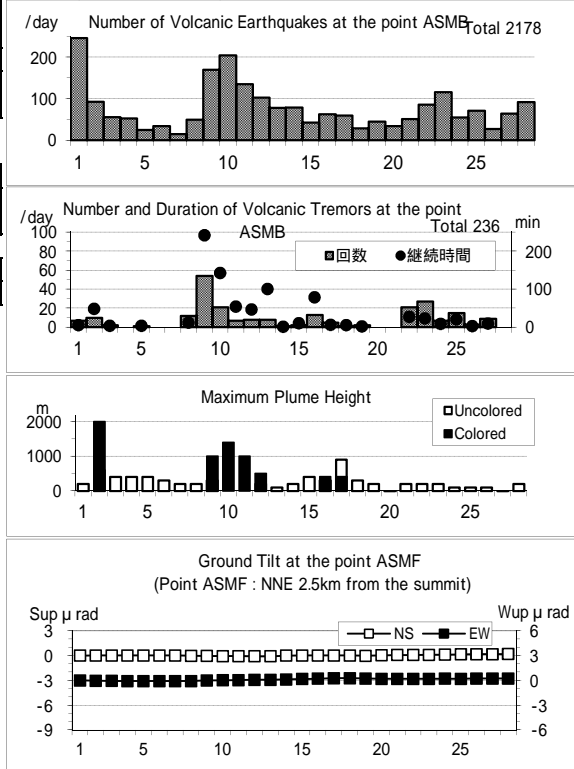
震動観測(Seismic Observation) Observation Point: ASMB	月計 total	最大(起日) max (date)
火山性地震回数(Number of volcanic earthquakes)	2178	246 (1)
火山性微動回数(Number of volcanic tremors)	236	54 (9)
微動継続時間(Duration of volcanic tremors) (min.)	849	241 (9)

Note: ASMB (N36°23.4' E138°31.1' H1,864m)

遠望観測(Visual Observation)	最大(起日) max (date)
噴煙量(Quantity of plumes) (JMA's scale)	5 (10)
噴煙の高さ(Height of plumes) (m)	2000 (2)
噴煙の色(Color of plumes)	W,LW,GW
他の火山現象(Other volcanic phenomena)	-

Note: Plumes were from the Kamayama Crater(Location A).  
 Note: Uncolored:Plume color was White(W).  
 Colored:Plume color was Light white(LW), Grayish white(GW), Gray(G) and other.

Asamayama: February,2009



(12)御嶽山

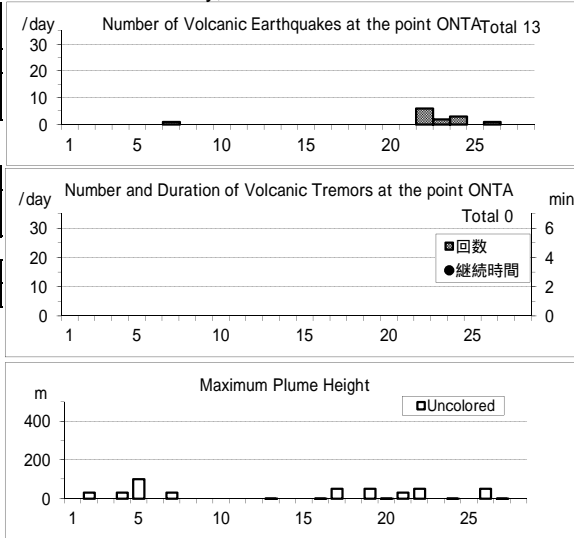
震動観測(Seismic Observation) Observation Point: ONTA	月計 total	最大(起日) max (date)
火山性地震回数(Number of volcanic earthquakes)	13	6 (22)
火山性微動回数(Number of volcanic tremors)	0	0
微動継続時間(Duration of volcanic tremors) (min.)	-	-

Note: ONTA (N35°52.6' E137°29.7' H2,228m)

遠望観測(Visual Observation)	最大(起日) max (date)
噴煙量(Quantity of plumes) (JMA's scale)	1 (abbr.)
噴煙の高さ(Height of plumes) (m)	100 (5)
噴煙の色(Color of plumes)	W
他の火山現象(Other volcanic phenomena)	-

Note: Plumes were from the Otaki summit Crater (A) and/or S6  
 Note: Uncolored:Plume color was White(W).  
 Colored:Plume color was Light white(LW), Grayish white(GW), Gray(G) and other.

Ontakesan: February,2009



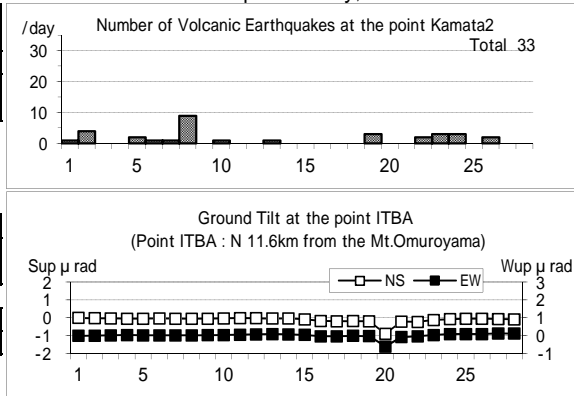
(13)伊豆東部火山群

震動観測(Seismic Observation) Observation Point: ITBA,Kamata2	月計 total	最大(起日) max (date)
火山性地震回数(Number of volcanic earthquakes)	33	9 (8)
火山性微動回数(Number of volcanic tremors)	0	0
微動継続時間(Duration of volcanic tremors) (min.)	-	-

Note: ITBA (N35°00.5' E139°05.9' H12m)  
 Kamata2(N34°55.71' E139°03.65' H175m)

遠望観測(Visual Observation)	最大(起日) max (date)
噴煙量(Quantity of plumes) (JMA's scale)	-
噴煙の高さ(Height of plumes) (m)	-
噴煙の色(Color of plumes)	-
他の火山現象(Other volcanic phenomena)	-

Izu-Tobu Volcano Group: February,2009



(14)伊豆大島

震動観測(Seismic Observation)  
Observation Point: OSMA

	月計 total	最大(起日) max (date)
火山性地震回数(Number of volcanic earthquakes)	67	9 (23)
火山性微動回数(Number of volcanic tremors)	0	0
微動継続時間(Duration of volcanic tremors) (min.)	-	-

Note: OSMA (N34 44.2' E139 23.2' H553m)

遠望観測(Visual Observation)

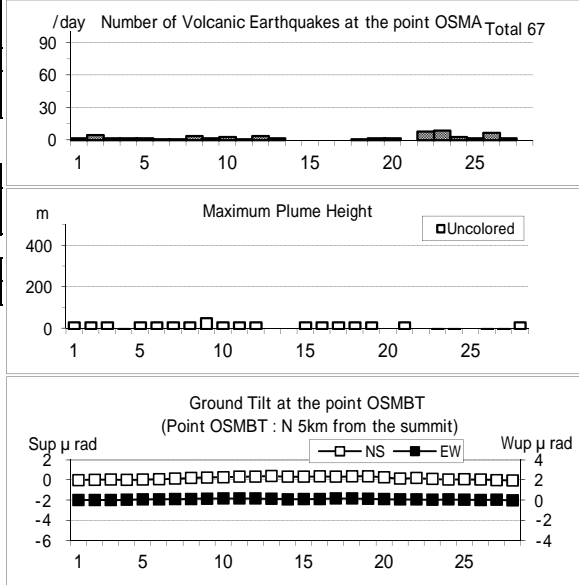
	最大(起日) max (date)
噴煙量(Quantity of plumes) (JMA's scale)	1 (abbr.)
噴煙の高さ(Height of plumes) (m)	50 (9)
噴煙の色(Color of plumes)	W
他の火山現象(Other volcanic phenomena)	-

Note:Plumes were from the Miharayama Summit Crater(Location A),  
the Fumaroles at western side of Miharashinzan(A1),  
the Fumaroles near Kengamine(A2),  
the Fumaroles at eastern side of Miharashinzan(A3)

Note: Uncolored:Plume color was White(W).

Colored:Plume color was Light white(LW), Grayish white(GW),  
Gray(G) and other.

Izu-Oshima: February,2009



(15)三宅島

震動観測(Seismic Observation)  
Observation Point: MKJA

	月計 total	最大(起日) max (date)
火山性地震回数(Number of volcanic earthquakes)	5948	265 (16)
火山性微動回数(Number of volcanic tremors)	3	2 (27)
微動継続時間(Duration of volcanic tremors) (min.)	7	4 (28)

Note: MKJA (N34 05.9' E139 32.0' H527m)

遠望観測(Visual Observation)

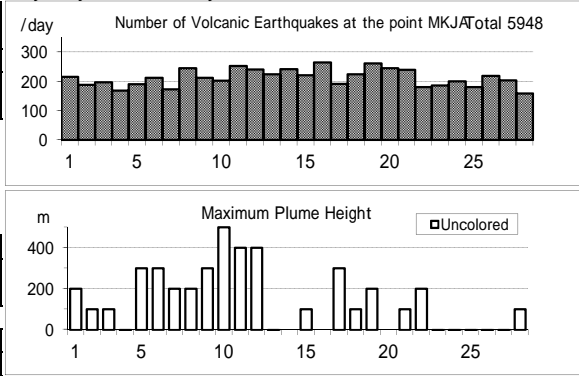
	最大(起日) max (date)
噴煙量(Quantity of plumes) (JMA's scale)	3 (9,11)
噴煙の高さ(Height of plumes) (m)	500 (10)
噴煙の色(Color of plumes)	W
他の火山現象(Other volcanic phenomena)	-

Note: Plumes were from the Summit Crater.

Note: Uncolored:Plume color was White(W).

Colored:Plume color was Light white(LW), Grayish white(GW), Gray(G) and other.

Miyakejima: February,2009



(16)九重山

震動観測(Seismic Observation)

Observation Point: KJUA	月計 total	最大(起日) max (date)
火山性地震回数(Number of volcanic earthquakes)	3	1 (2,5,12)
火山性微動回数(Number of volcanic tremors)	0	0
微動継続時間(Duration of volcanic tremors) (min.)	-	-

Note: KJUA (N33°06.2' E131°13.7' H1,280m)

遠望観測(Visual Observation)

Observation Point: KJUA	最大(起日) max (date)
噴煙量(Quantity of plumes) (JMA's scale)	1 (abbr.)
噴煙の高さ(Height of plumes) (m)	400 (4,28)

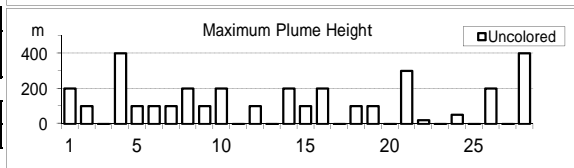
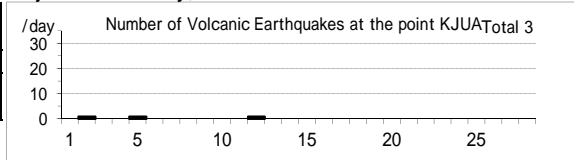
噴煙の色(Color of plumes)	W
他の火山現象(Other volcanic phenomena)	-

Note: Plumes were from the east and/or north-east flank of Mt. Hossho (Location A,B,C or D).

Note: Uncolored:Plume color was White(W).

Colored:Plume color was Light white(LW), Grayish white(GW), Gray(G) and other.

Kujusan: February,2009



(17)阿蘇山

震動観測(Seismic Observation)

Observation Point: ASOA	月計 total	最大(起日) max (date)
火山性地震回数(Number of volcanic earthquakes)	93	10 (12)
孤立型火山性微動回数 (Number of isolated volcanic tremors)	1916	97 (15)

Note: ASOA (N32°53.1' E131°04.7' H1,163m)

遠望観測(Visual Observation)

Observation Point: ASOA	最大(起日) max (date)
噴煙量(Quantity of plumes) (JMA's scale)	2 (10)
噴煙の高さ(Height of plumes) (m)	400 (abbr.)

噴煙の色(Color of plumes)	W
他の火山現象(Other volcanic phenomena)	-

Note: Plumes were from the Crater No.1 of Mt. Nakadake.

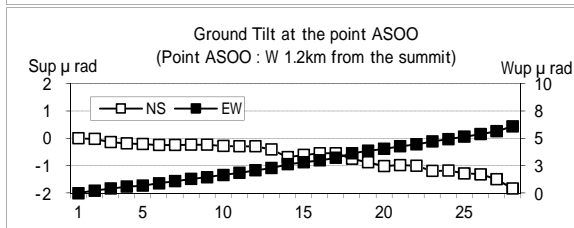
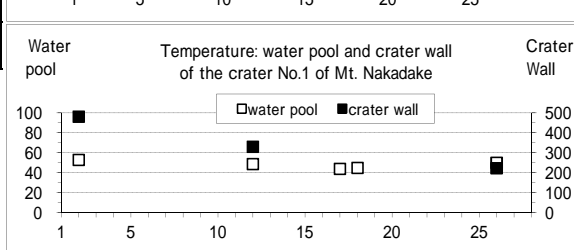
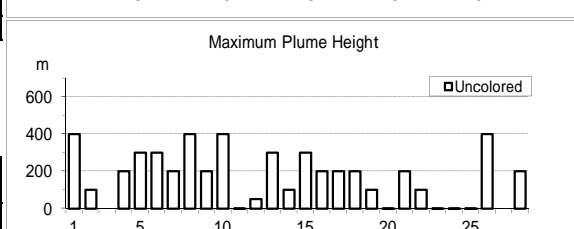
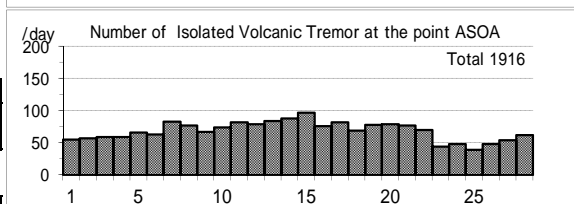
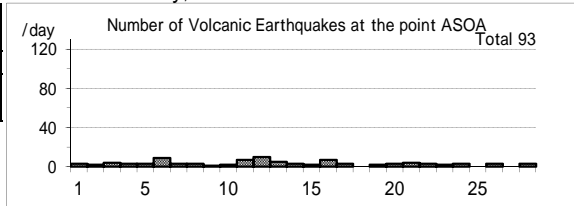
Note: Uncolored:Plume color was White(W).

Colored:Plume color was Light white(LW), Grayish white(GW), Gray(G) and other.

現地観測(Field Observation)

Observation Point: the Crater No.1 of Mt. Nakadake	最高(起日) max (date)	最低(起日) min (date)
	火口内の湯だまりの表面温度 (Surface temperature on the water pool in the crater) ( )	53 (2)
火口壁の表面温度 (Surface temperature on the crater wall) ( )	483 (2)	224 (26)

Asosan: February,2009



(18)雲仙岳

震動観測(Seismic Observation)

Observation Point: UNZA	月計 total	最大(起日) max (date)
火山性地震回数(Number of volcanic earthquakes)	2	1 (5,18)
火山性微動回数(Number of volcanic tremors)	0	0
微動継続時間(Duration of volcanic tremors) (min)	-	-

Note: UNZA (N32° 44.1' E130° 16.1' H769m)

遠望観測(Visual Observation)

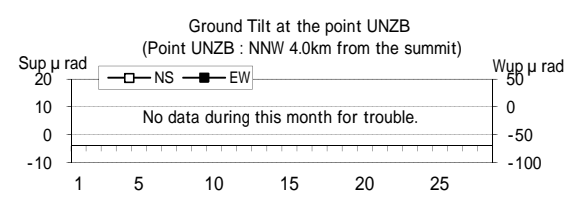
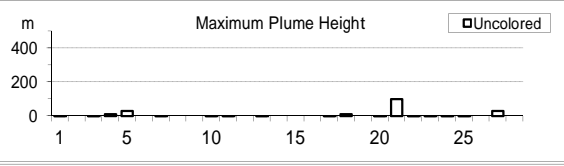
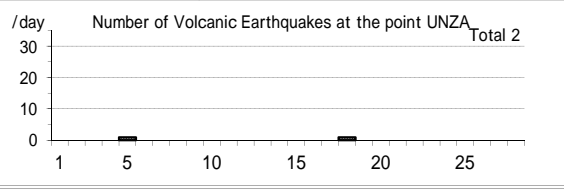
	最大(起日) max (date)
噴煙量(Quantity of plumes) (JMA's scale)	1 (abbr.)
噴煙の高さ(Height of plumes) (m)	100 (21)
噴煙の色(Color of plumes)	W
他の火山現象(Other volcanic phenomena)	-

Note: Plumes were from the 10th Lava Dome(Location A10) and/or the 11th Lava Dome(A11).

Note: Uncolored:Plume color was White(W).

Colored:Plume color was Light white(LW), Grayish white(GW), Gray(G) and other.

Unzendake: February,2009



(19)霧島山

新燃岳 (Shinmoedake)

震動観測(Seismic Observation)

Observation Point: KIRA	月計 total	最大(起日) max (date)
火山性地震回数(Number of volcanic earthquakes)	35	10 (4)
火山性微動回数(Number of volcanic tremors)	0	0
微動継続時間(Duration of volcanic tremors) (min)	-	-

Note: KIRA (N31° 54.0' E130° 52.3' H1,035m)

遠望観測(Visual Observation)

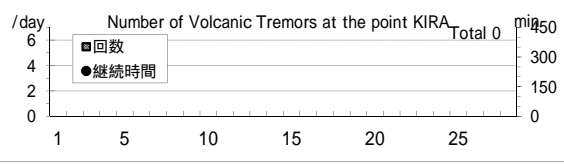
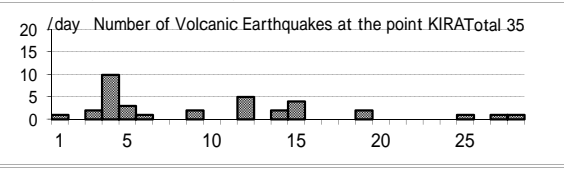
	最大(起日) max (date)
噴煙量(Quantity of plumes) (JMA's scale)	1 (abbr.)
噴煙の高さ(Height of plumes) (m)	300 (6)
噴煙の色(Color of plumes)	W
他の火山現象(Other volcanic phenomena)	-

Note: Plumes were from the Shinmoedake Crater

Note: Uncolored:Plume color was White(W).

Colored:Plume color was Light white(LW), Grayish white(GW), Gray(G) and other.

Kirishimayama: February,2009



御鉢(Ohachi)

震動観測(Seismic Observation)

Observation Point: KTCM	月計 total	最大(起日) max (date)
火山性地震回数(Number of volcanic earthquakes)	2	1 (7,9)
火山性微動回数(Number of volcanic tremors)	0	0
微動継続時間(Duration of volcanic tremors) (min)	-	-

Note: KTCM (N31° 53.2' E130° 55.2' H1,549m)

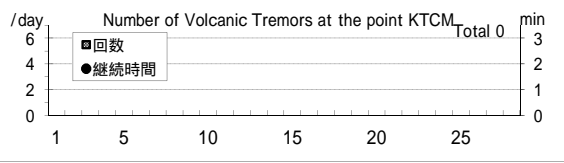
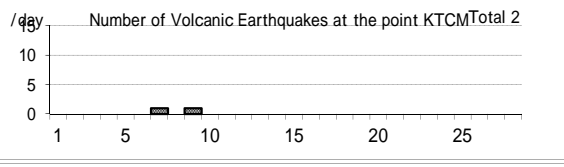
遠望観測(Visual Observation)

	最大(起日) max (date)
噴煙量(Quantity of plumes) (JMA's scale)	1 (abbr.)
噴煙の高さ(Height of plumes) (m)	300 (6)
噴煙の色(Color of plumes)	W
他の火山現象(Other volcanic phenomena)	-

Note: Plumes were from the Ohachi Crater

Note: Uncolored:Plume color was White(W).

Colored:Plume color was Light white(LW), Grayish white(GW), Gray(G) and other.



(20)桜島

震動観測(Seismic Observation)

Observation Point: SKRB	月計 total	最大(起日) max (date)
火山性地震回数(Number of volcanic earthquakes)	167	17 (28)
火山性微動回数(Number of volcanic tremors)	21	5 (4)
微動継続時間(Duration of volcanic tremors) (min)	65	27 (4)

Note: SKRB (N31°35.6' E130°38.4' H455m)

遠望観測(Visual Observation)

	月計 total	最大(起日) max (date)
爆発回数(Number of explosive eruptions)	15	5 (1)
降灰量(Amount of ash fall) (g/m <sup>2</sup> )	1	1 (2)

A,B火口 (A,B crater)	最大(起日) max (date)
噴煙量(Quantity of plumes) (JMA's scale)	3 (22)
噴煙の高さ(Height of plumes) (m)	1500 (22)

昭和火口 (Showa crater)	最大(起日) max (date)
噴煙量(Quantity of plumes) (JMA's scale)	4 (2)
噴煙の高さ(Height of plumes) (m)	2200 (2)

噴煙の色(Color of plumes)	W,LW,GW
他の火山現象(Other volcanic phenomena)	Gl,As,Bm

Note: Plumes were from Mt. Minamidake A Crater(A), B Crater(B) and Showa Crater(S)

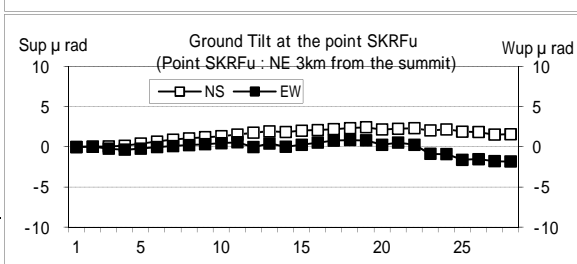
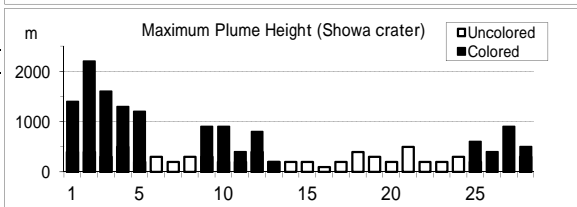
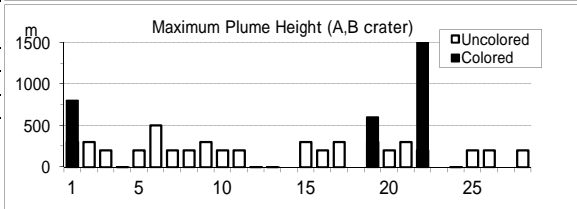
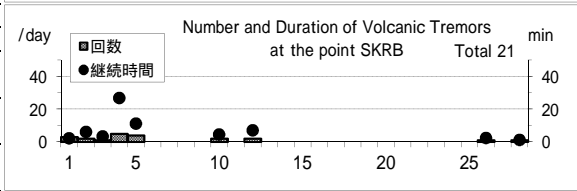
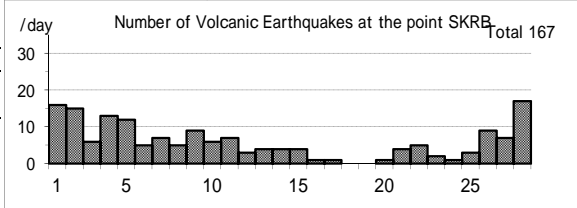
Note: Uncolored:Plume color was White(W).

Colored:Plume color was Light white(LW), Grayish white(GW), Gray(G) and other.

爆発時の遠望観測(Visual observation of explosion)

Date	Time	Col	Q	H(*100m)	Dir	Remarks
0201	1110	GW	2	7	S	AS 5.5(O), 11.4(D)
0201	1717	GW	3	14	SW	Bm(7合目),AS 5.2(O), 14.0(D)
0201	1835	x	3	12	S	Bm(5合目),AS 4.2(O), 8.8(D)
0201	1957	x	3	12	S	Bm(5合目),AS 11.2(O), 17.0(D)
0201	2022	x	3	10	S	Bm(6合目),AS 4.1(O), 9.2(D)
0202	0200	x	4	22	S	Bm(5合目),AS 5.3(O), 13.5(D)
0202	0457	x	3	12	S	Bm(6合目),AS 3.9(O), 13.4(D)
0202	0626	x	3	14	SE	Bm(5合目),AS 7.1(O), 35.2(D)
0202	1109	GW	3	14	SE	AS 2.5(O), 15.8(D)
0203	1632	GW	3	7	E	Bm(7合目),AS 2.2(O), 44.4(D)
0203	1721	GW	3	7	SE	Bm(7合目),AS 3.9(O), 69.7(D)
0203	2358	x	3	>12	SE	Bm(6合目),AS 3.3(O), 11.2(D)
0204	0715	GW	3	13	SE	AS 3.2(O), 10.2(D)
0222	1058	GW	3	15	N	AS 8.8(O), 24.1(D)
0228	1909	x	x	x	x	Bm(5合目),AS 0.8(O), 2.4(D)

Sakurajima: February,2009





## 臨時観測 平成21年(2009年)2月 Extra Observation in February,2009

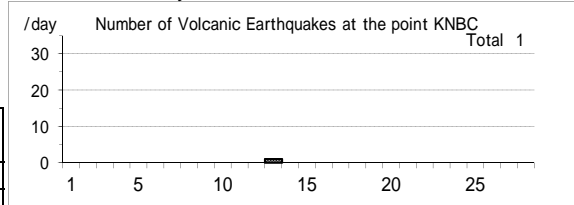
### (1)倶多楽

札幌火山監視・情報センターによる火山機動観測  
Mobile observation by the Sapporo VOIC  
Date: Since 15 Jul.,2004

震動観測(Seismic Observation)	月計 total	最大(起日) max (date)
Observation Point: KNBC		
火山性地震回数(Number of volcanic earthquakes)	1	1 (13)
火山性微動回数(Number of volcanic tremors)	0	0
微動継続時間(Duration of volcanic tremors) (min.)	-	-

Note:KNBC (N42°30.1' E141°7.4' H570m)

### Kuttara: February,2009



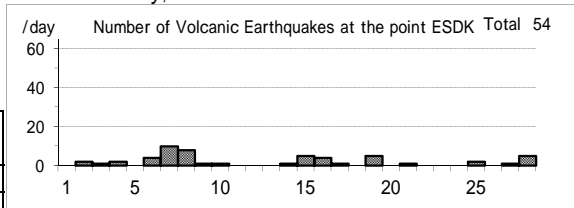
### (2)恵山

札幌火山監視・情報センターによる火山機動観測  
Mobile observation by the Sapporo VOIC  
Date: Since 24 Jul.,2005

震動観測(Seismic Observation)	月計 total	最大(起日) max (date)
Observation Point: ESDK		
火山性地震回数(Number of volcanic earthquakes)	54	10 (7)
火山性微動回数(Number of volcanic tremors)	0	0
微動継続時間(Duration of volcanic tremors) (min.)	-	-

Note: ESDK (N41°48.7' E141°9.7' H369m)

### Esan: February,2009



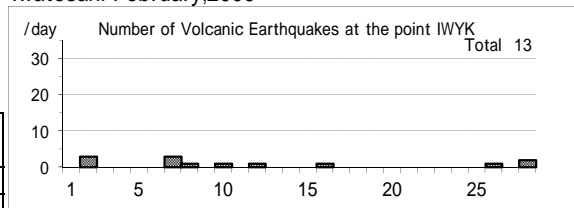
### (3)岩手山

仙台火山監視・情報センターによる火山機動観測  
Mobile observation by the Sendai VOIC  
Date: Since 4 Oct.,1995

震動観測(Seismic Observation)	月計 total	最大(起日) max (date)
Observation Point: IWYK		
火山性地震回数(Number of volcanic earthquakes)	13	3 (2,7)
火山性微動回数(Number of volcanic tremors)	0	0
微動継続時間(Duration of volcanic tremors) (min.)	-	-

Note:IWYK (N39°52.7' E140°57.6' H763m)

### Iwatesan: February,2009



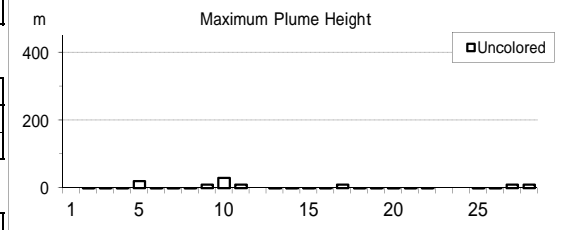
遠望観測(Visual Observation)	最大(起日) max (date)
噴煙量(Quantity of plumes) (JMA's scale)	1 (abbr.)
噴煙の高さ(Height of plumes) (m)	30 (10)

噴煙の色(Color of plumes)	W
他の火山現象(Other volcanic phenomena)	-

Note: Plumes were from the Kurokurayama Summit(LocationX), the Ojigokudani(Y-6)

Note: Uncolored:Plume color was White(W), Light white(LW).

Colored:Plume color was Grayish white(GW), Gray(G) and other.



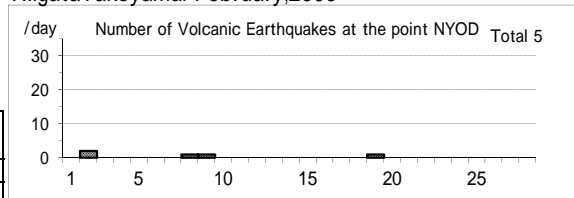
### (4)新潟焼山

気象庁本庁による火山機動観測  
Mobile observation by the headquarter of JMA  
Date: Since 1 Dec.,2005

震動観測(Seismic Observation)	月計 total	最大(起日) max (date)
Observation Point: NYOD		
火山性地震回数(Number of volcanic earthquakes)	5	2 (2)
火山性微動回数(Number of volcanic tremors)	0	0
微動継続時間(Duration of volcanic tremors) (min.)	-	-

Note: NYOD (N36°57.4' E138°2.3' H1,150m)

### NiigataYakeyama: February,2009



### (5) 白山

気象庁本庁による火山機動観測

Mobile observation by the headquarter of JMA

Date: Since 1 Dec.,2005

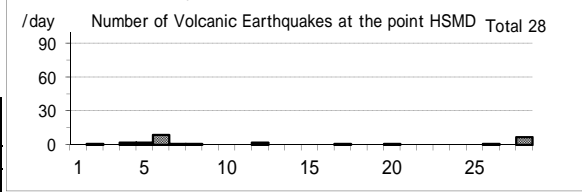
震動観測(Seismic Observation)

Observation Point: HSMD

	月計 total	最大(起日) max (date)
火山性地震回数(Number of volcanic earthquakes)	28	9 (6)
火山性微動回数(Number of volcanic tremors)	0	0
微動継続時間(Duration of volcanic tremors) (min.)	-	-

Note: HSMD (N36°8.8' E136°45.9' H2,345m)

### Hakusan: February,2009



### (6) 富士山

気象庁本庁による火山機動観測

Mobile observation by the headquarter of JMA

Date: Since 18 Oct.,1987

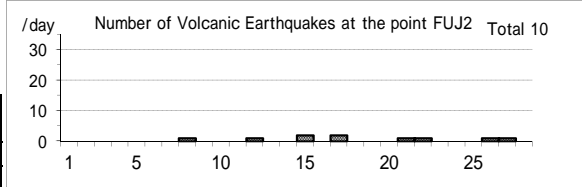
震動観測(Seismic Observation)

Observation Point: FUJ2

	月計 total	最大(起日) max (date)
火山性地震回数(Number of volcanic earthquakes)	10	2 (15,17)
火山性微動回数(Number of volcanic tremors)	0	0
微動継続時間(Duration of volcanic tremors) (min.)	-	-

Note: FUJ2 (N35°21.6' E138°43.6' H3,772m)

### Fujisan: February,2009



### (7) 桜島

地磁気観測所鹿屋出張所による桜島の日降灰量観測

Extra observation of daily amounts of ash fall from Sakurajima by the Kanoya Satellite Observatory, the Magnetic Observatory, JMA

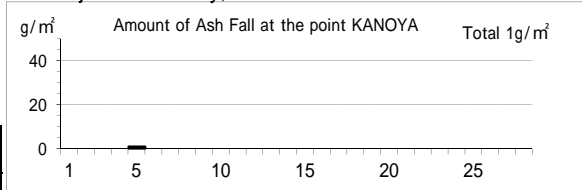
Date: daily (a.m. 0900)

遠望観測(Visual Observation)

Observation Point: KANOYA

	月計 total	最大(起日) max (date)
降灰量(Amount of ash fall) (g/m <sup>2</sup> )	1	1 (5)

### Sakurajima: February,2009



### (8) 薩摩硫黄島

福岡火山監視・情報センター、鹿児島地方気象台による火山機動観測

Mobile observation by the Fukuoka VOIC and Kagoshima LMO

Date: Since 10 Sep.,1997

震動観測(Seismic Observation)

Observation Point: ST11

	月計 total	最大(起日) max (date)
火山性地震回数(Number of volcanic earthquakes)	90	8 (25)
火山性微動回数(Number of volcanic tremors)	0	0
微動継続時間(Duration of volcanic tremors) (min.)	-	-

Note: ST11 (N30°47.3' E130°18.1' H380m)

遠望観測(Visual Observation)

最大(起日) max (date)

噴煙量(Quantity of plumes) (JMA's scale)	2 (6)
噴煙の高さ(Height of plumes) (m)	500 (6)

噴煙の色(Color of plumes)

W

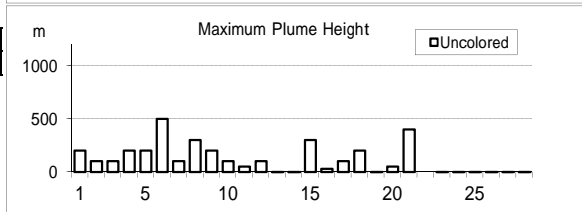
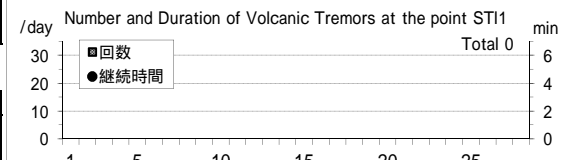
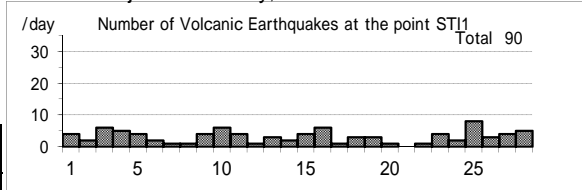
他の火山現象(Other volcanic phenomena)

-

Note: Uncolored:Plume color was White(W), Light white(LW).

Colored:Plume color was Grayish white(GW), Gray(G) and other.

### Satsuma-Iojima: February,2009



(9)口永良部島

福岡火山監視・情報センター、鹿児島地方気象台による火山機動観測  
 Mobile observation by the Fukuoka VOIC and Kagoshima LMO  
 Date: Since 11 Sep.,1999 (seismic), 10 Mar.,2004 (Visual)

震動観測(Seismic Observation)	月計 total	最大(起日) max (date)
Observation Point: KER1		
火山性地震回数(Number of volcanic earthquakes)	72	13 (6)
火山性微動回数(Number of volcanic tremors)	0	0
微動継続時間(Duration of volcanic tremors) (min.)	-	-

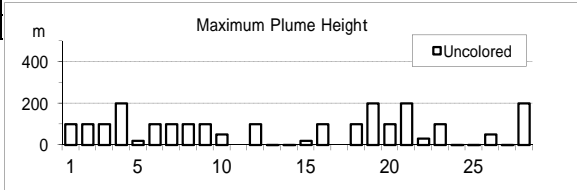
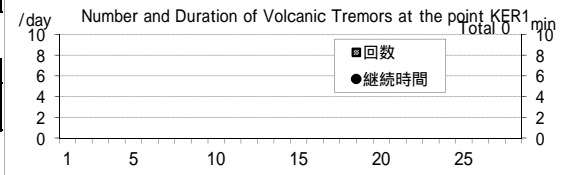
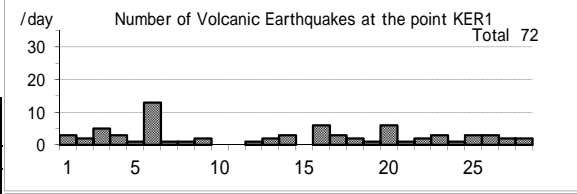
Note: KER1 (N30°26.9' E130°12.9' H566m)

遠望観測(Visual Observation)	最大(起日) max (date)
噴煙量(Quantity of plumes) (JMA's scale)	1 (abbr.)
噴煙の高さ(Height of plumes) (m)	200 (abbr.)

噴煙の色(Color of plumes)	W
他の火山現象(Other volcanic phenomena)	-

Note: Uncolored:Plume color was White(W), Light white(LW).  
 Colored:Plume color was Grayish white(GW), Gray(G) and other.

Kuchinoerabujima: February,2009



(10)諏訪之瀬島

福岡火山監視・情報センター、鹿児島地方気象台による火山機動観測  
 Mobile observation by the Fukuoka VOIC and Kagoshima LMO  
 Date: Since 6 Jul.,2001

震動観測(Seismic Observation)	月計 total	最大(起日) max (date)
Observation Point: SWA1		
火山性地震回数(Number of volcanic earthquakes)	159	26 (27)
火山性微動回数(Number of volcanic tremors)	20	6 (27)
微動継続時間(Duration of volcanic tremors) (min.)	105	47 (18)

Note: SWA1 (N29°37.7' E129°42.3' H450m)

遠望観測(Visual Observation)	月計 total	最大(起日) max (date)
爆発回数(Number of explosive eruptions)	9	3 (27)

	最大(起日) max (date)
噴煙量(Quantity of plumes) (JMA's scale)	2 (4,18)
噴煙の高さ(Height of plumes) (m)	500 (4)

噴煙の色(Color of plumes)	W,GW
他の火山現象(Other volcanic phenomena)	-

Note: Uncolored:Plume color was White(W), Light white(LW).  
 Colored:Plume color was Grayish white(GW), Gray(G) and other.

Suwanosejima: February,2009

