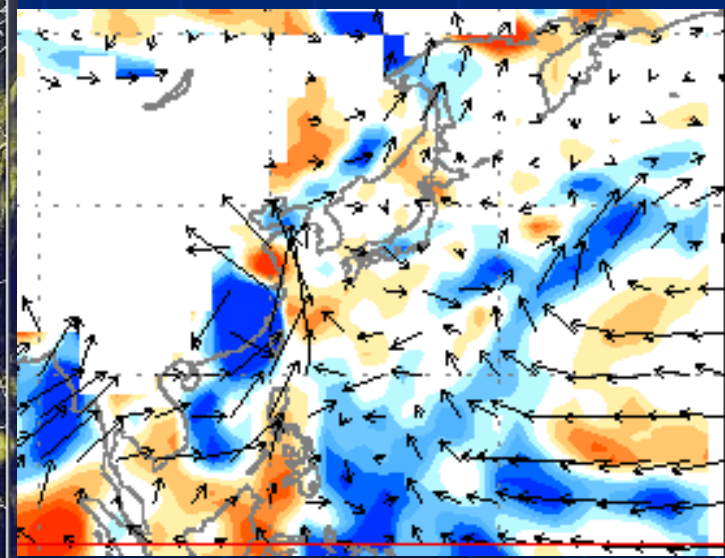
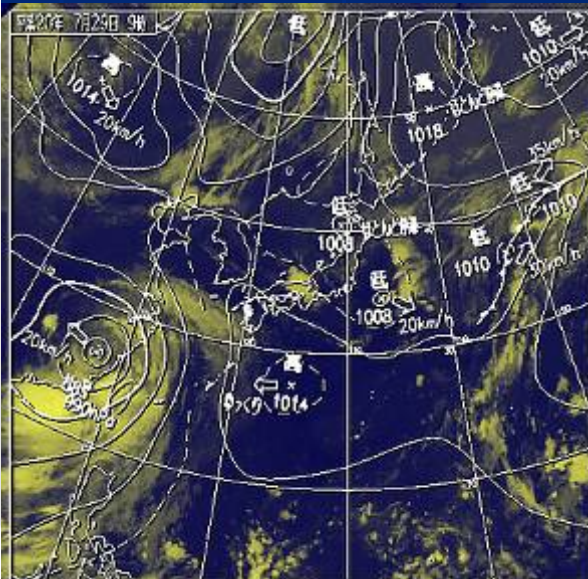
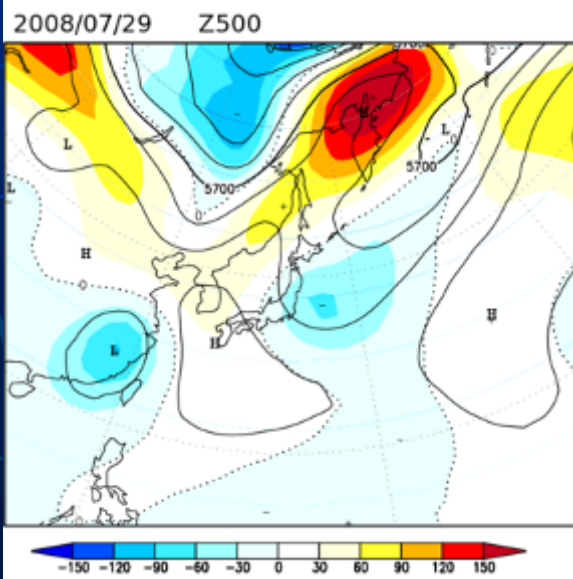
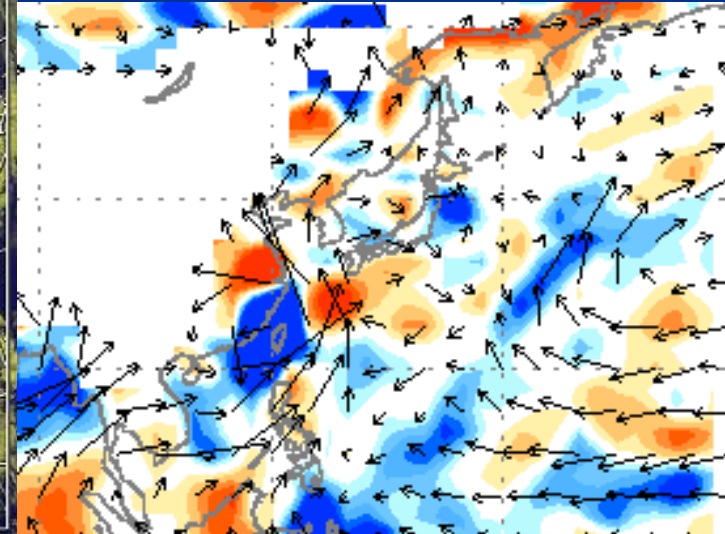
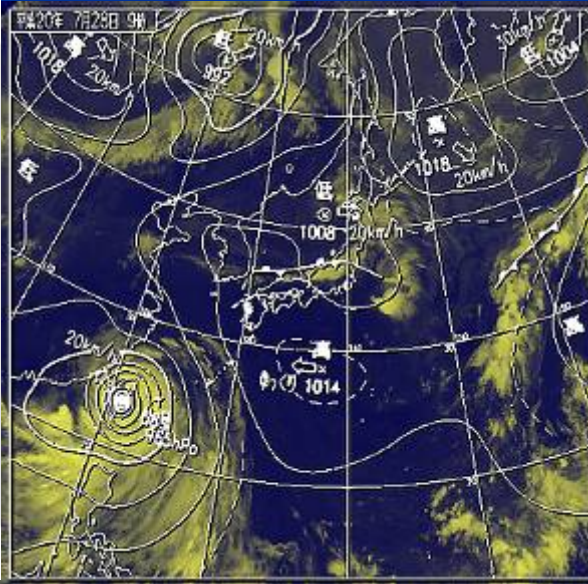
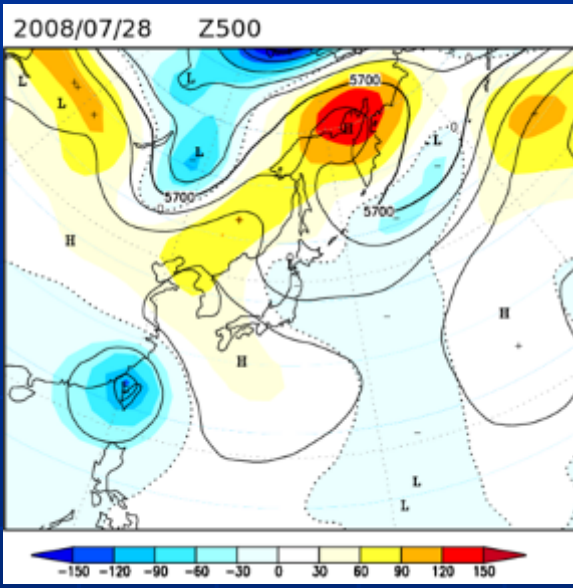


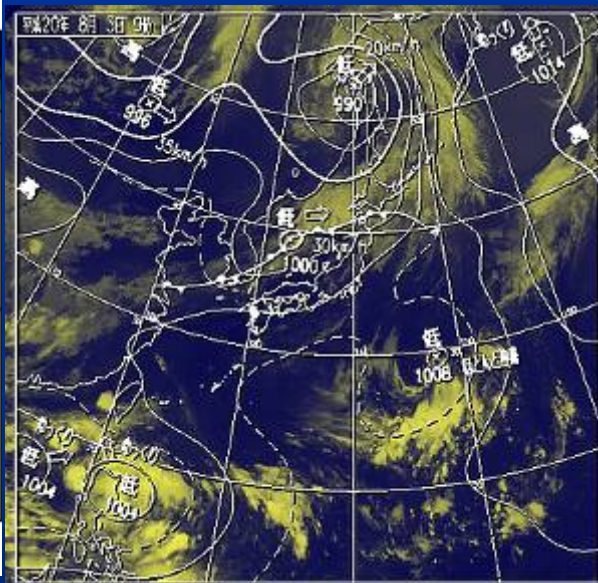
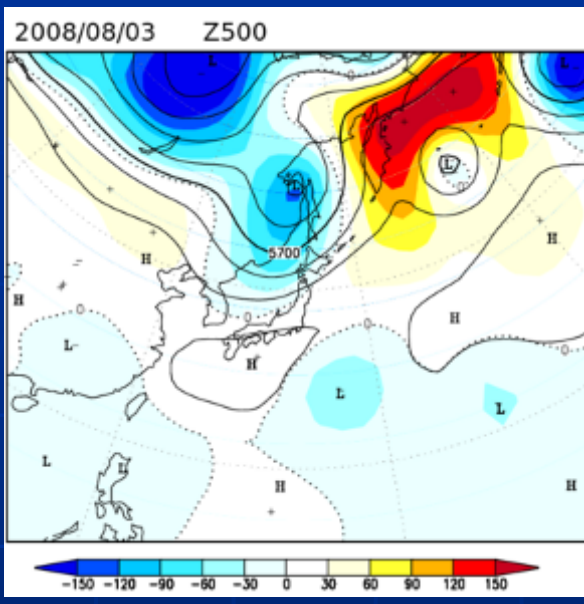
7月末から8月初めに頻発した 局地的な大雨をもたらした循環場の資料

1. 7月末の循環場

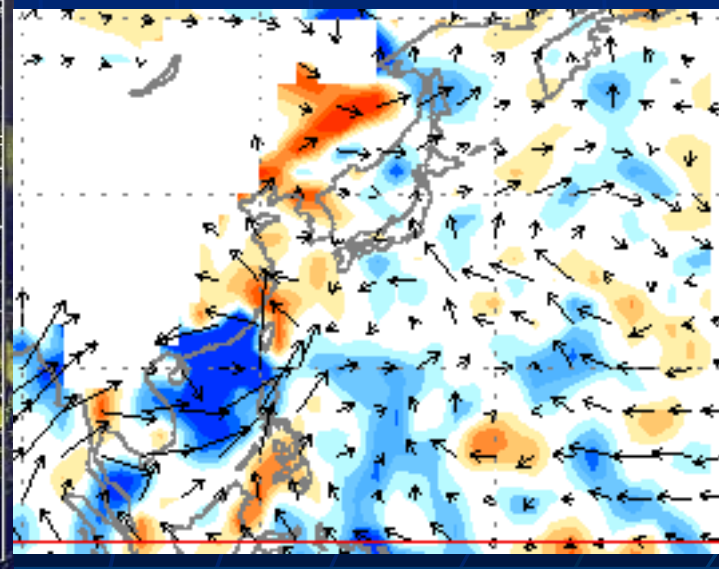
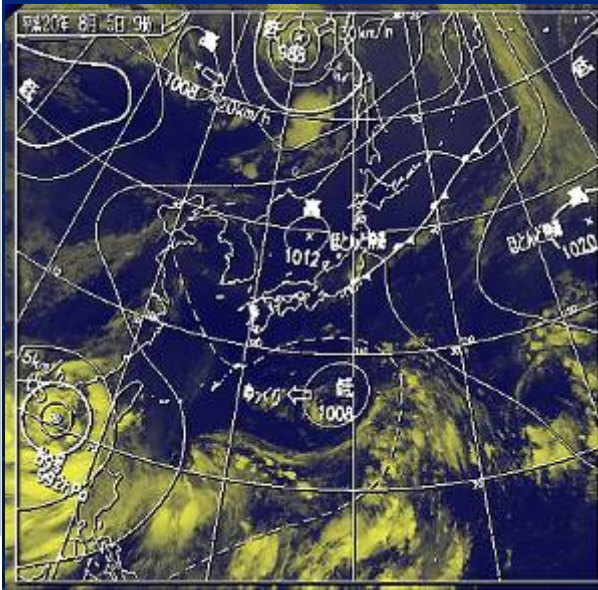
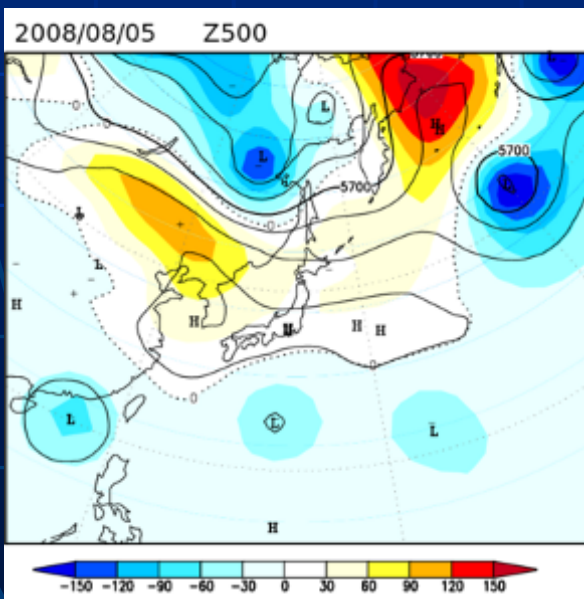
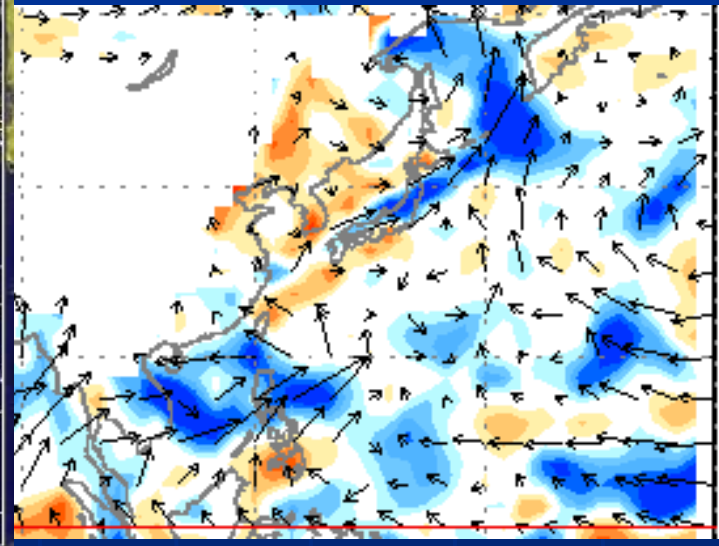
925hPa水蒸気フラックスとその収束



2. 8月初めの循環場



925hPa水蒸気フラックスとその収束

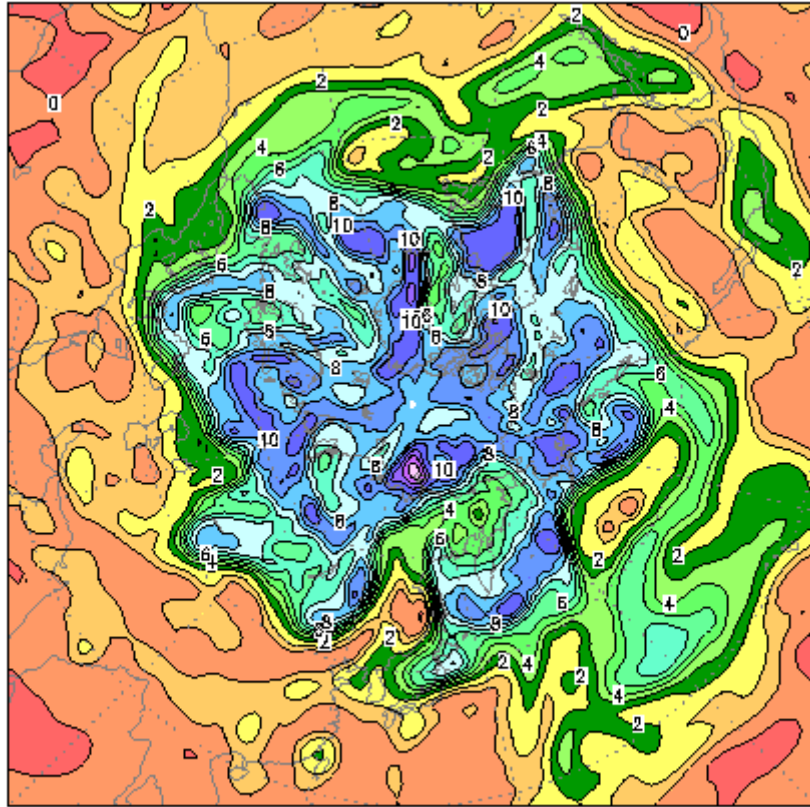


平成20年8月8日

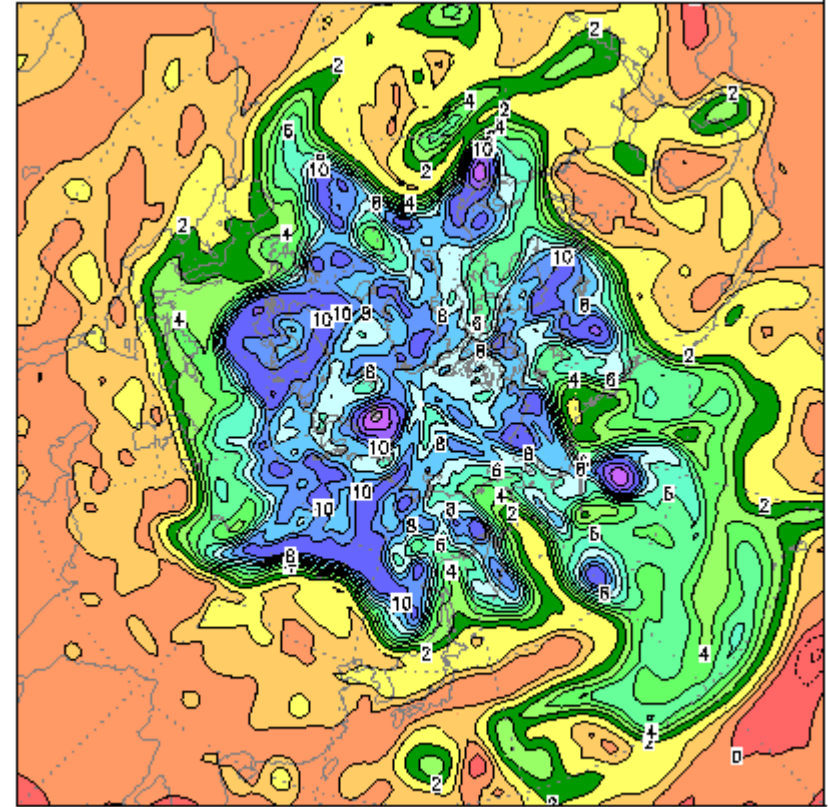
2008年夏の異常気象分析検討会

3. 渦位の分布

7/28 12UTC

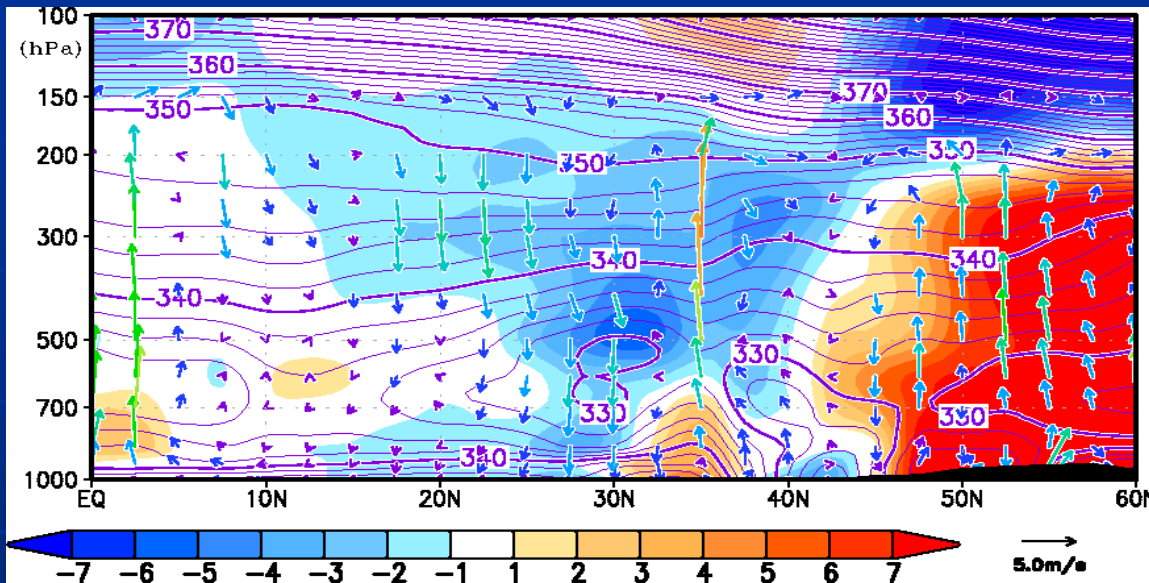


8/5 12UTC

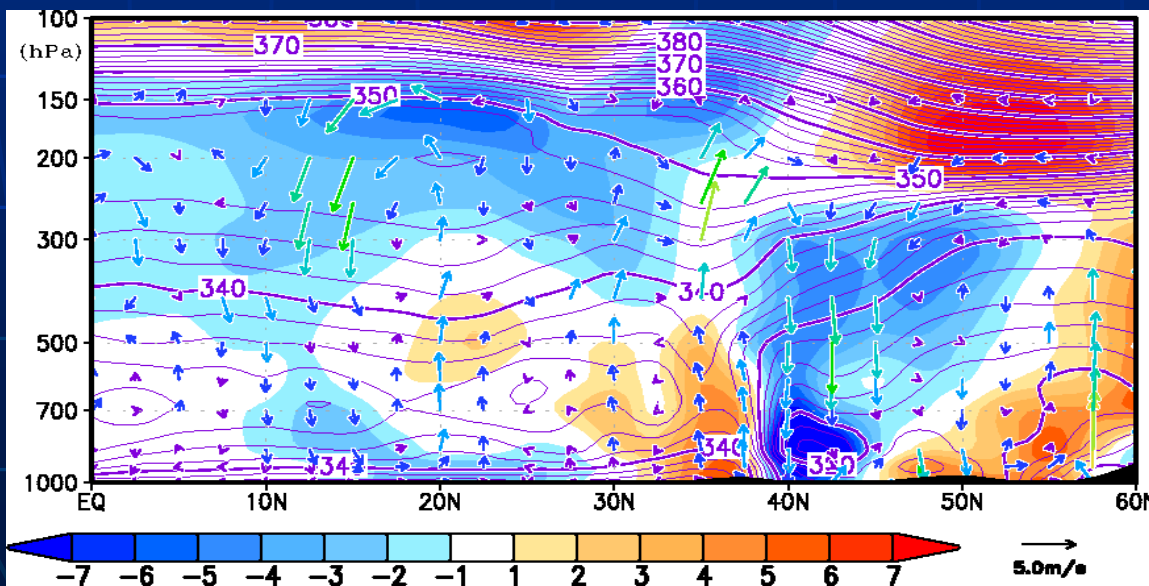


等温位面(350K)上の渦位分布 単位: $10^{-6} \cdot \text{m}^2/\text{s} \cdot \text{K}/\text{Kg}$

4. 鉛直安定度の状況

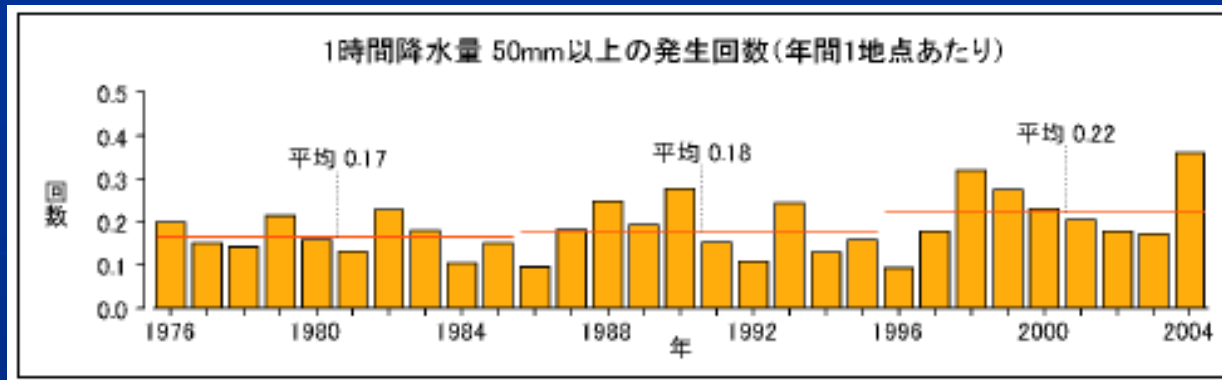


7/27~29平均の135E
に沿った子午面循環偏差
と相当温位偏差



8/4~6平均の140Eに
沿った子午面循環偏差
と相当温位偏差

5. 最近の傾向と今年の状況



(異常気象レポート2005より)

